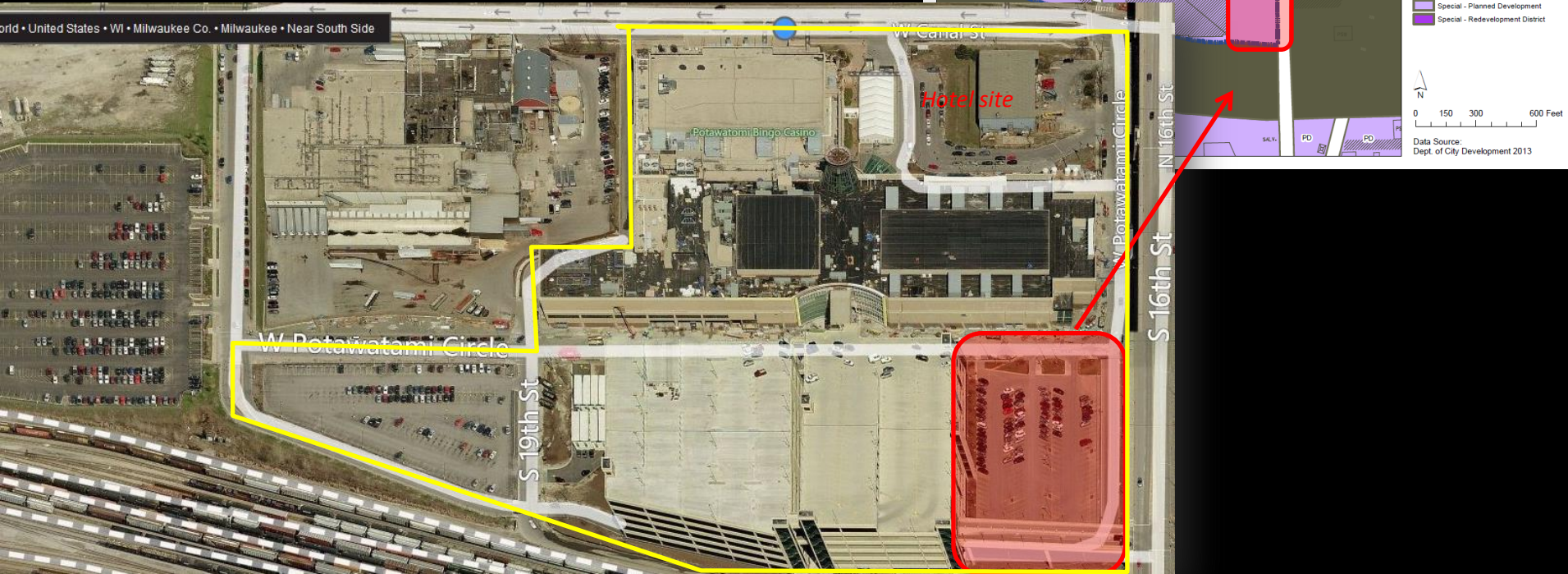
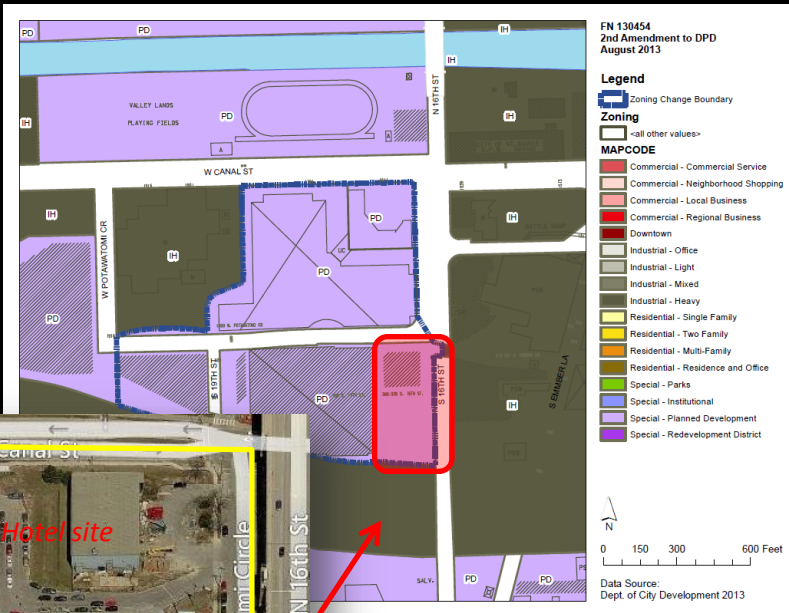
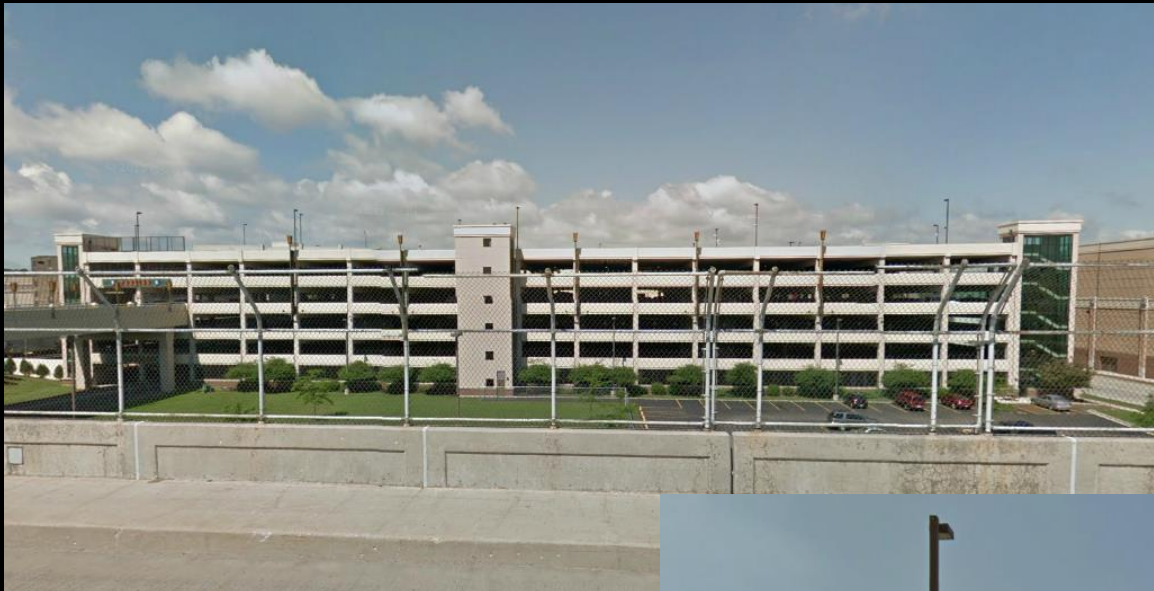


File No. 130454. An ordinance relating to the Second Amendment to the Detailed Planned Development known as Forest County Potawatomi Legacy District, Phase 1, for parking, on land located on the south side of West Canal Street, west of South 16th Street, in the **8th Aldermanic District**. This zoning change was requested by the Forest County Potawatomi Community, and will provide for the increase in size of a new parking structure that is proposed for the site.



Context Photos



View of site from N 16th St.



View of site from W Potawatomi Circle

Context Photos



North view from site



West view from site



Southeast view from site

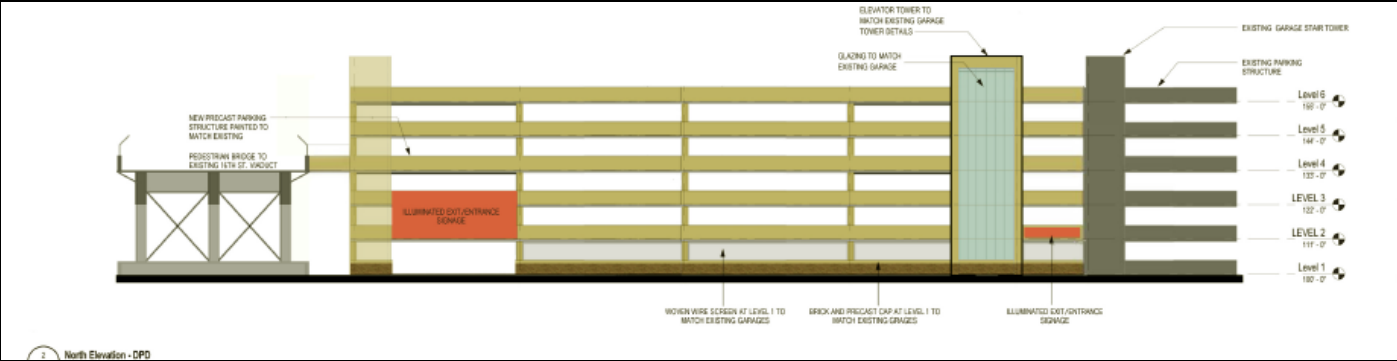


South view from site

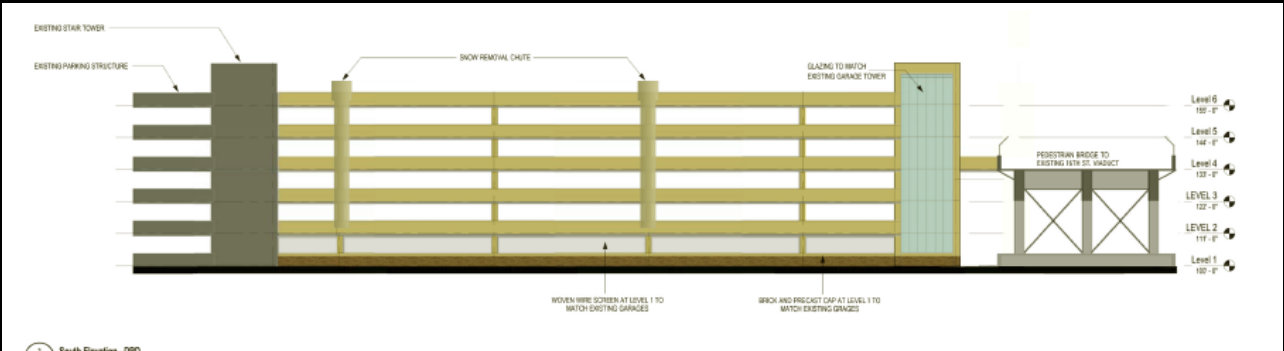
Elevations



East elevation



North elevation



South elevation

Previous Elevations

