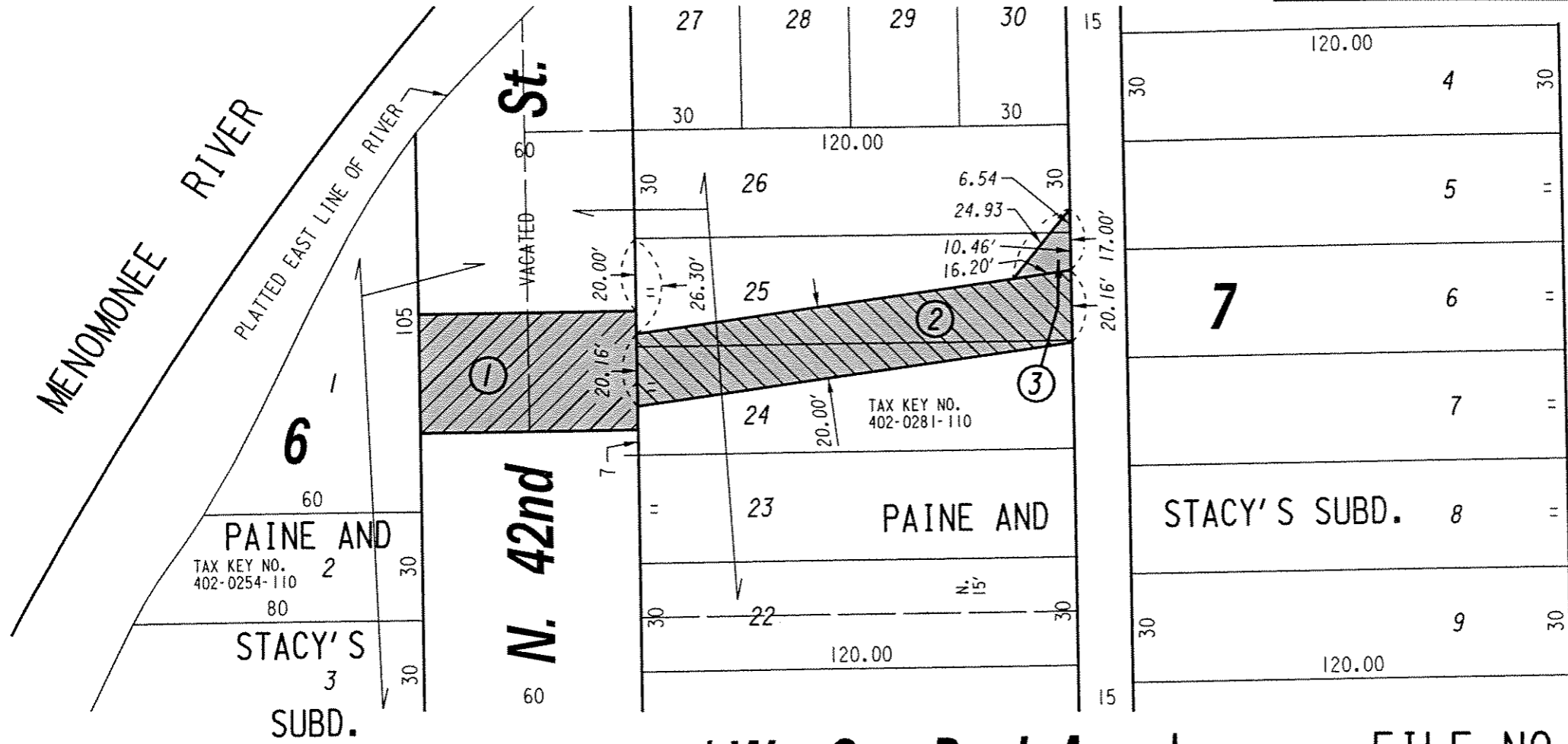


(W. Clybourn St.)

S.W. 1/4 SEC. 25, T.7N., R.2E.

402



(W. St. Paul Ave.)

FILE NO.

INFRASTRUCTURE SERVICES DIVISION

MILWAUKEE, WISCONSIN

ASSIGNED TO: W.E. FUCHS

CH'K'D. BY: W.E. FUCHS

DRAWN BY: W.E.F.

DATE: JULY 20, 2004

PROJECT/GRANT NO.: WK52360046

SCALE: 1" = 40'

APPROVED BY:

maria lindholm

[Signature]

CENTRAL DRAFTING & RECORDS MANAGER

CITY ENGINEER