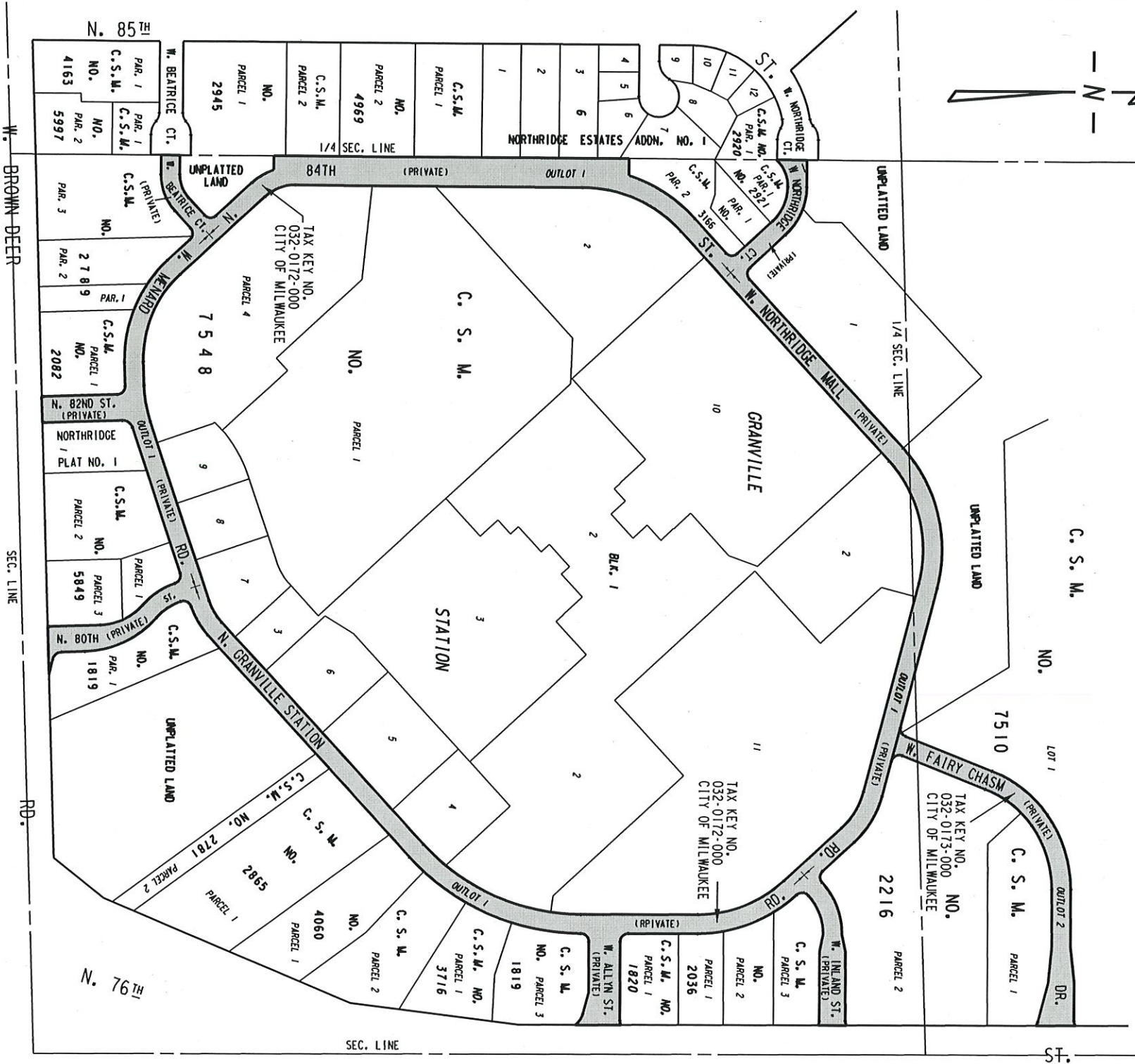


N.E. 1/4 SEC. 4, T. 8N., R. 2E.

6



S.E. 1/4 SEC. 4, T. 8N., R. 2E. 32

CITY-OWNED LAND PROPOSED TO BE DEDICATED FOR PUBLIC STREET PURPOSES

FILE NO. 190513

INFRASTRUCTURE SERVICES DIVISION

MILWAUKEE, WISCONSIN

ASSIGNED TO: W. FUCHS CH'K'D. BY: W. FUCHS
 DRAWN BY: W.F. DATE: JULY 16, 2019
 PROJECT/GRANT NO.: WK52360090 SCALE: 1" = 400'
 APPROVED BY:

W. Fuchs

[Signature]
CITY ENGINEER

CENTRAL DRAFTING & RECORDS MANAGER