



LIVING WITH HISTORY

# Certificate of Appropriateness

Milwaukee Historic Preservation Commission/200 E. Wells Street/Milwaukee, WI 53202/phone 414-286-5712/fax 414-286-3004

<b>Property</b>	1300 E. BRADY ST.	Brady Street Historic District
<b>Description of work</b>	Applicant to open business at 1300 East Brady Street called La Masa. Signage will be installed at the Brady Street and Arlington Place sign band zone and will measure 12 feet long by 1 foot 8 inches high. The sign will be made of aluminum having a rust colored patina to which will be mounted laser cut individual acrylic letters. A square blade sign, 2 feet 3 inches by 2 feet 2 inches will be mounted at the building's corner.	
<b>Date issued</b>	6/23/2015	PTS ID 103833 COA

In accordance with the provisions of Section 320-21 (11) and (12) of the Milwaukee Code of Ordinances, the Milwaukee Historic Preservation Commission has issued a certificate of appropriateness for the work listed above. The work was found to be consistent with preservation guidelines. The following conditions apply to this certificate of appropriateness:

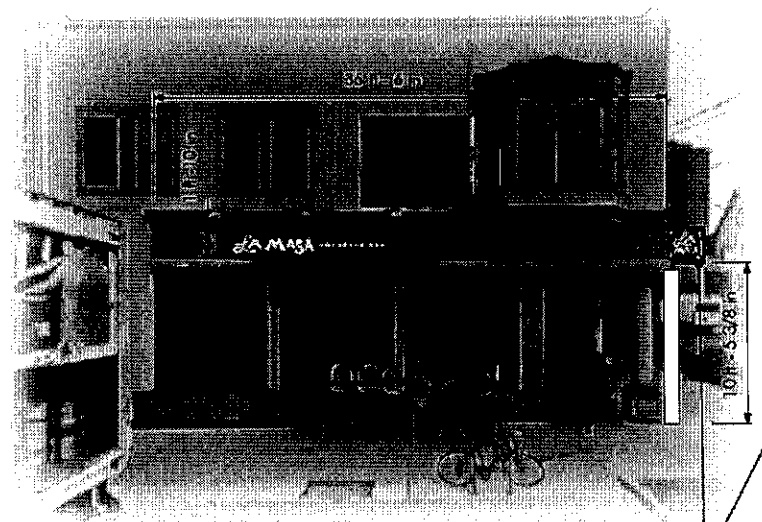
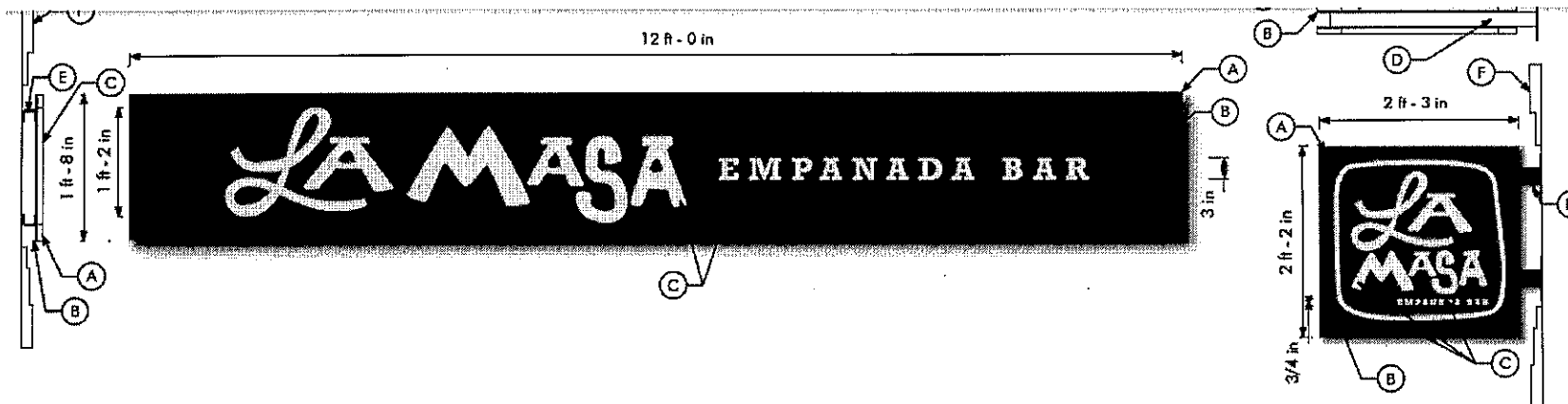
All work to be carried out according to the drawings submitted. The signs will be externally illuminated by existing goose neck fixtures.

All work must be done in a craftsman-like manner, and must be completed within one year of the date this certificate was issued. Staff must approve any changes or additions to this certificate before work begins. Work that is not completed in accordance with this certificate may be subject to correction orders or citations. If you require technical assistance, please contact Carlen Hatala of the Historic Preservation staff as follows: Phone: (414) 286-5722 Fax: (414) 286-3004 E-mail: [chatal@milwaukee.gov](mailto:chatal@milwaukee.gov).

If permits are required, you are responsible for obtaining them from the Milwaukee Development Center. If you have questions about permit requirements, please consult the Development Center's web site, [www.milwaukee.gov/build](http://www.milwaukee.gov/build), or call (414) 286-8210.

City of Milwaukee Historic Preservation Staff

Copies to: Development Center, Ald. Nik Kovac, Contractor, Inspector Jason Golec (286-2553)



Arlington St Frontage



Brady St Frontage

Blade sign location



**CUSTOMER APPROVAL:** \_\_\_\_\_ **DATE:** \_\_\_\_\_ **LANDLORD APPROVAL:** \_\_\_\_\_  
 By signing this approval you are hereby authorizing Sign Art Studio LLC to proceed with the work as described. Any deviation from these specifications will become the customer's financial responsibility.