

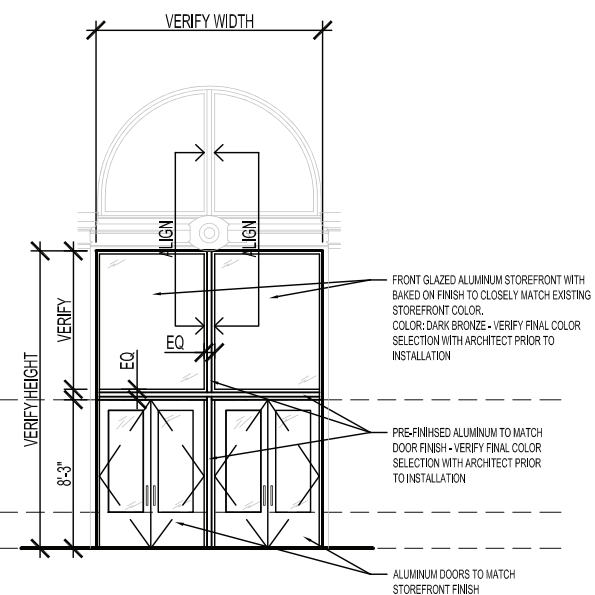
5 PARTIAL NORTH ELEVATION - ORIGINAL DRAWINGS

1/8" = 1'-0"



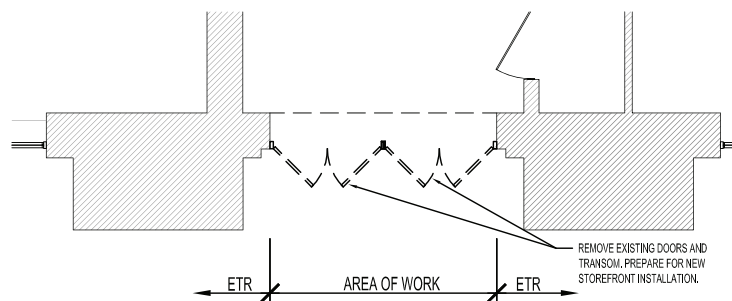
4 PARTIAL NORTH ELEVATION - DEMOLITION

1/8" = 1'-0"



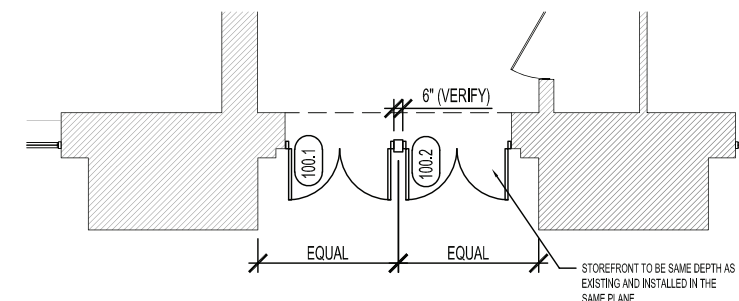
3 PARTIAL NORTH ELEVATION - NEW WORK

1/8" = 1'-0"



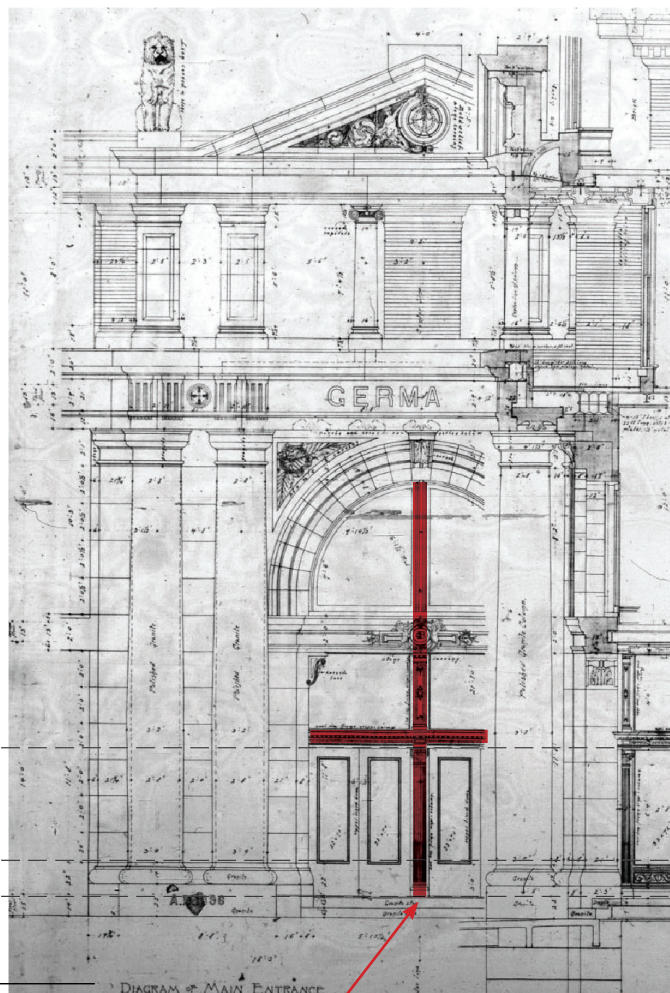
2 PARTIAL FIRST FLOOR DEMOLITION PLAN

1/8" = 1'-0"



1 PARTIAL FIRST FLOOR NEW PLAN

1/8" = 1'-0"



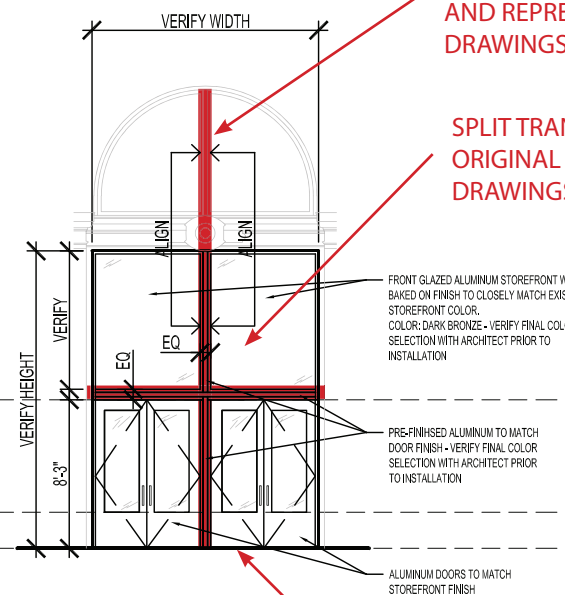
5 PARTIAL NORTH ELEVATION - ORIGINAL DRAWINGS

1/8" = 1'-0"



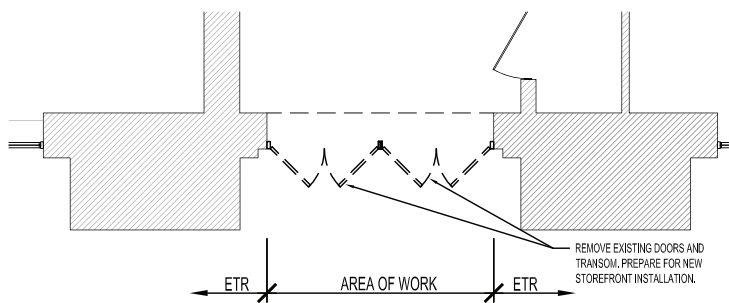
4 PARTIAL NORTH ELEVATION - DEMOLITION

1/8" = 1'-0"



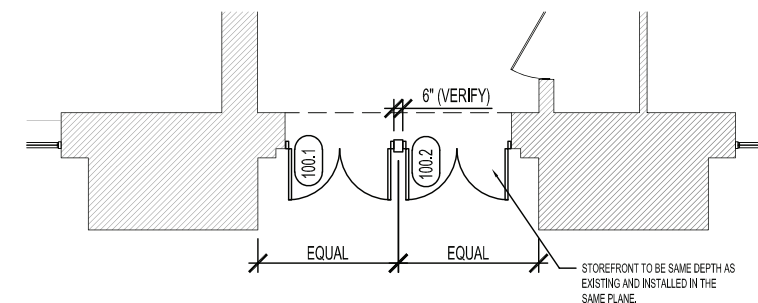
3 PARTIAL NORTH ELEVATION - NEW WORK

1/8" = 1'-0"



2 PARTIAL FIRST FLOOR DEMOLITION PLAN

1/8" = 1'-0"



1 PARTIAL FIRST FLOOR NEW PLAN

1/8" = 1'-0"

INSTALLATION OF PILASTER/COLUMN BETWEEN DOORS IS NOT POSSIBLE DUE TO THE DEPTH OF THE PILASTER/COLUMN AND THE INABILITY TO MODIFY THE PLACEMENT OF THE STOREFRONT

BUILT-UP STOREFRONT TO ALIGN WITH EXISTING/HISTORIC ARCHED WINDOW SEPARATION AND REPRESENT THE ORIGINAL DRAWINGS

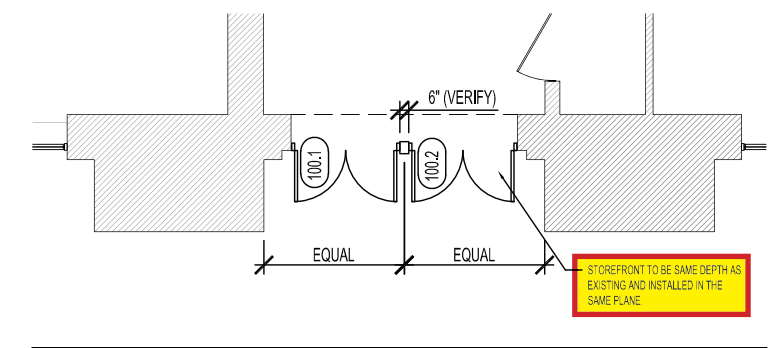
SPLIT TRANSOM PER THE ORIGINAL CONSTRUCTION DRAWINGS

FRONT GLAZED ALUMINUM STOREFRONT WITH BAKED ON FINISH TO CLOSELY MATCH EXISTING STOREFRONT COLOR. COLOR: DARK BRONZE - VERIFY FINAL COLOR SELECTION WITH ARCHITECT PRIOR TO INSTALLATION

PRE-FINISHED ALUMINUM TO MATCH DOOR FINISH - VERIFY FINAL COLOR SELECTION WITH ARCHITECT PRIOR TO INSTALLATION

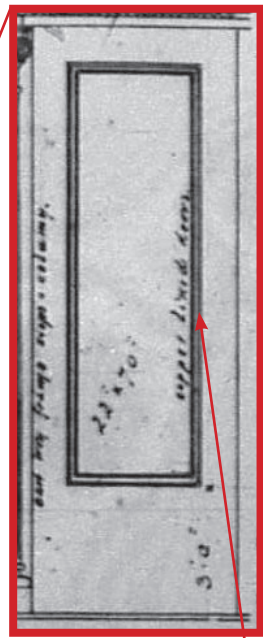
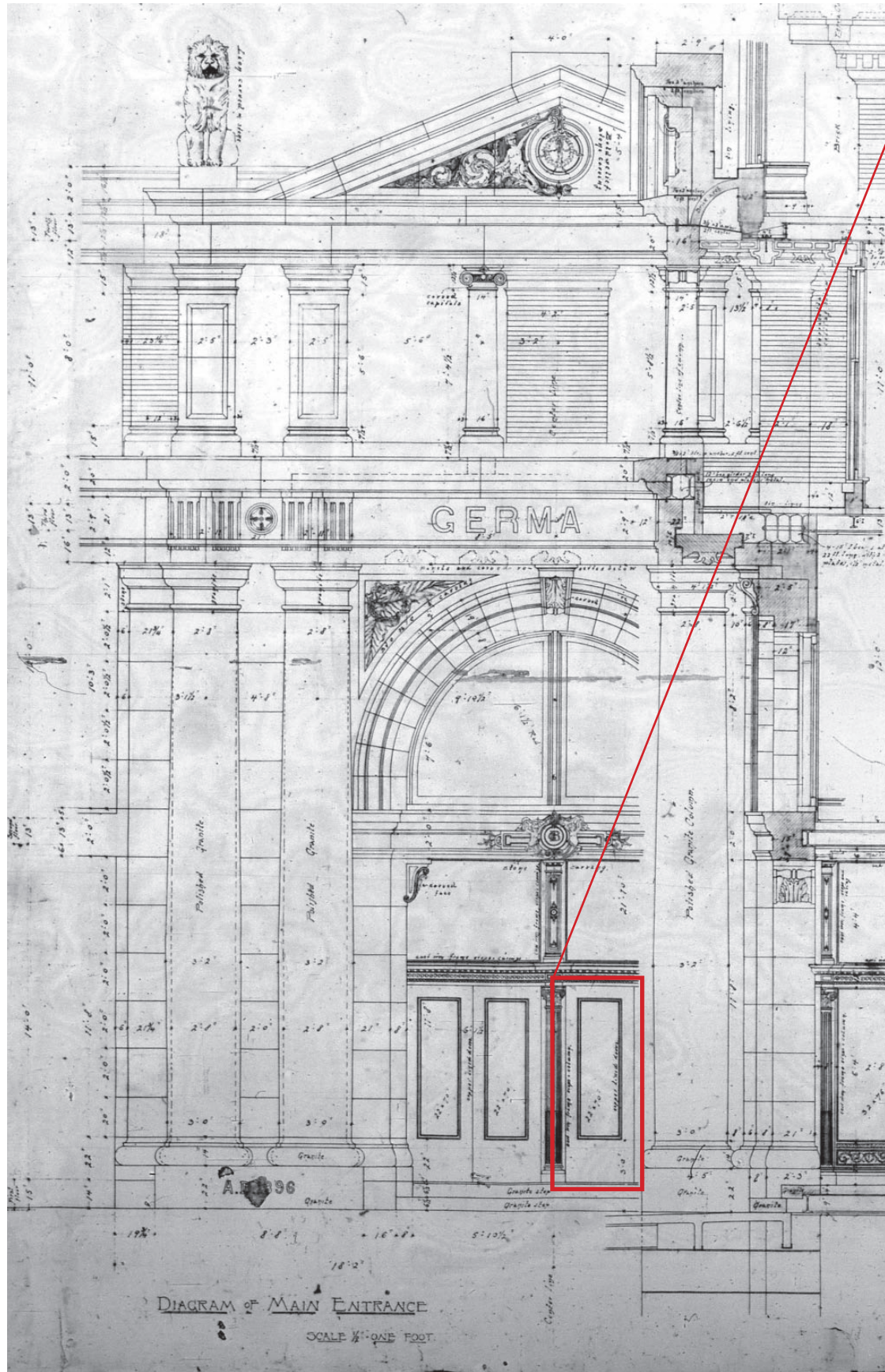
ALUMINUM DOORS TO MATCH STOREFRONT FINISH

DOOR HEIGHT PROPORTIONAL TO EXISTING AND ORIGINAL DRAWINGS



1 PARTIAL FIRST FLOOR NEW PLAN

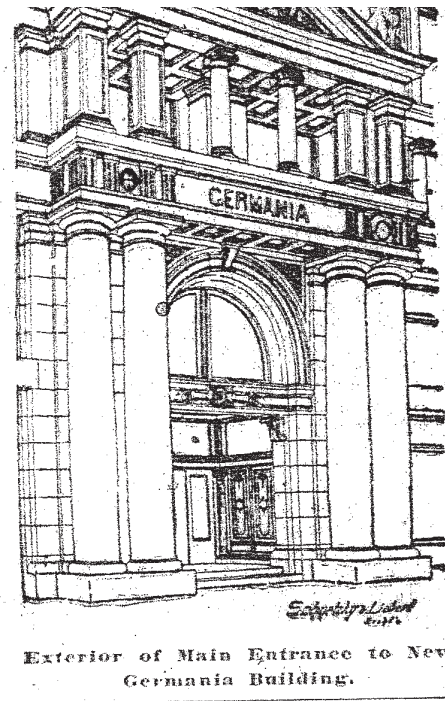
1/8" = 1'-0"



ORIGINAL PLANS NOTED AS:
COPPER LINED DOORS



HISTORIC IMAGE: SINGLE LIGHT DOORS



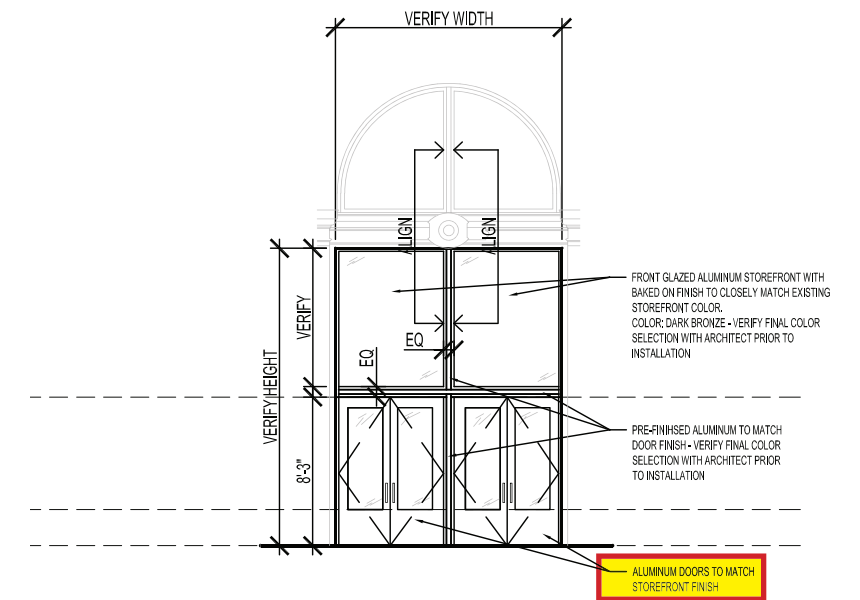
Exterior of Main Entrance to New Germania Building.

Milwaukee Sentinel, Sunday April 4, 1897

Chatal/wor/Germania Building

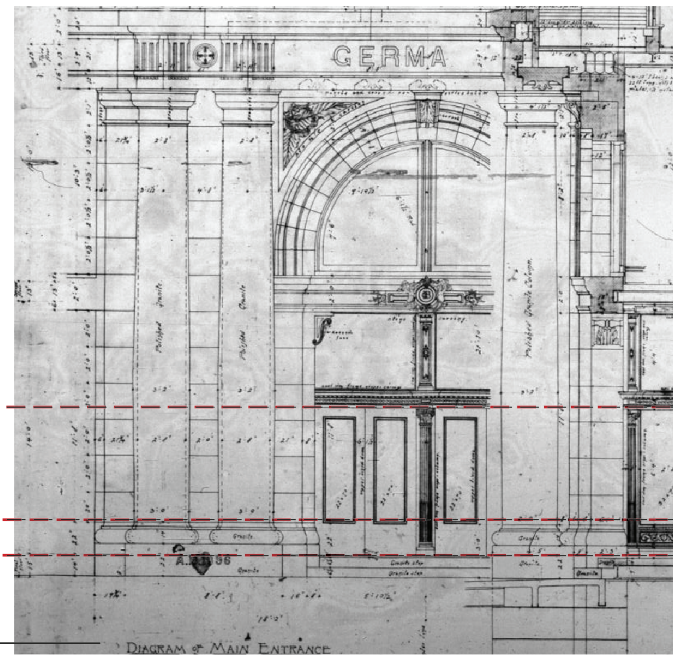


COLOR TO MATCH EXISTING CONDITIONS ON THE BUILDING



3 PARTIAL NORTH ELEVATION - NEW WORK

1/8" = 1'-0"



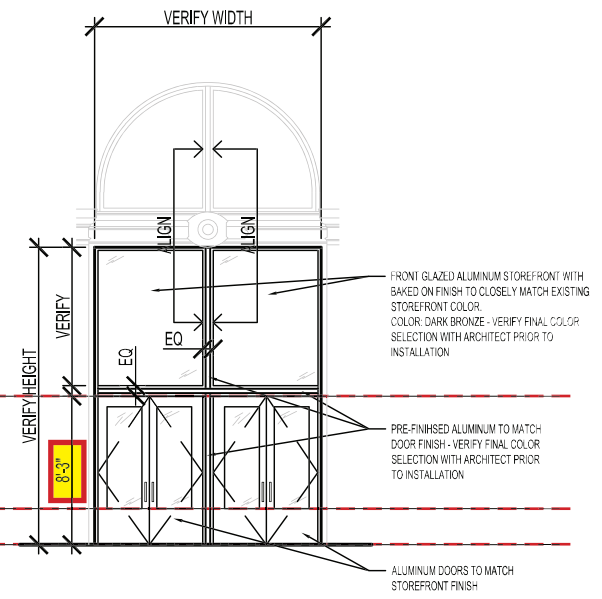
5 PARTIAL NORTH ELEVATION - ORIGINAL DRAWINGS

1/8" = 1'-0"



4 PARTIAL NORTH ELEVATION - DEMOLITION

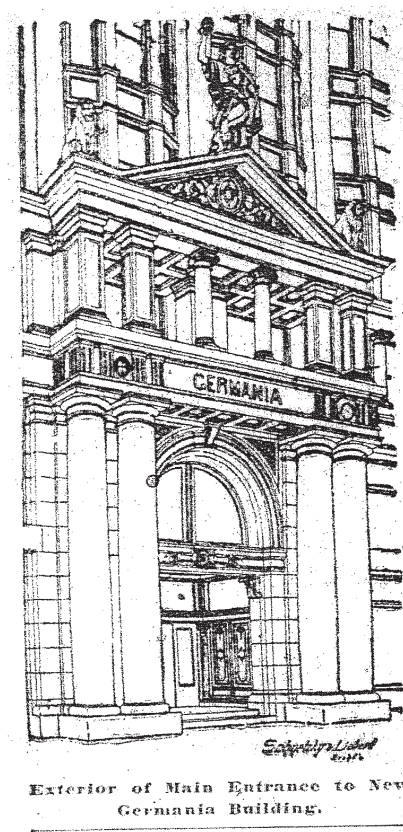
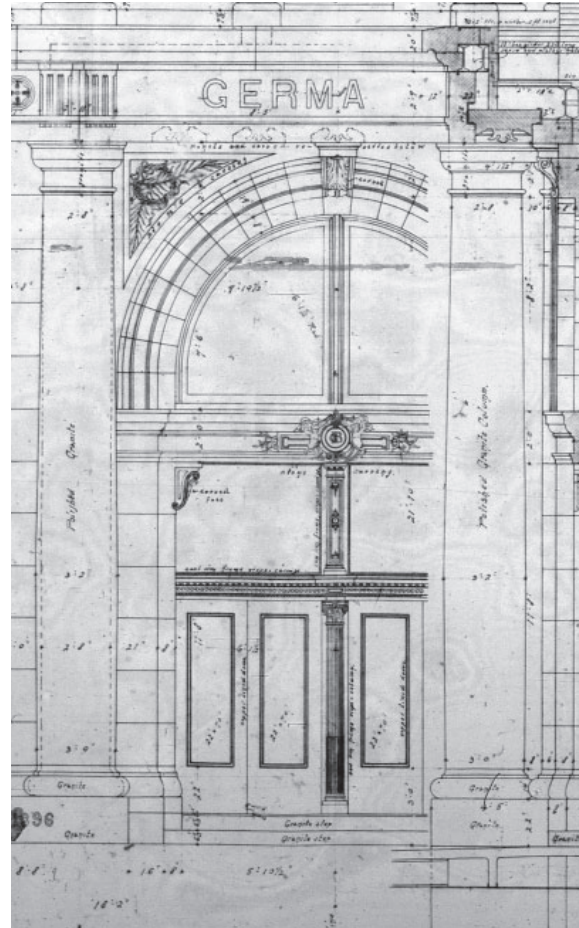
1/8" = 1'-0"



3 PARTIAL NORTH ELEVATION - NEW WORK

1/8" = 1'-0"

HISTORIC IMAGES: ENTRY STAIRS



Exterior of Main Entrance to New Germania Building.

Milwaukee Sentinel, Sunday April 4, 1897

Chatal/word/Germania Building

PRESENT DAY: NO ENTRY STAIRS

