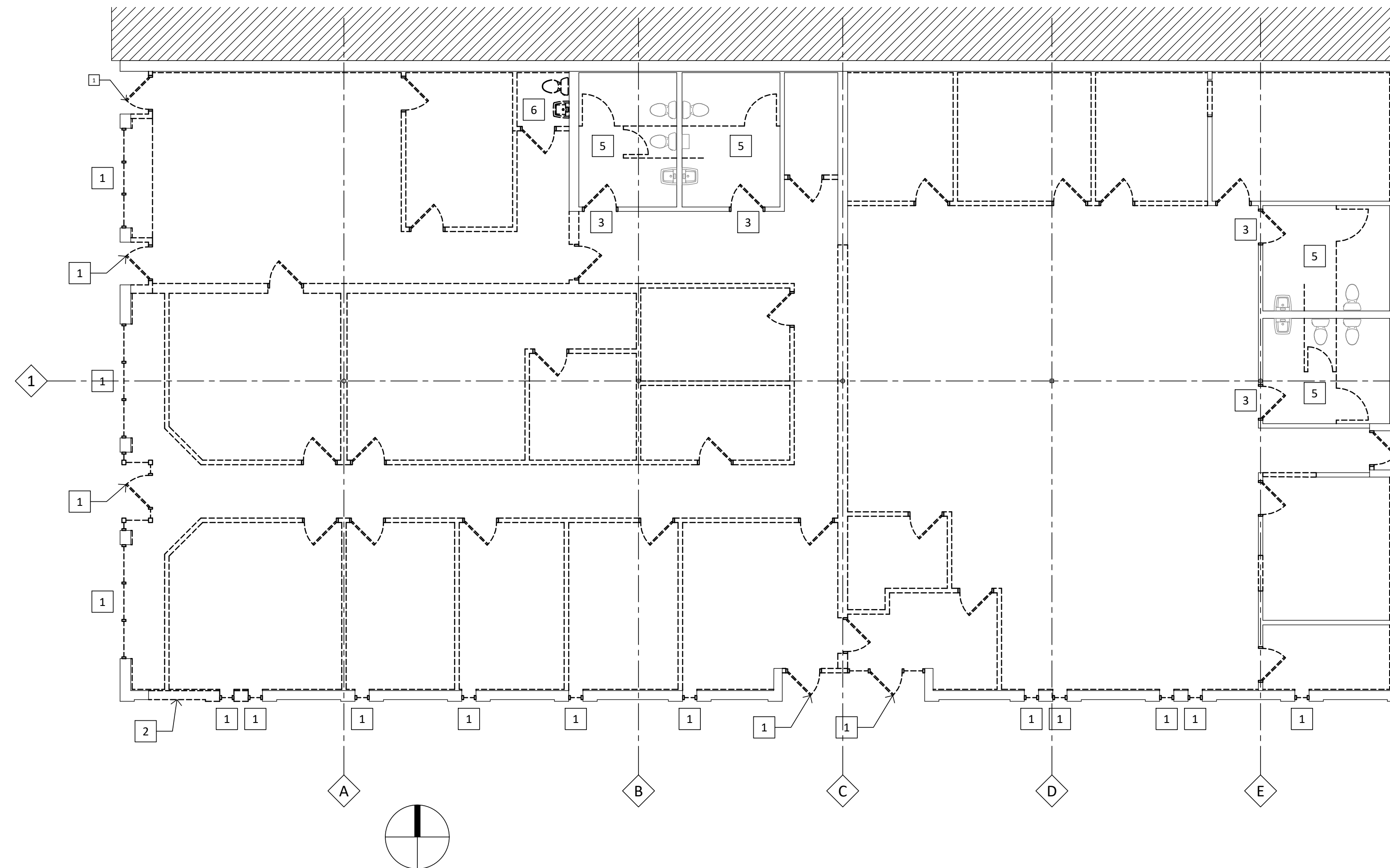


DEMOLITION PLAN GENERAL NOTES

- A. REMOVE ALL EXISTING FLOORING MATERIALS.
- B. REMOVE ALL EXISTING CEILINGS.
- C. REMOVE ALL EXISTING.
- D. REMOVE ALL EXISTING DOORS AND FRAMES SHOWN DASHED WITH EXCEPTION OF EXISTING FRAMES INDICATED TO REMAIN.
- E. REMOVE ALL EXISTING WALLS AND FURRING SHOWN DASHED.

DEMOLITION PLAN GENERAL NOTES

1	REMOVE EXISTING STOREFRONT WINDOW OR STOREFRONT ENTRY DOOR.
2	REMOVE EXTERIOR WALL.
3	REMOVE EXISTING DOOR - EXISTING FRAME TO REMAIN.
4	REMOVE EXISTING PARTITION / FURRING.
5	REMOVE EXISTING TOILET PARTITION.
6	REMOVE EXISTING PLUMBING FIXTURES.



02 DEMOLITION PLAN SCALE - 1/8" = 1'-0"

FLOOR PLAN GENERAL NOTES

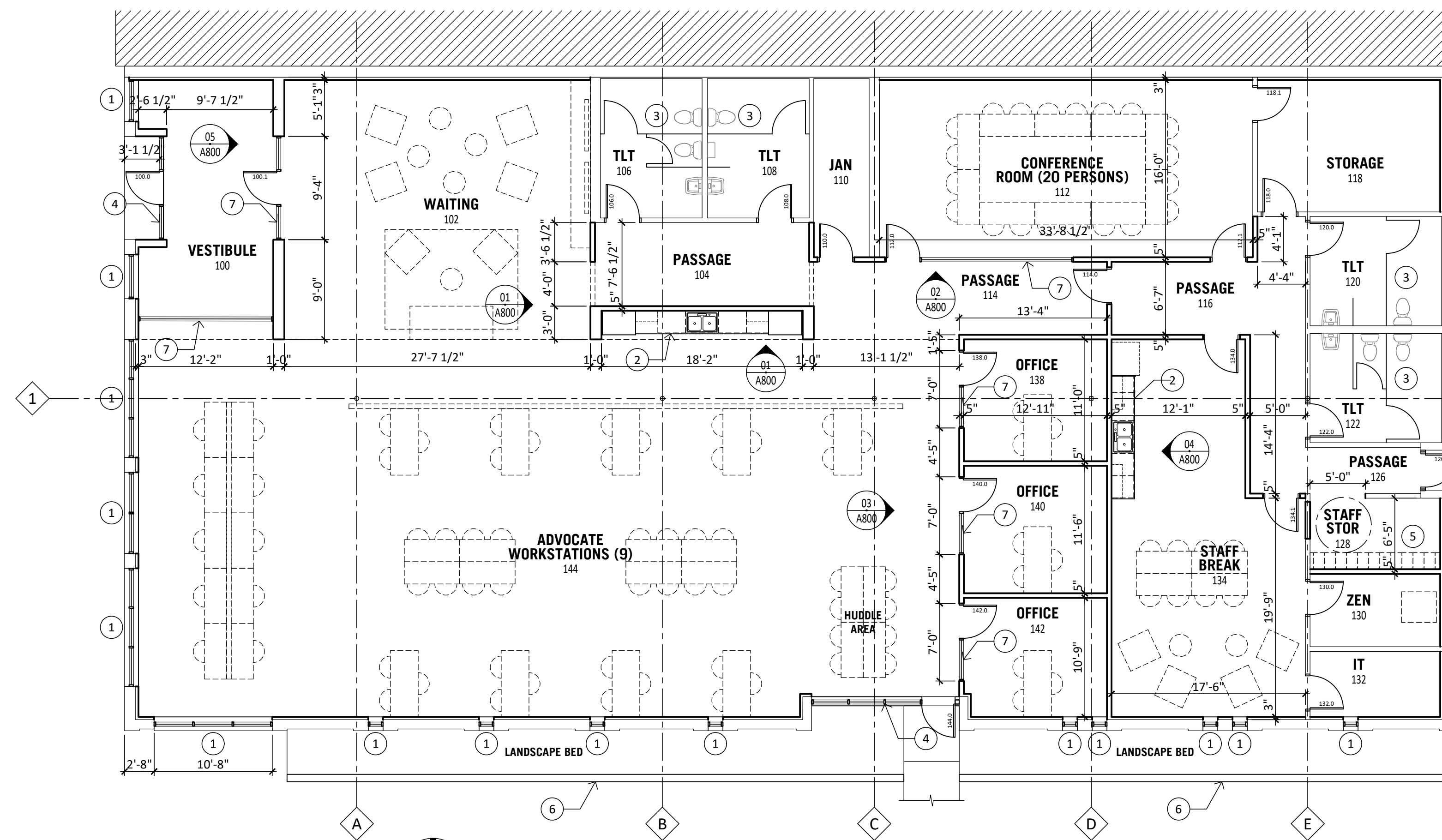
- A. FLOOR PLAN DIMENSIONS ARE NOMINAL TAKEN FROM FACE OF WALLS.
- B. FINISHED FLOOR ELEVATION 100'-0" (ARCHITECTURAL).
- C. FURNITURE (SHOWN DASHED) BY OWNER - COORDINATE POWER REQUIREMENTS WITH OWNER.

FLOOR PLAN KEYED NOTES

1	NEW STOREFRONT WINDOW AND PRECAST SILL
2	PLASTIC LAMINATE CASEWORK.
3	METAL TOILET PARTITIONS AND ACCESSORIES.
4	NEW STOREFRONT ENTRANCE SYSTEM.
5	STAFF LOCKERS - VERIFY COUNT WITH OWNER.
6	NEW 18" ABOVE GRADE CONCRETE LANDSCAPE WALL WITH BOARD FORMED TEXTURE.
7	INTERIOR ALUMINUM STOREFRONT FRAMING.

INTERIOR PARTITION DESCRIPTIONS

P1	INTERIOR FURRING - STEEL STUDS: 2" RIGID INSULATION WITH 3-5/8" STEEL STUDS AT 16" OC, (1) LAYER 5/8" GYPSUM BOARD. EXTEND FURRING FULL HEIGHT TO DECK ABOVE. EXTEND GYPSUM BOARD FULL HEIGHT TO DECK ABOVE EXCEPT AT CLG-2 EXTEND MIN 4" ABOVE CEILING.
P2	INTERIOR PARTITION - STEEL STUDS: 3-5/8" STEEL STUDS AT 16" OC, (1) LAYER 5/8" GYPSUM BOARD AT EACH EXPOSED SIDE. PROVIDE SOUND ATTENUATING BLANKET INSULATION. EXTEND PARTITIONS FULL HEIGHT TO DECK ABOVE. EXTEND GYPSUM BOARD FULL HEIGHT TO DECK ABOVE EXCEPT AT CLG-2 EXTEND MIN 4" ABOVE CEILING.
	INTERIOR PARTITION NOTES: 1. ALL INTERIOR WALLS TO BE (P2) UNLESS OTHERWISE NOTED. 2. ALL INTERIOR FURRING TO BE (P1) UNLESS OTHERWISE NOTED. 3. PROVIDE BLOCKING/BACKING FOR INSTALLATION OF ACCESSIBILITY ACCESSORIES AND WALL MOUNTED ITEMS INDICATED ON THE DRAWINGS INCLUDING AGENCY PROVIDED ITEMS. 4. PROVIDE ACOUSTICAL SEALANT AROUND ALL PENETRATIONS.



01 FLOOR PLAN SCALE - 1/8" = 1'-0"

BUILDING CODE SUMMARY

BUILDING CODES	WISCONSIN BUILDING CODE WISCONSIN ACCESSIBILITY CODE	IBC 2015 - AMENDED ANSI A117.1; 2009
CONSTRUCTION TYPES	TYPE VB	
BUILDING AREA:	7,200 SF ALLOWABLE AREA AT = 9,000 SF PER FLOOR.	
BUILDING HEIGHT:	ALLOWABLE HEIGHT: 40-FEET.	
OCCUPANCY CLASSIFICATION	BUSINESS GROUP B; NON-SEPARATED USES.	
DESIGN OCCUPANT LOAD	BUSINESS GROUP: 7,200 SF/ 100 = 72 OCCUPANTS	
COMMON PATH OF EGRESS	200-FEET ALLOWED	
ACCESSIBILITY	BUILDING IS FULLY ACCESSIBLE.	
FIRE PROTECTION SYSTEMS	NON-SPRINKLED. FIRE ALARM NOT REQUIRED. FIRE EXTINGUISHERS; TWO PROVIDED; NFPA 10 CLASS A; LIGHT HAZARD; 75- FEET MAX TRAVEL DISTANCE.	
EXIT TRAVEL DISTANCE (NS)	200- FEET.	
MIN PLUMBING FIXTURES	WC: THREE REQUIRED; TSIX PROVIDED. LAV: TWO REQUIRED; FOUR PROVIDED DF: POTABLE WATER PROVIDED AT REFRESHMENT STATION AND STAFF BREAK ROOM.	

Project Name
Hunger Task Force
Mitchell Street Offices

Set Type
Construction Documents

Date
09-19-2024

Project Number
24004

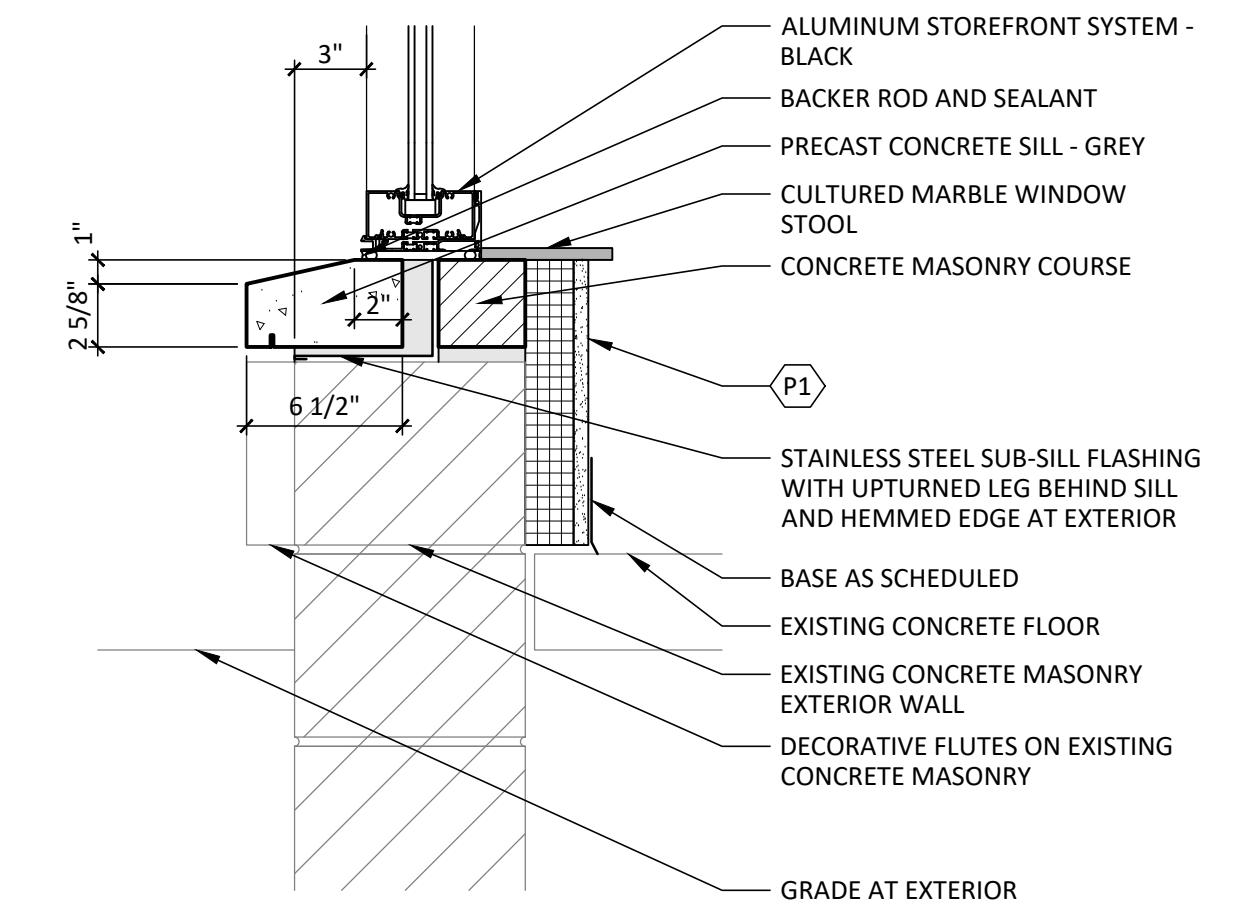
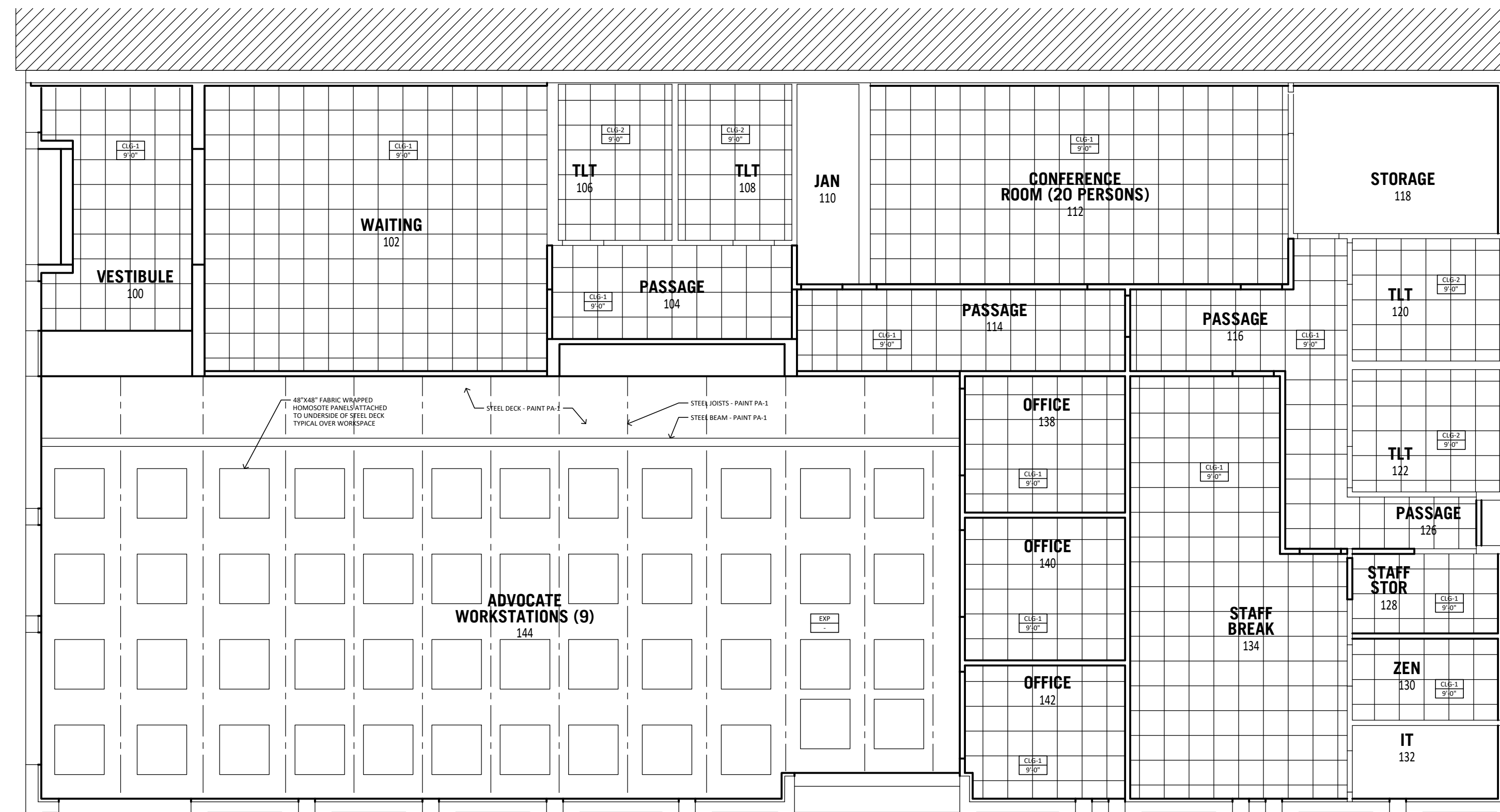
Sheet Name
Demolition Plan and
Floor Plan

Sheet Number

A200

REFLECTED CEILING PLAN GENERAL NOTES

- A. CENTER CEILING TILES IN ROOM.
- B. MINIMUM CEILING TILE DIMENSION AT WALLS AND PERIMETER = 4".



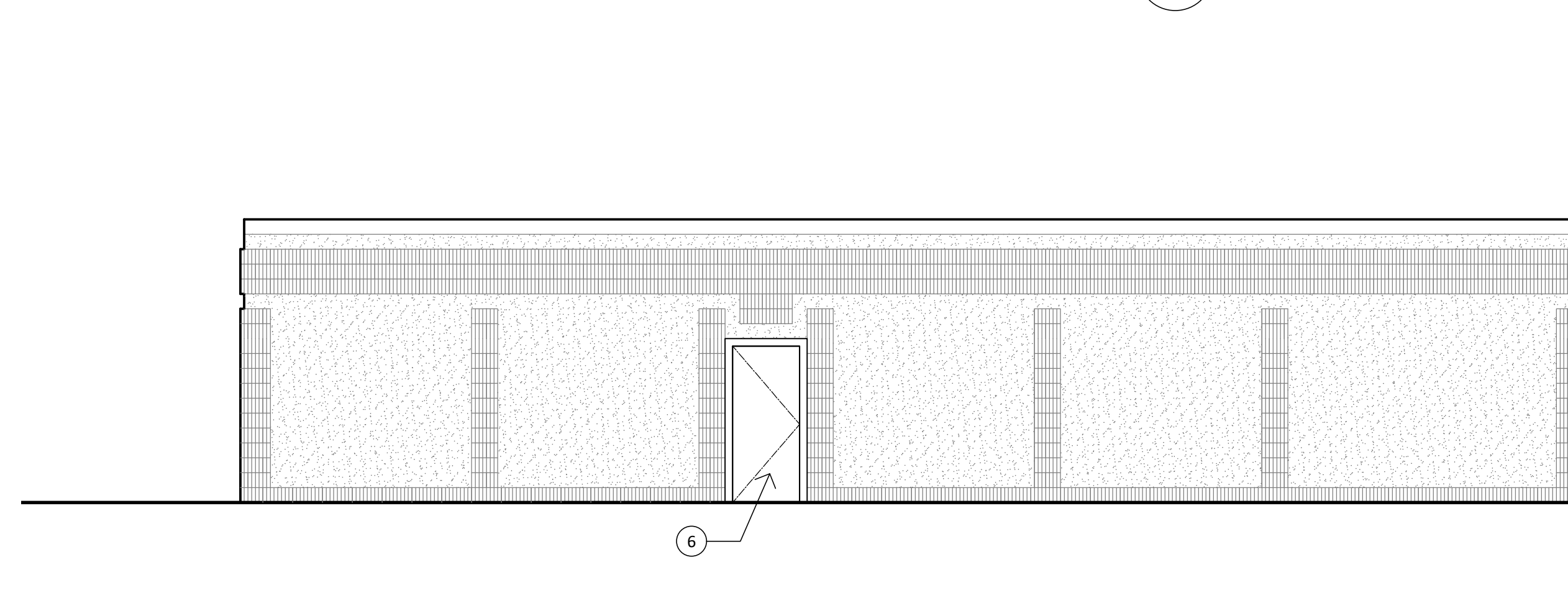
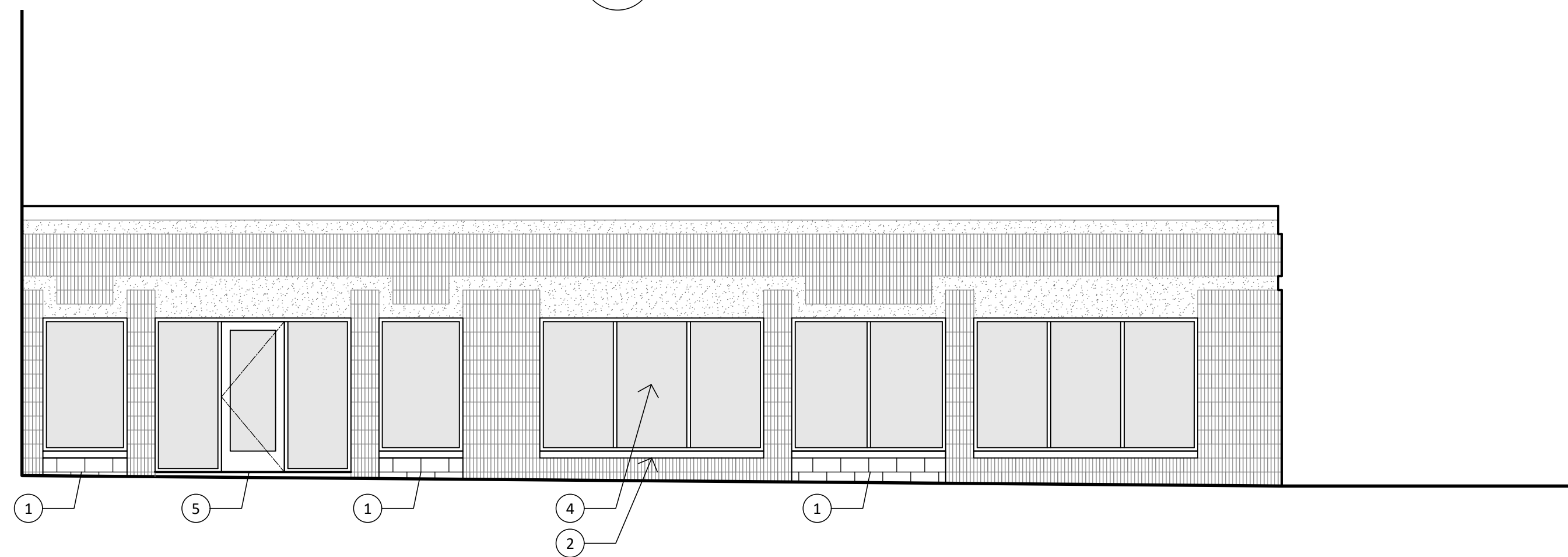
01 DEMOLITION PLAN

SCALE - 1/4" = 1'-0"

02 WINDOW SILL AT EXISTING EXTERIOR WALL

AT VESTIBULE GLAZING

SCALE - 1 1/2" = 1'-0"

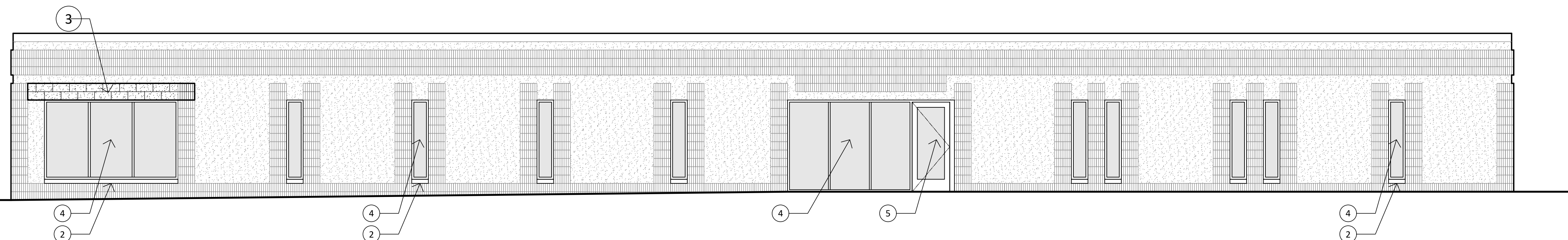


03 SOUTH EXTERIOR ELEVATION

SCALE - 3/16" = 1'-0"

04 NORTH EXTERIOR ELEVATION

SCALE - 3/16" = 1'-0"



05 EAST EXTERIOR ELEVATION

SCALE - 3/16" = 1'-0"

FLOOR PLAN KEYED NOTES

- ① NEW MASONRY INFILL - FINISH AND PAINT TO MATCH EXISTING.
- ② NEW PRECAST CONCRETE SILL.
- ③ NEW MASONRY OPENING BY MASONRY CONTRACTOR.
- ④ NEW STOREFRONT WINDOW.
- ⑤ NEW STOREFRONT ENTRANCE.
- ⑥ NEW HOLLOW METAL DOOR AND FRAME.

Project Name
Hunger Task Force
Mitchell Street Offices

Set Type
Construction Documents

Date
09-19-2024

Project Number
24004

Sheet Name
Demolition Plan and
Floor Plan

Sheet Number

ROOM FINISH SCHEDULE

ROOM NUMBER	ROOM NAME	FLOORS		NORTH WALL		SOUTH WALL		EAST WALL		WEST WALL		CEILING		WINDOW TREATMENTS	REMARKS
		TYPE	BASE	TYPE	FINISH	TYPE	FINISH	TYPE	FINISH	TYPE	FINISH	TYPE	FINISH		
100	VESTIBULE	CPT-1	RB-1	GYP	PA	GLAZING	-	GLAZING	-	GLAZING	---	CLG-2	---	---	---
102	WAITING	CPT-2	RB-1	GYP	PA	---	---	GYP	PA	GLAZING	---	CLG-2	---	---	---
104	PASSAGE	CPT-2	RB-1	GYP	PA	GYP	PA	GYP	PA	GYP	PA	CLG-1	---	---	---
106	TLT	EXST	EXST	EXST	EXST	EXST	EXST	EXST	EXST	EXST	EXST	CLG-1	---	---	---
108	TLT	EXST	EXST	EXST	EXST	EXST	EXST	EXST	EXST	EXST	EXST	CLG-1	---	---	---
110	JAN	EXST	EXST	EXST	EXST	EXST	EXST	EXST	EXST	EXST	EXST	EXST	---	---	---
112	CONFERENCE ROOM	CPT-3	RB-1	GYP	PA	GYP	PA	GYP	PA	GYP	PA	CLG-1	---	---	---
114	PASSAGE	CPT-2	RB-1	GYP	PA	GYP	PA	GYP	PA	GYP	PA	CLG-1	---	---	---
116	PASSAGE	CPT-2	RB-1	GYP	PA	GYP	PA	GYP	PA	GYP	PA	CLG-1	---	---	---
118	STORAGE		RB-1	GYP	PA	GYP	PA	GYP	PA	GYP	PA	EXST	---	---	---
120	TLT	EXST	EXST	EXST	EXST	EXST	EXST	EXST	EXST	EXST	EXST	CLG-1	---	---	---
122	TLT	EXST	EXST	EXST	EXST	EXST	EXST	EXST	EXST	EXST	EXST	CLG-1	---	---	---
126	PASSAGE	CPT-2	RB-1	GYP	PA	GYP	PA	GYP	PA	GYP	PA	CLG-1	---	---	---
128	STAFF STORAGE	CPT-2	RB-1	GYP	PA	GYP	PA	GYP	PA	GYP	PA	CLG-1	---	---	---
130	ZEN	CPT-2	RB-1	GYP	PA	GYP	PA	GYP	PA	GYP	PA	CLG-1	---	---	---
132	IT	EXST	EXST	EXST	EXST	EXST	EXST	EXST	EXST	EXST	EXST	EXST	---	---	---
134	STAFF BREAK	LVP-1	RB-1	GYP	PA	GYP	PA	GYP	PA	GYP	PA	CLG-1	---	WT-1	---
138	OFFICE	CPT-3	RB-1	GYP	PA	GYP	PA	GYP	PA	GYP	PA	CLG-1	---	---	---
140	OFFICE	CPT-3	RB-1	GYP	PA	GYP	PA	GYP	PA	GYP	PA	CLG-1	---	---	---
142	OFFICE	CPT-3	RB-1	GYP	PA	GYP	PA	GYP	PA	GYP	PA	CLG-1	---	WT-1	---
144	ADVOCATE WORK	SV-1	RB-1	GYP	PA	GYP	PA	GYP	PA	GYP	PA	EXPOSED	PA	WT-1	---

GENERAL NOTES

A

KEYED REMARKS

1

DOOR SCHEDULE

MARK	ROOM NUMBER	ROOM NAME	DOOR				FRAME				DOOR HARDWARE AND LOCKING	FIRE RATING	REMARKS		
			TYPE	MATL	WIDTH	HEIGHT	FINISH	GLASS	TYPE	MATL				FINISH	GLASS
100.0	100	VESTIBULE	---	ALUM	3'-0"	7'-2"	PREFIN	IG	-	ALUM	PREFIN	IG	---	---	FV DOOR HEIGHT
100.1	100	VESTIBULE	---	ALUM	3'-0"	7'-2"	PREFIN	MG	-	ALUM	PREFIN	MG	---	---	FV DOOR HEIGHT
106.0	106	TLT	FLUSH	WD	3'-0"	7'-0"	PREFIN	---	EXST	HM	PA	---	---	---	---
108.0	108	TLT	FLUSH	WD	3'-0"	7'-0"	PREFIN	---	EXST	HM	PA	---	---	---	---
110.0	110	JANITOR	FLUSH	WD	3'-0"	7'-0"	PREFIN	---	---	HM	PA	---	---	---	---
112.0	112	CONFERENCE ROOM	FLUSH	WD	3'-0"	7'-0"	PREFIN	---	---	ALUM	PREFIN	---	---	---	---
112.1	112	CONFERENCE ROOM	FLUSH	WD	3'-0"	7'-0"	PREFIN	---	---	HM	PA	---	---	---	---
114.0	114	PASSAGE	FLUSH	WD	3'-0"	7'-0"	PREFIN	---	---	HM	PA	---	---	---	---
118.0	118	STORAGE	FLUSH	WD	3'-0"	7'-0"	PREFIN	---	EXST	HM	PA	---	---	---	---
120.0	120	TLT	FLUSH	WD	3'-0"	7'-0"	PREFIN	---	EXST	HM	PA	---	---	---	---
122.0	122	TLT	FLUSH	WD	3'-0"	7'-0"	PREFIN	---	EXST	HM	PA	---	---	---	---
126.0	126	PASSAGE	FLUSH	HM	3'-0"	7'-0"	PREFIN	---	---	HM	PA	---	---	---	---
130.0	130	ZEN	FLUSH	HM	3'-0"	7'-0"	PREFIN	---	---	HM	PA	---	---	---	---
132.0	132	IT	FLUSH	HM	3'-0"	7'-0"	PREFIN	---	---	HM	PA	---	---	---	---
134.0	134	STAFF BREAK	FLUSH	HM	3'-0"	7'-0"	PREFIN	---	---	HM	PA	---	---	---	---
134.1	134	STAFF BREAK	FLUSH	HM	3'-0"	7'-0"	PREFIN	---	---	HM	PA	---	---	---	---
138.0	138	OFFICE	FLUSH	WD	3'-0"	7'-0"	PREFIN	---	---	ALUM	PREFIN	---	---	---	---
140.0	140	OFFICE	FLUSH	WD	3'-0"	7'-0"	PREFIN	---	---	ALUM	PREFIN	---	---	---	---
142.0	142	OFFICE	FLUSH	WD	3'-0"	7'-0"	PREFIN	---	---	ALUM	PREFIN	---	---	---	---
144.0	144	ADVOCATE WORKSTATIONS	---	ALUM	3'-0"	7'-2"	PREFIN	IG	-	ALUM	PREFIN	IG	---	---	FV DOOR HEIGHT

GENERAL NOTES

A IG = INSULATING GLASS

B MG = MONOLITHIC FLOAT GLASS TEMPERED

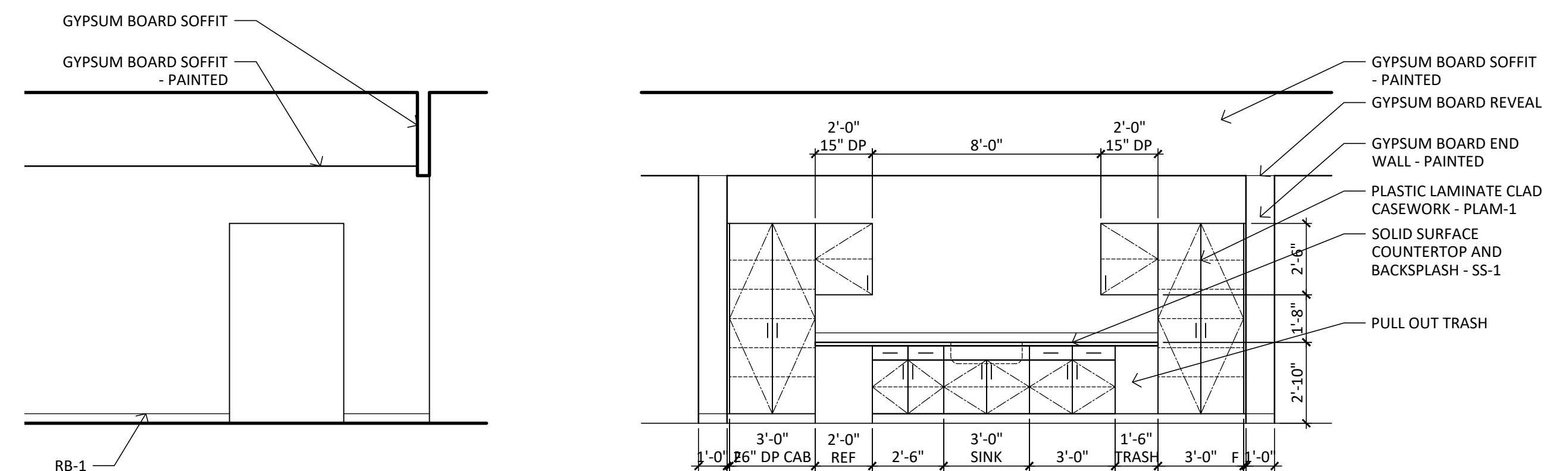
KEYED REMARKS

1

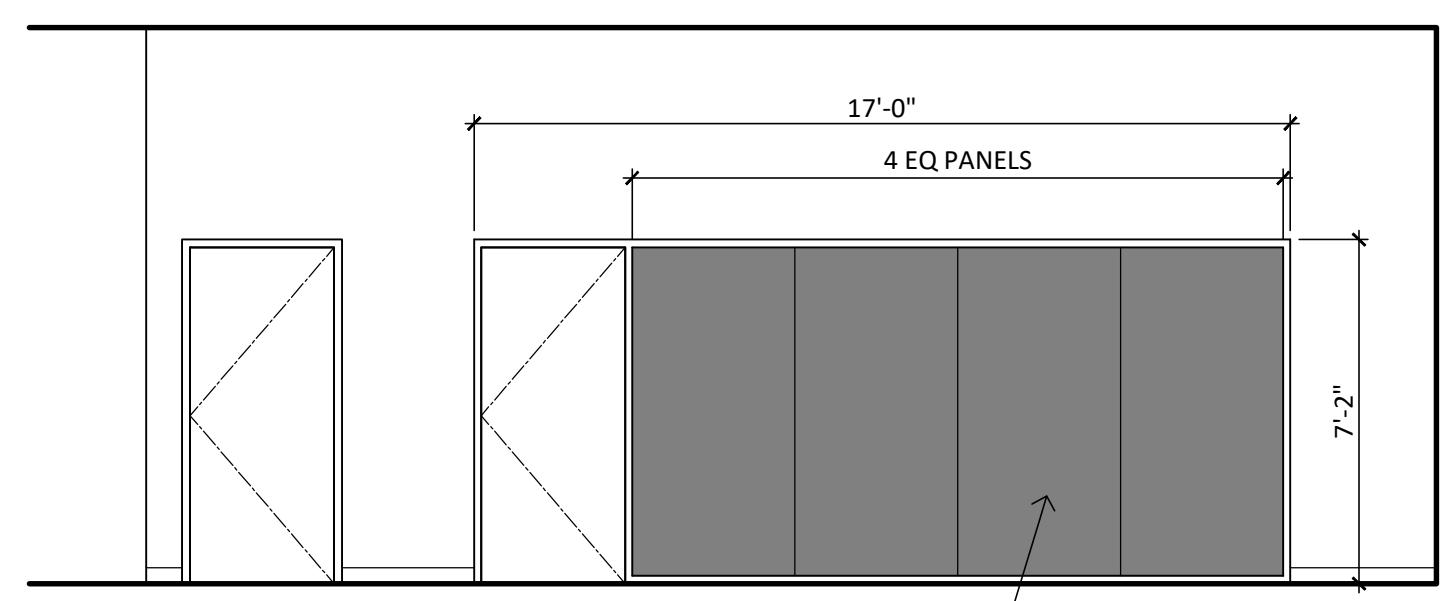
2

INTERIOR FINISH LEGEND

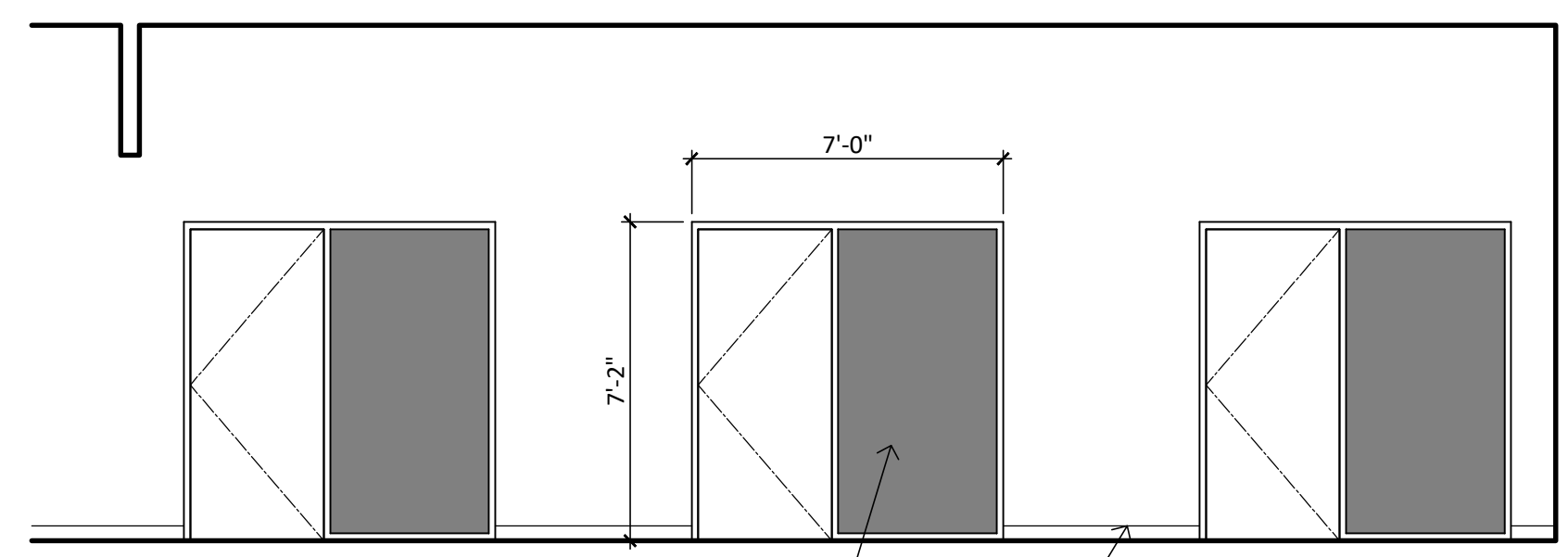
KEYNOTE	DESCRIPTION	BASIS OF DESIGN PRODUCT
PLAM-1	PLASTIC LAMINATE CASEWORK	FORMICA, 1547-PG NOIR CEDAR, PURE GRAIN TEXTURE.
PLAM-2	PLASTIC LAMINATE CASEWORK	FORMICA, 1545-PG RAW CEDAR, PURE GRAIN TEXTURE.
SS-1	SOLID SURFACE COUNTERTOP	CORIAN, COLOR = ARROWROOT.
RB-1	RESILIENT BASE	TARKETT, COVED BASE, 4" PROFILE, 63 BURNT UMBER B.
CLG-1	ACOUSTICAL CEILING TILES (2X2)	ARMSTRONG, CIRRUS, 24 X 24 BEVELED TEGULAR LAY-IN CEILING PANELS.
CLG-2	ACOUSTICAL CEILING TILES (2X2 MOISTURE RESISTANT)	PAINTED GYPSUM BOARD PANELS
CPT-1	CARPET TILE	TBD
CPT-2	CARPET TILE	TBD
CPT-3	CARPET TILE	TBD
PA-1	PAINT (CEILINGS)	SHERWIN WILLIAMS - SW7069 IRON ORE, FLAT SHEEN.
PA-2	PAINT (PRIMARY INTERIOR)	SHERWIN WILLIAMS - SW 9166 DRIFT OF MIST, EG-SHEL SHEEN.
PA-3	PAINT (ACCENT INTERIOR)	SHERWIN WILLIAMS - SW 7051 ANALYTICAL GRAY, EG-SHEL SHEEN.
PA-4	PAINT (ACCENT INTERIOR)	SHERWIN WILLIAMS - SW 6207 RETREAT, EG-SHEL SHEEN.
PA-5	PAINT (ACCENT INTERIOR)	SHERWIN WILLIAMS - SW7069 IRON ORE, SEMI-GLOSS SHEEN.
WT-1	MESH ROLLER SHADES	VERIFY MANUFACTURER



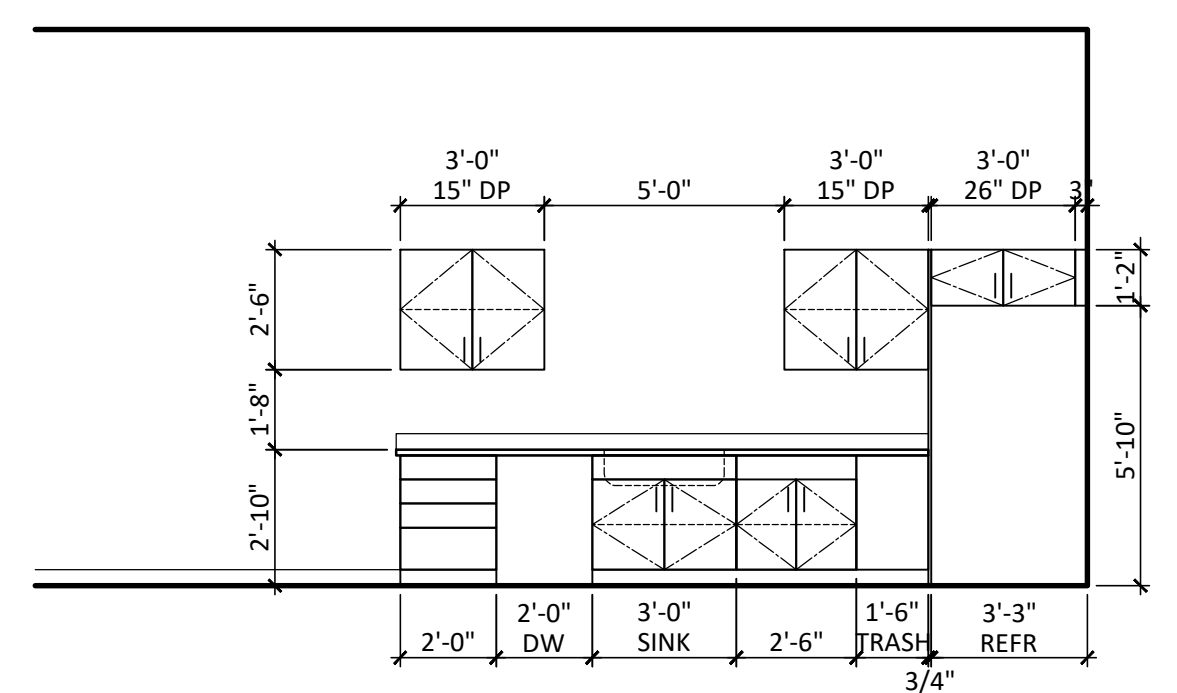
01 INTERIOR ELEVATION
AT WAITING AREA
SCALE - 1/4" = 1'-0"



02 INTERIOR ELEVATION
AT CONFERENCE ROOM
SCALE - 1/4" = 1'-0"



03 INTERIOR ELEVATION
AT ADVOCATE WORKSTATIONS
SCALE - 1/4" = 1'-0"



04 INTERIOR ELEVATION
AT STAFF BREAKROOM
SCALE - 1/2" = 1'-0"