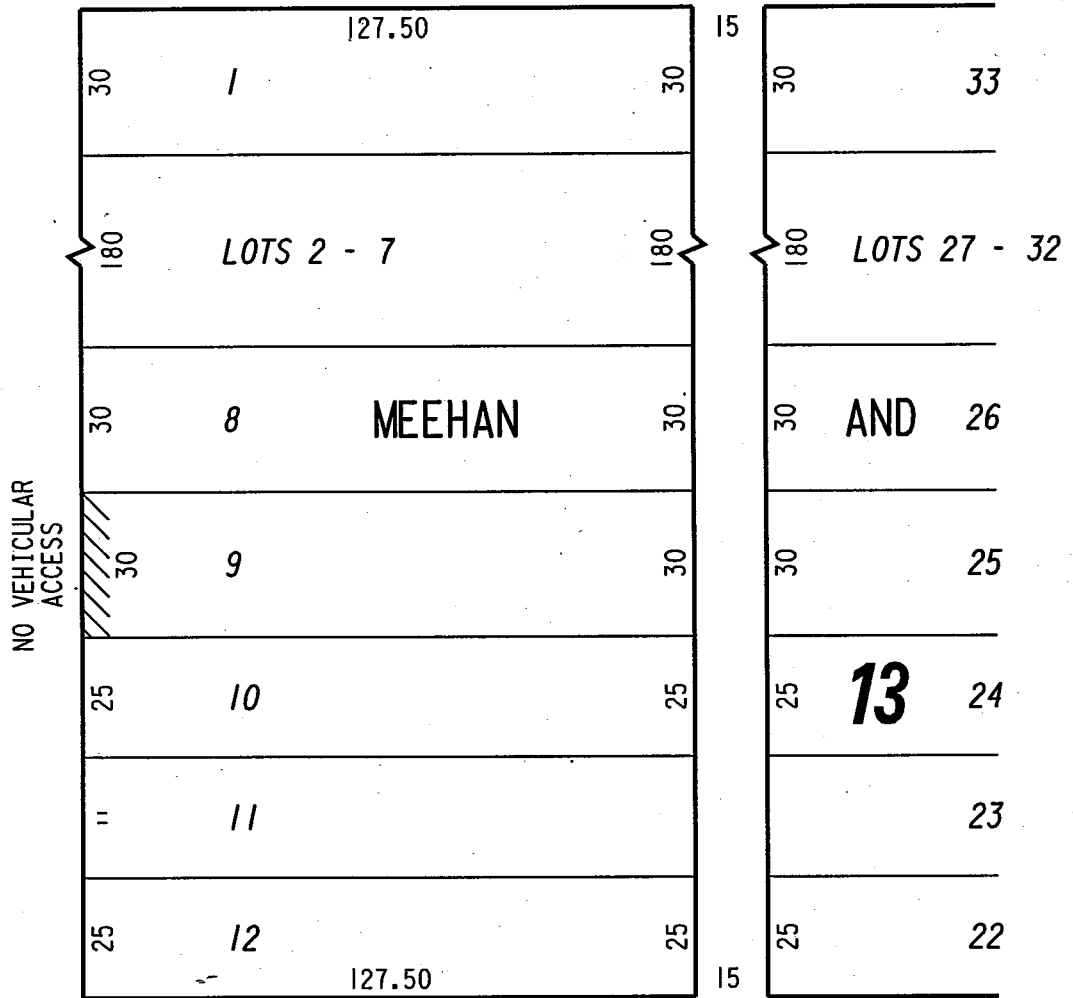


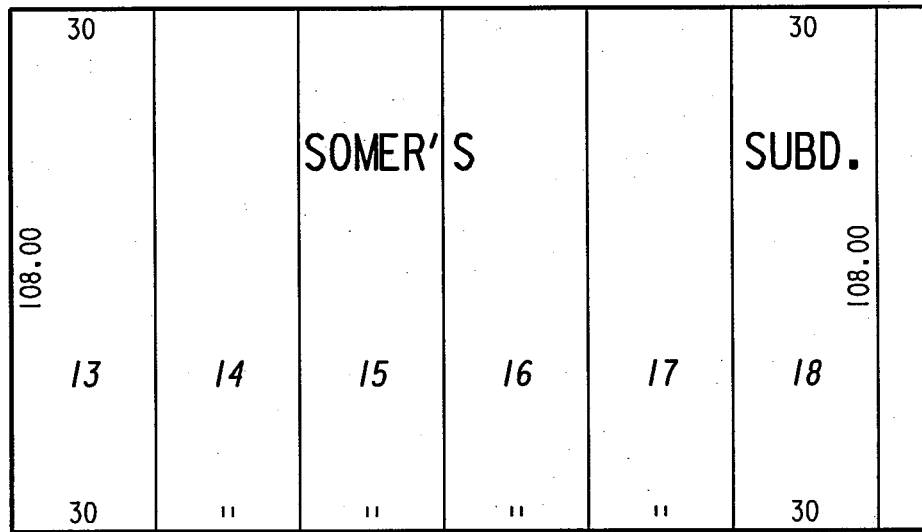
W. Lloyd St. (60' R.O.W.)

St.



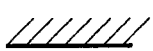
(60' R.O.W.)

N. 25th



(60' R.O.W.)

W. Brown St.



NO VEHICULAR ACCESS RESTRICTION TO BE RELEASED

FILE NO.

INFRASTRUCTURE SERVICES DIVISION

MILWAUKEE, WISCONSIN

ASSIGNED TO: W.E. FUCHS

CH'K'D. BY: M.C. WILLIAMS

DRAWN BY: W.E.F.

DATE: SEPT. 10, 2001

PROJECT/GRANT NO.: WK52360031

SCALE: 1" = 40'

APPROVED BY:

Marcia Lindholm

CENTRAL DRAFTING & RECORDS MANAGER

City Engineer