

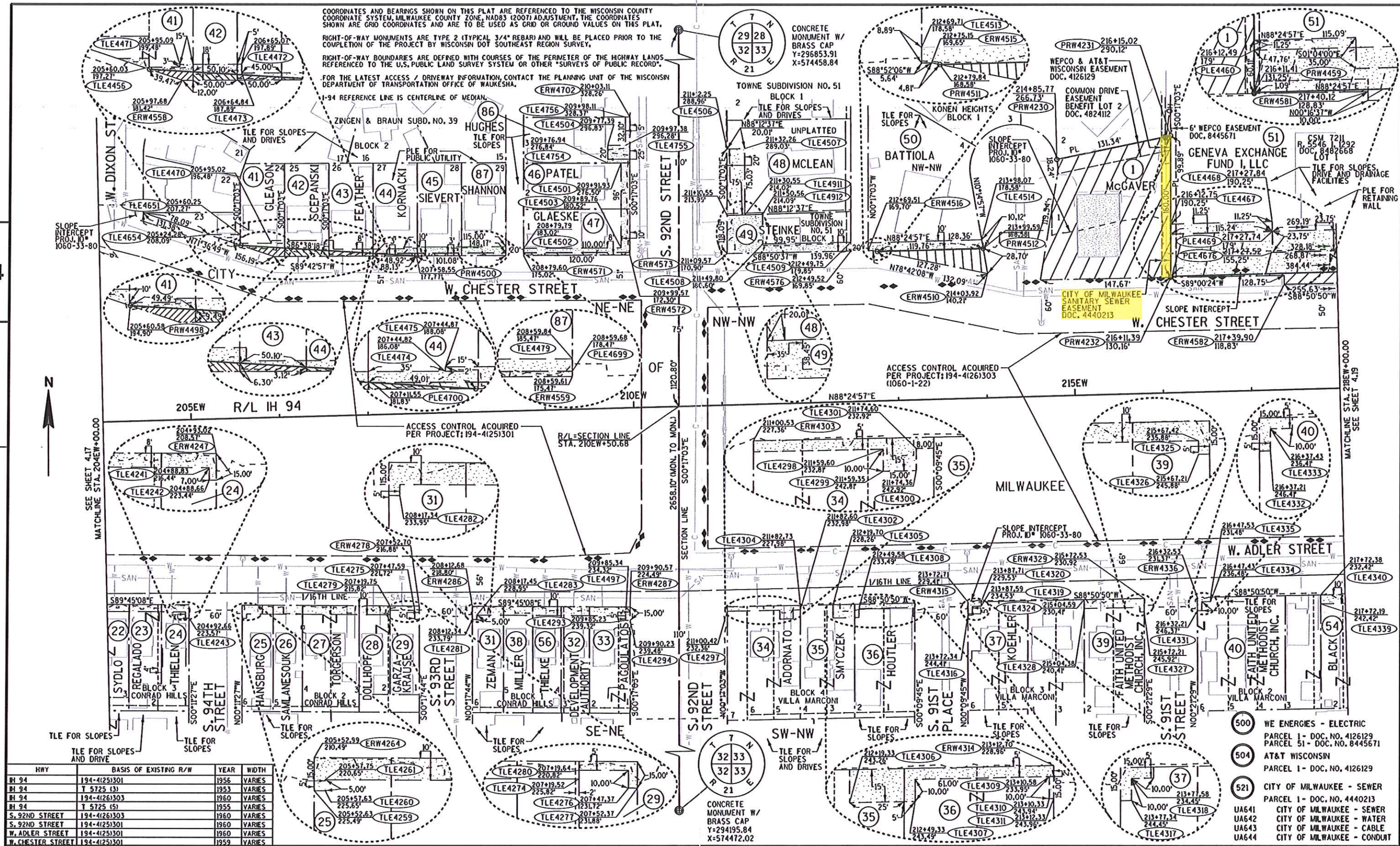
COORDINATES AND BEARINGS SHOWN ON THIS PLAT ARE REFERENCED TO THE WISCONSIN COUNTY COORDINATE SYSTEM, MILWAUKEE COUNTY ZONE, NAD83 (2007) ADJUSTMENT, THE COORDINATES SHOWN ARE GRID COORDINATES AND ARE TO BE USED AS GRID OR GROUND VALUES ON THIS PLAT.

RIGHT-OF-WAY MONUMENTS ARE TYPE 2 (TYPICAL 3/4" REBAR) AND WILL BE PLACED PRIOR TO THE COMPLETION OF THE PROJECT BY WISCONSIN DOT SOUTHEAST REGION SURVEY.

RIGHT-OF-WAY BOUNDARIES ARE DEFINED WITH COURSES OF THE PERIMETER OF THE HIGHWAY LANDS REFERENCED TO THE U.S. PUBLIC LAND SURVEY SYSTEM OR OTHER "SURVEYS OF PUBLIC RECORD".

FOR THE LATEST ACCESS / DRIVEWAY INFORMATION CONTACT THE PLANNING UNIT OF THE WISCONSIN DEPARTMENT OF TRANSPORTATION OFFICE OF WAUKESHA.

I-94 REFERENCE LINE IS CENTERLINE OF MEDIAN.



HWY	BASIS OF EXISTING R/W	YEAR	WIDTH
IH 94	194-41251301	1956	VARIES
IH 94	T 5725 (3)	1953	VARIES
IH 94	194-41261303	1960	VARIES
IH 94	T 5725 (5)	1955	VARIES
S. 92ND STREET	194-41261303	1960	VARIES
S. 92ND STREET	194-41251301	1960	VARIES
W. ADLER STREET	194-41251301	1960	VARIES
W. CHESTER STREET	194-41251301	1959	VARIES

REVISION DATE DEC. 17, 2012 APRIL 24, 2014
 MAY 23, 2012 APR. 17, 2013
 JULY 11, 2012 AUG. 29, 2013
 SEP. 28, 2012 JAN. 17, 2014

DATE FEB. 29, 2012
 SCALE, FEET
 0 50 100

HWY: IH 94
 COUNTY: MILWAUKEE

STATE R/W PROJECT NUMBER 1060-33-24
 CONSTRUCTION PROJECT NUMBER 1060-33-81

PLAT SHEET 4.18
 PS&E SHEET E