



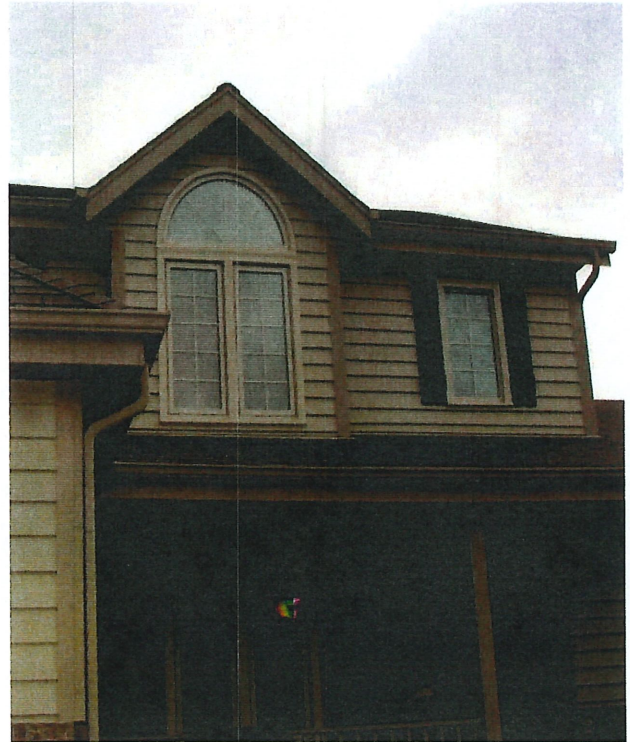
16680 W Cleveland Ave., New Berlin, WI 53151
 www.wascowindows.com

WASCO 1800 SERIES OUTSWING CASEMENT WINDOWS

Manufactured using Rehau RAU-PVC extrusions, this window is the finest outswing casement window available in North America!

Features

- Three seals prevent air infiltration and reduce convective heat transfer between the sash and frame.
- The vinyl replacement windows feature thick-walled, heavy weight Rehau RAU-PVC extrusions. Multiple chambers in the sash and frame eliminate the need for foam filling creating stronger corner welds. The frames are reinforced with galvanized steel when necessary, to meet our high performance standards.
- The picture window perfectly matches the appearance of the casement window for multi-lite installations.
- A choice of high and low solar heat gain glazing is available. Triple pane is optional.
- The windows feature the highest quality operators, locks and folding handles.
- Available in white and almond vinyl, with optional wood grain interior with Renolit Exofol MX exterior-grade foil.
- The screens are easily removed and durable.



Colors and Finishes

<i>Vinyl Color</i>	<i>Interior Finishes</i>
White	White, Medium Oak, Irish Oak, Heartwood, Maple
Almond	Almond, Medium Oak, Irish Oak, Heartwood, Maple

Additionally, standard and custom exterior finishes are available with any interior finish.

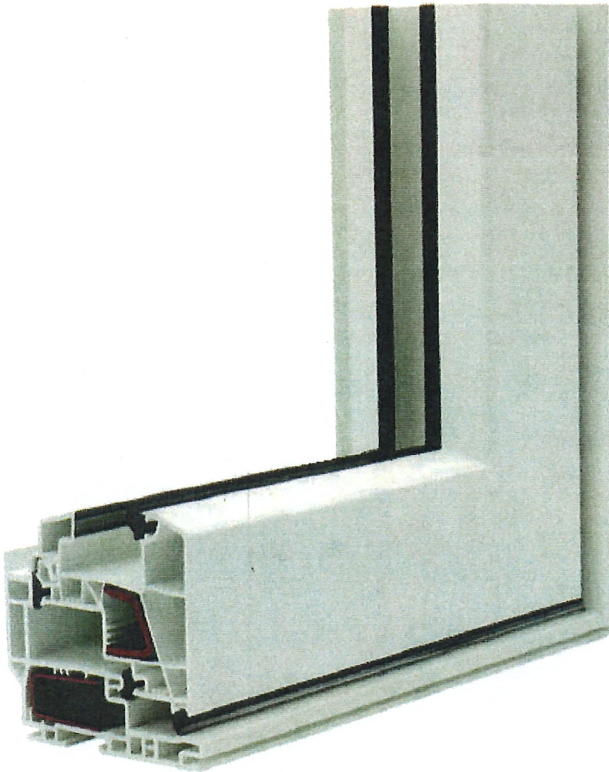
Options

High or low solar heat gain glazing for passive solar design or for tailoring windows for optimal performance according to exposure (the direction they face) is available at no charge.

Optional triple pane glass is available with high or low solar heat gain.

A variety of internal (between the glass) grids are available.

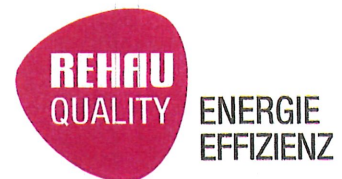
Architectural finishes including satin nickel and antique brass on the operators and locks are offered.



Performance

	<i>LoE³ 366 Dual Pane</i>	<i>LoE 180 Dual Pane</i>	<i>Triple Pane (Low SHGC)</i>	<i>Triple Pane (High SHGC)</i>
U-Factor (Btu/hr-ft ² °F)	0.26	0.27	0.18	0.18
Solar Heat Gain Coefficient (SHGC)	0.17	0.40	0.16	0.35

NFRC performance for the WASCO 1800 Window, no internal grids



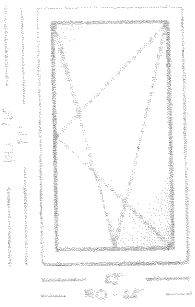
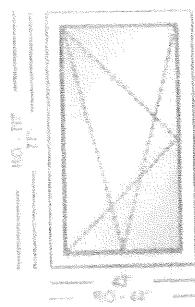
Status: Ordered
 Shipping Method: CNS Truck
 Customer PO: 20876

DEALER ACKNOWLEDGEMENT

Quote #: 126714
 Order Date: 1/21/2020
 Est. Ship Date: 2/18/2020
 Quote Name: Gorak

WINDOW ASSOCIATES SUPPLY CO.

ALL UNITS VIEWED FROM EXTERIOR

Item / Ref.	Details	Qty	Each	Total
1 UPSTAIRS 	Product Type = Tilt Turn Measurement Type = Frame Size Frame Width = 43 Frame Height = 77 Interior Color = White Exterior Color = White LoE Option = LoE 180 Glazing Type = Dual Pane Spacer Option = Black Glass Strength = Annealed Screen Option = Full Screen Interior Hardware Color = Euro Silver Exterior Trim Option = Nail Fin Interior Returns = 3/4" Jamb/Header Return	1		
2 UPSTAIRS 	Product Type = Tilt Turn Measurement Type = Frame Size Frame Width = 43 Frame Height = 77 Interior Color = White Exterior Color = White LoE Option = LoE 180 Glazing Type = Dual Pane Spacer Option = Black Glass Strength = Annealed Screen Option = Full Screen Interior Hardware Color = Euro Silver Exterior Trim Option = Nail Fin Interior Returns = 3/4" Jamb/Header Return	1		



16680 W Cleveland Ave., New Berlin, WI 53151

www.wascowindows.com



WASCO 700 SERIES HUNG & SLIDER WINDOWS

Manufactured using REHAU RAU-PVC extrusions, the 700 series windows provide the highest performance available.



Features

- Multi-chambered frame and sash extrusions increase strength, improve energy efficiency, and allow efficient water drainage. The extrusions feature pockets for reinforcement when necessary.
- Pocket sill on the double hung window sets the sash into the frame, providing high structural performance.
- Available brickmold and sill allow for complete tear-out of existing windows.
- Available in white and almond REHAU RAU-PVC, with optional wood grain interior and custom exterior colors.



16680 W Cleveland Ave., New Berlin, WI 53151
www.wascowindows.com



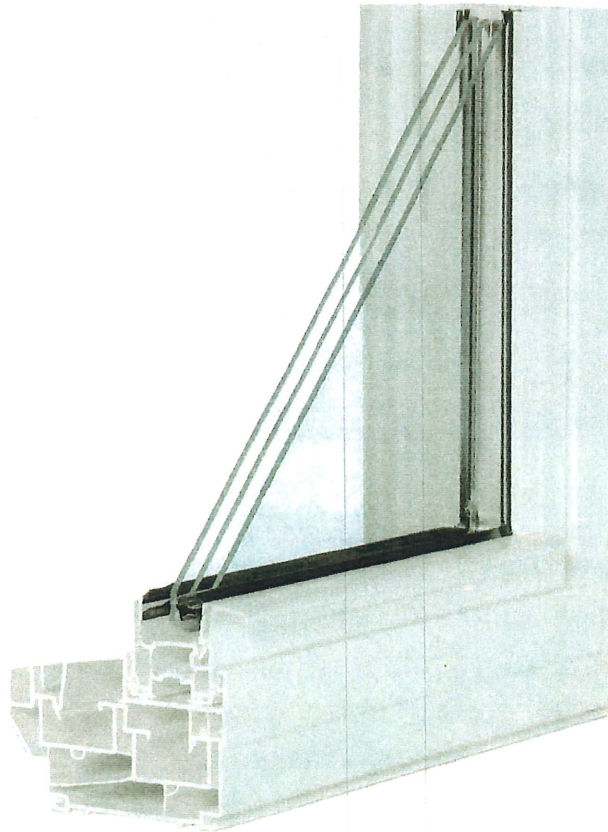
Colors and Finishes

<i>Frame Color</i>	<i>Interior Finishes</i>
White	White, Medium Oak, Irish Oak, Heartwood, Maple
Almond	Almond, Medium Oak, Irish Oak, Heartwood, Maple

Performance

	<i>LoE³ 366 Dual Pane</i>	<i>LoE 180 Dual Pane</i>	<i>Triple Pane (Low SHGC)</i>	<i>Triple Pane (High SHGC)</i>
U-Factor (Btu/hr-ft ² °F)	0.27	0.29	0.22	0.23
Solar Heat Gain Coefficient (SHGC)	0.21	0.48	0.19	0.42

NFRC performance for the WASCO 700R/DH Window, no internal grids



Options

A variety of internal (between the glass) grids are available (dual pane only).

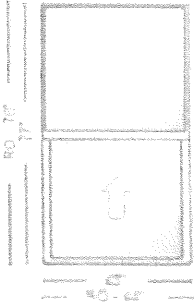
Status: Ordered
 Shipping Method: TNS Truck
 Customer PO: 20875

DEALER ACKNOWLEDGEMENT

Quote #: 129714
 Order Date: 1/21/2020
 Est. Ship Date: 2/18/2020
 Quote Name: Gorak

WINDOW ASSOCIATES SUPPLY CO

ALL UNITS VIEWED FROM EXTERIOR

3	Item / Ref.	Details	Qty	Each	Total
<p>UPSTAIRS/CAM LOCKS</p> 	<p>Product Type = 190 Single Hung Measurement Type = Frame Size Frame Width = 43 Frame Height = 77 Interior Color = White Exterior Color = White LoE Option = LoE 180 Glazing Type = Dual Pane Spacer Option = Black Glass Strength = Annealed Screen Option = Flex Screen Interior Hardware Color = White Limiter Device = Vent Lock Exterior Trim Option = Nail Fin Interior Returns = 3/4" Jamb/Header Return</p>	2			

Thank you for your business.

Subtotal	
Sales Tax	\$0.00
Total	

Wasco

16680 W Cleveland Ave
New Berlin, WI 53151 US
accounting@wascowindows.com
wascowindows.com



INVOICE

BILL TO
Greg Gorak
530 N. Water LLC c/o 1123 S. 25th Street
Milwaukee, WI 53204

INVOICE 20876
DATE 06/16/2020
TERMS Due on receipt
DUE DATE 06/16/2020

DATE	ACTIVITY	DESCRIPTION	QTY	RATE	AMOUNT
	Windows	Install 2 Rehau Tilt n Turns and 2 Rehau single hung vinyl replacement windows.	1	6,000.00	6,000.00
	Customer Deposit - down payment	deposit received	1	-6,000.00	-6,000.00
	Windows	Change order 6656 dated 12-20-19 <i>Install</i>	1	2,000.00	2,000.00
BALANCE DUE					\$2,000.00

AUTHORIZATION FOR CHANGE OF SPECIFICATIONS 6656

To: WASCO

Date 6/5/2020

I hereby authorize and assume responsibility for the following changes from the original plans and specifications of my Estimate and Proposal No. 20876 dated 12-20-2019

- now WASCO will open up the 3 bricked in openings and enclose hole from discarded vent with 2x4 framing / plywood and white vent. soffit
- This price includes removing 1 layer of cinder block 1 layer of brick

Previous Balance Due on Completion = \$ 0
New Balance Due on Completion = \$ 2,000.-

ADDITIONAL COST
\$2,000.-

Approved and Accepted:

By: Gregory S Gorak
Customer's Signature

[Signature]
Installer or Salesman's Signature

Greg Gorak

Customer's Name (Print)

530 N Water St.

Job Address

Milwaukee

