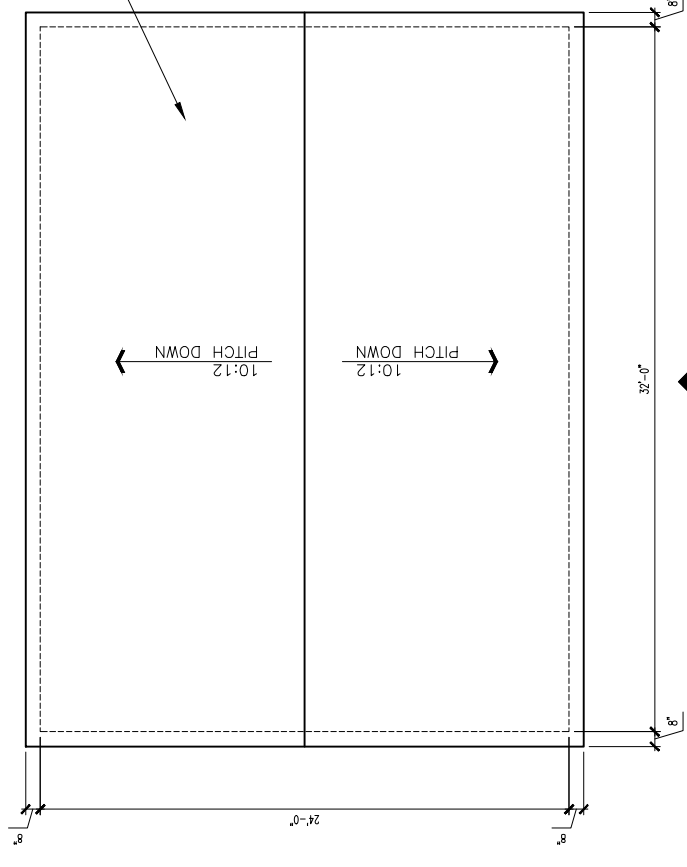


3
A2



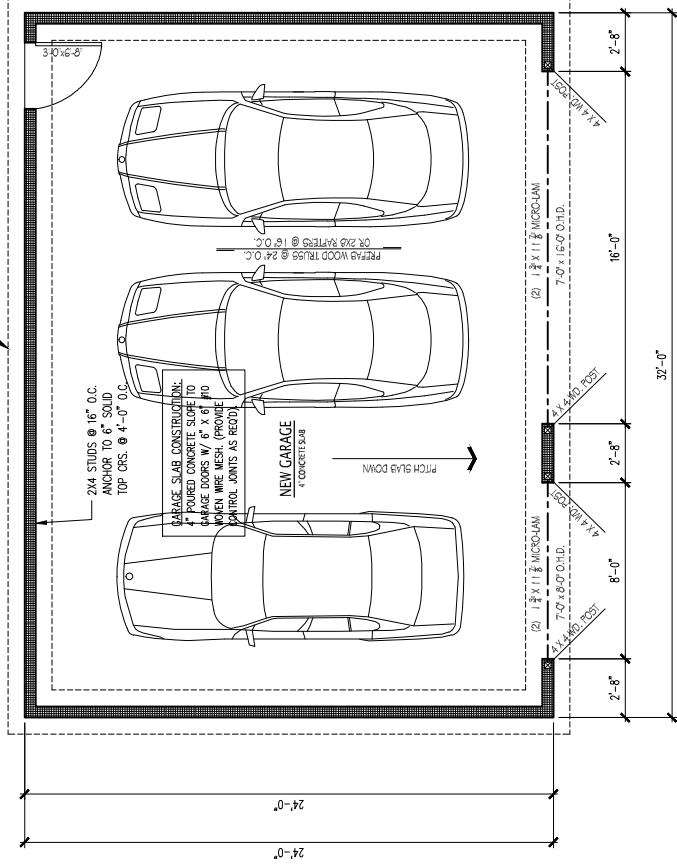
ROOF SYSTEM
DIMENSIONAL
(AS SELECTE
#15 BLDG. F
ON 1/2" OS
PREFAB TRU
2X8 RAFTER

2
A2



ROOF PLAN
SCALE: 1/4" = 1'-0"

3
A2



8"x24" FTG.
(2) #4 REBARS CONT.

2x4 STUDS @ 16" O.C.
ANCHOR TO 6" SOLID
TOP CRS. @ 4'-0" O.C.

GARAGE SLAB CONSTRUCTION:
POURED CONCRETE SLAB TO
GARAGE DOORS W/ 6" X 6" #10
WIRE MESH (PROVIDE
CONTROL JOINTS AS REQ'D)

NEW GARAGE
CONCRETE SLAB

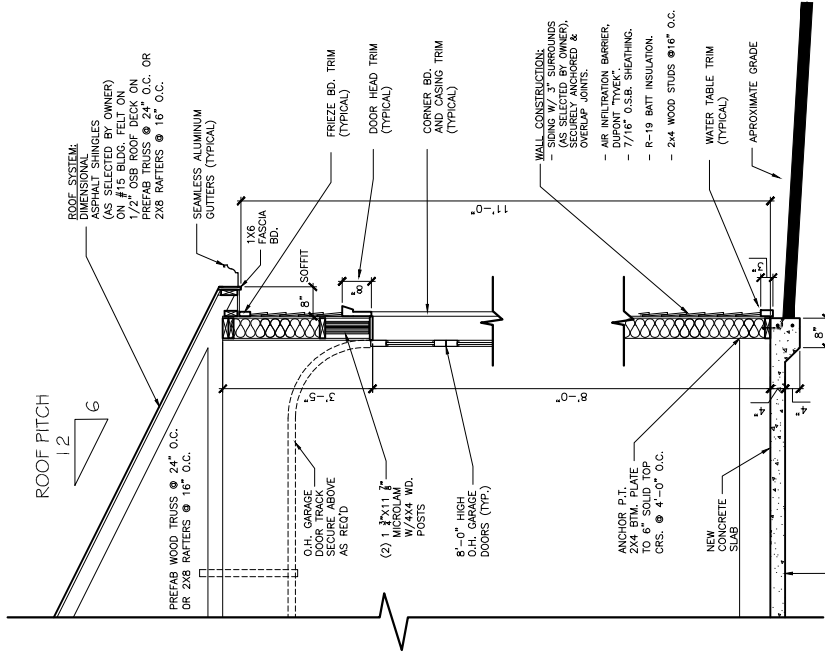
PREFAB WOOD TRUSS @ 16" O.C.
OR 2X8 RAFTERS @ 16" O.C.

1
A2



FLOOR PLAN
SCALE: 1/4" = 1'-0"

2
A2



ROOF PITCH
12
6

ROOF SYSTEM:
PREFAB WOOD TRUSS @ 24" O.C.
OR 2X8 RAFTERS @ 16" O.C.
SEAMLESS ALUMINUM
GUTTERS (TYPICAL)

1x6 FASCIA
BD.
5" SOFFIT

O.H. GARAGE
DOORS TO BE
SECURE ABOVE
AS REQ'D

(2) 1" X 11" W/
W/2x4 WD.
POSTS

8'-0" HIGH
O.H. GARAGE
DOORS (TYP.)

WALL CONSTRUCTION:
- 2x4 STUDS @ 16" O.C.
(AS SELECTED BY OWNER)
- 7/16" O.S.B. SHEATHING,
DUPONT "TYVEK"
- R-19 BATT INSULATION.
- 2x4 WOOD STUDS @ 16" O.C.

ANCHOR P.T.
2x4 BTM. PLATE
TO 6" SOLID TOP
CRS. @ 4'-0" O.C.

NEW CONCRETE
SLAB

WATER TABLE TRIM
(TYPICAL)

APPROXIMATE GRADE

GARAGE SLAB CONSTRUCTION:
POURED CONCRETE SLAB WITH
CONCRETE. THE SLAB SHALL BE PROVIDED WITH A THICKENED EDGE ALL AROUND (GRADE BEAM) 8 INCHES
WIDE AND 8 INCHES BELOW THE TOP OF THE SLAB W/ (2) #4 REBARS LOCATED 2 INCHES FROM THE
OUTER EDGE. THE THICKENED EDGE SHALL BE 7 INCHES HIGH AND 7 INCHES WIDE. THE THICKENED EDGE SHALL
SLIP SHALL BE PROVIDED. THESE SLIP STRIPS SHALL BE COMPATIBLE WITH PRESSURE TREATED LUMBER
CORNERS AND NO MORE THAN 0.72 INCH SPACING BETWEEN ANCHORS.

GARAGE WALL SECTION
SCALE: 1/2" = 1'-0"

DATE: 05/12/2020

SHEET: AS SHOWN

PROJECT DESCRIPTION:
NEW GARAGE AND RENOVATIONS
Property Located at 2908 W McKinley Boulevard
Milwaukee, Wisconsin 53208

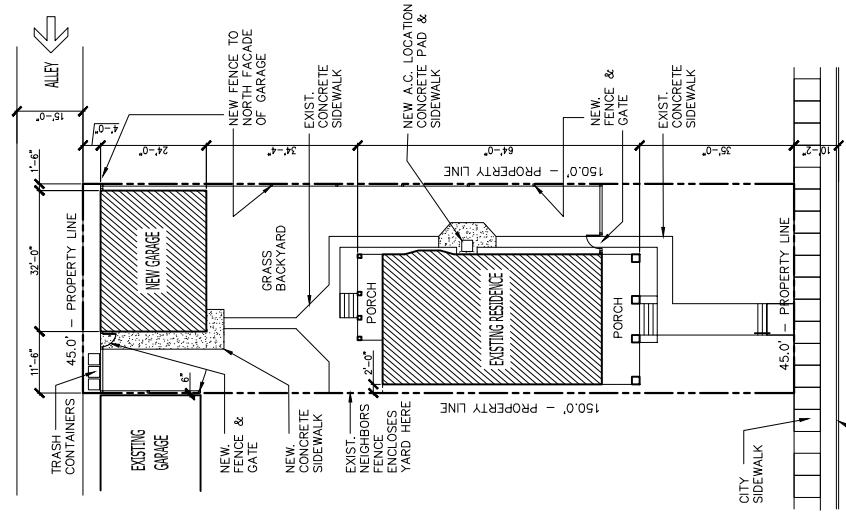
SCALE: 1" = 20'-0"

1 OF 4
A1

2908 MCKINLEY BOULEVARD
MILWAUKEE, WISCONSIN 53208



SITE PLAN
SCALE: 1" = 20'-0"



ALLEY

NEW FENCE TO
NORTH FACADE
OF GARAGE

EXIST.
CONCRETE
SIDEWALK

GRASS
BACKYARD

PORCH

EXIST.
NEIGHBORS
FENCE
ENCLOSES
YARD HERE

NEW A.C. LOCATION
CONCRETE PAD &
SIDEWALK

NEW FENCE &
GATE

EXIST.
CONCRETE
SIDEWALK

PROPERTY LINE

150.0' - PROPERTY LINE

45.0' - PROPERTY LINE

CITY SIDEWALK

STREET CURB

2908 MCKINLEY BOULEVARD
MILWAUKEE, WISCONSIN 53208



SITE PLAN
SCALE: 1" = 20'-0"

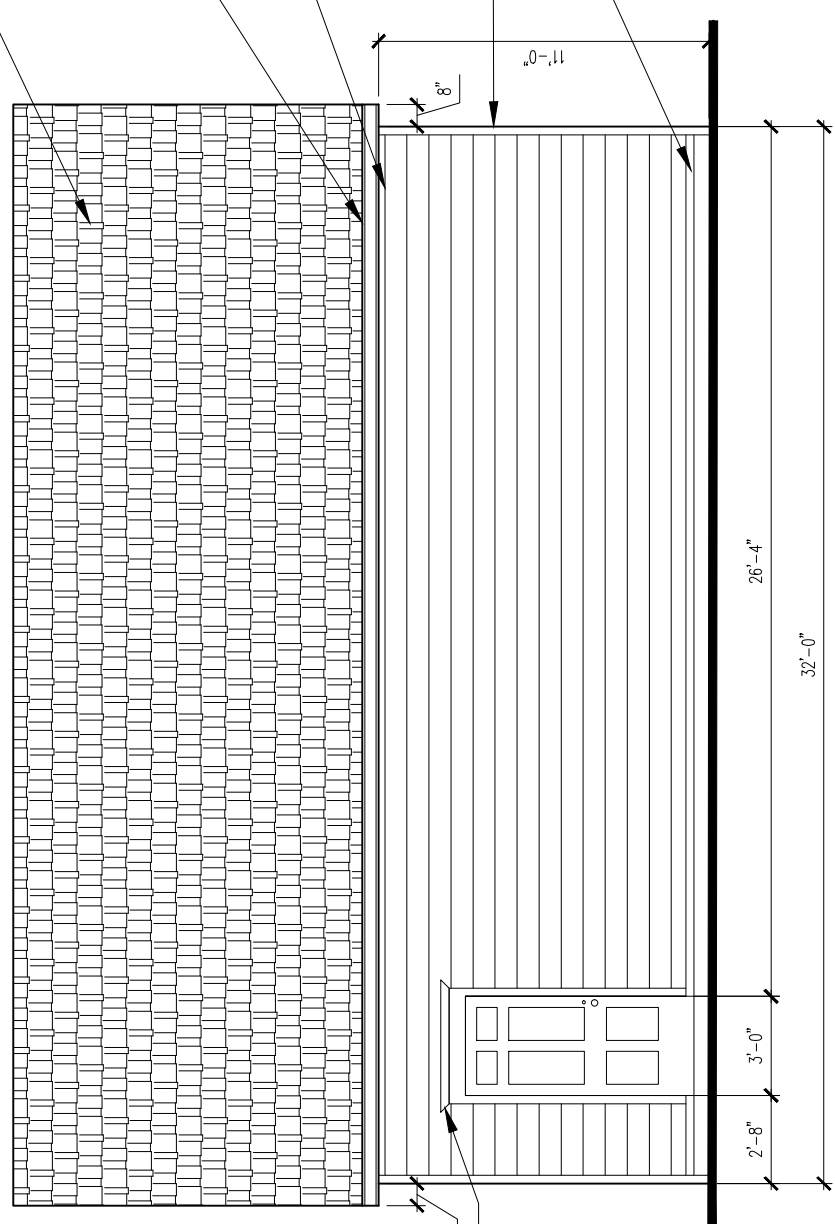
ROOF SYSTEM:
DIMENSIONAL ASPHALT SHINGLES
(AS SELECTED BY OWNER) ON
#15 BLDG. FELT
ON 1/2" OSB ROOF DECK ON
PREFAB TRUSS @ 24" O.C. OR
2X8 RAFTERS @ 16" O.C.

SEAMLESS
ALUMINUM
GUTTERS
(TYPICAL)

FRIEZE BD. TRIM
(TYPICAL)

CORNER BD. TRIM
(TYPICAL)

WATER TABLE TRIM
(TYPICAL)



3 REAR ELEVATION
SCALE: 3/8" = 1'-0"

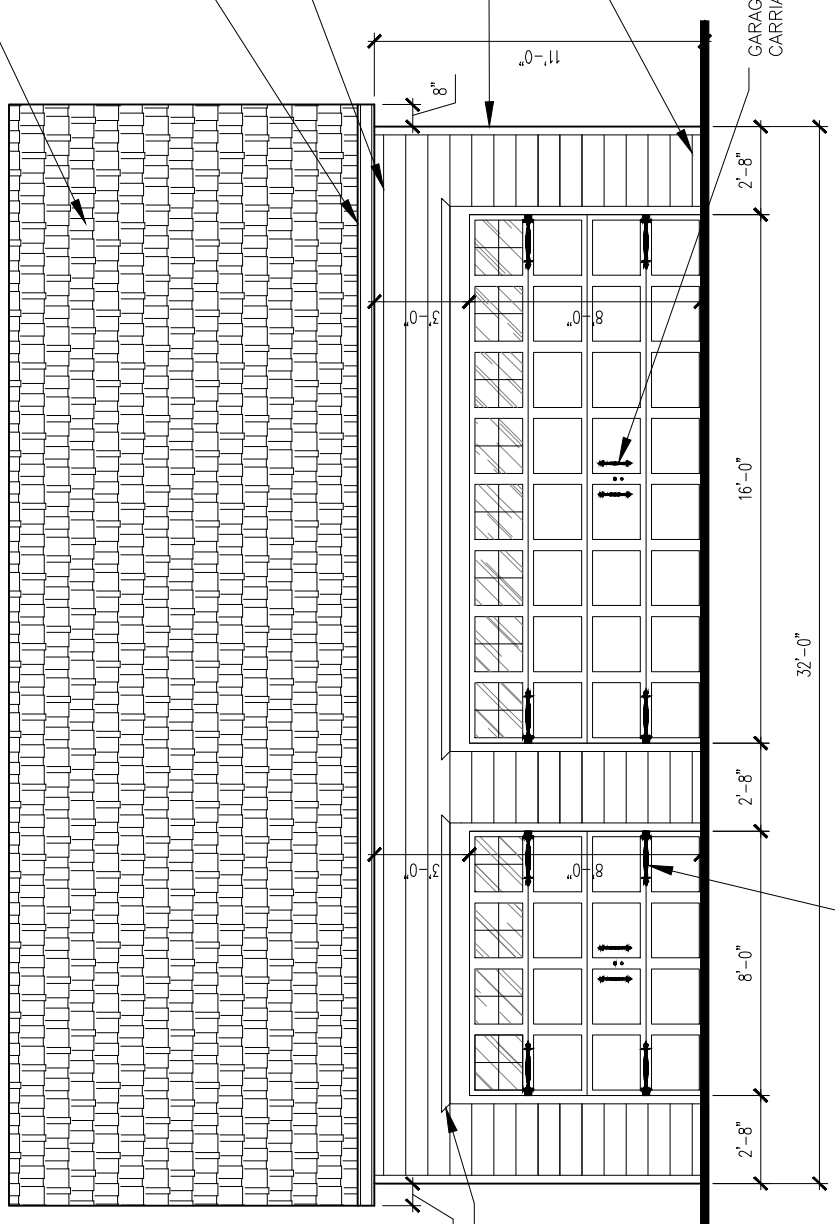
ROOF SYSTEM:
DIMENSIONAL ASPHALT SHINGLES
(AS SELECTED BY OWNER) ON
#15 BLDG. FELT
ON 1/2" OSB ROOF DECK ON
PREFAB TRUSS @ 24" O.C. OR
2X8 RAFTERS @ 16" O.C.

SEAMLESS
ALUMINUM
GUTTERS
(TYPICAL)

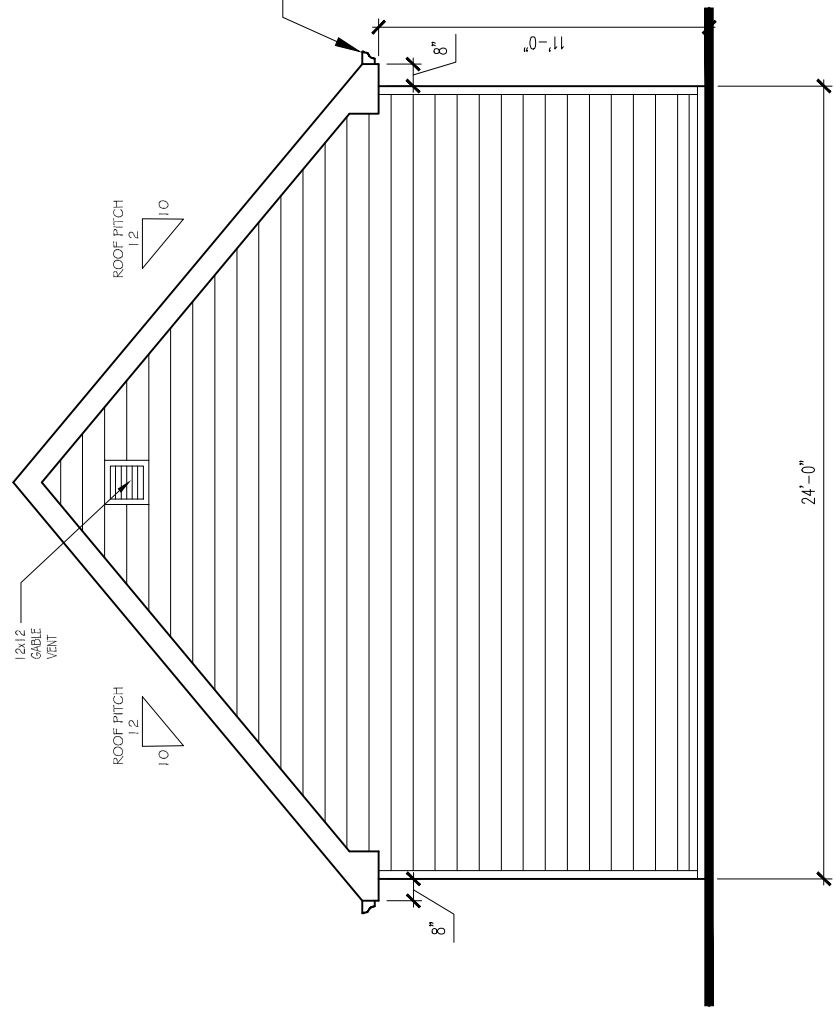
FRIEZE BD. TRIM
(TYPICAL)

CORNER BD. TRIM
(TYPICAL)

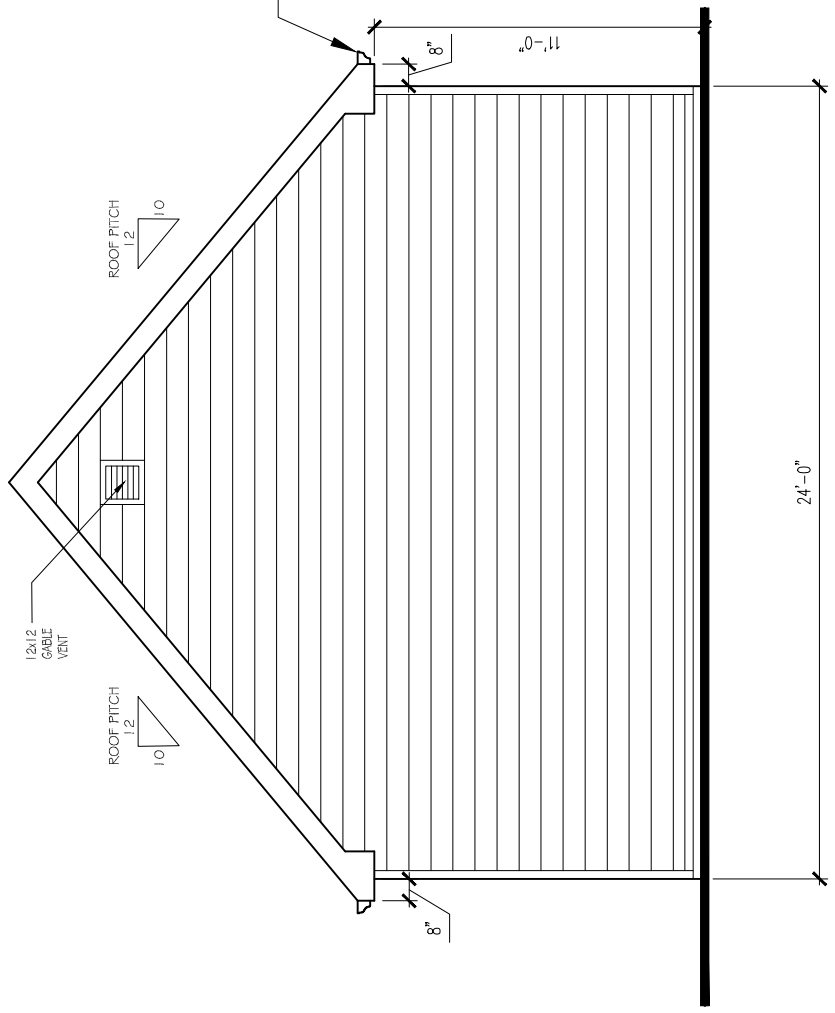
WATER TABLE TRIM
(TYPICAL)



1 FRONT ELEVATION
SCALE: 3/8" = 1'-0"



4 LEFT ELEVATION
SCALE: 3/8" = 1'-0"

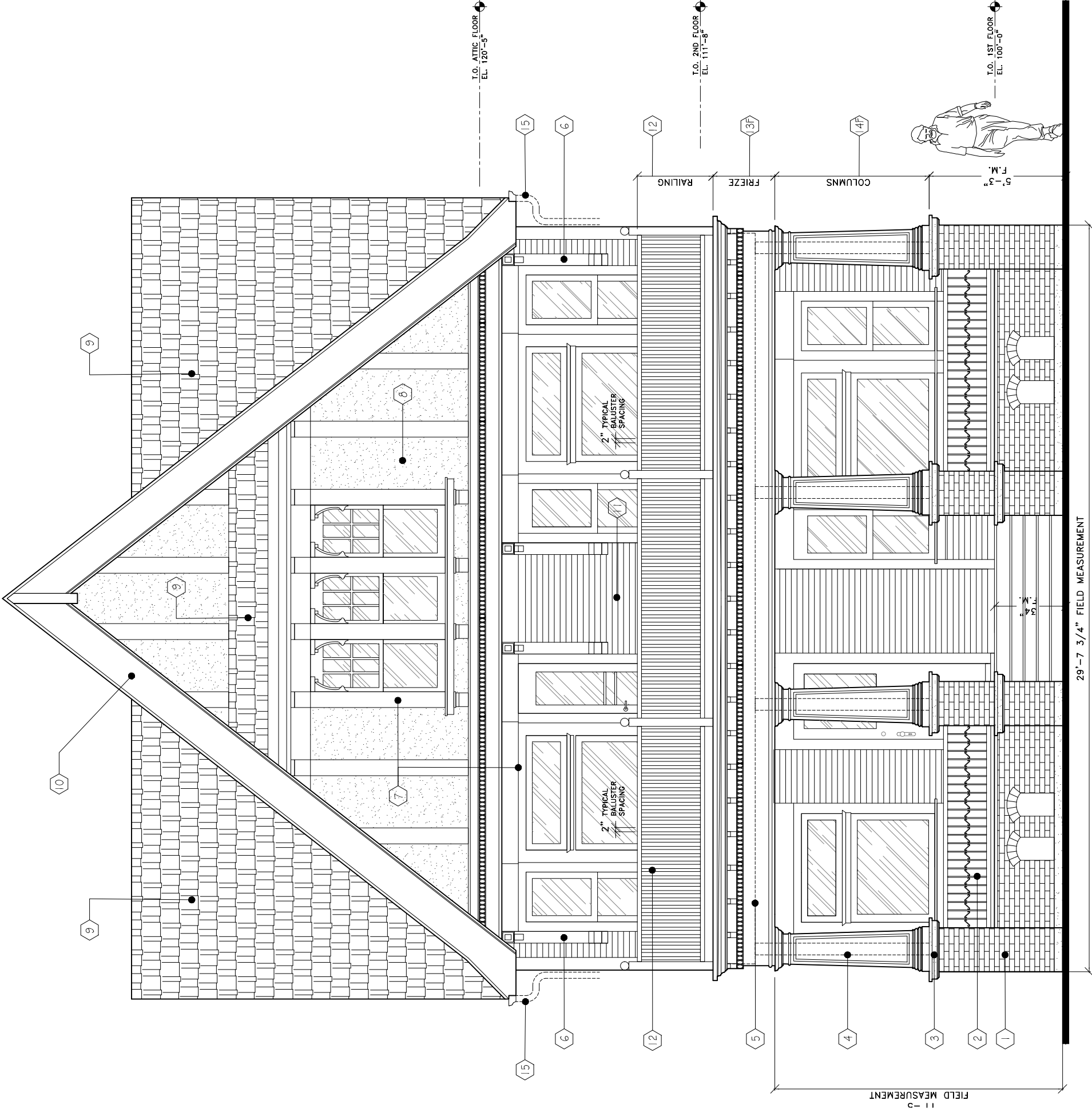


2 RIGHT ELEVATION
SCALE: 3/8" = 1'-0"

PROJECT DESCRIPTION:
NEW GARAGE AND RENOVATIONS
Property Located at 2908 W McKinley Boulevard
Milwaukee, Wisconsin 53208

DATE: 05/12/2020
SCALE: AS SHOWN
SHEET: A2
2 OF 4

COMPANY: 2021 - ALL RIGHTS RESERVED



29'-7 3/4" FIELD MEASUREMENT
SOUTH ELEVATION
 PROPOSED
 SCALE: 3/8"=1'-0"

ELEVATION SYMBOL KEY:

- 1 EXISTING BRICK PIERS - REPAIR AS REQD.
- 2 EXISTING METAL RAILING - PAINT COLOR SELECTED BY OWNER.
- 3 CONCRETE CAPS - TO REMAIN AS IS.
- 4 EXISTING TREATED 6x6 COLUMNS TO REMAIN.
- 5 EXISTING LVL BEAM TO REMAIN.
- 6 EXISTING KORBELS TO BE PAINTED COLOR TO BE SELECTED BY OWNER.
- 7 EXISTING WOOD TRIM TO BE PAINTED COLOR TO BE SELECTED BY OWNER.
- 8 EXISTING STUCCO SURFACE TO BE PAINTED COLOR TO BE SELECTED BY OWNER.
- 9 NEW DIMENSIONAL ASPHALT SHINGLES.
- 10 EXISTING FASCIA & RAKE MIDG. WOOD TRIM TO BE PAINTED COLOR TO BE SELECTED BY OWNER.
- 11 EXISTING WOOD SIDING TO BE PAINTED COLOR TO BE SELECTED BY OWNER.
- 12 UPPER PORCH RAILING :
 RAILING - SEE MATERIAL SPECIFICATION DOCUMENT.
 POSTS - SEE MATERIAL SPECIFICATION DOCUMENT.
 FINIALS - SEE MATERIAL SPECIFICATION DOCUMENT.
 BALUSTERS - SEE MATERIAL SPECIFICATION DOCUMENT.
 (PAINT COLOR TO BE SELECTED BY OWNER)
- 13 FRIEZE TRIM :
 CROWN - SEE MATERIAL SPECIFICATION DOCUMENT.
 CORBEL - SEE MATERIAL SPECIFICATION DOCUMENT.
 EGG AND DART - SEE MATERIAL SPECIFICATION DOCUMENT.
 BEAD - SEE MATERIAL SPECIFICATION DOCUMENT.
 BOX BEAM - SEE MATERIAL SPECIFICATION DOCUMENT.
 (PAINT COLOR TO BE SELECTED BY OWNER)
- 14 COLUMNS :
 TAPERED BOX COLUMNS - SEE MATERIAL SPECIFICATION DOCUMENT.
 CROWN - SEE MATERIAL SPECIFICATION DOCUMENT.
 BEAD - SEE MATERIAL SPECIFICATION DOCUMENT.
 PANEL - SEE MATERIAL SPECIFICATION DOCUMENT.
 UPPER BASE - SEE MATERIAL SPECIFICATION DOCUMENT.
 LOWER BASE - SEE MATERIAL SPECIFICATION DOCUMENT.
 (PAINT COLOR TO BE SELECTED BY OWNER)
- 15 Replace Existing Gutters With Half-Round Gutters, As Specified.

PROJECT DESCRIPTION:
NEW GARAGE AND RENOVATIONS
 Property Located at 2908 W McKinley Boulevard
 Milwaukee, Wisconsin 53208

DATE: 05/12/2020
 SCALE: AS SHOWN
 SHEET: **A3**
 3 OF 4

NEW GARAGE AND RENOVATIONS

Property Located at 2908 W McKinley Boulevard
Milwaukee, Wisconsin 53208

PROJECT DESCRIPTION:

DATE:

05/12/2020

SCALE:

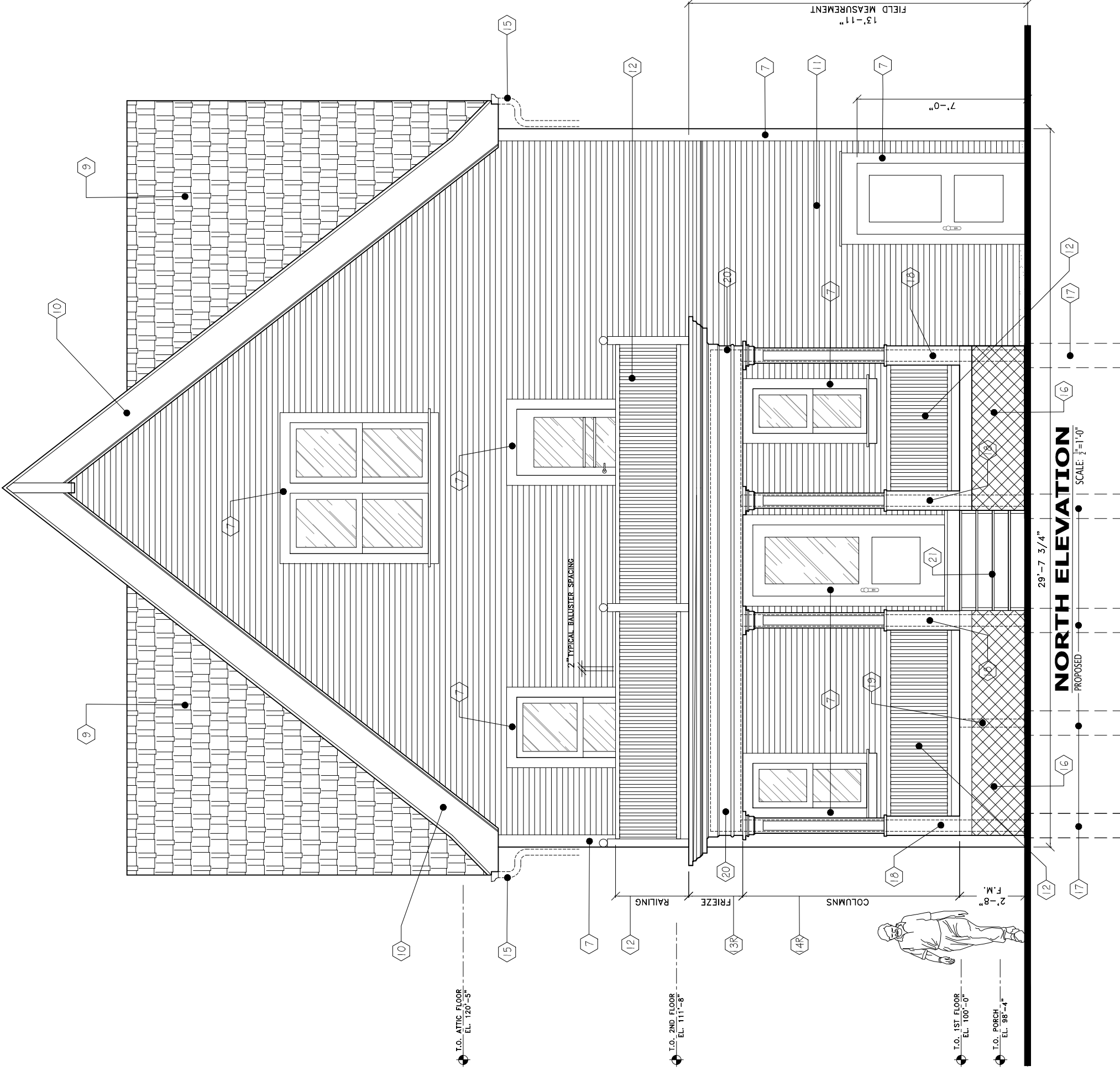
AS SHOWN

SHEET:

A4
4 OF 4

ELEVATION SYMBOL KEY:

- (7) EXISTING WOOD TRIM TO BE PAINTED COLOR TO BE SELECTED BY OWNER.
- (9) NEW DIMENSIONAL ASPHALT SHINGLES.
- (10) EXISTING FASCIA & RAKE MLDG. WOOD TRIM TO BE PAINTED COLOR TO BE SELECTED BY OWNER.
- (11) EXISTING WOOD SIDING TO BE PAINTED COLOR TO BE SELECTED BY OWNER.
- (12) UPPER & LOWER PORCH RAILING :
RAILING - SEE MATERIAL SPECIFICATION DOCUMENT.
POSTS - SEE MATERIAL SPECIFICATION DOCUMENT.
FINALS - SEE MATERIAL SPECIFICATION DOCUMENT.
BALUSTERS - SEE MATERIAL SPECIFICATION DOCUMENT.
(PAINT COLOR TO BE SELECTED BY OWNER)
- (3R) FRIEZE TRIM :
CROWN - SEE MATERIAL SPECIFICATION DOCUMENT.
QUARTER ROUND - SEE MATERIAL SPECIFICATION DOCUMENT.
TOP APRON - SEE MATERIAL SPECIFICATION DOCUMENT.
BEAD - SEE MATERIAL SPECIFICATION DOCUMENT.
BOX BEAM - SEE MATERIAL SPECIFICATION DOCUMENT.
(PAINT COLOR TO BE SELECTED BY OWNER)
- (4R) COLUMNS :
BOX UPPER COLUMN - SEE MATERIAL SPECIFICATION DOCUMENT.
CAPITAL TOP CAP - SEE MATERIAL SPECIFICATION DOCUMENT.
TOP APRON - SEE MATERIAL SPECIFICATION DOCUMENT.
BOX LOWER COLUMN - SEE MATERIAL SPECIFICATION DOCUMENT.
BEAD - SEE MATERIAL SPECIFICATION DOCUMENT.
HALF ROUND - SEE MATERIAL SPECIFICATION DOCUMENT.
CORNER GUARDS - SEE MATERIAL SPECIFICATION DOCUMENT.
(PAINT COLOR TO BE SELECTED BY OWNER)
- (15) Replace Existing Gutters With Half-Round Gutters, As Specified
- (16) PORCH SKIRT - Picture-Framed 4 ft. x 8 ft. Wood Lattice.
- (17) 12" DIAMETER, x 48" DEPTH SOLID CONCRETE PIERS W/ COMPACTED GRAVEL BASE.
- (18) 6X6 PRESSURE TREATED WOOD COLUMNS.
- (19) 4X4 PRESSURE TREATED WOOD COLUMN.
- (20) LVL BEAM SIZE TO MATCH EXISTING LVL BEAM AT FRONT PORCH.
- (21) 2X WOOD STEPS, TO BE PAINTED COLOR TO BE SELECTED BY OWNER.



NORTH ELEVATION
PROPOSED

SCALE: 1/8" = 1'-0"