

2013 City of Milwaukee Fetal Infant Mortality Review (FIMR) Report

City of Milwaukee Health Department



Jessica Gathirimu, MPH, CPH
Interim Director, Family and Community Health

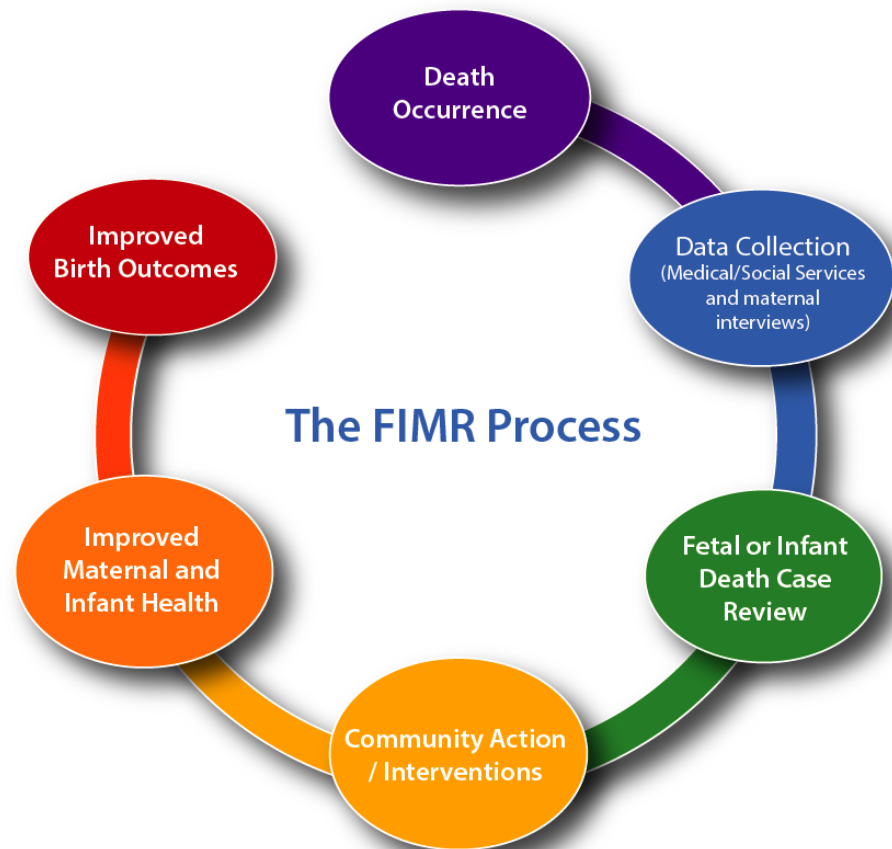
Geoffrey Swain, MD
Medical Director and Chief Medical Officer

Emmanuel Ngui, PhD
FIMR Principal Investigator
University of Wisconsin-Milwaukee
Zilber School of Public Health

February 20, 2014

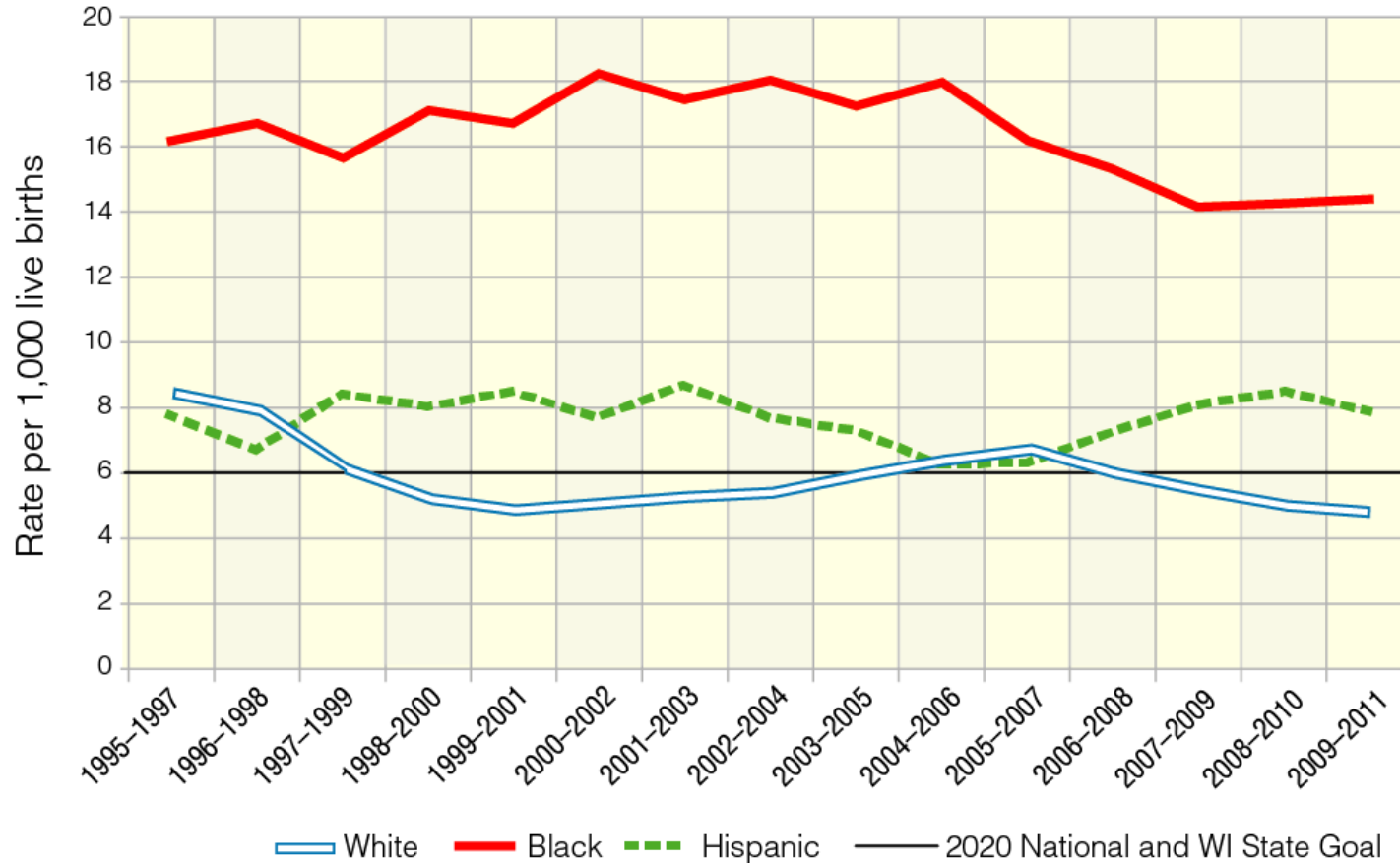
BACKGROUND: FIMR PROCESS

- The Fetal Infant Mortality Review (FIMR) team examines all stillbirths and infant deaths in the city of Milwaukee to understand the life and death circumstances of mothers and their babies, and identify factors contributing directly or indirectly to these deaths.



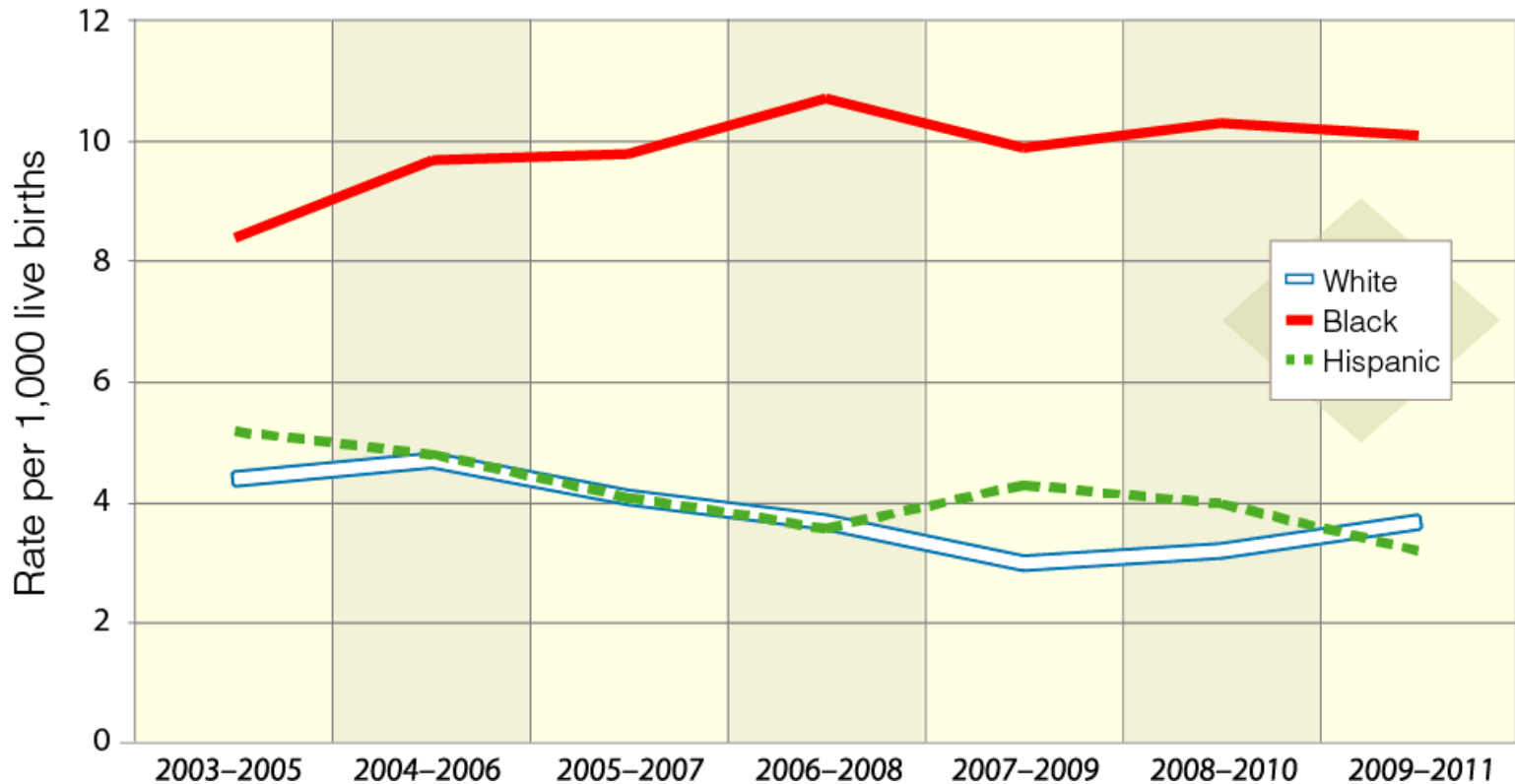
BACKGROUND: Infant Mortality

Infant Mortality by Race/Ethnicity – 3 Year Rolling Average 1995–2011 (est)
City of Milwaukee Health Department



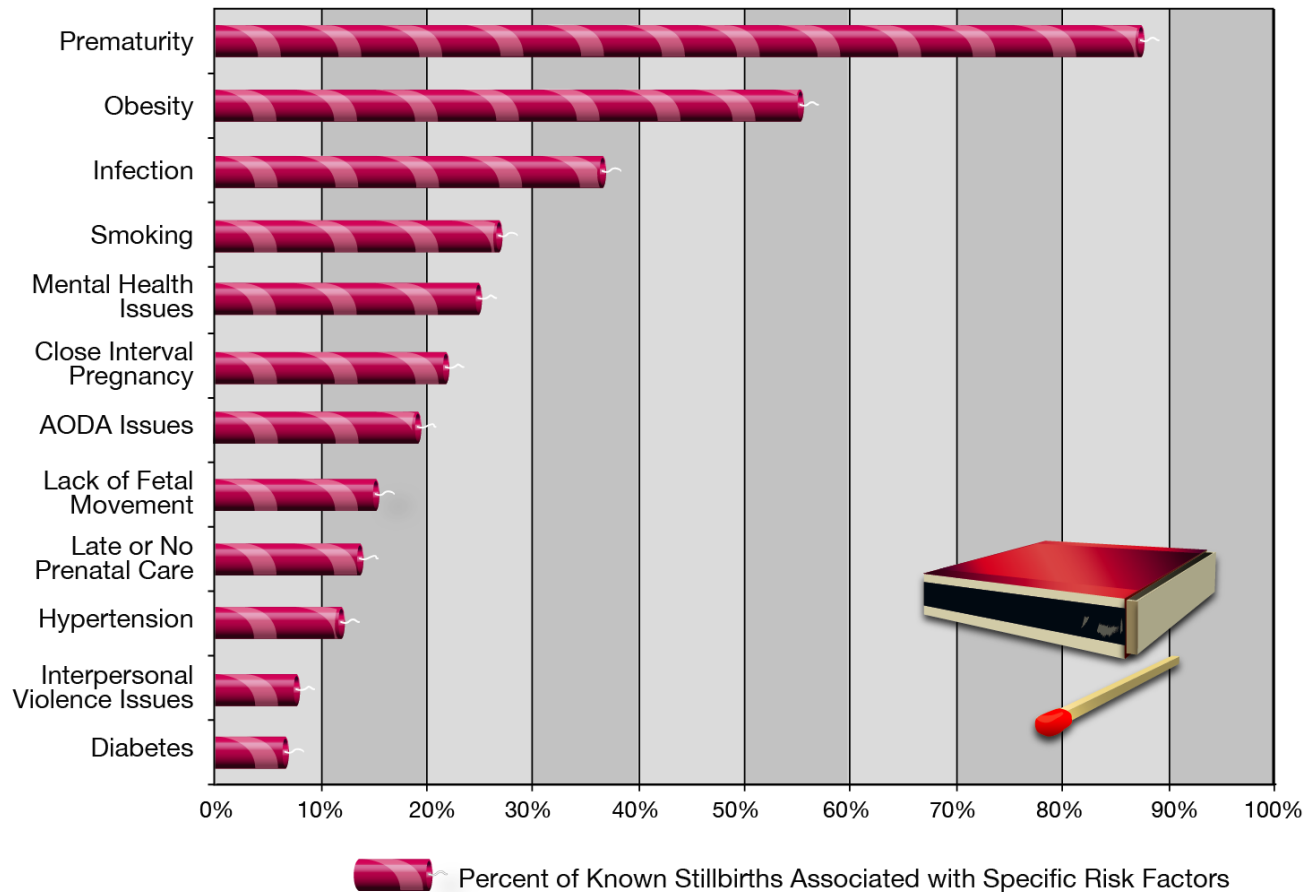
BACKGROUND: Stillbirths

Stillbirth by Race/Ethnicity – 3 Year Rolling Average 1995–2011 (est)
City of Milwaukee Health Department

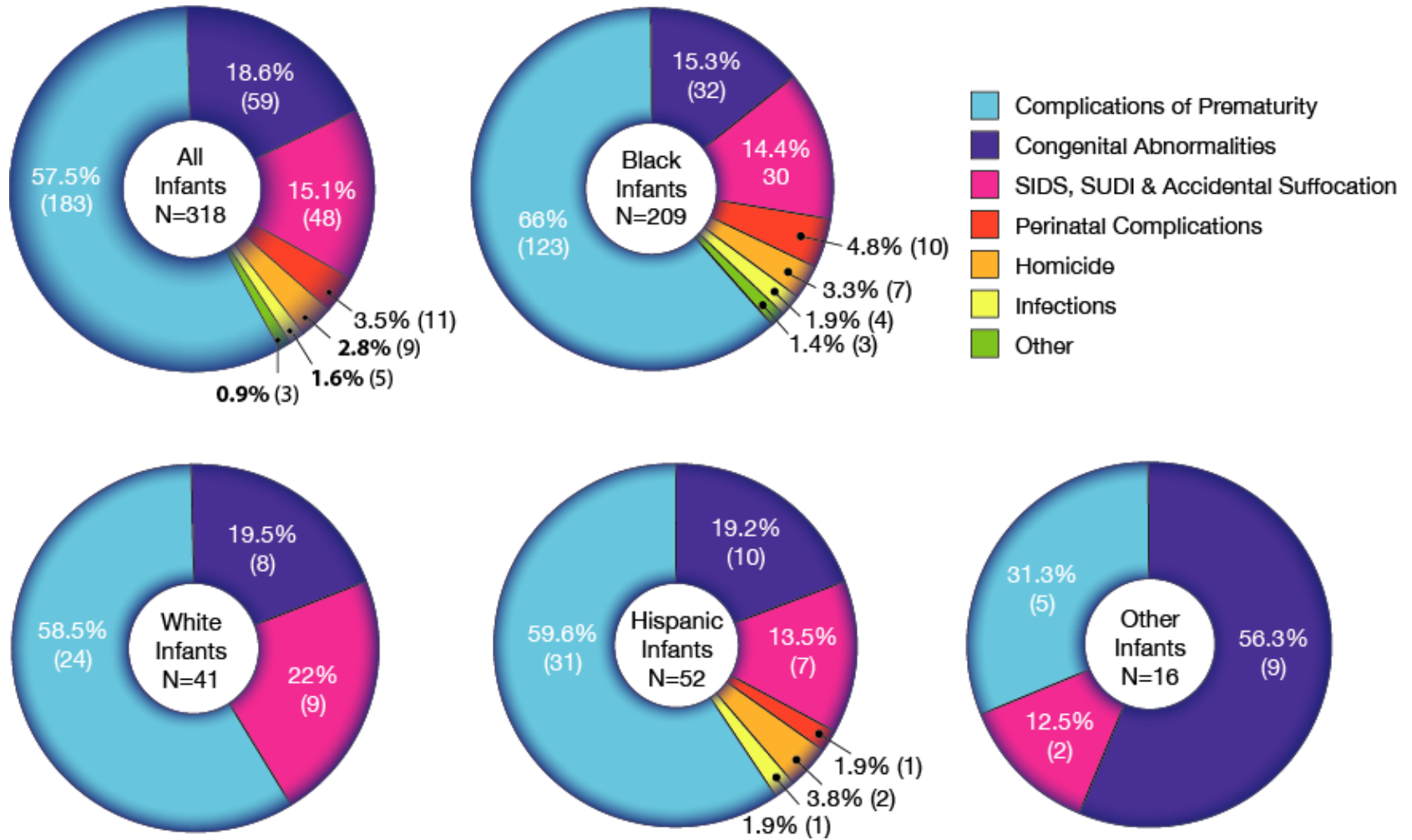


Stillbirth Risk Factors

Known Stillbirths Associated with Specific Risk Factors



2009-2011 Infant Causes of Death



Partnering for Solutions

Policy Makers

How should federal, state and local governments, and corporate entities help public health, providers and agencies to reduce disparity and increase infant survival?

Community Agencies

How can social service providers and other community agencies address the social determinants of healthy birth outcomes?

Health Plans Clinics/Provider Groups Private Practices

How can healthcare providers and health insurers apply Standards of Care and the concepts of Social Justice to reduce disparity and increase infant survival?

Individuals

What actions can individuals and families take to reduce disparity and increase infant survival?

Partnering for Solutions

Milwaukee Businesses and Community Groups

How can the community be informed? How can the community act to reduce disparity and increase infant survival?

Recommendations

1. Improve women's health and quality of care across the lifespan
2. Improve comprehensive reproductive health services for all genders of reproductive age
3. Promote, educate, and support safe sleep
4. Support and promote men's health and fatherhood issues across the lifespan
5. Understand and work to eliminate racism and improve the social, economic, educational, and environmental determinants of health



Tom Barrett, Mayor

Bevan K. Baker,
Commissioner of Health

www.milwaukee.gov/health

Jessica Gathirimu, MPH, CPH
Interim Director, Family and Community
Health

Geoffrey Swain, MD
Medical Director and Chief Medical
Officer

Emmanuel Ngui, PhD
FIMR Principal Investigator
University of Wisconsin-Milwaukee
Zilber School of Public Health

February 20, 2014