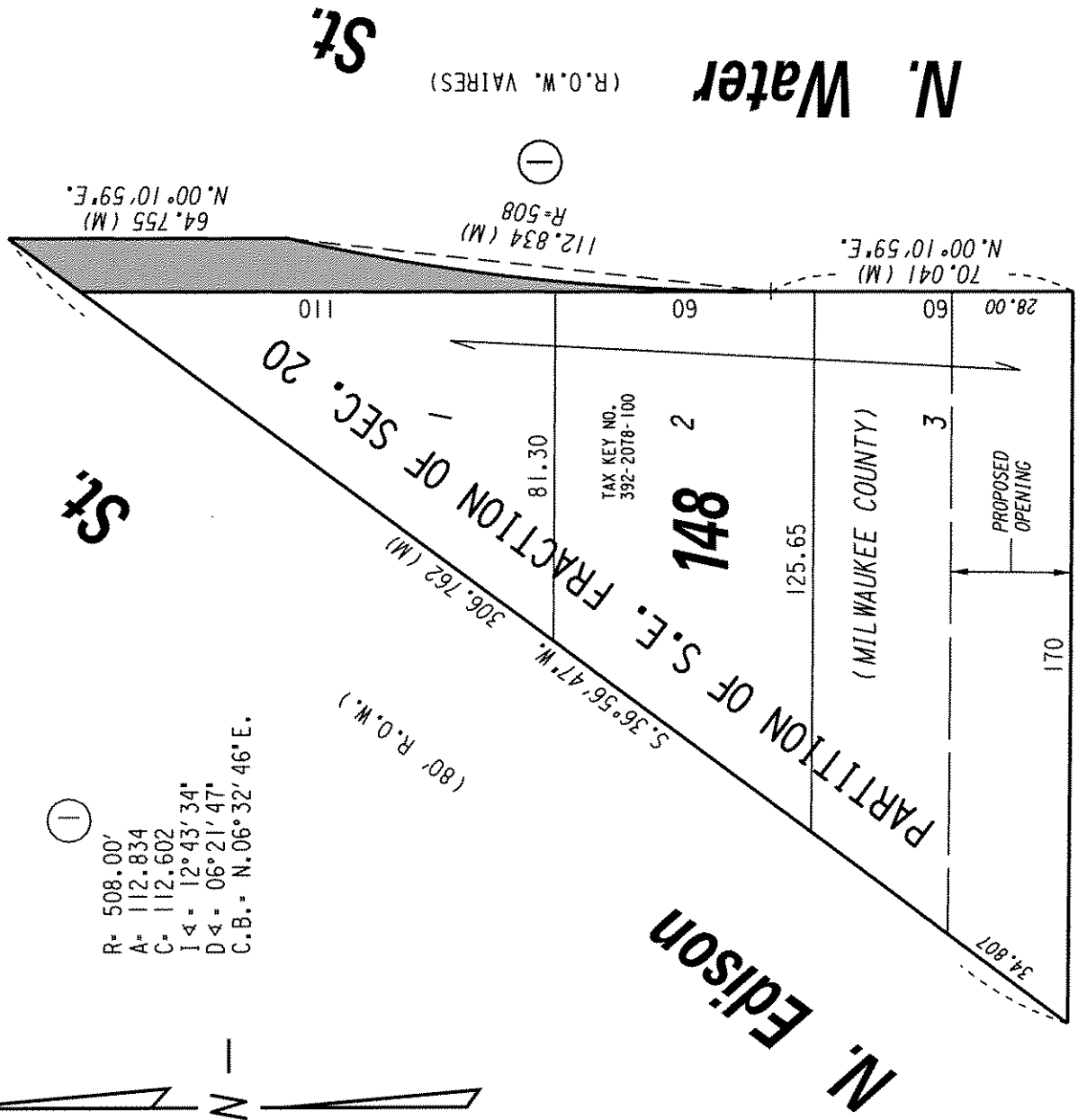


①

R= 508.00'
A= 112.834
C= 112.602
I 4= 12°43'34"
D 4= 06°21'47"
C.B.= N.06°32'46"E.



(R.O.W. VARIES)

E. Knapp St.

(M) - MEASURED DISTANCES IN CONJUNCTION WITH PROPOSED SUBDIVISION "PARK EAST ON THE EAST SIDE OF THE MILWAUKEE RIVER".

PORTION OF PUBLIC STREET PROPOSED TO BE VACATED

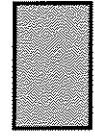


EXHIBIT "A"
FILE NO. 050241
INFRASTRUCTURE SERVICES DIVISION
MILWAUKEE, WISCONSIN

ASSIGNED TO: W.E. FUCHS
DRAWN BY: W.E.F.
PROJECT/GRANT NO.: WK52337211
APPROVED BY:

CH'K'D. BY: W.E. FUCHS
DATE: JULY 19, 2005
SCALE: 1" = 40'