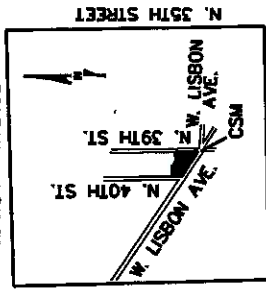


CERTIFIED SURVEY MAP NO.

A DIVISION OF PARCEL 3 OF CERTIFIED SURVEY MAP NO. 7966, LOTS 8, 9, 10, 11, 12, 13, 14, 15, 16, 17, AND 18 IN BLOCK 5 OF LISBON AVENUE PARK, AND THAT PART OF THE VACATED ALLEY, IN THE SOUTHWEST 1/4 AND THE SOUTHEAST 1/4 OF THE NORTHWEST 1/4 OF SECTION 24, TOWN 7 NORTH, RANGE 21 EAST, IN THE CITY OF MILWAUKEE, MILWAUKEE COUNTY, WISCONSIN.

VICINITY MAP
1" = 2000'
W. NORTH AVENUE
N. SHERMAN BLVD.



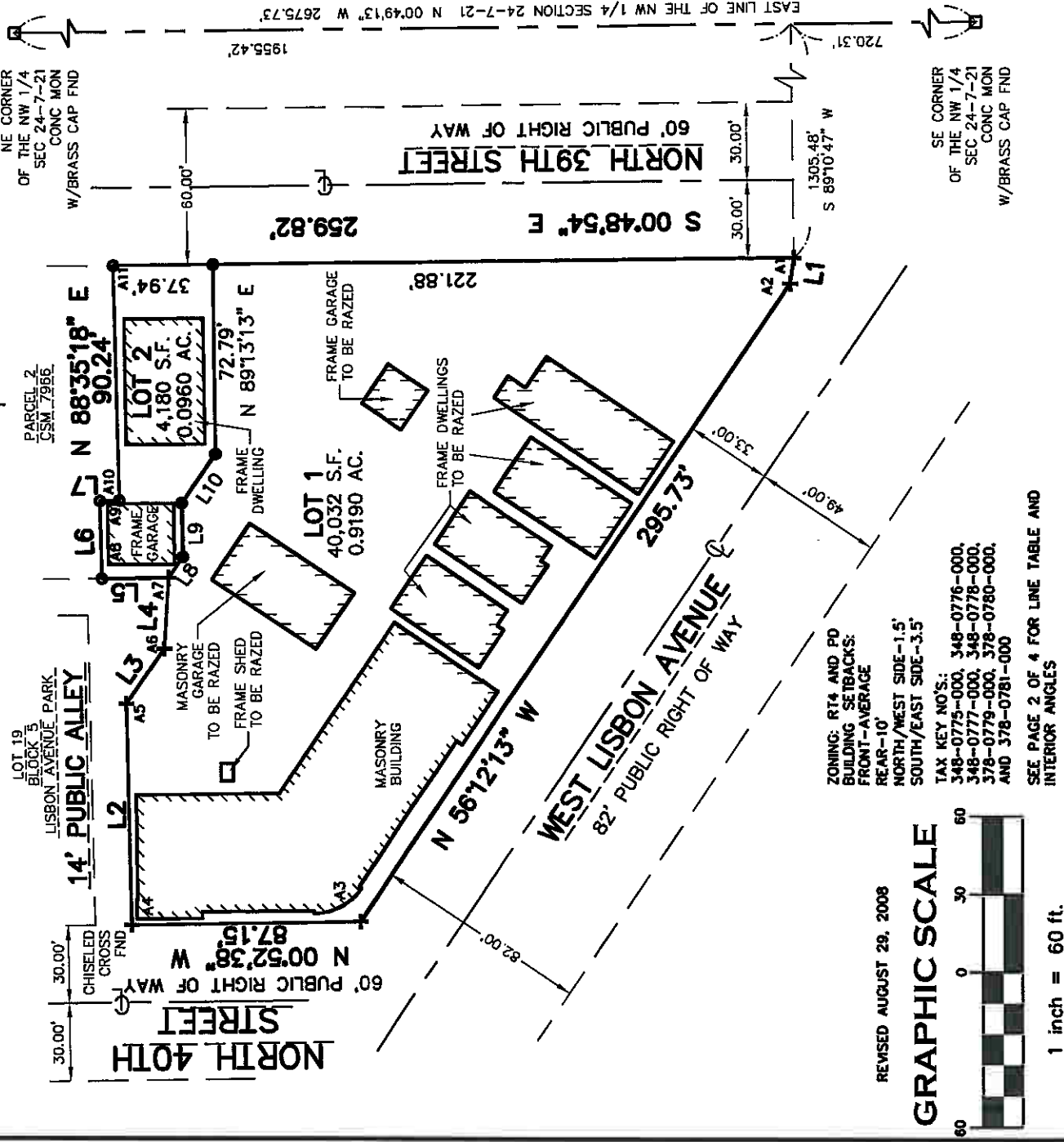
- + INDICATES A CHISELED CROSS SET, UNLESS OTHERWISE NOTED.
- INDICATES A CHISELED NOTCH SET ON THE FACE OF THE EXISTING BUILDING.
- o INDICATES 1" DIA IRON PIPE FOUND
- INDICATES 1 INCH DIA. IRON PIPE, 18 INCHES IN LENGTH, WEIGHING 1.68 LBS PER LINEAL FOOT, SET. ALL BEARINGS REFER TO THE EAST LINE OF THE NORTHWEST 1/4 OF SECTION 24, WHICH HAS A WISCONSIN STATE PLANE COORDINATE SYSTEM, (SOUTH ZONE), (NAD 27 JAN. 2005 REVISION) BEARING OF N 00°49'13" W.



CAPITOL SURVEY & ENGINEERING
20875 CROSSROADS CIRCLE, SUITE #950
WAUKESHA, WISCONSIN 53186
PH: (262) 439-4900
FAX: (262) 439-4810
WWW.CAPITOLSURVEY.COM

PREPARED FOR:
U.M.C.S. EXPANSION, LLC
2212 MARTIN LUTHER KING JR. DR.
MILWAUKEE, WI

NW 1/4
SECTION 24-7-21



REVISED AUGUST 29, 2008

GRAPHIC SCALE



1 inch = 60 ft.

ZONING: RT4 AND PD
BUILDING SETBACKS:
FRONT-AVERAGE
REAR-10'
NORTH/WEST SIDE-1.5'
SOUTH/EAST SIDE-3.5'
TAX KEY NO'S:
348-0775-000, 348-0776-000,
348-0777-000, 348-0778-000,
378-0779-000, 378-0780-000,
AND 378-0781-000
SEE PAGE 2 OF 4 FOR LINE TABLE AND INTERIOR ANGLES

CERTIFIED SURVEY MAP NO. _____

A DIVISION OF PARCEL 3 OF CERTIFIED SURVEY MAP NO. 7966, LOTS 8, 9, 10, 11, 12, 13, 14, 15, 16, 17, AND 18 IN BLOCK 5 OF LISBON AVENUE PARK, AND THAT PART OF THE VACATED ALLEY, IN THE SOUTHWEST 1/4 AND THE SOUTHEAST 1/4 OF THE NORTHWEST 1/4 OF SECTION 24, TOWN 7 NORTH, RANGE 21 EAST, IN THE CITY OF MILWAUKEE, MILWAUKEE COUNTY, WISCONSIN.

SURVEYOR'S CERTIFICATE

STATE OF WISCONSIN) SS
WAUKESHA COUNTY)

I, DAVID H. SPANJAR, A REGISTERED LAND SURVEYOR, HEREBY CERTIFY:

THAT I HAVE SURVEYED, DIVIDED AND MAPPED PARCEL 3 OF CERTIFIED SURVEY MAP NO. 7966, LOTS 8, 9, 10, 11, 12, 13, 14, 15, 16, 17, AND 18 IN BLOCK 5 OF LISBON AVENUE PARK, AND THAT PART OF THE VACATED ALLEY, IN THE SOUTHWEST 1/4 AND THE SOUTHEAST 1/4 OF THE NORTHWEST 1/4 OF SECTION 24, TOWN 7 NORTH, RANGE 21 EAST, IN THE CITY OF MILWAUKEE, MILWAUKEE COUNTY, WISCONSIN, BOUNDED AND DESCRIBED AS FOLLOWS:

COMMENCING AT THE NORTHEAST CORNER OF SAID 1/4 SECTION; THENCE S 00°49'13" E ALONG THE EAST LINE OF SAID 1/4 SECTION 1955.42 FEET; THENCE SOUTH 89°10'47" WEST 1305.48 FEET TO THE SOUTHEAST CORNER OF BLOCK 5 AND THE POINT OF BEGINNING OF LANDS TO BE DESCRIBED; THENCE N 82°19'36" W 10.04 FEET; THENCE N 56°12'13" W 295.73 FEET; THENCE N 00°52'38" W 87.15 FEET; THENCE N 88°42'04" E 85.10 FEET; THENCE S 55°42'40" E 25.68 FEET; THENCE S 86°37'35" E 27.25 FEET; THENCE N 00°50'17" W 25.39 FEET; THENCE N 88°35'18" E 29.83 FEET; THENCE S 01°24'42" E 7.39 FEET; THENCE N 88°35'18" E 90.24 FEET; THENCE S 00°48'54" E 259.82 FEET TO THE POINT OF BEGINNING.

LANDS CONTAINING 44,212 SQUARE FEET OR 1.0150 ACRES.

THAT I HAVE MADE SUCH SURVEY, LAND DIVISION AND MAP BY THE DIRECTION OF UNITED METHODIST CHILDREN'S SERVICES EXPANSION, LLC, OWNER OF SAID LAND.

THAT SUCH MAP IS A CORRECT REPRESENTATION OF ALL EXTERIOR BOUNDARIES OF THE LAND SURVEYED AND THE DIVISION THEREOF MADE.

THAT I HAVE FULLY COMPLIED WITH THE PROVISIONS OF CHAPTER 236.34 OF THE STATUTES OF THE STATE OF WISCONSIN AND CHAPTER 119 OF THE CITY OF MILWAUKEE CODE OF ORDINANCES IN SURVEYING, DIVIDING, AND MAPPING THE SAME.

DATED THIS 21ST DAY OF JULY, 2008.

DAVID H. SPANJAR
REGISTERED LAND SURVEYOR, S-2646
STATE OF WISCONSIN

LINE TABLE	
LINE	BEARING
L1	N82°19'36"W
L2	N88°42'04"E
L3	S55°42'40"E
L4	S86°37'35"E
L5	N00°50'17"W
L6	N88°35'18"E
L7	S01°24'42"E
L8	S55°42'40"E
L9	N88°42'04"E
L10	S55°42'40"E

INTERIOR ANGLE TABLE	
INT.A	ANGLE
A1	81°30'42"
A2	153°52'37"
A3	124°40'25"
A4	90°25'18"
A5	144°24'44"
A6	210°54'55"
A7	274°12'42"
A8	90°34'25"
A9	90°00'00"
A10	90°00'00"
A11	89°24'12"

CERTIFIED SURVEY MAP NO.

A DIVISION OF PARCEL 3 OF CERTIFIED SURVEY MAP NO. 7966, LOTS 8, 9, 10, 11, 12, 13, 14, 15, 16, 17, AND 18 IN BLOCK 5 OF LISBON AVENUE PARK, AND THAT PART OF THE VACATED ALLEY, IN THE SOUTHWEST 1/4 AND THE SOUTHEAST 1/4 OF THE NORTHWEST 1/4 OF SECTION 24, TOWN 7 NORTH, RANGE 21 EAST, IN THE CITY OF MILWAUKEE, MILWAUKEE COUNTY, WISCONSIN.

COMPANY OWNER'S CERTIFICATE

THE UNITED METHODIST CHILDREN'S SERVICES EXPANSION, LLC, A COMPANY DULY ORGANIZED AND EXISTING UNDER AND BY VIRTUE OF THE LAWS OF THE STATE OF WISCONSIN, AS OWNER, CERTIFIES THAT SAID CORPORATION CAUSED THE LAND DESCRIBED ON THIS MAP TO BE SURVEYED, DIVIDED, AND MAPPED AS REPRESENTED ON THIS MAP IN ACCORDANCE WITH THE REQUIREMENTS OF CHAPTER 119 OF THE MILWAUKEE CODE OF ORDINANCES.

IN CONSIDERATION OF THE APPROVAL OF THE MAP BY THE COMMON COUNCIL OF THE CITY OF MILWAUKEE AND IN ACCORDANCE WITH CHAPTER 119 OF THE MILWAUKEE CODE, THE UNDERSIGNED AGREES:

A. THAT ALL UTILITY LINES TO PROVIDE ELECTRIC POWER AND TELEPHONE SERVICES AND CABLE TELEVISION OR COMMUNICATIONS SYSTEMS LINES OR CABLES TO ALL LOTS IN THE CERTIFIED SURVEY MAP SHALL BE INSTALLED UNDERGROUND IN EASEMENTS PROVIDED THEREFOR, WHERE FEASIBLE.

THIS AGREEMENT SHALL BE BINDING ON THE UNDERSIGNED AND ASSIGNS.

IN WITNESS WHEREOF, UNITED METHODIST CHILDREN'S SERVICES EXPANSION, LLC, HAS CAUSED THESE PRESENTS TO BE SIGNED BY PERRY G. HUYCK, ITS EXECUTIVE DIRECTOR AT MILWAUKEE, WISCONSIN, THIS ____ DAY OF ____ 2008.

IN THE PRESENCE OF:

(WITNESS)

PERRY G. HUYCK, EXECUTIVE DIRECTOR

STATE OF WISCONSIN) SS
COUNTY)

PERSONALLY CAME BEFORE ME THIS ____ DAY OF ____, 20____, PERRY G. HUYCK, EXECUTIVE DIRECTOR OF THE ABOVE NAMED COMPANY, TO ME KNOWN TO BE THE PERSON WHO EXECUTED THE FOREGOING INSTRUMENT, AND ACKNOWLEDGED THE SAME.

NOTARY PUBLIC
STATE OF WISCONSIN
MY COMMISSION EXPIRES: _____

CONSENT OF CORPORATE MORTGAGE

PARTNERS FOR THE COMMON GOOD, A NONPROFIT ORGANIZATION DULY ORGANIZED AND EXISTING UNDER AND BY VIRTUE OF THE LAWS OF THE STATE OF WISCONSIN, AS MORTGAGEE OF THE DESCRIBED LAND, DOES HEREBY CONSENT TO THE CERTIFICATION OF UNITED METHODIST CHILDREN'S SERVICES EXPANSION, LLC, AS OWNER OF SAID LAND.

IN WITNESS WHEREOF, THE SAID PARTNERS FOR THE COMMON GOOD HAS CAUSED THESE PRESENTS TO BE SIGNED BY _____, AND ITS CORPORATE SEAL HEREUNTO AFFIXED,
THIS ____ DAY OF _____, 2008.

STATE OF WISCONSIN) SS
COUNTY) SS

REPRESENTATIVE

PERSONALLY CAME BEFORE ME THIS ____ DAY OF _____, 200____, _____, TO ME KNOWN TO BE THE PERSON WHO EXECUTED THE FOREGOING INSTRUMENT AND ACKNOWLEDGED THE SAME.

NOTARY PUBLIC
STATE OF WISCONSIN
MY COMMISSION EXPIRES: _____

CERTIFIED SURVEY MAP NO.

A DIVISION OF PARCEL 3 OF CERTIFIED SURVEY MAP NO. 7966, LOTS 8, 9, 10, 11, 12, 13, 14, 15, 16, 17, AND 18 IN BLOCK 5 OF LISBON AVENUE PARK, AND THAT PART OF THE VACATED ALLEY, IN THE SOUTHWEST 1/4 AND THE SOUTHEAST 1/4 OF THE NORTHWEST 1/4 OF SECTION 24, TOWN 7 NORTH, RANGE 21 EAST, IN THE CITY OF MILWAUKEE, MILWAUKEE COUNTY, WISCONSIN.

CERTIFICATE OF CITY TREASURER

STATE OF WISCONSIN) SS
MILWAUKEE COUNTY)

I, WAYNE F. WHITTOW, BEING THE DULY ELECTED, QUALIFIED AND ACTING CITY TREASURER OF THE CITY OF MILWAUKEE, CERTIFY THAT IN ACCORDANCE WITH THE RECORDS IN THE OFFICE OF THE CITY TREASURER OF THE CITY OF MILWAUKEE THERE ARE NO UNPAID TAXES OR UNPAID SPECIAL ASSESSMENTS ON THE LAND INCLUDED IN THIS CERTIFIED SURVEY MAP.

THIS _____ DAY OF _____, 2008.

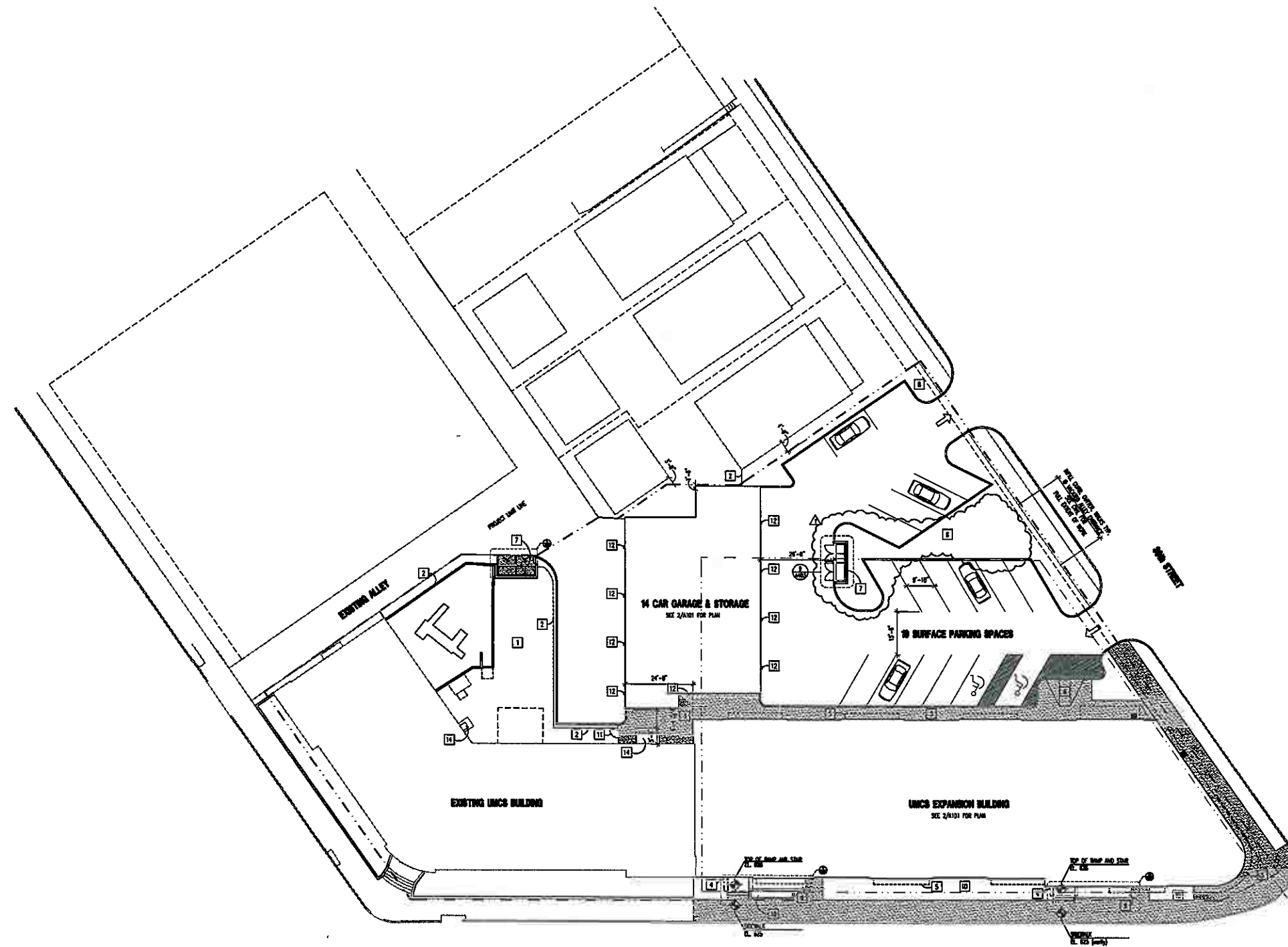
WAYNE F. WHITTOW, CITY TREASURER

COMMON COUNCIL CERTIFICATE OF APPROVAL

I CERTIFY THAT THIS CERTIFIED SURVEY MAP WAS APPROVED UNDER RESOLUTION NO. _____ ADOPTED BY THE COMMON COUNCIL OF THE CITY OF MILWAUKEE ON THIS _____ DAY OF _____, 2008.

RONALD D. LEONHARDT, CITY CLERK

TOM BARRETT, MAYOR



GENERAL NOTES:
 1) SEE CIVIL DRAWINGS FOR FULL EXTENT OF PAVING, SIDEWALK, AND CURBS AND RISES.

- KEYED NOTES:**
- 1) EXPANDED PLAY AREA
 - 2) RECONFIGURED EXISTING FENCE - REMOVE EXISTING FENCE TO MAXIMIZE EXPOSED POSSIBLE, ADD FENCE WHERE REQUIRED TO MATCH EXISTING
 - 3) SIDEWALK, COORDINATE WITH CIVIL
 - 4) CHIMNEY ABOVE
 - 5) PROVIDING DECK AT SECOND FLOOR
 - 6) ACCESSIBLE RAMP CURB, COORDINATE WITH CIVIL
 - 7) SPANCE ENCLOSURE
 - 8) WASTE PLAYING AREA WITH TREES, COORDINATE WITH LANDSCAPE
 - 9) ACCESSIBLE RAMP AT 1:20 SLOPE
 - 10) PLAYING AREA
 - 11) GATE IN FENCE, MATCH EXISTING FENCE
 - 12) SURFACE MOUNTED LIGHT
 - 13) NOT USED
 - 14) EXISTING AC UNIT, CONCRETE PAD, AND ENCLOSURE TO REMAIN



UMCS MAIN BUILDING EXPANSION

Milwaukee, WI
 Owner:
 United Methodist Children's Services
 2940 W. Linn
 Milwaukee, WI 53208
 Project No. 061688.02

Issued For:

No.	Description	Date
01	Issued For Bidding	08-08-08
02	Addendum #01	09-22-08

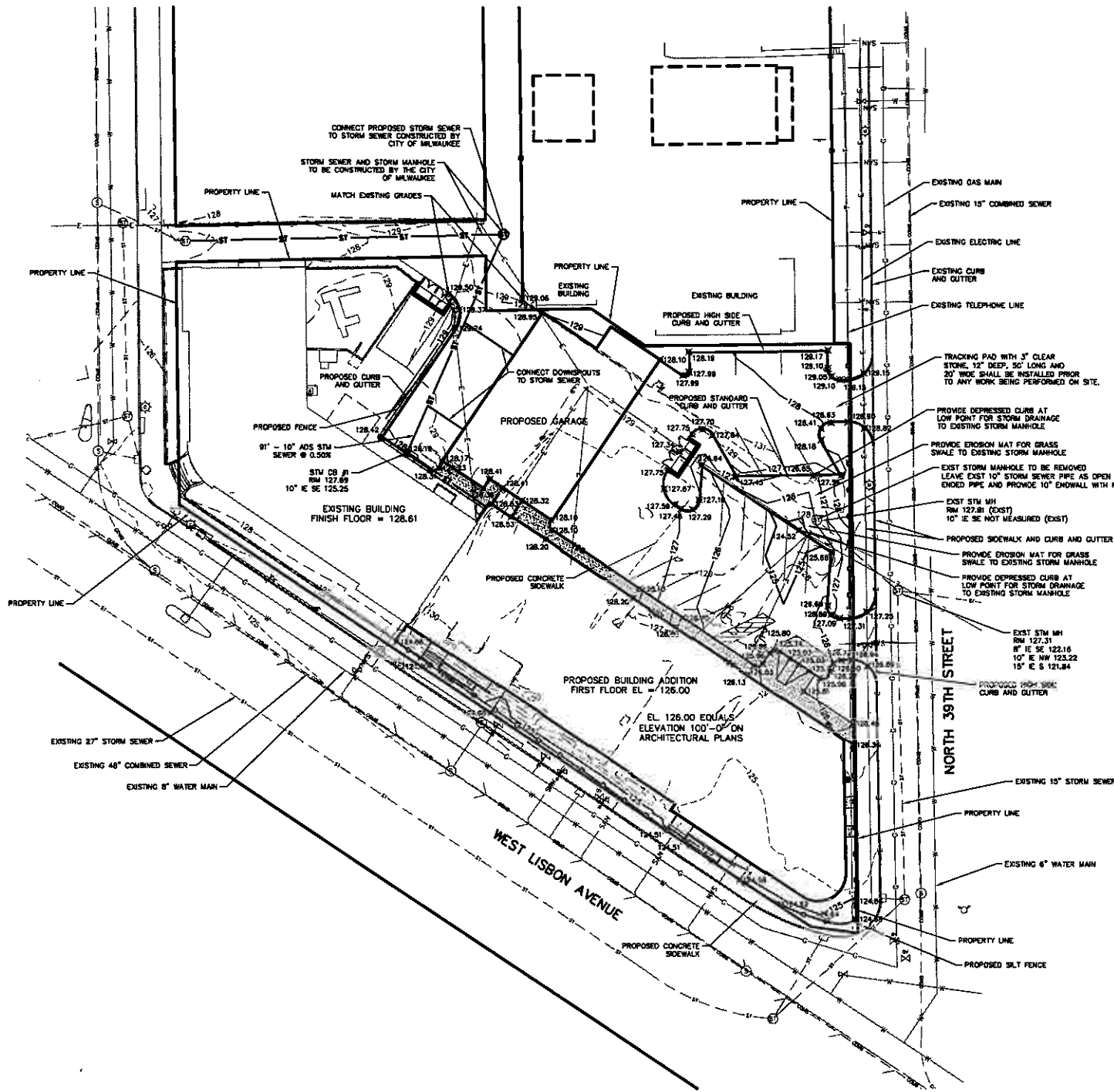
1 Site Plan
 SCALE: 1/16"=1'-0"



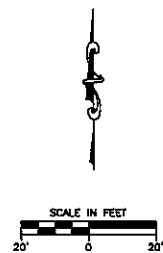
Drawn by: MEP
 Checked by:
 File: 1688_A002.dwg

SITE PLAN

A002



NOTES:
 1.) ALL GRADES ARE TO TOP OF CURB UNLESS OTHERWISE NOTED.



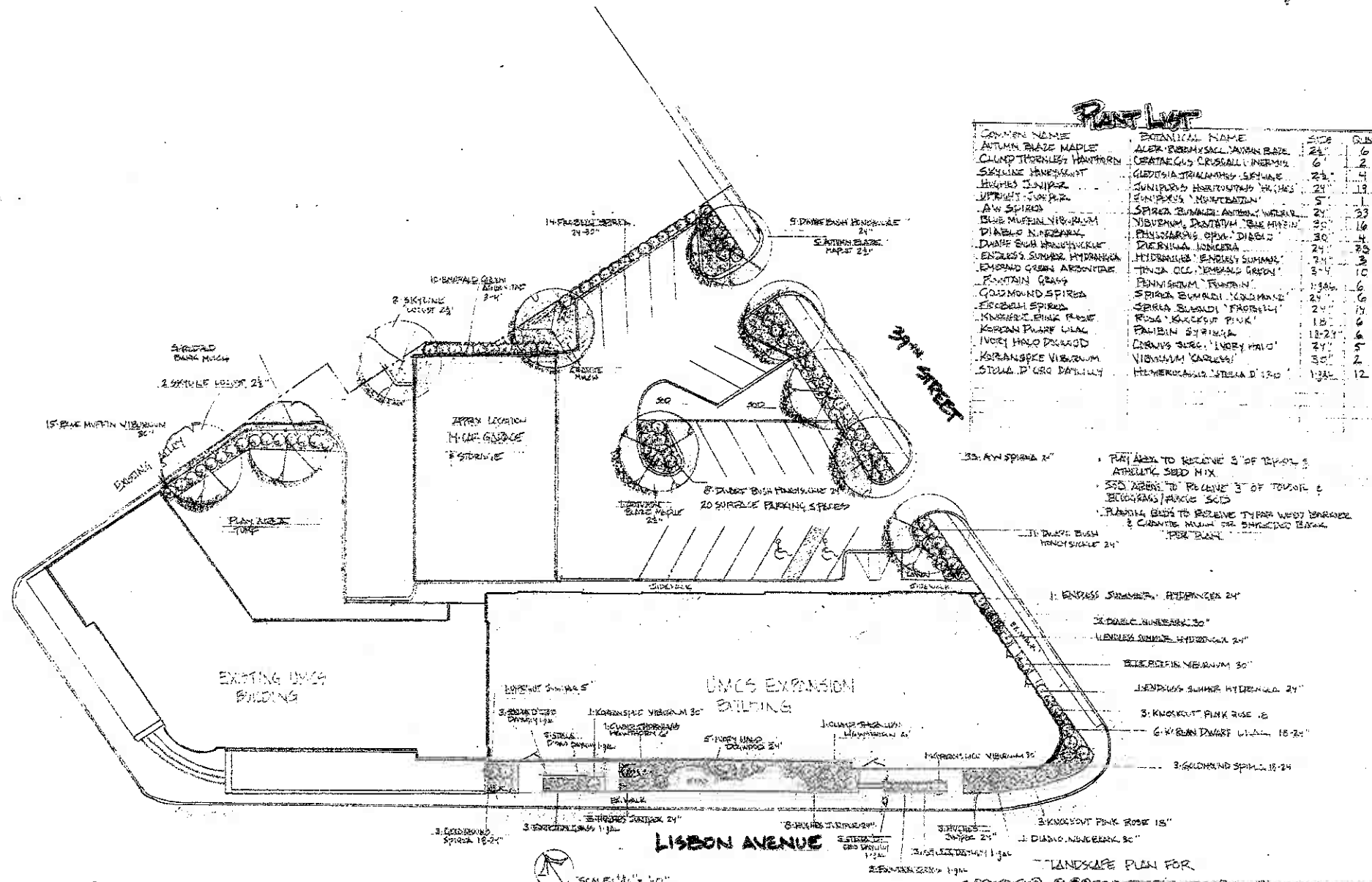
REVISION NO.	DESCRIPTION	DATE	BY	DESIGNED BY	DATE
1	ADDENDUM NO. 1	06/22/08	RCM	RCM	09/10/08
				RCM	09/10/08
				TSW	09/10/08

GRADING, DRAINAGE AND EROSION CONTROL PLAN
 UNITED METHODIST CHILDREN'S SERVICES
 CITY OF MILWAUKEE, WI

THE INFORMATION SHOWN ON THIS DRAWING CONCERNING TYPE AND LOCATION OF UNDERGROUND UTILITIES IS NOT GUARANTEED TO BE ACCURATE OR ALL INCLUSIVE. THE CONTRACTOR IS RESPONSIBLE FOR MAKING HIS OWN DETERMINATIONS AS TO THE TYPE AND LOCATION OF UNDERGROUND UTILITIES AS MAY BE NECESSARY TO AVOID DAMAGE THERE TO.
 © 2005 Key Engineering Group Ltd.



KEY PROJECT NUMBER
 1709010
 PROJECT SCALE
 1" = 20'
 SHEET NUMBER
C-1



Plant List

COMMON NAME	BOTANICAL NAME	SIZE	QUANTITY
AUTUMN BLAZE MAPLE	ALEX. RUBRYSACCL. AUTUMN BLAZE	24"	6
CLUMP THORNLEST HAWTHORN	CRATAEGUS CRUGALLI UNIFORM	6"	2
SKYLINE JASMINE	GLORIOSA STRALANDED SKYLINE	24"	4
UPRIGHT JUNIPER	JUNIPERUS HORIZONTALIS UPRIGHT	24"	19
UPRIGHT JUNIPER	JUNIPERUS HORIZONTALIS	5"	1
AW SPIREA	SPirea RUMICIDA ANTONIA WILSON	24"	1
BLUE MUFFIN VIBURNUM	VIBURNUM PENTAPHYLLUM BLUE MUFFIN	24"	23
DIABLO NINEBARK	DIABLO NINEBARK	30"	16
DIABLO NINEBARK	DIABLO NINEBARK	24"	4
ENDLESS SUMMER HYDRANGEA	ENDLESS SUMMER HYDRANGEA	24"	3
EMERALD GREEN ARBONITE	TINIA OCCIDENTALIS EMERALD GREEN	3-4'	10
FOUNTAIN GRASS	Pennisetum Tenuifolium	1-1/2"	6
GOLDMOUND SPIREA	SPirea SUMMERS GOLDMOUND	24"	6
ESCHBACH SPIREA	SPirea SUMMERS ESCHBACH	24"	14
KNOX HOLE DWARF LILAC	ROSA KNOX HOLE DWARF	18-24"	6
KORANSAKE VIBURNUM	KORANSAKE VIBURNUM	24"	5
KORANSAKE VIBURNUM	KORANSAKE VIBURNUM	30"	2
STELLA D'ORO BARTILLA	HEMEROCALLIS STELLA D'ORO	1-1/2"	12

**UMCS MAIN BUILDING
EXPANSION**

Milwaukee, WI
Owner: United Methodist Children's Services
3940 W. Lisbon
Milwaukee, WI 53208
Project No: 061688.02

Issued For: Bidding
Date: 08-08-08

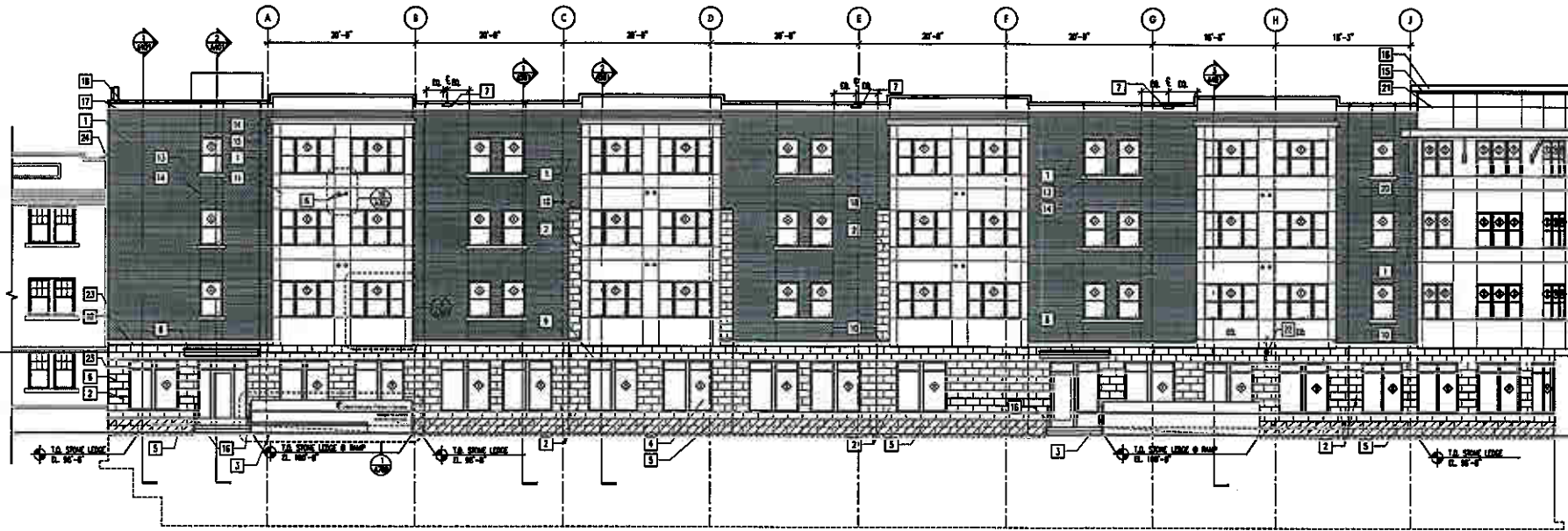
Heveland LANDSCAPE CO., INC.
823 OLEO ROAD • GRAFTON • WISCONSIN 53024
TEL: 262-578-1931 FAX: 262-578-9010 www.hevelandlandscape.com 8-25-08



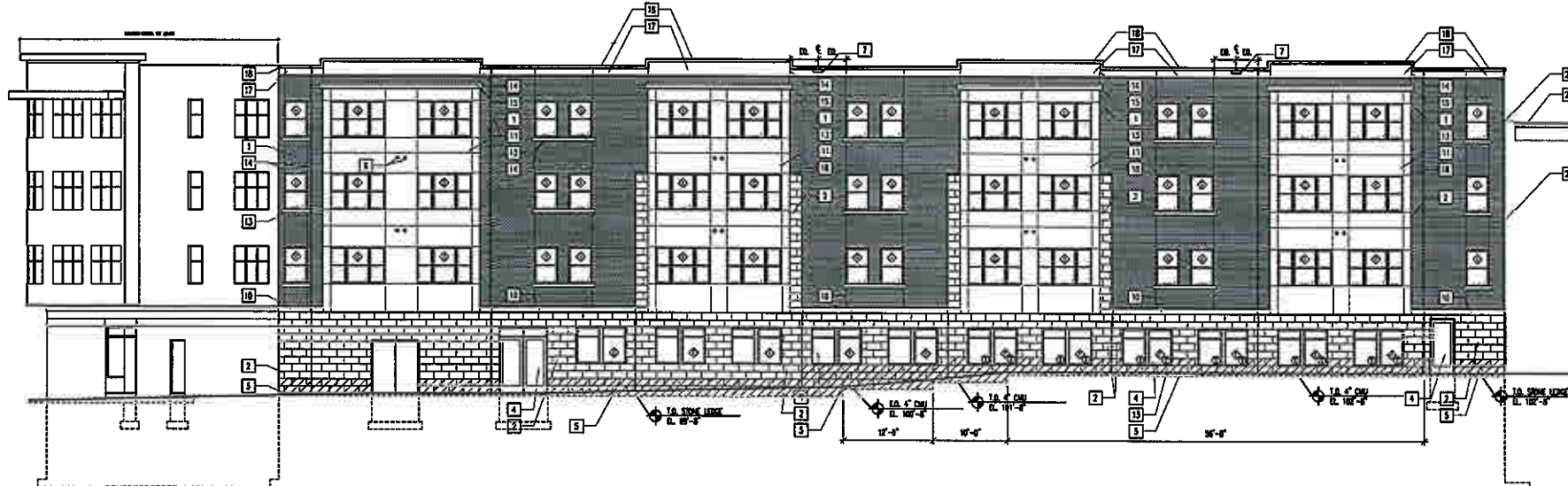
UMCS MAIN BUILDING EXPANSION
3940 WEST LISBON AVE.
MILWAUKEE, WISCONSIN

Drawn by: xxx
Checked by: xxx
File: 1688 LI.1.dwg

Landscape Plan



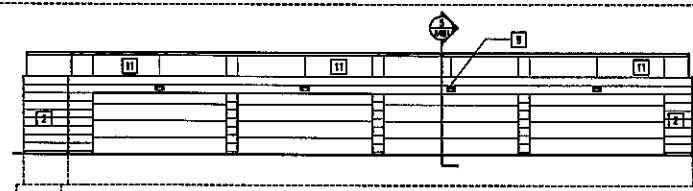
1 SOUTH ELEVATION (LISBON STREET)
SCALE: 1/8"=1'-0"



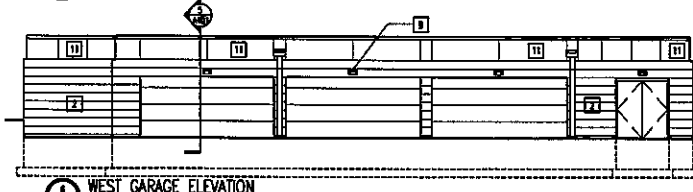
2 NORTH ELEVATION
SCALE: 1/8"=1'-0"



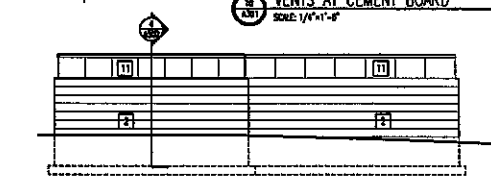
3 EAST ELEVATION (39th STREET)
SCALE: 1/8"=1'-0"



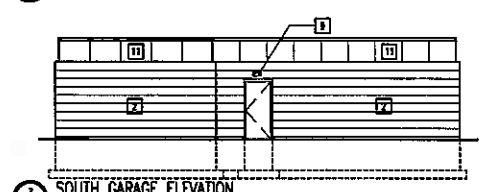
4 EAST GARAGE ELEVATION
SCALE: 1/8"=1'-0"



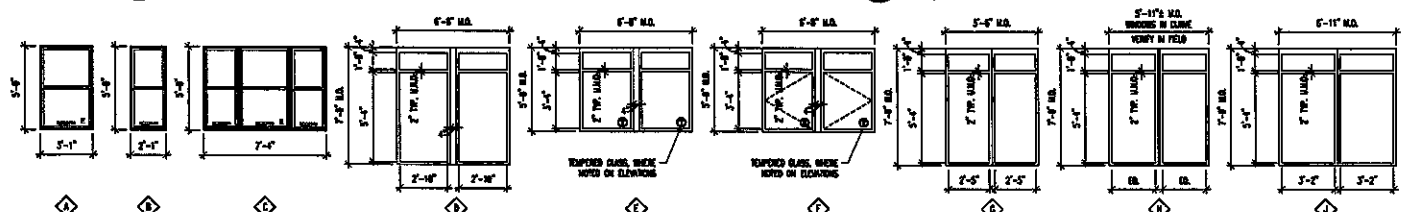
5 WEST GARAGE ELEVATION
SCALE: 1/8"=1'-0"



6 NORTH GARAGE ELEVATION
SCALE: 1/8"=1'-0"



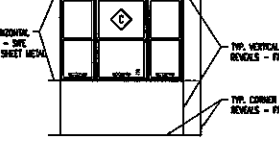
7 SOUTH GARAGE ELEVATION
SCALE: 1/8"=1'-0"



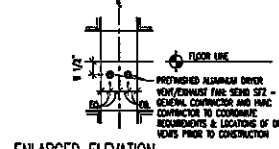
8 WINDOW TYPES
SCALE: 1/8"=1'-0"

GENERAL NOTES:
1) FINISHES SHOWN FOR BRICK AND MANUFACTURED STONE ARE USED TO ILLUSTRATE EXACT APPEARANCE, THEY ARE NOT INTENDED TO BECOME SIZES OF MATERIAL, AND JOINT LOCATIONS.
2) LOCATIONS AND APPEARANCES OF ALL VENTS, EXHAUSTS, PIPING, AND ALL SMALL PENETRATIONS OF THE EXTERIOR BUILDING SKIN MAY VARY AS NECESSARY TO BE COORDINATED BY THE CONTRACTOR AND VERIFIED WITH THE ARCHITECT PRIOR TO CONSTRUCTION.

KEYED NOTES:
1 BRICK - MODENA TO MATCH BRICK
2 MANUFACTURED STONE
3 RAMP AT 1:20
4 ALABAMA STONEFRONT
5 LIMESTONE (FIRST 2 COURSES ONLY, SEE NOTED AREAS)
6 PREFINISHED ALABAMA DRIVER VENT/CHAMFER FINL. SEND SIZE
7 1/2" x 1/2" PREFINISHED ALABAMA OUTLINE SCAFFER. ALUM. BRASS. SEE NOTED AREAS FOR MORE POINT OF VIEW.
8 CROPY
9 EXTERIOR LIGHT FIXTURE
10 MANUFACTURED STONE ACCENT BAND
11 TRICK CEMENT BOARD PANEL
12 NOT USED
13 LIMESTONE SILL
14 CONTROL JOINT
15 PREFINISHED ALABAMA FINL.
16 PREFINISHED BRICKS
17 MANUFACTURED STONE ACCENT BAND
18 PREFINISHED ALABAMA COPING
19 STONE SILL
20 SEE SIGNAGE AND BRACKETS, REFER TO DETAILS ON ASH
21 SPACED SYSTEM
22 FIREPLACE VENT
23 2" VERTICAL EXPANSION JOINT COVER (2 1/2" GROUP MODEL, SEE NOTED AREAS FOR MORE POINT OF VIEW). VERTICAL EXPANSION JOINT COVER (2 1/2" GROUP MODEL, SEE NOTED AREAS FOR MORE POINT OF VIEW).
24 1" ALUM. FINL. VERTICAL EXPANSION JOINT COVER (2 1/2" GROUP MODEL, SEE NOTED AREAS FOR MORE POINT OF VIEW).
25 2" ALUM. FINL. VERTICAL EXPANSION JOINT COVER (2 1/2" GROUP MODEL, SEE NOTED AREAS FOR MORE POINT OF VIEW).
26 2" ALUM. FINL. VERTICAL EXPANSION JOINT COVER (2 1/2" GROUP MODEL, SEE NOTED AREAS FOR MORE POINT OF VIEW).
27 2" ALUM. FINL. VERTICAL EXPANSION JOINT COVER (2 1/2" GROUP MODEL, SEE NOTED AREAS FOR MORE POINT OF VIEW).
28 2" ALUM. FINL. VERTICAL EXPANSION JOINT COVER (2 1/2" GROUP MODEL, SEE NOTED AREAS FOR MORE POINT OF VIEW).
29 2" ALUM. FINL. VERTICAL EXPANSION JOINT COVER (2 1/2" GROUP MODEL, SEE NOTED AREAS FOR MORE POINT OF VIEW).
30 2" ALUM. FINL. VERTICAL EXPANSION JOINT COVER (2 1/2" GROUP MODEL, SEE NOTED AREAS FOR MORE POINT OF VIEW).
31 2" ALUM. FINL. VERTICAL EXPANSION JOINT COVER (2 1/2" GROUP MODEL, SEE NOTED AREAS FOR MORE POINT OF VIEW).
32 2" ALUM. FINL. VERTICAL EXPANSION JOINT COVER (2 1/2" GROUP MODEL, SEE NOTED AREAS FOR MORE POINT OF VIEW).
33 2" ALUM. FINL. VERTICAL EXPANSION JOINT COVER (2 1/2" GROUP MODEL, SEE NOTED AREAS FOR MORE POINT OF VIEW).
34 2" ALUM. FINL. VERTICAL EXPANSION JOINT COVER (2 1/2" GROUP MODEL, SEE NOTED AREAS FOR MORE POINT OF VIEW).
35 2" ALUM. FINL. VERTICAL EXPANSION JOINT COVER (2 1/2" GROUP MODEL, SEE NOTED AREAS FOR MORE POINT OF VIEW).
36 2" ALUM. FINL. VERTICAL EXPANSION JOINT COVER (2 1/2" GROUP MODEL, SEE NOTED AREAS FOR MORE POINT OF VIEW).
37 2" ALUM. FINL. VERTICAL EXPANSION JOINT COVER (2 1/2" GROUP MODEL, SEE NOTED AREAS FOR MORE POINT OF VIEW).
38 2" ALUM. FINL. VERTICAL EXPANSION JOINT COVER (2 1/2" GROUP MODEL, SEE NOTED AREAS FOR MORE POINT OF VIEW).
39 2" ALUM. FINL. VERTICAL EXPANSION JOINT COVER (2 1/2" GROUP MODEL, SEE NOTED AREAS FOR MORE POINT OF VIEW).
40 2" ALUM. FINL. VERTICAL EXPANSION JOINT COVER (2 1/2" GROUP MODEL, SEE NOTED AREAS FOR MORE POINT OF VIEW).
41 2" ALUM. FINL. VERTICAL EXPANSION JOINT COVER (2 1/2" GROUP MODEL, SEE NOTED AREAS FOR MORE POINT OF VIEW).
42 2" ALUM. FINL. VERTICAL EXPANSION JOINT COVER (2 1/2" GROUP MODEL, SEE NOTED AREAS FOR MORE POINT OF VIEW).
43 2" ALUM. FINL. VERTICAL EXPANSION JOINT COVER (2 1/2" GROUP MODEL, SEE NOTED AREAS FOR MORE POINT OF VIEW).
44 2" ALUM. FINL. VERTICAL EXPANSION JOINT COVER (2 1/2" GROUP MODEL, SEE NOTED AREAS FOR MORE POINT OF VIEW).
45 2" ALUM. FINL. VERTICAL EXPANSION JOINT COVER (2 1/2" GROUP MODEL, SEE NOTED AREAS FOR MORE POINT OF VIEW).
46 2" ALUM. FINL. VERTICAL EXPANSION JOINT COVER (2 1/2" GROUP MODEL, SEE NOTED AREAS FOR MORE POINT OF VIEW).
47 2" ALUM. FINL. VERTICAL EXPANSION JOINT COVER (2 1/2" GROUP MODEL, SEE NOTED AREAS FOR MORE POINT OF VIEW).
48 2" ALUM. FINL. VERTICAL EXPANSION JOINT COVER (2 1/2" GROUP MODEL, SEE NOTED AREAS FOR MORE POINT OF VIEW).
49 2" ALUM. FINL. VERTICAL EXPANSION JOINT COVER (2 1/2" GROUP MODEL, SEE NOTED AREAS FOR MORE POINT OF VIEW).
50 2" ALUM. FINL. VERTICAL EXPANSION JOINT COVER (2 1/2" GROUP MODEL, SEE NOTED AREAS FOR MORE POINT OF VIEW).
51 2" ALUM. FINL. VERTICAL EXPANSION JOINT COVER (2 1/2" GROUP MODEL, SEE NOTED AREAS FOR MORE POINT OF VIEW).
52 2" ALUM. FINL. VERTICAL EXPANSION JOINT COVER (2 1/2" GROUP MODEL, SEE NOTED AREAS FOR MORE POINT OF VIEW).
53 2" ALUM. FINL. VERTICAL EXPANSION JOINT COVER (2 1/2" GROUP MODEL, SEE NOTED AREAS FOR MORE POINT OF VIEW).
54 2" ALUM. FINL. VERTICAL EXPANSION JOINT COVER (2 1/2" GROUP MODEL, SEE NOTED AREAS FOR MORE POINT OF VIEW).
55 2" ALUM. FINL. VERTICAL EXPANSION JOINT COVER (2 1/2" GROUP MODEL, SEE NOTED AREAS FOR MORE POINT OF VIEW).
56 2" ALUM. FINL. VERTICAL EXPANSION JOINT COVER (2 1/2" GROUP MODEL, SEE NOTED AREAS FOR MORE POINT OF VIEW).
57 2" ALUM. FINL. VERTICAL EXPANSION JOINT COVER (2 1/2" GROUP MODEL, SEE NOTED AREAS FOR MORE POINT OF VIEW).
58 2" ALUM. FINL. VERTICAL EXPANSION JOINT COVER (2 1/2" GROUP MODEL, SEE NOTED AREAS FOR MORE POINT OF VIEW).
59 2" ALUM. FINL. VERTICAL EXPANSION JOINT COVER (2 1/2" GROUP MODEL, SEE NOTED AREAS FOR MORE POINT OF VIEW).
60 2" ALUM. FINL. VERTICAL EXPANSION JOINT COVER (2 1/2" GROUP MODEL, SEE NOTED AREAS FOR MORE POINT OF VIEW).
61 2" ALUM. FINL. VERTICAL EXPANSION JOINT COVER (2 1/2" GROUP MODEL, SEE NOTED AREAS FOR MORE POINT OF VIEW).
62 2" ALUM. FINL. VERTICAL EXPANSION JOINT COVER (2 1/2" GROUP MODEL, SEE NOTED AREAS FOR MORE POINT OF VIEW).
63 2" ALUM. FINL. VERTICAL EXPANSION JOINT COVER (2 1/2" GROUP MODEL, SEE NOTED AREAS FOR MORE POINT OF VIEW).
64 2" ALUM. FINL. VERTICAL EXPANSION JOINT COVER (2 1/2" GROUP MODEL, SEE NOTED AREAS FOR MORE POINT OF VIEW).
65 2" ALUM. FINL. VERTICAL EXPANSION JOINT COVER (2 1/2" GROUP MODEL, SEE NOTED AREAS FOR MORE POINT OF VIEW).
66 2" ALUM. FINL. VERTICAL EXPANSION JOINT COVER (2 1/2" GROUP MODEL, SEE NOTED AREAS FOR MORE POINT OF VIEW).
67 2" ALUM. FINL. VERTICAL EXPANSION JOINT COVER (2 1/2" GROUP MODEL, SEE NOTED AREAS FOR MORE POINT OF VIEW).
68 2" ALUM. FINL. VERTICAL EXPANSION JOINT COVER (2 1/2" GROUP MODEL, SEE NOTED AREAS FOR MORE POINT OF VIEW).
69 2" ALUM. FINL. VERTICAL EXPANSION JOINT COVER (2 1/2" GROUP MODEL, SEE NOTED AREAS FOR MORE POINT OF VIEW).
70 2" ALUM. FINL. VERTICAL EXPANSION JOINT COVER (2 1/2" GROUP MODEL, SEE NOTED AREAS FOR MORE POINT OF VIEW).
71 2" ALUM. FINL. VERTICAL EXPANSION JOINT COVER (2 1/2" GROUP MODEL, SEE NOTED AREAS FOR MORE POINT OF VIEW).
72 2" ALUM. FINL. VERTICAL EXPANSION JOINT COVER (2 1/2" GROUP MODEL, SEE NOTED AREAS FOR MORE POINT OF VIEW).
73 2" ALUM. FINL. VERTICAL EXPANSION JOINT COVER (2 1/2" GROUP MODEL, SEE NOTED AREAS FOR MORE POINT OF VIEW).
74 2" ALUM. FINL. VERTICAL EXPANSION JOINT COVER (2 1/2" GROUP MODEL, SEE NOTED AREAS FOR MORE POINT OF VIEW).
75 2" ALUM. FINL. VERTICAL EXPANSION JOINT COVER (2 1/2" GROUP MODEL, SEE NOTED AREAS FOR MORE POINT OF VIEW).
76 2" ALUM. FINL. VERTICAL EXPANSION JOINT COVER (2 1/2" GROUP MODEL, SEE NOTED AREAS FOR MORE POINT OF VIEW).
77 2" ALUM. FINL. VERTICAL EXPANSION JOINT COVER (2 1/2" GROUP MODEL, SEE NOTED AREAS FOR MORE POINT OF VIEW).
78 2" ALUM. FINL. VERTICAL EXPANSION JOINT COVER (2 1/2" GROUP MODEL, SEE NOTED AREAS FOR MORE POINT OF VIEW).
79 2" ALUM. FINL. VERTICAL EXPANSION JOINT COVER (2 1/2" GROUP MODEL, SEE NOTED AREAS FOR MORE POINT OF VIEW).
80 2" ALUM. FINL. VERTICAL EXPANSION JOINT COVER (2 1/2" GROUP MODEL, SEE NOTED AREAS FOR MORE POINT OF VIEW).
81 2" ALUM. FINL. VERTICAL EXPANSION JOINT COVER (2 1/2" GROUP MODEL, SEE NOTED AREAS FOR MORE POINT OF VIEW).
82 2" ALUM. FINL. VERTICAL EXPANSION JOINT COVER (2 1/2" GROUP MODEL, SEE NOTED AREAS FOR MORE POINT OF VIEW).
83 2" ALUM. FINL. VERTICAL EXPANSION JOINT COVER (2 1/2" GROUP MODEL, SEE NOTED AREAS FOR MORE POINT OF VIEW).
84 2" ALUM. FINL. VERTICAL EXPANSION JOINT COVER (2 1/2" GROUP MODEL, SEE NOTED AREAS FOR MORE POINT OF VIEW).
85 2" ALUM. FINL. VERTICAL EXPANSION JOINT COVER (2 1/2" GROUP MODEL, SEE NOTED AREAS FOR MORE POINT OF VIEW).
86 2" ALUM. FINL. VERTICAL EXPANSION JOINT COVER (2 1/2" GROUP MODEL, SEE NOTED AREAS FOR MORE POINT OF VIEW).
87 2" ALUM. FINL. VERTICAL EXPANSION JOINT COVER (2 1/2" GROUP MODEL, SEE NOTED AREAS FOR MORE POINT OF VIEW).
88 2" ALUM. FINL. VERTICAL EXPANSION JOINT COVER (2 1/2" GROUP MODEL, SEE NOTED AREAS FOR MORE POINT OF VIEW).
89 2" ALUM. FINL. VERTICAL EXPANSION JOINT COVER (2 1/2" GROUP MODEL, SEE NOTED AREAS FOR MORE POINT OF VIEW).
90 2" ALUM. FINL. VERTICAL EXPANSION JOINT COVER (2 1/2" GROUP MODEL, SEE NOTED AREAS FOR MORE POINT OF VIEW).
91 2" ALUM. FINL. VERTICAL EXPANSION JOINT COVER (2 1/2" GROUP MODEL, SEE NOTED AREAS FOR MORE POINT OF VIEW).
92 2" ALUM. FINL. VERTICAL EXPANSION JOINT COVER (2 1/2" GROUP MODEL, SEE NOTED AREAS FOR MORE POINT OF VIEW).
93 2" ALUM. FINL. VERTICAL EXPANSION JOINT COVER (2 1/2" GROUP MODEL, SEE NOTED AREAS FOR MORE POINT OF VIEW).
94 2" ALUM. FINL. VERTICAL EXPANSION JOINT COVER (2 1/2" GROUP MODEL, SEE NOTED AREAS FOR MORE POINT OF VIEW).
95 2" ALUM. FINL. VERTICAL EXPANSION JOINT COVER (2 1/2" GROUP MODEL, SEE NOTED AREAS FOR MORE POINT OF VIEW).
96 2" ALUM. FINL. VERTICAL EXPANSION JOINT COVER (2 1/2" GROUP MODEL, SEE NOTED AREAS FOR MORE POINT OF VIEW).
97 2" ALUM. FINL. VERTICAL EXPANSION JOINT COVER (2 1/2" GROUP MODEL, SEE NOTED AREAS FOR MORE POINT OF VIEW).
98 2" ALUM. FINL. VERTICAL EXPANSION JOINT COVER (2 1/2" GROUP MODEL, SEE NOTED AREAS FOR MORE POINT OF VIEW).
99 2" ALUM. FINL. VERTICAL EXPANSION JOINT COVER (2 1/2" GROUP MODEL, SEE NOTED AREAS FOR MORE POINT OF VIEW).
100 2" ALUM. FINL. VERTICAL EXPANSION JOINT COVER (2 1/2" GROUP MODEL, SEE NOTED AREAS FOR MORE POINT OF VIEW).



ENLARGED ELEVATION - TYP. REVEALS AT CEMENT BOARD
SCALE: 1/4"=1'-0"



ENLARGED ELEVATION - VENTS AT CEMENT BOARD
SCALE: 1/4"=1'-0"

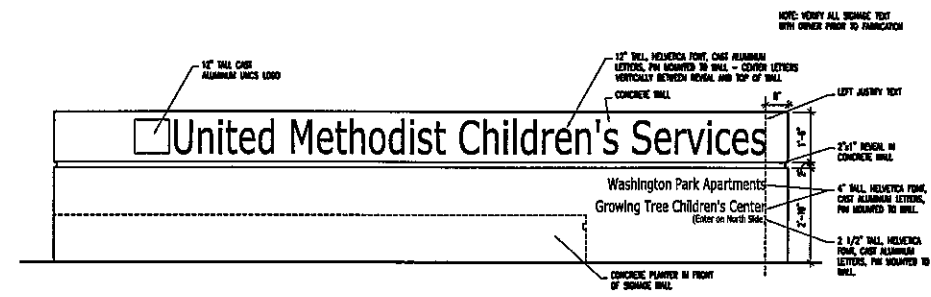
UMCS MAIN BUILDING EXPANSION

Milwaukee, WI
Owner: United Medical Children's Services
3740 W. Lisbon
Milwaukee, WI 53208
Project No: 061686.02

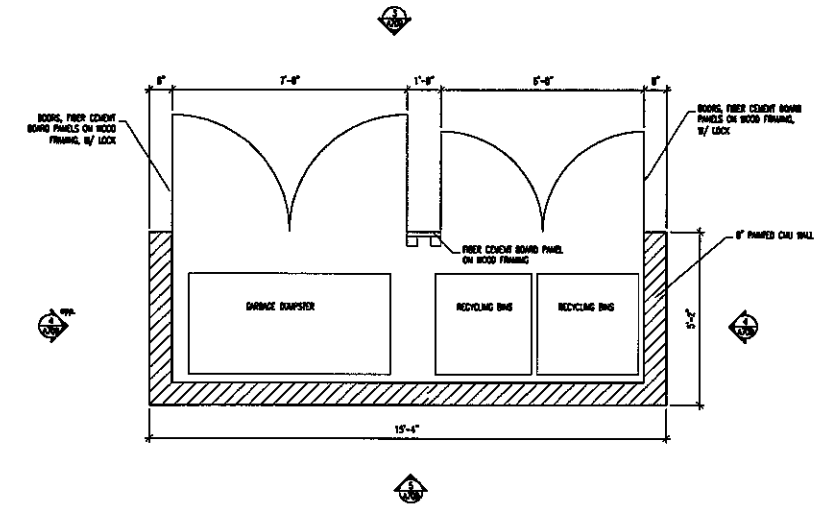
Issued For:
No. Description Date
01 Issued For Bidding 09-06-06

Drawn by: MEP
Checked by: xxx
File: 1688 A301.dwg

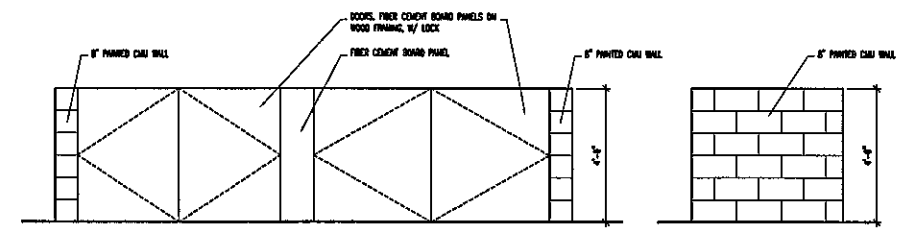
BUILDING ELEVATIONS



1 Exterior Entry Signage
SCALE: 1/2"=1'-0"

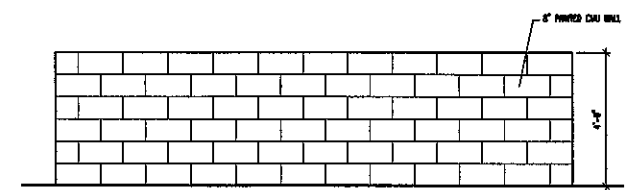


2 Garbage and Recycling Enclosure
SCALE: 1/2"=1'-0"



3 Garbage and Recycling - Front Elevation
SCALE: 1/2"=1'-0"

4 Garbage and Recycling - Side Elevation
SCALE: 1/2"=1'-0"



5 Garbage and Recycling - Rear Elevation
SCALE: 1/2"=1'-0"

UMCS MAIN BUILDING EXPANSION

Milwaukee, WI
 Owner
 United Methodist Children's Services
 3940 W. Lisbon
 Milwaukee, WI 53208
 Project No. 081688.02

Issued For:

No.	Description	Date
01	Issued For Bidding	08-08-08

Drawn by: xxx
 Checked by: xxx
 File: 1688 A709.dwg

Signage
 Site Details