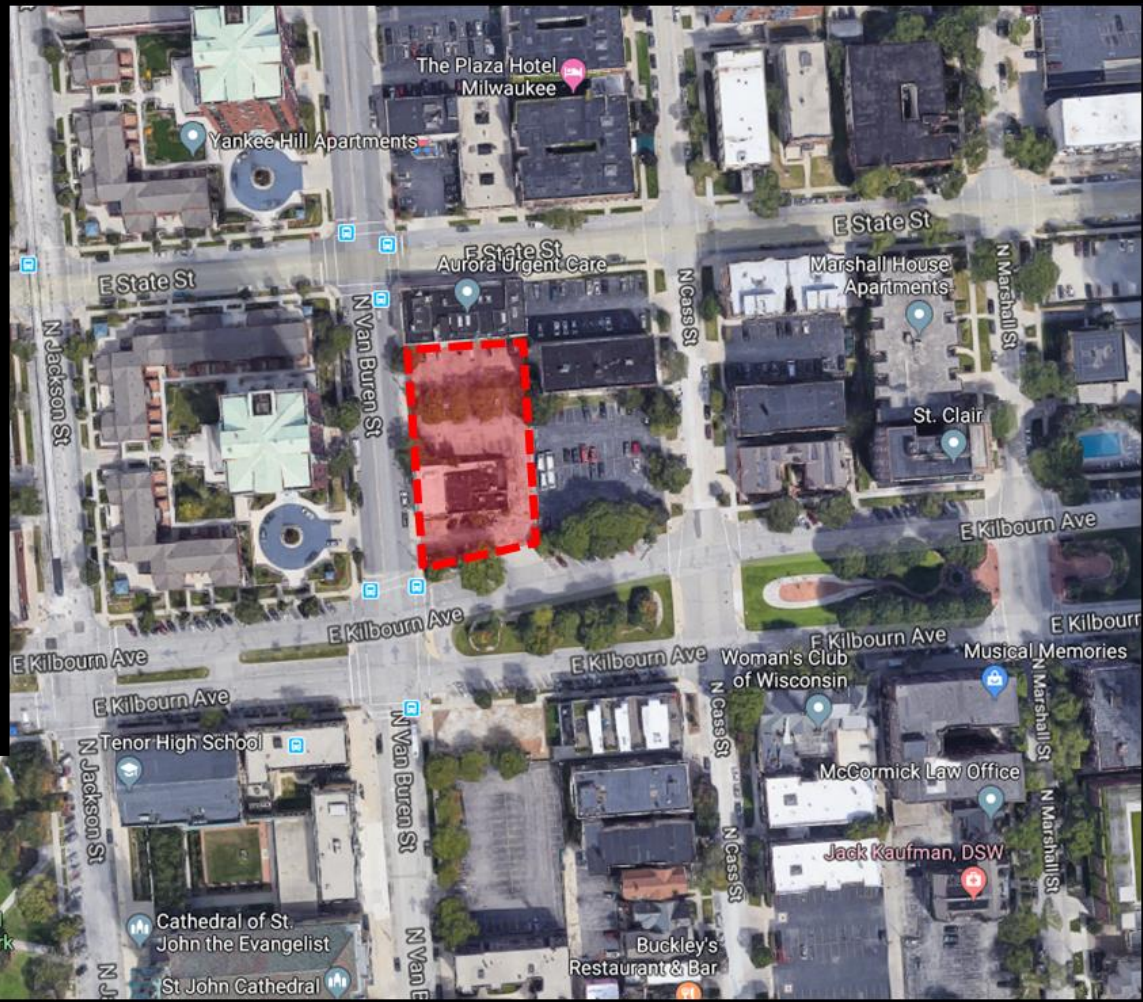
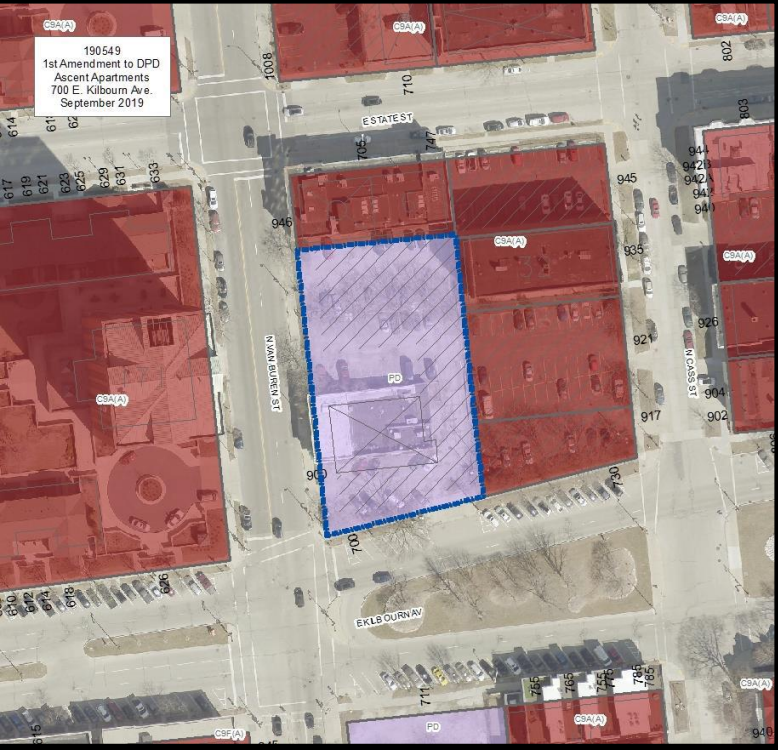


File No. 190549. A substitute ordinance relating to the First Amendment to the Detailed Planned Development known as Ascent Apartments to allow for additional dwelling units and structured parking, as well as an increase in building height and design changes to a previously approved mixed-use building on land located at 700 East Kilbourn Avenue, on the north side of East Kilbourn Avenue, East of North Van Buren Street, in the 4th Aldermanic District.

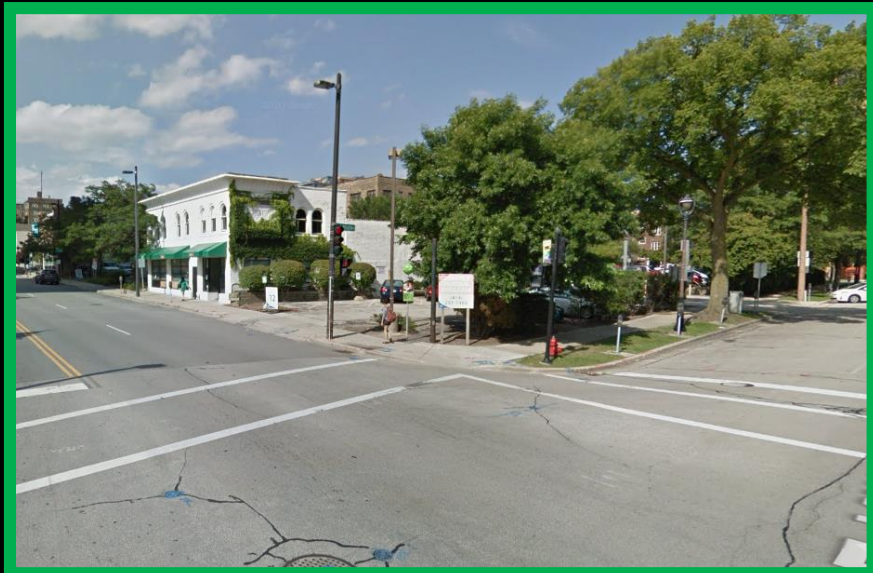
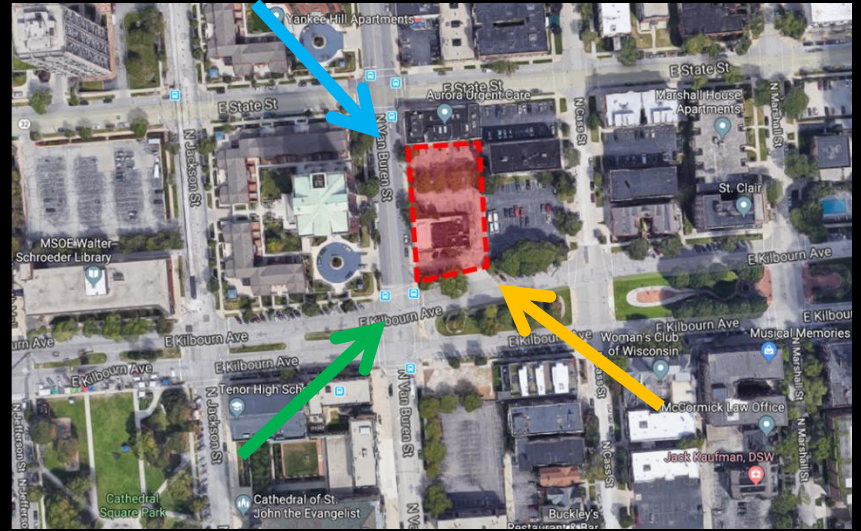




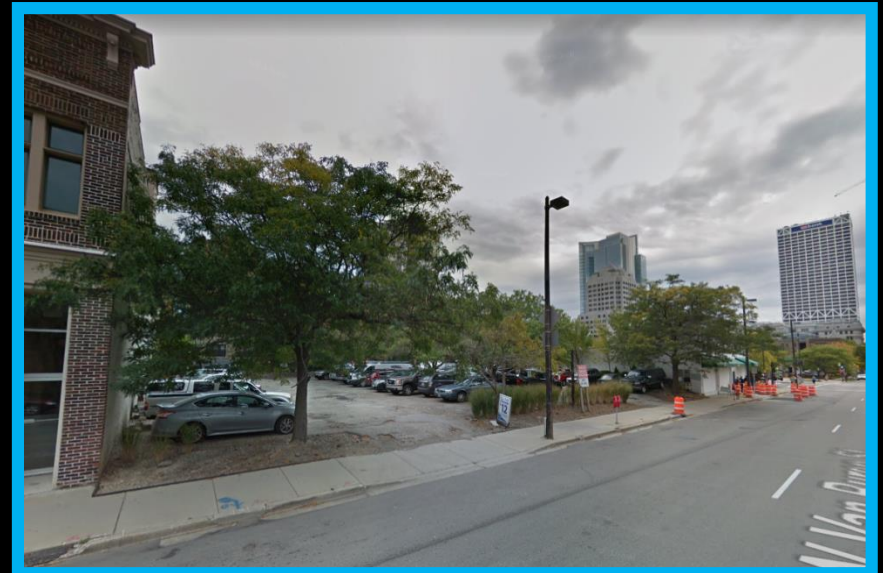
File No. 190549. Site Context Photos



View from East Kilbourn Avenue looking north-west



View from East Kilbourn & North Van Buren



View from North Van Buren Street looking south-east