

NOTES:

FIELD VERIFIED DIMENSIONS
TO BE VERIFIED PRIOR TO DEMOLITION

REPAIR SCOPE:

- REMOVE ALL EXISTING BRICK FROM SOUTH SIDE WALL
- REMOVE 1ST FLOOR STONE
- REMOVE INTERIOR FINISHES ON FIRST AND SECOND FLOOR
- SHORE RESTAURANT SIDE OF BUILDING
- REBUILD SECOND STORY WALL WITH WOOD FRAMING AND SHEATHING. INSTALL NEW WINDOWS
- 1ST FLOOR SCOPE TBD
- INSTALL POSTS AND FOOTINGS TO SUPPORT WALL. NO REINFORCEMENT REQUIRED ON SALON SIDE
- INSTALL NEW APPROVED BRCK USING THE APPROPRIATE NUMBER OF BRICK TIES
- INSTALL NEW INTERIOR FINISHES ON 1ST AND SECOND FLOOR
- WINDOWS IN SALON TO REMAIN

DESIGN LOADS:

FLOOR LOADING:

100/40 PSF LIVE LOAD
10 PSF DEAD LOAD

ROOF LOADING:

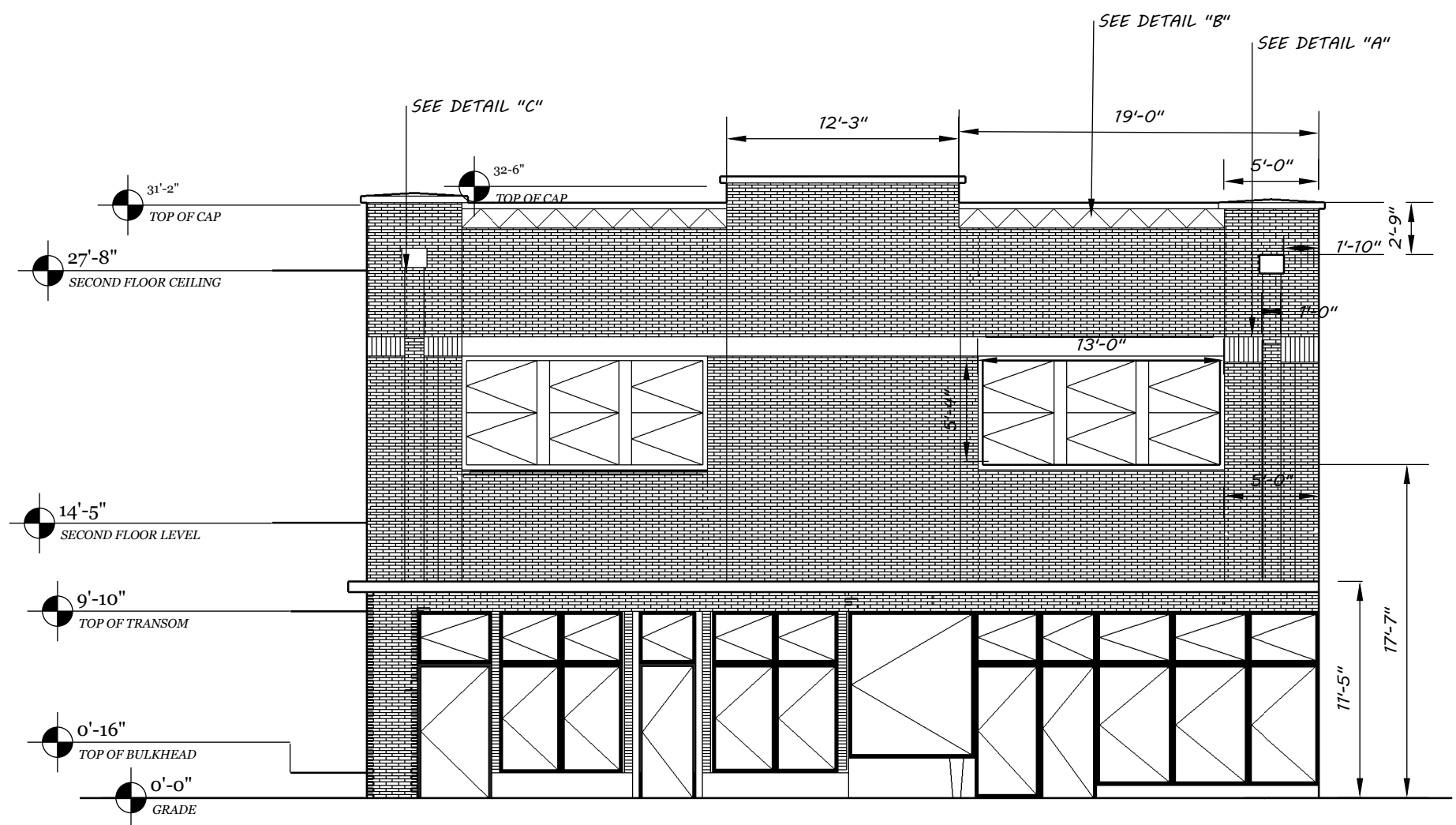
30 PSF LIVE LOAD
10 PSF DEAD LOAD

CONCRETE STRENGTH $F_c = 2500$ PSI

MINIMUM SOIL BEARING CONDITIONS: 2000 PSF

ALL LUMBER TO BE #2 OR BETTER UNLESS OTHERWISE SPECIFIED

DESIGN AND CONSTRUCTION METHODS TO FOLLOW THE INTERNATIONAL EXISTING BUILDING CODE, 2009 EDITION.



1 SOUTH FACADE
A5 1/4" = 1'-0"



Zerrecon, Inc.
 34206 Davies Dr.
 Oconomowoc, WI 53066
 Matthew Soiney, PE
 President
 414-771-7140
 Matt.Soiney@zerrecon.com
 www.zerrecon.com