



Certificate of Appropriateness

Milwaukee Historic Preservation Commission/200 E. Wells Street/Milwaukee, WI 53202/phone 414-286-5712/fax 414-286-3004

Property 133 W. PITTSBURGH AV. S. 2ND STREET HD
Description of work Awning sign and refacing of projecting sign per attached.
Sizes may be reduced by plan exam if necessary for zoning compliance.
Date issued 7/8/2022 PTS ID 115290 COA: 2 SIGNS

In accordance with the provisions of Section 320-21 (11) and (12) of the Milwaukee Code of Ordinances, the Milwaukee Historic Preservation Commission has issued a certificate of appropriateness for the work listed above. The work was found to be consistent with preservation guidelines. The following conditions apply to this certificate of appropriateness:

N/A

All work must be done in a craftsman-like manner, and must be completed within one year of the date this certificate was issued. Staff must approve any changes or additions to this certificate before work begins. Work that is not completed in accordance with this certificate may be subject to correction orders or citations. If you require technical assistance, please contact HPC@milwaukee.gov.

If permits are required, you are responsible for obtaining them from the Milwaukee Development Center. If you have questions about permit requirements, please consult the Development Center's web site, www.milwaukee.gov/build, or call (414) 286-8210.

City of Milwaukee Historic Preservation Staff

Copies to: Development Center, Ald. Jose Perez, Contractor , Inspector John Cunningham (286-2538)

[14894-03] FLOWERS FOR DREAMS-FS2 - Flag sign option 2:

(1) REQ'D

1/2" = 1' - 0" SCALE

MAT'LS & LABOR TO FAB/ INSTALL (2) NEW ROUTED ALUM FACES FOR EXISTING BLADE SIGN.

HEIGHT = 17'-11 5/8"

TOP = 3' - 1 - 7/8"

BOTTOM = 2'-2"

DEPTH = 1' - 0 1/2"

- THIS OPTION IS FOR ROUTED FACES BACKED WITH WHITE ACRYLIC W/ 1ST SURFACE VINYL GRAPHICS FOR LOGO.
- QUOTED AS HAVING TO CUT OUT EXISTING FACES FROM SIGN.
- MECHANICALLY FASTEN NEW FACES TO CABINET.
- FACE WILL BE IN (2) PIECES DUE TO SIZE.

NOTE: INSTALL WILL NEED TO GO TO SITE THE NIGHT BEFORE AND CONE-OFF SPACES TO PARK TRUCKS.



EXISTING N. ELEV. SIGN - NTS



PROPOSED N. ELEV. SIGN - NTS

COLOR SCHEDULE:

- MAP SATIN "DARK BRONZE" PAINTED FINISH
- 3M 3630-131 "SATIN GOLD" TRANSLUCENT VINYL FILM, (CLOSEST MATCH TO CMYK 35/54/74/16) APPROVAL REQ'D
- #7328 WHITE ACRYLIC

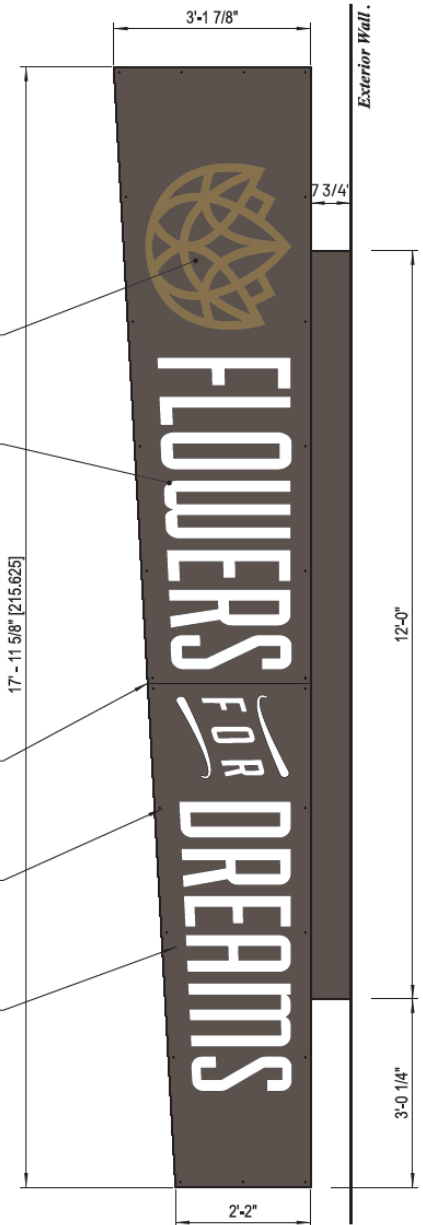
#7328 WHITE ACRYLIC W/ 1ST SURFACE APPLIED VINYL FILM PER COLOR SCHEDULE

.125" ROUTED ALUM FACES BACKED W/ #7328 WHITE ACRYLIC FASTENED AT STUD WELDS ON 2ND SURFACE OF FACES, TYP

SEAMLINE BETWEEN FACES, FABRICATED FLANGE TO AVOID LIGHT LEAKS

CTRSINK FACE SCREWS SECURE NEW FACES TO EXISTING 2" ALUM ANGLE AT CABINET PERIMETER, 1" OFFSET FROM EDGES, TYP

BACKING ACRYLIC TO KEEP DISTANCE OF 3" OR MORE FROM EDGES



① PROPOSED WEST ELEV FACE
1/2" = 1' - 0" SCALE

[14894-01] FLOWERS FOR DREAMS-AW1 - Awning Option 1(R2)

(1) REQ'D

1/2" = 1' - 0" SCALE

MATERIALS AND LABOR TO:

- REMOVE THE **CENTER** AWNING
- DISPOSE OF EXISTING AWNING FABRIC
- RE-SKIN CENTER AWNING WITH FABRIC MATCHING OLD AWNING AND AWNINGS TO LEFT AND RT.
- ADD CUSTOMER LOGO - PROVIDE STENCIL TO APPLY
- RE-INSTALL.

COLOR SCHEDULE:

- BLACK SUNBRELLA FABRIC
- STENCIL-PAINTED AWNING LOGO TO MATCH "PANTONE 872 C" - **APPROVAL REQ'D**
- STENCIL-PAINTED "WHITE" AWNING COPY

① AWNING TOP FACE W/ LOGO

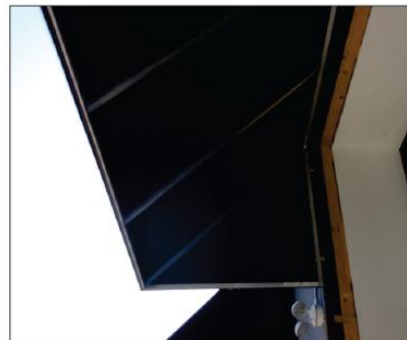
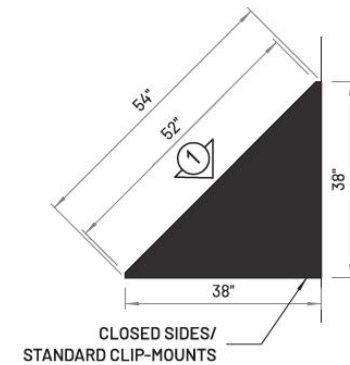
1/2" = 1' - 0" SCALE



BLACK SUNBRELLA AWNING FABRIC W/ LOGO AND COPY STENCIL-PAINTED PER COLOR SCHEDULE

② AWNING SIDE VIEW - SURVEY

1/2" = 1' - 0" SCALE



EXISTING AWNING FRAMEWORK & CLIPS

1



EXISTING NORTH ELEV. VIEW - NTS

2



PROPOSED NORTH ELEV. VIEW - NTS

4

5