



LIVING WITH HISTORY

Certificate of Appropriateness

Milwaukee Historic Preservation Commission/200 E. Wells Street/Milwaukee, WI 53202/phone 414-286-5712/fax 414-286-3004

Property 1203 N. 10TH ST. **Pabst Brewery Historic District**
Description of work Install projecting sign at corner of building. Letters, logo, etc., all will be type A. Flexible red LED tubing at outside perimeter of sign.
Date issued 4/12/2013 PTS ID 85587 COA, sign at corner

In accordance with the provisions of Section 320-21 (11) and (12) of the Milwaukee Code of Ordinances, the Milwaukee Historic Preservation Commission has issued a certificate of appropriateness for the work listed above. The work was found to be consistent with preservation guidelines. The following conditions apply to this certificate of appropriateness:

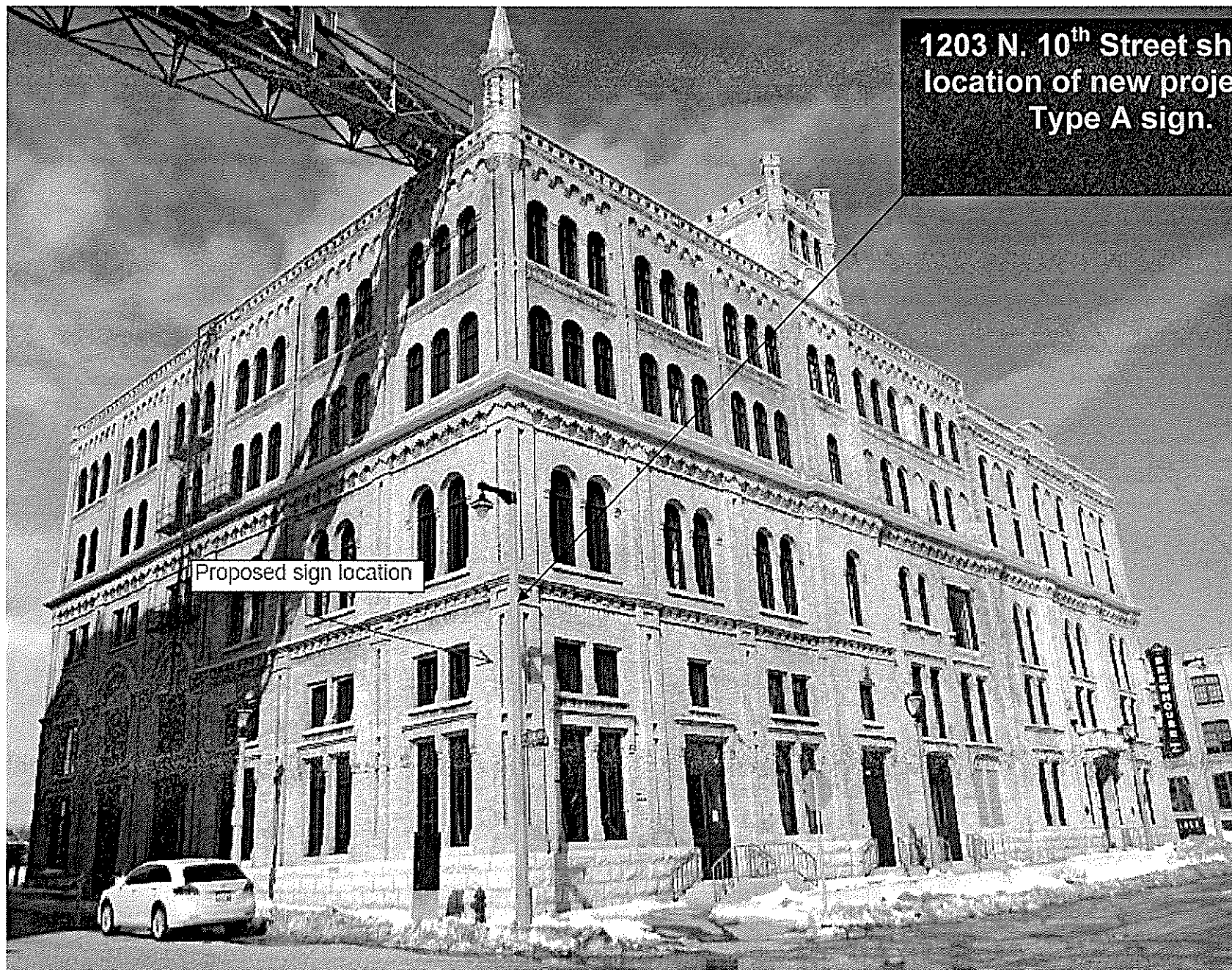
All work will be done according to attached drawings. Letters will be open channel illuminated with LED lamps. Lamps must be constant, no tracers. Logo, etc on sign will be made from a routed aluminum panel backed with acrylic, also a type A sign. Mounting of the sign will be in the masonry joints and not thought the face of the brick.

All work must be done in a craftsman-like manner, and must be completed within one year of the date this certificate was issued. Staff must approve any changes or additions to this certificate before work begins. Work that is not completed in accordance with this certificate may be subject to correction orders or citations. If you require technical assistance, please contact Paul Jakubovich of the Historic Preservation staff as follows: Phone: (414) 286-5712 Fax: (414) 286-3004 E-mail: pjakub@milwaukee.gov. If permits are required, you are responsible for obtaining them from the Milwaukee Development Center. If you have questions about permit requirements, please consult the Development Center's web site, www.milwaukee.gov/build, or call (414) 286-8210. **You must have a signed Certificate of Appropriateness in hand when applying for the permit.**

Paul Jakubovich
City of Milwaukee Historic Preservation

Copies to: Development Center, Ald. Robert Bauman, Inspector Bret Radke (286-2553), Inspector Heidi Weed

1203 N. 10th Street showing
location of new projecting,
Type A sign.



Proposed sign location



Illustration of new sign,
14'-0" above sidewalk.

GENERAL SPECIFICATIONS:

ONE (1) DOUBLE SIDED, FLAG MOUNTED ILLUMINATED CABINET

CUSTOM FABRICATED 10" DEEP ALUMINUM CABINET WITH 1.5" ANGLE RETAINERS AND AKZO NOBEL GRIP-GARD PLUS POLYURETHANE SATIN BLACK PAINTED FINISH

.125 ALUMINUM FACES WITH AKZO NOBEL GRIP-GARD PLUS POLYURETHANE SATIN BLACK PAINTED FINISH AND PAINTED PANTONE 485C RED STRIPING OUTLINES

ALL RED STRIPING TO ALSO HAVE SLOAN FLEXIBRIGHT FLEXIBLE RED LED BORDER TUBING

LOGO & *BLUE RIBBON PUB*: 13" DEEP CUSTOM FABRICATED ALUMINUM CABINETS WITH .125" ROUTED ALUMINUM FACES BACKED WITH 1/8" WHITE ACRYLIC & 3M TRANSLUCENT VINYL

JACKSON'S: 3" DEEP WHITE (.040 ALUMINUM) OPEN FACED CHANNEL LETTERS WITH BOREALIS SII LED LAMPS

CABINET TO BE FLAG MOUNTED 14' ABOVE GRADE TO BUILDING USING 3" X 3" SQUARE STEEL TUBING AND 1/4" STEEL PLATES THROUGH BOLTED AROUND BRICK COLUMNS







MOUNTING BRACKETS TO BE PAINTED AKZO NOBEL BIEGE (TBD)

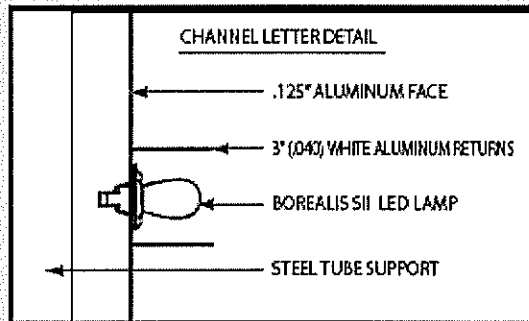
**SURVEY NEEDED TO ENSURE MOUNTING DETAILS

INSTALLATION ACCORDING TO NEC CODE #600

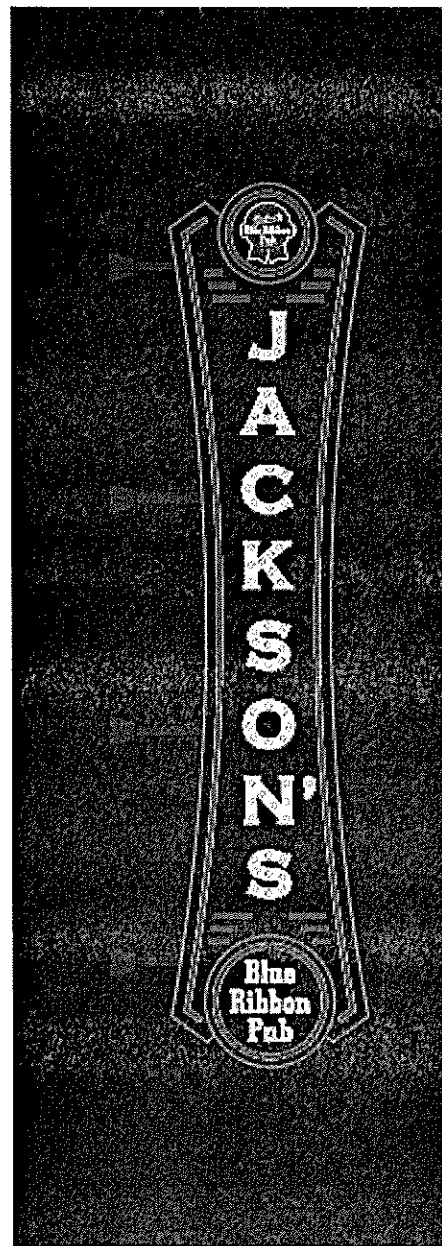
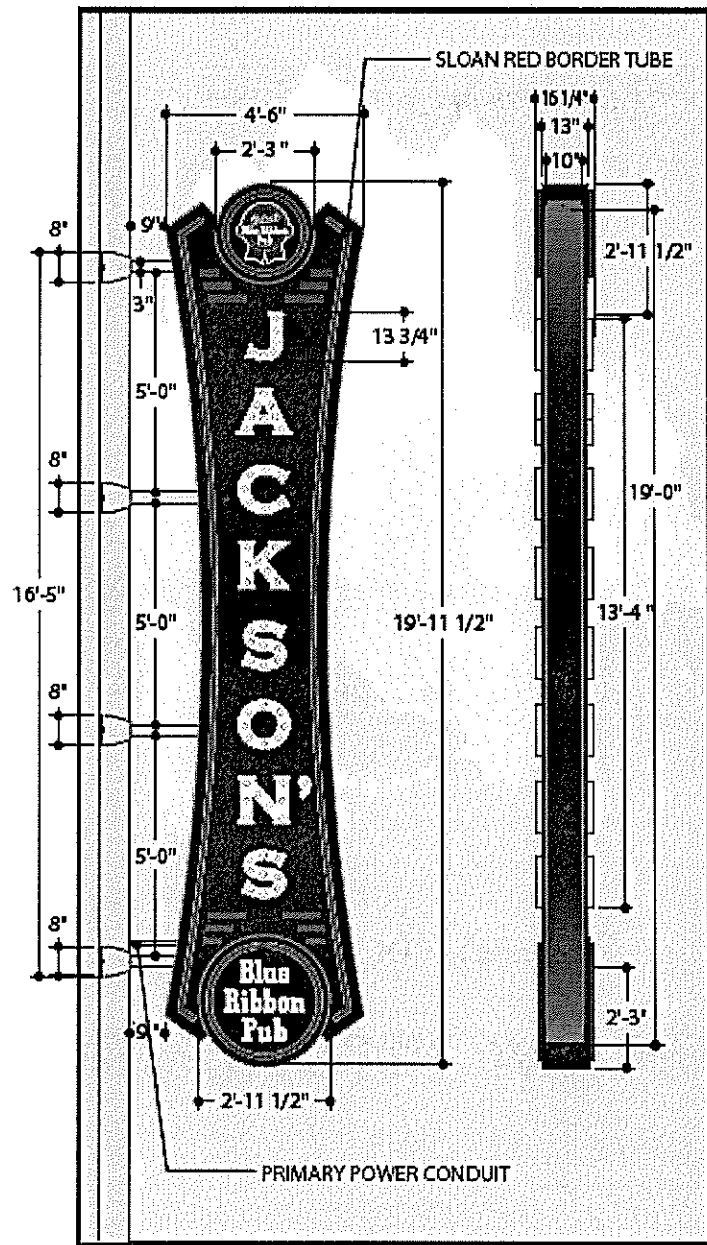
ELECTRICAL REQUIREMENTS: CUSTOMER TO PROVIDE FINAL ELECTRICAL CONNECTION

SQUARE FOOTAGE: 90 SQUARE FEET

-  AKZO NOBEL SATIN BLACK (CABINET)
-  AKZO NOBEL TO MATCH PANTONE 485C RED (STRIPING)
-  AKZO NOBEL TO BEIGE (BRACKETS)
-  3M TRANSLUCENT (3630-97) BRISTOL BLUE VINYL
-  3M TRANSLUCENT (3630-33) RED VINYL
-  3" WHITE (.040) ALUMINUM RETURNS



Specifications for new sign



Elevation drawings of new sign. Main letters to be open channel type filled with LED lamps that will be constant (no tracer effect). Red LED tubing at border of sign. Logo and "Blue ribbon Pub" to be type A made from a routed aluminum panel and backed with acrylic for internal illumination.