



# Certificate of Appropriateness

Milwaukee Historic Preservation Commission/200 E. Wells Street/Milwaukee, WI 53202/phone 414-286-5712/fax 414-286-3004

**Property** 2625 N. DOWNER AV. **Downer Avenue Historic District**  
**Description of work** Install steel and fabric canopy over sidewalk.  
**Date issued** 4/15/2013 **PTS ID** 86681 **COA, canopy over sidewalk**

In accordance with the provisions of Section 320-21 (11) and (12) of the Milwaukee Code of Ordinances, the Milwaukee Historic Preservation Commission has issued a certificate of appropriateness for the work listed above. The work was found to be consistent with preservation guidelines. The following conditions apply to this certificate of appropriateness:

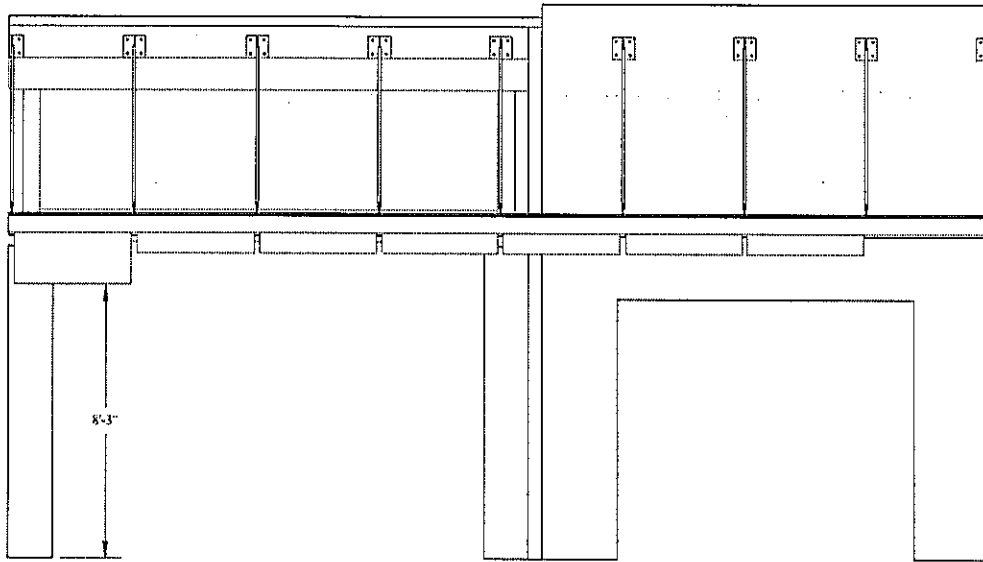
All work will be done according to attached drawings and specifications. Fabric for canopy must be of non-shiny acrylic material that approximates traditional canvas.

All work must be done in a craftsman-like manner, and must be completed within one year of the date this certificate was issued. Staff must approve any changes or additions to this certificate before work begins. Work that is not completed in accordance with this certificate may be subject to correction orders or citations. If you require technical assistance, please contact Paul Jakubovich of the Historic Preservation staff as follows: Phone: (414) 286-5712 Fax: (414) 286-3004 E-mail: [pjakub@milwaukee.gov](mailto:pjakub@milwaukee.gov).

If permits are required, you are responsible for obtaining them from the Milwaukee Development Center. If you have questions about permit requirements, please consult the Development Center's web site, [www.milwaukee.gov/build](http://www.milwaukee.gov/build), or call (414) 286-8210.

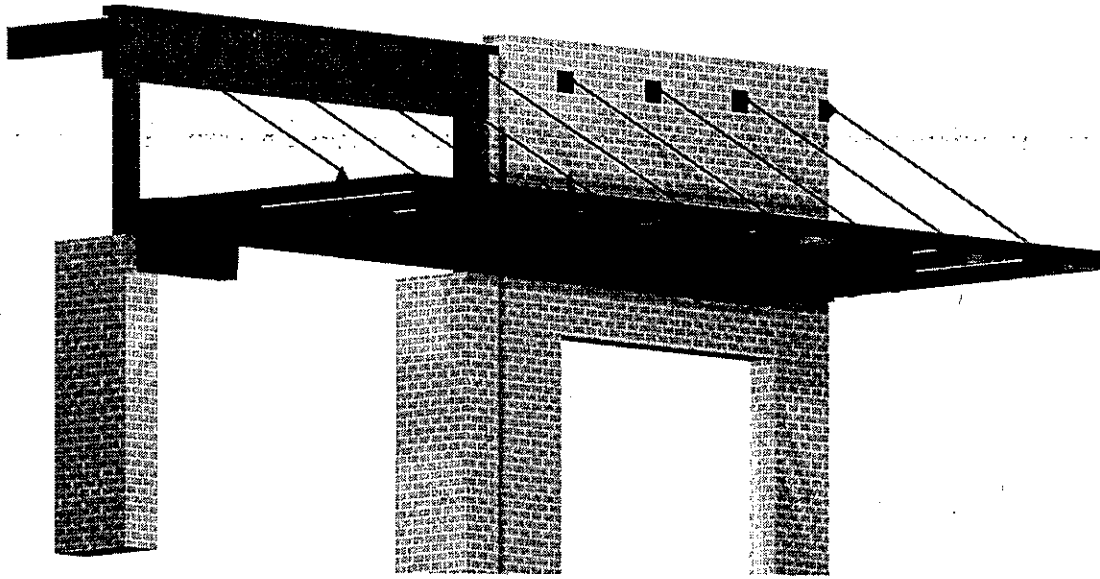
Paul Jakubovich  
City of Milwaukee Historic Preservation

Copies to: Development Center, Ald. Nik Kovac, Inspector Bill Richter (286-2518), Inspector Heidi Weed

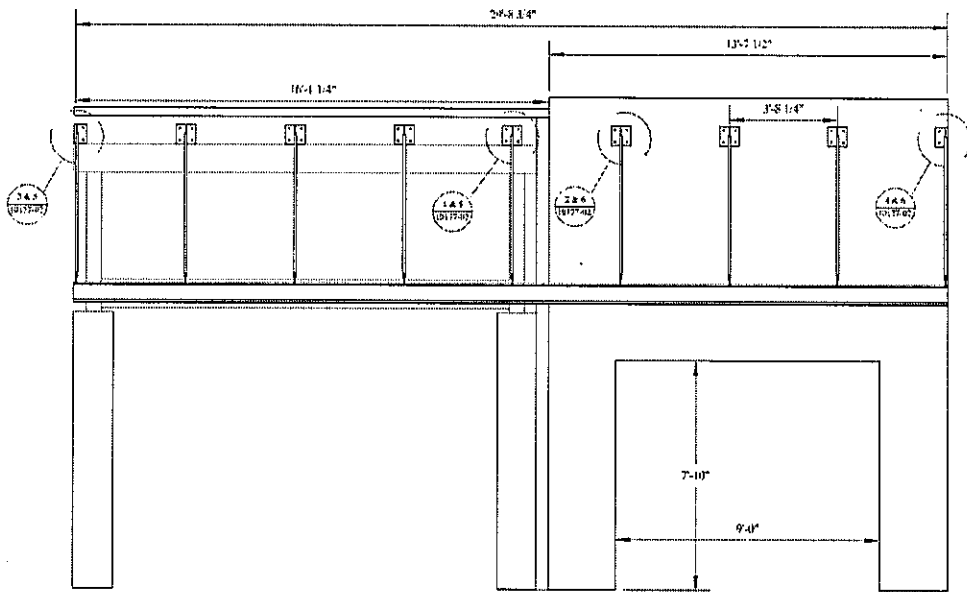


Elevation drawing (top)  
and perspective of new  
canopy over storefront  
at 2625 N. Downer  
Avenue

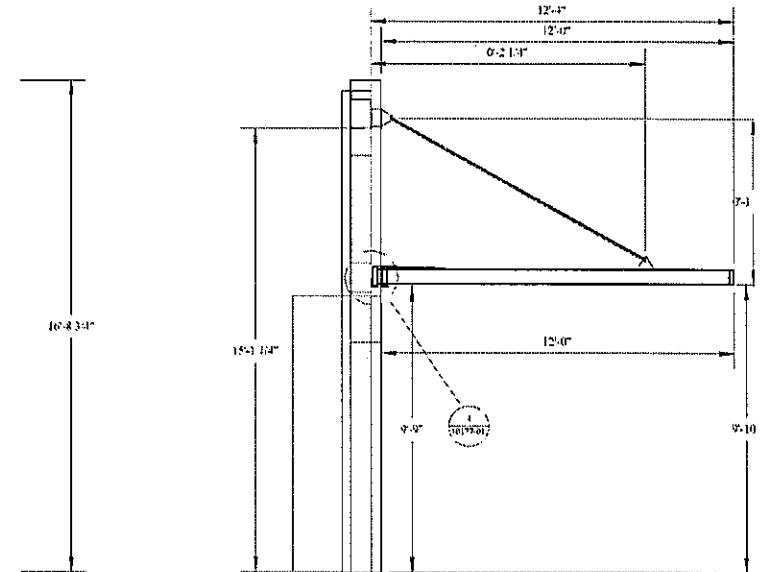
D EAST ELEVATION



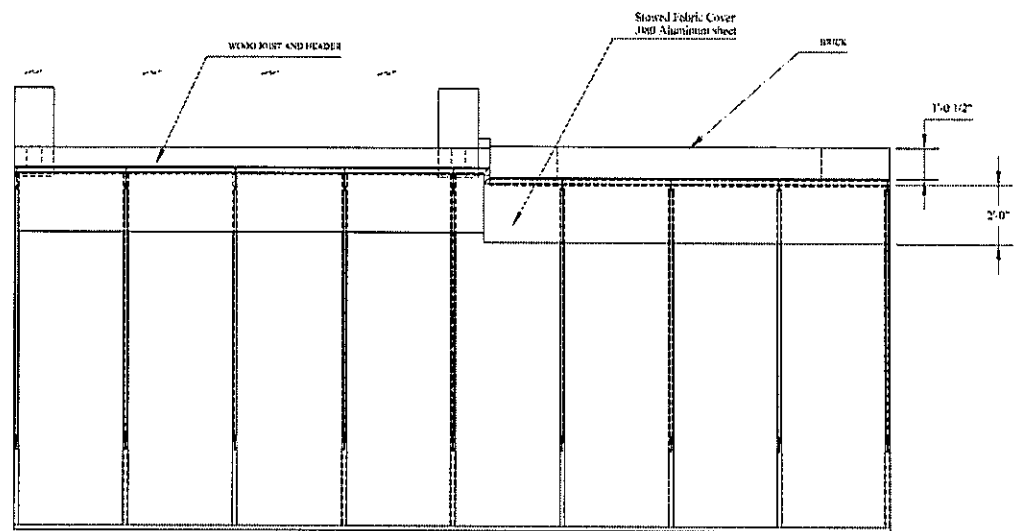




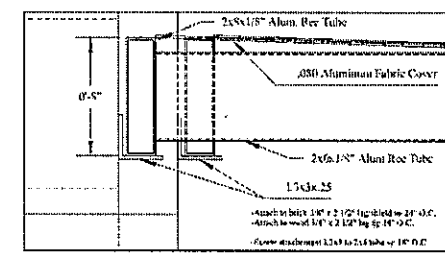
① EAST ELEVATION



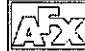
② SOUTH ELEVATION



③ PLAN VIEW



④ EAST ELEVATION

 An ornamental division of Sign Effects, Inc. 1827 W Glendale Ave Milwaukee, WI 53209 ph. 414.264.5504 fx 414.264.5664		<b>SUNSCREEN/ CANOPY</b>	
		TITLE VIA DOWNER 2625 N Downer Ave Milwaukee, WI 53211	
SIZE	CAGE CODE	DWG NO	dated 4-1-13
B		10177-01	
SCALE	1'-48"		SHEET

Plan and elevation drawings for new canopy over sidewalk