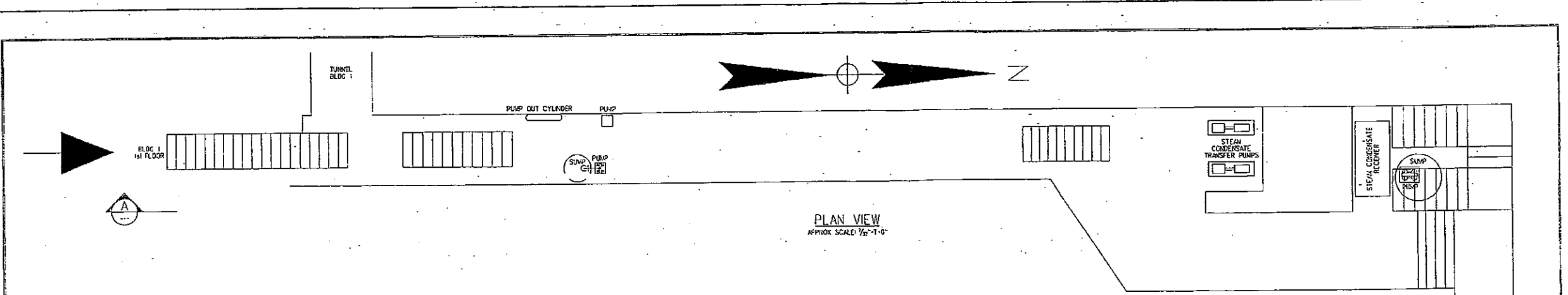


MILLER BREWING COMPANY
MILWAUKEE PLANT
FACILITY LAYOUT

DATE: JUNE 20, 1988

BUILDING LEGEND	
1A	ENGINE ROOM AND COOLER BLDG.
2	ENGINE ROOM ADDITION
3	ENGINE ROOM
4	ENGINE ROOM ANNEX
5	HOP STORAGE AND UTILITIES OFFICE
6	ENGINE ROOM ANNEX
7	BOILER HOUSE
8	CONDENSER BLDG.
9	PUMP AND TANK BLDG.
10	HOUSE - A
11	HOUSE - B
12	HOUSE - C
13	HOUSE - D
14	HOUSE - E
15	HOUSE - F
16	HOUSE - G
17	HOUSE - H
18	QUALITY ASSURANCE AND MAINTENANCE BLDG.
19	MAINTENANCE SHOP AND OFFICES
20	HOUSE - I
21	HOUSE - J
22	HOUSE - K
23	HOUSE - L
24	HOUSE - M
25	HOUSE - N
26	HOUSE - O
27	HOUSE - P
28	HOUSE - Q
29	HOUSE - R
30	HOUSE - S
31	HOUSE - T
32	HOUSE - U
33	HOUSE - V
34	HOUSE - W
35	HOUSE - X
36	HOUSE - Y
37	HOUSE - Z
38	HOUSE - AA
39	HOUSE - AB
40	HOUSE - AC
41	HOUSE - AD
42	HOUSE - AE
43	HOUSE - AF
44	HOUSE - AG
45	HOUSE - AH
46	HOUSE - AI
47	HOUSE - AJ
48	HOUSE - AK
49	HOUSE - AL
50	HOUSE - AM
51	HOUSE - AN
52	HOUSE - AO
53	HOUSE - AP
54	HOUSE - AQ
55	HOUSE - AR
56	HOUSE - AS
57	HOUSE - AT
58	HOUSE - AU
59	HOUSE - AV
60	HOUSE - AW
61	HOUSE - AX
62	HOUSE - AY
63	HOUSE - AZ
64	HOUSE - BA
65	HOUSE - BB
66	HOUSE - BC
67	HOUSE - BD
68	HOUSE - BE
69	HOUSE - BF
70	HOUSE - BG
71	HOUSE - BH
72	HOUSE - BI
73	HOUSE - BJ
74	HOUSE - BK
75	HOUSE - BL
76	HOUSE - BM
77	HOUSE - BN
78	HOUSE - BO
79	HOUSE - BP
80	HOUSE - BQ
81	HOUSE - BR
82	HOUSE - BS
83	HOUSE - BT
84	HOUSE - BU
85	HOUSE - BV
86	HOUSE - BW
87	HOUSE - BX
88	HOUSE - BY
89	HOUSE - BZ
90	HOUSE - CA
91	HOUSE - CB
92	HOUSE - CC
93	HOUSE - CD
94	HOUSE - CE
95	HOUSE - CF
96	HOUSE - CG
97	HOUSE - CH
98	HOUSE - CI
99	HOUSE - CJ
100	HOUSE - CK
101	HOUSE - CL
102	HOUSE - CM
103	HOUSE - CN
104	HOUSE - CO
105	HOUSE - CP
106	HOUSE - CQ
107	HOUSE - CR
108	HOUSE - CS
109	HOUSE - CT
110	HOUSE - CU
111	HOUSE - CV
112	HOUSE - CW
113	HOUSE - CX
114	HOUSE - CY
115	HOUSE - CZ
116	HOUSE - DA
117	HOUSE - DB
118	HOUSE - DC
119	HOUSE - DD
120	HOUSE - DE
121	HOUSE - DF
122	HOUSE - DG
123	HOUSE - DH
124	HOUSE - DI
125	HOUSE - DJ
126	HOUSE - DK
127	HOUSE - DL
128	HOUSE - DM
129	HOUSE - DN
130	HOUSE - DO
131	HOUSE - DP
132	HOUSE - DQ
133	HOUSE - DR
134	HOUSE - DS
135	HOUSE - DT
136	HOUSE - DU
137	HOUSE - DV
138	HOUSE - DW
139	HOUSE - DX
140	HOUSE - DY
141	HOUSE - DZ
142	HOUSE - EA
143	HOUSE - EB
144	HOUSE - EC
145	HOUSE - ED
146	HOUSE - EE
147	HOUSE - EF
148	HOUSE - EG
149	HOUSE - EH
150	HOUSE - EI
151	HOUSE - EJ
152	HOUSE - EK
153	HOUSE - EL
154	HOUSE - EM
155	HOUSE - EN
156	HOUSE - EO
157	HOUSE - EP
158	HOUSE - EQ
159	HOUSE - ER
160	HOUSE - ES
161	HOUSE - ET
162	HOUSE - EU
163	HOUSE - EV
164	HOUSE - EW
165	HOUSE - EX
166	HOUSE - EY
167	HOUSE - EZ
168	HOUSE - FA
169	HOUSE - FB
170	HOUSE - FC
171	HOUSE - FD
172	HOUSE - FE
173	HOUSE - FF
174	HOUSE - FG
175	HOUSE - FH
176	HOUSE - FI
177	HOUSE - FJ
178	HOUSE - FK
179	HOUSE - FL
180	HOUSE - FM
181	HOUSE - FN
182	HOUSE - FO
183	HOUSE - FP
184	HOUSE - FQ
185	HOUSE - FR
186	HOUSE - FS
187	HOUSE - FT
188	HOUSE - FU
189	HOUSE - FV
190	HOUSE - FW
191	HOUSE - FX
192	HOUSE - FY
193	HOUSE - FZ
194	HOUSE - GA
195	HOUSE - GB
196	HOUSE - GC
197	HOUSE - GD
198	HOUSE - GE
199	HOUSE - GF
200	HOUSE - GG
201	HOUSE - GH
202	HOUSE - GI
203	HOUSE - GJ
204	HOUSE - GK
205	HOUSE - GL
206	HOUSE - GM
207	HOUSE - GN
208	HOUSE - GO
209	HOUSE - GP
210	HOUSE - GQ
211	HOUSE - GR
212	HOUSE - GS
213	HOUSE - GT
214	HOUSE - GU
215	HOUSE - GV
216	HOUSE - GW
217	HOUSE - GX
218	HOUSE - GY
219	HOUSE - GZ
220	HOUSE - HA
221	HOUSE - HB
222	HOUSE - HC
223	HOUSE - HD
224	HOUSE - HE
225	HOUSE - HF
226	HOUSE - HG
227	HOUSE - HH
228	HOUSE - HI
229	HOUSE - HJ
230	HOUSE - HK
231	HOUSE - HL
232	HOUSE - HM
233	HOUSE - HN
234	HOUSE - HO
235	HOUSE - HP
236	HOUSE - HQ
237	HOUSE - HR
238	HOUSE - HS
239	HOUSE - HT
240	HOUSE - HU
241	HOUSE - HV
242	HOUSE - HW
243	HOUSE - HX
244	HOUSE - HY
245	HOUSE - HZ
246	HOUSE - IA
247	HOUSE - IB
248	HOUSE - IC
249	HOUSE - ID
250	HOUSE - IE
251	HOUSE - IF
252	HOUSE - IG
253	HOUSE - IH
254	HOUSE - II
255	HOUSE - IJ
256	HOUSE - IK
257	HOUSE - IL
258	HOUSE - IM
259	HOUSE - IN
260	HOUSE - IO
261	HOUSE - IP
262	HOUSE - IQ
263	HOUSE - IR
264	HOUSE - IS
265	HOUSE - IT
266	HOUSE - IU
267	HOUSE - IV
268	HOUSE - IW
269	HOUSE - IX
270	HOUSE - IY
271	HOUSE - IZ
272	HOUSE - JA
273	HOUSE - JB
274	HOUSE - JC
275	HOUSE - JD
276	HOUSE - JE
277	HOUSE - JF
278	HOUSE - JG
279	HOUSE - JH
280	HOUSE - JI
281	HOUSE - JJ
282	HOUSE - JK
283	HOUSE - JL
284	HOUSE - JM
285	HOUSE - JN
286	HOUSE - JO
287	HOUSE - JP
288	HOUSE - JQ
289	HOUSE - JR
290	HOUSE - JS
291	HOUSE - JT
292	HOUSE - JU
293	HOUSE - JV
294	HOUSE - JW
295	HOUSE - JX
296	HOUSE - JY
297	HOUSE - JZ
298	HOUSE - KA
299	HOUSE - KB
300	HOUSE - KC
301	HOUSE - KD
302	HOUSE - KE
303	HOUSE - KF
304	HOUSE - KG
305	HOUSE - KH
306	HOUSE - KI
307	HOUSE - KJ
308	HOUSE - KK
309	HOUSE - KL
310	HOUSE - KM
311	HOUSE - KN
312	HOUSE - KO
313	HOUSE - KP
314	HOUSE - KQ
315	HOUSE - KR
316	HOUSE - KS
317	HOUSE - KT
318	HOUSE - KU
319	HOUSE - KV
320	HOUSE - KW
321	HOUSE - KX
322	HOUSE - KY
323	HOUSE - KZ
324	HOUSE - LA
325	HOUSE - LB
326	HOUSE - LC
327	HOUSE - LD
328	HOUSE - LE
329	HOUSE - LF
330	HOUSE - LG
331	HOUSE - LH
332	HOUSE - LI
333	HOUSE - LJ
334	HOUSE - LK
335	HOUSE - LL
336	HOUSE - LM
337	HOUSE - LN
338	HOUSE - LO
339	HOUSE - LP
340	HOUSE - LQ
341	HOUSE - LR
342	HOUSE - LS
343	HOUSE - LT
344	HOUSE - LU
345	HOUSE - LV
346	HOUSE - LW
347	HOUSE - LX
348	HOUSE - LY
349	HOUSE - LZ
350	HOUSE - MA
351	HOUSE - MB
352	HOUSE - MC
353	HOUSE - MD
354	HOUSE - ME
355	HOUSE - MF
356	HOUSE - MG
357	HOUSE - MH
358	HOUSE - MI
359	HOUSE - MJ
360	HOUSE - MK
361	HOUSE - ML
362	HOUSE - MM
363	HOUSE - MN
364	HOUSE - MO
365	HOUSE - MP
366	HOUSE - MQ
367	HOUSE - MR
368	HOUSE - MS
369	HOUSE - MT
370	HOUSE - MU
371	HOUSE - MV
372	HOUSE - MW
373	HOUSE - MX
374	HOUSE - MY
375	HOUSE - MZ
376	HOUSE - NA
377	HOUSE - NB
378	HOUSE - NC
379	HOUSE - ND
380	HOUSE - NE
381	HOUSE - NF
382	HOUSE - NG
383	HOUSE - NH
384	HOUSE - NI
385	HOUSE - NJ
386	HOUSE - NK
387	HOUSE - NL
388	HOUSE - NM
389	HOUSE - NN
390	HOUSE - NO
391	HOUSE - NP
392	HOUSE - NQ
393	HOUSE - NR
394	HOUSE - NS
395	HOUSE - NT
396	HOUSE - NU
397	HOUSE - NV
398	HOUSE - NW
399	HOUSE - NX
400	HOUSE - NY
401	HOUSE - NZ
402	HOUSE - OA
403	HOUSE - OB
404	HOUSE - OC
405	HOUSE - OD
406	HOUSE - OE
407	HOUSE - OF
408	HOUSE - OG
409	HOUSE - OH
410	HOUSE - OI
411	HOUSE - OJ
412	HOUSE - OK
413	HOUSE - OL
414	HOUSE - OM
415	HOUSE - ON
416	HOUSE - OO
417	HOUSE - OP
418	HOUSE - OQ
419	HOUSE - OR
420	HOUSE - OS
421	HOUSE - OT
422	HOUSE - OU
423	HOUSE - OV
424	HOUSE - OW
425	HOUSE - OX
426	HOUSE - OY
427	HOUSE - OZ
428	HOUSE - PA
429	HOUSE - PB
430	HOUSE - PC
431	HOUSE - PD
432	HOUSE - PE
433	HOUSE - PF
434	HOUSE - PG
435	HOUSE - PH
436	HOUSE - PI
437	HOUSE - PJ
438	HOUSE - PK
439	HOUSE - PL
440	HOUSE - PM
441	HOUSE - PN
442	HOUSE - PO
443	HOUSE - PP
444	HOUSE - PQ
445	HOUSE - PR
446	HOUSE - PS
447	HOUSE - PT
448	HOUSE - PU
449	HOUSE - PV
450	HOUSE - PW
451	HOUSE - PX
452	HOUSE - PY
453	HOUSE - PZ
454	HOUSE - QA
455	HOUSE - QB
456	HOUSE - QC
457	HOUSE - QD
458	HOUSE - QE
459	HOUSE - QF
460	HOUSE - QG
461	HOUSE - QH
462	HOUSE - QI
463	HOUSE - QJ
464	HOUSE - QK
465	HOUSE - QL
466	HOUSE - QM
467	HOUSE - QN
468	HOUSE - QO
469	HOUSE - QP
470	HOUSE - QQ
471	HOUSE - QR
472	HOUSE - QS
473	HOUSE - QT
474	HOUSE - QU
475	HOUSE - QV
476	HOUSE - QW
477	HOUSE - QX
478	HOUSE - QY
479	HOUSE - QZ
480	HOUSE - RA
481	HOUSE - RB
482	HOUSE - RC
483	HOUSE - RD
484	HOUSE - RE
485	HOUSE - RF
486	HOUSE - RG
487	HOUSE - RH
488	HOUSE - RI
489	HOUSE - RJ
490	HOUSE - RK
491	HOUSE - RL
492	HOUSE - RM
493	HOUSE - RN
494	HOUSE - RO
495	HOUSE - RP
496	HOUSE - RQ
497	HOUSE - RR
498	HOUSE - RS
499	HOUSE - RT
500	HOUSE - RU
501	HOUSE - RV
502	HOUSE - RW
503	HOUSE - RX
504	HOUSE - RY
505	HOUSE - RZ
506	HOUSE - SA
507	HOUSE - SB
508	HOUSE - SC
509	HOUSE - SD
510	HOUSE - SE
511	HOUSE - SF
512	HOUSE - SG
513	HOUSE - SH
514	HOUSE - SI
515	HOUSE - SJ
516	HOUSE - SK
517	HOUSE - SL
518	HOUSE - SM
519	HOUSE - SN
520	HOUSE - SO
521	HOUSE - SP
522	HOUSE - SQ
523	HOUSE - SR
524	HOUSE - SS
525	HOUSE - ST
526	HOUSE - SU
527	HOUSE - SV
528	HOUSE - SW
529	HOUSE - SX
530	HOUSE - SY
531	HOUSE - SZ
532	HOUSE - TA
533	HOUSE - TB
534	HOUSE - TC
535	HOUSE - TD
536	HOUSE - TE
537	HOUSE - TF
538	HOUSE - TG
539	HOUSE - TH
540	HOUSE - TI
541	HOUSE - TJ
542	HOUSE - TK
543	HOUSE - TL
544	HOUSE - TM
545	HOUSE - TN
546	HOUSE - TO
547	HOUSE - TP
548	HOUSE - TQ
549	HOUSE - TR
550	HOUSE - TS
551	HOUSE - TT
552	HOUSE - TU
553	HOUSE - TV
554	HOUSE - TW
555	HOUSE - TX
556	HOUSE - TY
557	HOUSE - TZ
558	HOUSE - UA
559	HOUSE - UB
560	HOUSE - UC
561	HOUSE - UD
562	HOUSE - UE
563	HOUSE - UF
564	HOUSE - UG
565	HOUSE - UH
566	HOUSE - UI
567	HOUSE - UJ
568	HOUSE - UK
569	HOUSE - UL
570	HOUSE - UM
571	HOUSE - UN
572	HOUSE - U



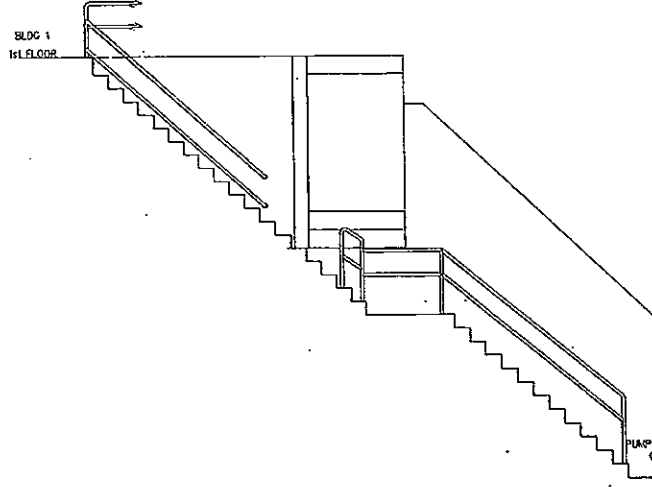
PLAN VIEW
APPROX SCALE: 1/32"=1'-0"

THIS TUNNEL CONTAINS THE FOLLOWING UTILITIES AND PROCESSES

- | | |
|---------------------------------|--------------------------------------|
| 1" AMMONIA PUMP OUT | 1" ELECTRICAL CONDUIT |
| 1" HDSE | PLASTIC HOSE |
| 6" 170° HOT WATER | 6" AMMONIA SUCTION 24 PSIG |
| 1 5/32" COMPRESSED AIR | 4" FROM STEAM CONDENSATE PUMPS |
| 1 5/32" CARBON DIOXIDE | 3" ELECTRICAL CONDUIT |
| 1 5/32" INSTRUMENT AIR | 3 1/2" ELECTRICAL CONDUIT |
| 1" ELECTRICAL CONDUIT | 12 LB STEAM |
| 2" ELECTRICAL CONDUIT | 6" PROCESS PURIFIED WATER |
| 2" ELECTRICAL CONDUIT | 1" CARBON DIOXIDE |
| 1" AMMONIA PUMPOUT | 3" ELECTRICAL CONDUIT 4000 VOLTS |
| 1" AMMONIA SUCTION 24 PSIG | 3" ELECTRICAL CONDUIT 4000 VOLTS |
| 1" HOSE | 1" ELECTRICAL CONDUIT |
| 1 5/32" AMMONIA LIQUID 185 PSIG | 3 1/2" ELECTRICAL CONDUIT |
| 1 1/32" PIPE | 1" ELECTRICAL CONDUIT |
| 115 LB STEAM | 1 5/32" PLASTIC LINE |
| 1" AMMONIA PUMP OUT | 1 5/32" WIRE |
| 6" WORT COOLER WATER | 3 1/2" ELECTRICAL CONDUIT |
| 1" ELECTRICAL CONDUIT | 3 1/2" ELECTRICAL CONDUIT |
| 3" FROM SUMP PUMP | AMMONIA LIQUID 185 PSIG |
| ORIGINATES IN TUNNEL | 1" STEAM CONDENSATE TO TANK |
| 6" WORT COOLER WATER | 1" STEAM CONDENSATE |
| 3" COMPRESSED AIR | 1" STEAM CONDENSATE |
| FIBER OPTIC | 3 1/2" ELECTRICAL CONDUIT TERMINATES |
| FIBER OPTIC | IN TUNNEL |
| 3 1/2" ELECTRICAL CONDUIT | 1" STEAM CONDENSATE |
| 12 LB STEAM LINE | 1 5/32" LINE TERMINATES |
| 1" PLASTIC LINE | IN BREWHOUSE |
| 3 1/2" ELECTRICAL CONDUIT | |

UTILITIES
ENGINE ROOM
BLDG 1

BLDG 33
BREWHOUSE

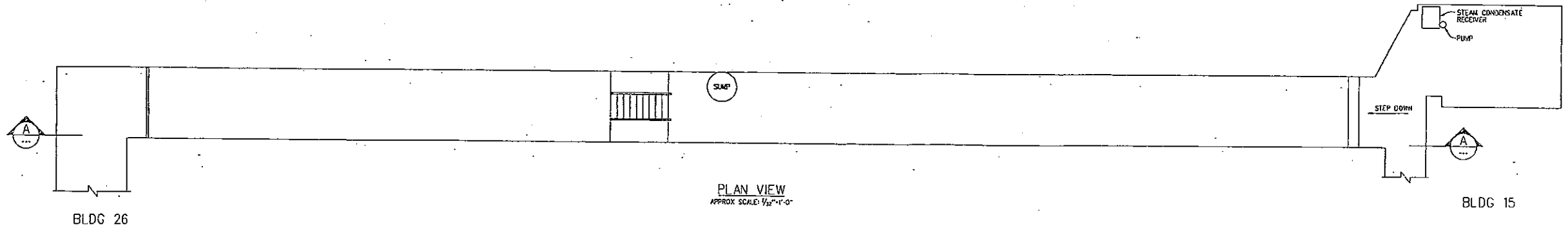
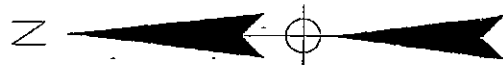


EAST ELEVATION LOOKING WEST

SECTION A-A
APPROX SCALE: 1/32"=1'-0"

SP 369

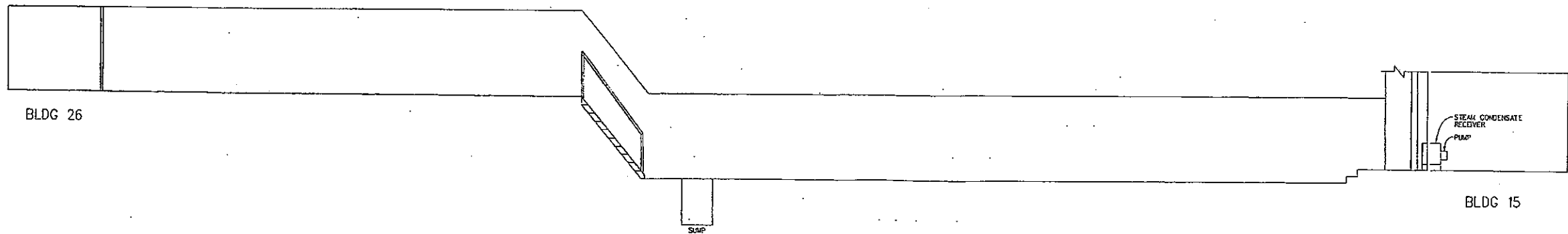
VERIFY SCALE BAR IS ONE INCH ON ORIGINAL DRAWING. 0 1" IF NOT ONE INCH ON THIS SHEET, ADJUST SCALES ACCORDINGLY	OSOR DR O.J.SCHUTTEN CRK APVO	NO. DATE REVISION BY APVO	TRIAD ENGINEERING INCORPORATED <small>© 1993 Triad Engineering</small>	325 East Chicago Street Milwaukee, Wisconsin 53202 (414)-291-8840 FAX 291-8841	MILLER BREWING COMPANY MILWAUKEE PLANT TUNNEL CONNECTING BLDG 1 UTILITIES AND BLDG 33 BREWHOUSE	SHEET NO. A DWG NO. 10726-0 DATE APRIL 1993 PROJ NO. 10726
---	--	---------------------------------	--	---	--	---



PLAN VIEW
APPROX SCALE: 1/8"=1'-0"

THIS TUNNEL CONTAINS THE FOLLOWING UTILITIES AND PROCESSES

- | | |
|--------------------------|----------------------------------|
| 2 1/32" STEAM CONDENSATE | 3/32" ELECTRICAL CONDUIT |
| 4" LOOP 3 SUPPLY | 3/32" ELECTRICAL CONDUIT |
| 4" LOOP 1 RETURN | 3" 4000V ELECTRICAL CONDUIT |
| 4" LOOP 2 SUPPLY | 1" ELECTRICAL CONDUIT |
| 3/32" ELECTRICAL CONDUIT | 20" 12 LB STEAM |
| 3/32" ELECTRICAL CONDUIT | 4" LOOP 9 |
| 6" LOOP 1 SUPPLY | 1 1/32" DISCHARGE LINE FROM SUMP |

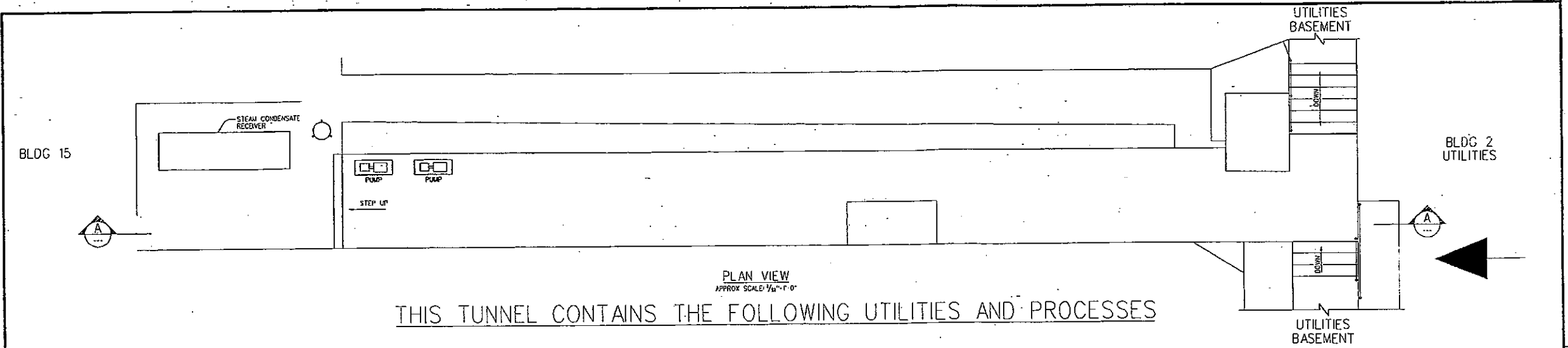


WEST ELEVATION LOOKING EAST

SECTION A
APPROX SCALE: 1/8"=1'-0"

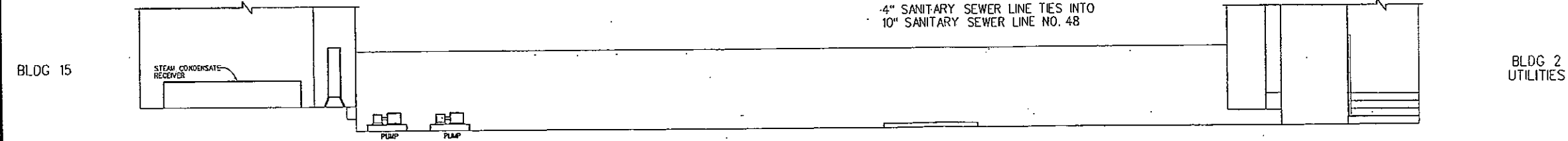
SP 428

VERIFY SCALE BAR IS ONE INCH ON ORIGINAL DRAWING. 0" = 1' IF NOT ONE INCH ON THIS SHEET, ADJUST SCALES ACCORDINGLY	DSGN DR D.J.SCHUTTEN CDR APVD	NO. DATE REVISION BY APVD	TRIAD ENGINEERING INCORPORATED 325 East Chicago Street Milwaukee, Wisconsin 53202 4141-291-8840 FAX 291-8841	MILLER BREWING COMPANY MILWAUKEE PLANT TUNNEL CONNECTING BLDG 15 AND BLDG 26	SHEET NO. 11018-0A DATE APRIL 1993 PROJ. NO. 11018
	(B)				



PLAN VIEW
 APPROX SCALE: 1/4" = 1'-0"
 THIS TUNNEL CONTAINS THE FOLLOWING UTILITIES AND PROCESSES

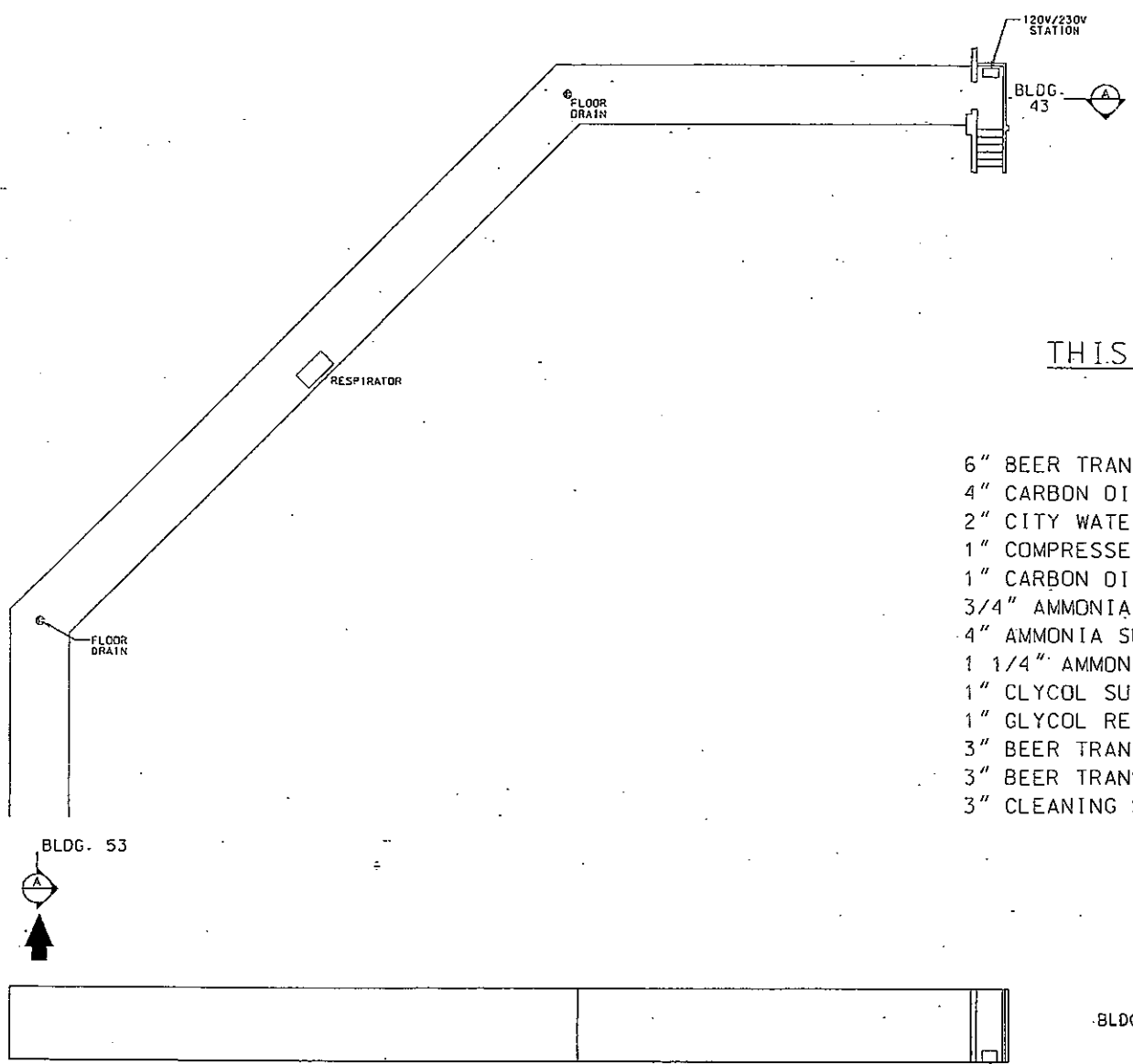
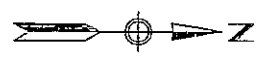
- 2" STEAM CONDENSATE
- 20" 12 lb STEAM
- 6" 115 lb STEAM
- 6" 115 lb STEAM
- 10" PPW - PROCESS PURIFIED WATER
- 2" SODIUM HYDROXIDE
- 2" STEAM CONDENSATE
- 2" INSTRUMENT AIR
- 1 15/32" ELECTRICAL CONDUIT
- 1 1/2" CITY WATER
- 2" FROM STEAM CONDENSATE PUMPS IN TUNNEL
- 2 15/32" STEAM CONDENSATE
- 2" STEAM CONDENSATE
- 2" STEAM CONDENSATE FROM VERTICAL TANK
- 4" 4000 VOLT ELECTRICAL CONDUIT
- 2" BLACK PLASTIC ELECTRICAL CONDUIT
- 2" ELECTRICAL CONDUIT
- 6" COMPRESSED AIR
- 4" CARBON DIOXIDE DISTRIBUTION (SUPPLY)
- 3" FROM STEAM CONDENSATE TANK TO PUMP (EAST)
- 3" FROM STEAM CONDENSATE TANK TO PUMP (WEST)
- 2" DRAIN LINE OFF OF LINE 13
- 3/32" ELECTRICAL CONDUIT, TERMINATES IN TUNNEL
- 3/32" START IN TUNNEL OFF OF LINE 15
- 3/32" STEAM TRAP DRAIN LINE, TERMINATES IN TUNNEL
- 3/32" ELECTRICAL CONDUIT TO PUMP
- 3/32" ELECTRICAL CONDUIT TO PUMP
- 1 5/32" ELECTRICAL CONDUIT - BLACK CABLE
- 1 5/32" CARBON DIOXIDE DISTRIBUTION (SUPPLY)
- 2 15/32" STEAM CONDENSATE TO TANK
- 2 15/32" STEAM CONDENSATE TO TANK
- 2" STEAM CONDENSATE TO TANK
- 2" STEAM CONDENSATE TO TANK
- 2" ELECTRICAL CONDUIT
- 1" ELECTRICAL CONDUIT REDUCE DOWN TO 3/32", TERMINATES IN TUNNEL
- 6" CITY WATER
- 10" PPW - PROCESS PURIFIED WATER
- 4" ELECTRICAL CONDUIT
- 2" ELECTRICAL CONDUIT
- 2" ELECTRICAL CONDUIT
- 2" ELECTRICAL CONDUIT
- 1 15/32" ELECTRICAL CONDUIT
- 1 5/32" ELECTRICAL CONDUIT
- 1 1/2" ELECTRICAL CONDUIT
- 3/32" ELECTRICAL CONDUIT, TERMINATES IN TUNNEL
- 4" SANITARY SEWER LINE (SECTION B) TO 10" IN TUNNEL (SECTION C)
- 4" SANITARY SEWER LINE TIES INTO 10" SANITARY SEWER LINE NO. 48



SOUTH ELEVATION LOOKING NORTH

SECTION A

VERIFY SCALE BAR IS ONE INCH ON ORIGINAL DRAWING. IF NOT ONE INCH ON THIS SHEET, ADJUST SCALES ACCORDINGLY.	DSGN DR D.J.SCHUTTEN CKR APVD	NO. DATE REVISION BY APVD	TRIAD ENGINEERING INCORPORATED 325 East Chicago Street Milwaukee, Wisconsin 53202 (414)-291-8840 FAX 291-8841	MILLER BREWING COMPANY MILWAUKEE PLANT TUNNEL CONNECTING BLDG 2 AND BLDG 15	SHEET NO. 11018-0 DATE APRIL 1993 PROJ. NO. 11018
	R/L/A				



THIS TUNNEL CONTAINS THE FOLLOWING UTILITIES
AND PROCESSES

- | | |
|---------------------------------------|---|
| 6" BEER TRANSFER (MR HEADER TO K-HSE) | 4" NON-CHLORINATED PURIFIED PROCESS WATER |
| 4" CARBON DIOXIDE GAS, PURE | 6" BEER TRANSFER |
| 2" CITY WATER | 3/4" 110V ELECTRICAL CONDUIT (4 EACH) |
| 1" COMPRESSED AIR | 2" 230V ELECTRICAL CONDUIT (3 EACH) |
| 1" CARBON DIOXIDE GAS, PURE | 1" CARBON DIOXIDE |
| 3/4" AMMONIA PUMP OUT | 3" BEER TRANSFER (PUMP 4087 FROM K-HSE) |
| 4" AMMONIA SUCTION | 3" BEER TRANSFER (LINE 110XX TO K-HSE 3A) |
| 1 1/4" AMMONIA LIQUID | 3" BEER TRANSFER (LINE 109XX TO K-HSE 3B) |
| 1" GLYCOL SUPPLY | |
| 1" GLYCOL RETURN | |
| 3" BEER TRANSFER (BT OUT FROM K-HSE) | |
| 3" BEER TRANSFER (K-HSE) | |
| 3" CLEANING SOLUTION SUPPLY | |

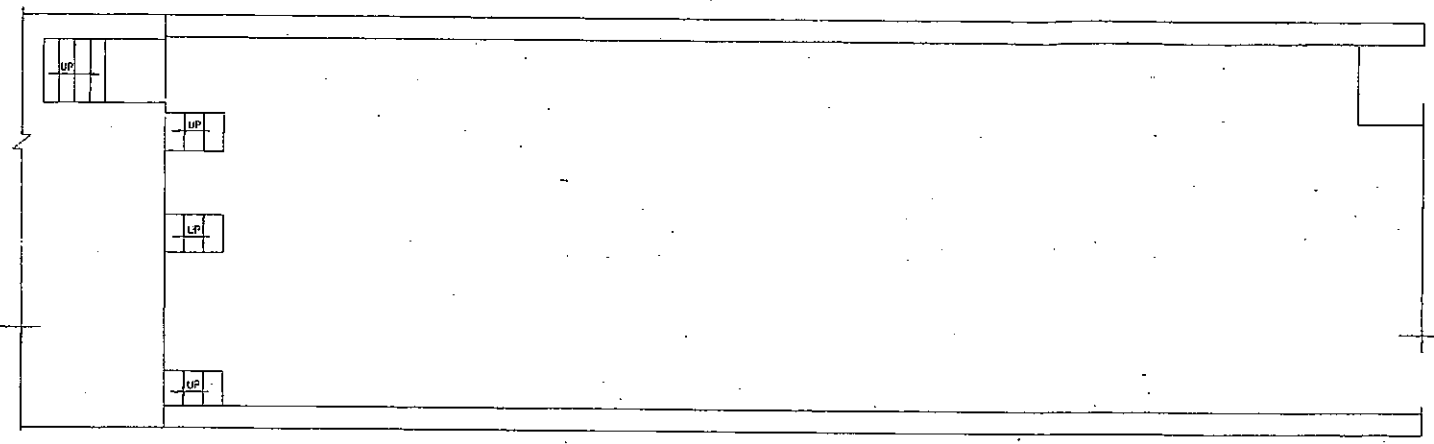
EAST ELEVATION LOOKING WEST

SECTION **A**
APPROX. SCALE: 1/8"=1'-0"

N/A

MILLER BREWING COMPANY MILWAUKEE, WISCONSIN									
PLANT 01									
TUNNEL CONNECTING BLDG. 43 & BLDG. 53									
DR		DATE		INITIAL		DATE		SUBJECT NO. NO. RELEASE NO. SHEET	
CH		1-93		N/A				TRIAD JOB NO. 9555T4	
APPR.								ORNG. NO. 55574-0	
DESCRIPTION	REV.	OWNED BY	DATE	DESCRIPTION	REV.	OWNED BY	DATE	SCALE	1/8"=1'-0"

BLDG 58



BLDG 44
2nd FLOOR

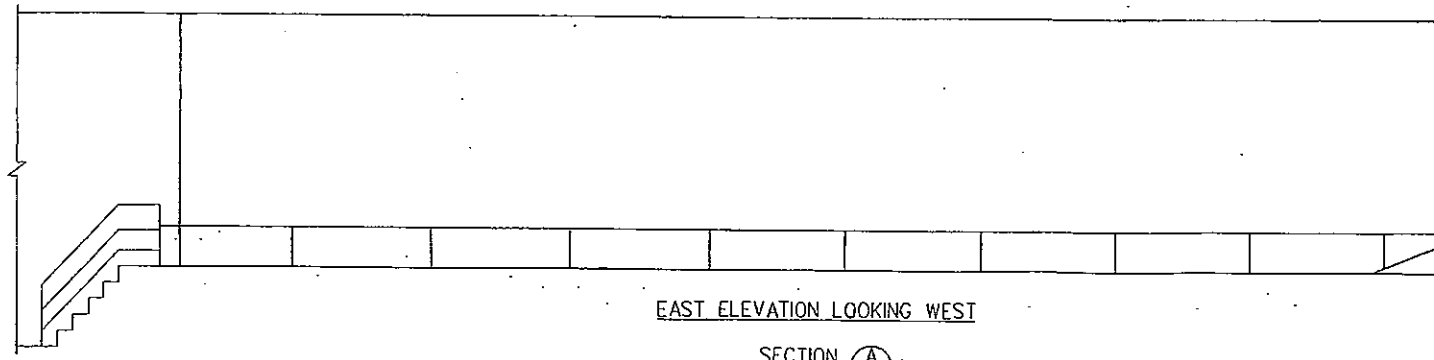


PLAN VIEW
APPROX SCALE: 1/8"=1'-0"

THIS PIPE BRIDGE CONTAINS THE FOLLOWING UTILITIES AND PROCESSES

- 1/2" ELECTRICAL CONDUIT
- 1/2" ELECTRICAL CONDUIT
- 3/4" ELECTRICAL CONDUIT - 2 LINES, TERMINATES IN BRIDGE
- 12" HIGH TEMPERATURE HOT WATER RETURN
- 12" HIGH TEMPERATURE HOT WATER SUPPLY
- 1/2" PLASTIC ELECTRICAL CONDUIT
- 8" HIGH PRESSURE STEAM (115 lb)
- 3/2" NATURAL GAS
- 1" ELECTRICAL CONDUIT
- 8" FINISHED BEER 13211
- 4" PPW - PROCESS PURIFIED WATER
- 2" PROCESSED WATER (3211)
- 3/2" ELECTRICAL CONDUIT
- 3" PPW - PROCESS PURIFIED WATER
- 8" FINISHED BEER 1311A1
- 3" PPW - PROCESSED PURIFIED WATER (311A)
- 8" FINISHED BEER 131B1
- 3" PPW - PROCESSED PURIFIED WATER (31B1)
- 2" FIRE SPRINKLER LINE
- 1/2" ELECTRICAL CONDUIT
- 1/2" ELECTRICAL CONDUIT
- 3/2" ELECTRICAL CONDUIT, TERMINATES IN BRIDGE
- 3/2" ELECTRICAL CONDUIT, TERMINATES IN BRIDGE
- 3/2" ELECTRICAL CONDUIT
- 4" ELECTRICAL CONDUIT, 20,400 VOLTS
- 3/2" ELECTRICAL CONDUIT
- 1" ELECTRICAL CONDUIT, TERMINATES IN BRIDGE
- 1/2" ELECTRICAL CONDUIT, TERMINATES IN BRIDGE
- 1/2" ELECTRICAL CONDUIT
- 2" ELECTRICAL CONDUIT 2 LINES
- 2" ELECTRICAL CONDUIT
- 3/2" ELECTRICAL CONDUIT
- 4" ELECTRICAL CONDUIT
- 1" ELECTRICAL CONDUIT
- 1/2" ELECTRICAL CONDUIT, TERMINATES IN BRIDGE
- 3/2" ELECTRICAL CONDUIT 12 LINES
- 1" ELECTRICAL CONDUIT
- 3/2" ELECTRICAL CONDUIT, TERMINATES IN BRIDGE
- 3/2" ELECTRICAL CONDUIT, TERMINATES IN BRIDGE
- 3/2" ELECTRICAL CONDUIT, TERMINATES IN BRIDGE
- 3/2" ELECTRICAL CONDUIT
- 1/2" ELECTRICAL CONDUIT
- 3/2" ELECTRICAL CONDUIT (ENDS IN BRIDGE)
- 3/2" COMPRESSED AIR
- 3/2" ELECTRICAL CONDUIT, TERMINATES IN BRIDGE
- 3/2" ELECTRICAL CONDUIT, TERMINATES IN BRIDGE
- 2" ELECTRICAL CONDUIT, TERMINATES IN BRIDGE
- 1" ELECTRICAL CONDUIT
- 1" ELECTRICAL CONDUIT, TERMINATES IN BRIDGE
- 3/2" ELECTRICAL CONDUIT, TERMINATES IN BRIDGE

BLDG 58



BLDG 44
2nd FLOOR

EAST ELEVATION LOOKING WEST

SECTION A
APPROX SCALE: 1/8"=1'-0"

SP 1976

VERIFY SCALE BAR IS ONE INCH ON ORIGINAL DRAWING. 0' = 1' IF NOT ONE INCH ON THIS SHEET, ADJUST SCALES ACCORDINGLY	DESIGN	NO.	DATE	REVISION	BY	APPROVED	TRIAD ENGINEERING INCORPORATED 325 East Chicago Street Milwaukee, Wisconsin 53202 14743-291-8840 FAX 291-8841	MILLER BREWING COMPANY MILWAUKEE PLANT STATE STREET OVERPASS-BLDG 59, CONNECTING BLDG 44 AND BLDG 58	SHEET NO. 1101B-00B DATE APRIL 1993 PROJ. NO. 1101B
	CHECKED BY O.J. SCHITTEN								