

PLAT OF SURVEY

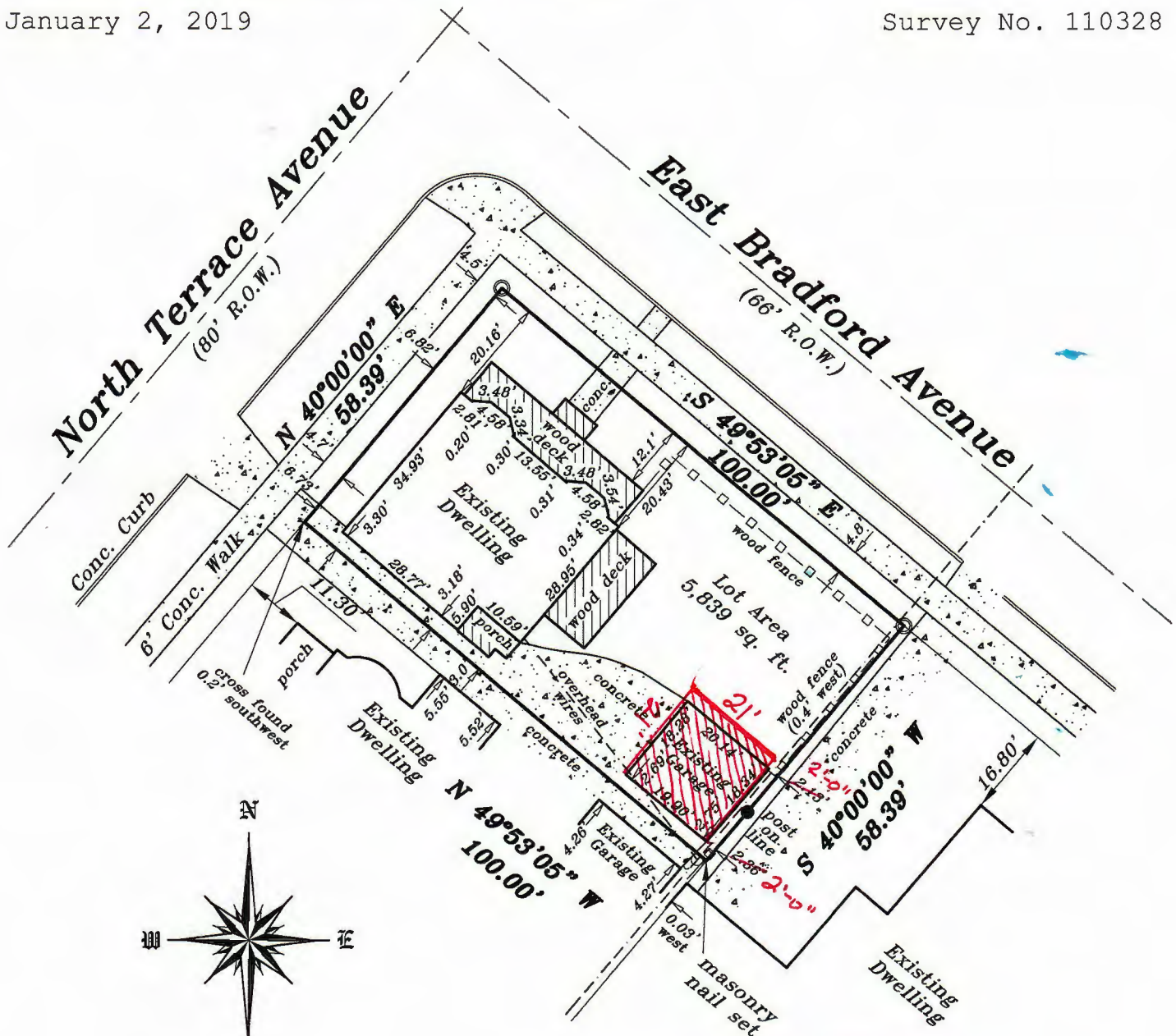
LOCATION: 2803 East Bradford Avenue, Milwaukee, Wisconsin

LEGAL DESCRIPTION:

The Northwesternly 100 feet of Lot 61 in Block 2, in **GILMAN'S SUBDIVISION** of Lot 1; Lots 1 to 16 inclusive, in Block 2; Lots 1 to 8, 10 to 20, in Block 3; Lots 1 to 11, 14 to 16, in Block 4; Lots 1 to 10, in Block 5; Lots 1, 2 and 3, in Block 6, in Lockwood's Addition in the West 1/2 of the Southeast 1/4 of Section 15, Town 7 North, Range 22 East, in the City of Milwaukee, Milwaukee County, Wisconsin.

January 2, 2019

Survey No. 110328



GRAPHIC SCALE

