

STEPHEN PERRY SMITH
ARCHITECTS

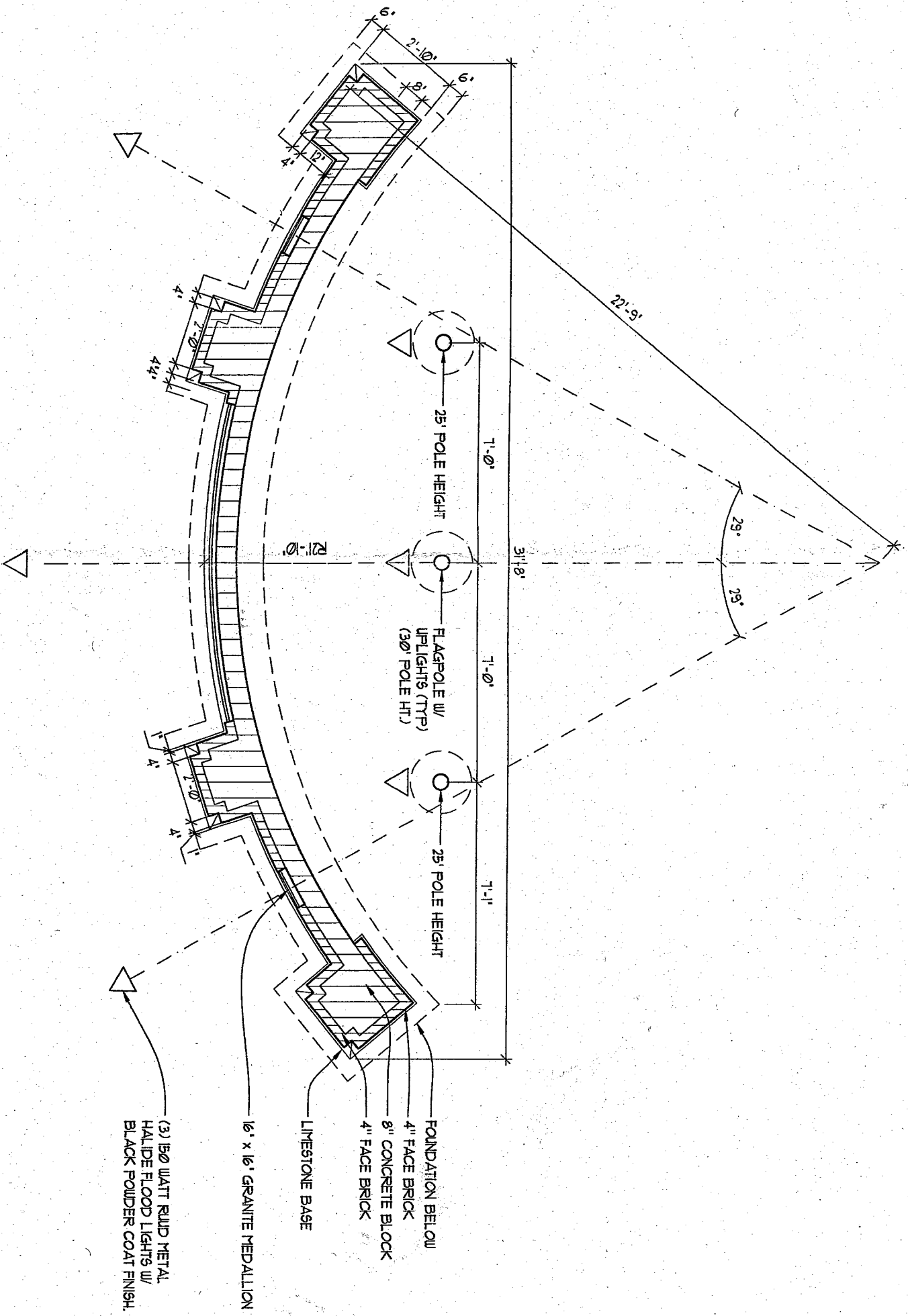
1435 N. CEDARBURG ROAD
MILWAUKEE, WISCONSIN 53097
PH: 262-376-1579 FAX: 262-376-1584

PARK IDENTIFICATION SIGN AT WEST ENTRANCE:

LIBERTY AT PARK PLACE
MILWAUKEE, WISCONSIN

1 PARK IDENTIFICATION SIGN PLAN
N/A

SCALE: 1/4" = 1'-0"



INFORMATION

PROJECT ARCHITECT

DRAWN BY

PROJECT NUMBER

DATE

SRS

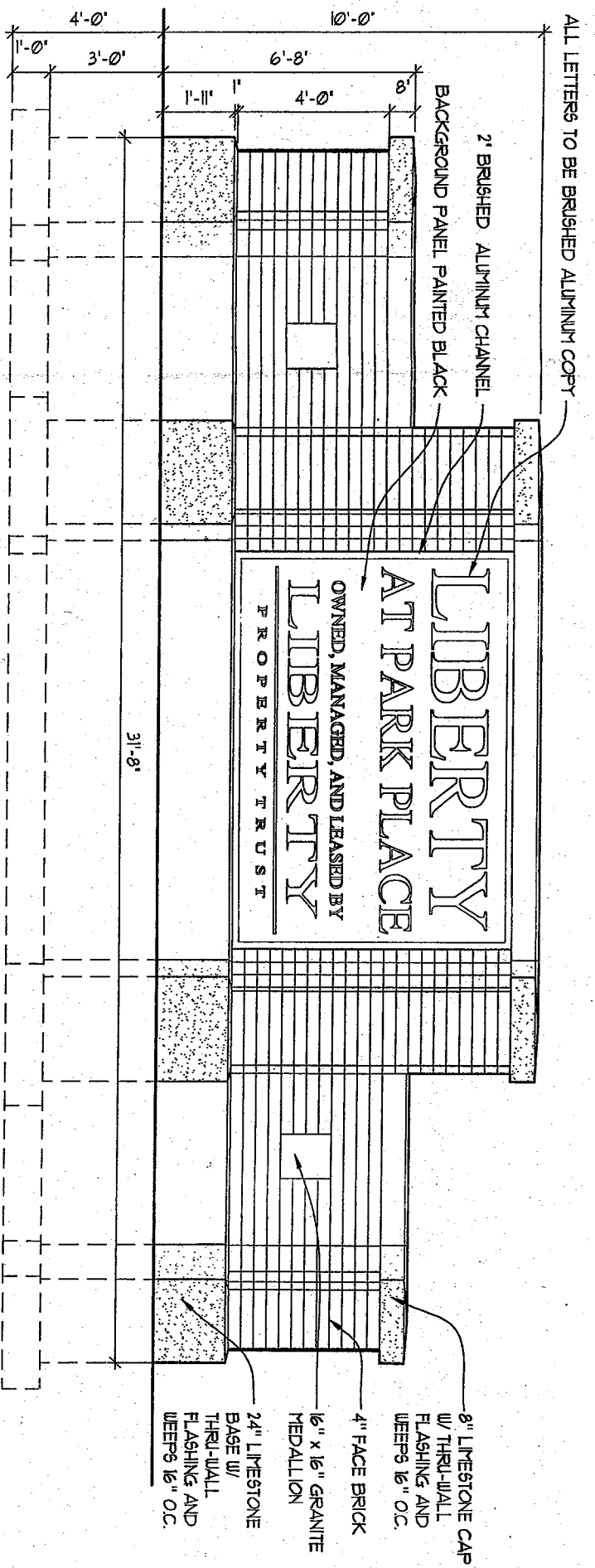
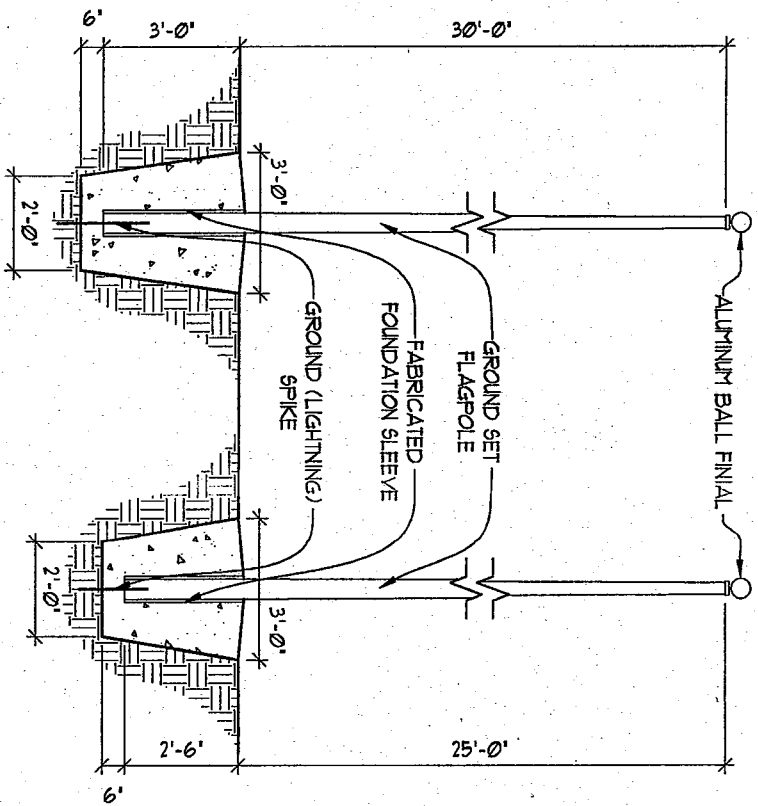
RRS

LPT-00-525

10/9/00

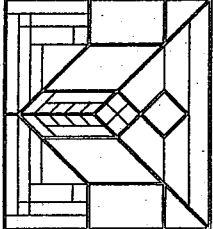
SHEET NO.

5 OF 10



NOTE: VERIFY FONT STYLE & SIZE W/OJNER
ALL LETTERS TO BE BRUSHED ALUMINUM COPY

1 PARK IDENTIFICATION SIGN ELEVATION
SCALE: 1/4"=1'-0"
N/A



STEPHEN PERRY SMITH
ARCHITECTS

1435 N. CEDARBURG ROAD
MILWAUKEE, WISCONSIN 53097
PH: 262-376-1579 FAX: 262-376-1884

PARK IDENTIFICATION SIGN AT WEST ENTRANCE:

LIBERTY AT PARK PLACE
MILWAUKEE, WISCONSIN

INFORMATION SHEET NO.

PROJECT ARCHITECT

SFS

DRAWN BY

RIS

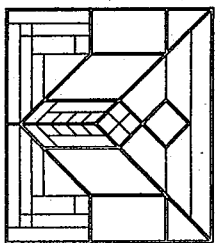
PROJECT NUMBER

LPT-00-525

DATE

10/9/00

6 OF 10

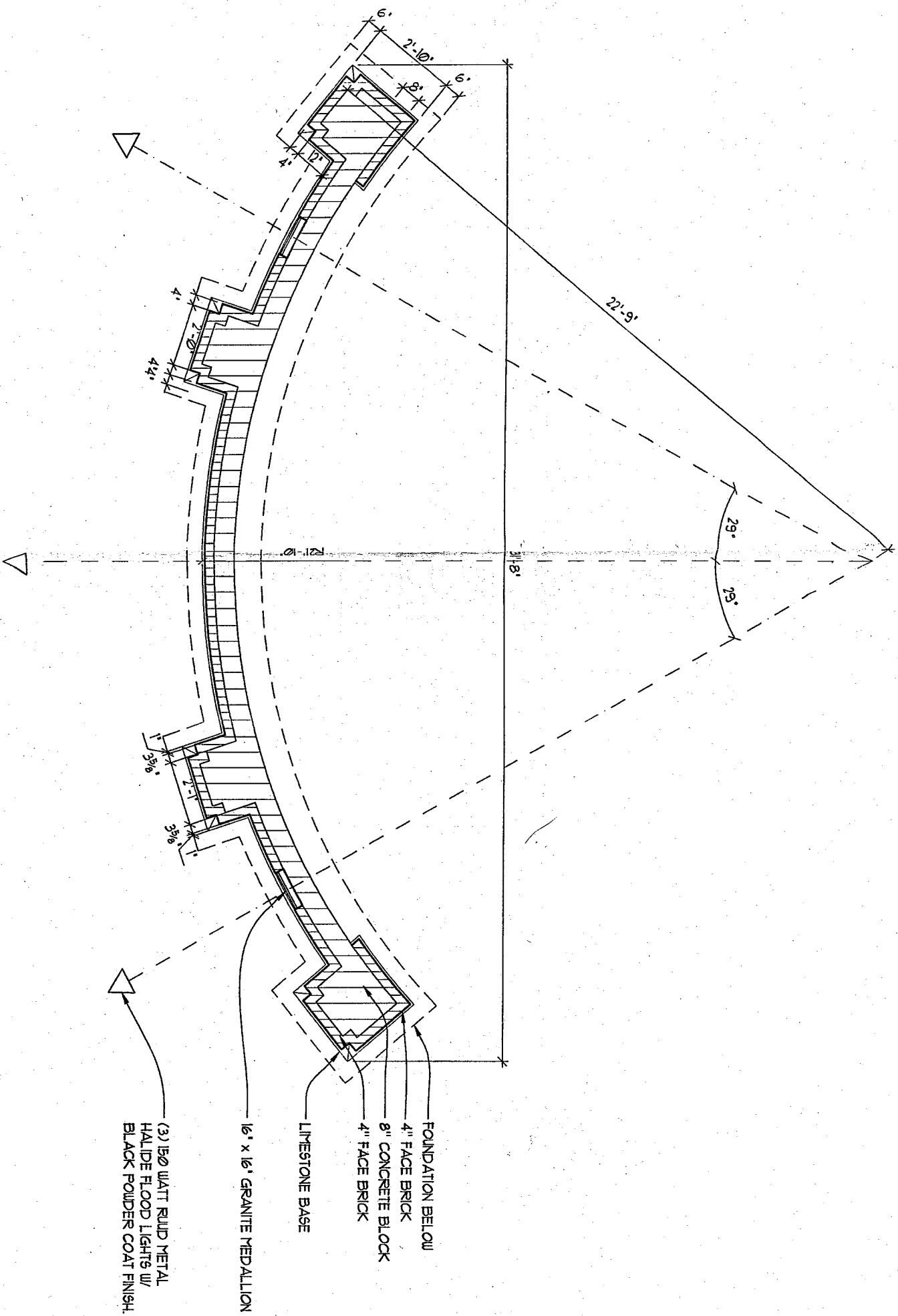


STEPHEN PERRY SMITH
ARCHITECTS

1435 N. CEDARBURG ROAD
MILWAUKEE, WISCONSIN 53097
PH: 262-376-1579 FAX: 262-376-1584

**MONUMENT AT WEST ENTRANCE:
LIBERTY AT PARK PLACE
MILWAUKEE, WISCONSIN**

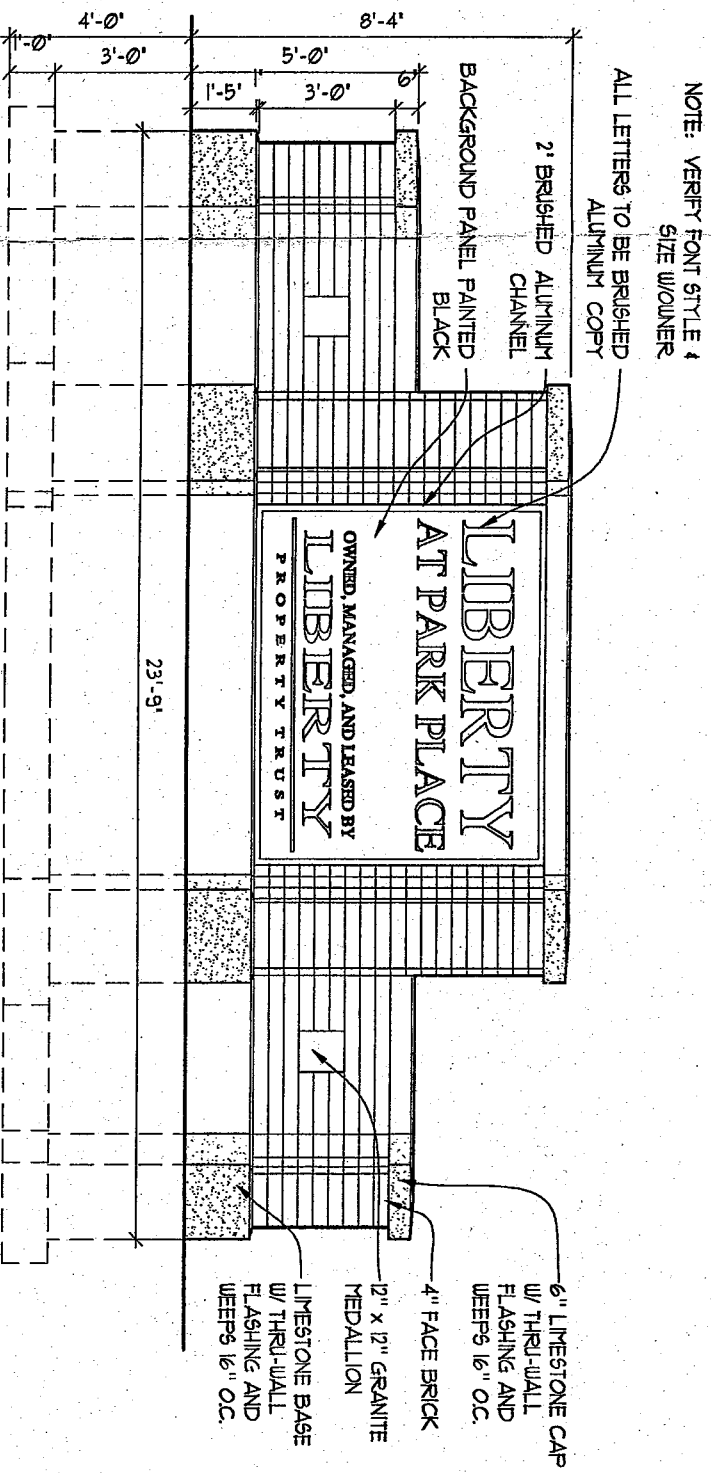
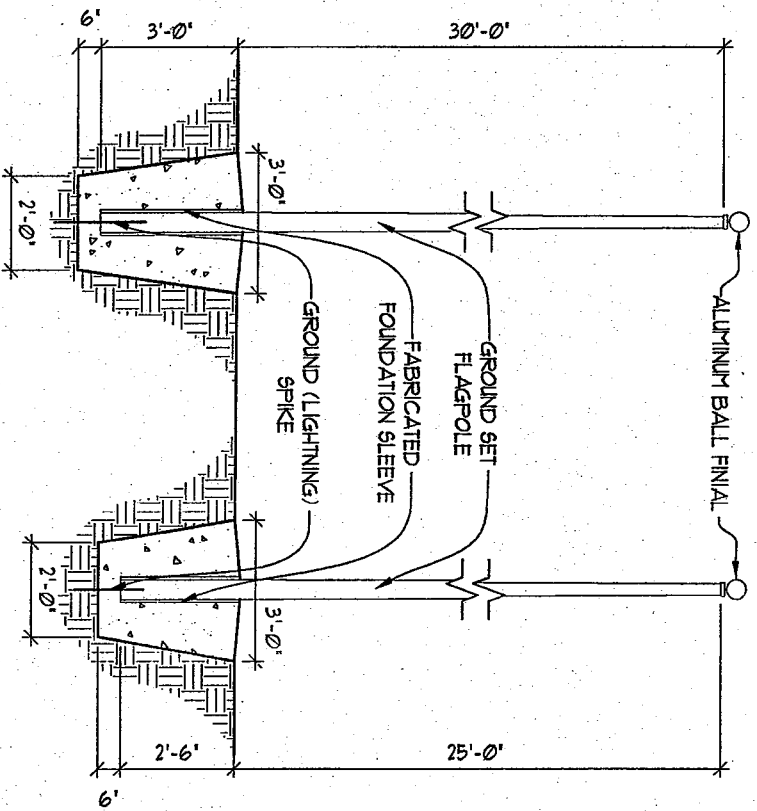
INFORMATION		SHEET NO.
PROJECT ARCHITECT	SPS	7 OF 10
DRAWN BY	RRS	
PROJECT NUMBER	LPT-00-525	
DATE	10/9/00	



1 MONUMENT PLAN
N/A

SCALE: 1/4"=1'-0"





NOTE: VERIFY FONT STYLE & SIZE W/OWNER
ALL LETTERS TO BE BRUSHED ALUMINUM COPY

1 PARK IDENTIFICATION SIGN ELEVATION
SCALE: 1/4"=1'-0"

STEPHEN PERRY SMITH
ARCHITECTS

1435 N. CEDARBURG ROAD
MILWAUKEE, WISCONSIN 53097
PH: 262-376-1579 FAX: 262-376-1584

PARK IDENTIFICATION SIGN AT EAST ENTRANCE:

LIBERTY AT PARK PLACE
MILWAUKEE, WISCONSIN

INFORMATION

PROJECT ARCHITECT

SPS

DRAWN BY

RRS

PROJECT NUMBER

LPT-00-525

DATE

10/9/00

SHEET NO.

10 OF 10