





UTILITY / GOVERNMENTAL CONTACT LIST

**ZONING:**  
 841 N. BROADWAY  
 MILWAUKEE, WI 53202-3516  
 (414) 288-8210 (PHONE)

**PLANNING REQUIREMENTS:**  
 809 N. BROADWAY  
 MILWAUKEE, WI 53202-3516  
 (414) 288-6076

**STORMWATER:**  
 841 N. BROADWAY  
 MILWAUKEE, WI 53202-3516  
 (414) 288-2463

**SANITARY HORIZON SUPERVISOR:**  
 841 N. BROADWAY  
 MILWAUKEE, WI 53202-3516  
 (414) 288-0311

**TELEPHONE:**  
 AMERICAN TELETYPE  
 7721 W. FOND DU LAC, 1ST FLOOR  
 MILWAUKEE, WI 53218  
 (414) 333-7404

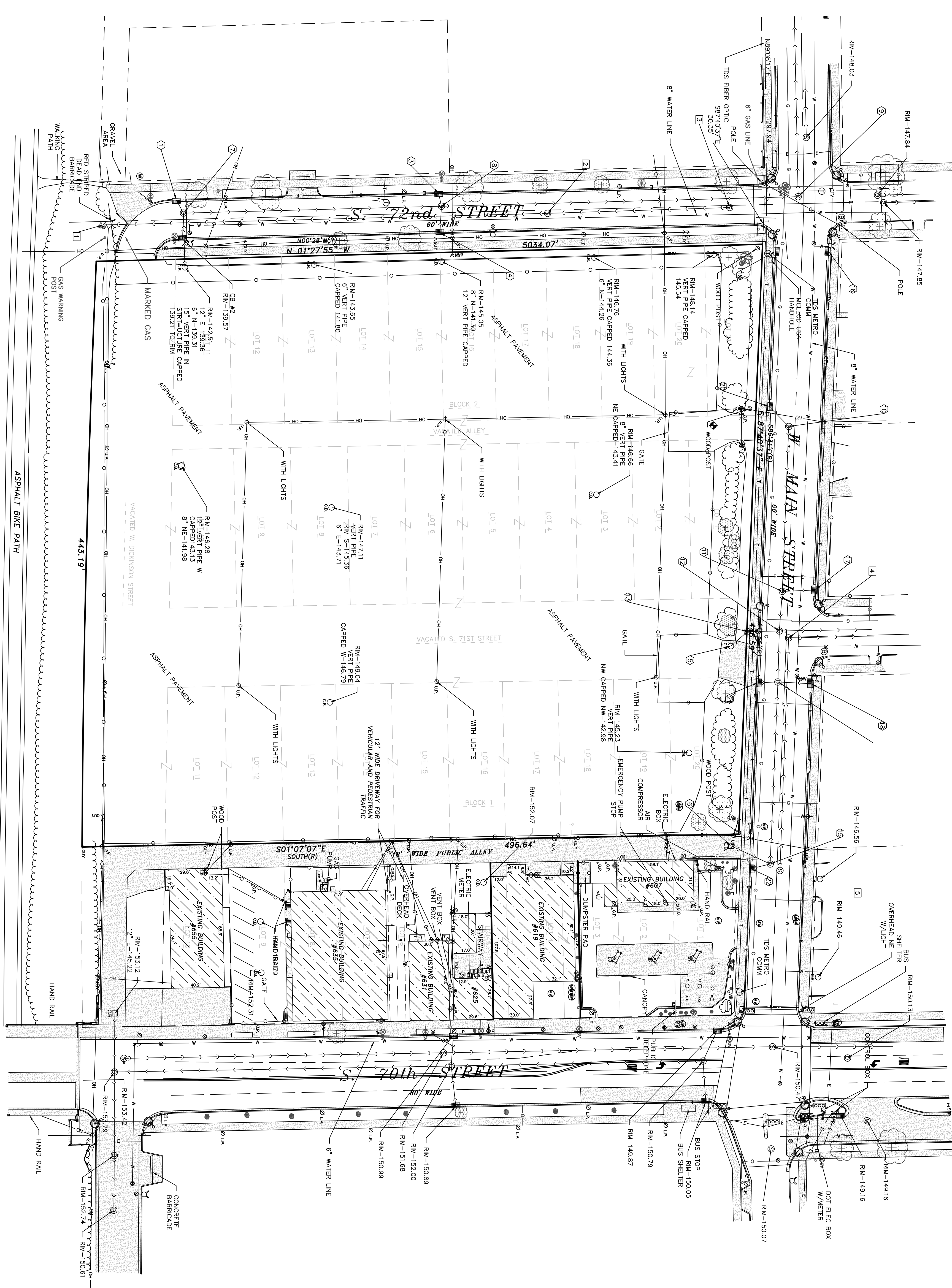
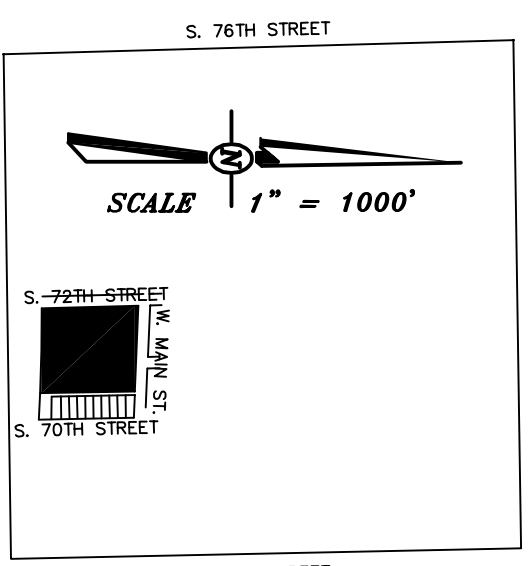
**BUILDING CODE:**  
 841 N. BROADWAY  
 MILWAUKEE, WI 53202-3516  
 (414) 288-8210 (PHONE)

**CITY ENGINEER:**  
 841 N. BROADWAY  
 MILWAUKEE, WI 53202-3516  
 (414) 288-2400

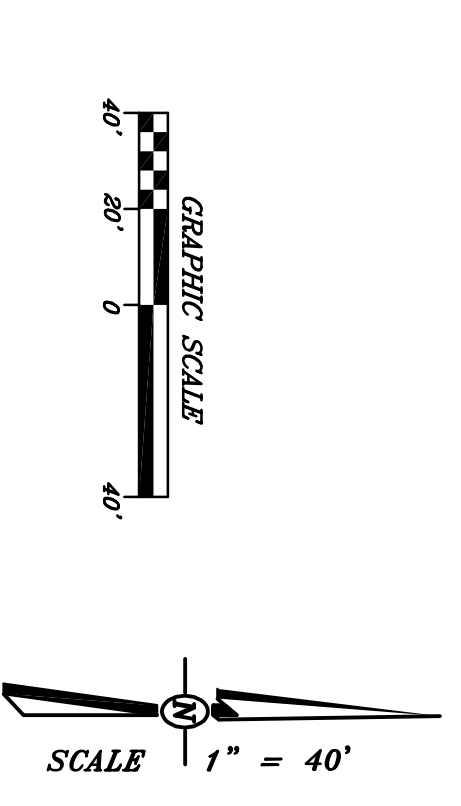
**WATER:**  
 MARK SCHELLAR  
 841 N. BROADWAY  
 MILWAUKEE, WI 53202-3516  
 (414) 288-2427

**NATURAL GAS:**  
 3100 W. NORTH AVENUE  
 MILWAUKEE, WI 53208  
 (414) 448-3002

**ELECTRIC SERVICES:**  
 3100 W. NORTH AVENUE  
 MILWAUKEE, WI 53270  
 (414) 326-0000

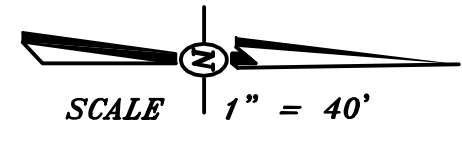
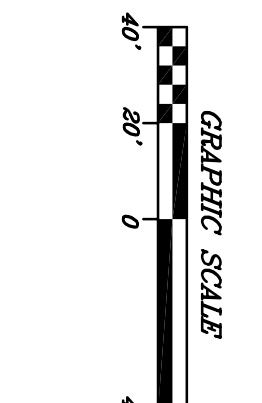
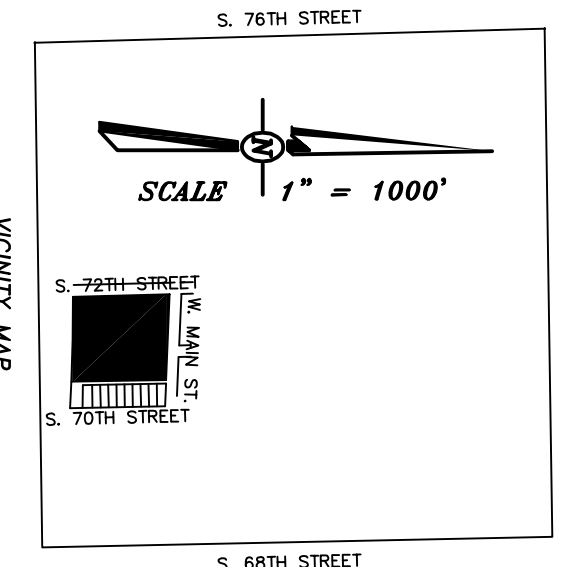
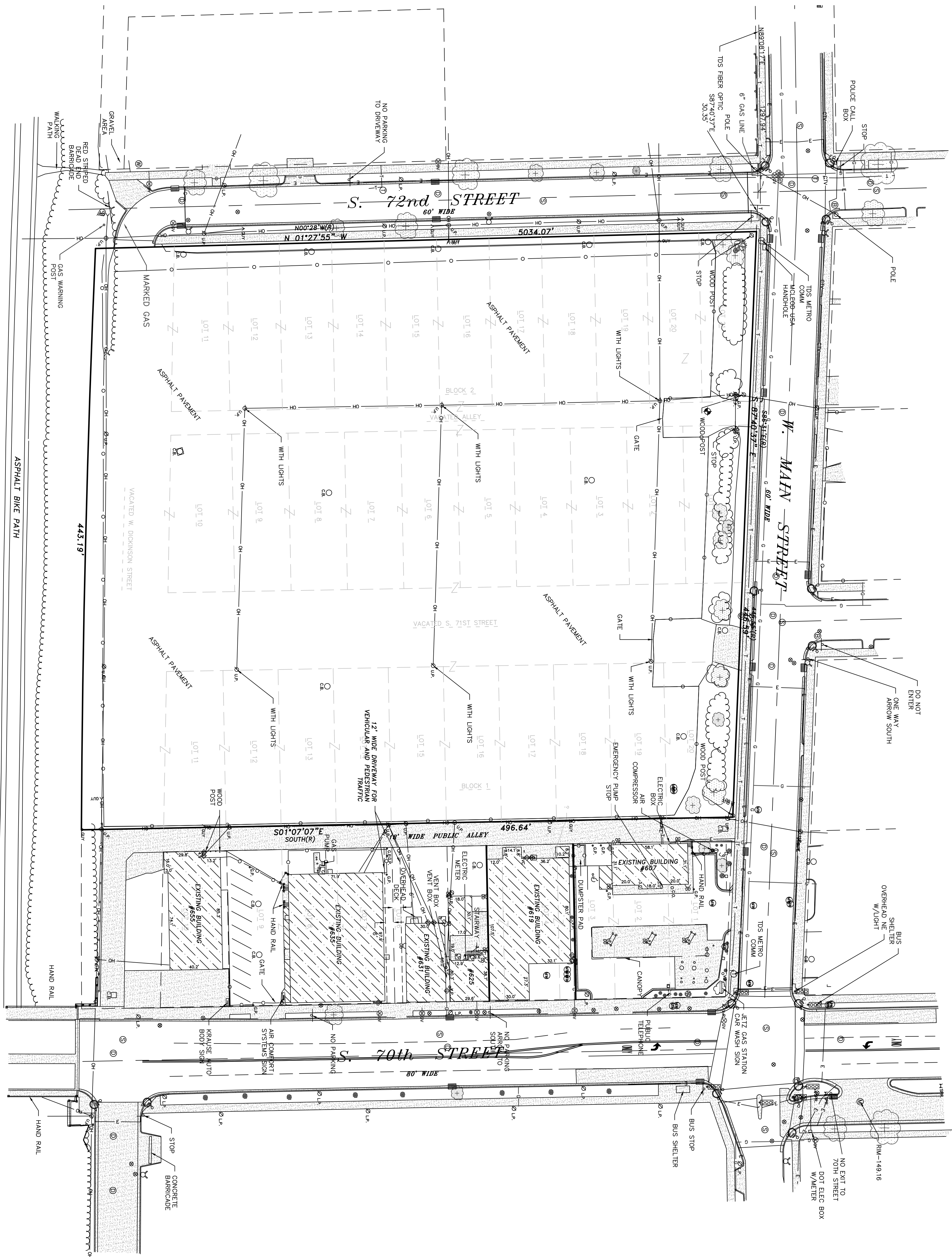


- STORM SEWER LEGEND**
- ① INLET
  - ② INLET
  - ③ INLET
  - ④ INLET
  - ⑤ INLET
  - ⑥ INLET
  - ⑦ INLET
  - ⑧ INLET
  - ⑨ INLET
  - ⑩ INLET
  - ⑪ INLET
  - ⑫ INLET
  - ⑬ INLET
  - ⑭ INLET
  - ⑮ INLET
  - ⑯ INLET
  - ⑰ INLET
  - ⑱ INLET
  - ⑲ INLET
  - ⑳ INLET
  - ㉑ INLET
  - ㉒ INLET
  - ㉓ INLET
  - ㉔ INLET
  - ㉕ INLET
  - ㉖ INLET
  - ㉗ INLET
  - ㉘ INLET
  - ㉙ INLET
  - ㉚ INLET
  - ㉛ INLET
  - ㉜ INLET
  - ㉝ INLET
  - ㉞ INLET
  - ㉟ INLET
  - ㊱ INLET
  - ㊲ INLET
  - ㊳ INLET
  - ㊴ INLET
  - ㊵ INLET
  - ㊶ INLET
  - ㊷ INLET
  - ㊸ INLET
  - ㊹ INLET
  - ㊺ INLET
  - ㊻ INLET
  - ㊼ INLET
  - ㊽ INLET
  - ㊾ INLET
  - ㊿ INLET
  - ① STORM MANHOLE #1
  - ② STORM MANHOLE #2
  - ③ STORM MANHOLE #3
  - ④ STORM MANHOLE #4
  - ⑤ STORM MANHOLE #5
  - ⑥ STORM MANHOLE #6
  - ⑦ STORM MANHOLE #7
  - ⑧ STORM MANHOLE #8
  - ⑨ STORM MANHOLE #9
  - ⑩ STORM MANHOLE #10
  - ⑪ STORM MANHOLE #11
  - ⑫ STORM MANHOLE #12
  - ⑬ STORM MANHOLE #13
  - ⑭ STORM MANHOLE #14
  - ⑮ STORM MANHOLE #15
  - ⑯ STORM MANHOLE #16
  - ⑰ STORM MANHOLE #17
  - ⑱ STORM MANHOLE #18
  - ⑲ STORM MANHOLE #19
  - ⑳ STORM MANHOLE #20
  - ㉑ STORM MANHOLE #21
  - ㉒ STORM MANHOLE #22
  - ㉓ STORM MANHOLE #23
  - ㉔ STORM MANHOLE #24
  - ㉕ STORM MANHOLE #25
  - ㉖ STORM MANHOLE #26
  - ㉗ STORM MANHOLE #27
  - ㉘ STORM MANHOLE #28
  - ㉙ STORM MANHOLE #29
  - ㉚ STORM MANHOLE #30
  - ㉛ STORM MANHOLE #31
  - ㉜ STORM MANHOLE #32
  - ㉝ STORM MANHOLE #33
  - ㉞ STORM MANHOLE #34
  - ㉟ STORM MANHOLE #35
  - ㊱ STORM MANHOLE #36
  - ㊲ STORM MANHOLE #37
  - ㊳ STORM MANHOLE #38
  - ㊴ STORM MANHOLE #39
  - ㊵ STORM MANHOLE #40
  - ㊶ STORM MANHOLE #41
  - ㊷ STORM MANHOLE #42
  - ㊸ STORM MANHOLE #43
  - ㊹ STORM MANHOLE #44
  - ㊺ STORM MANHOLE #45
  - ㊻ STORM MANHOLE #46
  - ㊼ STORM MANHOLE #47
  - ㊽ STORM MANHOLE #48
  - ㊾ STORM MANHOLE #49
  - ㊿ STORM MANHOLE #50
- SANITARY SEWER LEGEND**
- ① SANITARY MANHOLE #1
  - ② SANITARY MANHOLE #2
  - ③ SANITARY MANHOLE #3
  - ④ SANITARY MANHOLE #4
  - ⑤ SANITARY MANHOLE #5
  - ⑥ SANITARY MANHOLE #6
  - ⑦ SANITARY MANHOLE #7
  - ⑧ SANITARY MANHOLE #8
  - ⑨ SANITARY MANHOLE #9
  - ⑩ SANITARY MANHOLE #10
  - ⑪ SANITARY MANHOLE #11
  - ⑫ SANITARY MANHOLE #12
  - ⑬ SANITARY MANHOLE #13
  - ⑭ SANITARY MANHOLE #14
  - ⑮ SANITARY MANHOLE #15
  - ⑯ SANITARY MANHOLE #16
  - ⑰ SANITARY MANHOLE #17
  - ⑱ SANITARY MANHOLE #18
  - ⑲ SANITARY MANHOLE #19
  - ⑳ SANITARY MANHOLE #20
  - ㉑ SANITARY MANHOLE #21
  - ㉒ SANITARY MANHOLE #22
  - ㉓ SANITARY MANHOLE #23
  - ㉔ SANITARY MANHOLE #24
  - ㉕ SANITARY MANHOLE #25
  - ㉖ SANITARY MANHOLE #26
  - ㉗ SANITARY MANHOLE #27
  - ㉘ SANITARY MANHOLE #28
  - ㉙ SANITARY MANHOLE #29
  - ㉚ SANITARY MANHOLE #30
  - ㉛ SANITARY MANHOLE #31
  - ㉜ SANITARY MANHOLE #32
  - ㉝ SANITARY MANHOLE #33
  - ㉞ SANITARY MANHOLE #34
  - ㉟ SANITARY MANHOLE #35
  - ㊱ SANITARY MANHOLE #36
  - ㊲ SANITARY MANHOLE #37
  - ㊳ SANITARY MANHOLE #38
  - ㊴ SANITARY MANHOLE #39
  - ㊵ SANITARY MANHOLE #40
  - ㊶ SANITARY MANHOLE #41
  - ㊷ SANITARY MANHOLE #42
  - ㊸ SANITARY MANHOLE #43
  - ㊹ SANITARY MANHOLE #44
  - ㊺ SANITARY MANHOLE #45
  - ㊻ SANITARY MANHOLE #46
  - ㊼ SANITARY MANHOLE #47
  - ㊽ SANITARY MANHOLE #48
  - ㊾ SANITARY MANHOLE #49
  - ㊿ SANITARY MANHOLE #50



UTILITY DETAIL





COPYRIGHT © 2011, BY McCLURE ENGINEERING ASSOCIATES, INC. ALL RIGHTS RESERVED. NO PART OF THIS DRAWING MAY BE REPRODUCED OR TRANSMITTED IN ANY FORM OR BY ANY MEANS, ELECTRONIC OR MECHANICAL, INCLUDING PHOTOCOPYING, RECORDING, OR BY ANY INFORMATION STORAGE AND RETRIEVAL SYSTEM, WITHOUT THE WRITTEN PERMISSION OF McCLURE ENGINEERING ASSOCIATES, INC.

**EASEMENT, SETBACKS, SIGN, LIGHT POLE AND BORING DETAIL**

REVISIONS		
NO.	ITEM	DATE

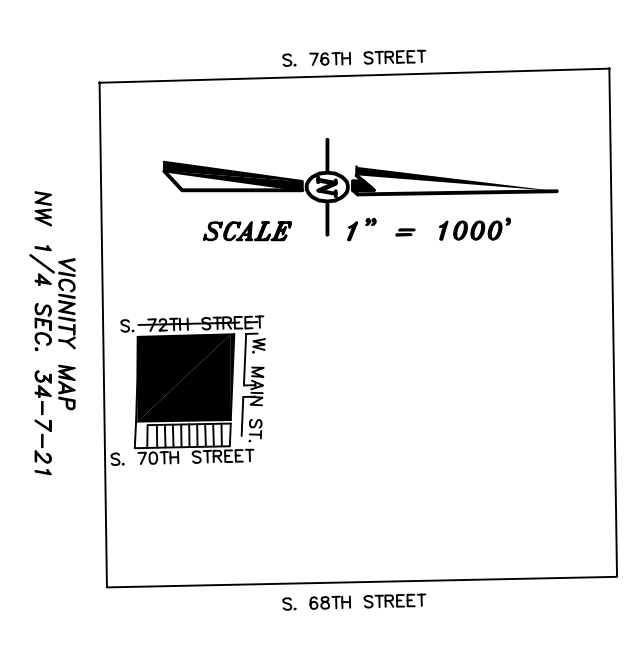
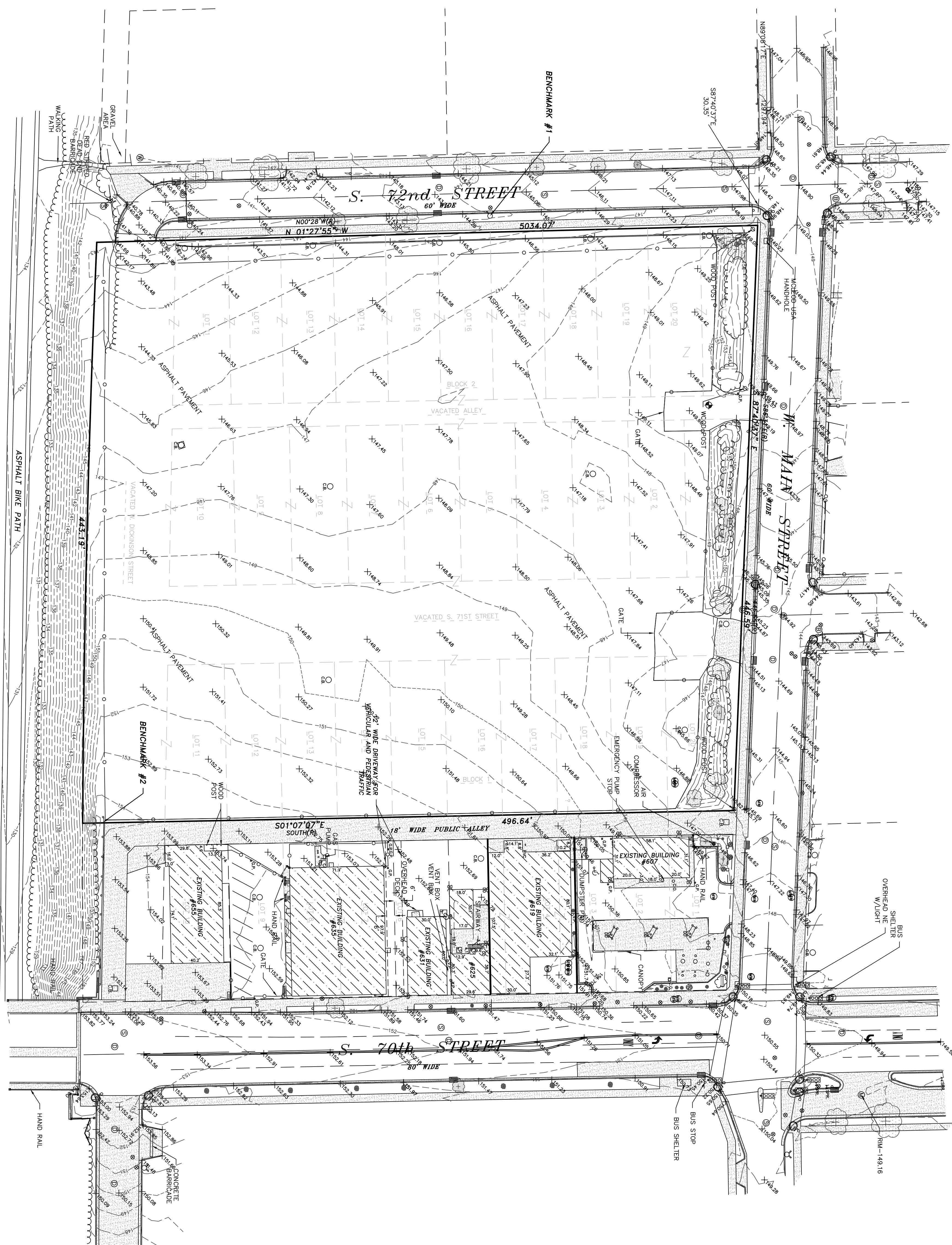
PLOTTING SCALE: **1" = 60'**  
 DESIGNED BY:  
 DRAWN BY: **MDN**  
 CHECKED BY: **MDN**  
 DATE: **JANUARY 12, 2011**



**McClure**  
 Engineering Associates, Inc.  
 5417 North 118th Court  
 Milwaukee, Wisconsin 53225  
 (414) 616-4888 FAX: (414) 616-4885

**ALTA/ACSM LAND TITLE SURVEY**  
**GATLIN DEVELOPMENT COMPANY**  
 City of Milwaukee Milwaukee County, Wisconsin  
 FILE NAME: T:\LAND PROJECTS\10104 MLW 70TH STREET\DWG\101041.DWG JOB NUMBER: 08-15-10-091





SCALE 1" = 40'

**BENCHMARKS**

- REFERENCE BENCHMARK:  
 BM 1 SQUARE CORNER OF THE NORTHWEST 1/4 OF SECTION 34-7-21, ALONG S. 76TH STREET, 684 SOUTH OF W. MAIN STREET, CONCRETE MONUMENT WITH BRASS CAP, ELEV. 129.89 CITY OF MILWAUKEE DATUM.  
 PROJECT BENCHMARKS:  
 BM#1 BURY TAG AT THE NORTHEAST CORNER OF FIRE HYDRANT, ON THE EAST SIDE OF S. 72ND STREET 204, SOUTH OF MAIN STREET, ELEV. = 146.29 CITY OF MILWAUKEE DATUM.  
 BM#2 RAIL ROAD SPIKE NORTH FACE OF UTILITY POLE SOUTHEAST CORNER OF SITE, 136 STREET, ELEV. = 156.47 CITY OF MILWAUKEE DATUM.

**TOPOGRAPHY DETAIL**

Copyright © 2011, by McClure Engineering Associates, Inc. All rights reserved. No part of this drawing may be reproduced or transmitted in any form or by any means, electronic or mechanical, including photocopying, recording, or by any information storage and retrieval system, without the prior written permission of McClure Engineering Associates, Inc.

**ALTA/ACSM LAND TITLE SURVEY**  
**GATLIN DEVELOPMENT COMPANY**  
 City of Milwaukee Milwaukee County, Wisconsin  
 FILE NAME: I:\LAND PROJECTS\10104 MLN 70th STREET\DWG\101041.DWG JOB NUMBER: 08-15-10-091

**McClure**  
 Engineering Associates, Inc.  
 5417 North 118th Court Milwaukee, Wisconsin 53225  
 (414) 616-4888 FAX: (414) 616-4885

**Walmart**

PLOTTING SCALE: 1" = 60'  
 DESIGNED BY:  
 DRAWN BY: **MDN**  
 CHECKED BY: **MDN**  
 DATE: **JANUARY 12, 2011**

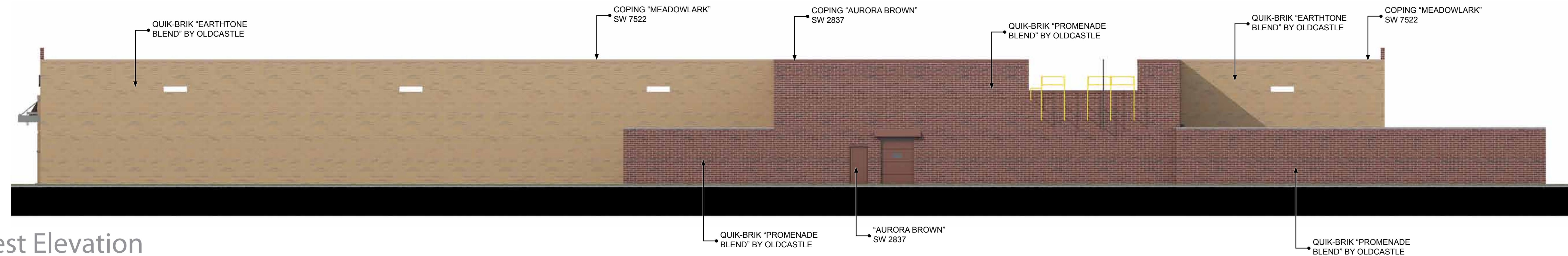
REVISIONS		
NO.	ITEM	DATE

SHEET NO.  
**4 of 4**  
 08-15-10-104





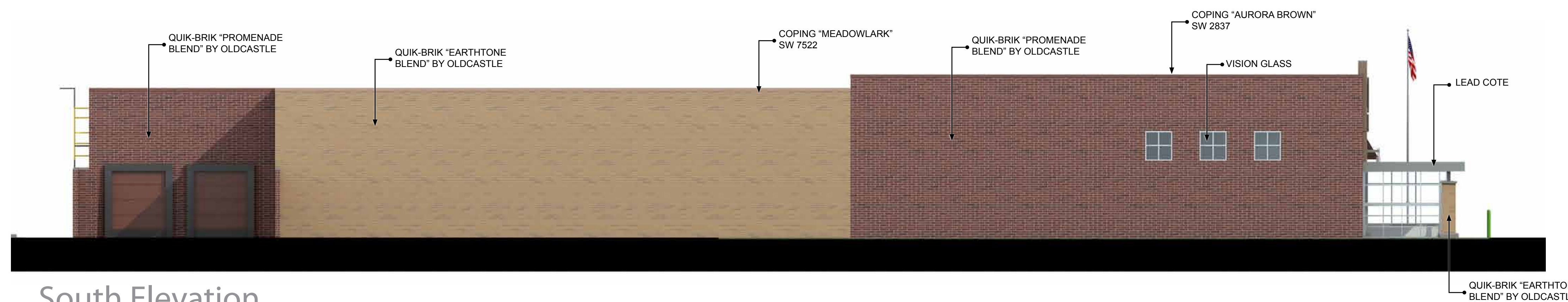
East Elevation



West Elevation



North Elevation



South Elevation

Sign	Qty	Height	Sq.Ft	Total Sq.Ft
<b>Walmart Market</b>	1	3'-6" 2'-6"	189.84	189.84
<b>Pharmacy</b>	1	2'-0"	33.48	33.48
<b>Drive-Thru</b>	1	1'-6"	21.04	21.04
<b>Pharmacy Drive-Thru</b>	1	1'-6"	39.88	39.88
				<b>284.24</b>



DESIGN REPRESENTATION ONLY - NOT FOR CONSTRUCTION The building images shown are a representation of the current design intent only. The building images may not reflect variations in color, tone, hue, tint, shading, ambient light intensity, materials, texture, contrast, font style, construction variations required by building codes or inspectors, material availability or final design detailing.





May 10, 2011

Milwaukee, WI - WM #5697

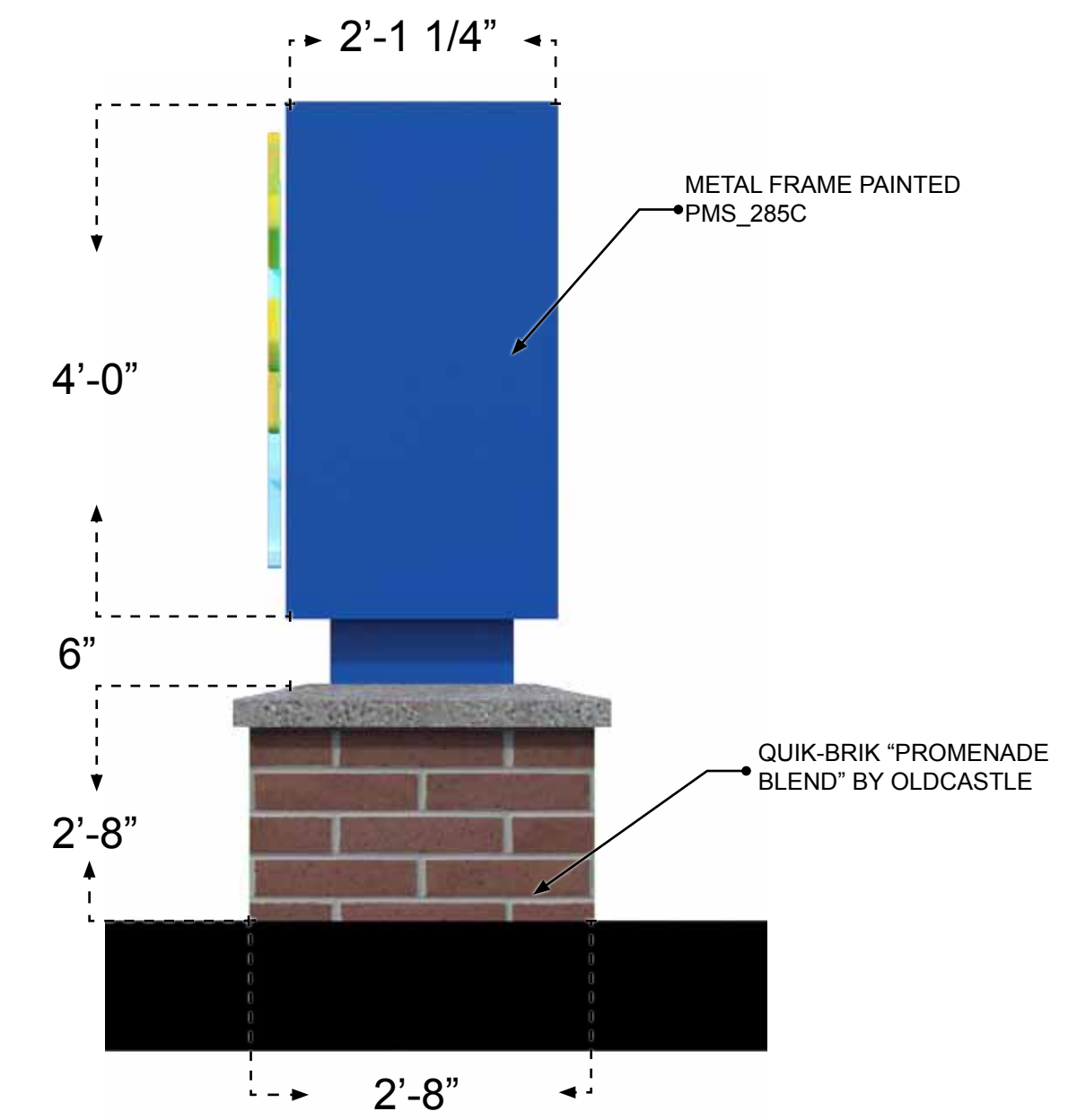
Perspectives

2





Front Elevation

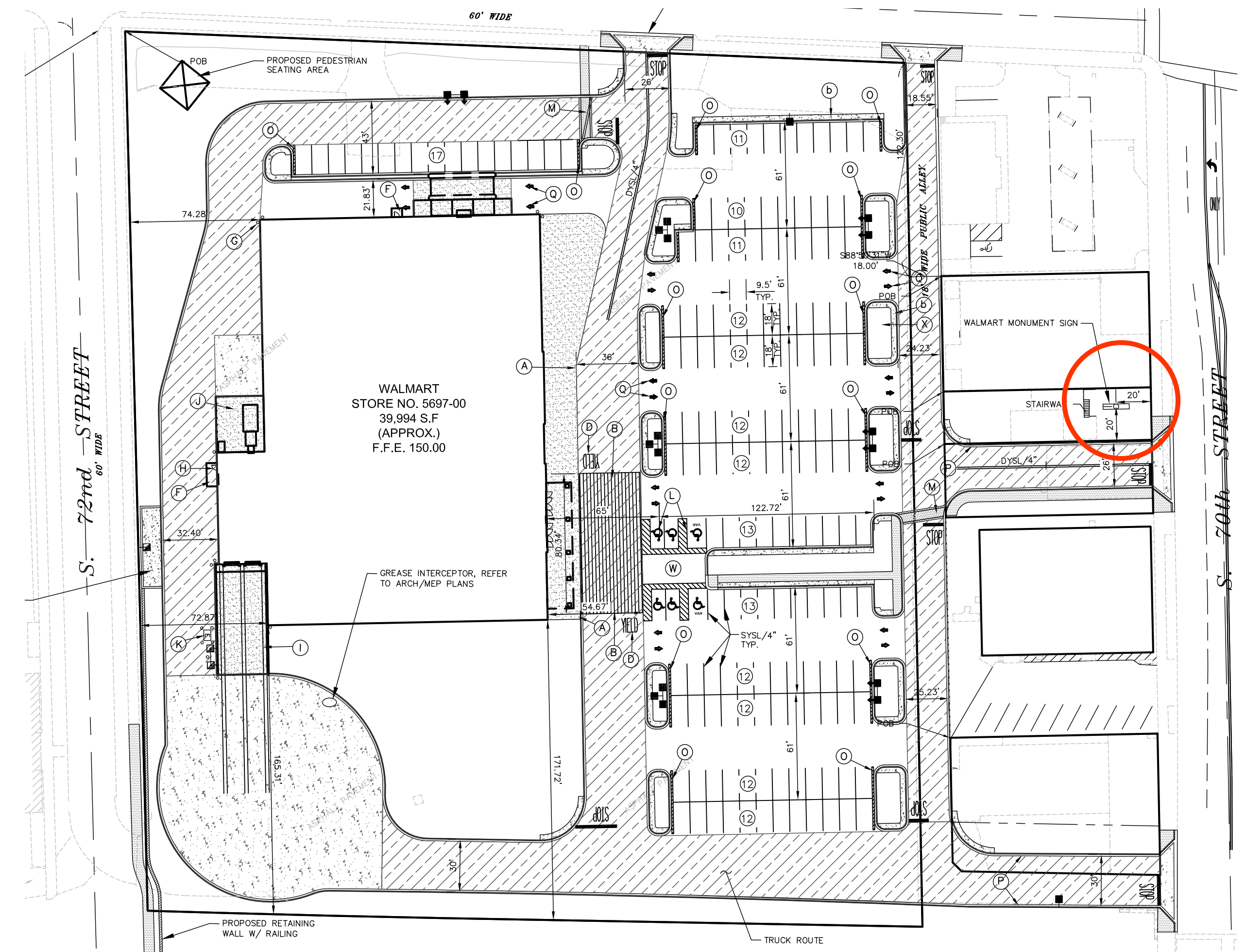


Side Elevation



Perspective

SIGNAGE AREA: 60 S.F.



Monument Sign Location



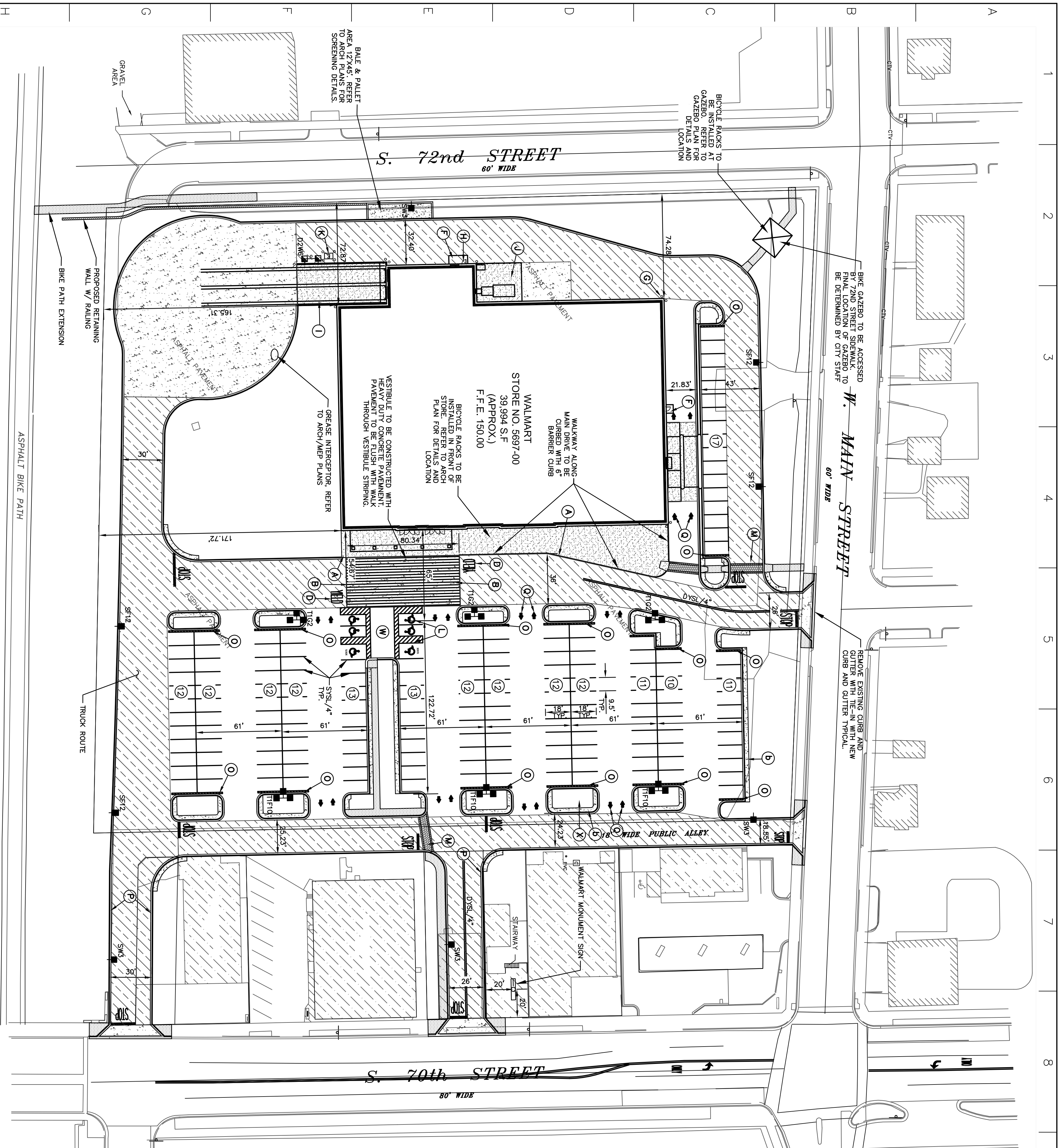
May 10, 2011

Milwaukee, WI - WM #5697

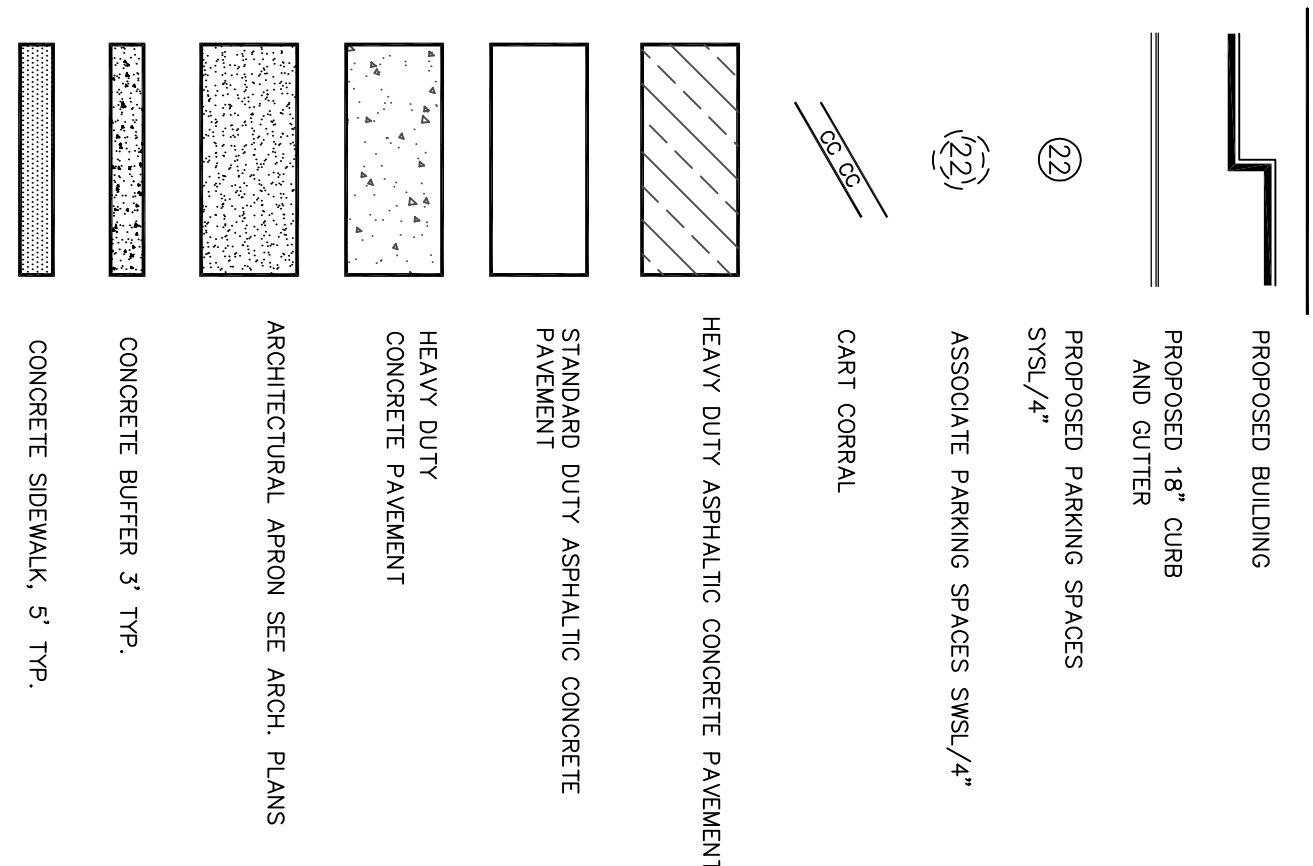
Monument Sign

3





**LEGEND**



**SITE NOTES**

- ALL WORK AND MATERIALS SHALL COMPLY WITH ALL CITY/COUNTY REGULATIONS AND CODES AND OSHA STANDARDS.
- CONTRACTOR SHALL REFER TO THE ARCHITECTURAL PLANS FOR EXACT LOCATIONS AND DIMENSIONS OF VESTIBLES, STAIRS, SIDEWALKS, EXIT PORCHES, ENTRANCE LOCATIONS.
- ALL DISTURBED AREAS ARE TO RECEIVE FOUR INCHES OF TOPSOIL, SEED, MULCH AND WATER UNTIL A HEALTHY STAND OF GRASS IS ESTABLISHED. SEE 02300 SPECIFICATION.
- ALL CURBED RADIUS ARE TO BE 10' UNLESS OTHERWISE NOTED. STRIPPED RADIUS ARE TO BE 5'.
- ALL DIMENSIONS AND RADIUS ARE TO THE FACE OF CURB UNLESS OTHERWISE NOTED.
- EXISTING STRUCTURES WITHIN CONSTRUCTION LIMITS ARE TO BE ABANDONED. REMOVED OR RELOCATED AS NECESSARY. ALL COST SHALL BE INCLUDED IN BASE BID.
- CONTRACTOR SHALL BE RESPONSIBLE FOR ALL RELOCATIONS, (UNLESS OTHERWISE NOTED ON PLANS) INCLUDING BUT NOT LIMITED TO, ALL UTILITIES, STORM DRAINAGE, SIGNS, TRAFFIC SIGNALS & POLES, ETC. AS REQUIRED. ALL WORK SHALL BE IN ACCORDANCE WITH THE CITY OF MILWAUKEE SPECIFICATIONS. ALL WORK SHALL BE IN ACCORDANCE WITH THE CITY OF MILWAUKEE SPECIFICATIONS. ALL COST SHALL BE INCLUDED IN BASE BID.
- SITE BOUNDARY, TOPOGRAPHY, UTILITY AND ROAD INFORMATION TAKEN FROM A SURVEY BY A LAND SURVEYOR.
- NO WETLANDS WERE PRESENT ON THIS SITE PER WETLAND DETERMINATION CONDUCTED BY RA SMITH NATIONAL DATED DECEMBER 2010.
- THE SITE WORK FOR THIS PROJECT SHALL MEET OR EXCEED THE SITE SPECIFIC SPECIFICATIONS.
- MONUMENT SIGNS SHALL BE CONSTRUCTED BY OTHERS.
- REFER TO ARCH. PLANS FOR SITE LIGHTING ELECTRICAL PLAN.
- ALL WM GENERAL CONTRACTOR WORK TO BE COMPLETED (EARTHWORK, FINAL UTILITIES, AND FINAL GRADING) BY THE MILESTONE DATE IN PROJECT DOCUMENTS. OUTLOT AREA TO BE KEPT FREE OF OBSTRUCTIONS THROUGHOUT THE CONSTRUCTION PERIOD. THE CONTRACTOR SHALL BE RESPONSIBLE FOR THE PROTECTION OF ALL UTILITIES, STORM DRAINAGE, SIGNS, TRAFFIC SIGNALS & POLES, ETC. AS REQUIRED. ALL WORK SHALL BE IN ACCORDANCE WITH THE CITY OF MILWAUKEE SPECIFICATIONS. ALL COST SHALL BE INCLUDED IN BASE BID. PURCHASER OF OUTLOT TO PROVIDE PERMIT DOCUMENTS AND SWPPP REQUIRED BY STATE/LOCAL REQUIREMENTS FOR SPECIFIC OUTLOT.
- FINAL SITE LIGHTING FIXTURES AND LOCATIONS TO BE COORDINATED WITH AND APPROVED BY CITY OF MILWAUKEE STAFF.

**LIGHT LEGEND**

SYMBOL	QTY	LABEL	DESCRIPTION
■	4	SF12	1-E-AM15M4F57A4GBLCKF
■	4	SM6	1-E-AM15M4F57A4GBLCKF
■	1	D2M6	1-E-AM15M4F57A4GBLCKF
■	3	TF10	3-E-AM15M4F57A4GBLCKF
■	3	TF62	1-E-AM15M4F57A4GBLCKF 2-E-AM15M4F57A4GBLCKF

NOTE: ALL LUMINAIRES HAVE A MOUNTING HEIGHT OF 28 FT (25 FT POLE/3 FT BASE).

**PAINTING STRIPING LEGEND**

- SM6L/4" - SINGLE WHITE SOLID LINE / 4" WIDE
- SYSL/4" - SINGLE YELLOW SOLID LINE / 4" WIDE EACH
- DYSL/4" - DOUBLE YELLOW SOLID LINE / 4" WIDE EACH
- SYSL/10" - SINGLE YELLOW SOLID LINE / 10" WIDE
- SM1L/4" - SINGLE WHITE DASHED LINE / 4" WIDE
- SBTL/4" - SINGLE BROKEN YELLOW LINE / 4" WIDE
- SM6L/24" - SINGLE WHITE SOLID LINE / 24" WIDE

**SITE LEGEND**

- 6" WIDE FIRE LINE STRIPING PAINTED TRAFFIC RED W/ "NO PARKING FIRE LANE" PAINTED WITH 4" HIGH WHITE LETTERING AT 25' O.C. SEE DETAIL SHEET.
- PEDESTRIAN CROSSWALK WITH 6" WIDE PAINTED WHITE STRIPING PARALLEL TO DIRECTION OF TRAFFIC AT 2'-0" O.C. AND (1)-8" WHITE STRIPES PERPENDICULAR ON BOTH ENDS UNLESS NOTED OTHERWISE. SEE DETAIL SHEET FOR DIMENSIONS.
- PEDESTRIAN CROSSWALK SIGN TYPICAL AT PEDESTRIAN CROSSWALKS AS NOTED ON PLANS.
- "YIELD" PAINTED WHITE ON PAVEMENT TYPICAL. SEE DETAIL SHEET.
- CONCRETE JOINING AND FILLS TO BE COMPLETED PER DETAIL (TYPICAL OF ALL EXTERIOR CONCRETE EXCLUSIVE OF ARCHITECTURAL CONCRETE).
- EXIT PORCH, SEE ARCHITECTURAL PLANS FOR EXACT SIZE, LOCATION FOR STOPS, STAIRS AND/OR RAMPS THAT MAY BE REQUIRED. RAMP PAVEMENT FLUSH WITH THE TOP OF STOOP.
- 6" Ø PIPE BOLLARD TYPICAL UNLESS NOTED OTHERWISE. SEE DETAIL SHEET.
- AT GRADE OVERHEAD GOOP LOCATION. SEE ARCHITECTURAL PLANS FOR EXACT SIZE AND LOCATION FOR COORDINATION WITH CIVIL PLANS.
- 4" WIDE X 130" LONG YELLOW PAINTED TRUCK ALIGNMENT STRIPES TYPICAL.
- 27' X 32' CONCRETE COMPACTOR PAD AND 27' X 35" HEAVY DUTY PAD (ORIENT FOR TRUCK LANDING). REFER TO ARCHITECTURAL PLAN FOR EXACT LOCATION AND SIZE.
- CONCRETE TRANSFORMER PAD. CONTRACTOR TO COORDINATE WITH LOCAL POWER COMPANY FOR DETAILS.
- ACCESSIBLE PARKING SPACE TYPICAL. SEE DETAIL SHEET FOR ACCESSIBLE PARKING SPACE SIZE, SIGN AND SYMBOL. (VAN-INDICATES VAN ACCESSIBLE SPACE).
- 8'-0" WIDE PEDESTRIAN CROSSWALK. EDGE LINES PAINTED SM6L/6" WITH INSIDE STRIPING PAINTED SM6L/6" AT 2'-0" O.C. PERPENDICULAR TO EDGE LINES.
- CART CORRAL TYPICAL. SEE DETAIL SHEET FOR CART CORRAL DETAIL. (SAV'S CART CORRAL LOCATIONS ARE FIXED AND MUST BE CONFORMED WITH SAV'S MANAGEMENT).
- 2'-0" LOADING ZONE AT ALL CURBED PARKING SPACES. 4" PAINTED YELLOW STRIPING AT 2'-0" O.C. PERPENDICULAR TO PARKING SPACE. SEE DETAIL SHEET.
- 18" CONCRETE CURB AND CUTTER TYPICAL. SEE PLAN FOR TYPE. SEE DETAIL SHEET.
- PAINTED DIRECTIONAL ARROW TYPICAL. SEE DETAIL SHEET.
- BUILDING SETBACK LINE PER ZONING ORDINANCE.
- "NO PARKING FIRE LANE" SIGN. SEE PLAN FOR LOCATION.
- "NO TRUCKS" SIGN. SEE DETAIL SHEET.
- "TRUCK ROUTE" SIGN. SEE PLAN FOR LOCATION.
- "STOP" SIGN. SEE DETAIL SHEET.
- ADA STALL, LANDSCAPE ISLAND WALKWAY, & CART CROSSOVER. SEE DETAIL SHEET.
- INTERIOR LANDSCAPE ISLAND. SEE DETAIL SHEET.
- STOP BAR. SEE DETAIL SHEET.
- 6"x6" PAINTED STRIPPED AREA CENTERED ON SIPHONIC BREAK STORM MANHOLE. 4" PAINTED SOLID TRAFFIC YELLOW STRIPES 18" O.C. @ 45°. SEE DETAIL SHEET.
- ISOLATION JOINT TYPICAL AT FIXED STRUCTURES (BUILDINGS, RETAINING WALLS/DOCK WALLS, DROP INLETS, MANHOLES, LIGHT POLE BASES AND BOLLARDS). SEE DETAIL SHEET.
- CONCRETE BUFFER, 3" TYP.

**ALERT TO CONTRACTOR:**

ALL WM GENERAL CONTRACTOR WORK TO BE COMPLETED (EARTHWORK, FINAL UTILITIES, AND FINAL GRADING) BY THE MILESTONE DATE IN PROJECT DOCUMENTS. OUTLOT AREA TO BE KEPT FREE OF JOB TRAILERS AND STORAGE AFTER THE CONTRACT MILESTONE DATE FOR THE OUTLOT. WM CONTRACTOR SHALL BE RESPONSIBLE FOR THE PROTECTION OF ALL UTILITIES, STORM DRAINAGE, SIGNS, TRAFFIC SIGNALS & POLES, ETC. AS REQUIRED. ALL WORK SHALL BE IN ACCORDANCE WITH THE CITY OF MILWAUKEE SPECIFICATIONS. ALL COST SHALL BE INCLUDED IN BASE BID. PURCHASER OF OUTLOT TO PROVIDE PERMIT DOCUMENTS AND SWPPP REQUIRED BY STATE/LOCAL REQUIREMENTS FOR SPECIFIC OUTLOT.

**SITE ANALYSIS TABLE**

WALMART	39,994 S.F.
PARKING (ASSOCIATE AND CUSTOMER)	165 SPACES
ACCESSIBLE	6 SPACES
TOTAL PARKING	171 SPACES
RATIO	4.28/1,000 S.F.

\*PARKING SPACES OBSTRUCTED BY CART CORRALS ARE NOT INCLUDED IN OVERALL PARKING RATIO.

COMPLOT © 2011, BY ACQUIRE ENGINEERING ASSOCIATES  
ALL RIGHTS RESERVED. NO PART OF THESE DRAWINGS MAY BE REPRODUCED OR TRANSMITTED IN ANY FORM OR BY ANY MEANS, ELECTRONIC OR MECHANICAL, INCLUDING PHOTOCOPYING, RECORDING, OR BY ANY INFORMATION STORAGE AND RETRIEVAL SYSTEM, WITHOUT THE WRITTEN PERMISSION OF ACQUIRE ENGINEERING ASSOCIATES, INC.

**REVISIONS**

NO.	ITEM	DATE

DESIGNED BY: **JBB**  
 DRAWN BY: **JLJ**  
 CHECKED BY: **JLJ**  
 DATE: **May 11, 2011**

5417 North 118th Court  
(414) 616-4880

Milwaukee, Wisconsin 53225  
FAX: (414) 616-4885

**SITE PLAN**  
**WALMART STORE NO. 5697-00**  
**SWX 70th Street and Main Street**  
**Milwaukee, Wisconsin**

FILE NAME: W:\dwg\W\MILW\70th Street\10061E2 - Standard\5697.BASE.dwg  
 JOB NUMBER: 08-15-10-104

GRAPHIC SCALE: 1 inch = 40 ft

SHEET NO. **C5.0**

08-15-10-104



# STORM STRUCTURE LEGEND

- 1 INLET TYPE 1  
INLET COVER TYPE Z  
RM: 145.00 (NE)  
NW: 142.72 (SWE)
- 2 INLET TYPE 1  
INLET COVER TYPE Z  
RM: 147.50 (SW)
- 3 INLET COVER TYPE 2  
RM: 144.68 (SWE)
- 4 INLET COVER TYPE 2  
RM: 144.45 (N)
- 5 MANHOLE TYPE 1  
INLET COVER TYPE Z  
RM: 142.88 (NE)
- 6 INLET TYPE 1  
INLET COVER TYPE Z  
RM: 142.88 (NE)
- 7 INLET TYPE 1  
INLET COVER TYPE Z  
RM: 148.00 (NS)
- 8 INLET COVER TYPE 2  
RM: 143.81 (NW)
- 9 INLET TYPE 1  
INLET COVER TYPE Z  
RM: 141.99 (SEW)
- 10 INLET TYPE 1  
INLET COVER TYPE Z  
RM: 144.98 (N)
- 11 MANHOLE TYPE 1  
INLET COVER TYPE Z  
RM: 148.25 (N)
- 12 MANHOLE TYPE 1  
INLET COVER TYPE Z  
RM: 143.94 (NW)
- 13 INLET TYPE 1  
INLET COVER TYPE Z  
RM: 148.25 (N)
- 14 MANHOLE TYPE 1  
INLET COVER TYPE Z  
RM: 148.00 (NS)
- 15 INLET TYPE 1  
INLET COVER TYPE Z  
RM: 143.78 (SEW)
- 16 12" FES W/ GRATE  
NW: 143.00
- 17 12" FES W/ GRATE  
NW: 143.00
- 18 INLET TYPE 1  
INLET COVER TYPE Z  
RM: 142.72 (SWE)
- 19 INLET TYPE 1  
INLET COVER TYPE Z  
RM: 142.72 (SWE)
- 20 MANHOLE TYPE 1  
INLET COVER TYPE Z  
RM: 145.50 (NS)
- 21 MANHOLE TYPE 1  
INLET COVER TYPE Z  
RM: 145.50 (NS)
- 22 MANHOLE TYPE 1  
INLET COVER TYPE Z  
RM: 145.50 (NS)
- 23 RICKWELL DRAIN  
NW: 141.50 (W)
- 24 DIRECT CONNECT  
RM: 138.97 (E)
- 25 SINKHOLE MANHOLE  
RM: 148.50 (E)
- 26 SINKHOLE MANHOLE  
RM: 148.50 (E)
- 27 DIRECT CONNECT  
RM: 143.78 (SEW)
- 28 INLET TYPE 1  
INLET COVER TYPE Z  
RM: 143.00 (E)
- 29 INLET TYPE 1  
INLET COVER TYPE Z  
RM: 143.78 (SEW)
- 30 INLET TYPE 1  
INLET COVER TYPE Z  
RM: 137.84 (E)
- 31 INLET TYPE 1  
INLET COVER TYPE Z  
RM: 143.00 (E)
- 32 INLET TYPE 1  
INLET COVER TYPE Z  
RM: 143.00 (E)
- 33 INLET TYPE 1  
INLET COVER TYPE Z  
RM: 143.00 (E)
- 34 INLET TYPE 1  
INLET COVER TYPE Z  
RM: 143.00 (E)
- 35 INLET TYPE 1  
INLET COVER TYPE Z  
RM: 143.00 (E)
- 36 INLET TYPE 1  
INLET COVER TYPE Z  
RM: 143.00 (E)
- 37 INLET TYPE 1  
INLET COVER TYPE Z  
RM: 143.00 (E)
- 38 INLET TYPE 1  
INLET COVER TYPE Z  
RM: 143.00 (E)
- 39 INLET TYPE 1  
INLET COVER TYPE Z  
RM: 143.00 (E)
- 40 INLET TYPE 1  
INLET COVER TYPE Z  
RM: 143.00 (E)
- 41 INLET TYPE 1  
INLET COVER TYPE Z  
RM: 143.00 (E)
- 42 INLET TYPE 1  
INLET COVER TYPE Z  
RM: 143.00 (E)
- 43 INLET TYPE 1  
INLET COVER TYPE Z  
RM: 143.00 (E)
- 44 INLET TYPE 1  
INLET COVER TYPE Z  
RM: 143.00 (E)
- 45 INLET TYPE 1  
INLET COVER TYPE Z  
RM: 143.00 (E)
- 46 INLET TYPE 1  
INLET COVER TYPE Z  
RM: 143.00 (E)
- 47 INLET TYPE 1  
INLET COVER TYPE Z  
RM: 143.00 (E)
- 48 INLET TYPE 1  
INLET COVER TYPE Z  
RM: 143.00 (E)
- 49 INLET TYPE 1  
INLET COVER TYPE Z  
RM: 143.00 (E)
- 50 INLET TYPE 1  
INLET COVER TYPE Z  
RM: 143.00 (E)
- 51 INLET TYPE 1  
INLET COVER TYPE Z  
RM: 143.00 (E)
- 52 INLET TYPE 1  
INLET COVER TYPE Z  
RM: 143.00 (E)
- 53 INLET TYPE 1  
INLET COVER TYPE Z  
RM: 143.00 (E)
- 54 INLET TYPE 1  
INLET COVER TYPE Z  
RM: 143.00 (E)
- 55 INLET TYPE 1  
INLET COVER TYPE Z  
RM: 143.00 (E)
- 56 INLET TYPE 1  
INLET COVER TYPE Z  
RM: 143.00 (E)
- 57 INLET TYPE 1  
INLET COVER TYPE Z  
RM: 143.00 (E)
- 58 INLET TYPE 1  
INLET COVER TYPE Z  
RM: 143.00 (E)
- 59 INLET TYPE 1  
INLET COVER TYPE Z  
RM: 143.00 (E)
- 60 INLET TYPE 1  
INLET COVER TYPE Z  
RM: 143.00 (E)

# GRADING NOTES

1. CONTRACTOR IS RESPONSIBLE FOR DEMOLITION OF EXISTING STRUCTURES INCLUDING REMOVAL OF ANY EXISTING UTILITIES SERVING THE STRUCTURE. UTILITIES ARE TO BE REMOVED TO THE RIGHT OF MAIN.
2. THE CONTRACTOR IS SPECIFICALLY CAUTIONED THAT THE LOCATION AND/OR DEPTH OF EXISTING UTILITIES SHALL BE DETERMINED BY THE CONTRACTOR AND NOT BY THE VARIOUS UTILITY COMPANIES, AND WHERE POSSIBLE, RECORDS OF THE VARIOUS UTILITY COMPANIES, AND WHERE POSSIBLE, MEASUREMENTS TAKEN IN THE FIELD. THE INFORMATION IS NOT TO BE RELIED ON AS BEING EXACT OR COMPLETE. THE CONTRACTOR MUST CALL THE UTILITIES TO REQUEST EXACT FIELD LOCATION OF UTILITIES. IT SHALL BE THE RESPONSIBILITY OF THE CONTRACTOR TO RELOCATE ALL EXISTING UTILITIES WHICH CONFLICT WITH THE PROPOSED IMPROVEMENTS SHOWN ON THE PLANS. ALL CUT OR FILL SLOPES SHALL BE 3:1 OR FLATTER UNLESS OTHERWISE NOTED.
3. PRECAST STRUCTURES MAY BE USED AT CONTRACTOR'S OPTION.
4. STORM PIPE SHALL BE ADS N-12 (OR EQUAL).
5. EXISTING PIPES TO BE CLEANED OUT TO REMOVE ALL SILT AND DEBRIS.
6. EXISTING GRADE CONTROL INTERVALS SHOWN AT 1 FOOT.
7. PROPOSED GRADE CONTROL INTERVALS SHOWN AT 1 FOOT INTERVALS.
8. IF ANY EXISTING STRUCTURES TO REMAIN ARE DAMAGED DURING CONSTRUCTION IT SHALL BE THE CONTRACTOR'S RESPONSIBILITY TO REPAIR AND/OR REPLACE THE EXISTING STRUCTURE AS NECESSARY TO RETURN IT TO EXISTING CONDITIONS OR BETTER.
9. ALL STORM PIPE ENTERING STRUCTURES SHALL BE GROUTED TO ASSURE ALL CONNECTION AT STRUCTURE IS WATERTIGHT.
10. ALL STORM SEWER MANHOLES IN PAVED AREAS SHALL BE FLUSH WITH PAVEMENT, AND SHALL HAVE TRAFFIC BEARING RING & COVERS. MANHOLES IN UNPAVED AREAS SHALL BE 6" ABOVE FINISH GRADE. LIDS SHALL BE LABELED WITH STRUCTURE NUMBER.
11. THE CONTRACTOR SHALL ADHERE TO ALL TERMS & CONDITIONS AS SPECIFIED IN THE WALKWAY SPECIAL CONDITIONS, SECTION 8, ENVIRONMENTAL COMPLIANCE AND STORM WATER POLLUTION PREVENTION. THIS APPLIES TO WALKWAY BUILT PROJECTS ONLY.
12. CONTRACTOR SHALL ADJUST AND/OR CUT EXISTING PAVEMENT AS NECESSARY TO ASSURE A SMOOTH FIT AND CONTINUOUS GRADE.
13. CONTRACTOR SHALL ASSURE POSITIVE DRAINAGE AWAY FROM BUILDINGS FOR ALL NATURAL AND PAVED AREAS.
14. TOPOGRAPHIC INFORMATION IS TAKEN FROM A TOPOGRAPHIC SURVEY BY HCC/CLURE ENGINEERING ASSOCIATES, INC. DATED FEBRUARY 7, 2011. IF THE PLANS, WITHOUT EXCEPTION, THEN THE CONTRACTOR SHALL SURVEY, AT THEIR EXPENSE, A TOPOGRAPHIC SURVEY BY A REGISTERED LAND SURVEYOR TO THE OWNER FOR REVIEW.
15. ALL UNSURFACED AREAS DISTURBED BY GRADING OPERATION SHALL RECEIVE A MINIMUM OF 6 INCHES OF TOPSOIL. CONTRACTOR SHALL APPLY STABILIZATION DISTURBED AREAS IN ACCORDANCE WITH GOVERNING SPECIFICATIONS UNTIL A HEALTHY STAND OF VEGETATION IS OBTAINED.
16. CONSTRUCTION SHALL COMPLY WITH ALL APPLICABLE GOVERNING CODES AND BE CONSTRUCTED TO SAME.
17. ALL STORM STRUCTURES SHALL HAVE A SMOOTH UNIFORM POLYMER PORTLAND CEMENT INVERT IN TO INVERT OUT.
18. INLETS AND FRAMES
19. INLETS SHALL BE CONSTRUCTED IN ACCORDANCE WITH THE REQUIREMENTS OF WISCONSIN ADMINISTRATIVE CODE COM 82.56(09)3. FRAMES AND GRATES SHALL BE GRAY IRON MATERIAL (PER ASTM A-48) OF STYLES / CATALOG NUMBERS AS INDICATED ON THESE CONSTRUCTION DRAWINGS.
20. MANHOLES AND FRAMES
21. INLETS SHALL BE CONSTRUCTED IN ACCORDANCE WITH THE REQUIREMENTS OF WISCONSIN ADMINISTRATIVE CODE COM 82.56(09)4. FRAMES AND LIDS SHALL BE GRAY IRON MATERIAL (PER ASTM A-48) OF STYLES / CATALOG NUMBERS AS INDICATED ON THESE CONSTRUCTION DRAWINGS. INTERNAL CHIMNEY SEALS SHALL BE CHECK EX SPECIALTY PRODUCTS, OR EQUAL.
22. FIELD TILE CONNECTION
23. ALL FIELD TILE ENCOUNTERED DURING CONSTRUCTION SHALL BE EITHER CONNECTED TO THE PROPOSED STORM SEWER (WHENEVER POSSIBLE) OR INSPECTED BY CITY OF MILWAUKEE PRIOR TO BACKFILLING.
24. STORM SEWER NOTES ABOVE ARE IN ACCORDANCE WITH CITY OF MILWAUKEE REQUIREMENTS.

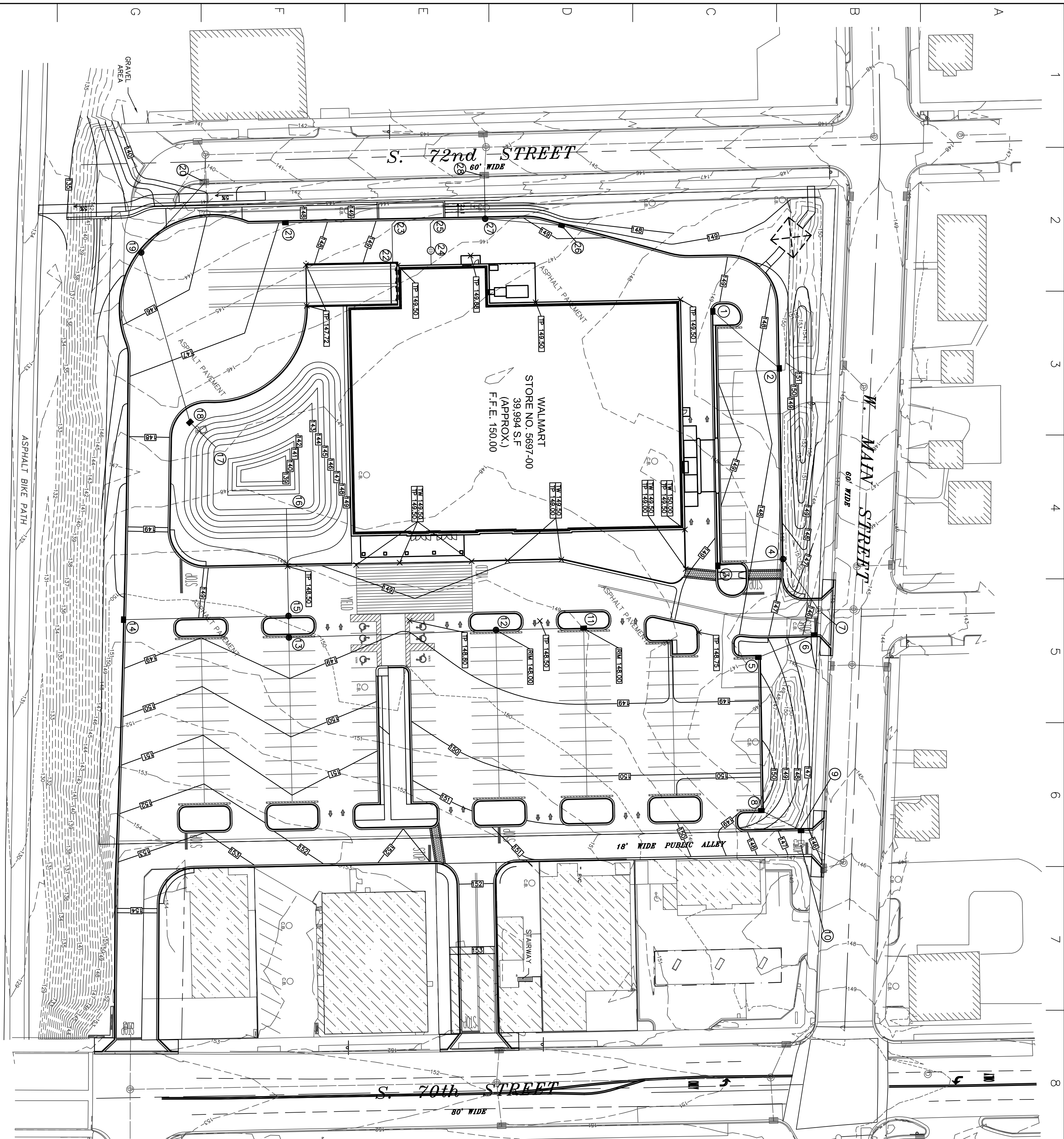
### STORM SEWER PIPE SIZING TABLE

FROM	TO	AREA (ACRES)	COEFF. C	STORM SEWER SIZE (IN)	MANHOLE SIZE (IN)	DEPTH (FT)	LENGTH (FT)
1	2	0.06	0.90	1.00	13.5	0.52	60
2	4	0.15	0.90	1.04	14.5	0.52	133
3	4	0.04	0.90	0.20	8.0	1.04	42
4	6	0.09	0.90	1.99	29.4	4.18	42
5	6	0.15	0.90	1.26	17.8	4.18	18
6	7	0.05	0.90	0.25	11.1	0.52	30
7	10	0.07	0.90	0.39	28.5	0.52	8
8	10	0.48	0.90	3.94	17.0	0.52	15
9	12	0.94	0.90	9.20	41.90	0.52	21
10	13	0.91	0.90	13.99	60.11	1.04	21
11	15	0.91	0.90	17.42	78.18	1.04	24
12	15	0.15	0.90	1.04	12.4	0.52	24
13	16	0.15	0.90	1.04	12.4	0.52	25
14	18	0.15	0.90	1.04	12.4	0.52	25
15	18	0.15	0.90	1.04	12.4	0.52	25
16	19	0.15	0.90	1.04	12.4	0.52	25
17	19	0.15	0.90	1.04	12.4	0.52	25
18	20	0.41	0.90	2.03	30.9	2.08	15
19	20	0.41	0.90	2.03	30.9	2.08	15
20	21	0.02	0.90	0.38	9.92	2.08	15
21	27	0.02	0.90	0.38	9.92	2.08	15
22	27	0.02	0.90	0.38	9.92	2.08	15
23	28	0.00	0.00	9.70	45.92	1.04	18
24	28	0.00	0.00	9.70	45.92	1.04	18

NOTE: PIPE SIZE REQUIRED IS BASED UPON COM 82, TABLE 82.36-1. CONTRACTOR SHALL PROVIDE/INSTALL STORM SEWER SIZES LISTED IN THE DIAMETER PROVIDED COLUMN IN THE TABLE ABOVE (NOT THE DIAMETER REQUIRED COLUMN).

# LEGEND

- STORM SEWER PIPING
- DRAINAGE STRUCTURE INDICATOR
- STANDARD INLET
- STANDARD MANHOLE
- SINKHOLE BREAK CONCRETE STORM MANHOLE (MUST HAVE VENTED MANHOLE) SEE DETAIL SHEET
- SLOPE ARROW
- PROPOSED CONTOURS
- EXISTING CONTOURS
- SINGLE FIXTURE LIGHT POLE AND BASE
- 2 FIXTURE LIGHT POLE AND BASE
- 3 FIXTURE LIGHT POLE AND BASE
- SHIELDED 2 FIXTURE LIGHT POLE AND BASE



### ALERT TO CONTRACTOR

ALL W/ GENERAL CONTRACTOR WORK TO BE COMPLETED GERTHWORK, FUTURE DEVELOPMENT AND OUTLET GRADING TO BE COMPLETED IN PROJECT DOCUMENTS. CONTRACTOR TO PROVIDE CLEAR ACCESS FOR TRAILERS AND STORAGE AFTER THE CONTRACT MILESTONE DATE FOR THE OUTLOT. W/ GENERAL CONTRACTOR TO PROVIDE CLEAR ACCESS FOR OUTLOT CONTRACTOR TO THE SPECIFIC PARCEL AT ALL TIMES AFTER MILESTONE DATE. PURCHASER OF OUTLOT TO PROVIDE PERMIT DOCUMENTS AND SWPPP REQUIRED BY STATE/LOCAL REQUIREMENTS FOR SPECIFIC OUTLOT.

### DEWATERING NOTE:

WHEN PERFORMING GRADING OPERATIONS DURING PERIODS OF WET WEATHER, PROVIDE ADEQUATE DEWATERING, DRAINAGE AND GROUND WATER MANAGEMENT TO CONTROL MOISTURE OF SOILS. REFER TO MASTER SITE SPECIFICATIONS.

COMPILED © 2011 BY HCC/CLURE ENGINEERING ASSOCIATES  
 ALL RIGHTS RESERVED. NO PART OF THESE DRAWINGS MAY BE REPRODUCED OR TRANSMITTED IN ANY FORM OR BY ANY MEANS, ELECTRONIC OR MECHANICAL, INCLUDING PHOTOCOPYING, RECORDING, OR BY ANY INFORMATION STORAGE AND RETRIEVAL SYSTEM, WITHOUT THE WRITTEN PERMISSION OF HCC/CLURE ENGINEERING ASSOCIATES, INC.

JOB NUMBER: 08-15-10-104

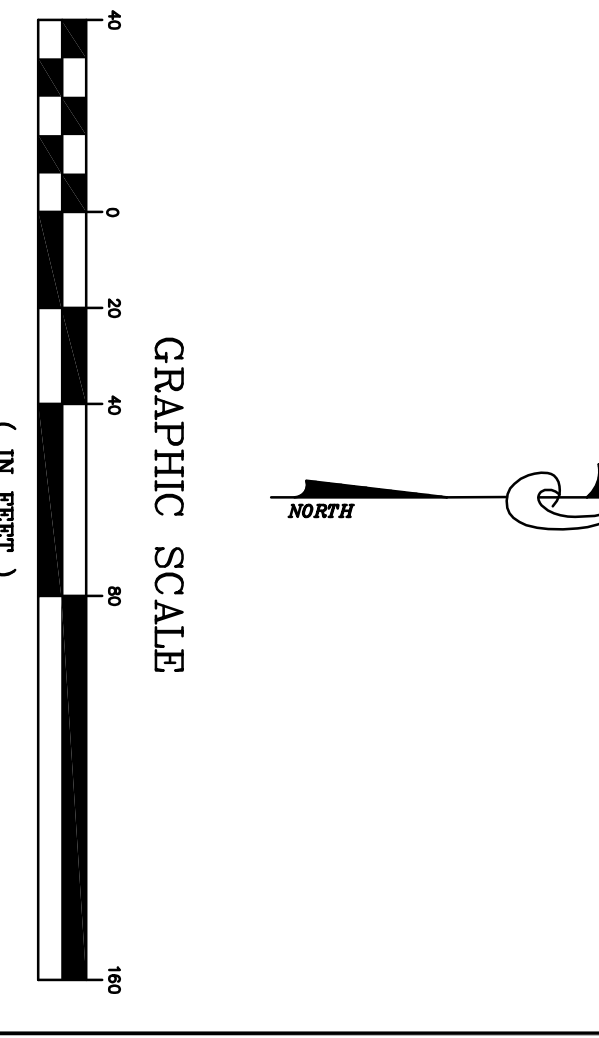
FILE NAME: W:\dwg\W\MIL\70th Street\10061E2 - Standard\5697.BASE.dwg

**McClure**  
 Engineering Associates, Inc.  
 5417 North 118th Court Milwaukee, Wisconsin 53225  
 (414) 616-4880 FAX: (414) 616-4885

PLOTTING SCALE: 1" = 40'  
 DESIGNED BY: JBB  
 DRAWN BY: JJJ  
 CHECKED BY: JLJ  
 DATE: May 5, 2011

NO.	REVISIONS	DATE

SHEET NO. **C6.0**  
 08-15-10-104





### LEGEND

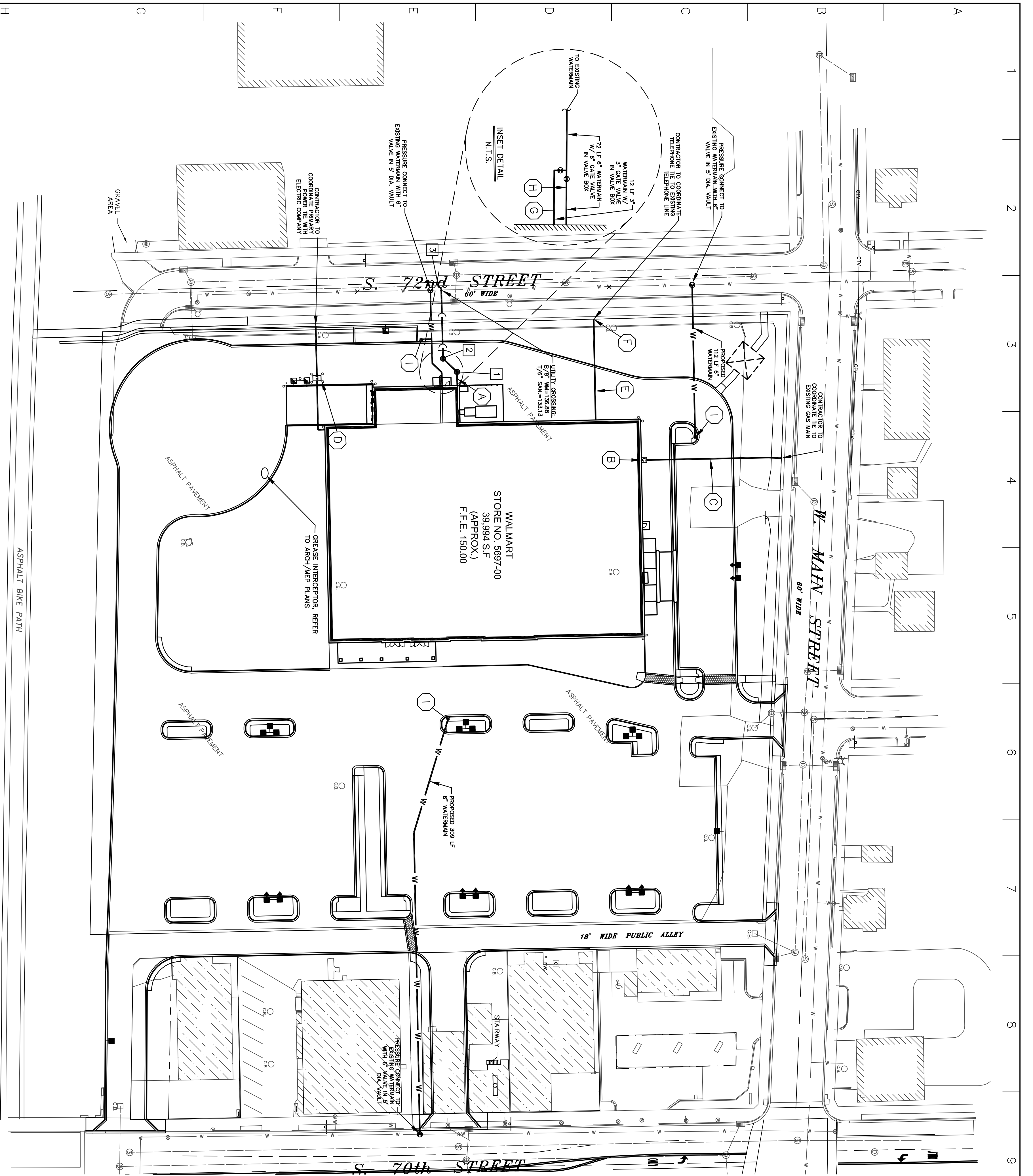
- ☎ TELEPHONE
- ELECTRIC
- SANITARY SEWER PIPE
- WATER PIPING
- GAS PIPING
- WATER VALVE
- FIRE HYDRANT
- SANITARY SEWER MANHOLE
- GAS METER
- TRANSFORMER PAD
- PIPE BOLLARD
- SINGLE FIXTURE LIGHT POLE AND BASE
- 2 FIXTURE LIGHT POLE AND BASE
- 3 FIXTURE LIGHT POLE AND BASE
- ROTATED 2 FIXTURE LIGHT POLE AND BASE
- SHIELDED SINGLE FIXTURE LIGHT POLE AND BASE
- SHIELDED AND ROTATED 2 FIXTURE LIGHT POLE AND BASE
- SANITARY SEWER STRUCTURE INDICATOR

### UTILITY NOTES

1. ALL FILL MATERIAL IS TO BE IN PLACE AND COMPACTED BEFORE INSTALLATION OF PROPOSED UTILITIES.
2. CONTRACTOR SHALL NOTIFY THE UTILITY AUTHORITIES INSPECTORS 72 HOURS BEFORE CONNECTING TO ANY EXISTING LINE.
3. SANITARY SEWER PIPE SHALL BE AS FOLLOWS:
  - 4. WATER LINES SHALL BE AS FOLLOWS:
    - 6" AND LARGER PVC C-900 PER ASTM D 2241 CLASS 150
    - SMALLER THAN 6" EITHER COPPER TYPE "K" (SOFT) PER ANSI B16.22 OR PVC 180 PER ANSI B16.21 PER ASTM D 3034 AND D2421.
  - 5. MINIMUM TRENCH WIDTH SHALL BE 2 FEET.
  - 6. ALL WATER JOINTS ARE TO BE MECHANICAL JOINTS WITH THURST BLOCKING AS CALLED OUT IN SPECIFICATIONS.
  - 7. ALL UTILITIES SHOULD BE KEPT EIGHT (8) FEET PARALLEL OR WHEN CROSSING BY VERTICAL CLEARANCE OUTSIDE EDGE OF PIPE TO OUTSIDE EDGE OF PIPE.
  - 8. CONTRACTOR SHALL MAINTAIN A MINIMUM OF 6'-0" COVER ON ALL WATERLINES.
  - 9. IN THE EVENT OF A VERTICAL CONFLICT BETWEEN WATER LINES, SANITARY LINES, STORM LINES AND GAS LINES (EXISTING AND PROPOSED), THE LINES AT LEAST 10 FEET ON BOTH SIDES OF CROSSING, THE WATER LINE SHALL HAVE TO PROVIDE A MINIMUM OF 18" CLEARANCE (SEEING REQUIREMENTS OF AAS) 2410 OR AIN 2411 (AMNH C-59) (CLASS 50).
  - 10. LINES UNDERGROUND SHALL BE INSTALLED, INSPECTED AND APPROVED BEFORE BACKFILLING.
  - 11. TOPS OF EXISTING MANHOLES SHALL BE RAISED AS NECESSARY TO BE FLUSH WITH PROPOSED PARALLEL ELEVATIONS AND TO BE ONE FOOT ABOVE FINISHED GRADE ELEVATIONS WITH WATER TIGHT LIDS.
  - 12. ALL CONCRETE FOR ENCASEMENTS SHALL HAVE A MINIMUM 28 DAY COMPRESSION STRENGTH AT 3000 P.S.I.
  - 13. EXISTING UTILITIES SHALL BE VERIFIED IN FIELD PRIOR TO INSTALLATION OF ANY NEW LINES.
  - 14. REFER TO INTERIOR PLUMBING DRAWINGS FOR HEAD OF ALL UTILITIES.
  - 15. CONTRACTOR IS RESPONSIBLE FOR COMPLYING TO THE SPECIFICATIONS OF ARCHITECTURAL PLANS.
  - 16. THE CONTRACTOR IS SPECIFICALLY CAUTIONED THAT THE LOCATION AND/OR ELEVATION OF EXISTING UTILITIES AS SHOWN ON THESE PLANS IS BASED ON RECORDS OF THE VARIOUS UTILITY COMPANIES AND WHERE POSSIBLE, RECORDS TAKEN IN THE FIELD. THE CONTRACTOR IS NOT TO BE RESPONSIBLE FOR THE ACCURACY OF THESE RECORDS. BEFORE ANY EXCAVATION TO RELOCATE EXISTING UTILITIES, IT SHALL BE THE RESPONSIBILITY OF THE CONTRACTOR TO LOCATE EXISTING UTILITIES BY CONTACT WITH THE PROPOSED JURISDICTIONS SHOWN ON THE PLANS.
  - 17. CONTRACTOR IS RESPONSIBLE FOR ALL NECESSARY INSPECTIONS AND/OR CERTIFICATIONS REQUIRED BY CODES AND/OR UTILITY SERVICE COMPANIES. THIS AND THE FINAL CONNECTIONS OF THE SERVICE SHALL BE COMPLETED 30 DAYS PRIOR TO STORE POSSESSION.
  - 18. CONTRACTOR SHALL COORDINATE WITH ALL UTILITY COMPANIES FOR INSTALLATION REQUIREMENTS AND SPECIFICATIONS.
  - 19. UTILITIES SHOWN AS EXISTING IN PUBLIC ROW WATER, SEWER, STORM AND THE ROADWAYS THEREAFTER ARE NOT CONSTRUCTED AS OF THIS DATE, BUT MAY NOT ALL BE COMPLETED AT THE TIME OF WALKWAY CONSTRUCTION.
  - 20. REFER TO BUILDING PLANS FOR SITE LIGHTING ELECTRICAL PLAN.

### UTILITY LEGEND

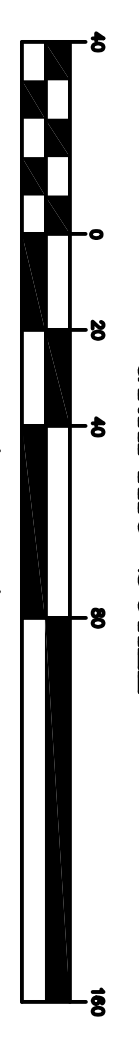
- A 6" SANITARY SEWER LATERAL AT 1.0% SLOPE. COORDINATE WITH ARCHITECTURAL PLANS.
- B GAS ENTRY WITH GAS METER. CONTRACTOR RESPONSIBLE FOR COORDINATE WITH GAS COMPANY FOR TYPING OF INDIVIDUAL METER.
- C CONTRACTOR IS RESPONSIBLE FOR COORDINATION WITH GAS COMPANY REGARDING THE SIZE AND INSTALLATION OF GAS SERVICE LINE.
- D PROPOSED LOCATION OF TRANSFORMER PAD. CONTRACTOR TO VERIFY INSTALLATION. CONTRACTOR SHALL BE RESPONSIBLE FOR REQUIRED BY THE ELECTRIC COMPANY. CONTRACTOR SHALL LOCATION OF TRANSFORMER AND BOLLARD CANNOT CONFLICT WITH TRUCK ACCESS TO DOCK DOOR.
- E UNDERGROUND TELEPHONE FROM POLE TO BUILDING TO BE EXTENDED BY TELEPHONE COMPANY.
- F CONTRACTOR IS RESPONSIBLE TO COORDINATE WITH THE TELEPHONE COMPANY FOR THE INSTALLATION OF OVERHEAD TELEPHONE LINES.
- G CONTRACTOR SHALL COORDINATE THE TYPING OF INDIVIDUAL METERS WITH THE ELECTRIC COMPANY.
- H 3" DOMESTIC WATER LINE ENTRY WITH METER PER CITY OF MILWAUKEE ANY APPOINTMENTS ON THE DOMESTIC LINE SUCH AS BACKFLOW PREVENTERS, CONTRACTOR SHALL BE RESPONSIBLE FOR INSTALLING REQUIREMENTS. CONTRACTOR SHALL BE RESPONSIBLE FOR COORDINATING WITH CITY OF MILWAUKEE.
- I 6" SPRINKLER ENTRY. CONTRACTOR SHALL BE REQUIRED TO INSTALL ANY APPOINTMENTS ON THE SPRINKLER LINE SUCH AS, BUT NOT LIMITED TO, BACKFLOW PREVENTERS, CHECK VALVES, ETC., MEETING CITY OF MILWAUKEE REQUIREMENTS.
- J PROPOSED FIRE HYDRANT AND ASSEMBLY, TYPICAL, AS INDICATED. SEE DETAIL SHEET.
- K ALL LP CAMERA HALL BOXES LOCATED IN PAVED AREAS SUBJECT TO TRAFFIC SHALL BE 74-20" LOAD RATED. THE TYPICAL FALL BOX SIZE WILL BE 17" X 30" X 28" QUARTZ FIBERGLASS BOX WITH 1/2" THICK POLYURETHANE FLOORING. THE FALL BOX SHALL BE REQUIRED WHEN THE CONDUIT ALIGNMENT IS AFFECTED BY OTHER UTILITIES. THE FALL BOX SHALL BE INSTALLED PER THE MANUFACTURER'S SPECIFICATION WITH A CONCRETE COLLAR AND A MINIMUM OF 8" OF GRAVEL COMPACTED PER PRODUCT SPECIFICATIONS.
- L ONE 3" SCHEDULE 40 PVC INSTALLED TO BE BACKFILLED WITH 3" GRANULAR FILL. ONE 2" SCHEDULE 40 PVC INSTALLED TO BE BACKFILLED WITH 2" GRANULAR FILL. ONE 1" SCHEDULE 40 PVC INSTALLED TO BE BACKFILLED WITH 1" GRANULAR FILL. THE MINIMUM BURIAL DEPTH SHALL BE 24". INSTALL AN APPROVED 1/2" ABOVE CONDUIT TAP WITH INTERNAL BONDING CABLE WOUND TO ABOVE CONDUIT.
- M ONE 2" CONDUIT SHALL BE CALLED OUT PER DIRECT BURIAL. TELEPHONE DUCT OR SCHEDULE 40 PVC INSTALLED ADVANCED HILL WIRE OR PURPLE PROPYLENE/ETHYLENE ROPE WITH A MINIMUM PULLING TENSION OF 100 POUNDS. THE MINIMUM BURIAL DEPTH SHALL BE 24". BARBED CABLE WORKING 6" ABOVE CONDUIT. THE 2 1/2" CAMERA CONDUIT SHALL BE SEPARATED FROM THE ABOVE LIGHT FIXTURE POWER BY A DIVIDER PLACED IN THE LIGHT POLE BASE JUNCTION BOX.



### SANITARY SEWER SCHEDULE

STRUCTURE NUMBER	STRUCTURE TYPE	TOP OF CASTING ELEV.	INVERT IN	ELEVATION OUT	PIPE LENGTH (FEET)	PIPE SIZE/TYPE	PERCENT SLOPE
1-2	DROP MANHOLE	148.75	141.00 (E)	134.20 (W)	14'	6" PVC	2.43%
2-3	MANHOLE	148.80	133.80 (E)	133.86 (W)	54'	6" PVC	2.43%
3	WYE CONNECTION	132.52 (E)	132.52 (S)				

### GRAPHIC SCALE



REVISIONS		
NO.	ITEM	DATE

DESIGNED BY:	JBB
DRAWN BY:	JLJ
CHECKED BY:	JLJ
DATE:	May 5, 2011


**McClure**  
 Engineering Associates, Inc.  
 5417 North 118th Court  
 (414) 616-4880  
 Milwaukee, Wisconsin 53225  
 FAX: (414) 616-4885

**UTILITY PLAN**  
**WALMART STORE NO. 5697-00**  
 SWX 70th Street and Main Street  
 Milwaukee, Wisconsin  
 FILE NAME: W:\dwg\W\MIL\W\70th Street\10061E2 - Standard\5697.BASE.dwg  
 JOB NUMBER: 08-15-10-104

COPYRIGHT © 2011, BY MCCLURE ENGINEERING ASSOCIATES  
 ALL RIGHTS RESERVED. NO PART OF THESE DRAWINGS MAY  
 BE REPRODUCED OR TRANSMITTED IN ANY FORM OR BY  
 ANY MEANS, ELECTRONIC OR MECHANICAL, INCLUDING  
 PHOTOCOPYING, RECORDING, OR BY ANY INFORMATION  
 SYSTEMS WITHOUT PERMISSION OF MCCLURE ENGINEERING  
 ASSOCIATES, INC.

SHEET NO.  
**C7.0**  
 08-15-10-104



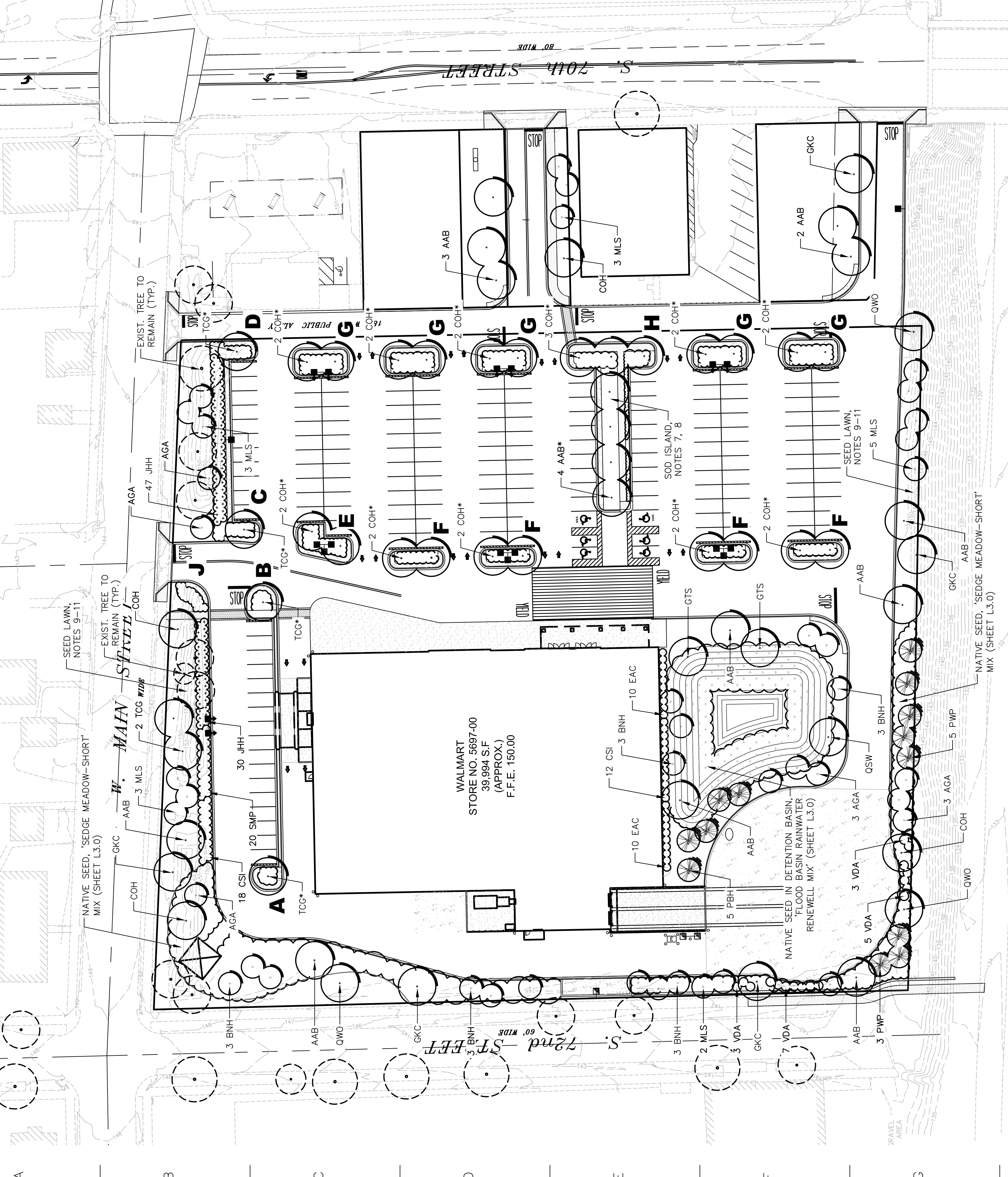
REVISIONS	
NO.	ITEM
1	REVISED PER DRT COMMENTS RECEIVED 5/3/11
2	REVISED PER STAFF COMMENT
DATE	
5/10/11	

**planting notes**

- LANDSCAPE CONTRACTOR (CONTRACTOR) SHALL VISIT SITE, INSPECT EXISTING CONDITIONS AND REVIEW PROPOSED PLANTING AND RELATED WORK. IN CASE OF DISCREPANCY BETWEEN PLAN AND PLANT LIST, PLAN SHALL GOVERN QUANTITIES.
- CONTRACTOR SHALL VERIFY LOCATIONS OF ALL ON-SITE UTILITIES PRIOR TO BEGINNING CONSTRUCTION ON HIS PHASE OF WORK. ELECTRIC, GAS, TELEPHONE, AND CABLE TELEVISION MAY BE LOCATED AT ANY DEPTH. CONTRACTOR SHALL BE RESPONSIBLE FOR IDENTIFYING AND MARKING ALL UTILITIES. CONTRACTOR SHALL COORDINATE ALL RELATED ACTIVITIES WITH OTHER TRADES ON THE JOB AND REPORT ANY UNACCEPTABLE JOB CONDITIONS TO OWNER'S REPRESENTATIVE PRIOR TO COMMENCING WORK.
- CONTRACTOR RESPONSIBLE FOR APPLICATION AND COST OF ALL NECESSARY BUILDING PERMITS AND CODE VERIFICATIONS. SUBMIT COPIES OF ALL DOCUMENTS TO OWNER AND ARCHITECT.
- ALL SHRUB BEDS AND TREES SHALL BE MULCHED WITH A 4" CONTINUOUS LAYER OF SHREDED BARK MULCH. ALL DECIDUOUS TREES SHALL BE MULCHED WITH A 3" DIAMETER CIRCLE OF MULCH. ALL EVERGREEN TREES SHALL BE MULCHED WITH A 3" DIAMETER CIRCLE OF MULCH.
- CONTRACTOR SHALL GRADE ENTIRE SITE TO CORRECT SURFACE IRREGULARITIES IN PREPARATION FOR SEEDING ACTIVITIES. DISK, DRAG, HARROW OR HAND RAKE SUBGRADE TO A DEPTH OF 6" TO 8" TO REMOVE ALL STAGGER AND DEPRESSIONS. ROLL RAKE AND LEVEL AS NECESSARY TO OBTAIN TRUE, EVEN LAWN SURFACES. ALL SEEDING ACTIVITIES SHALL BE COMPLETED WITHIN 14 DAYS OF THE DATE PLANTING BEGINS. ENGLISH GRADES SHALL MEET APPROVAL OF OWNER BEFORE GRASS SEED IS SOWN.
- ALL DISTURBED AREAS ARE TO RECEIVE MINIMUM 6" OF TOPSOIL. SEED, STRAW MULCH, SEED FERTILIZER AND WATER SHALL BE APPLIED TO ALL SEEDING AREAS. AMEND TOPSOIL AS IS ESTABLISHED (SEE NOTES 8 AND 11 FOR ACCEPTANCE OF GRASS). AMEND TOPSOIL AS REQUIRED PER PART THREE OF THE PLANTING SPECIFICATION (SECTION 02900).
- INSTALL 500 N. AREAS INDICATED ON PLAN. 500 TO BE WELL ESTABLISHED MINERAL. THE GROWTH, NO PEAT SOIL WILL BE ALLOWED. 500 BLEND SHALL CONSIST OF THE FOLLOWING BLUEGRASS TYPES: 55% MAJESTIC, 15% ADELPHI, AND 15% GADE. 500 PRECES COEGRASS TO BE IT TOGETHER. SO THAT NO JOINT IS VISIBLE. SEEDS ARE TO BE SOWN AT A RATE OF 15-20 LBS PER 1,000 S.F. FERTILIZER AT A RATE OF 6 LBS PER 1,000 S.F. MULCHED AT FIRST CUTTING WITH A 15-40-5 FERTILIZER AT A RATE OF 6 LBS PER 1,000 S.F.
- ACCEPTANCE OF GRADING AND SOIL SHALL BE BY LANDSCAPE ARCHITECT AND/OR OWNER (30) DAYS OR UNTIL SECOND CUTTING, WHICHEVER IS LONGER. MAINTENANCE SHALL INCLUDE KEEP SOIL IN A THRIVING CONDITION. UPON FINAL ACCEPTANCE, THE OWNER SHALL ASSUME ALL MAINTENANCE RESPONSIBILITIES.
- CONTRACTOR TO SEED ALL LAWN AREAS AS INDICATED ON PLAN. SEEDED LAWN TO BE A COMBINATION OF BLUEGRASS, PERENNIAL RYE, AND RED FESCUE WITH THE FOLLOWING ANALYSIS: 50% PERENNIAL RYE, 20% MAJESTIC, 15% ADELPHI, 10% PENNINE PERENNIAL RYE GRASS AND 5% RED FESCUE. 20% SCALDS HARD FESCUE, AND 10% PENNINE PERENNIAL RYE GRASS. ALL SEEDED AREAS SHALL BE COVERED WITH STRAW MULCH, WHICH SHALL CONSIST OF HAND HARROWED STRAW MULCH. MULCH SHALL BE APPLIED AT A RATE OF 2.0 TONS PER 1,000 S.F. ENOUGH TO REDUCE EROSION. IF BALED MULCH MATERIAL IS USED, CARE SHALL BE TAKEN TO COMPACT MULCH MATERIAL IN A LOOSEENED CONDITION AND CONTAINS NO LUMPS OR KNOTS OF COMPACTED MATERIAL.
- ALL SEEDED LAWN AREAS SHALL BE FERTILIZED AT INSTALLATION WITH A 15-20-25 ANALYSIS AT A RATE OF 6 LBS PER 1,000 S.F. AFTER SECOND APPLICATION OF 15-40-5 TO BE APPLIED AT A RATE OF 6 LBS PER 1,000 S.F. AFTER FIRST CUTTING. ACCEPTANCE AND GUARANTEE NOTE SHALL APPLY TO ALL SEEDED LAWN AREAS.
- ACCEPTANCE OF GRADING AND SEEDING SHALL BE BY LANDSCAPE ARCHITECT AND/OR OWNER. CONTRACTOR SHALL BE RESPONSIBLE FOR ALL MAINTENANCE OPERATIONS NECESSARY TO KEEP ALL LAWN AREAS WATERING, WEEDING, RESEEDING, AND OTHER OPERATIONS NECESSARY TO KEEP ALL LAWN AREAS IN A THRIVING CONDITION. CONTRACTOR SHALL BE RESPONSIBLE FOR ALL MAINTENANCE OPERATIONS NECESSARY TO KEEP ALL LAWN AREAS IN A THRIVING CONDITION. AFTER LAWN AREAS HAVE GERMINATED, AREAS WHICH FAIL TO SHOW A UNIFORM STAND OF GRASS FOR ANY REASON WHATSOEVER SHALL BE RESEED REPEATEDLY UNTIL A UNIFORM STAND OF GRASS IS OBTAINED. CONTRACTOR SHALL BE RESPONSIBLE FOR ALL MAINTENANCE OPERATIONS NECESSARY TO KEEP ALL LAWN AREAS IN A THRIVING CONDITION. CONTRACTOR SHALL BE RESPONSIBLE FOR ALL MAINTENANCE OPERATIONS NECESSARY TO KEEP ALL LAWN AREAS IN A THRIVING CONDITION. CONTRACTOR SHALL BE RESPONSIBLE FOR ALL MAINTENANCE OPERATIONS NECESSARY TO KEEP ALL LAWN AREAS IN A THRIVING CONDITION. CONTRACTOR SHALL BE RESPONSIBLE FOR ALL MAINTENANCE OPERATIONS NECESSARY TO KEEP ALL LAWN AREAS IN A THRIVING CONDITION.
- EXTENDED MAINTENANCE AND WARRANTY PERIOD OF LANDSCAPE INSTALLATION SHALL COMMENCE UPON ACCEPTANCE OF SUBSTANTIAL COMPLETION, AND SHALL HAVE A DURATION OF 12 TO 19 MONTHS DEPENDING UPON THE ACCEPTED COMPLETION DATE AS OUTLINED IN SECTION 3.11.B OF THE PLANTING SPECIFICATIONS.
- INSTALLATION OF AN AUTOMATIC IRRIGATION SYSTEM IS NOT REQUIRED BY MILWAUKEE MUNICIPAL ORDINANCE. CONTRACTOR SHALL BE RESPONSIBLE FOR THE DESIGN AND INSTALLATION OF SUCH SYSTEM. SUCH SYSTEM SHALL BE INSTALLED SUPPLEMENTAL WATERING SHALL BE PERFORMED BY THE LANDSCAPE CONTRACTOR DURING ESTABLISHMENT OF PLANT MATERIAL. IN ACCORDANCE WITH THE MILWAUKEE MUNICIPAL ORDINANCE, CONTRACTOR SHALL BE RESPONSIBLE FOR THE DESIGN AND INSTALLATION OF SUCH SYSTEM THAT IS PROVEN HARDY IN COMMERCIAL APPLICATIONS AND WILL PROVIDE MAXIMUM DROUGHT TOLERANCE ONCE ESTABLISHED.

**planting list**

KEY	Botanical name COMMON NAME	SIZE	REMARKS
AAB	Acer x freemanii 'Autumn Blaze' AUTUMN BLAZE MAPLE	2-1/2"	
AAB*	Acer x freemanii 'Autumn Blaze' AUTUMN BLAZE MAPLE	4"	
AGA	Amelechier x grandiflora 'Autumn Brilliance' AUTUMN BRILLIANCE SERVICEBERRY	8"	MULTI-STEM
BNH	Betula nigra 'Heritage' HERITAGE RIVER BIRCH	8"	MULTI-STEM
COH	Celtis occidentalis 'Proflora Pride' PRAIRIE PRIDE HAWDOBERY	2-1/2"	
COH*	Celtis occidentalis 'Proflora Pride' PRAIRIE PRIDE HAWDOBERY	4"	
CSI	Cornus sericea 'Ivory' ISANTI REDTIG DOGWOOD	30"	
EAC	Echinops dialatus 'Compactum' DWARF BURNING BUSH	30"	
ECP	Echinacea purpurea 'Magnus' PURPLE CONEFLOWER	2-1/2"	
GKC	Gymnocladia dioica KENTUCKY COFFEE TREE	2-1/2"	
GTS	Gleditsia triacanthos 'Hermita' SKYLINE HONEY LOCUST	2-1/2"	
JHH	Juniperus horizontalis 'Hughes' HUGHES JUNIPER	5 GAL	
LSS	Leucanthemum superbum 'Alaska' ALASKA SHASTA DAISY	1 GAL	
MLS	Magnolia 'Spring Snow' SPRING SNOW ORANGEAPPLE	8"	
PAH	Panicum alleghaniense 'Homeni' DWARF FOUNTAIN GRASS	1 GAL	
PBH	Picea glauca densata BLACK HILLS SPRUCE	8"	UNSHEARED
PMP	Pinus strobus PINE	8"	UNSHEARED
PWV	Patentillo fruticoso 'Mackoy's White' MACKAY'S WHITE POTENTILLA	24"	
OSW	Quercus bicolor Swamp White Oak	2-1/2"	
OWO	Quercus alba WHITE OAK	2-1/2"	
RAG	Rhus aromatica 'Gro-Low' GRO-LOW FRAGRANT SUMAC	5 GAL	
RFG	Rubus odoratus 'Goldsturm' GOLDSTURM BLACK EYED SUSAN	1 GAL	
RFJ	Rhododendron 'Tzani' P.M. RHODODENDRON	24"	
SHP	Sporobolus heterolepis PRAIRIE DRIPSEED	1 GAL	
SAL	Spiraea japonica 'Little Princess' LITTLE PRINCESS SPIREA	24"	
SMP	Syringa 'Mopid' 'Zabala' DWARF KOREAN LILAC	30"	
TCG	Thuja occidentalis 'Greenlife' GREENSPHIRE LITTLELEAF LINDEN	2-1/2"	
TCG*	Thuja occidentalis 'Greenlife' GREENSPHIRE LITTLELEAF LINDEN	4"	
TMD	Taxus x media 'Densiformis' DENSE HEDGE YEW	24"	
VFJ	Viburnum x juddi FRAGRANT JUDDI VIBURNUM	30"	
VDA	Viburnum dentatum ARROW WOOD VIBURNUM	36"	



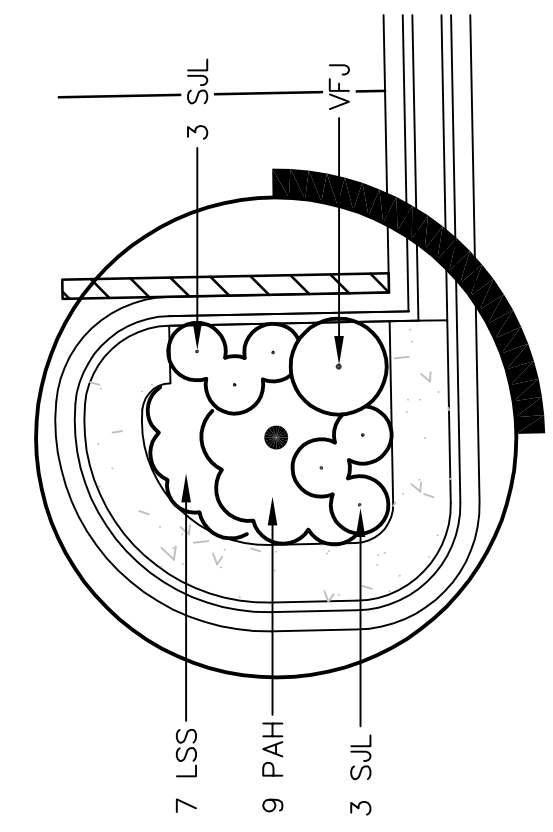
**DIGGERS HOTLINE**  
 TOLL FREE (800) 242-8311  
 MILWAUKEE AREA (414) 751-1131  
 HEARING IMPAIRED TDD (800) 542-2829  
 WWW.DIGGERSHOTLINE.COM

**NORTH**  
  
 scale 1" = 40'  
 0 40 80

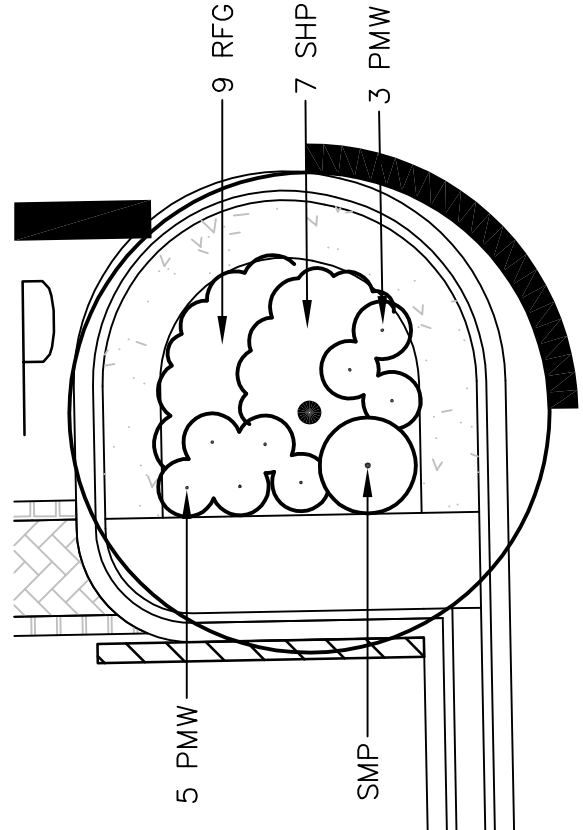
**ALERT TO CONTRACTOR:**  
 ALL WFT GENERAL CONTRACTOR WORK TO BE COMPLETED EARLY WORK.  
 PROJECT DOCUMENTS, IF APPLICABLE, OUTLOT AREA TO BE KEPT FREE OF  
 JOB TRAILERS AND STORAGE AFTER THE CONTRACT MILESTONE DATE FOR  
 THE OUTLOT AREA. CONTRACTOR SHALL BE RESPONSIBLE FOR THE  
 MILESTONE DATE. PURCHASER OF OUTLOT TO PROVIDE PERMIT DOCUMENTS  
 AND SWPPP REQUIRED BY STATE/LOCAL REQUIREMENTS FOR SPECIFIC  
 OUTLOT.



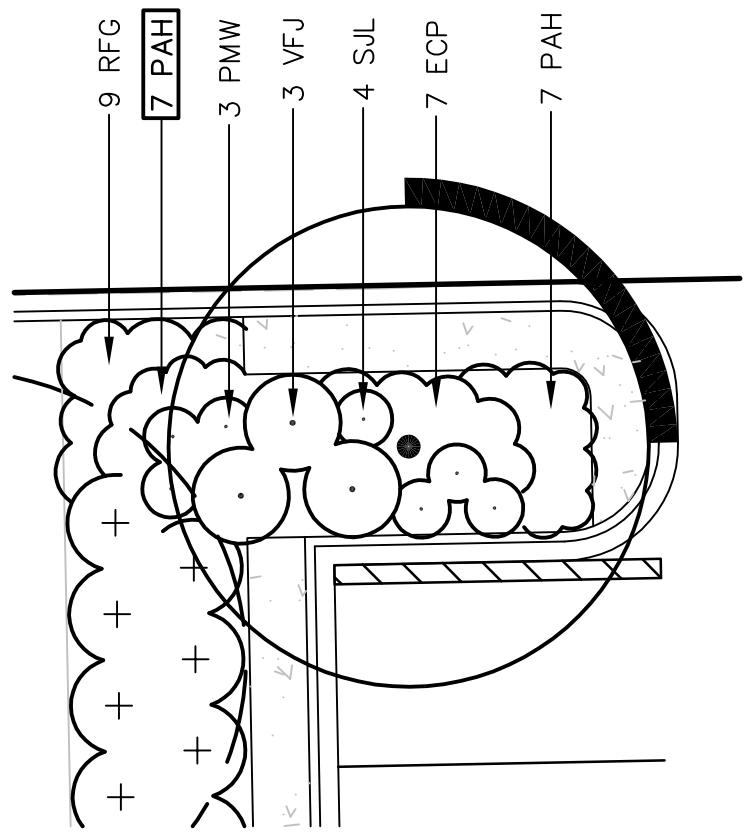
1 2 3 4 5 6 7 8 9 10 11 12 13



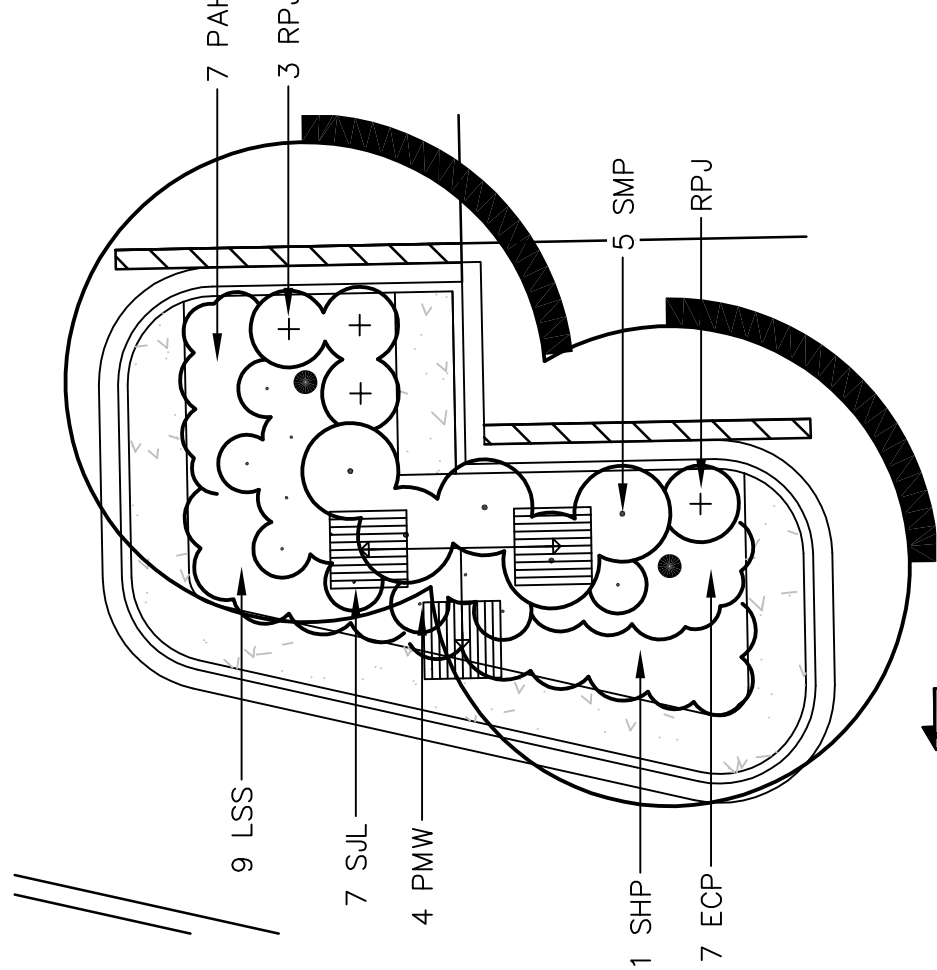
**A** PARKING LOT ISLAND - TYPE 'A'  
L2.0 SCALE: 1"=10'-0"



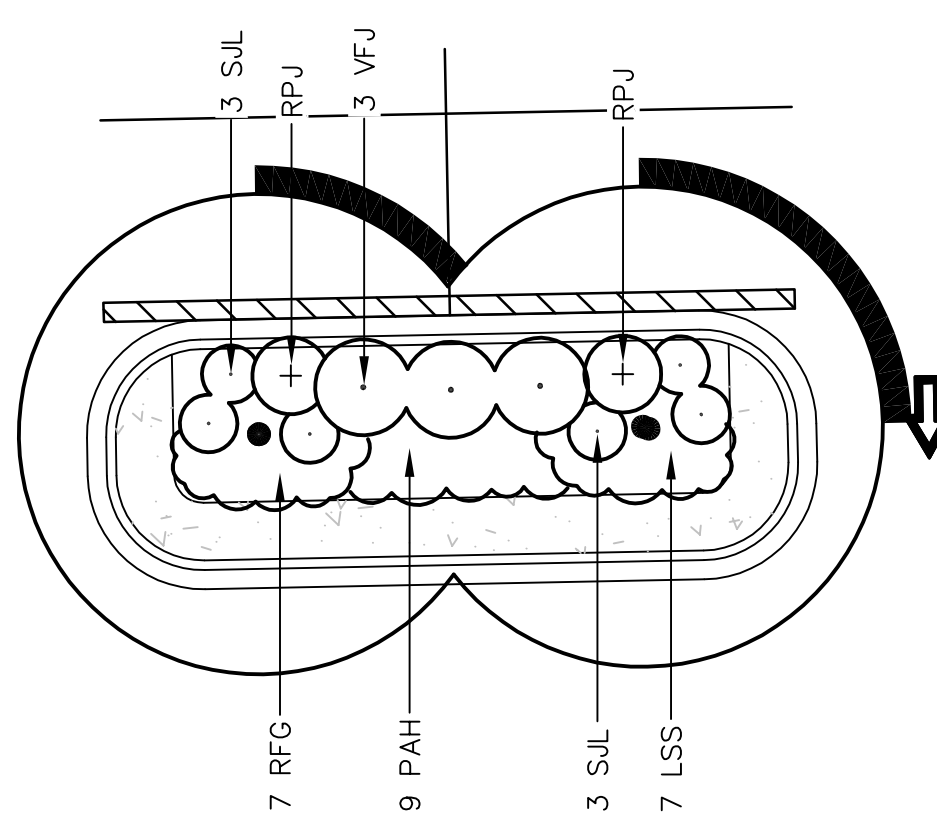
**B** PARKING LOT ISLAND - TYPE 'B'  
L2.0 SCALE: 1"=10'-0"



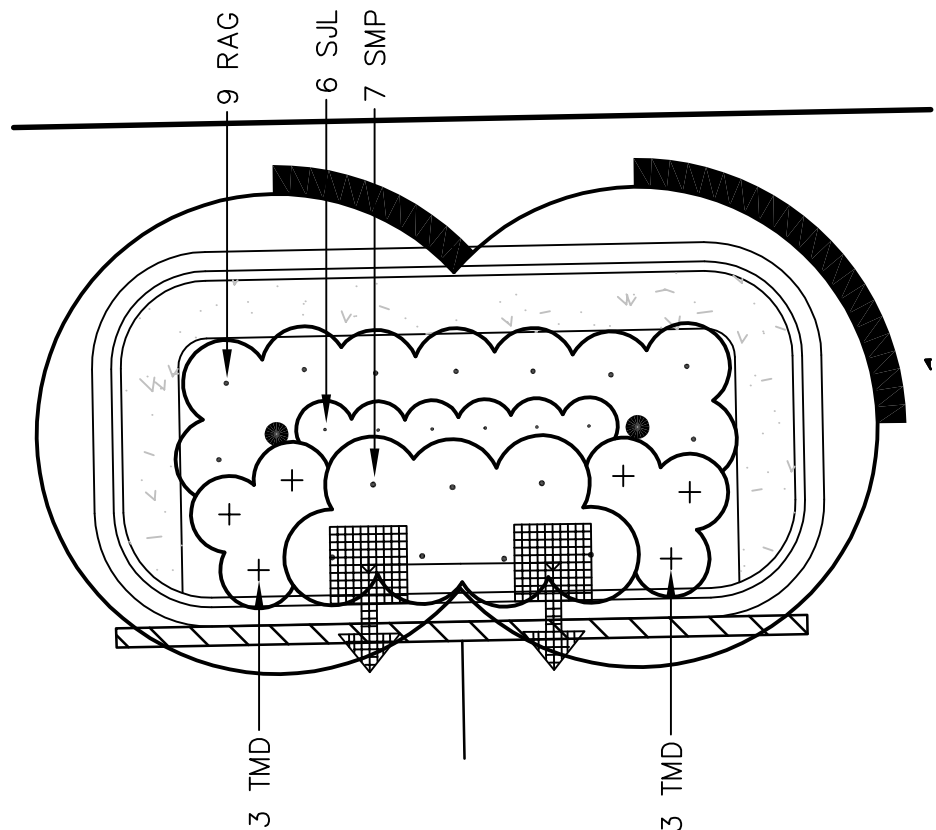
**D** PARKING LOT ISLAND - TYPE 'D'  
L2.0 SCALE: 1"=10'-0"



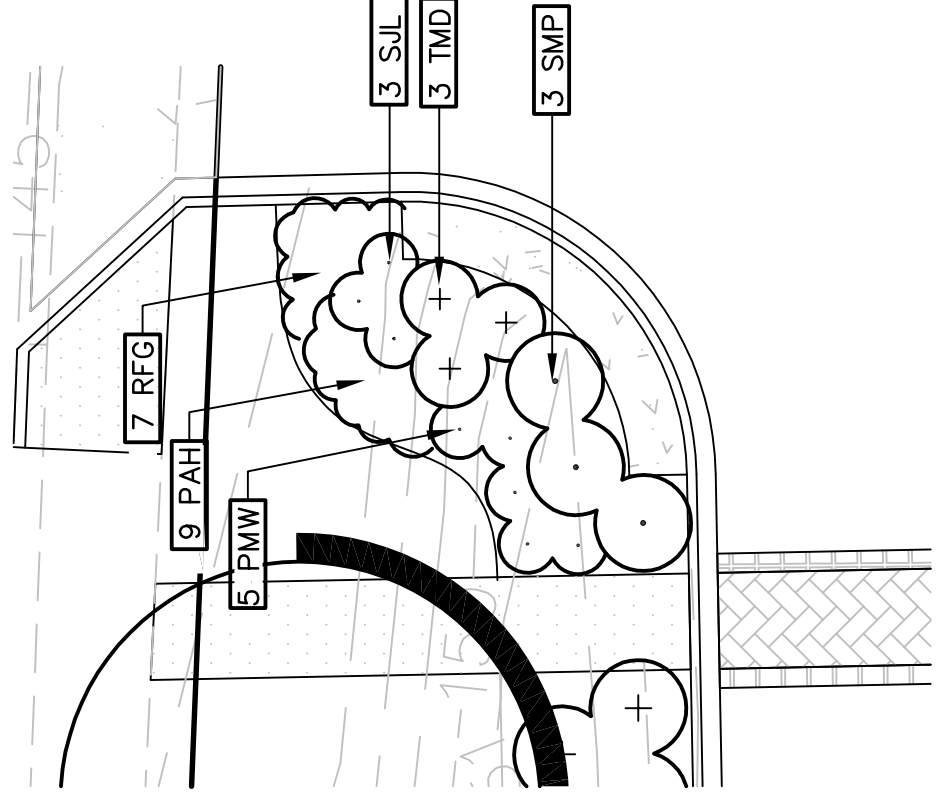
**E** PARKING LOT ISLAND - TYPE 'E'  
L2.0 SCALE: 1"=10'-0"



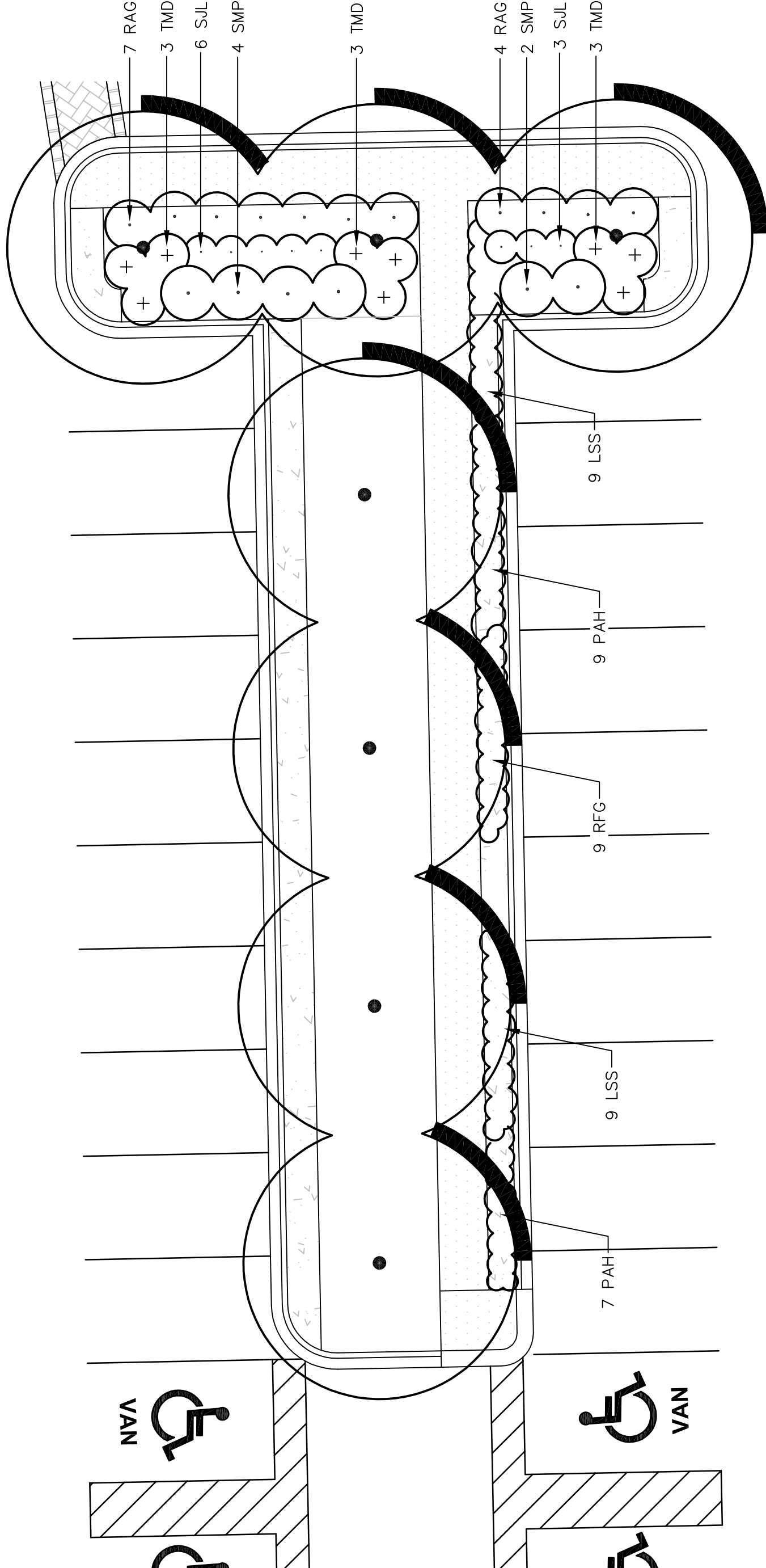
**F** PARKING LOT ISLAND - TYPE 'F'  
L2.0 SCALE: 1"=10'-0" (4 TOTAL 'TYPE F' ISLANDS)



**G** PARKING LOT ISLAND - TYPE 'G'  
L2.0 SCALE: 1"=10'-0" (5 TOTAL 'TYPE G' ISLANDS)



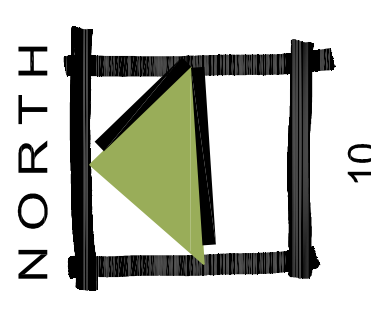
**J** PARKING LOT ISLAND - TYPE 'J'  
L2.0 SCALE: 1"=10'-0"



**H** PARKING LOT ISLAND - TYPE 'H'  
L2.0 SCALE: 1"=10'-0"

**C** PARKING LOT ISLAND - TYPE 'C'  
L2.0 SCALE: 1"=10'-0"

**ALERT TO CONTRACTOR:**  
ALL WORK CONTRACTOR WORK TO BE COMPLETED EARLY WORK.  
ALL MATERIALS AND EQUIPMENT TO BE STORED IN THE DESIGNATED  
PROJECT DOCUMENTS. IF APPLICABLE, OUTLOT AREA TO BE KEPT FREE OF  
JOB TRAILERS AND STORAGE AFTER THE CONTRACT MILESTONE DATE FOR  
MATERIALS AND EQUIPMENT TO BE STORED IN THE DESIGNATED  
OUTLOT CONTRACTOR TO THE SPECIFIC PARCEL AT ALL TIMES AFTER  
MILESTONE DATE. PURCHASER OF OUTLOT TO PROVIDE PERMIT DOCUMENTS  
AND SWPPP REQUIRED BY STATE/LOCAL REQUIREMENTS FOR SPECIFIC  
OUTLOT.

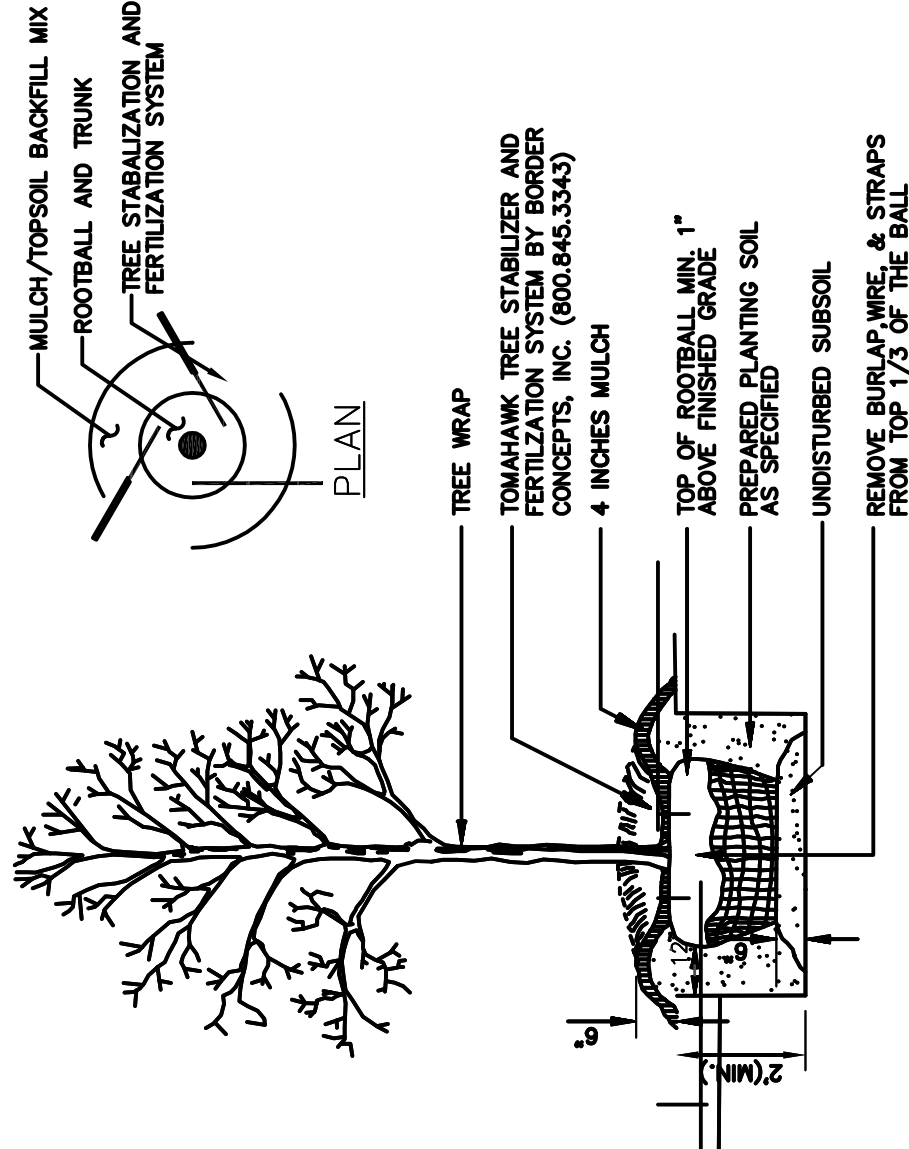


scale 1" = 10'

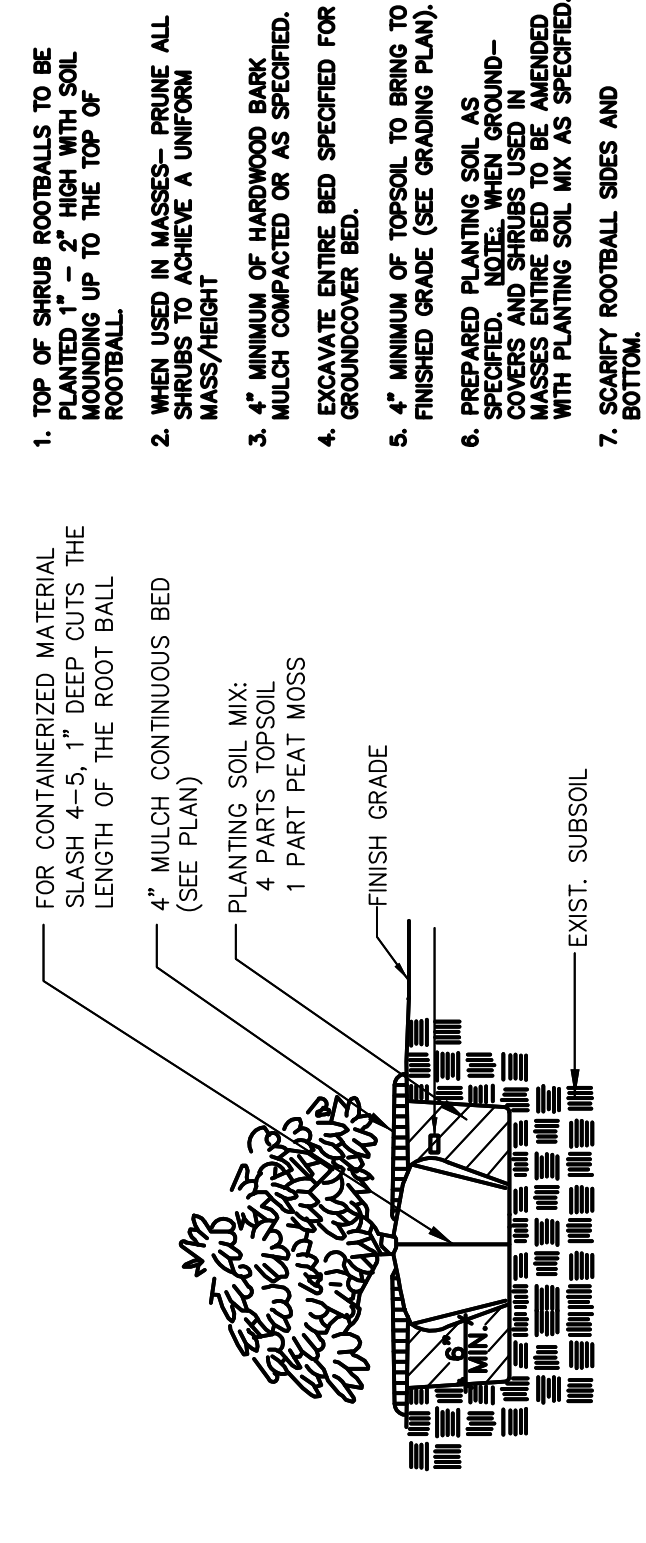
**DIGGERS HOTLINE**  
TOLL FREE (800) 242-8311  
MILWAUKEE AREA (414) 252-1131  
HEARING IMPAIRED TDD (800) 542-2289  
WWW.DIGGERSHOTLINE.COM

REVISIONS	
NO.	ITEM
1	REVISED PER DRT COMMENTS RECEIVED 5/3/11
	DATE 5/6/11

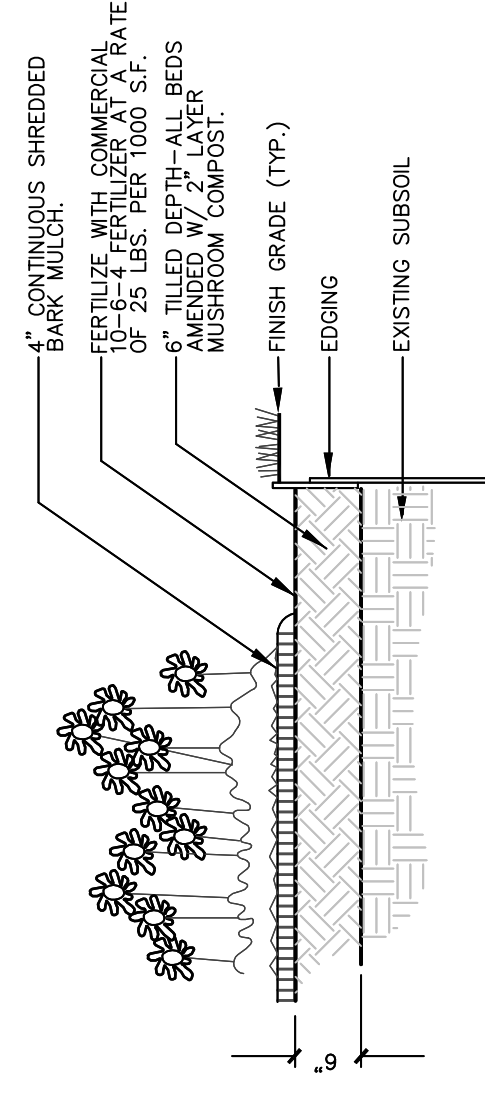




**A**  
TREE PLANTING DETAIL  
L3.0 NO SCALE



**B**  
SHRUB PLANTING DETAIL  
L3.0 NO SCALE



**C**  
PERENNIAL PLANTING DETAIL  
L3.0 NO SCALE

**native seed palette**

**SEDGE MEADOW - SHORT**  
10 LBS/ACRE PLS (60 SEEDS PER SF)  
AGRECOL MIX: SW-SMS

**FLOOD BASIN RAINWATER RENEWAL MIX**  
10 LBS/ACRE PLS (60 SEEDS PER SF)  
AGRECOL MIX: SW-FBRM

**EMERGENT WETLAND MIXED**  
10 LBS/ACRE PLS (60 SEEDS PER SF)  
AGRECOL MIX: SW-EWM

SPECIFIED SEED MIXES AVAILABLE THROUGH THE FOLLOWING:  
AGRECOL, AGRICULTURAL ECOLOGICAL SOLUTIONS  
PH: 608.223.3571 (WWW.AGRECOL.COM)

**native seed notes**

- SEEDING SHALL BE PERFORMED BY A QUALIFIED CONTACTOR WITH EXPERIENCE IN NATURAL AND WETLAND SEEDING INSTALLATION.
- NATIVE PRAIRIE AND BASIN SEEDING SHALL OCCUR IN LATE FALL OR EARLY SPRING, BETWEEN NOVEMBER 15 AND JULY 1. SEEDS SHALL HAVE PROPER STRATIFICATION AND SCARIFICATION TO BREAK SPRING DORMANCY FOR SPRING PLANTING. ALL LEGUMES SHALL BE INOCULATED WITH THE PROPER RHIZOBIA AT THE APPROPRIATE TIME PRIOR TO PLANTING.
- ALL SEED SHALL BE FRESH DRY NEW SEED CROP TESTED FOR PURITY AND GERMINATION AND MIXED IN PROPORTIONS BY WEIGHT. SEED WEIGHTS SPECIFIED INDICATE WEIGHTS PER ACRE IN PURE LIVE SEED.
- SEED MIXTURES SHALL BE BLENDED BY THE VENDOR AND ACCOMPANIED BY A WRITTEN AFFIDAVIT CERTIFYING COMPOSITION OF SEED MIXTURES AND INTEGRITY OF SEED WITH RESPECT TO SPECIES, VARIETY AND SOURCE.
- TAKE CARE TO COMPLETELY REMOVE ALL EXISTING VEGETATION FROM ALL AREAS THAT ARE TO RECEIVE PRAIRIE OR WETLAND SEEDING. SMOLDER OR TIL EXISTING TURF GRASSES OR APPLY NON-SELECTIVE HERBICIDE SUCH AS ROUND-UP DURING GROWING SEASON. REMOVE ANY CLUMPS OF SOD, THATCH, OR OTHER VEGETATION TO CREATE SMOOTH SEED BED.
- ALL SEED SHALL BE PREFERENTIALLY INSTALLED WITH A RANGELAND TYPE GRASS DRILL OR NO-TILL PLANTER, SUCH AS A TRUAX OR EQUIVALENT. PRIOR TO STARTING WORK, CALIBRATE THE SEEDING EQUIPMENT TO SOW SEEDS AT THE PROPER SEEDING RATE. EQUIPMENT SHALL BE OPERATED IN A MANNER TO ENSURE COMPLETE AND UNIFORM COVERAGE OF ENTIRE AREA.
- DRILL-SEED SLOPES GREATER THAN 5:1 PARALLEL TO CONTOURS. DRILL-SEED ALL AREAS GREATER THAN 5:1 SLOPE BY DRILLING ONCE AT HALF THE SPECIFIED RATE IN ONE DIRECTION AND AGAIN AT HALF THE SPECIFIED WEIGHT PERPENDICULAR TO THE FIRST TO ENSURE EVEN AND COMPLETE COVERAGE.
- ALL AREAS RECEIVING SWALE SEEDING MIX SHALL BE PROTECTED WITH EROSION CONTROL SLOPE BLANKET. SLOPE BLANKET SHALL BE MACHINE PRODUCED, 100% BIODEGRADABLE MAT OF AGRICULTURAL STRAW OR EXCELSIOR MATERIAL WITH A FUNCTIONAL LONGEVITY OF TWELVE (12) MONTHS. ACCEPTABLE MATERIALS INCLUDE S75BN STRAW BLANKET BY NORTH AMERICAN GREEN, CURLEX 1 EXCELSIOR OR AEC PREMIER STRAW TYPES--G2 BY AMERICAN EXCELSIOR COMPANY.
- ALL SEEDED AREAS SHALL BE MULCHED WITHIN THREE (3) DAYS OF SEEDING. ALL AREAS THAT ARE ON SLOPES GREATER THAN 5:1 THAT ARE NOT COVERED WITH EROSION CONTROL BLANKET SHALL BE MULCHED USING CRIMPED STRAW OR HAY AT A RATE OF 200 POUNDS PER ACRE. CRIMP MULCH WITH A STRAIGHT DISC OR SPECIALIZED CRIMPING ROLLER PULLED AT RIGHT ANGLES TO THE SLOPES. HAY, OR THRESHED STRAW (WHEAT, RYE, OATS, OR BARLEY) SHALL BE SEED FREE FOR HYDRO-MULCH APPLICATION USE. WOODCELLULOSE FIBER WITHOUT ANY TACKIFIER AND CONTAINING NO GROWTH OR GERMINATION INHIBITING FACTORS.
- MOW ALL SEEDED AREAS TO A HEIGHT OF 8"-10" AFTER VEGETATION HAS REACHED A HEIGHT OF 18", AND BEFORE NON-NATIVE SPECIES GO TO SEED DURING THE FIRST TWO MONTHS OF THE GROWING SEASON.

**prairie management plan**

**YEAR ONE**

MOW THE NON-EMERGENT PLANTED AREAS TO A HEIGHT OF 6-8 INCHES, 2-4 TIMES DURING THE EARLY GROWING SEASON, AND AS NEEDED TO CONTROL NON-NATIVE AND INVASIVE SPECIES. MOWING (INCLUDING WEED WHIPPING) SHALL TAKE PLACE PRIOR TO OR CONCURRENT WITH SEEDING. MOWING SHALL BE CONDUCTED BY TRAINED PROFESSIONALS. USE OF A FLAIL MOWER IS PREFERRED. AS WEEDS WILL BE CHOPPED DURING MOWING, IF FLAIL TYPT MOWER IS UNAVAILABLE, A ROTARY OR SICKLE BAR MOWER MAY BE USED. CONTROL UNDESIRABLE PLANT SPECIES, WHEN PRESENT IN SMALLER QUANTITIES, BY HAND PULLING PRIOR TO DEVELOPMENT OF A MATURE PLANT. REMOVAL SHALL INCLUDE ALL ABOVEGROUND AND BELOWGROUND STEMS, ROOTS AND FLOWER MASSES WHILE TAKING CARE NOT TO DISTURB DEVELOPING PRAIRIE SEEDLINGS.

**YEAR TWO**

DURING EARLY SPRING OF THE SECOND YEAR, MOW ALL STANDING RESIDUAL VEGETATION AS CLOSE TO THE GROUND AS POSSIBLE. MAKE ANNOTATIONS OF THE VEGETATION TO ENCOURAGE CLOSE PLANNING FOR THE NEXT YEAR. MOWING SHALL BE CONDUCTED BY TRAINED PROFESSIONALS. MOWING (INCLUDING WEED WHIPPING) SHALL BE CONDUCTED 2-4 TIMES DURING THE EARLY GROWING SEASON AND AS NEEDED TO A HEIGHT OF 6 TO 8 INCHES TO PREVENT ANNUAL WEEDS FROM PRODUCING SEED. CONTINUE HERBACIDE APPLICATIONS AS DESCRIBED ABOVE THROUGHOUT SEASON TO CONTROL UNDESIRABLE PLANT SPECIES.

**YEARS THREE -FIVE**

AS IN THE SECOND YEAR, MOW ALL STANDING VEGETATION TO THE GROUND DURING EARLY SPRING. UNDESIRABLE PLANT SPECIES WILL CONTINUE TO BE CONTROLLED AS NECESSARY BY MOWING, HAND-PULLING AND/OR SPOT HERBACIDE APPLICATION. AT THE OWNERS REQUEST, BURNING SHALL BE CONDUCTED BY TRAINED PROFESSIONALS. BURNING SHALL BE CONDUCTED BY STATE AND/OR LOCAL PERMITS SHALL BE EXPERIENCED IN THE FUEL TYPES USED. STATE AND/OR LOCAL AND FIRE DEPARTMENTS OBTAINED PRIOR TO PRESCRIBED BURNING, AND LOCAL POLICE AND FIRE DEPARTMENTS SHALL BE NOTIFIED. INITIAL BURN SHALL BE DEPENDANT ON QUANTITY AND QUALITY OF GRASSES, FORBS, AND SEDGES PRESENT WITHIN THE PLANTING AREA.

A BURN PLAN DESIGNATING PREFERRED WIND DIRECTION AND SPEED, LOCATION OF FIREBREAKS, AND NECESSARY PERSONNEL AND EQUIPMENT SHALL BE PREPARED AND APPROVED BY COLLEGE PRIOR TO BURN IMPLEMENTATION. ANNUAL SPRING MOWING MAY BE SUBSTITUTED FOR PRESCRIBED BURNINGS IF PROHIBITED.