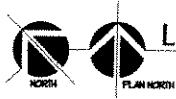
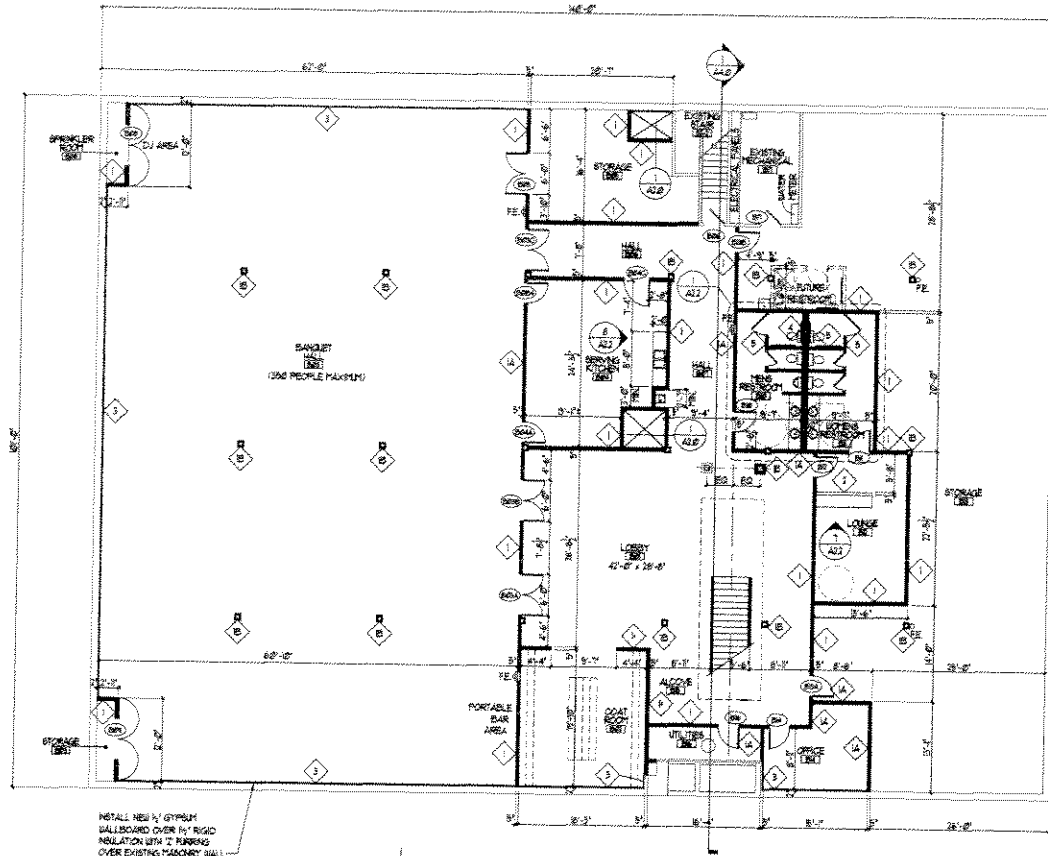


WALL TYPES

- 1 3/4" STEEL STUDS @ 2'-0" O.C. @ 1/2" TYPE 'X' GYPSUM BOARD EACH SIDE TO FLOOR OR ROOF STRUCTURE ABOVE. SAFE WITH SOUND ATTENUATION BATT INSULATION.
- 2 3/4" STEEL STUDS @ 1/2" TYPE 'X' GYPSUM BOARD EACH SIDE. PARTIAL HEIGHT PARTITION TO 7'-0".
- 3 1/2" Z FURRING @ 1/2" TYPE 'X' GYPSUM BOARD @ 1/2" RIGID INSULATION.
- 4 STAGGERED 3/4" STEEL STUDS @ 1'-0" O.C. @ 1/2" TYPE 'X' GYPSUM BOARD EACH SIDE. RESISTANCE GYPSUM BOARD EACH SIDE. 4" SOUND ATTENUATION INSULATION TO FLOOR STRUCTURE ABOVE.
- 5 2 1/2" STEEL STUDS @ 1'-4" O.C. @ 1/2" TYPE 'X' GYPSUM BOARD EACH SIDE. PARTIAL HEIGHT PARTITION TO 6'-0" WITH 7'-0" CLEAR AT SIDE PARTITIONS.
- 6 3/4" STEEL STUDS @ 1'-4" O.C. @ 1/2" TYPE 'X' GYPSUM BOARD INTERIOR & MIL VAPOR BARRIER, 4" BATT INSULATION, 1/2" TYPE 'X' CEMENT BOARD, & 5/8" TERRAZZO PANEL.



LOWER LEVEL FLOOR PLAN

SCALE: 1/8" = 1'-0"

A:\1181\PROJECTS\1181\1181\DWG\1181\1181_11.dwg 11/11/2010 11:00:00 AM

