



# Historic Preservation Commission Meeting July 15, 2014

- Good Afternoon!  
Please sign in at the door
- If you wish to speak on an issue or have your opinion noted by the commission, please fill out a form at the door and hand it to us

**PUBLIC HEARING**

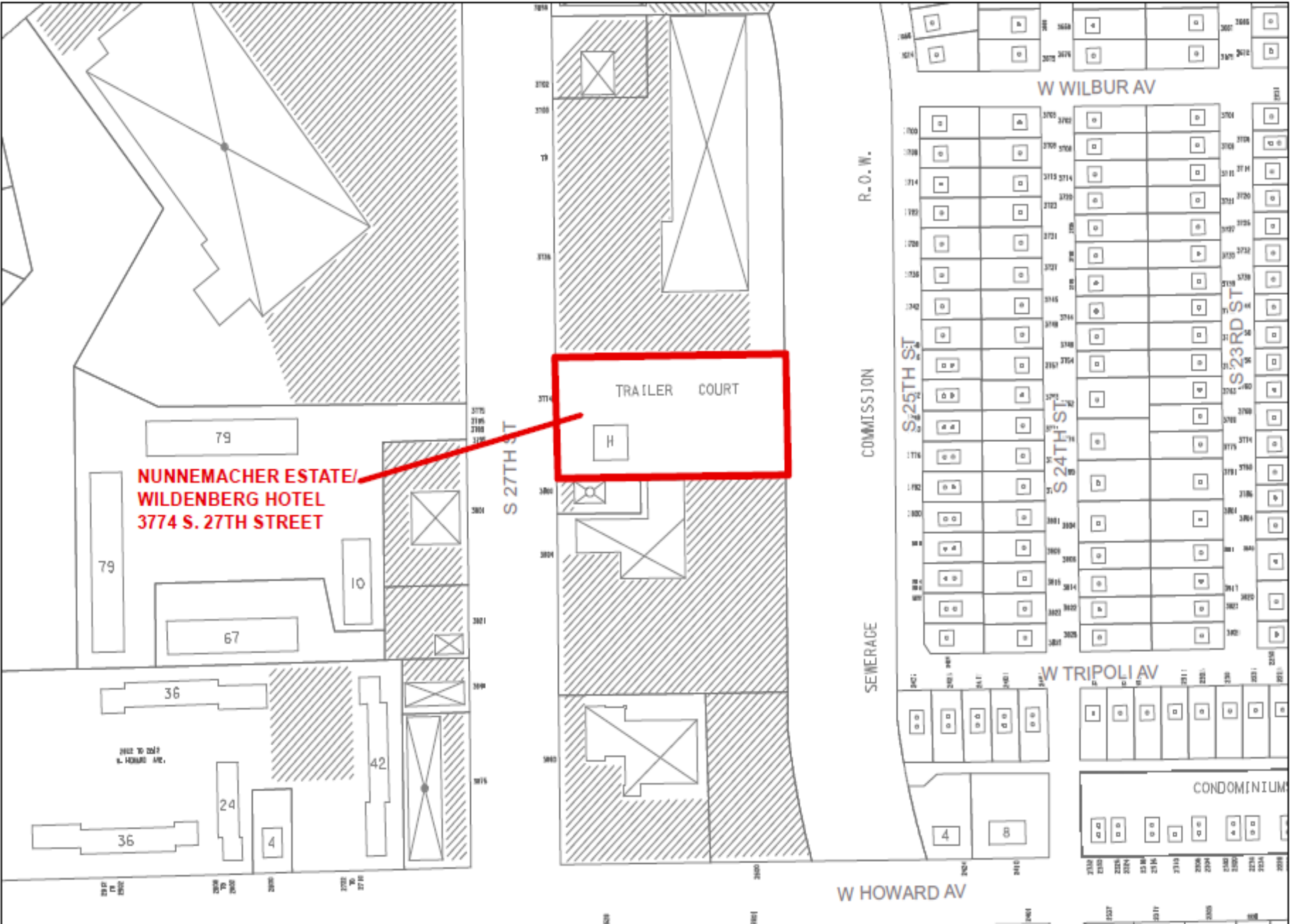
**ON THE HISTORIC DESIGNATION**

**OF THE**

**JACOB NUNNEMACHER ESTATE /  
WILDENBERG HOTEL**

**3774 SOUTH 27<sup>TH</sup> STREET**

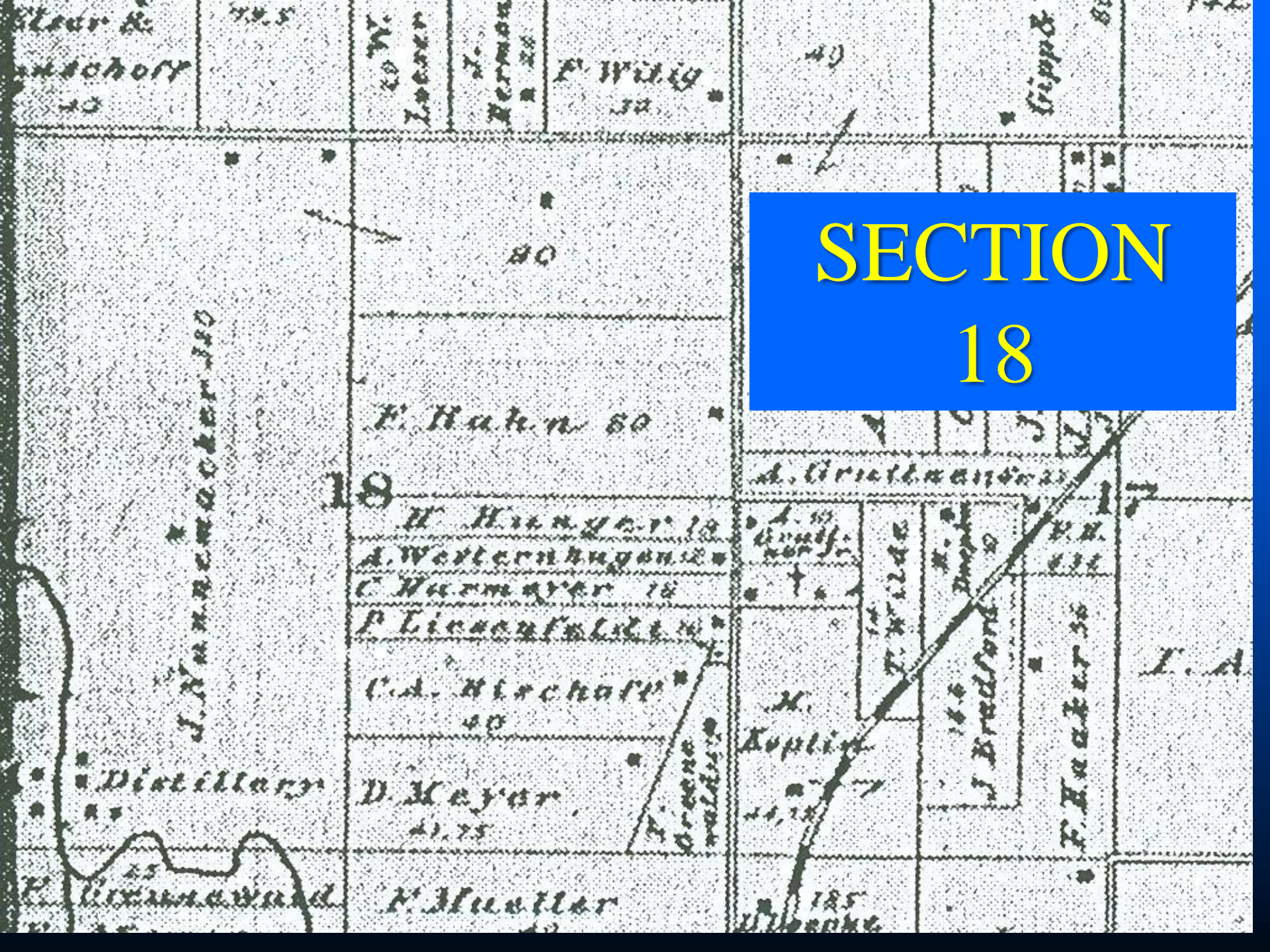
# PROPOSED HISTORIC DESIGNATION NUNNEMACHER ESTATE/WILDENBERG HOTEL - 3774 S. 27TH STREET



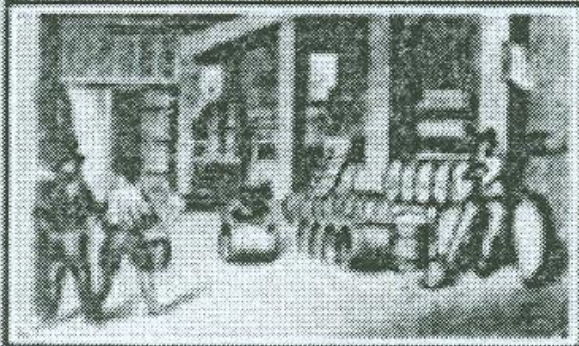
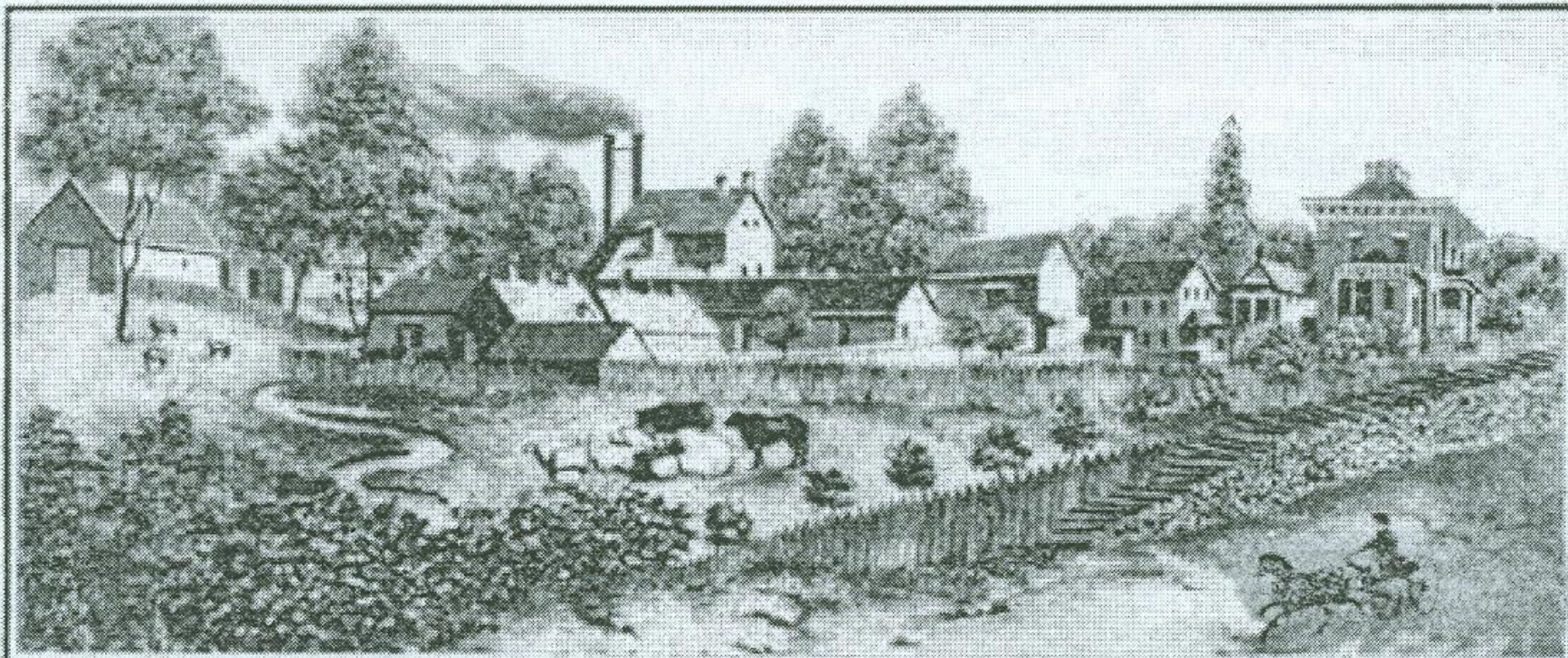


PORTRAIT  
JACOB  
NUNNEMACHER

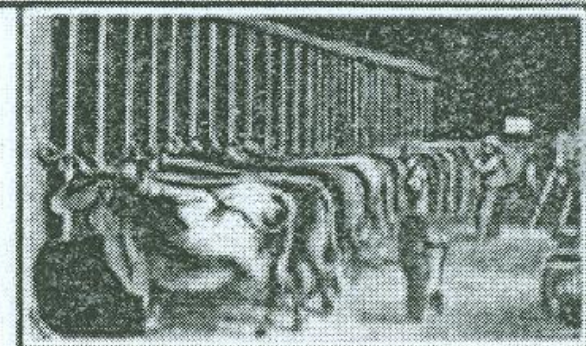
# SECTION 18



PIONEER JACOB NUNNEMACHER DISTILLERY (1842-1862)



Jacob Nunnemacher's  
DISTILLERY,  
TOWN LAKE,  
MILWAUKEE COUNTY  
Office  
Cor. E. Water & Oneida Sts.  
MILWAUKEE, WIS.



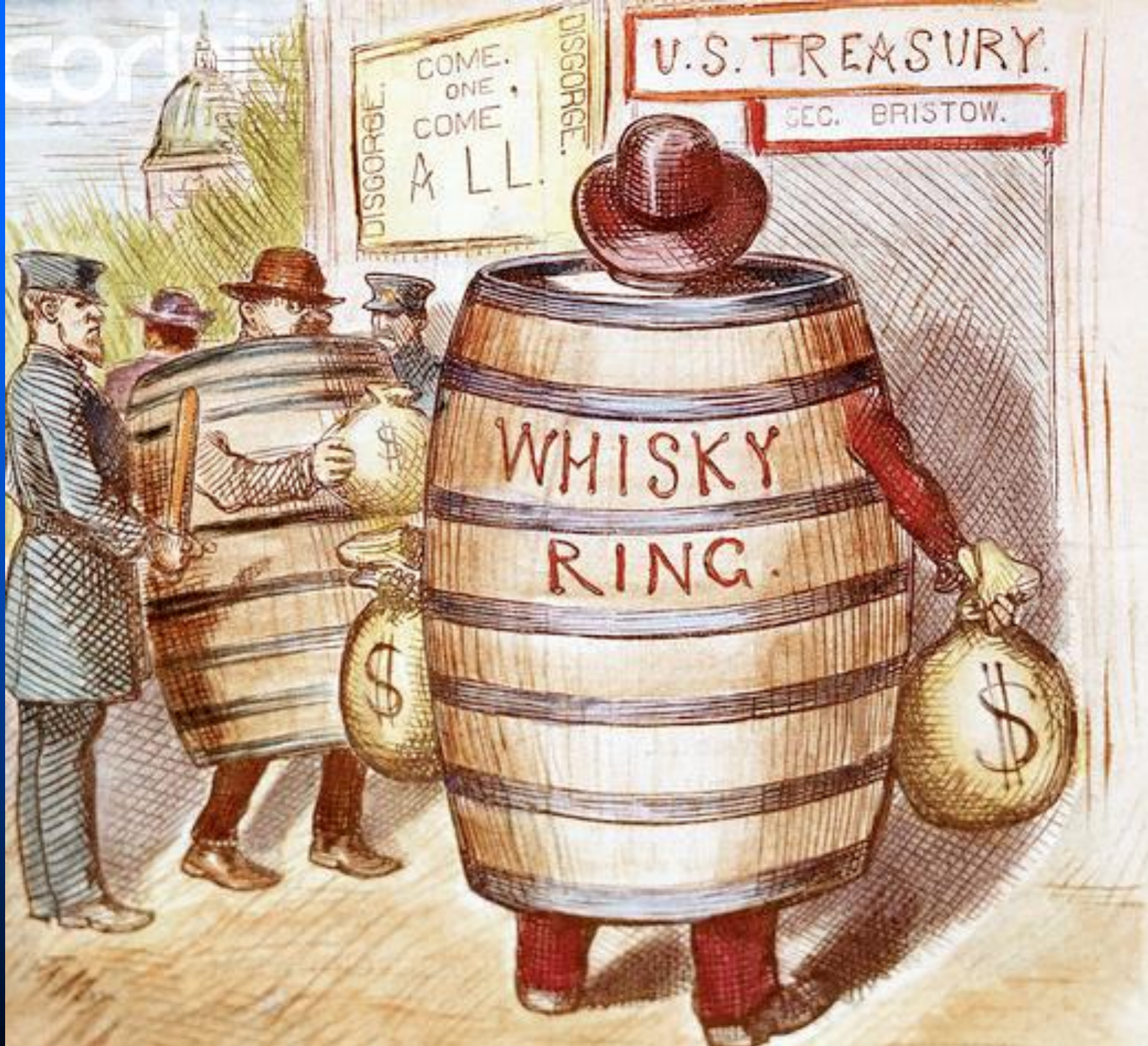
NOW THE EVERGREEN CAMP, 3774 SO. 27TH ST., MILWAUKEE 7, WIS.

Digital Image © 2004 University of Wisconsin-Milwaukee Libraries

**VIEW OF GROUNDS 19<sup>TH</sup> CENTURY  
MADE INTO POSTCARD FOR EVERGREEN CAMP**



**TOWN OF LAKE HOUES WITH MEMBERS OF THE  
NUNNEMACHER FAMILY**



U.S. TREASURY.

SEC. BRISTOW.

DISGORGE.  
COME ONE  
COME  
ALL.

WHISKY  
RING.

\$

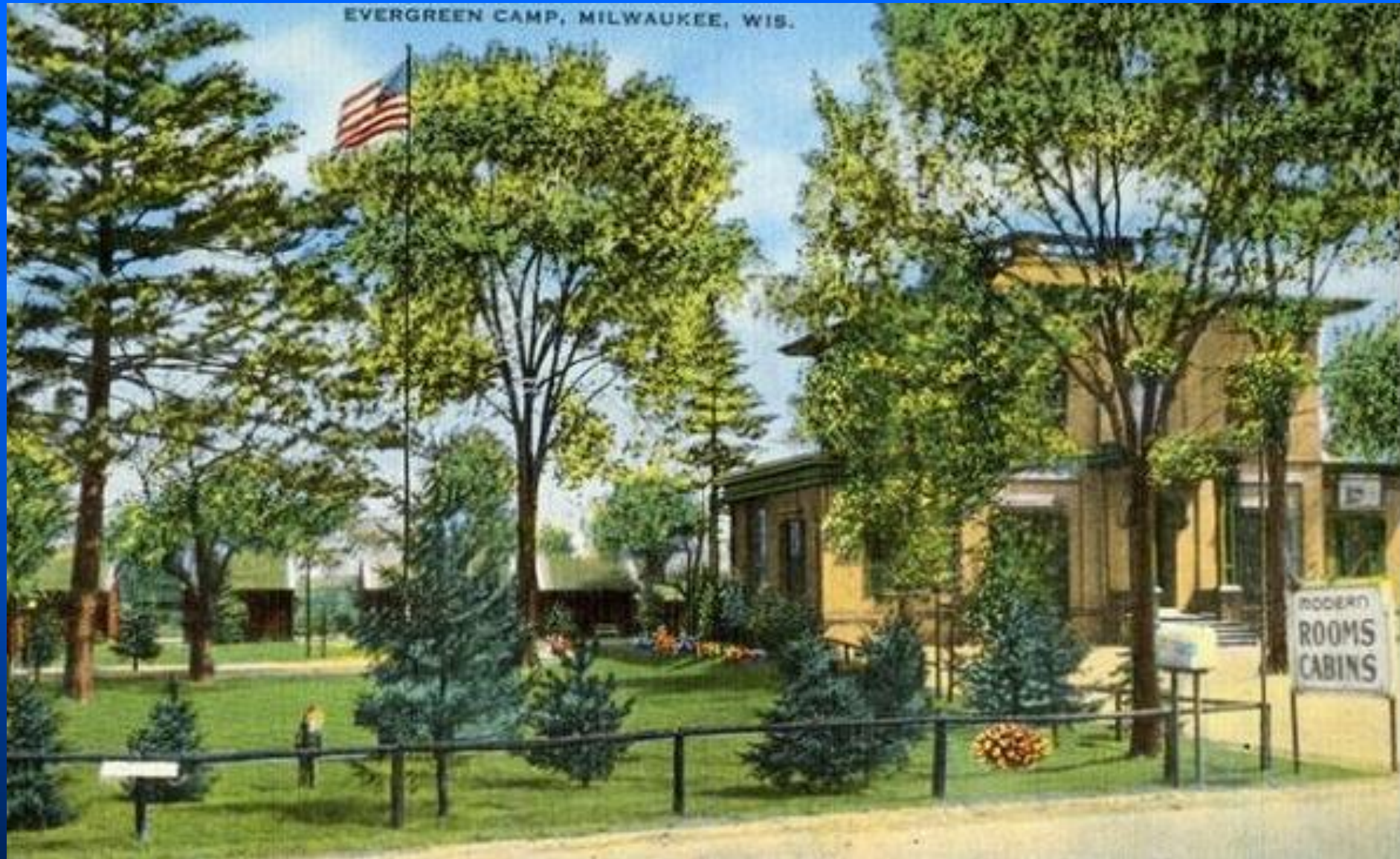
\$





DISTILLERY C. 1932

EVERGREEN CAMP, MILWAUKEE, WIS.





**DENNIS WIERZBA PHOTO  
COLLECTION UWM 1940S**



**DENNIS WIERZBA PHOTO COLLECTION UWM 1940S**

EVERGREEN CAMP, 3774 SO. 27TH ST.,  
MILWAUKEE 7, WIS.



Digital Image © 2004 University of Wisconsin-Milwaukee Libraries

## EVERGREEN CAMP WITH CABINS UWM COLLECTION



Digital Image © 2008 University of Wisconsin-Milwaukee Libraries

**LOUIS J. LEWIS AT BAR IN NORTH PARLOR**



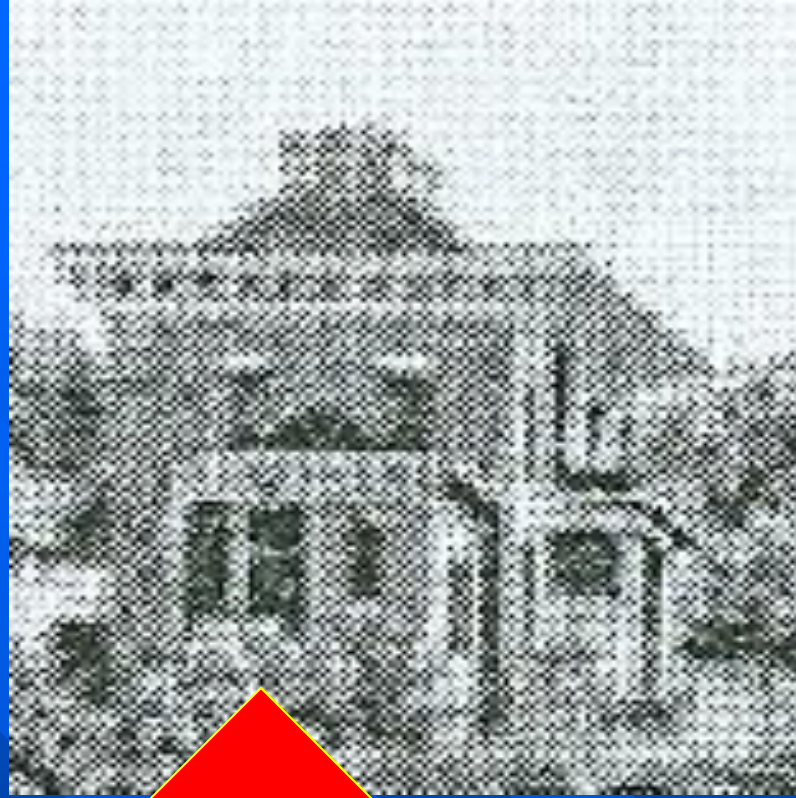
**NUNNEMACHER ESTATE / WILDENBERG HOTEL  
TODAY**











LARGE WINDOWS IN NORTH WING









LARGE KEYSTONE  
ABOVE ENTRY

EVERGREEN









# SOUTH WING ALTERATIONS



LOOKING THROUGH  
ENTRY  
FROM MAIN HALL



NEWEL POST MAIN HALL





**FLOOR DETAIL NORTH PARLOR**



## NORTH PARLOR WINDOW



**PANELED AREA BELOW SOME OF WINDOWS NORTH WING**





**LATCH ON CASEMENT / FRENCH WINDOWS**



**NORTH PARLOR FIREPLACE**



**FIREPLACE  
SOUTH  
PARLOR**



**ORNAMENTAL PLASTER CEILING ABOVE DROPPED CEILING**





## SECOND STORY STAIR HALL



INSIDE ENTRY

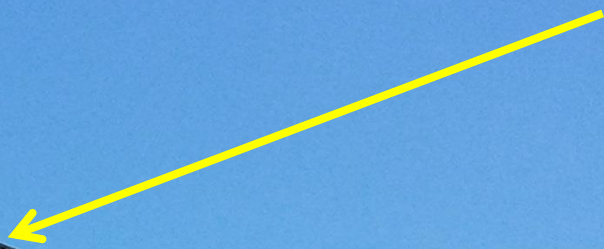






**Vinyl hopper or awning-style  
replacement windows  
608 N. Broadway  
*East Side Commercial Historic  
District***

Applicant:  
Donald Arenson



ONE WAY

STOP

1077

NO LEFT TURN





3<sup>rd</sup> floor

2<sup>nd</sup> floor



Opening made  
into 3 parts



Proposed  
replacement  
window for  
second and  
third floors

# Plaque program

The background of the slide features several thick, parallel diagonal stripes in a medium blue color, extending from the top-left towards the bottom-right.





CERTIFIED LOCAL GOVERNMENT

REVIEW OF THE

NATIONAL REGISTER NOMINATION FOR THE

SQUARE D / INDUSTRIAL CONTROLLER

(JUNIOR HOUSE LOFTS)

AT 710 SOUTH 3<sup>RD</sup> STREET





CERTIFIED LOCAL GOVERNMENT REVIEW  
OF THE  
NATIONAL REGISTER NOMINATION  
FOR THE PITTSBURGH PLATE GLASS  
HISTORIC DISTRICT



**WRC**  
TECHNOLOGIES, INC.  
300 S. BARCLAY ST.

OREGON

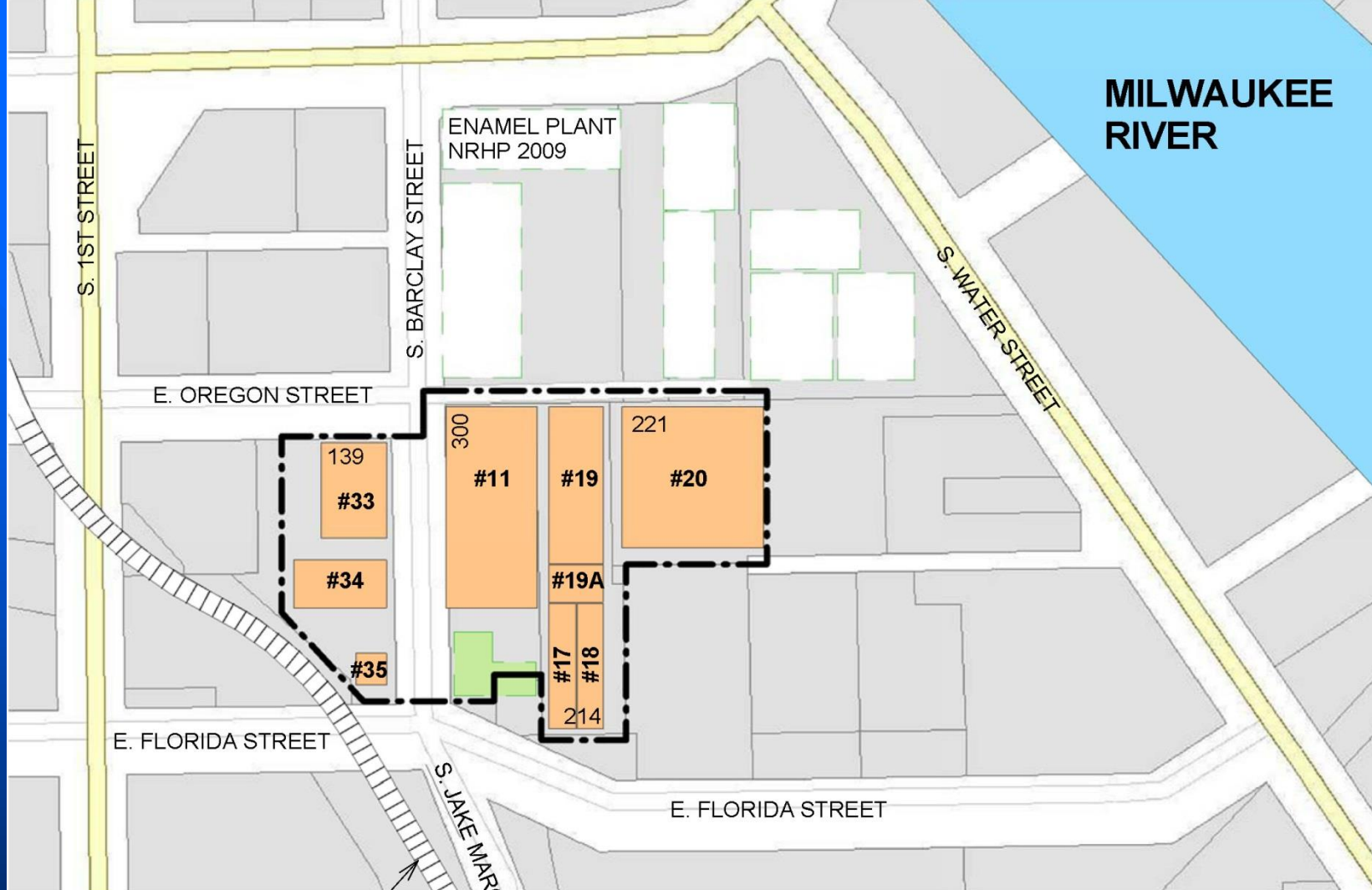




Conway

Con





MILWAUKEE RIVER

ENAMEL PLANT NRHP 2009

S. 1ST STREET

S. BARCLAY STREET

S. WATER STREET

E. OREGON STREET

E. FLORIDA STREET

E. FLORIDA STREET

SOO LINE RAILROAD

S. JAKE MARCHESE



--- PROPOSED PPGHD BOUNDARY

■ CONTRIBUTING BUILDINGS

■ DEMOLISHED BUILDINGS

--- ORIGINALLY PART OF PPG CAMPUS, NOT INCLUDED IN PROPOSED PPGHD

**REFERENCE MAP**

SCALE: 1:200

