



# Certificate of Appropriateness

Milwaukee Historic Preservation Commission/200 E. Wells Street/Milwaukee, WI 53202/phone 414-286-5712/fax 414-286-3004

**Property**

1239 E. BRADY ST. Brady Street Historic District

**Description of work**

Contractor to install decorative gate between buildings 1235-37 and 1239 E Brady Street. Sign will consist of metal, wire mesh, and ipe wood. Design reflects one large lotus flower in metal cutouts with additional decorative details in metal. Gate will be mounted to concrete posts parallel with the front wall of 1239 E Brady and running directly west to meet the wall of 1235-37 E Brady to prevent pedestrian access between buildings. Gate shall have dimensions of 6 feet in height and 7.5 feet in width.

**Date issued**

11/30/2016

PTS ID 114174 COA: Install metal security gate

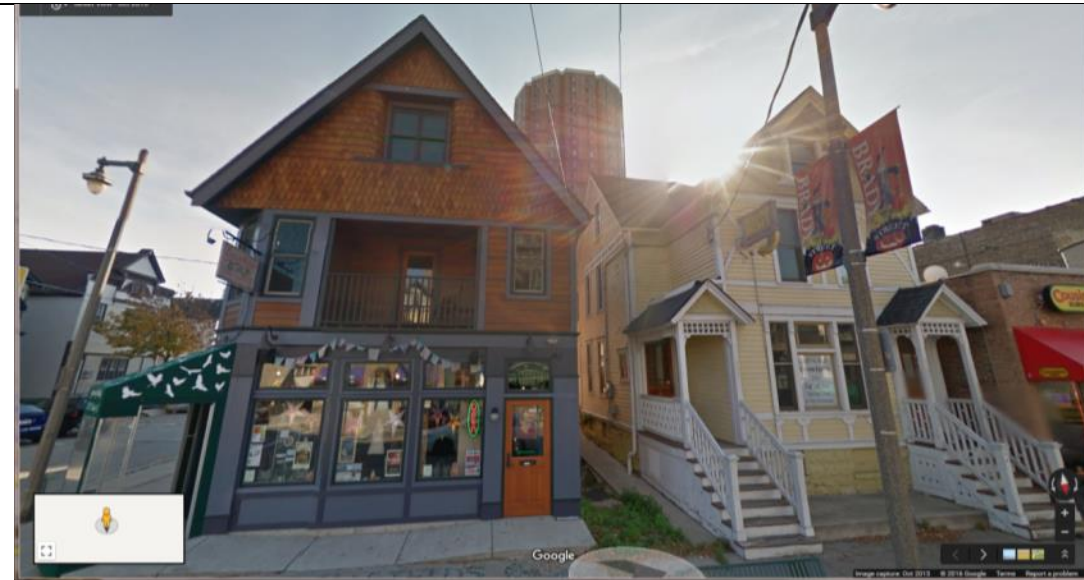
In accordance with the provisions of Section 320-21 (11) and (12) of the Milwaukee Code of Ordinances, the Milwaukee Historic Preservation Commission has issued a certificate of appropriateness for the work listed above. The work was found to be consistent with preservation guidelines. The following conditions apply to this certificate of appropriateness: **Gate may not be physically attached to buildings.**

All work must be done in a craftsman-like manner, and must be completed within one year of the date this certificate was issued. Staff must approve any changes or additions to this certificate before work begins. Work that is not completed in accordance with this certificate may be subject to correction orders or citations. If you require technical assistance, please contact Carlen Hatala of the Historic Preservation staff as follows: Phone: (414) 286-5722 Fax: (414) 286-5722 E-mail: [chatal@milwaukee.gov](mailto:chatal@milwaukee.gov).

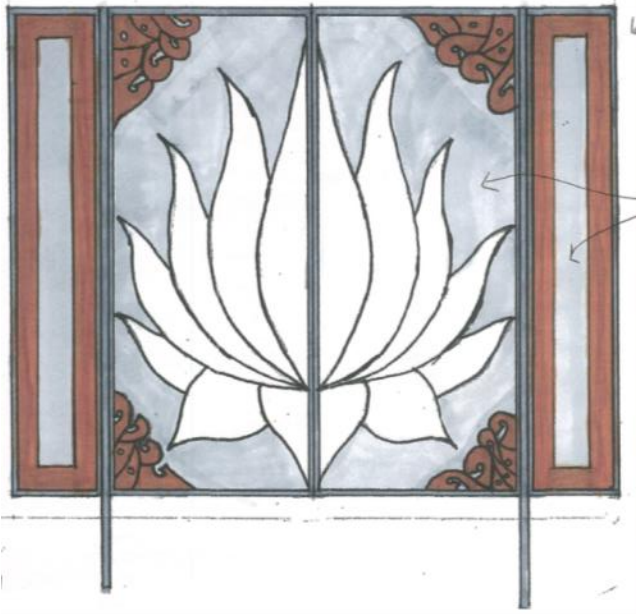
If permits are required, you are responsible for obtaining them from the Milwaukee Development Center. If you have questions about permit requirements, please consult the Development Center's web site, [www.milwaukee.gov/build](http://www.milwaukee.gov/build), or call (414) 286-8210.

City of Milwaukee Historic Preservation Staff

Copies to: Development Center, Ald. Nik Kovac, Contractor, Inspector John Cunningham (286-2538)



Existing conditions. Gate will be placed between the corner building and the yellow duplex in line with the front wall of 1239 E. Brady.



Approximate design of gate. Material is all metal, white areas represent holes in the structure, brown areas represent applied metal details, color in drawing does not relate to finish color of bare white metal/steel.



Mockup of gate in its approved location, not to scale.