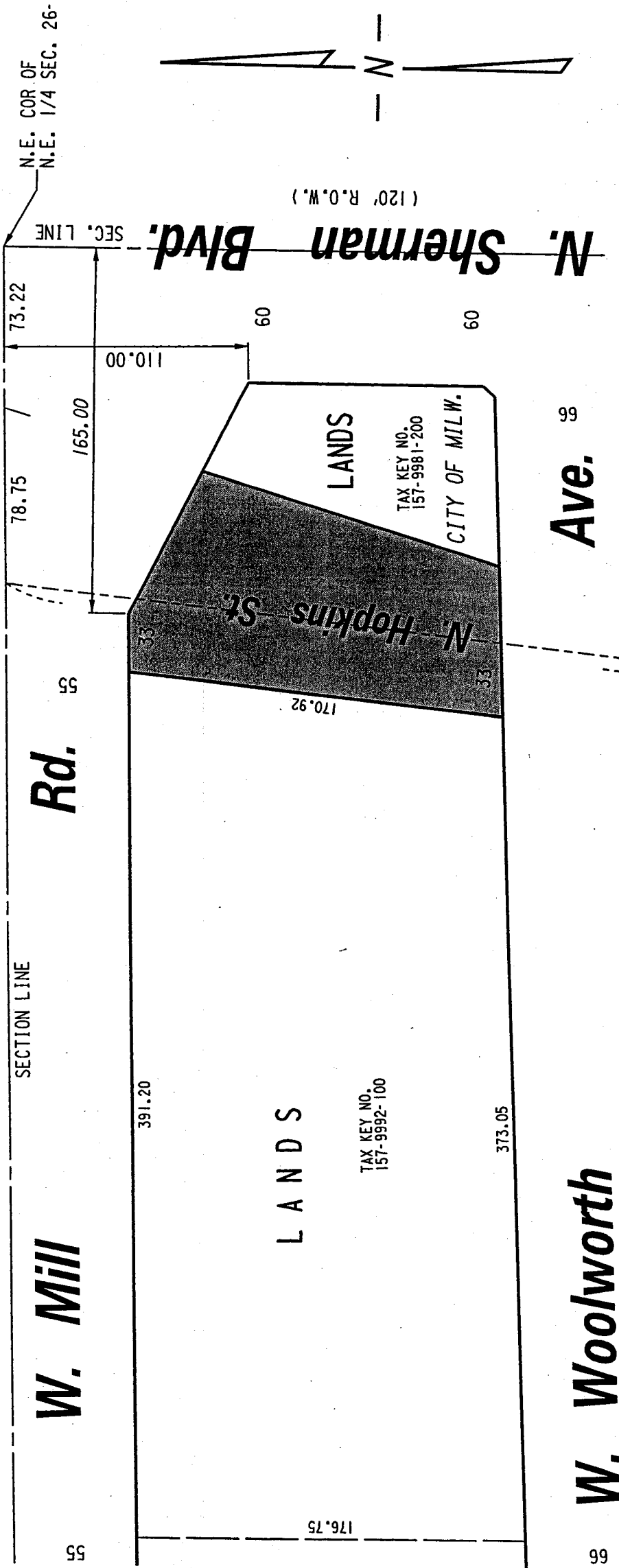


N.E. 1/4 SEC. 26, T.8N., R.21E.

N.E. COR. OF
N.E. 1/4 SEC. 26-8-21



(103' R.O.W.)

SECTION LINE

W. Mill Rd.

55

55

78.75

165.00

73.22

110.00

391.20

LANDS

TAX KEY NO.
157-9992-100

373.05

170.92

N. Hopkins St.

LANDS

TAX KEY NO.
157-9981-200

CITY OF MILW.

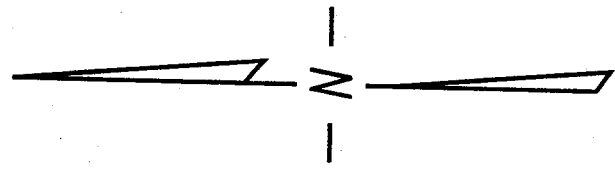
Ave.

66

60

N. Sherman Blvd.

(120' R.O.W.)



W. Woolworth

66

EXHIBIT "A"

FILE NO. 030239

INFRASTRUCTURE SERVICES DIVISION

PUBLIC STREET
PROPOSED TO
BE VACATED



MILWAUKEE, WISCONSIN

ASSIGNED TO: W.E. FUCHS

DRAWN BY: W.E.F.

PROJECT/GRANT NO.: WK52337183

APPROVED BY:

CH'K'D. BY: M.C. WILLIAMS

DATE: JULY 14, 2003

SCALE: 1" = 60'

Marcia Lindholm
CENTRAL DRAFTING & RECORDS MANAGER

Angela Blumke
CITY ENGINEER