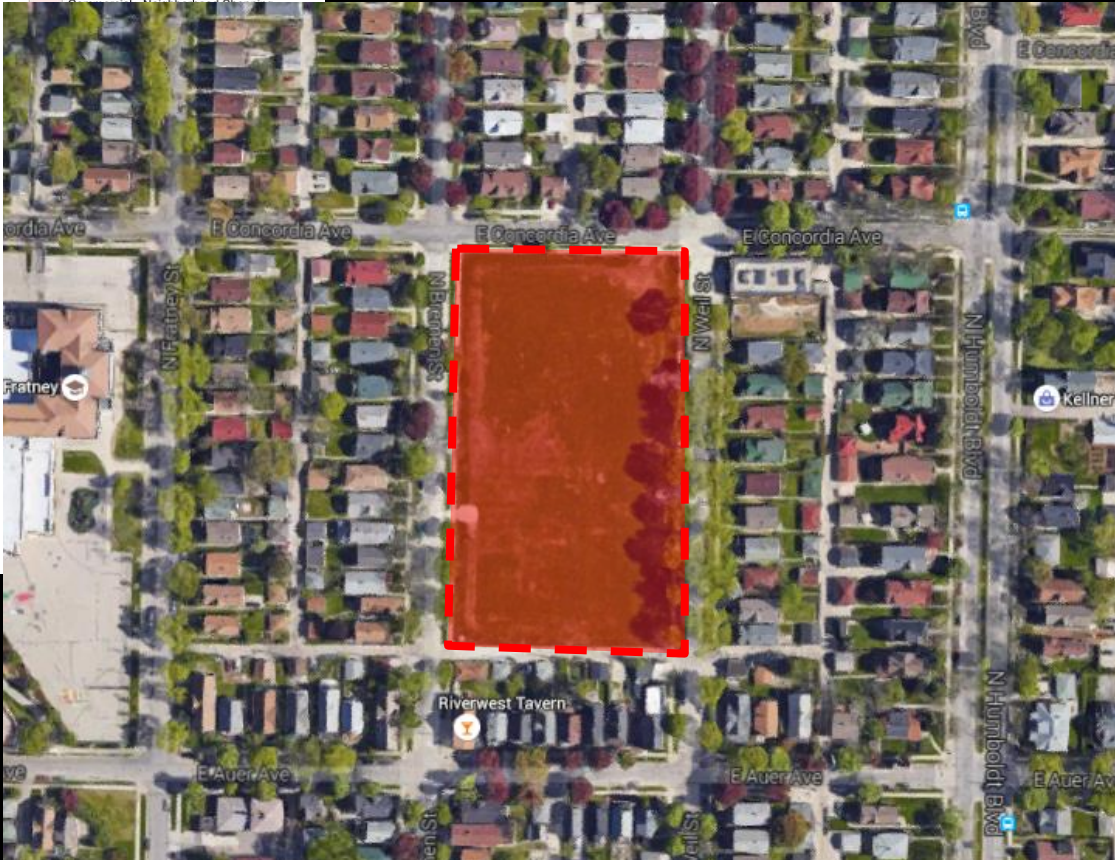


File No. 151553. A substitute ordinance relating to the change in zoning of 18 parks located in the City of Milwaukee from several zoning districts to Parks, in the 3rd, 4th, 9th, 10th, 11th, 13th and 14th Aldermanic Districts.



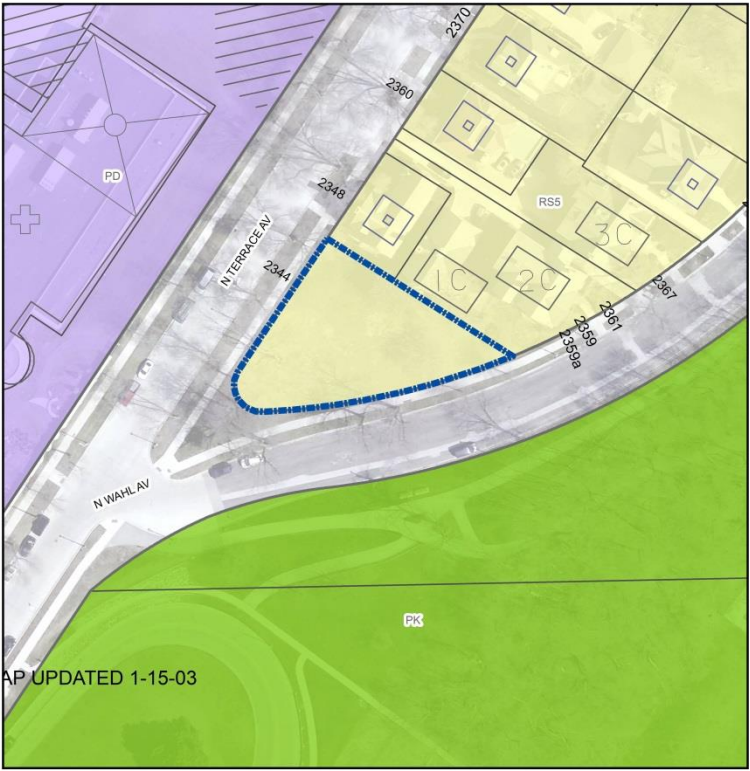
FN 151553 A
PD to PK (Rover West)
March 2016

- Legend**
- Subject Zoning Change
 - Zoning**
 - Commercial - Commercial Service



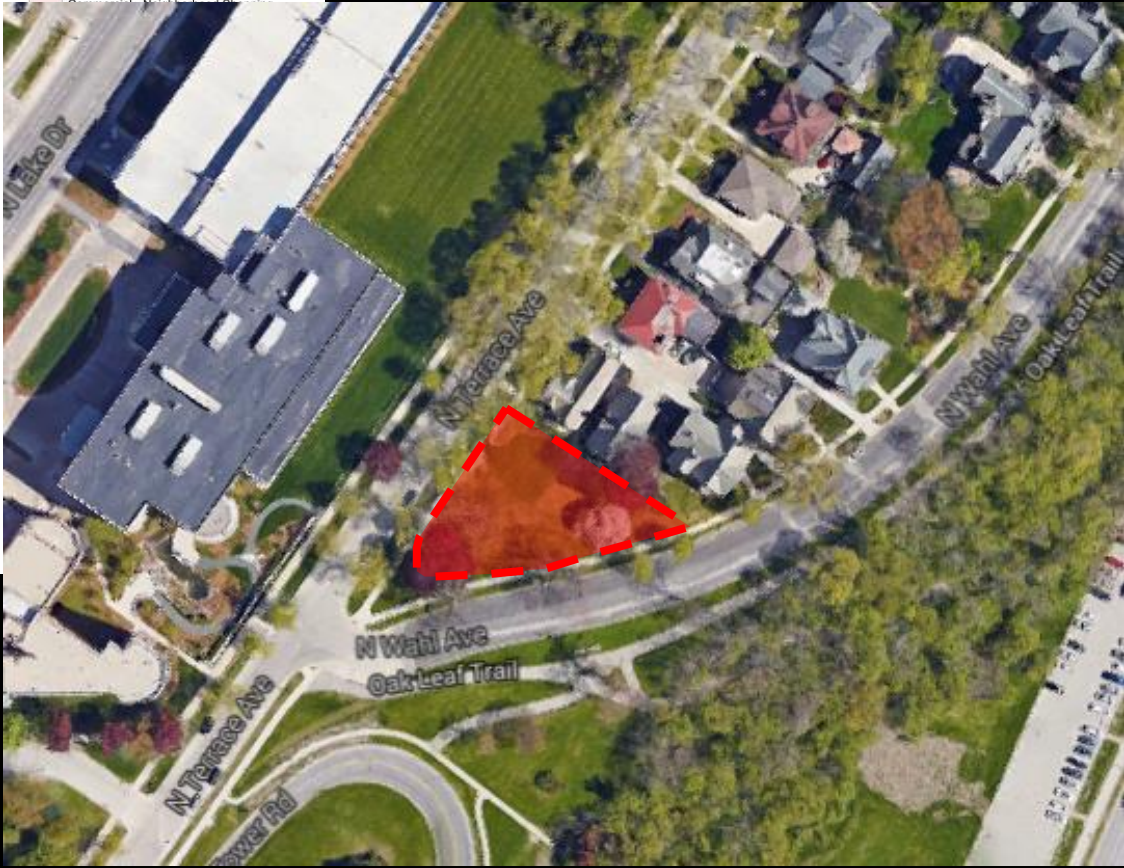
Part of Rover West
3243 North Weil Street

File No. 151553. A substitute ordinance relating to the change in zoning of 18 parks located in the City of Milwaukee from several zoning districts to Parks, in the 3rd, 4th, 9th, 10th, 11th, 13th and 14th Aldermanic Districts.



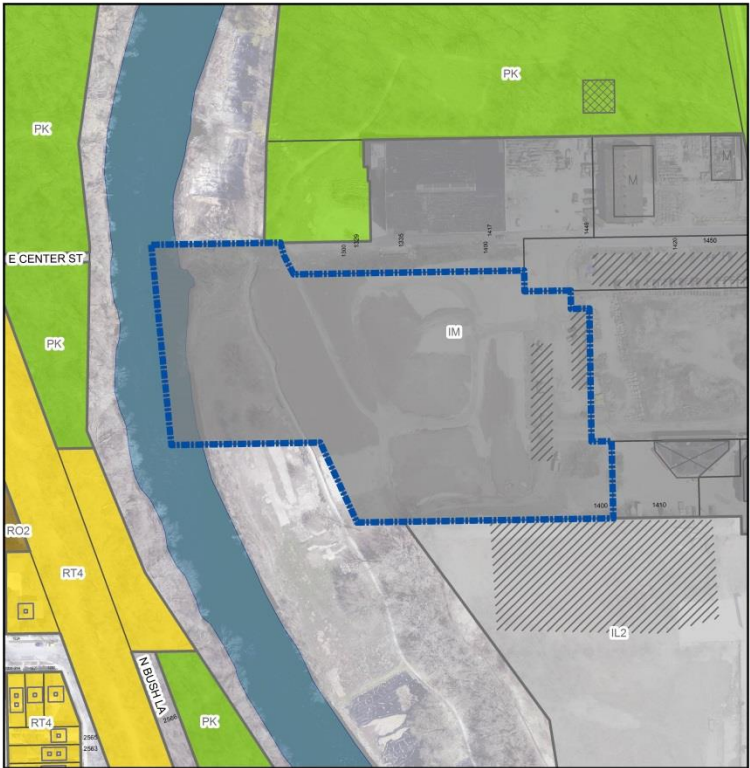
FN 151553 B
RSS to PK (part of Lake Park)
March 2016

- Legend**
- Subject Zoning Change
 - Zoning**
 - Commercial - Commercial Service



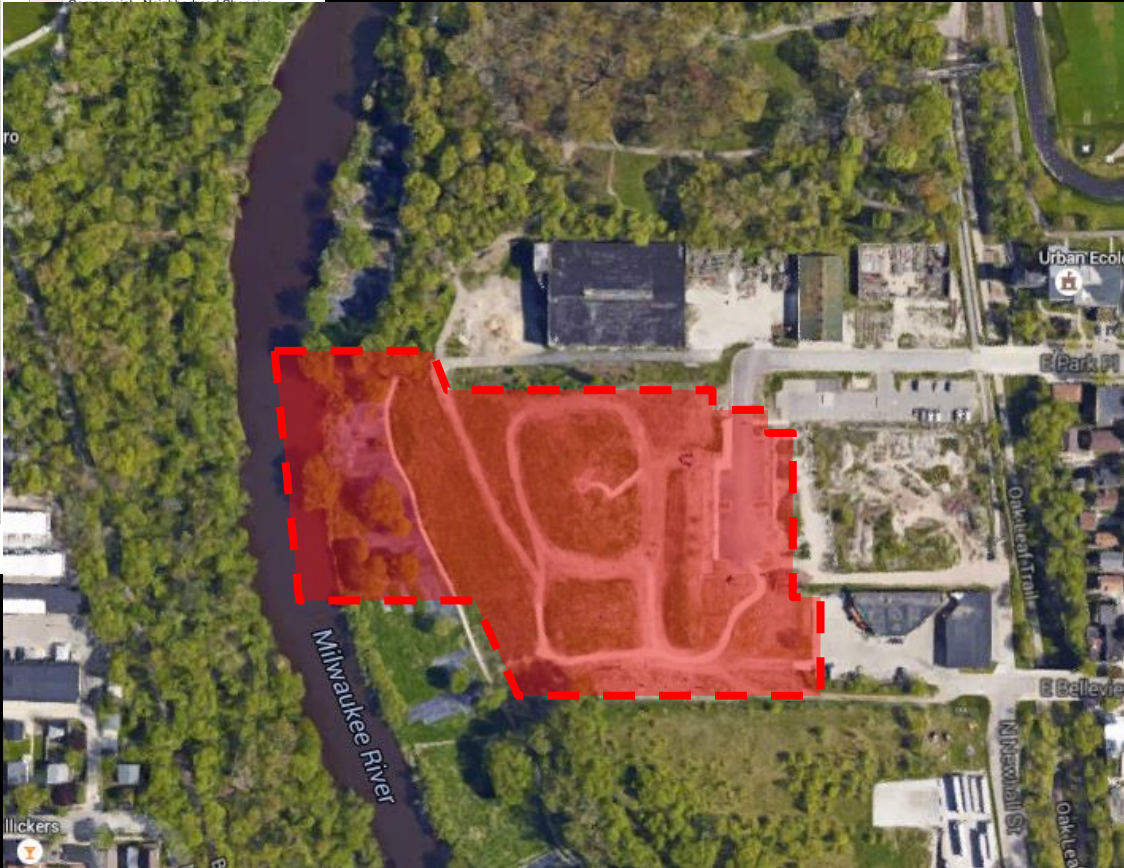
Part of Lake Park
2344 North Terrace Avenue

File No. 151553. A substitute ordinance relating to the change in zoning of 18 parks located in the City of Milwaukee from several zoning districts to Parks, in the 3rd, 4th, 9th, 10th, 11th, 13th and 14th Aldermanic Districts.



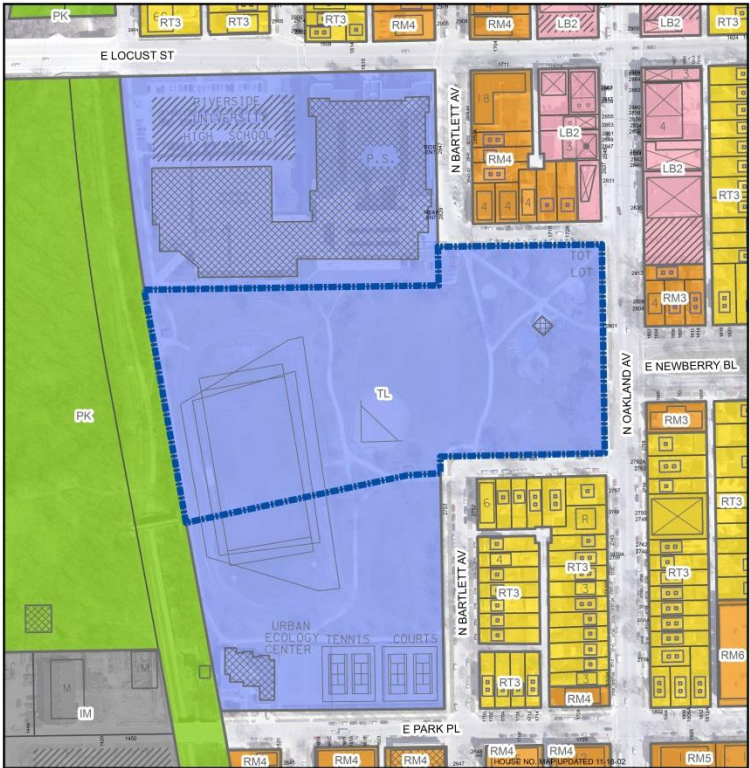
FN 151553 C
IM to PK (Milwaukee Rotary
Centennial Arboretum)
March 2016

Legend
Subject Zoning Change
Zoning
Commercial - Commercial Service



Part of Milwaukee Rotary Centennial Arboretum
1417 East Park Place

File No. 151553. A substitute ordinance relating to the change in zoning of 18 parks located in the City of Milwaukee from several zoning districts to Parks, in the 3rd, 4th, 9th, 10th, 11th, 13th and 14th Aldermanic Districts.



FN 151553 D
TL to PK (Riverside Park)
March 2016

- Legend**
- Subject Zoning Change
 - Zoning**
 - Commercial - Commercial Service




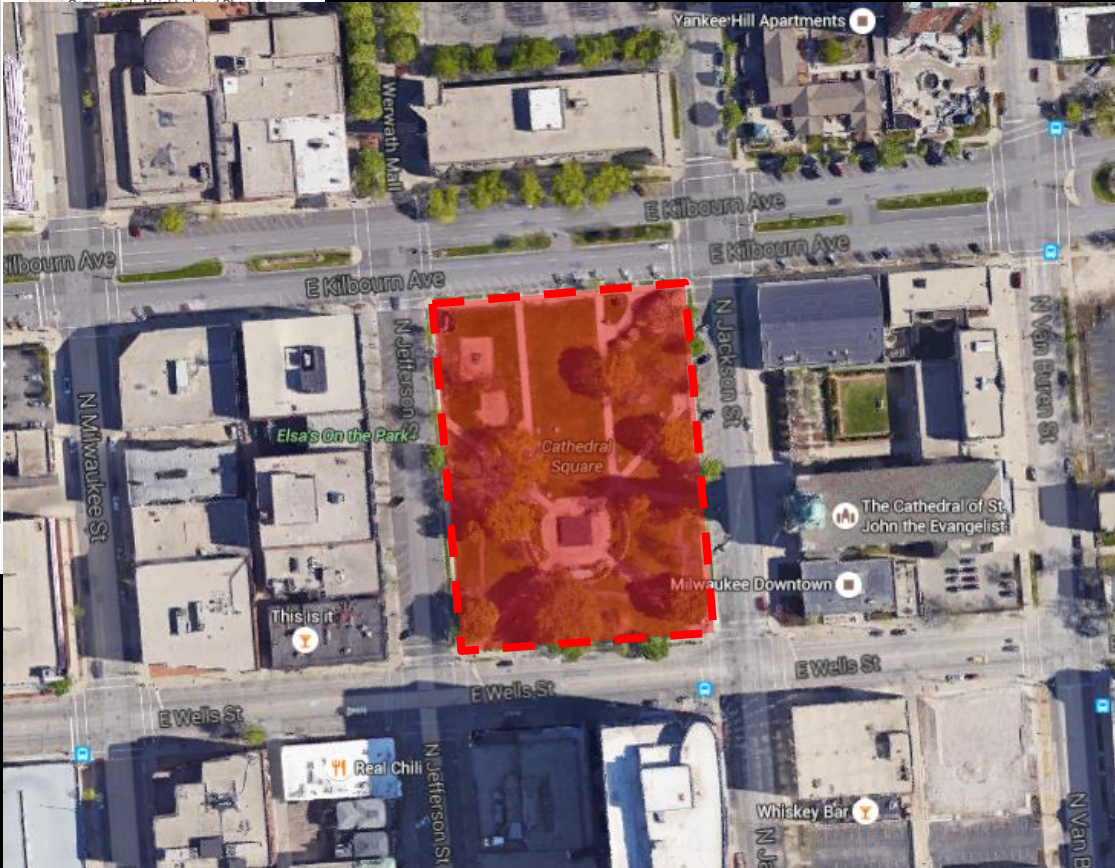
Part of Riverside Park
2801 North Oakland Avenue

File No. 151553. A substitute ordinance relating to the change in zoning of 18 parks located in the City of Milwaukee from several zoning districts to Parks, in the 3rd, 4th, 9th, 10th, 11th, 13th and 14th Aldermanic Districts.



FN 151553 E
 C9F(A) to PK (Cathedral Square Park)
 March 2016

- Legend**
-  Subject Zoning Change
 - Zoning**
 -  Commercial - Commercial Service



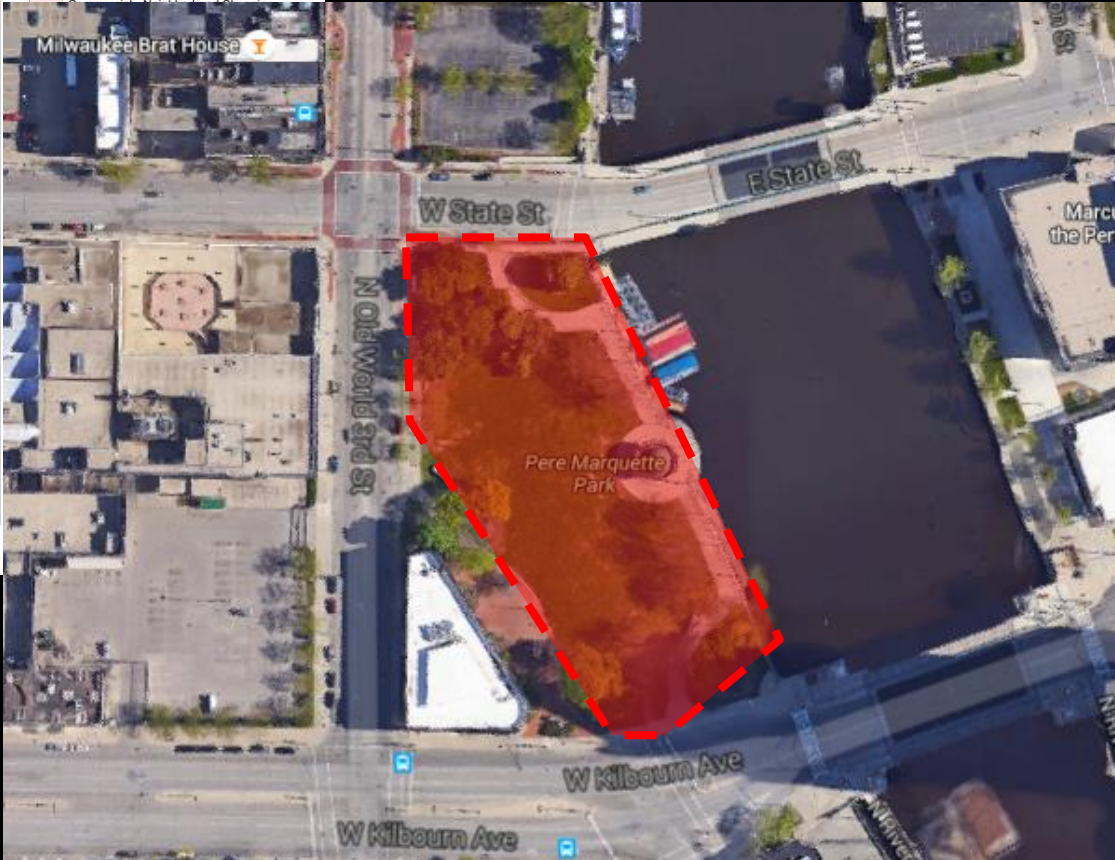
Part of Cathedral Square Park
 520 East Wells Street

File No. 151553. A substitute ordinance relating to the change in zoning of 18 parks located in the City of Milwaukee from several zoning districts to Parks, in the 3rd, 4th, 9th, 10th, 11th, 13th and 14th Aldermanic Districts.



FN 151553 F
C9D(A) to PK (Pere Marquette Park)
March 2016

- Legend**
- Subject Zoning Change
 - Zoning
 - Commercial - Commercial Service





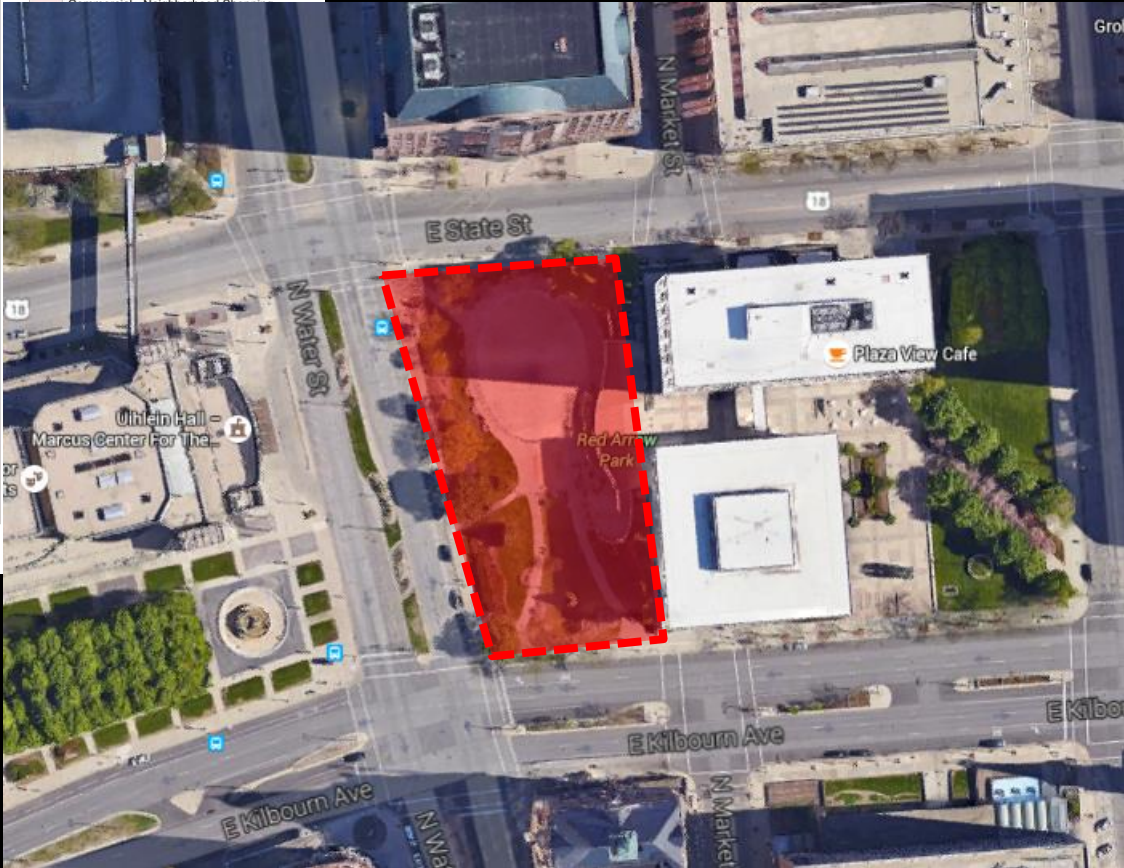
Part of Pere Marquette Park
950 North Old World Third Street

File No. 151553. A substitute ordinance relating to the change in zoning of 18 parks located in the City of Milwaukee from several zoning districts to Parks, in the 3rd, 4th, 9th, 10th, 11th, 13th and 14th Aldermanic Districts.



FN 151553 G
C9D(A) to PK (Red Arrow Park)
March 2016

- Legend**
-  Subject Zoning Change
 -  Zoning
 -  Commercial - Commercial Service



Part of Red Arrow Park
920 North Water Street

File No. 151553. A substitute ordinance relating to the change in zoning of 18 parks located in the City of Milwaukee from several zoning districts to Parks, in the 3rd, 4th, 9th, 10th, 11th, 13th and 14th Aldermanic Districts.



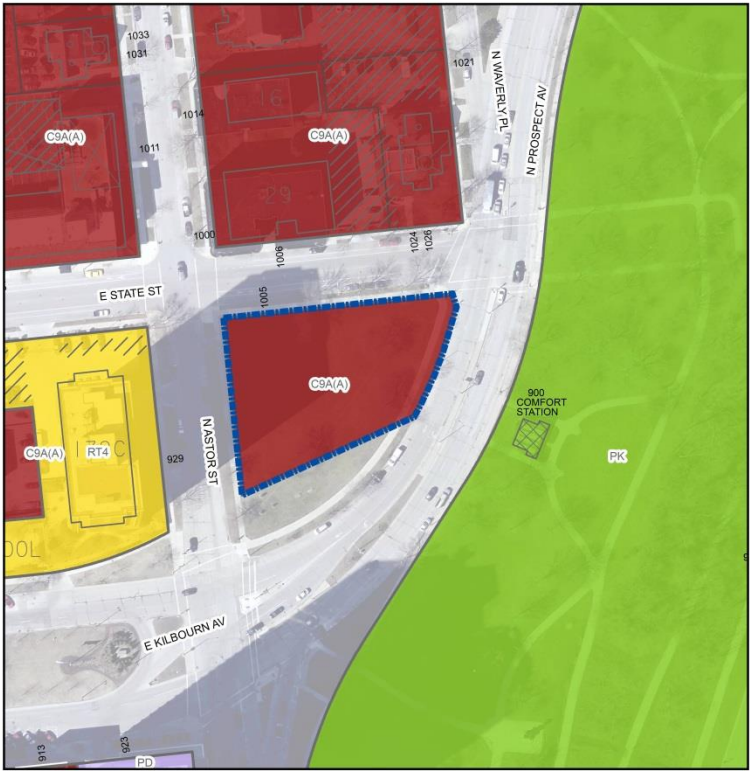
FN 151553 H
C9F(A) to PK (Zeidler Union Square)
March 2016

- Legend**
- Subject Zoning Change
 - Zoning
 - Commercial - Commercial Service



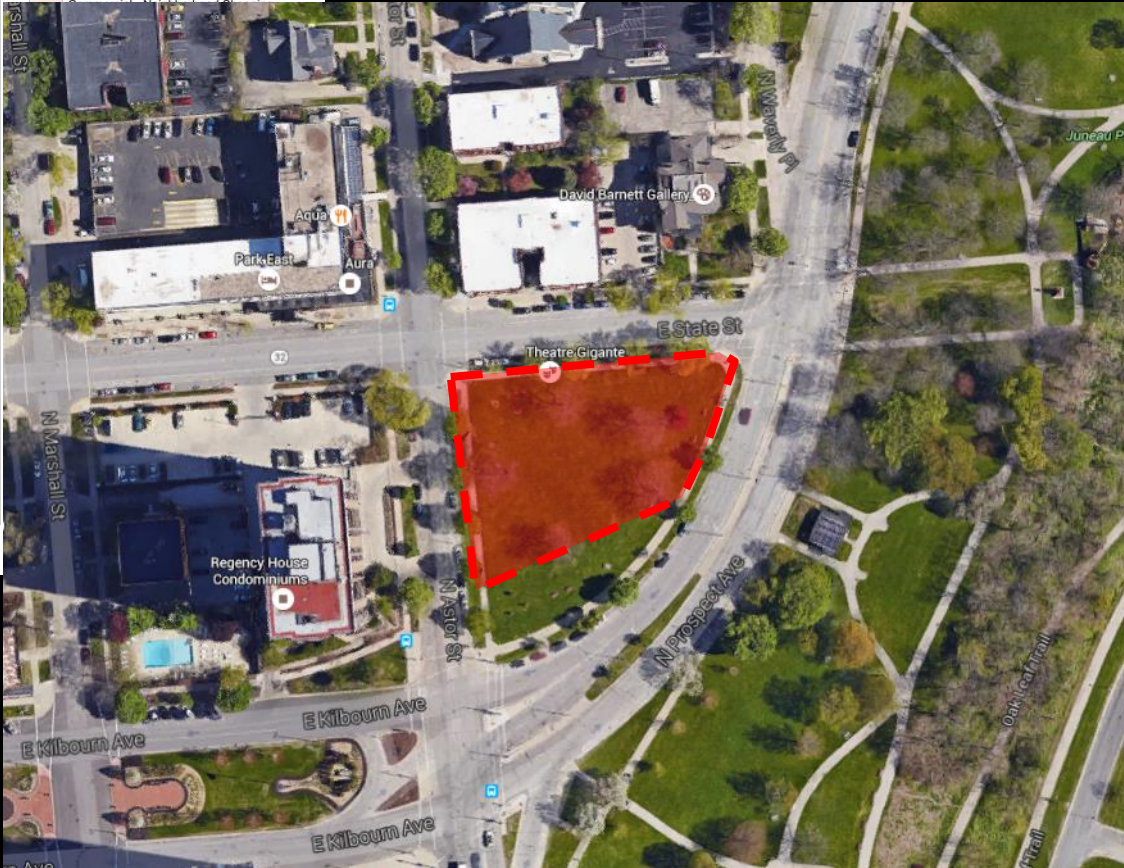
Part of Zeidler Union Square
301-335 West Michigan Street

File No. 151553. A substitute ordinance relating to the change in zoning of 18 parks located in the City of Milwaukee from several zoning districts to Parks, in the 3rd, 4th, 9th, 10th, 11th, 13th and 14th Aldermanic Districts.



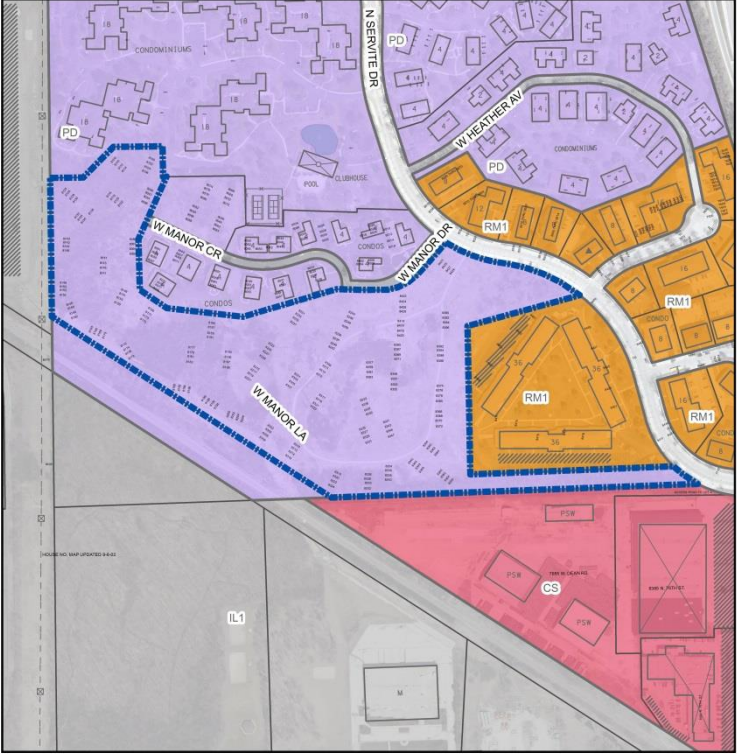
FN 151553 I
C9A(A) to PK (Juneau Park)
March 2016

Legend
Subject Zoning Change
Zoning
Commercial - Commercial Service



Part of Juneau Park
901 North Prospect Avenue

File No. 151553. A substitute ordinance relating to the change in zoning of 18 parks located in the City of Milwaukee from several zoning districts to Parks, in the 3rd, 4th, 9th, 10th, 11th, 13th and 14th Aldermanic Districts.



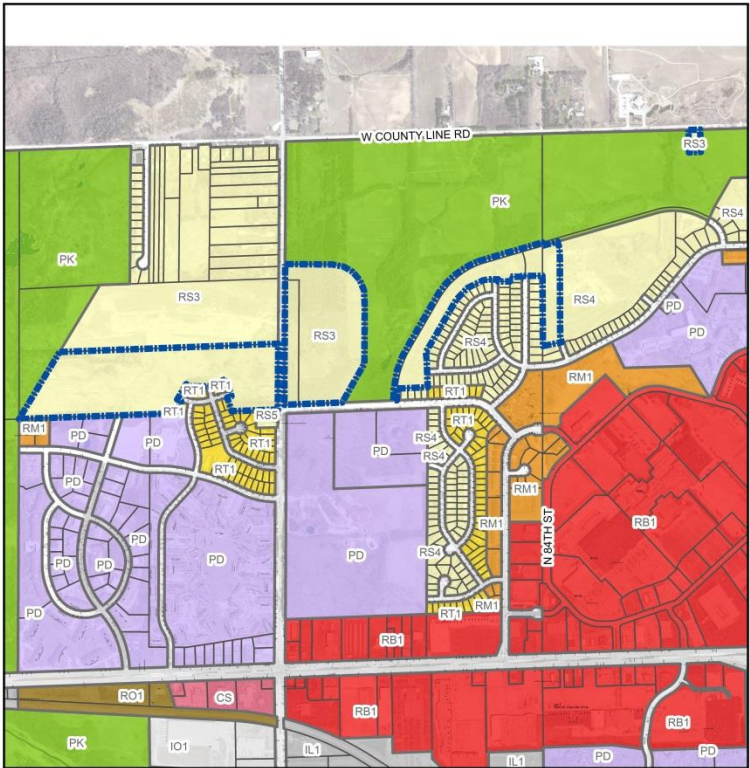
FN 151553 J
 PD to PK (Servite Park Preserve)
 March 2016

- Legend**
- Subject Zoning Change
- Zoning**
- Commercial - Commercial Service
 - Commercial - Neighborhood Shopping
 - Commercial - Local Business



Part of Servite Park Preserve
 8501 North Servite Drive

File No. 151553. A substitute ordinance relating to the change in zoning of 18 parks located in the City of Milwaukee from several zoning districts to Parks, in the 3rd, 4th, 9th, 10th, 11th, 13th and 14th Aldermanic Districts.



FN 151553 K
 RS3 and RS4 to PK (Joseph Lichter Park
 and western part of Kohl Park)
 March 2016

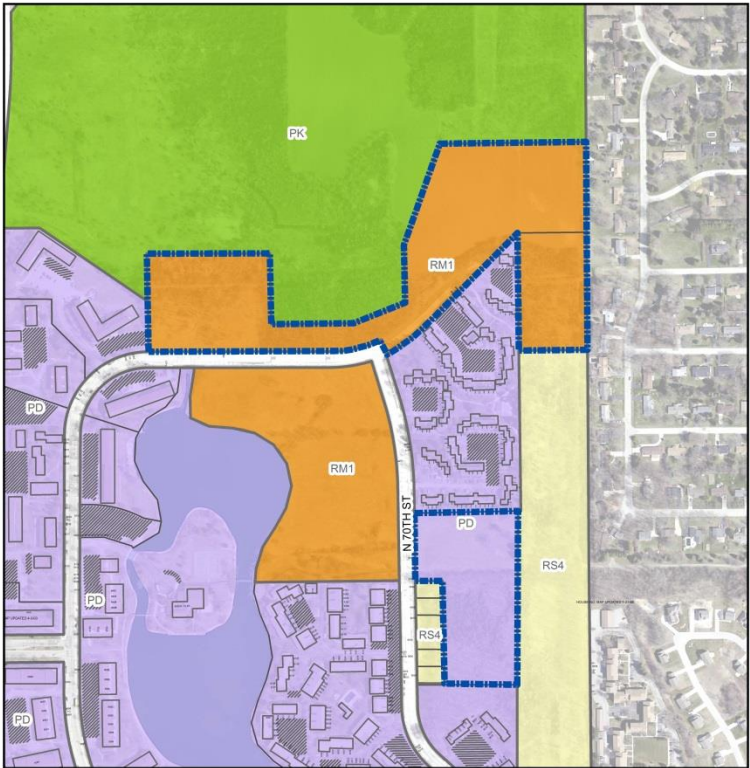
Legend
 Subject Zoning Change
Zoning
 Commercial - Commercial Service



Joseph Lichter Park
 9201 North Swan Road

Part of Kohl Park
 9202 North Swan Road, 9400 North Swan Road,
 9370 North Burbank Avenue, 9217 North 83rd
 Street, 7919 West County Line Road

File No. 151553. A substitute ordinance relating to the change in zoning of 18 parks located in the City of Milwaukee from several zoning districts to Parks, in the 3rd, 4th, 9th, 10th, 11th, 13th and 14th Aldermanic Districts.



FN 151553 L
 RM1 and PD to PK (eastern part
 of Kohl Park)
 March 2016

- Legend**
- Subject Zoning Change
- Zoning**
- Commercial - Commercial Service



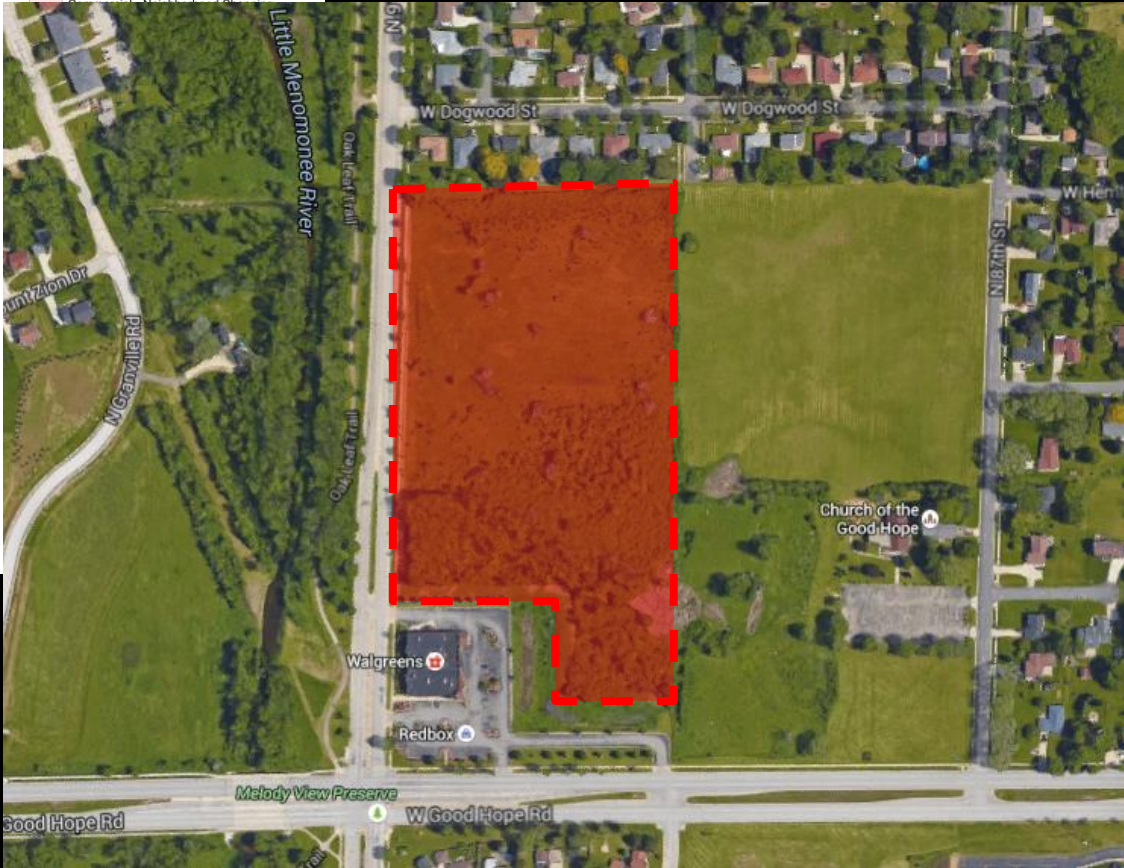
Part of Kohl Park
 6901 West Glenbrook Road, 7400 West Glenbrook
 Road, 9100 North 70th Street

File No. 151553. A substitute ordinance relating to the change in zoning of 18 parks located in the City of Milwaukee from several zoning districts to Parks, in the 3rd, 4th, 9th, 10th, 11th, 13th and 14th Aldermanic Districts.



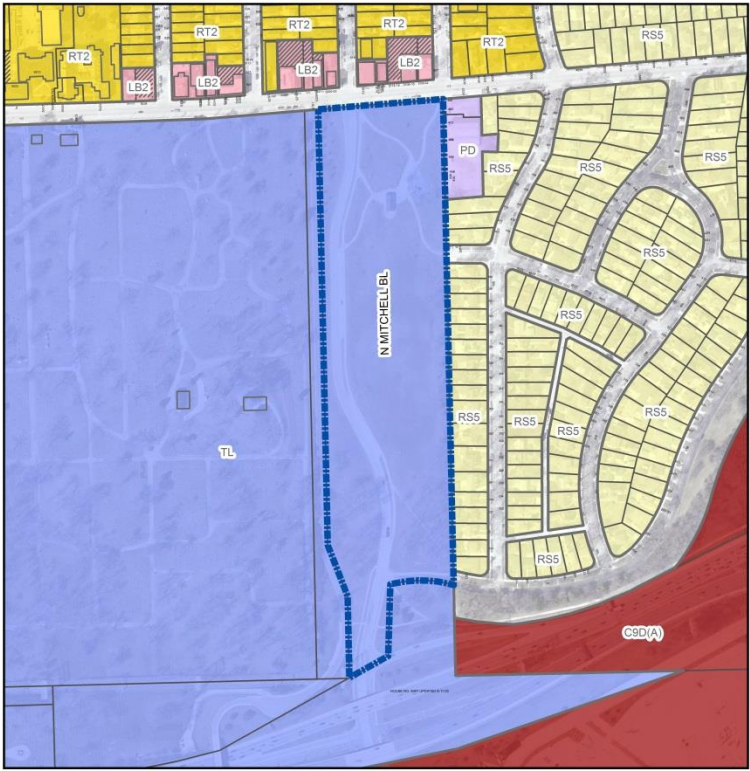
FN 151553 M
RS3 to PK (Melody Preserve)
March 2016

- Legend**
- Subject Zoning Change
 - Zoning
 - Commercial - Commercial Service



Part of Melody Preserve
7300 North 91st Street

File No. 151553. A substitute ordinance relating to the change in zoning of 18 parks located in the City of Milwaukee from several zoning districts to Parks, in the 3rd, 4th, 9th, 10th, 11th, 13th and 14th Aldermanic Districts.



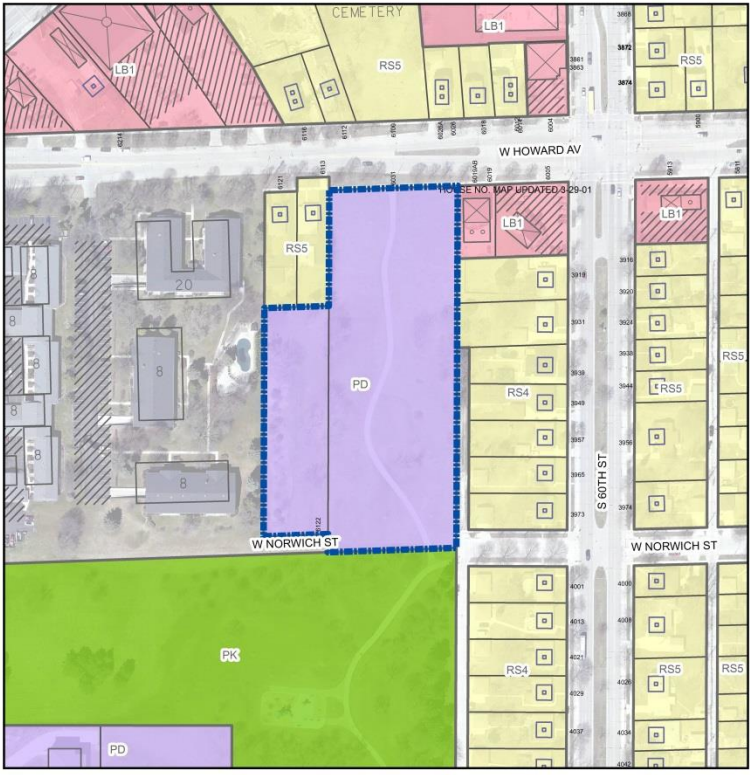
FN 151553 N
TL to PK (Mitchell Boulevard)
March 2016

- Legend**
- Subject Zoning Change
 - Zoning**
 - Commercial - Commercial Service



Part of Mitchell Boulevard
5101 West Blue Mound Road

File No. 151553. A substitute ordinance relating to the change in zoning of 18 parks located in the City of Milwaukee from several zoning districts to Parks, in the 3rd, 4th, 9th, 10th, 11th, 13th and 14th Aldermanic Districts.



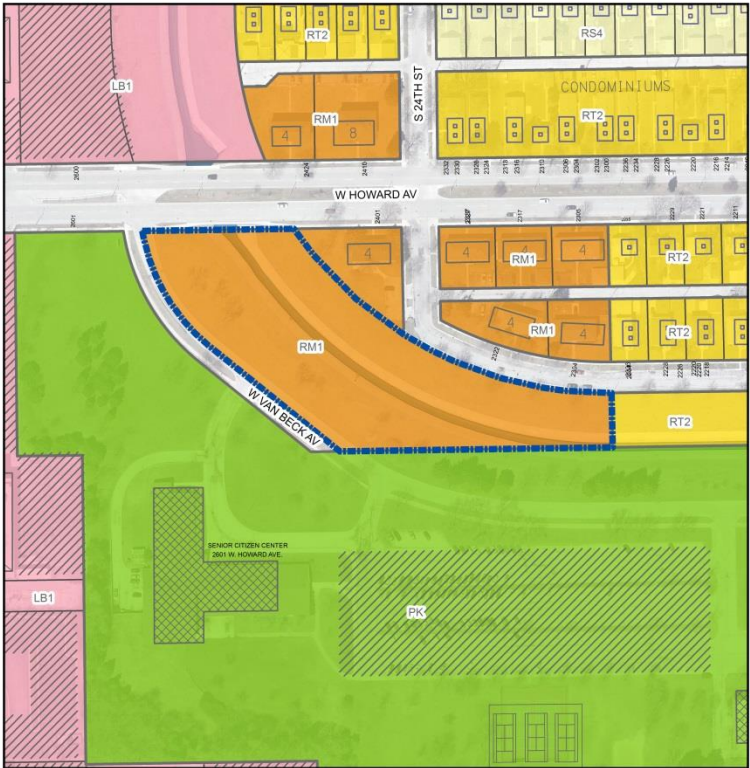
FN 151553 O
PD to PK (Armour Park)
March 2016

- Legend**
- Subject Zoning Change
 - Zoning**
 - Commercial - Commercial Service



Part of Armour Park
6122 West Norwich Street and 6031
West Howard Avenue

File No. 151553. A substitute ordinance relating to the change in zoning of 18 parks located in the City of Milwaukee from several zoning districts to Parks, in the 3rd, 4th, 9th, 10th, 11th, 13th and 14th Aldermanic Districts.



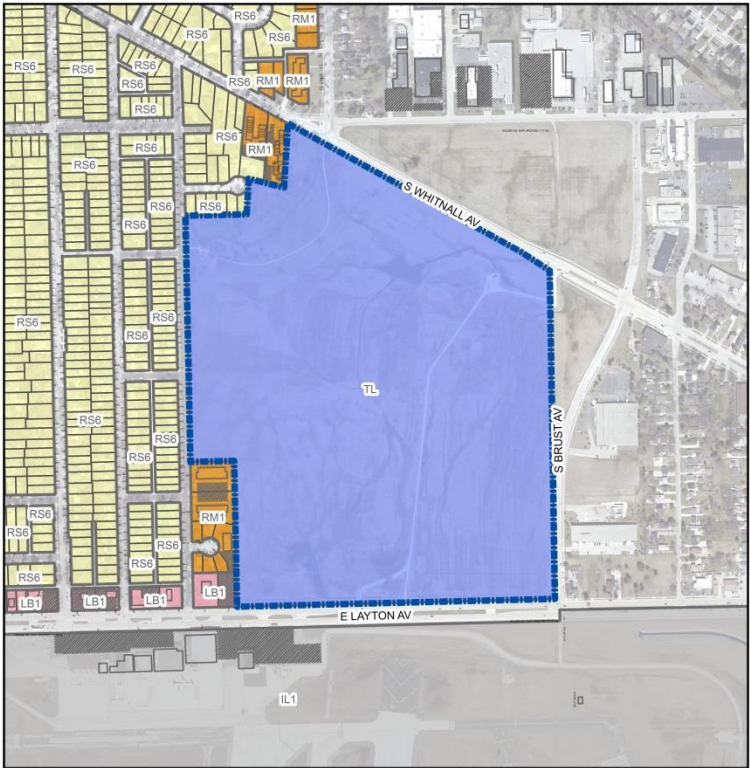
FN 151553 P
RM1 to PK (Wilson Recreation Center)
March 2016

- Legend**
- Subject Zoning Change
 - Zoning
 - Commercial - Commercial Service



Part of Wilson Recreation Center
2501 West Howard Avenue

File No. 151553. A substitute ordinance relating to the change in zoning of 18 parks located in the City of Milwaukee from several zoning districts to Parks, in the 3rd, 4th, 9th, 10th, 11th, 13th and 14th Aldermanic Districts.



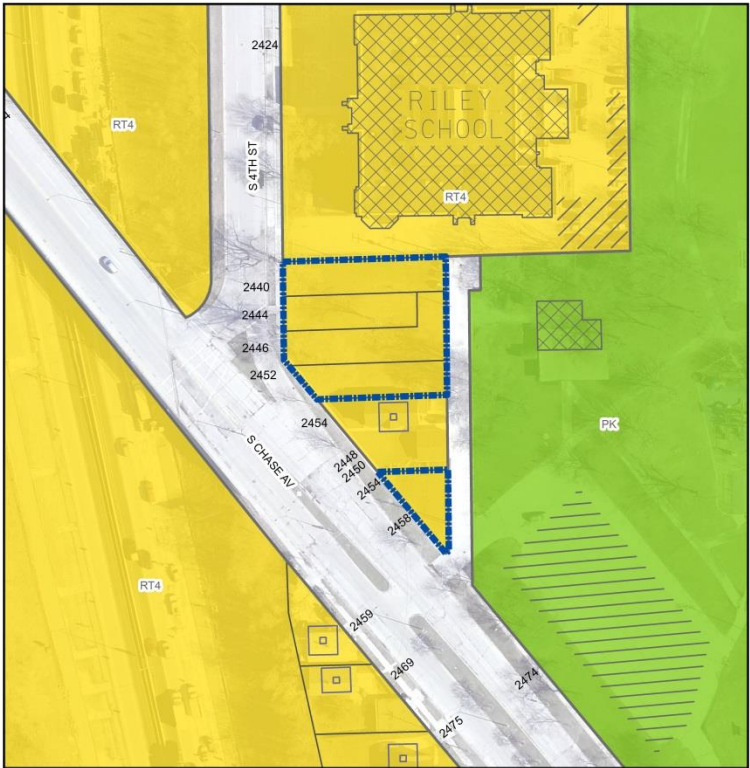
FN 151553 Q
TL to PK (Mitchell Airport Park)
March 2016

- Legend**
- Subject Zoning Change
 - Zoning**
 - Commercial - Commercial Service



Part of Mitchell Airport Park
4401 South Brust Avenue

File No. 151553. A substitute ordinance relating to the change in zoning of 18 parks located in the City of Milwaukee from several zoning districts to Parks, in the 3rd, 4th, 9th, 10th, 11th, 13th and 14th Aldermanic Districts.



FN 151553 R
RT4 to PK (Baran Park)
March 2016

- Legend**
- Subject Zoning Change
 - Zoning**
 - Commercial - Commercial Service



Part of Baran Park
2440 South 4th Street, 2444 South 4th Street, 2446 South 4th Street, 2450 South Chase Avenue, and 2452 South 4th Street