



# Certificate of Appropriateness

Milwaukee Historic Preservation Commission/841 N. Broadway Room B-1, WI 53202/phone 414-286-5722/414-286-5712

**Property**

910 W. JUNEAU AV. Pabst Brewing Company Historic District

**Description of work**

AMPED is a Private Suite Karaoke Bar. There will be a sign on both sides of the corner at Juneau and North 9th Street, illuminated channel letter set with a non-illuminated Swoosh. Both pieces are made of .040 thick aluminum and Lexan faces. The AMPED sign measures 57.7" high by 240" long. The Swoosh is 16.6" at its highest point but reduces in height as it gets closer to the Channel Letters. It will be attached by through bolting it to the fascia. There will be aluminum returns that will help define the letters.

In addition, there will be an Arrow Directional Sign over the main entrance so customers know where to enter. It will be constructed of acrylic with red neon lighting.

**Date issued**

10/6/2022

PTS ID 115333 COA Signage

In accordance with the provisions of Section 320-21 (11) and (12) of the Milwaukee Code of Ordinances, the Milwaukee Historic Preservation Commission has issued a certificate of appropriateness for the work listed above. The work was found to be consistent with preservation guidelines. The following conditions apply to this certificate of appropriateness:

The signage to be fabricated and installed as shown.

All work must be done in a craftsman-like manner, and must be completed within one year of the date this certificate was issued. Staff must approve any changes or additions to this certificate before work begins. Work that is not completed in accordance with this certificate may be subject to correction orders or citations. If you require technical assistance, please contact Carlen Hatala or Tim Askin of the Historic Preservation staff as follows: Phone: (414) 286-5722, (414) 286-5712, [carlen.hatala@milwaukee.gov](mailto:carlen.hatala@milwaukee.gov), or [tim.askin@milwaukee.gov](mailto:tim.askin@milwaukee.gov)

If permits are required, you are responsible for obtaining them from the Milwaukee Development Center. If you have questions about permit requirements, please consult the Development Center's web site, [www.milwaukee.gov/build](http://www.milwaukee.gov/build), or call (414) 286-8210.

*Carle Hatal*

---

City of Milwaukee Historic Preservation Staff

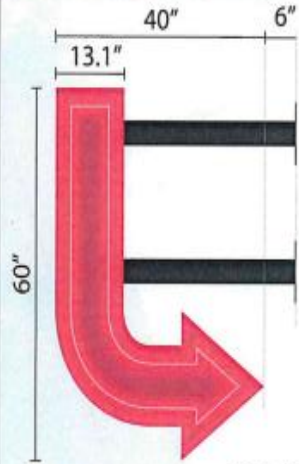
Copies to: Development Center, Ald. Robert Bauman, Contractor



2500 South 170th  
New Berlin, Wisconsin  
Proudly Made in the USA!

Web: [www.bauersignusa.com](http://www.bauersignusa.com)  
Phone: 262-784-0500  
Fax: 262-784-6675

File	Amped
Location	902 W Juneau Ave, MKE
Client	Marla
Sales rep	Paul Butler
Date	cb 08/08/22
Revision	cb 08/11/22, cb 08/17/22, cb 08/19/22, cb 09/14/22, cb 09/15/22



Side 1



Side 2



BEFORE

SURVEY REQUIRED PRIOR TO FABRICATION

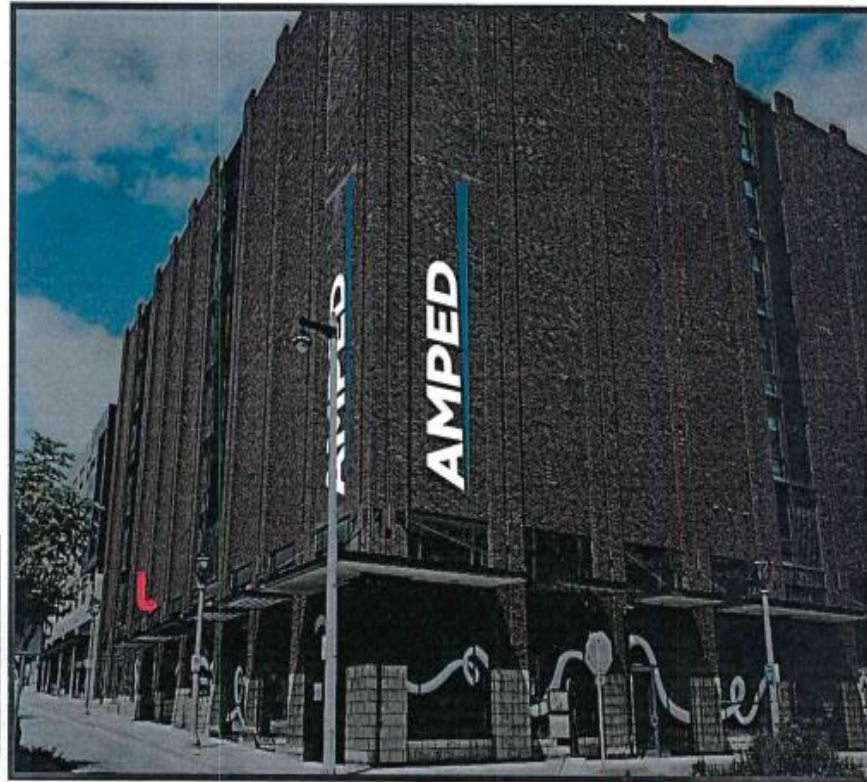


IMAGE FOR ILLUSTRATIVE PURPOSES ONLY, SIZING SUBJECT TO FIELD VERIFICATION

### SPECIFICATIONS

FABRICATE AND INSTALL A D/F WAYFINDING BLADE SIGN, ILLUMINATED WITH DOUBLE STROKE NEON.

- **BLADE** TO BE OPEN FACED CABINET, PAINTED PMS RED 032C WITH CLEAR ACRYLIC FACES
- **ILLUMINATED** WITH DOUBLE STROKE NEON TO BEST MATCH PMS RED 032C
- **INSTALLED** WITH BRACKETS, ABOVE MAIN ENTRANCE

Printed artwork colors are not always representative of final product colors. Please refer to specifications for call out or salesman for samples.

These drawings are the exclusive property of Bauer Sign Company. Not to be duplicated in any way without expressed written permission!

FINAL ELECTRICAL  
CONNECTION IS CLIENT'S  
RESPONSIBILITY

Our products are certified by:  
Underwriters Laboratories, Inc.

This sign shall be manufactured in accordance with the Article 608 of the National Electrical Code and the applicable fire codes. This includes proper grounding and bonding of the sign. Sign shall bear UL E-Listed label.

Scale: 1/2" = 1'

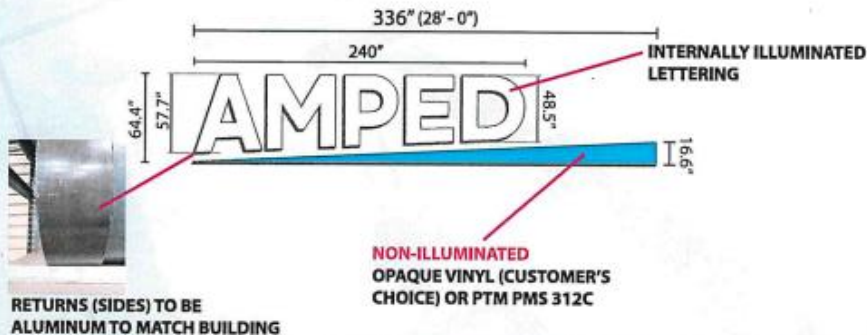




2500 South 170th  
New Berlin, Wisconsin  
Proudly Made in the USA!

Web: [www.bauersignusa.com](http://www.bauersignusa.com)  
Phone: 262-784-0500  
Fax: 262-784-6675

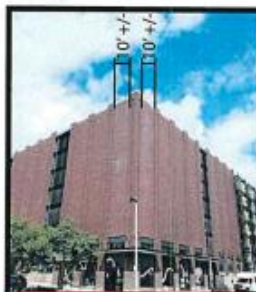
File	Amped
Location	902 W Juneau Ave, MKE
Client	Marla
Sales rep	Paul Butler
Date	cb 08/08/22
Revision	cb 08/17/22, cb 09/14/22, cb 09/15/22, cb 09/21/22, cb 09/26/22, cb 09/28/22



### SPECIFICATIONS

FABRICATE AND INSTALL TWO SETS OF INTERNALLY ILLUMINATED, DIRECT MOUNT CHANNEL LETTERS, WITH NON-ILLUMINATED BLUE UNDERSCORE.

- **FACES** TO BE #7328 WHITE ACRYLIC
- **UNDERSCORE** FACE TO BE DECORATED WITH CUSTOMER'S CHOICE OPAQUE VINYL OVERLAYS OR PTM PMS 312C DEPENDING ON FABRICATION
- **RETURNS (SIDES)** TO BE .040X3" ALUMINUM AS SHOWN TO MATCH BUILDING AND BACKS TO BE .040 ALUMINUM
- **TRIMCAPS** TO BE 1" PAINTED TO MATCH BUILDING (SAME AS RETURNS)
- **EXTERIORS** PAINTED TO MATCH BUILDING
- **INTERIORS** PAINTED WHITE
- **ILLUMINATED** WITH WHITE LEDs
- **POWERED** WITH APPROPRIATE LOAD POWER SUPPLIES



**SURVEY REQUIRED PRIOR TO FABRICATION**



NIGHT VIEW



IMAGE FOR ILLUSTRATIVE PURPOSES ONLY, SIZING SUBJECT TO FIELD VERIFICATION

Printed artwork colors are not always representative of final product colors. Please refer to specifications for call out or salesman for samples.

These drawings are the exclusive property of Bauer Sign Company. Not to be duplicated in any way without expressed written permission!

FINAL ELECTRICAL CONNECTION IS CLIENT'S RESPONSIBILITY

our products are certified by Underwriters Laboratories, Inc.

This sign shall be manufactured in accordance with the American National Standard for the manufacture of signs. This includes proper mounting and handling of the sign. Sign shall conform to UL 1996.

Scale: 1/8" = 1'