



LIVING WITH HISTORY

# Certificate of Appropriateness

Milwaukee Historic Preservation Commission/200 E. Wells Street/Milwaukee, WI 53202/phone 414-286-5712/fax 414-286-3004

**Property Description of work**

**918 N Vel R Phillips Avenue**

Install frosted window panes instead of previously approved clear glass on the lower level (alley-side) windows of the north and east elevations as indicated in the attached drawings.

**Date issued**

6/20/2022

PTS ID N/A

In accordance with the provisions of Section 320-21 (11) and (12) of the Milwaukee Code of Ordinances, the Milwaukee Historic Preservation Commission has issued a certificate of appropriateness for the work listed above. The work was found to be consistent with preservation guidelines. The following conditions apply to this certificate of appropriateness: N/A

All work must be done in a craftsman-like manner, and must be completed within one year of the date this certificate was issued. Staff must approve any changes or additions to this certificate before work begins. Work that is not completed in accordance with this certificate may be subject to correction orders or citations. If you require technical assistance, please contact Historic Preservation staff as follows: Phone: (414) 286-5712 E-mail: [hpc@milwaukee.gov](mailto:hpc@milwaukee.gov).

If permits are required, you are responsible for obtaining them from the Milwaukee Development Center. If you have questions about permit requirements, please consult the Development Center's web site, [www.milwaukee.gov/permits](http://www.milwaukee.gov/permits), or call (414) 286-8210.

City of Milwaukee Historic Preservation  
Copies to: Development Center, Ald. R. Bauman



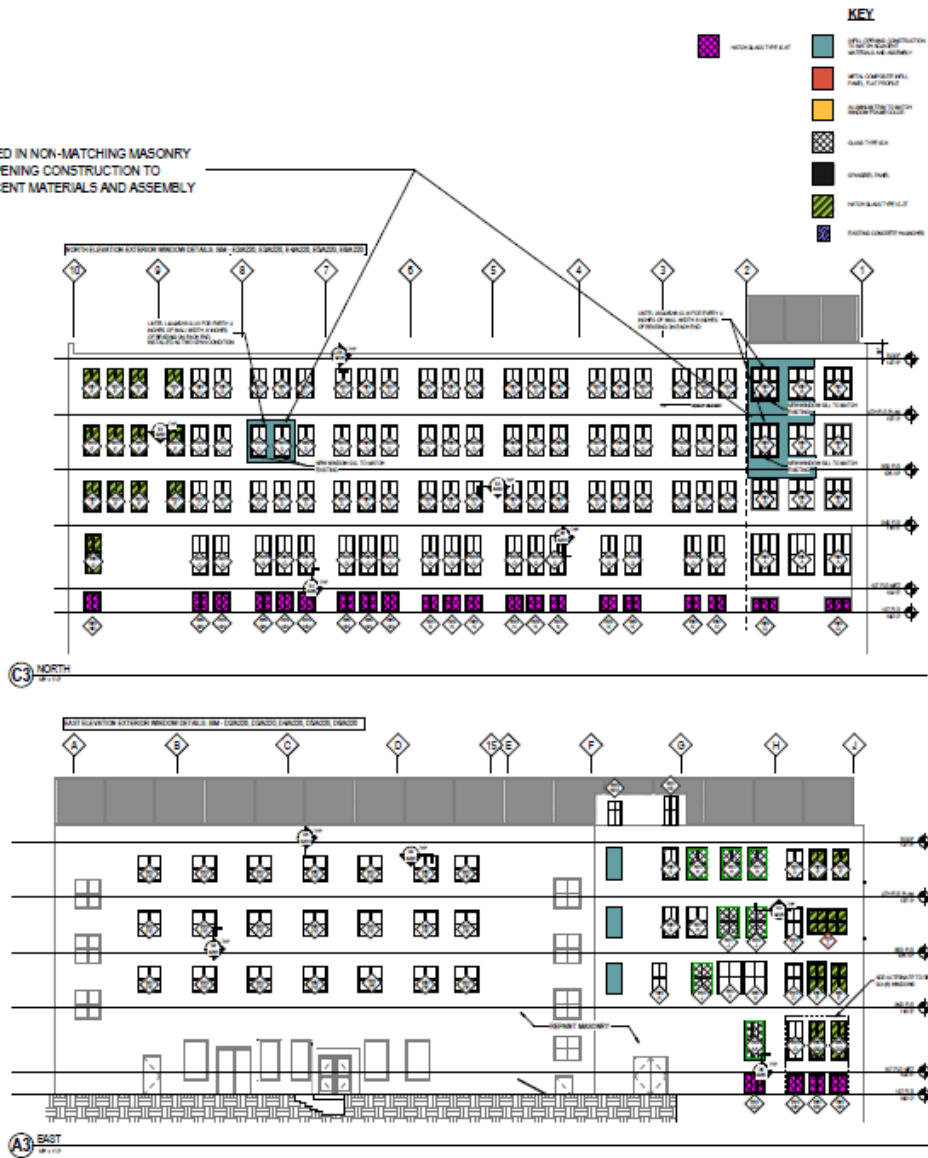
**BRICK REPLACEMENT**

REPAINT EXISTING BRICK ALONG NORTH, EAST, AND SOUTH ELEVATIONS  
 COLOR SELECTED:  
 SHERWIN WILLIAMS SW 7038, TONY TAUPE



**NORTH-EAST SKYBRIDGE INFILL**

REMOVE FILLED IN NON-MATCHING MASONRY AND INFILL OPENING CONSTRUCTION TO MATCH ADJACENT MATERIALS AND ASSEMBLY



PROJECT INFORMATION  
**SEEDS OF HEALTH - HIGH SCHOOL EXTERIOR BUILDING IMPROVEMENTS**

918 VEL R. PHILLIPS AVE  
 MILWAUKEE, WI 53203

ISSUANCE AND REVISIONS

NO.	DESCRIPTION

CITY PLAN

SHEET INFORMATION

PROJECT MANAGER: MG  
 PROJECT NUMBER: 20200102

EXTERIOR ELEVATIONS

A 204

Frosted glass to be installed in lower-level window openings colored purple in key.