

W. K. RESERVOIR AVENUE

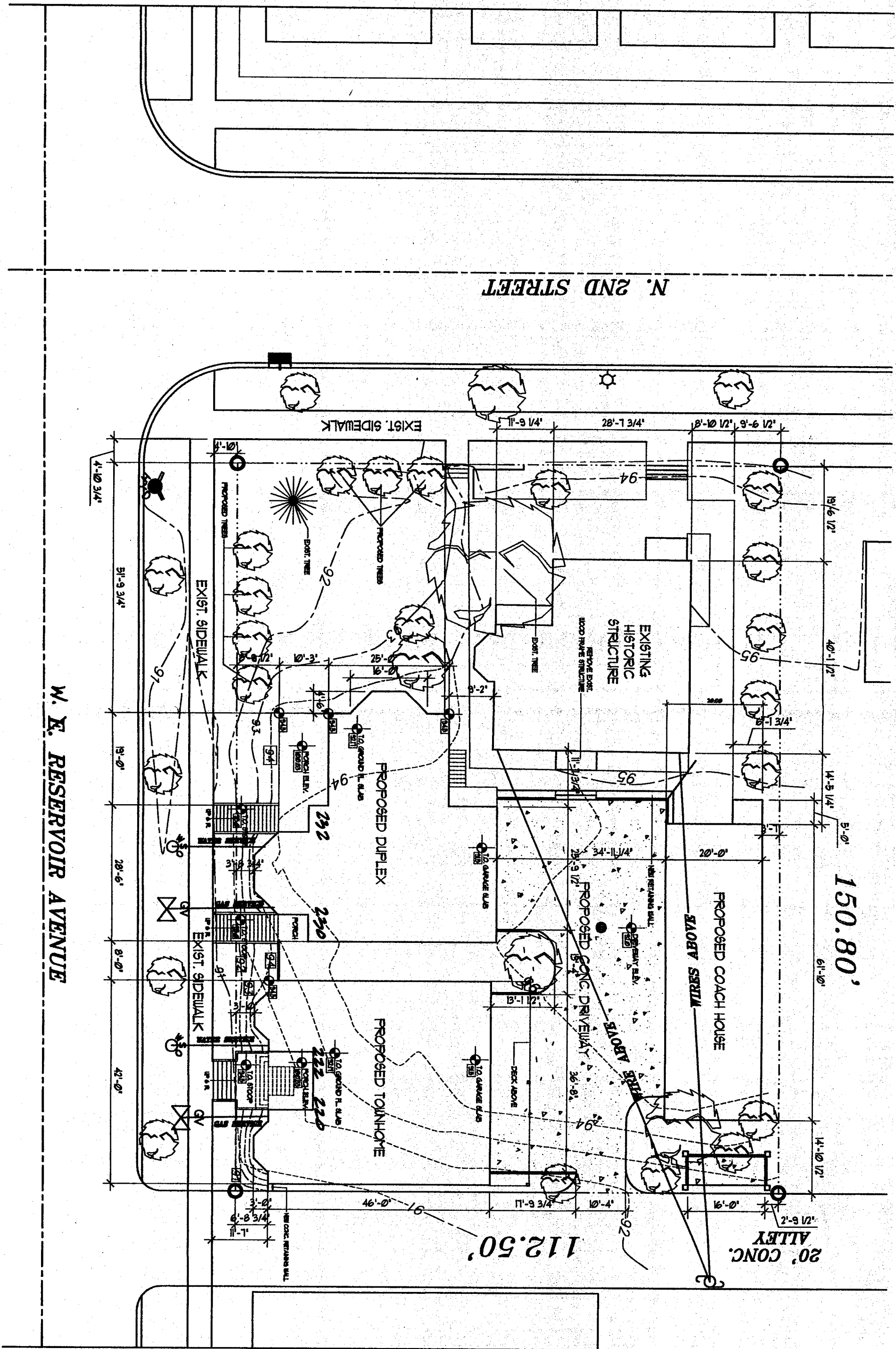
RESERVOIR COURT CONDOMINIUMS - SITE PLAN DETAIL

1"=10'-0"



4/7/03

LYNN BICHLER ARCHITECTS



N. 2ND STREET

W. E. RESERVOIR AVENUE

150.80'

112.50'

20' CONC. ALLEY

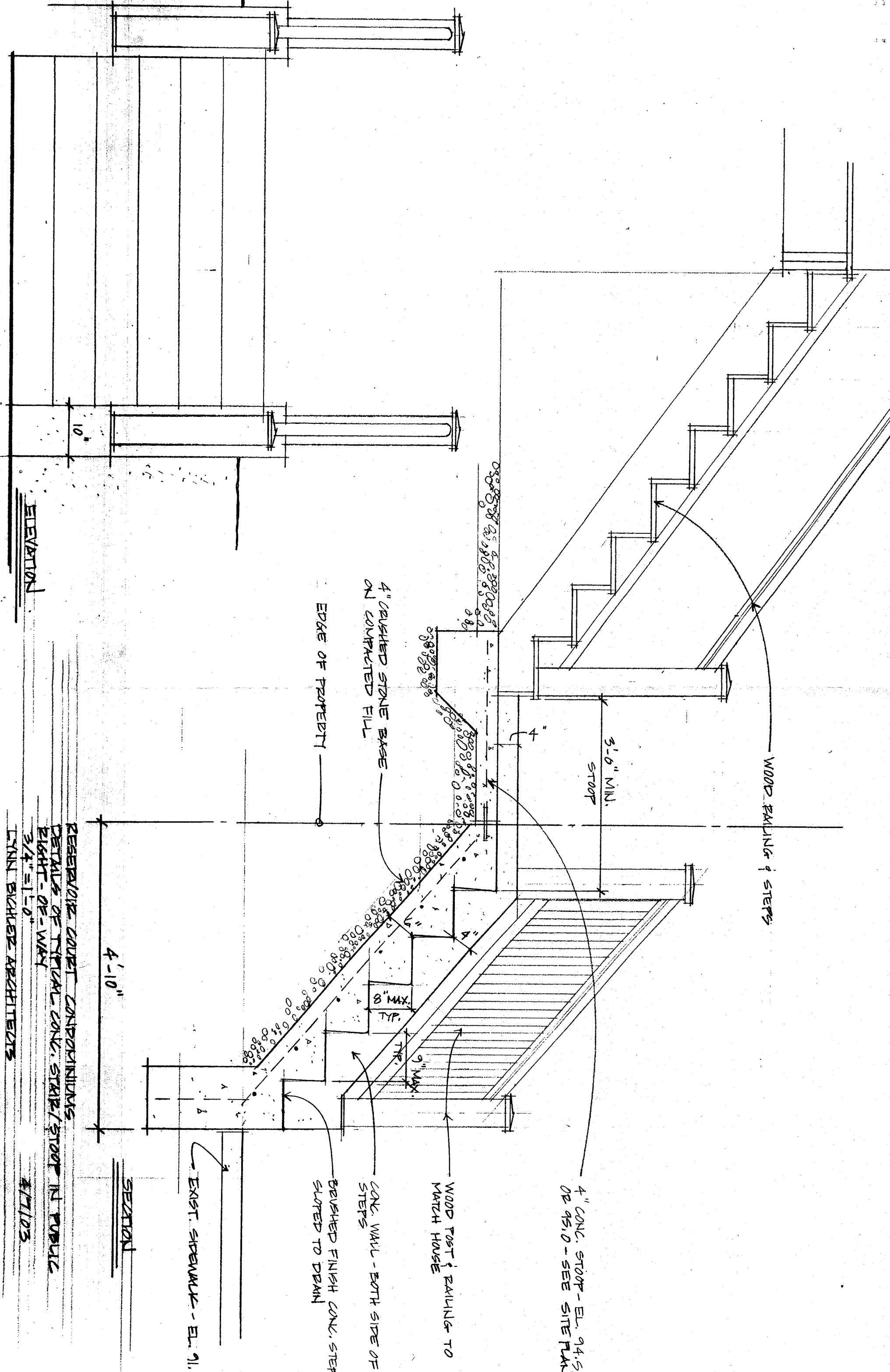
RESERVOIR COURT CONDOMINIUMS - SITE PLAN

1"=20'-0"

LYNN BICHLER ARCHITECTS

4/7/03





WOOD RAILING & STEPS

3'-6" MIN. STOOP

4" CONC. STOOP - EL. 94.5 OR 95.0 - SEE SITE PLAN

WOOD POST & RAILING TO MATCH HOUSE

CONC. WALL - BOTH SIDE OF STEPS
BRUSHED FINISH CONC. STEPS SLOPED TO DRAIN

EXIST. SIDEWALK - EL. 91.0

SECTION

4" CRUSHED STONE BASE ON COMPACTED FILL
EDGE OF PROPERTY

4'-10"

ELEVATION

RESERVED CURB COMPONENTS
DETAILS OF TYPICAL CONC. STAIR/STOOP IN PUBLIC RIGHT-OF-WAY
3/4" = 1'-0"
TJN BICKLER ARCHITECTS

4/7/03