

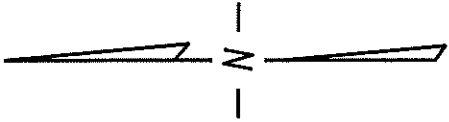
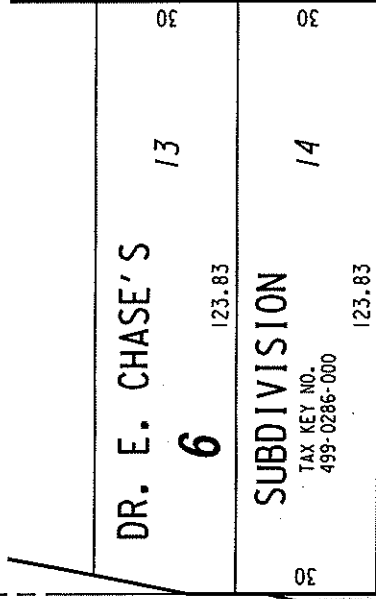
N.E. 1/4 SEC. 8, T.6N., R.22E.

498

499 N.W. 1/4 SEC. 9, T.6N., R.22E.

SEC. LINE

St.



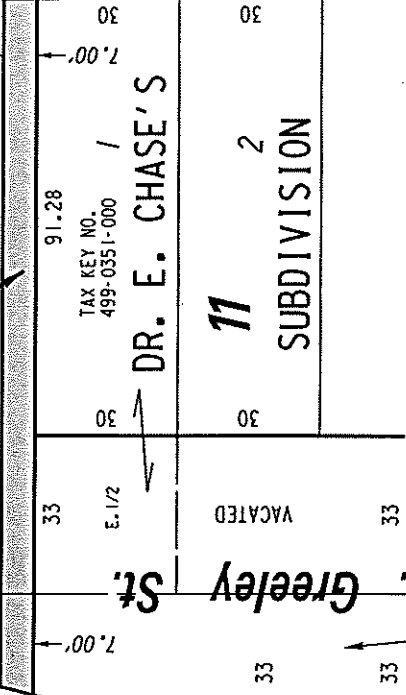
(40' R.O.W.)

500 LINE RAILROAD COMPANY

E. Clifford St.

(A)

(B)

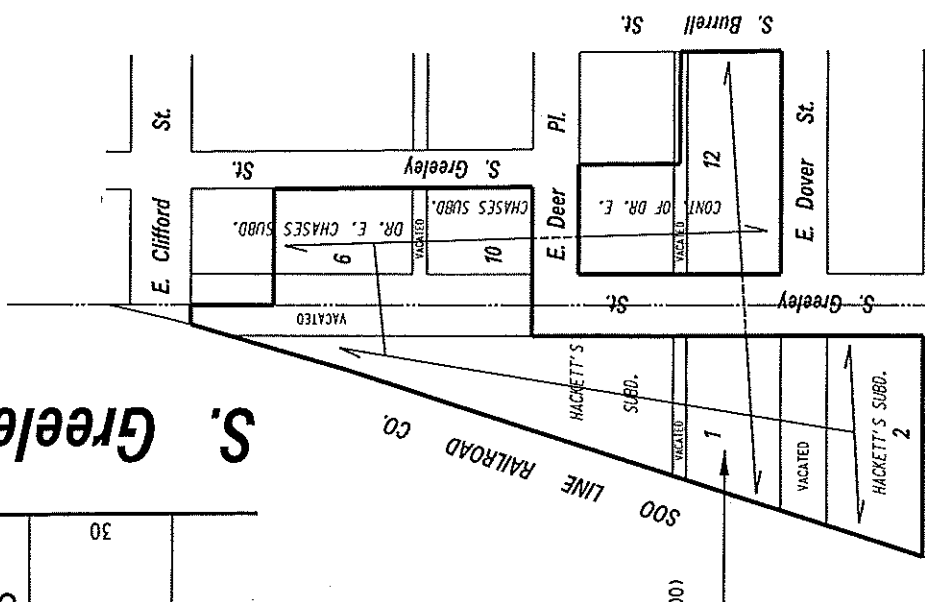


HACKETT'S SUBD.

BLK. 1

(HIDE HOUSE CONDO)
TAX KEY NO.
498-0751-000
498-0752-000
498-1753-000
498-0754-000
498-1755-000

S. Greeley



(HIDE HOUSE CONDO)
TAX KEY NO.
498-0751-000
498-0752-000
498-1753-000
498-0754-000
498-1755-000

PORTIONS OF PUBLIC STREET PROPOSED TO BE VACATED



EXHIBIT "A"
FILE NO. 130706
INFRASTRUCTURE SERVICES DIVISION

MILWAUKEE, WISCONSIN

ASSIGNED TO: W.E. FUCHS

CH'K'D. BY: W.E. FUCHS

DRAWN BY: W.E.F.

DATE: NOV. 14, 2013

PROJECT/GRANT NO.: WK52337337

SCALE: 1" = 40'

APPROVED BY:

Marcia Connell
CITY ENGINEER

CENTRAL DRAFTING & RECORDS MANAGER