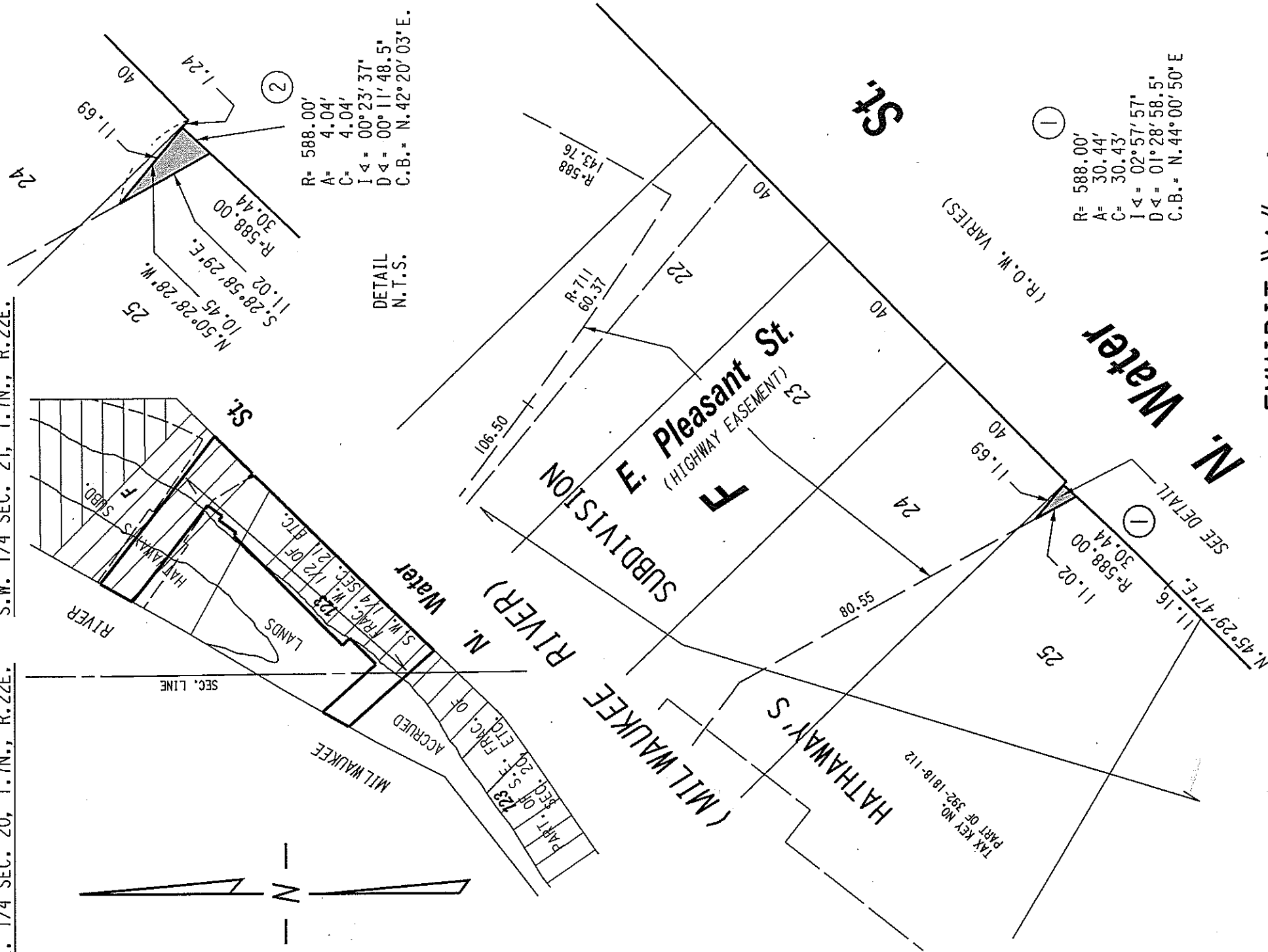


360

S.W. 1/4 SEC. 21, T.7N., R.22E.

S.E. 1/4 SEC. 20, T.7N., R.22E.

S.W. 1/4 SEC. 21, T.7N., R.22E.



DETAIL N.T.S.

R= 588.00'  
 A= 4.04'  
 C= 4.04'  
 IΔ= 00°23'37"  
 DΔ= 00°11'48.5"  
 C.B.= N.42°20'03"E.

R= 588.00'  
 A= 30.44'  
 C= 30.43'  
 IΔ= 02°57'57"  
 DΔ= 01°28'58.5"  
 C.B.= N.44°00'50"E

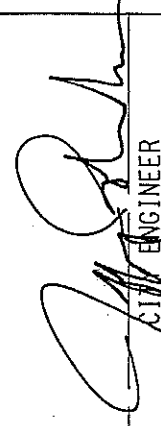

 PORTION OF PUBLIC STREET PROPOSED TO BE VACATED

EXHIBIT "A"  
 FILE NO. 071562  
 INFRASTRUCTURE SERVICES DIVISION  
 MILWAUKEE, WISCONSIN

ASSIGNED TO: W.E. FUCHS  
 DRAWN BY: W.E.F.  
 PROJECT/GRANT NO.: WK52337261  
 APPROVED BY:

CH'K'D. BY: W.E. FUCHS  
 DATE: APRIL 8, 2008  
 SCALE: 1" = 30'

*Marcia Lindroth*  
 CENTRAL DRAFTING & RECORDS MANAGER

  
 ENGINEER