

# Potawatomi Bingo Casino Expansion

Forest County Potawatomi Community of Wisconsin

1721 West Canal Street  
Milwaukee, Wisconsin 53233

## Casino Building & Parking Garages

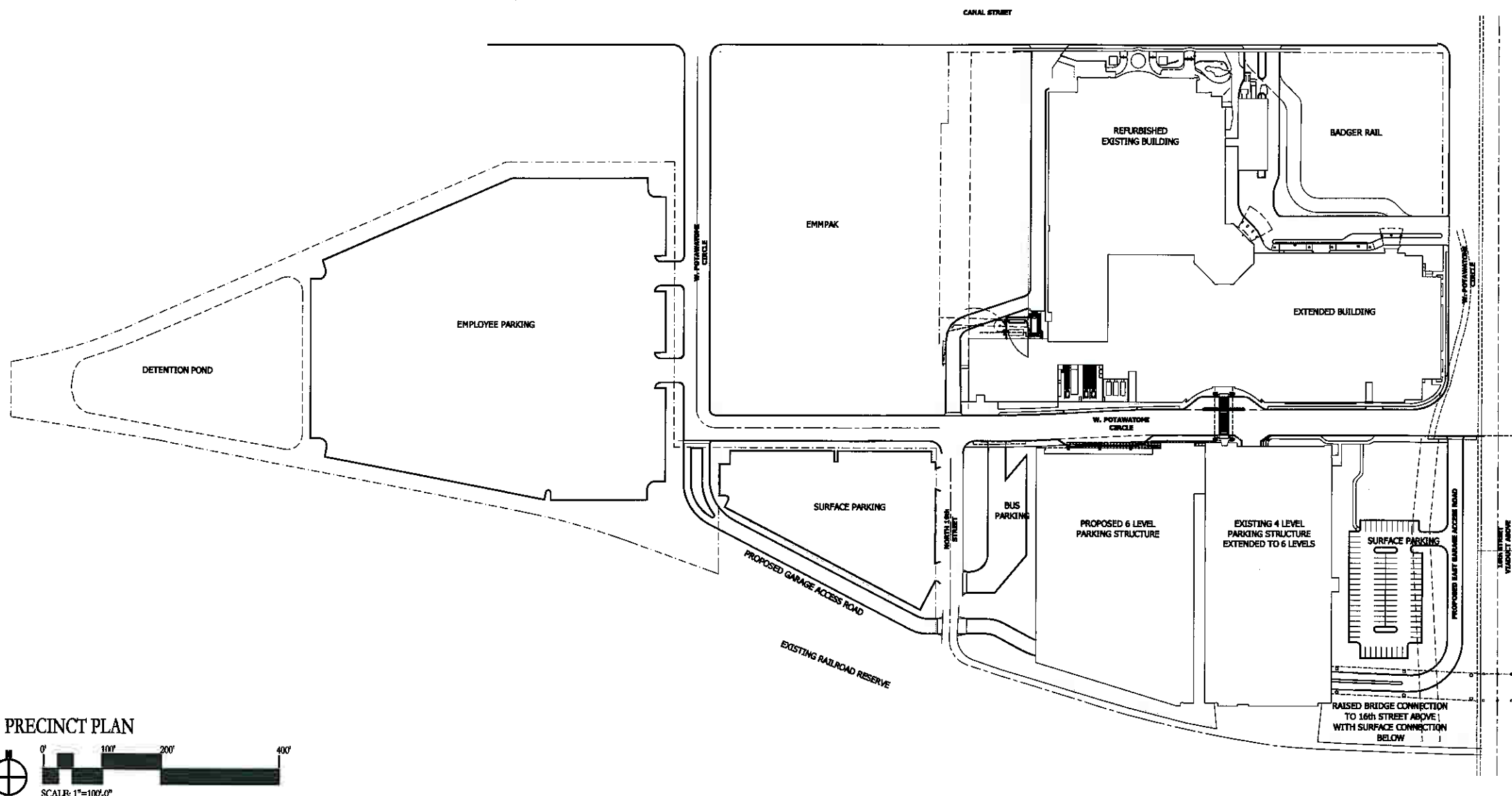


3D Perspective - View from NE



Vicinity Map

Revised 04.12.07 DPD-0



**SHEET INDEX**

- \* DPD-0 Cover Sheet / Vicinity Map
- \* DPD-1 Project Team / Sheet Index
- DPD-2 ALTA/ACSM Land Title Survey - Existing
- DPD-3 Proposed Project Boundary Description
- DPD-4 Existing Facilities Site Plan
- \* DPD-5 Proposed Building and Parking Site Plan
- \* DPD-6 Proposed Utility Plan
- \* DPD-7 Proposed Grading Plan
- \* DPD-8 Proposed Landscape Plan
- DPD-9 Proposed Landscape Details
- DPD-10A Existing Building Elevations
- DPD-10B Proposed Building Elevations
- DPD-10C 3D Perspective of Proposed 16th Street Bridge - View from SE
- DPD-10D 3D Perspective View from SE
- DPD-10E 3D Perspective View from NE
- DPD-11A Proposed Signage and Details
- DPD-11B Proposed Signage and Details
- DPD-11C Proposed Signage and Details
- DPD-11D Proposed Signage and Details

\* Drawing Revised 04.12.07

**PROJECT TEAM**

- Architecture and Interiors :  
**Hnedak Bobo Group**  
 104 South Front Street  
 Memphis, TN 38103-2906  
 Ph: 901-525-2253/Fax: 901-529-0689  
 Web: www.hbgroup.com
- Architect in Association :  
**Engberg Anderson Design Partnership, Inc.**  
 611 North Broadway / Suite 517  
 Milwaukee WI 53202  
 Ph: 414-944-9000/Fax: 414-944-9100  
 Web: www.engberganderson.com
- Civil Engineering :  
**Graef, Anhalt, Schloemer & Associates, Inc.**  
 One Honey Creek Corporate Center/125 South 84th Street/Suite 401  
 Milwaukee, WI 53214-1470  
 Ph: 414-258-1500/Fax: 414-258-0037  
 Web: www.graef.com
- Structural Engineering :  
**John A. Martin & Associates, Inc.**  
 1212 Flower Street/3rd Floor/Los Angeles, CA 90015  
 Ph: 213-742-1500/Fax: 213-742-8881  
 Web: www.johnmartin.com
- Medical, Plumbing & Fire Protection Engineering :  
**Finnegan Erickson & Associates**  
 2821 West Horizon Ridge Parkway/Suite 200/Wenderson, KY 40052  
 Ph: 702-258-8000/Fax: 702-258-8061  
 Web: www.fec-world.com
- Geological Engineering :  
**RHR Consulting Engineers, Inc.**  
 3711 Flamingo Drive/Las Vegas, NV 89102  
 Ph: 702-873-8440/Fax: 702-873-9487  
 Web: www.rhrc.com
- Lighting Design :  
**Creative Lighting Design & Engineering**  
 North 140 West 13843 Cedar Lane/Germantown, WI 53022  
 Ph: 262-242-4432/Fax: 262-242-1020  
 Web: www.cde.com
- Security & Telecommunications :  
**Con-Tech Consultants**  
 6500 Dublin Boulevard/Suite 205/Dublin, CA 94568  
 Ph: 925-829-3075/Fax: 925-829-2395  
 Web: www.con-tech.com
- Food Service & Uniform Issue :  
**FSA Design**  
 300 Corporate Pointe/Suite 470/Calver City, CA 92030  
 Ph: 310-845-8745/Fax: 310-845-8748  
 Web: www.foodservice.com
- Signage & Graphics :  
**Lorenc+Yoo Design**  
 109 Vickery Street/Roswell, GA 30075-4926  
 Ph: 770-645-2828/Fax: 770-968-2452  
 Web: www.lorencyoodesign.com
- Parking :  
**Walker Parking Consultants**  
 125 TownPark Drive/Suite 375/Wennoke, CA 30144  
 Ph: 770-218-1144/Fax: 770-218-0538  
 Web: www.walkerparking.com
- Construction Manager :  
**Gilbane**  
 101 West Pleasant Street / Suite 104  
 Milwaukee WI 53212  
 Ph: 414-223-8901/Fax: 414-223-8913  
 Web: www.gilbane.com/legislative/milwaukee.asp

in association with:

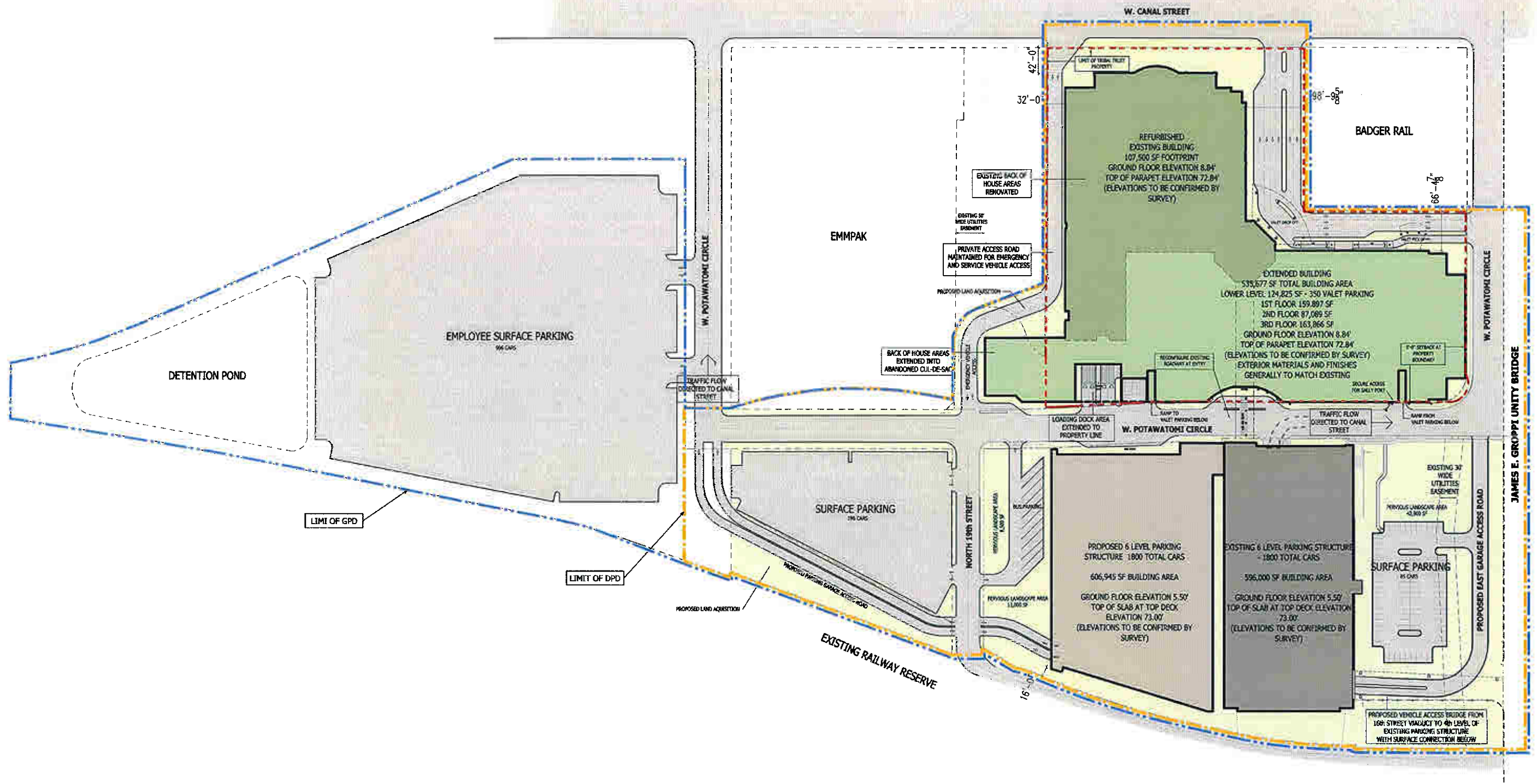
**Hnedak Bobo Group**  
Memphis • Las Vegas

EngbergAnderson Design Partnership, Inc.

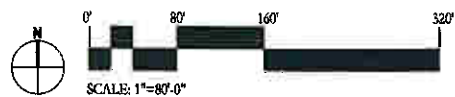
**DETAILED PLAN DEVELOPMENT**  
**FOREST COUNTY POTAWATOMI LEGACY DISTRICT**

**POTAWATOMI BINGO CASINO EXPANSION**  
**MILWAUKEE, WISCONSIN**



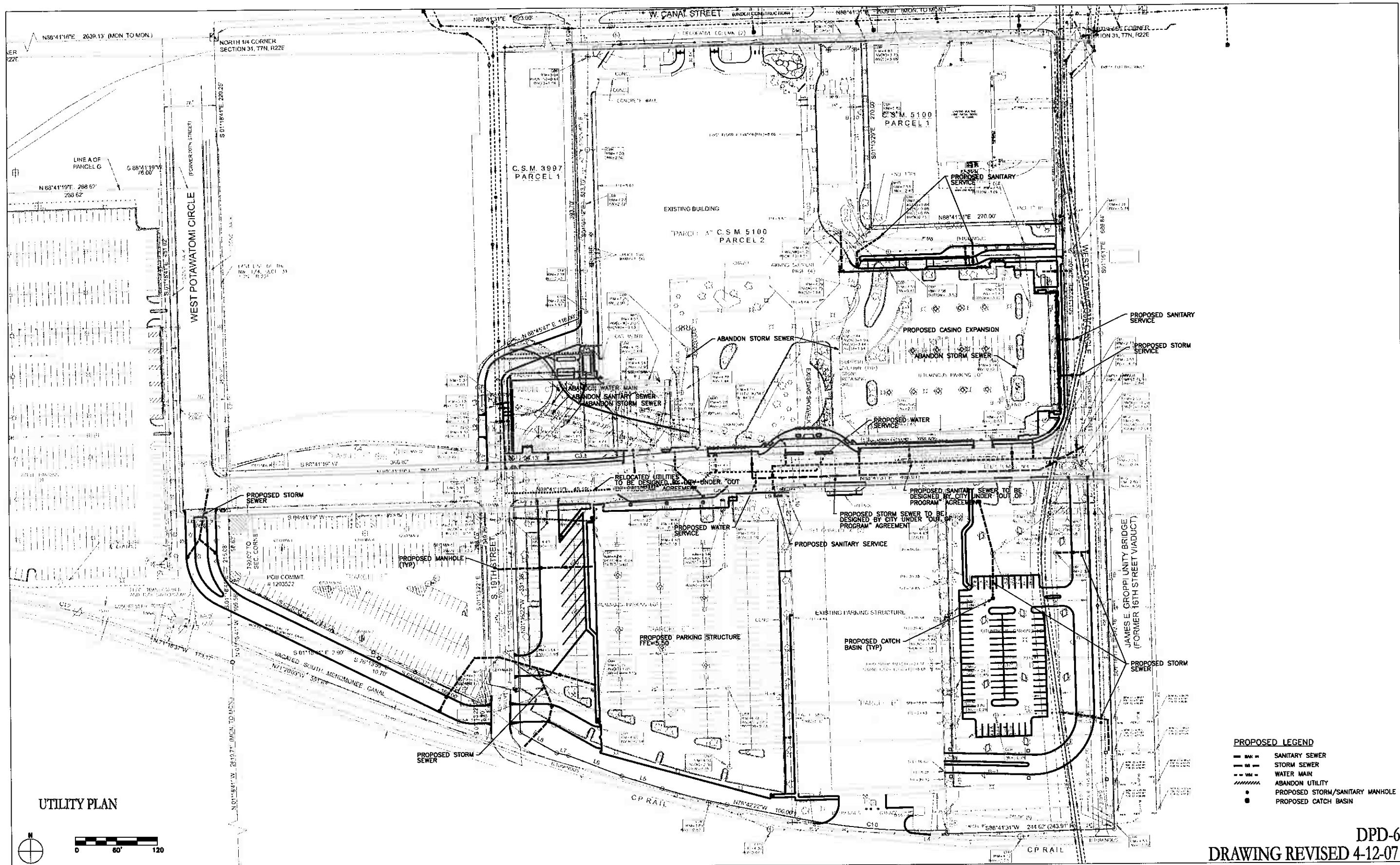


PROPOSED BUILDING AND PARKING SITE PLAN

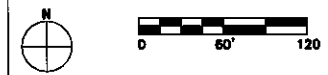


Revised 04.12.07 DPD-5





UTILITY PLAN



- PROPOSED LEGEND**
- SAN — SANITARY SEWER
  - SM — STORM SEWER
  - WM — WATER MAIN
  - ABANDON UTILITY
  - PROPOSED STORM/SANITARY MANHOLE
  - PROPOSED CATCH BASIN

DPD-6  
DRAWING REVISED 4-12-07

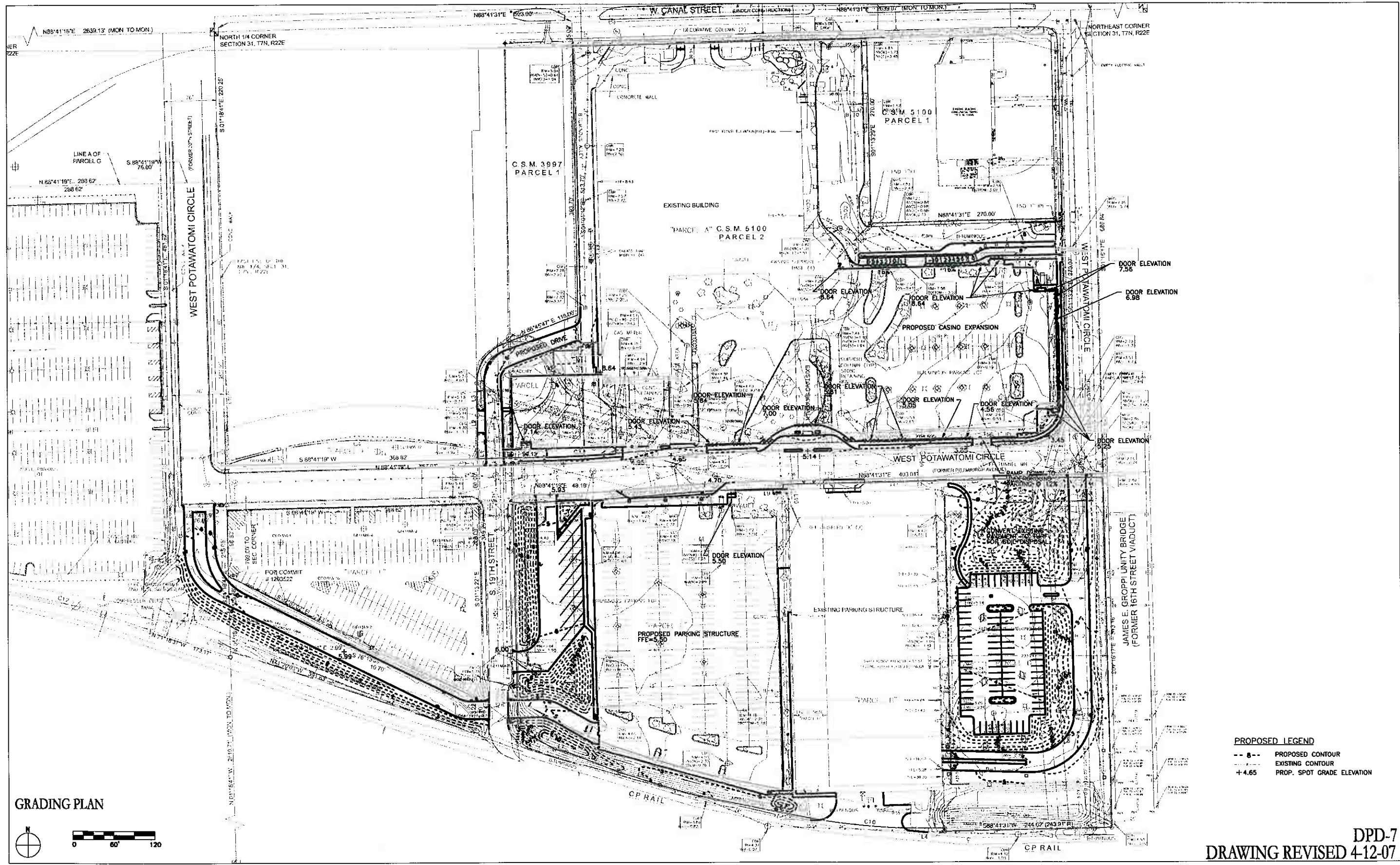


DETAILED PLAN DEVELOPMENT  
FOREST COUNTY POTAWATOMI LEGACY DISTRICT

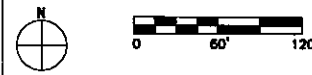


POTAWATOMI BINGO CASINO EXPANSION  
MILWAUKEE, WISCONSIN





GRADING PLAN



**PROPOSED LEGEND**  
 - - 8 - - PROPOSED CONTOUR  
 - - - - - EXISTING CONTOUR  
 +4.65 PROP. SPOT GRADE ELEVATION

DPD-7  
 DRAWING REVISED 4-12-07

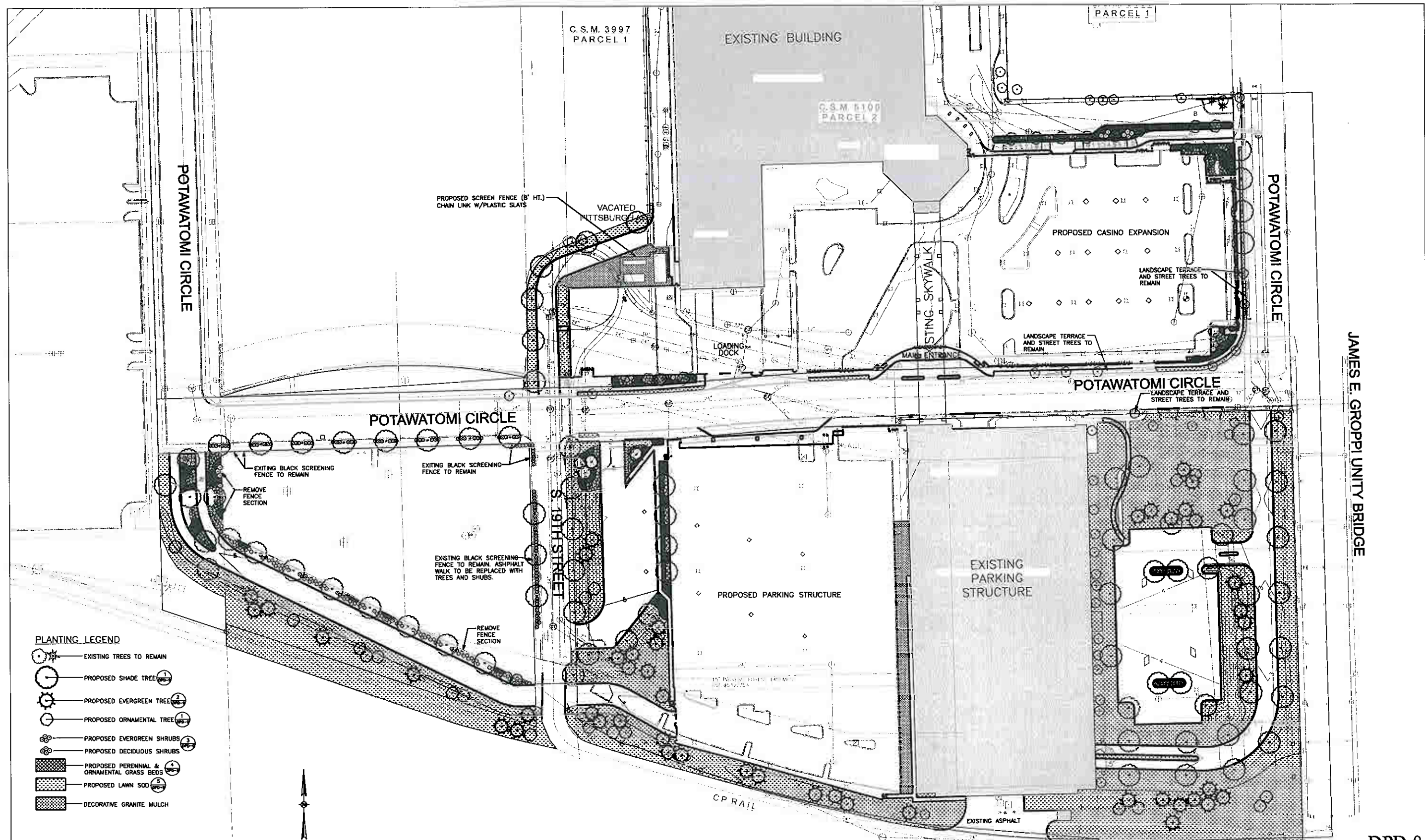


in association with:  
 DETAILED PLAN DEVELOPMENT  
 FOREST COUNTY POTAWATOMI LEGACY DISTRICT

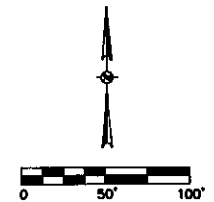


POTAWATOMI BINGO CASINO EXPANSION  
 MILWAUKEE, WISCONSIN





- PLANTING LEGEND**
- — EXISTING TREES TO REMAIN
  - — PROPOSED SHADE TREE
  - — PROPOSED EVERGREEN TREE
  - — PROPOSED ORNAMENTAL TREE
  - — PROPOSED EVERGREEN SHRUBS
  - — PROPOSED DECIDUOUS SHRUBS
  - — PROPOSED PERENNIAL & ORNAMENTAL GRASS BEDS
  - — PROPOSED LAWN SOO
  - — DECORATIVE GRANITE MULCH



CONCEPTUAL LANDSCAPE PLAN

DPD-8  
DRAWING REVISED 04-12-07



in association with:  
EngbergAnderson Design Partnership, Inc.

DETAILED PLAN DEVELOPMENT  
FOREST COUNTY POTAWATOMI LEGACY DISTRICT



POTAWATOMI BINGO CASINO EXPANSION  
MILWAUKEE, WISCONSIN