



OVERVIEW: 2010 Capital Budget

**Finance & Personnel Committee
October 19, 2009**

Capital Improvement Objectives

1. Support Strategic Goals

- Building safe & healthy neighborhoods;
- Increasing investment & economic vitality throughout Milwaukee;
- Improving workforce development & connecting more citizens to family supporting jobs;
- Sustaining, enhancing & promoting Milwaukee's natural environmental assets.

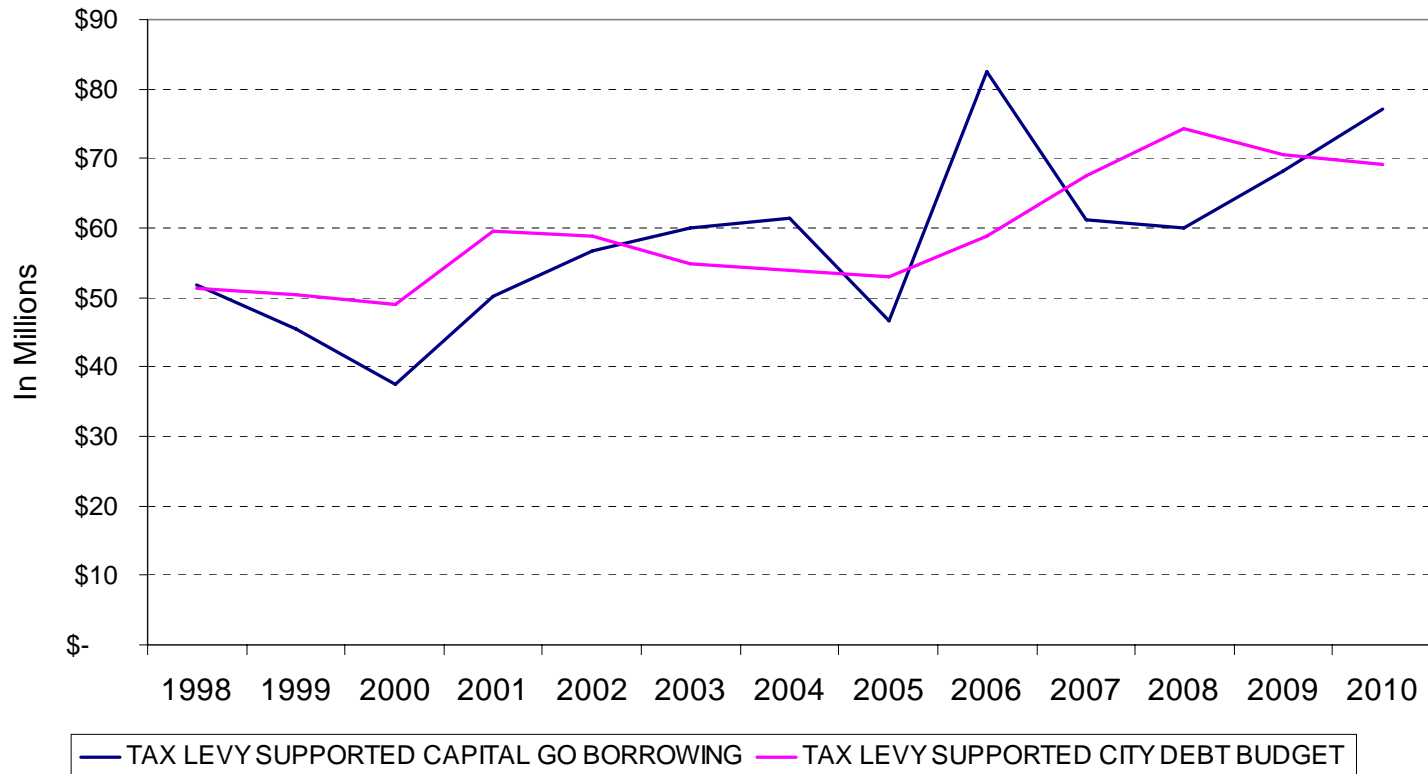
2. Preserve the City's assets

3. Achieve a stable debt levy

Capital Financing Goals

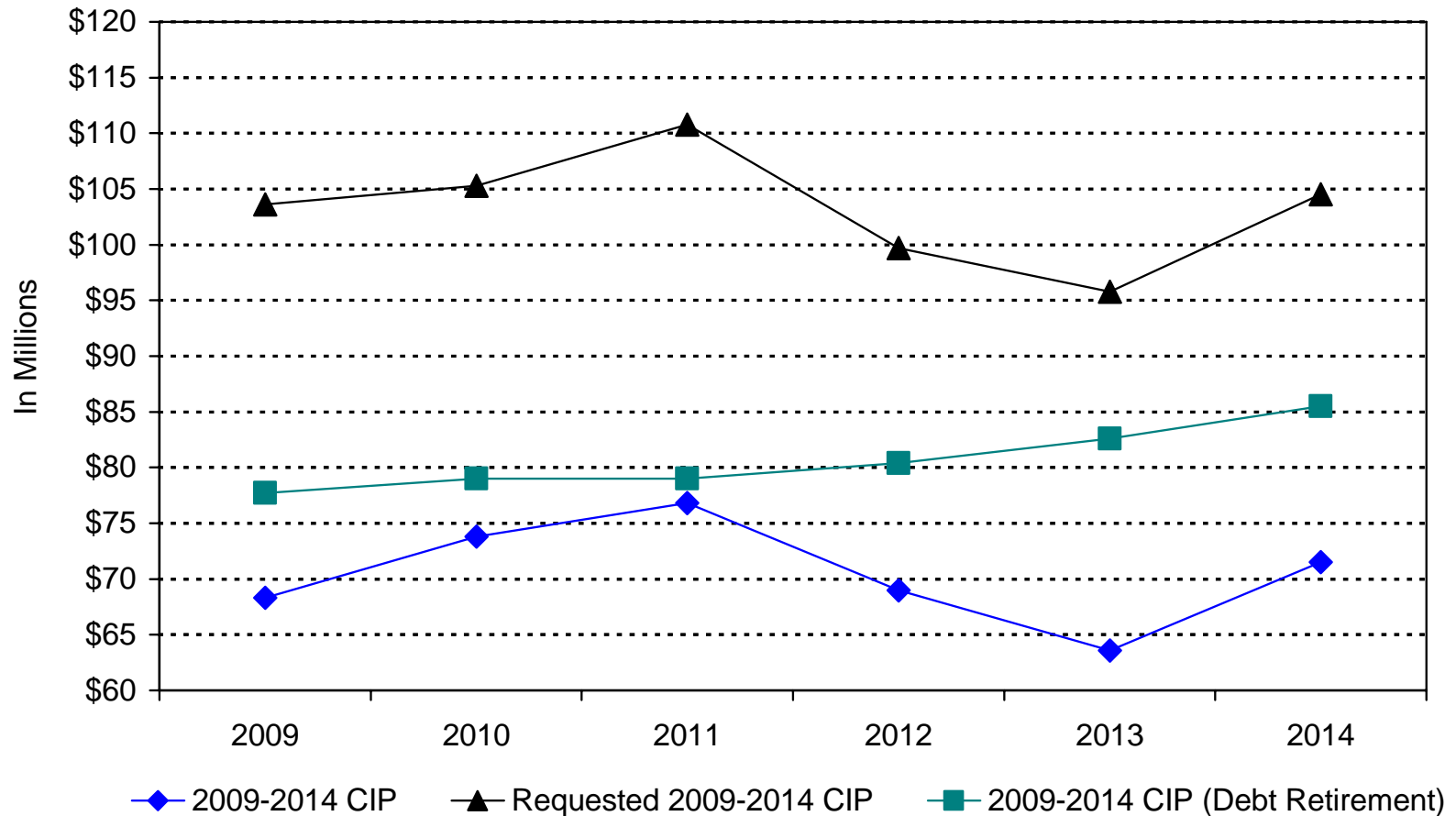
- The primary objective of the 2009-2014 Capital Improvements Plan is to protect and enhance the city's infrastructure and assets in a fiscally sustainable manner. To achieve this objective, the city has established three specific capital financing goals:
 - To fund adequately the city's infrastructure and general capital needs.
 - To control the city's overall debt burden.
 - To control tax levy supported capital spending so as to assist the city in maintaining core services while enhancing its competitive position.

1998-2010 Tax Levy Supported Capital Borrowing and Debt Budgets



NOTE: Borrowing amounts do not include MPS capital related borrowing which occurred through 2007. City Debt budget does include tax levy supported MPS related debt service for prior capital improvements and current cash flow borrowing.

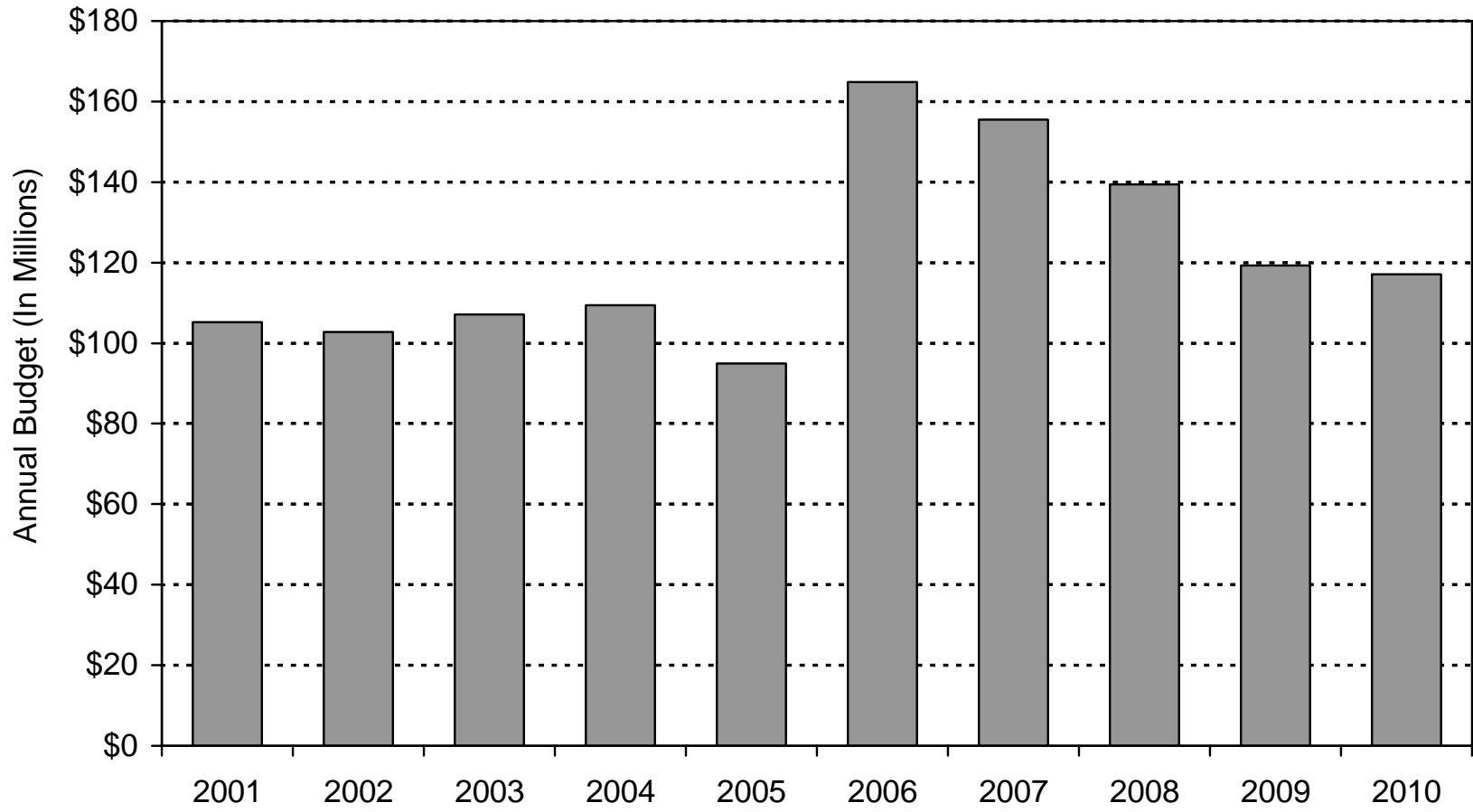
2009-2014 Tax Levy Debt Service Projections



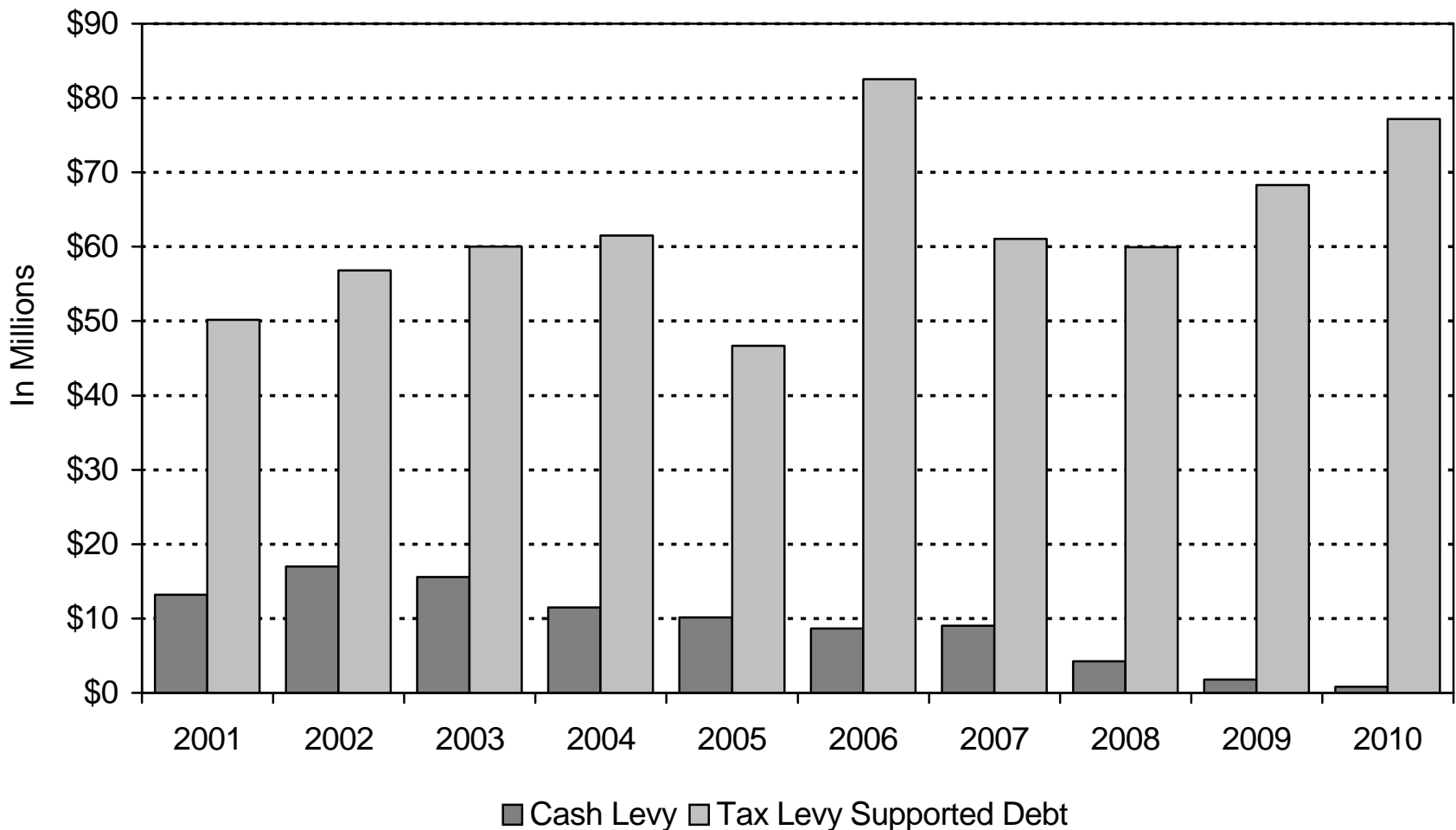
Capital Alternative Financing Strategies

- The City of Milwaukee will continue to seek alternatives to levy supported borrowing as a way to finance capital projects. Recent improvements to the City's position include the following:
 - DPW Tower Site is supported by lease payments from the Water and Sewer Enterprise Funds.
 - Motor Vehicle Registration Fee implemented to replace most assessments, support street replacement debt service & increase current funding, and maintenance activities.
 - Stormwater Management Fee utilized in 2010 to fund tree planting and production and the EAB program.
 - Port of Milwaukee projects funding through its operating special funds accounts.
 - MPS borrowing limited to programs that are supported by MPS reimbursements.
 - Examine feasibility of user charges as a cash financing tool for certain major equipment.

Capital Improvements Budget 2001 through 2010

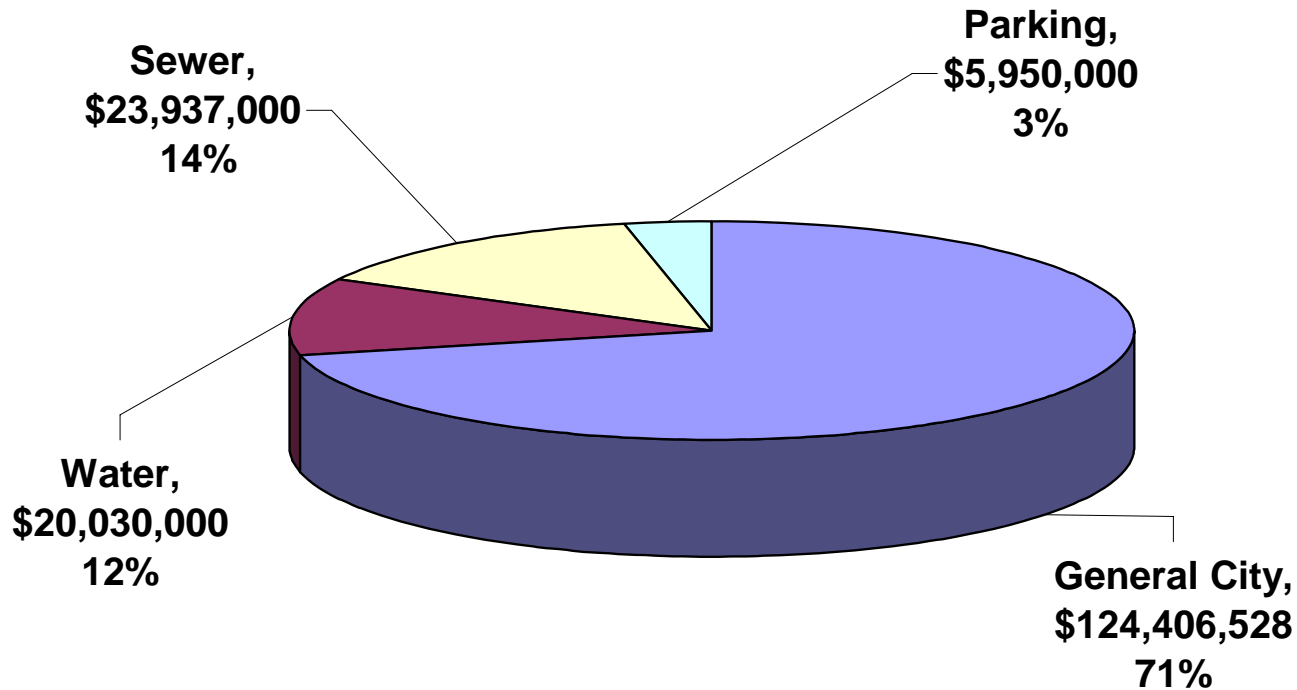


Tax Levy and Debt Financing for Capital Improvements: 2001 - 2010



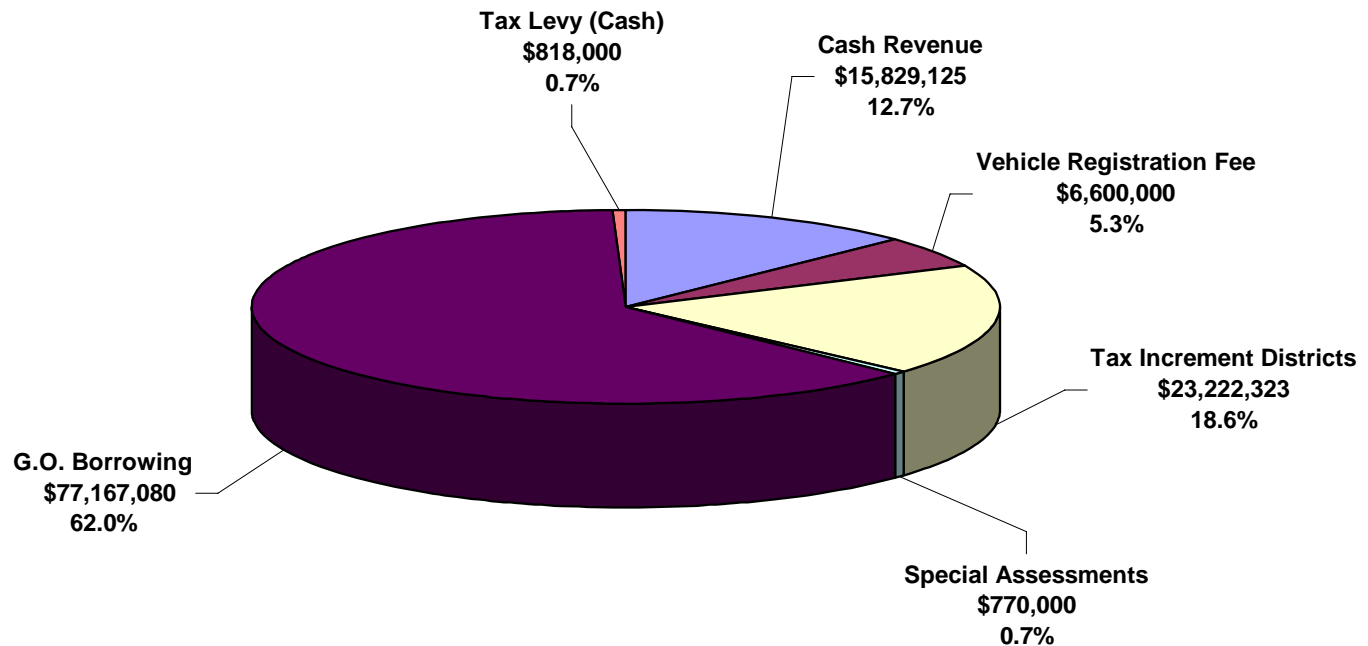
Budget Data

2010 Proposed Total City Capital Budget
Including Enterprise Funds
Total: \$174,323,528

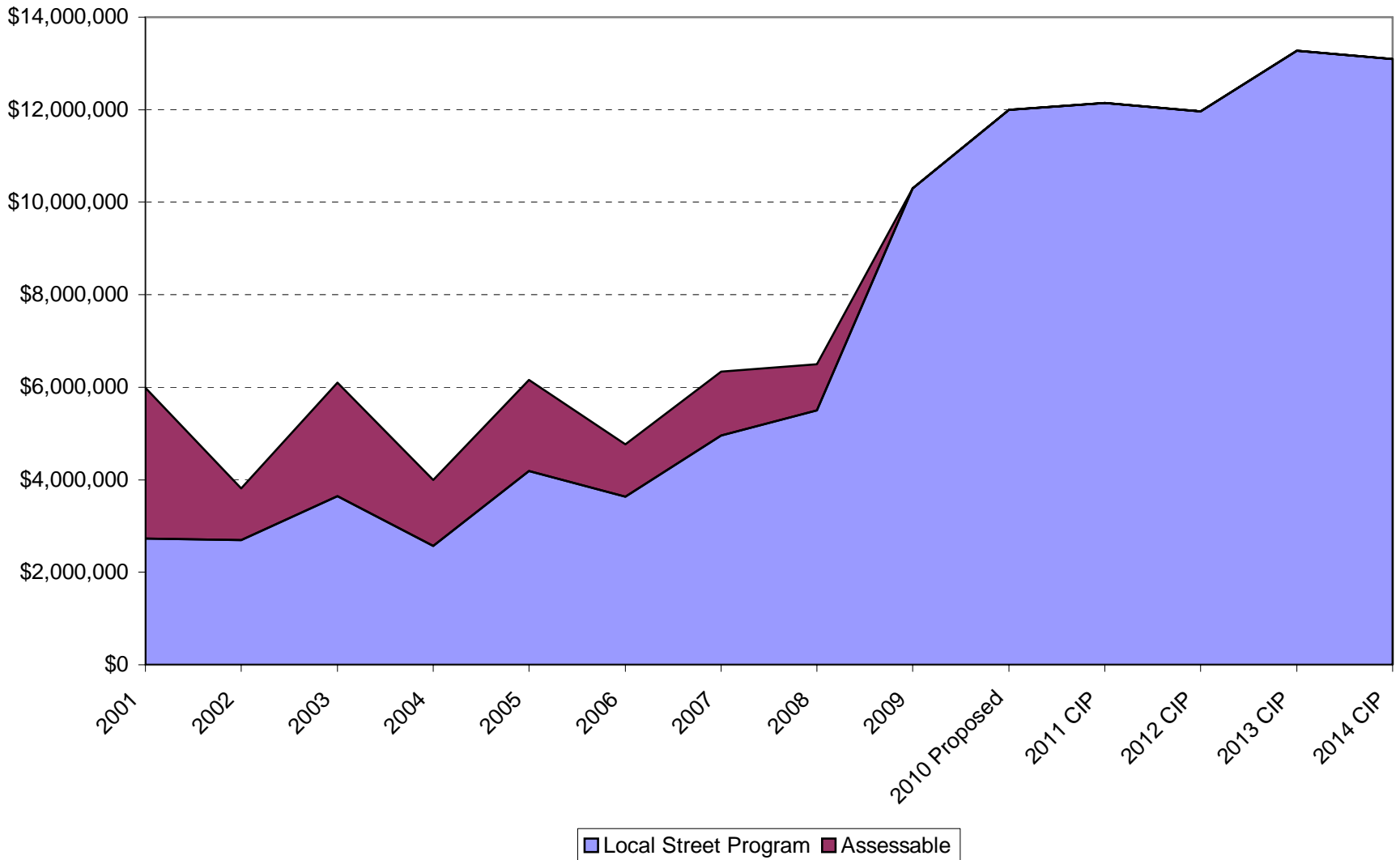


Budget Data

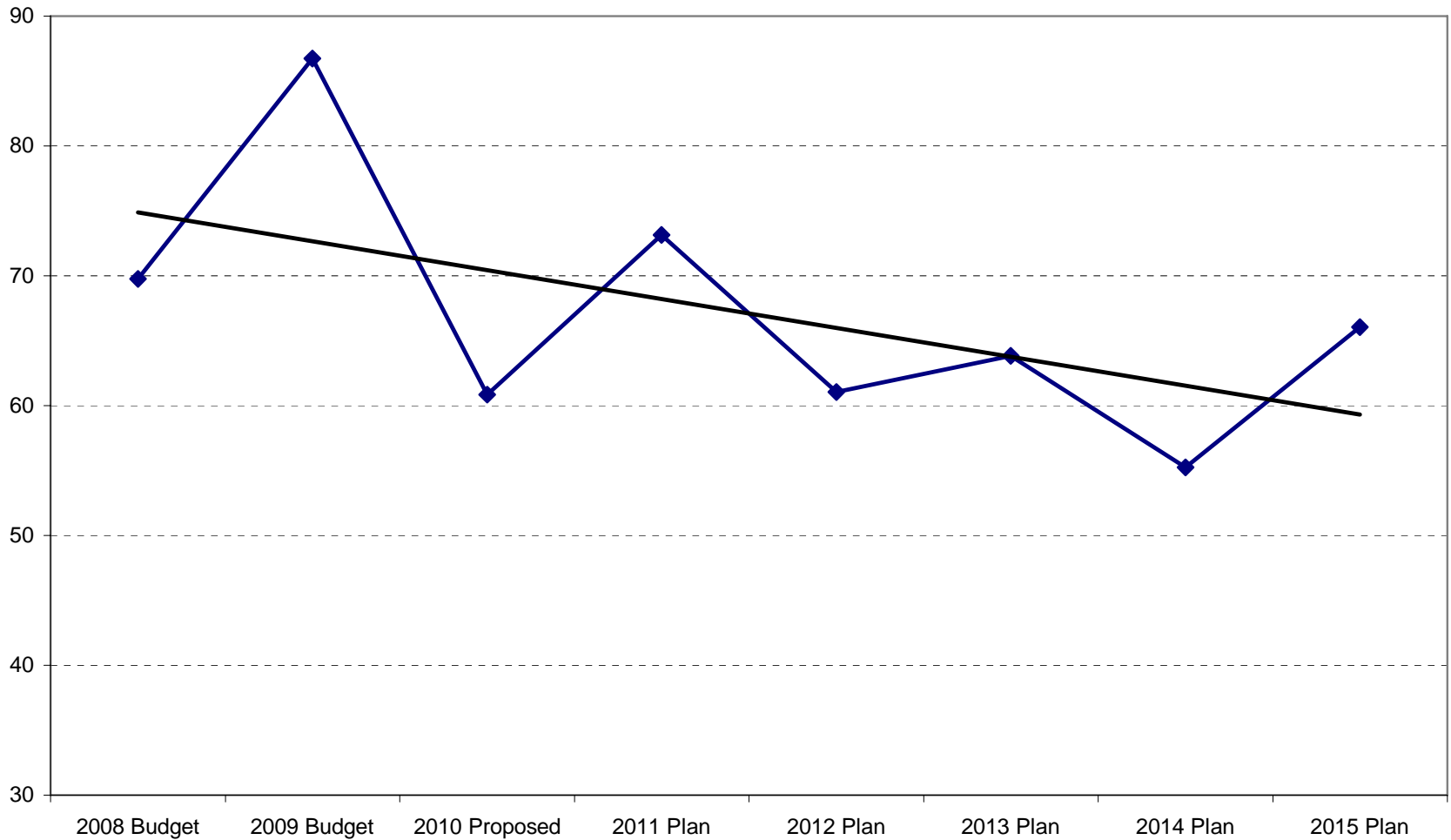
2010 Proposed General City Capital Budget
By Funding Source
Total: \$124,406,528



Local Street Capital Funding (nominal \$)



Local Street Replacement Cycle (Years) Including Trend



2010 LARGE SCALE PROJECTS FUNDING BY SOURCE

	CITY FUNDED CONSTRUCTION	CONSTRUCTION GRANT FUNDS	SEWER ENTERPRISE	WATER ENTERPRISE	STREET LIGHTING	CONDUIT/ MANHOLES	PROJECT TOTAL
MAJOR BRIDGE PROGRAM							
East Lincoln Viaduct over Union Pacific Railroad	\$1,150,000	\$4,600,000	\$0	\$0	\$22,000	\$0	\$5,772,000
South Howell Avenue over Union Pacific Railroad	\$276,000	\$1,104,000	\$0	\$0	\$10,000	\$0	\$1,390,000
West County Line Road over Little Menomonee River	\$500,000	\$500,000	\$0	\$0	\$10,000	\$10,000	\$1,020,000
South Whitnall Avenue over Union Pacific Railroad	\$290,000	\$1,160,000	\$0	\$0	\$10,000	\$0	\$1,460,000
LOCAL BRIDGE PROGRAM							
Juneau Ave Bascule Bridge over Milwaukee River	\$6,000,000	\$0	\$0	\$0	\$20,000	\$350,000	\$6,370,000
MAJOR STREETS/ARRA							
S First Street - E Lincoln Ave to S Kinnickinnic Ave	\$5,000	\$1,675,955	\$0	\$150,000	\$65,000	\$350,000	\$2,245,955
E Keefe Ave - N Humboldt to N Port Washington Rd*	\$105,000	\$2,195,058	\$4,954,000	\$0	\$80,000	\$20,000	\$7,354,058
MAJOR STREETS							
N 27th St - W St Paul Ave to W Highland Blvd	\$310,000	\$1,725,000	\$1,411,000	\$0	\$90,000	\$370,000	\$3,906,000
W Loomis Rd (STH36) - S 51st St to W Fardale Ave	\$75,000	\$9,500,000	\$0	\$0	\$15,000	\$0	\$9,590,000
Bayview to Downtown Bike Route	\$485,770	\$1,943,081	\$0	\$0	\$0	\$3,000,000	\$5,428,851
Milwaukee CBD Streetscape	\$550,000	\$2,880,000	\$0	\$0	\$170,000	\$0	\$3,600,000
SEWERS							
DOJ Mandated work on System #1205	\$0	\$0	\$2,424,000	\$0	\$0	\$0	\$2,424,000
2010 Manhole Rehabilitation	\$0	\$0	\$2,500,000	\$0	\$0	\$0	\$2,500,000

* Sewer work let in 2009 in order to complete prior to 2010 paving.