



Certificate of Appropriateness

Milwaukee Historic Preservation Commission/200 E. Wells Street/Milwaukee, WI 53202/phone 414-286-5712/fax 414-286-3004

Property	1711 S. 9th St.	Historic Mitchell Street HD
Description of work	Install a new HVAC system that requires new outdoor condensers at the west south side of the property.	
Date issued	5/28/2019	PTS ID 114765 COA: HVAC

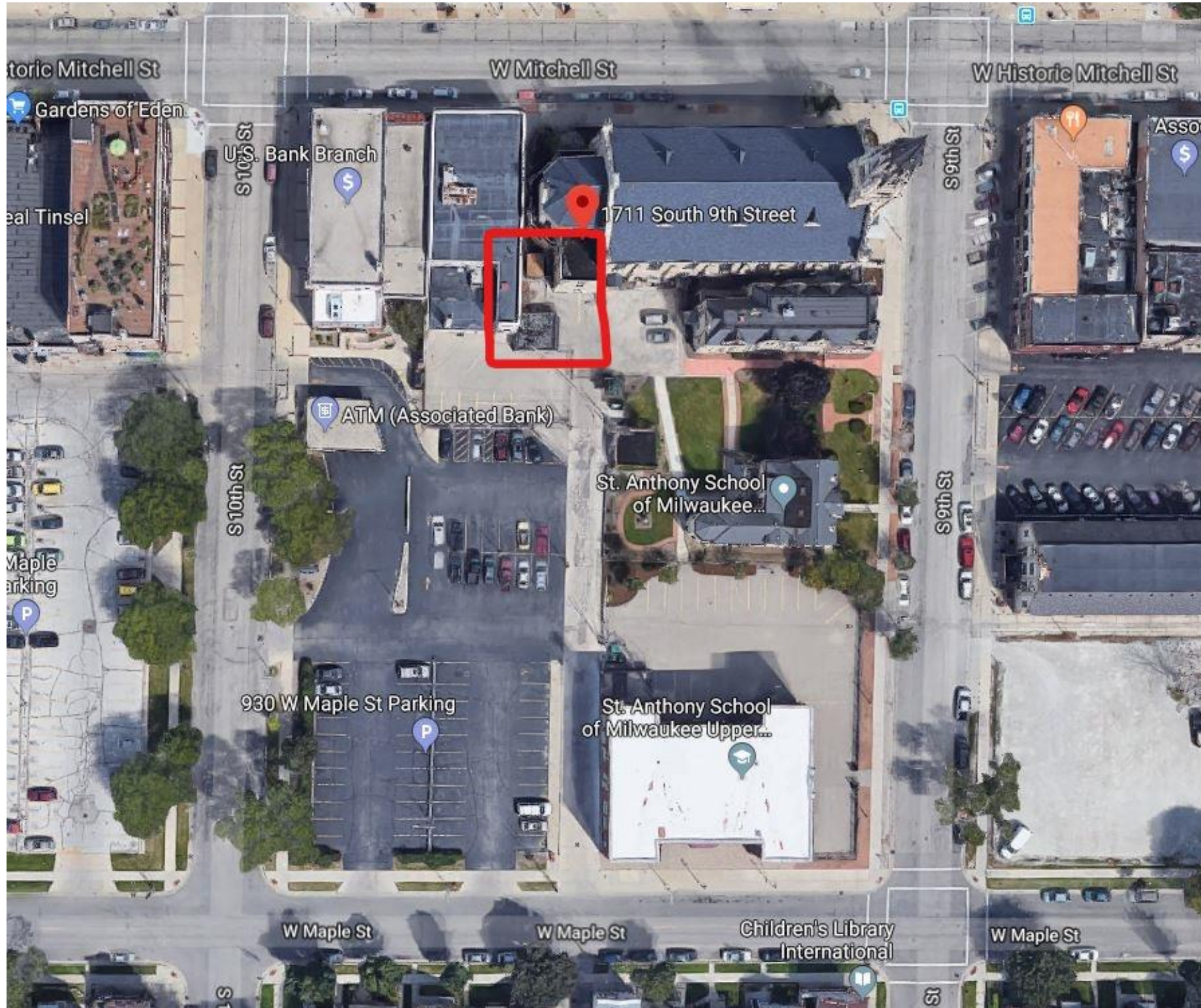
In accordance with the provisions of Section 320-21 (11) and (12) of the Milwaukee Code of Ordinances, the Milwaukee Historic Preservation Commission has issued a certificate of appropriateness for the work listed above. The work was found to be consistent with preservation guidelines. The following conditions apply to this certificate of appropriateness:

All work must be done in a craftsman-like manner, and must be completed within one year of the date this certificate was issued. Staff must approve any changes or additions to this certificate before work begins. Work that is not completed in accordance with this certificate may be subject to correction orders or citations. If you require technical assistance, please contact Historic Preservation staff as follows: Phone: (414) 286-5712 E-mail: hpc@milwaukee.gov.

If permits are required, you are responsible for obtaining them from the Milwaukee Development Center. If you have questions about permit requirements, please consult the Development Center's web site, www.milwaukee.gov/permits, or call (414) 286-8210.

City of Milwaukee Historic Preservation

Copies to: Development Center, Ald. Michael Murphy,



Site Plan indicating the location of the new condensers



Images of the site and concrete platform that will house the three outdoor condenser units



Additional image of the site and concrete platform that will house the three outdoor condenser units

Heat Pump Outdoor Unit

For: Reference Approval Review Construction

FEATURES

- Split coil heat exchanger
- Dual hinged electrical boxes for ease of maintenance
- High-efficiency vapor injection inverter compressors
- Intelligent Duty Cycle operation
- Night Silent operation
- Hinged service doors
- Built-in service console
- Built-in base pan heater
- Low Ambient Cooling

WARRANTY

- Compressor - 10-year limited warranty
- All other components - 10-year limited warranty
*See warranty for details

SPECIFICATIONS

PERFORMANCE

Cooling Capacity ¹ (Btu/h)	Nominal	408,000
	Rated ²	390,000
EER	Ducted	9.5
	Non-Ducted	9.5
IEER	Ducted	19
	Non-Ducted	18.7
Heating Capacity ¹ (Btu/h)		436,000
COP47	Ducted	3.26
	Non-Ducted	3.2
COP17	Ducted	2.25
	Non-Ducted	2.14

ELECTRICAL DATA

Power Supply (Volts/Phase/Hertz)	208-230/3/60
Minimum Circuit Ampacity (A)	84.8 + (2) 54.2
Maximum Overcurrent Protection (A)	90 + (2) 60
Compressor RLA (A)	34/34 + (2) 38.5
Number of Compressors	2 + (2) 1
Outdoor Fan Power Input (W)	1200/1200 + (2) 780/890
Outdoor Fan FLA (A)	4.0/4.3 + (2) 2.9/3.2

GENERAL DATA

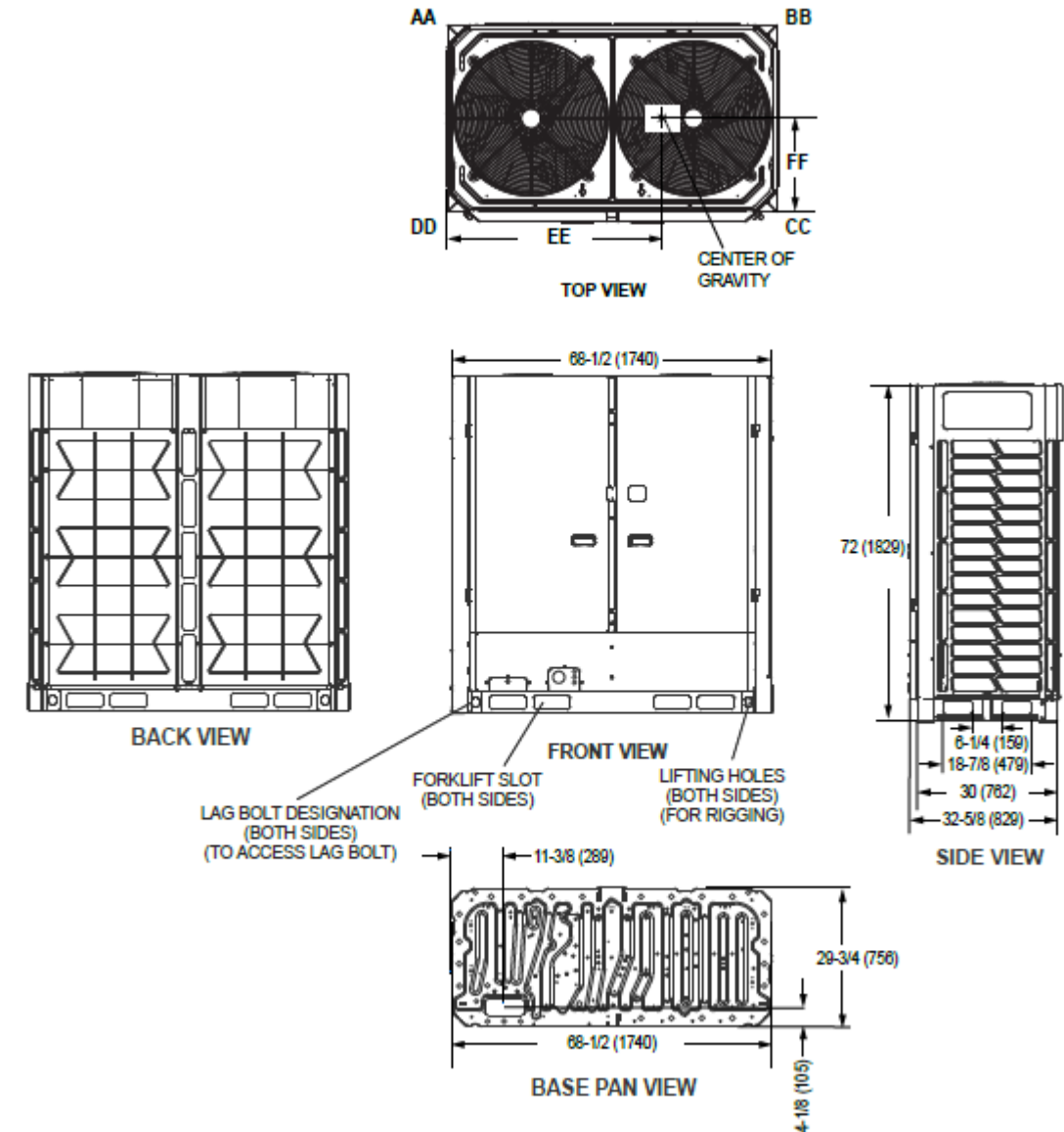
Connection Ratio	50% to 130%
Maximum Number of Indoor Units	64
Refrigerant Type	R-410A
Factory Refrigerant Charge (each unit)	23.8 lbs.

NOTES

- Cooling and Heating capacity data is rated at the following conditions:
Cooling: 80°FDB / 67°FWB Indoor, 95°FDB Outdoor
Heating: 70°FDB Indoor, 47°FDB / 43°FWB Outdoor
- Complies with AHRI 1230-2014 testing standards
- Operating Voltage Range 175V to 263V
- To achieve cooling lower than 5°F a Low ambient hood must be installed. This is purchased as an accessory.
- A local 115V power outlet is available as an accessory to provide local power for maintenance.



DIMENSIONS		VPB168	VPB120	VPB120
Unit	Height	72	64-3/8	64-3/8
Dimensions (in)	Width	68-1/2	52-3/4	52-3/4
	Depth	32-5/8	31-1/2	31-1/2
	Main System Piping (in)			
	Liquid Pipe Connection	3/4	5/8	5/8
	Gas Pipe Connection	1-3/8	1-1/8	1-1/8
Balancing Piping between Modules (in)				
	L.P. Gas Balance Pipe Connection	1-3/8	1-1/8	1-1/8
	H.P. Gas Balance Pipe Connection	3/4	3/4	3/4
	Oil Balance Pipe Connection	1/4	1/4	1/4
	Unit Net Weight (lb)	1118	794	794

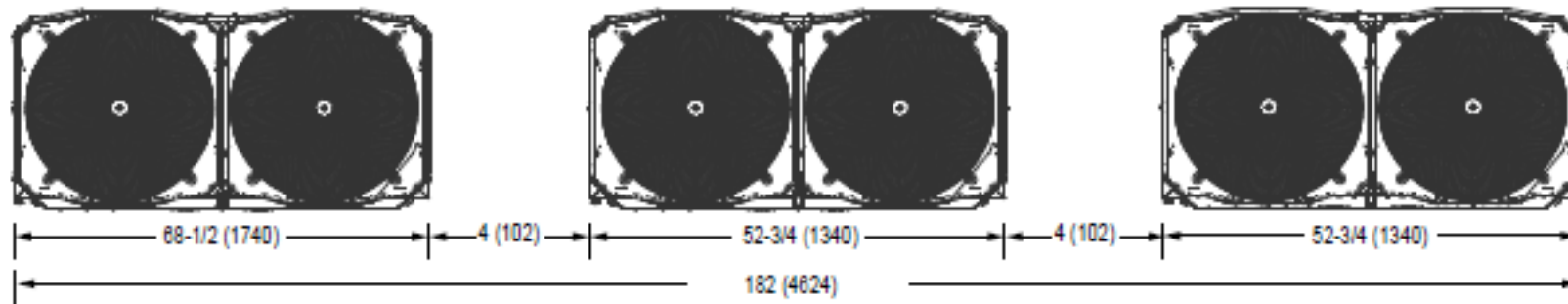


Specs for 3 Lennox VRF Outdoor Heat Pump units



MULTI-MODULE INFORMATION

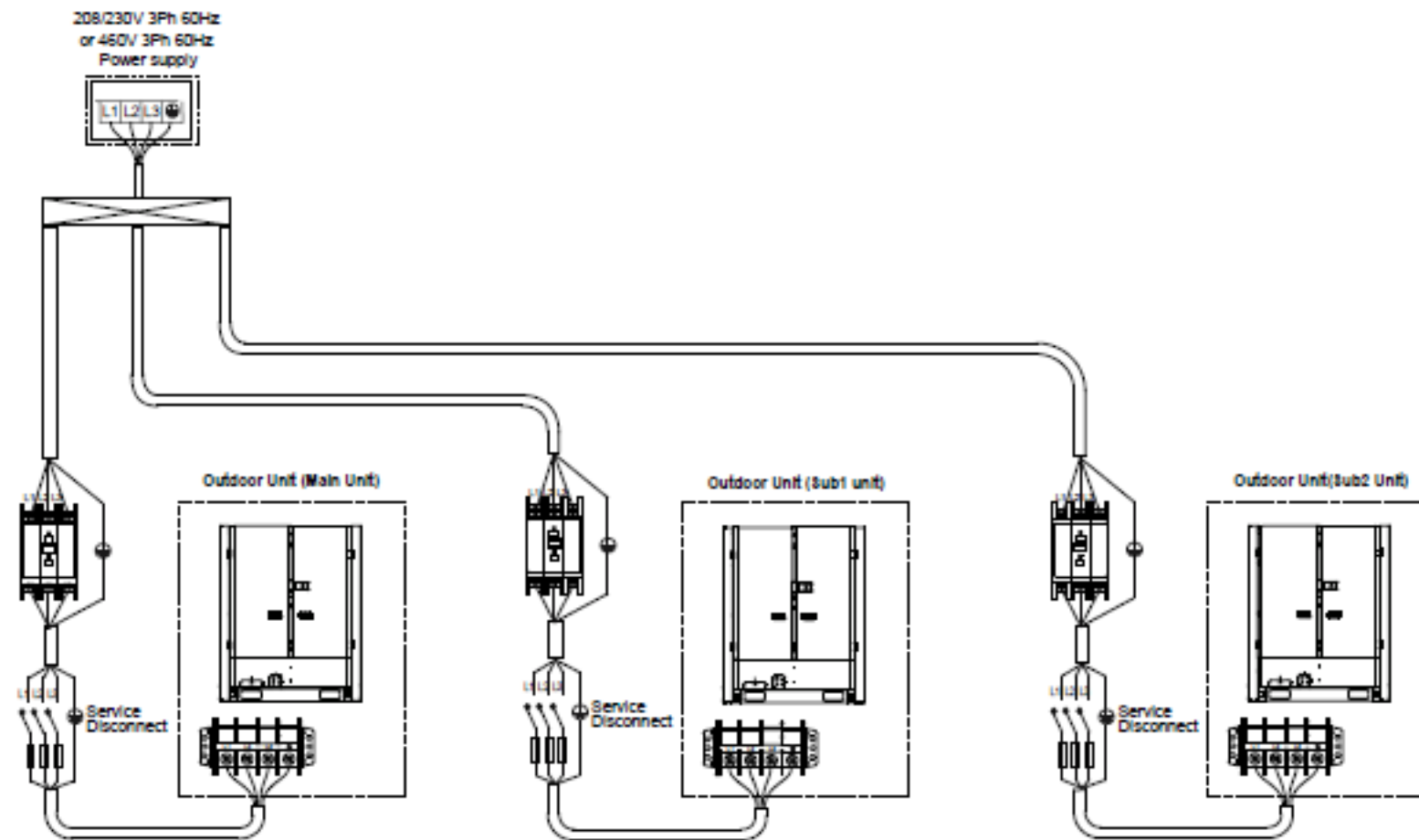
Multi-Module Dimensions



NOTE - All the outdoor units manifolded together should be installed at the same elevation.

TOP VIEW

Multi-Module Power



Specs for multi-module (3) configuration of Lennox VRF Outdoor Heat Pump units

See page 1 for electrical data.

Total system MCA is calculated by adding the MCA value of each module together to get the total system MCA.

Total system MOP is calculated by adding the MOP value of each module together to get the total system MCA.