



# Certificate of Appropriateness

Milwaukee Historic Preservation Commission/200 E. Wells Street/Milwaukee, WI 53202/phone 414-286-5712/fax 414-286-3004

**Property** 2576 N. 4TH ST., Frederick Ehlers, historic house  
**Description of work** Construct new wood accessible ramp.  
**Date issued** 7/14/2011


PTS ID 73961 COA, accessible ramp

In accordance with the provisions of Section 308-81(9) of the Milwaukee Code of Ordinances, the Milwaukee Historic Preservation Commission has issued a certificate of appropriateness for the work listed above. The work was found to be consistent with preservation guidelines. The following conditions apply to this certificate of appropriateness:

All work will be done according to attached drawings. Railings, newels and skirting must be painted upon completion. Please note that when new bare wood, treated or not, is exposed to the exterior elements for a period of only a week or two, the life the paint job applied over it is likely to be decreased. Skirting beneath the ramp may be either a lattice work or slats. See the illustrations in the COA.

All work must be done in a craftsman-like manner, and must be completed within one year of the date this certificate was issued. Staff must approve any changes or additions to this certificate before work begins. Work that is not completed in accordance with this certificate may be subject to correction orders or citations. If you require technical assistance, please contact Paul Jakubovich of the Historic Preservation staff as follows: Phone: (414) 286-5712 Fax: (414) 286-3004 E-mail: [pjakub@milwaukee.gov](mailto:pjakub@milwaukee.gov).

If permits are required, you are responsible for obtaining them from the Milwaukee Development Center. If you have questions about permit requirements, please consult the Development Center's web site, [www.mkedcd.org/build](http://www.mkedcd.org/build), or call (414) 286-8210.

  
Paul Jakubovich  
City of Milwaukee Historic Preservation

Copies to: Development Center, Ald. Milele Coggs, Contractor J.D.M. Development, Inspector Jim Friedrichs (286-5982)

C-1

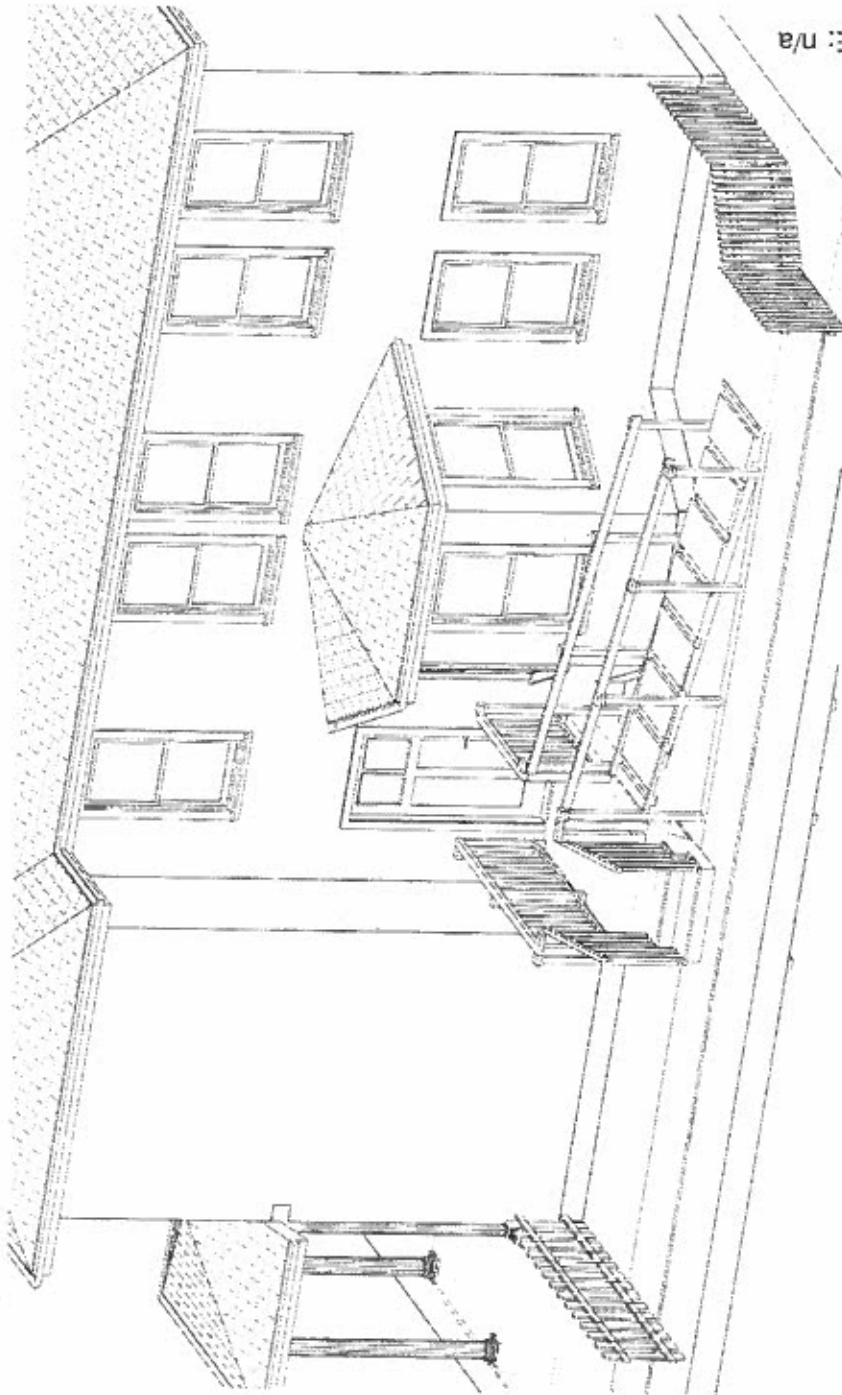
Sheet #:

Cover

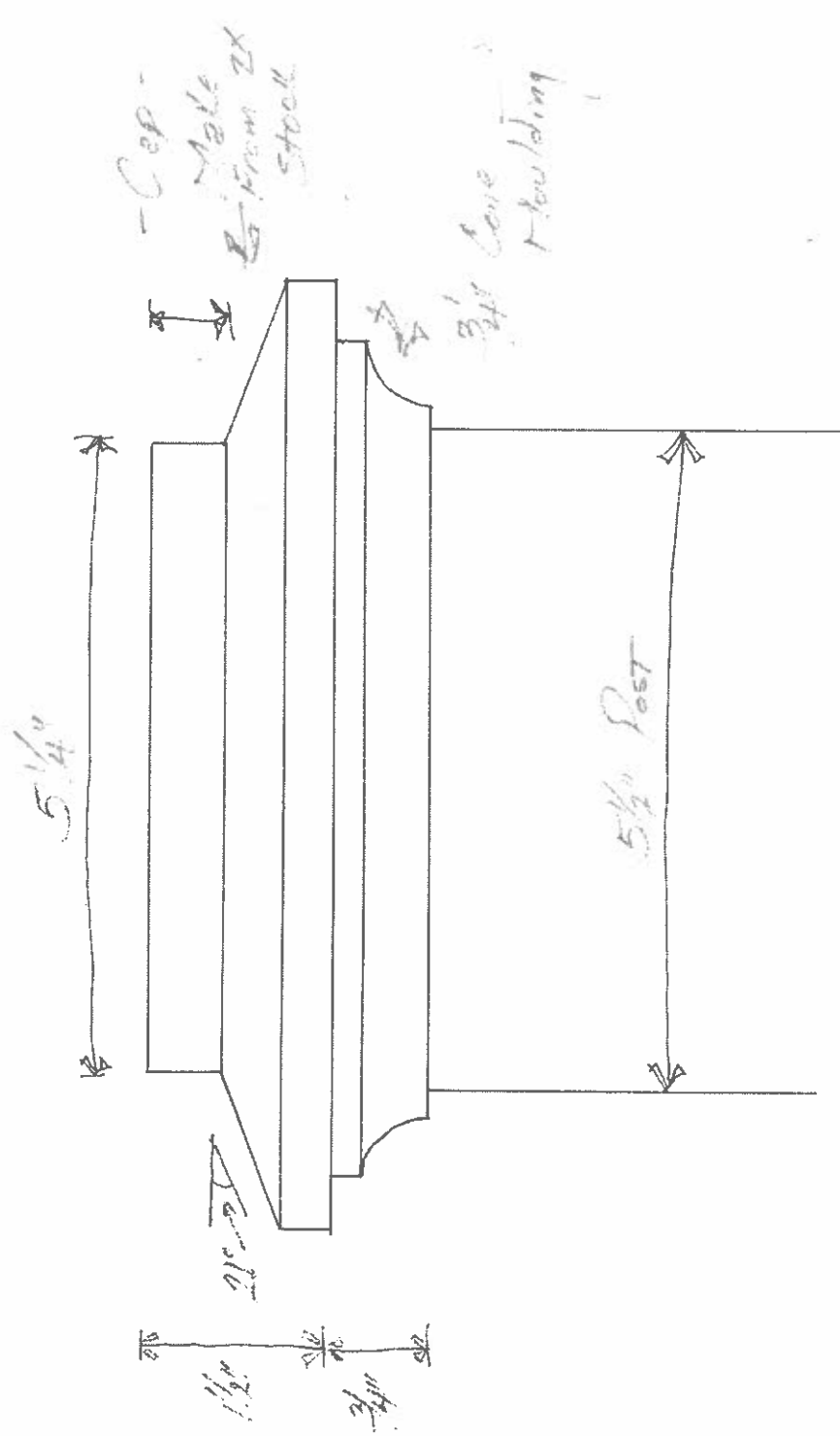
Sheet Type:

Savannah Jackson  
2576 N. 4th St.  
Milwaukee, WI  
by Design Trends ADA

SCALE: n/a



Ramp to be placed on south elevation of house.  
Railings, skirting and posts to be built  
according to attached drawings below



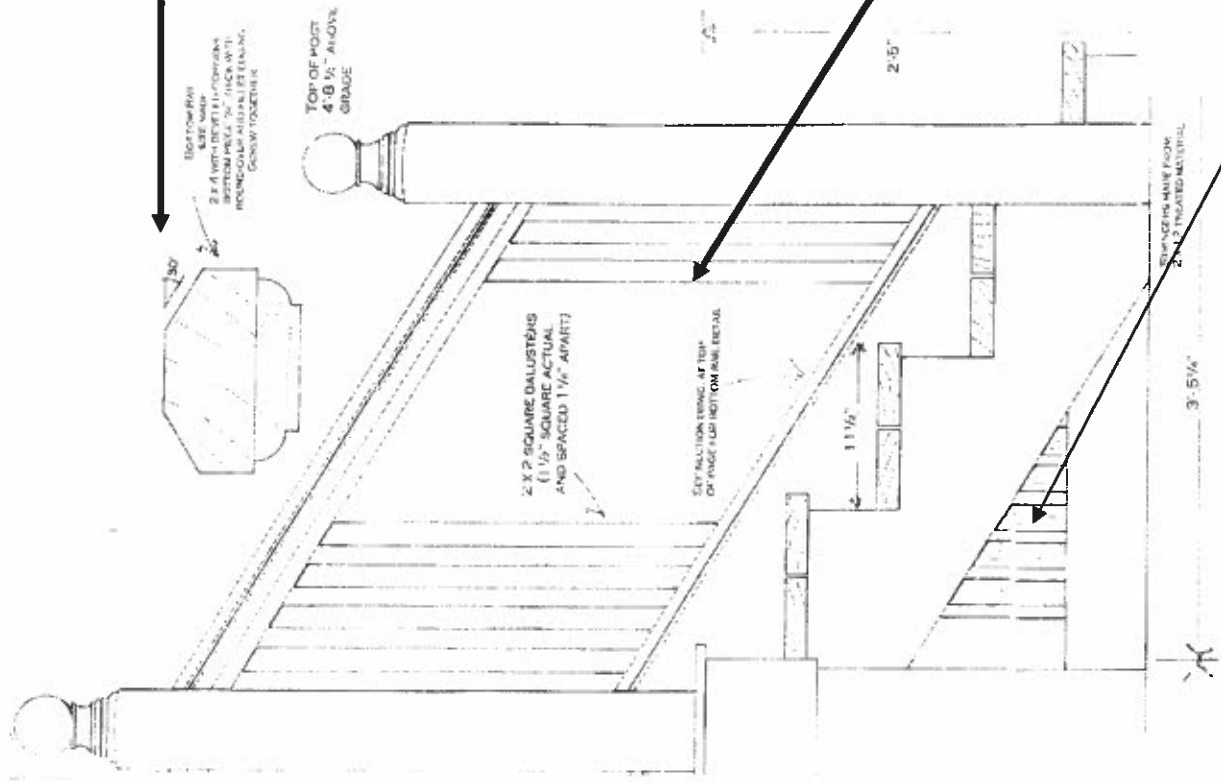
Option 1 for built-up box posts for all newels.

Built-up bottom rail

Option 2 for All newel posts which may be 6x6 topped with finial

Spindles, 1-1/2 square and spaced 1-1/4" apart.

Option 1 for ramp skirting is a frame of 1x6 or 1x8 with slats 1-3/4" wide and spaced 3/4" apart

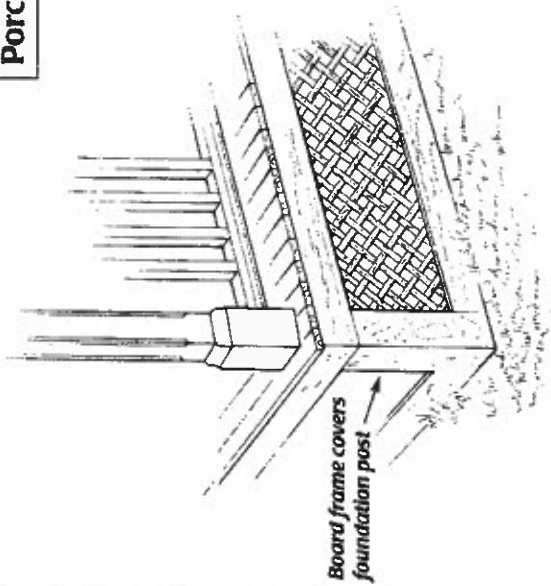




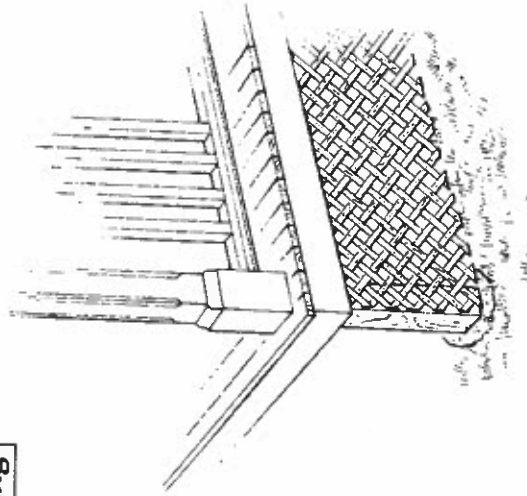
# Porches



## Porch Skirting



Skirting, such as this lattice panel, enclosed the area beneath the porch floor. It should always be installed with a continuous board frame around it that is wide enough to cover the rough framing lumber that supports the porch deck.



Do not install a lattice skirting without a frame around it. The rough framing lumber that supports the porch will show through and the raw edges of the lattice look unfinished.

This is option 2 for lattice and frame skirting that can be used beneath the floor of the ramp. The other is the frame with slats shown elsewhere in this COA.