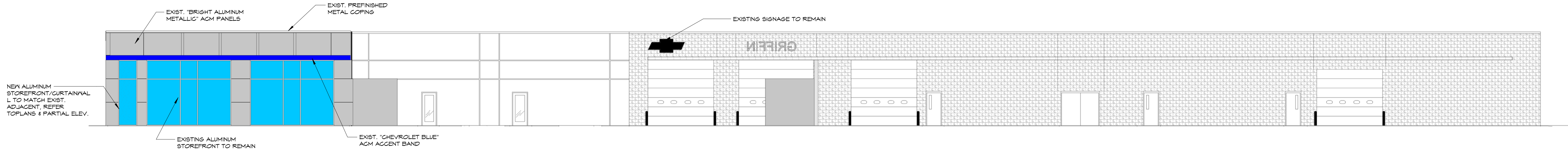
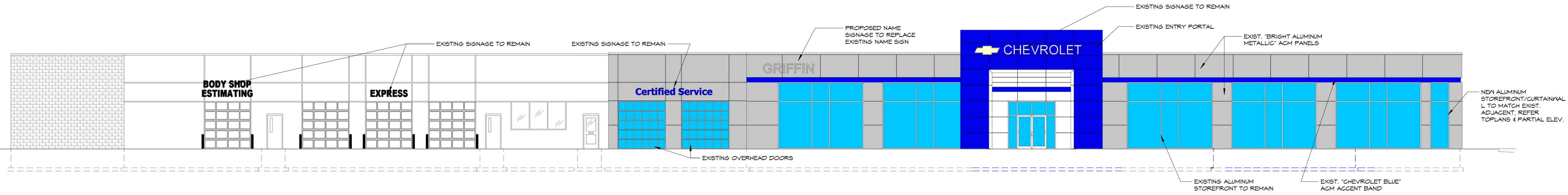




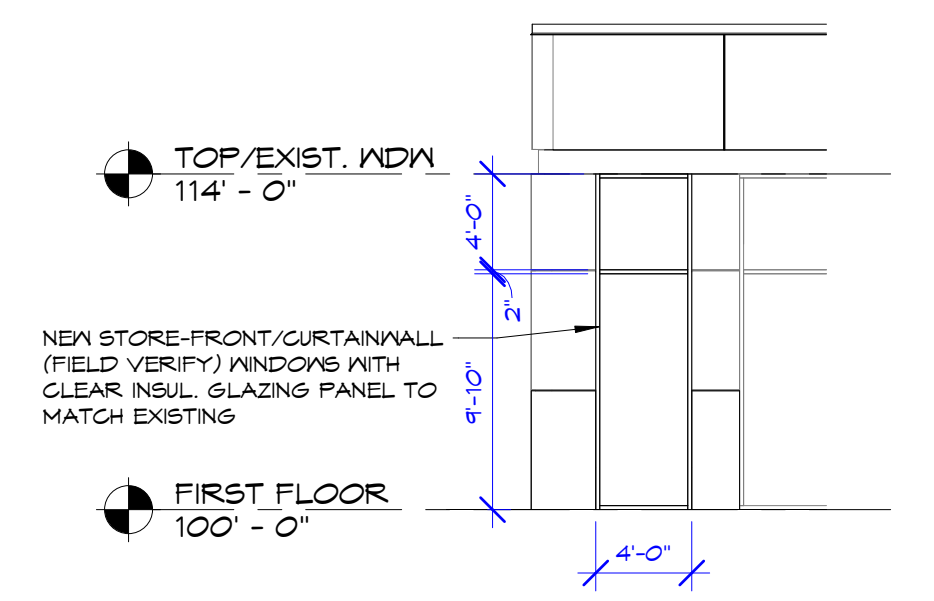
**3 EAST ELEVATION**  
 A-4.0 3/32" = 1'-0"



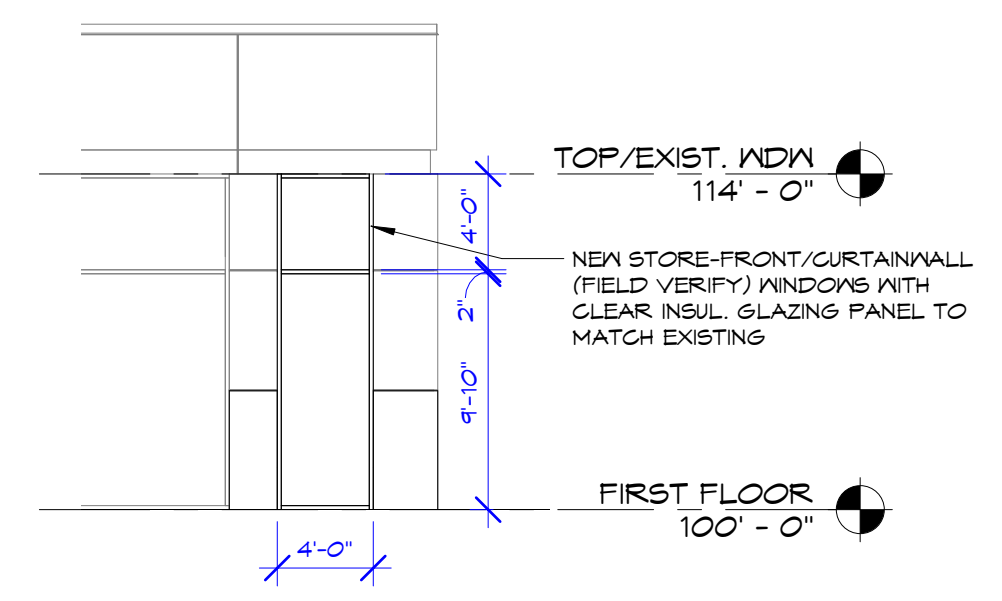
**2 NORTH ELEVATION**  
 A-4.0 3/32" = 1'-0"



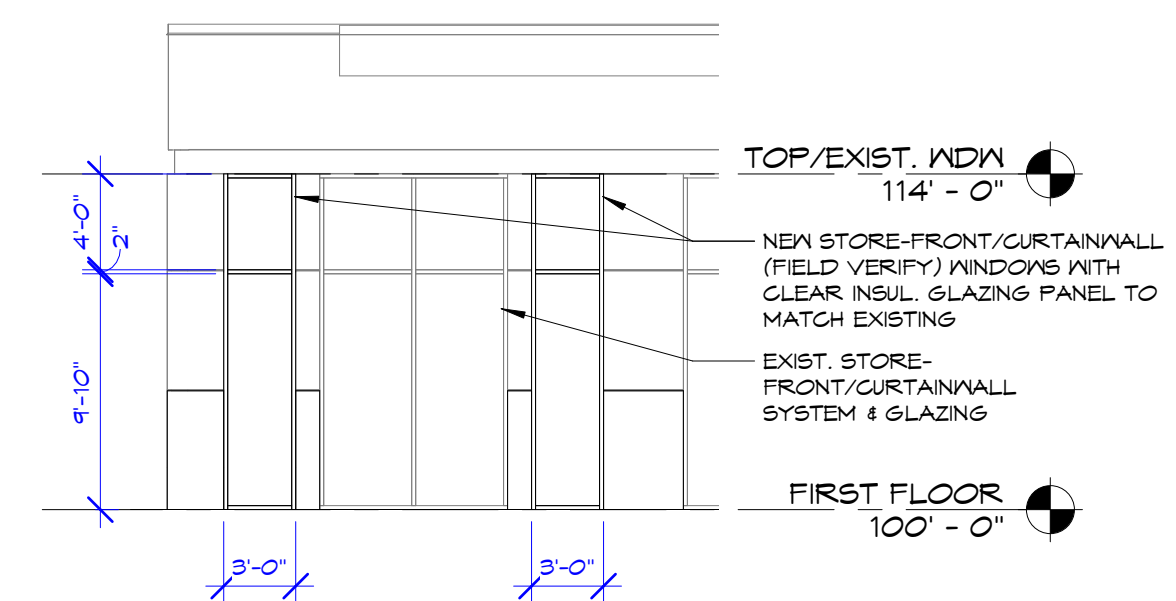
**1 SOUTH ELEVATION**  
 A-4.0 3/32" = 1'-0"



**6 PARTIAL NORTH ELEV.**  
 A-4.0 1/8" = 1'-0"



**5 PARTIAL SOUTH ELEV.**  
 A-4.0 1/8" = 1'-0"



**4 PARTIAL EAST ELEV. (SOUTH END)**  
 A-4.0 1/8" = 1'-0"

A BUILDING RENOVATION FOR:  
**GRIFFIN CHEVROLET**  
 MILWAUKEE, WISCONSIN

**"COPYRIGHT NOTICE"**  
 This design, drawing and detail is the copyrighted property of KELLER, INC. No part hereof shall be copied, duplicated, distributed, disclosed or made available to anyone without the expressed written consent of KELLER, INC.

REVISIONS


PROJECT MANAGER: B. POCH  
 DESIGNER: ---  
 DRAWN BY: BJS  
 EXPEDITOR: A. COHEN  
 SUPERVISOR: R. ELIES  
 PRELIMINARY NO: ---  
 CONTRACT NO: XX-XXX  
 DATE: 05/12/16  
 SHEET: A-4.0