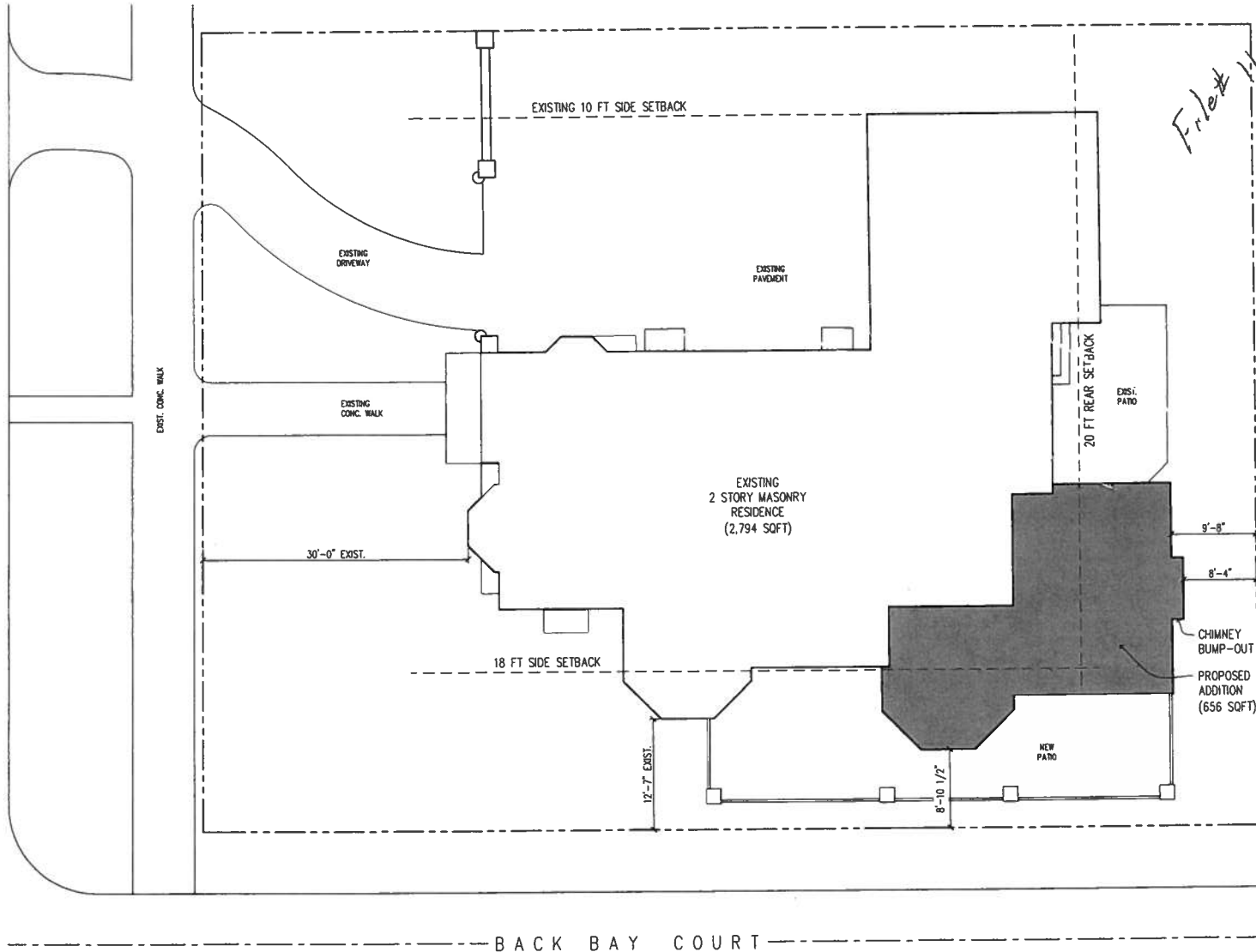


TERRACE AVE



File # 110373
New Plan

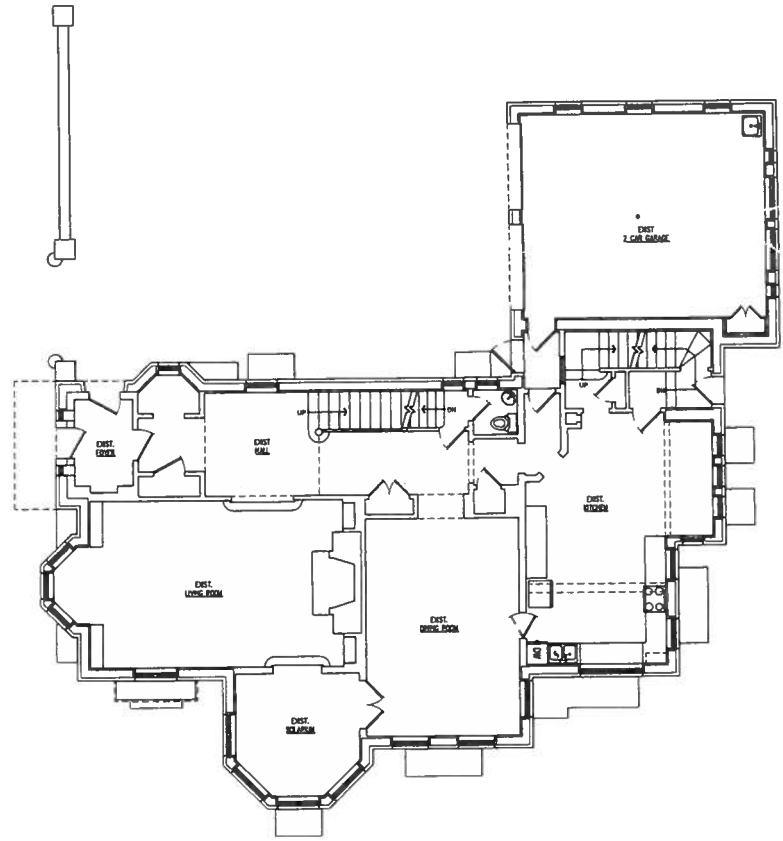
BACK BAY COURT

PROPOSED REMODELING TO
2134 N TERRACE AVE
MILWAUKEE, WI

SITE PLAN
SCALE: 3/16"=1'-0"

SEPTEMBER 7, 2011

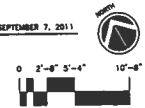


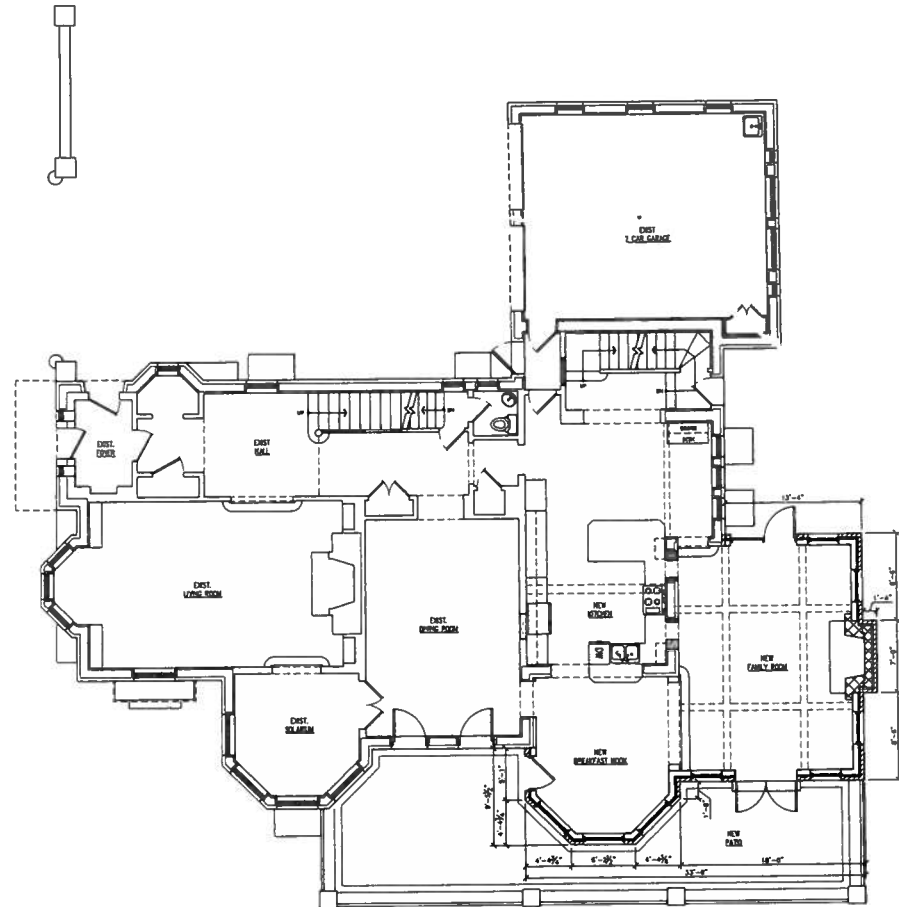


PROPOSED REMODELING TO
2134 N TERRACE AVE
MILWAUKEE, WI

EXISTING FIRST FLOOR PLAN
SCALE: 3/16"=1'-0"

SEPTEMBER 7, 2011



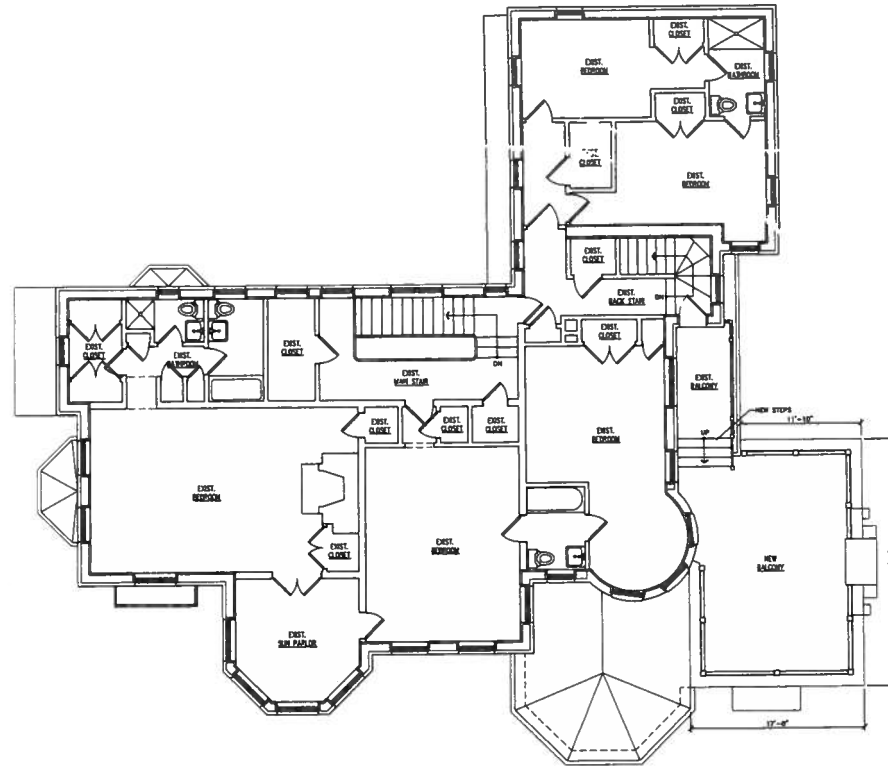


PROPOSED REMODELING TO
 2134 N TERRACE AVE
 MILWAUKEE, WI

NEW FIRST FLOOR PLAN
 SCALE 3/16"=1'-0"

SEPTEMBER 7, 2011

0 2'-0" 5'-4" 10'-8"

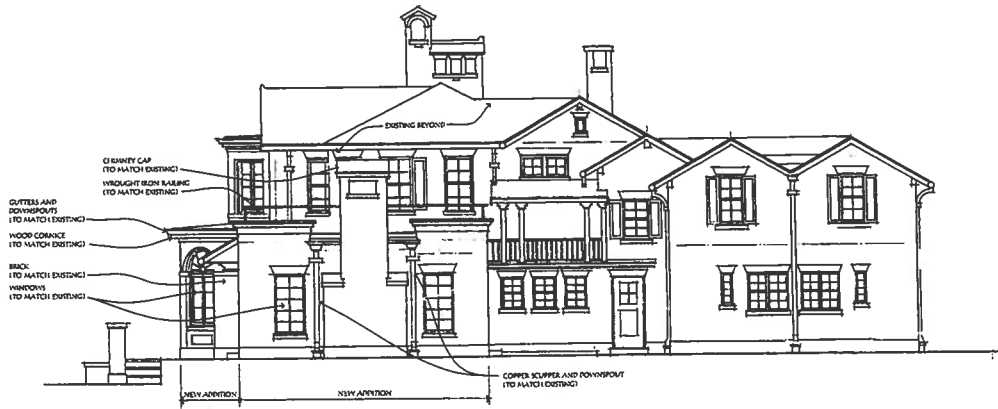


PROPOSED REMODELING TO
 2134 N TERRACE AVE
 MILWAUKEE, WI

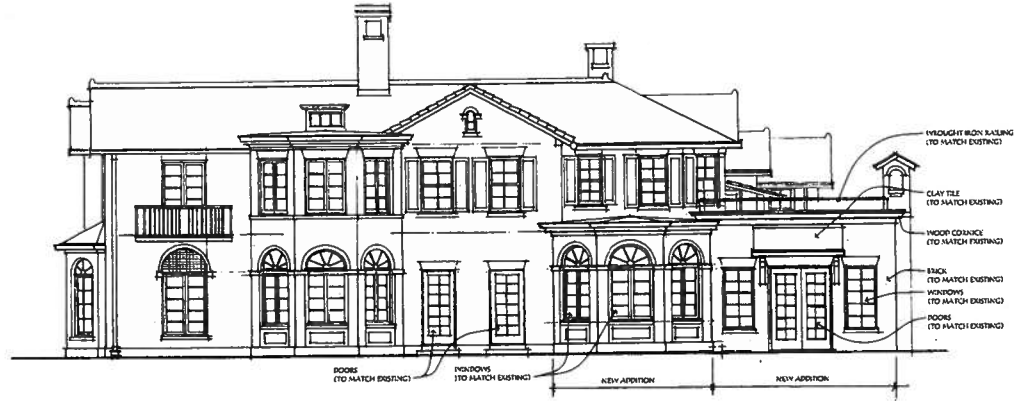
NEW SECOND FLOOR PLAN
 SCALE: 3/16"=1'-0"

SEPTEMBER 7, 2011

0 2'-0" 5'-0" 10'-0"



EAST ELEVATION
SCALE: 3/16"=1'-0"



SOUTH ELEVATION
SCALE: 3/16"=1'-0"

PROPOSED REMODELING TO
2134 N TERRACE AVE
MILWAUKEE, WI



WEST ELEVATION
SCALE: 3/16"=1'-0"



NORTH ELEVATION
SCALE: 3/16"=1'-0"

PROPOSED REMODELING TO
2134 N TERRACE AVE
MILWAUKEE, WI