

PORT OF MILWAUKEE PRESENTATION TO CAPITAL IMPROVEMENTS COMMITTEE 9-4-2014





The Port of Milwaukee

**The Port of Milwaukee is a critical
transportation and distribution
link to Southeastern Wisconsin's
Economy**

The Commercial Port's **Mission**

The Mission of the Port is to enhance the overall economic and social environment of our region by stimulating trade, business and employment.

Consistent with the Port's water-related location, the Port shall strive to be a premier provider of transportation and distribution services for its commercial customers and support public recreation, leisure and other uses the Port deems to be in the public interest.

**Shipping through the Port of
Milwaukee saves area
consumers over \$58 million
annually on transportation
costs.**



PORT OF MILWAUKEE PRESENTATION TO CAPITAL IMPROVEMENTS COMMITTEE 9-4-2014

OVERVIEW

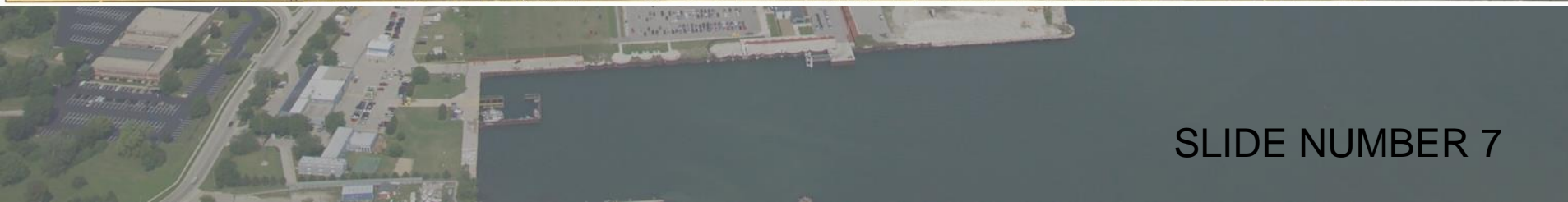
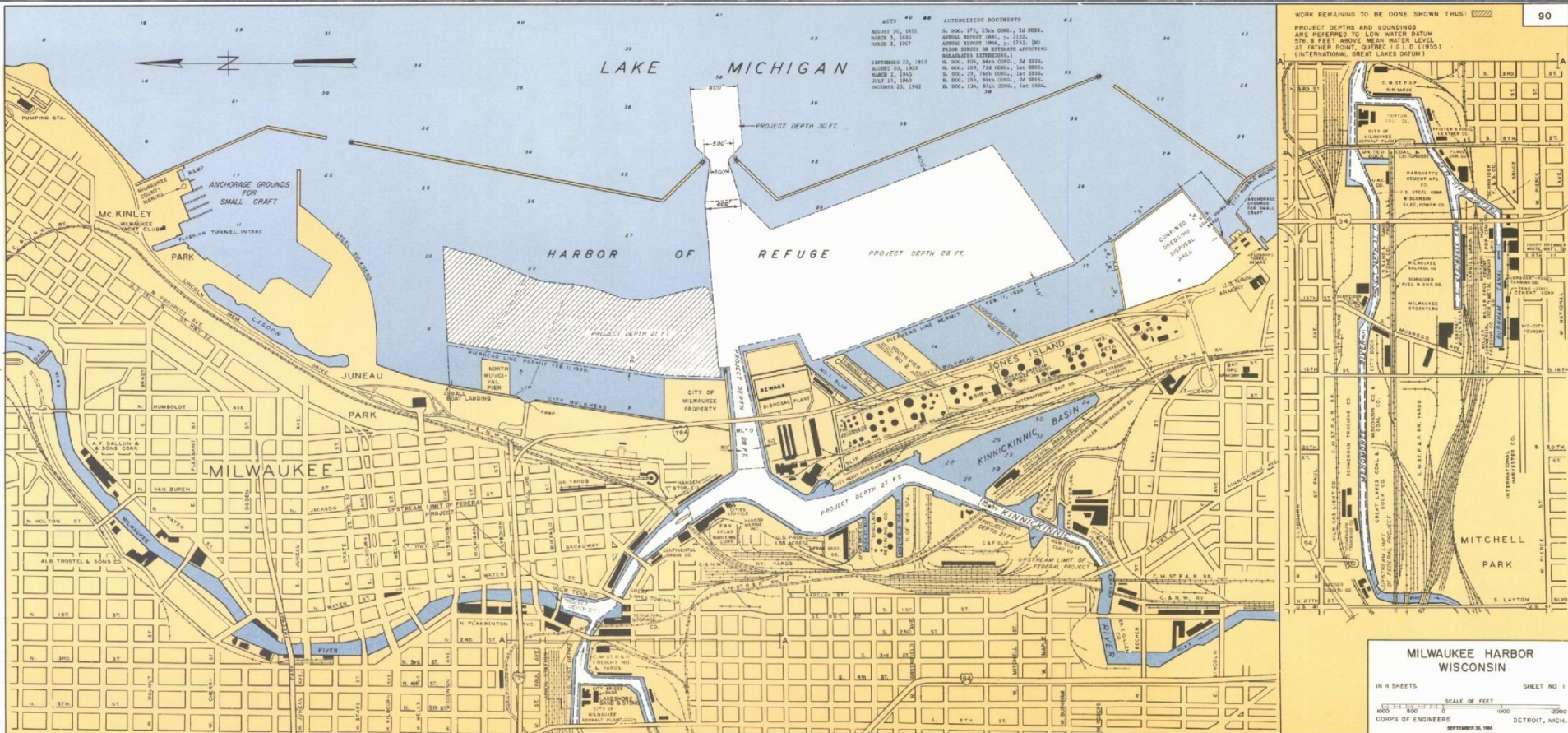
- ⚓ WATERWAYS
- ⚓ DOCKWALLS
- ⚓ DREDGING
- ⚓ SHIP APRONS & ROADS
- ⚓ PIERS & TERMINALS
- ⚓ PIPELINES
- ⚓ SEWERS
- ⚓ WATER LINES
- ⚓ ELECTRIC SERVICES
- ⚓ RAILROAD TRACK
- ⚓ BUILDINGS
- ⚓ EQUIPMENT
- ⚓ ENVIRONMENTAL REMEDIATION
- ⚓ GRANTS

PORT OF MILWAUKEE PRESENTATION TO CAPITAL IMPROVEMENTS COMMITTEE 9-4-2014

⚓ WATERWAYS

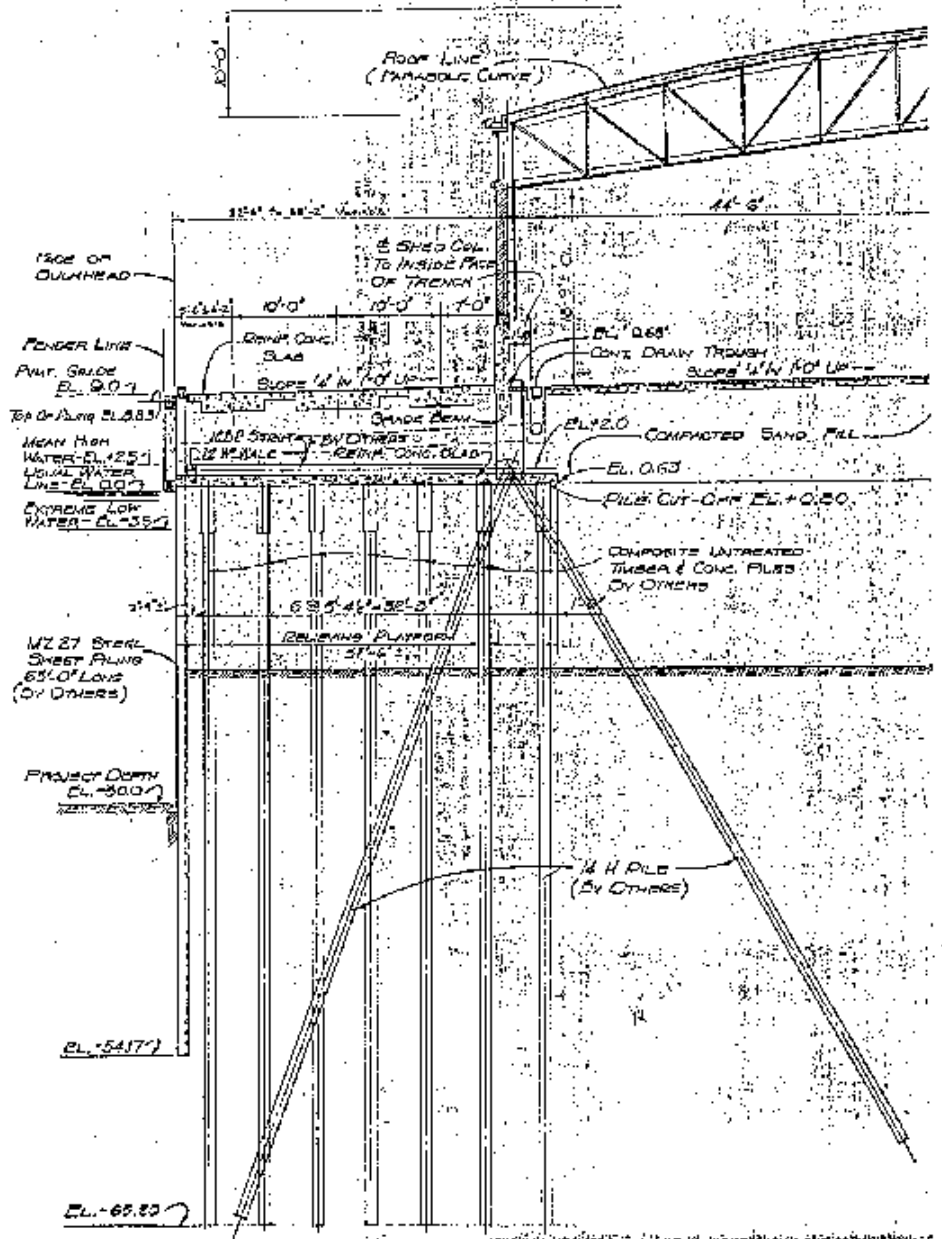
SLIDE NUMBER 6

PORT OF MILWAUKEE PRESENTATION TO CAPITAL IMPROVEMENTS COMMITTEE 9-4-2014



PORT OF MILWAUKEE PRESENTATION TO CAPITAL IMPROVEMENTS COMMITTEE 9-4-2014

⚓ DOCKWALLS





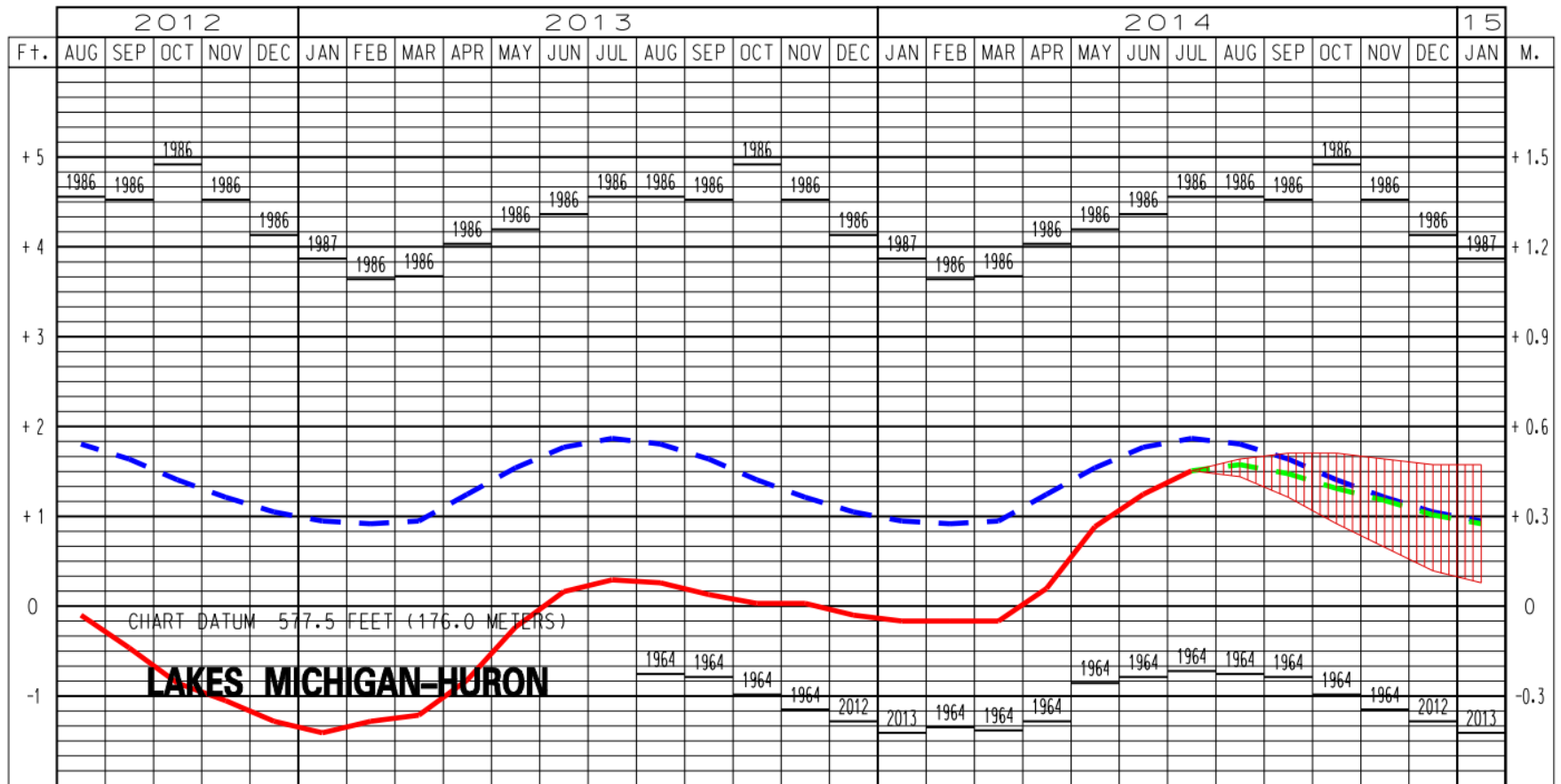


PORT OF MILWAUKEE PRESENTATION TO CAPITAL IMPROVEMENTS COMMITTEE 9-4-2014

⚓ DREDGING

SLIDE NUMBER 12

LAKES MICHIGAN-HURON WATER LEVELS - AUGUST 2014



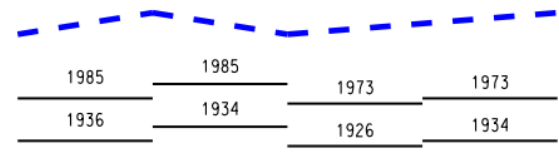
LEGEND

LAKE LEVELS

RECORDED
PROJECTED



AVERAGE **
MAXIMUM **
MINIMUM **



** Average, Maximum and Minimum for period 1918-2013

Like snow that fall on roads, material that settles out in the shipping channel needs to be removed to kept the ships moving.



The material is dredged and placed in a dredge material management facility creating new usable land over time.



PORT OF MILWAUKEE PRESENTATION TO CAPITAL IMPROVEMENTS COMMITTEE 9-4-2014

⚓ SHIP APRONS & ROADS

Type of Dock loading





IRYDA
LIMASSOL



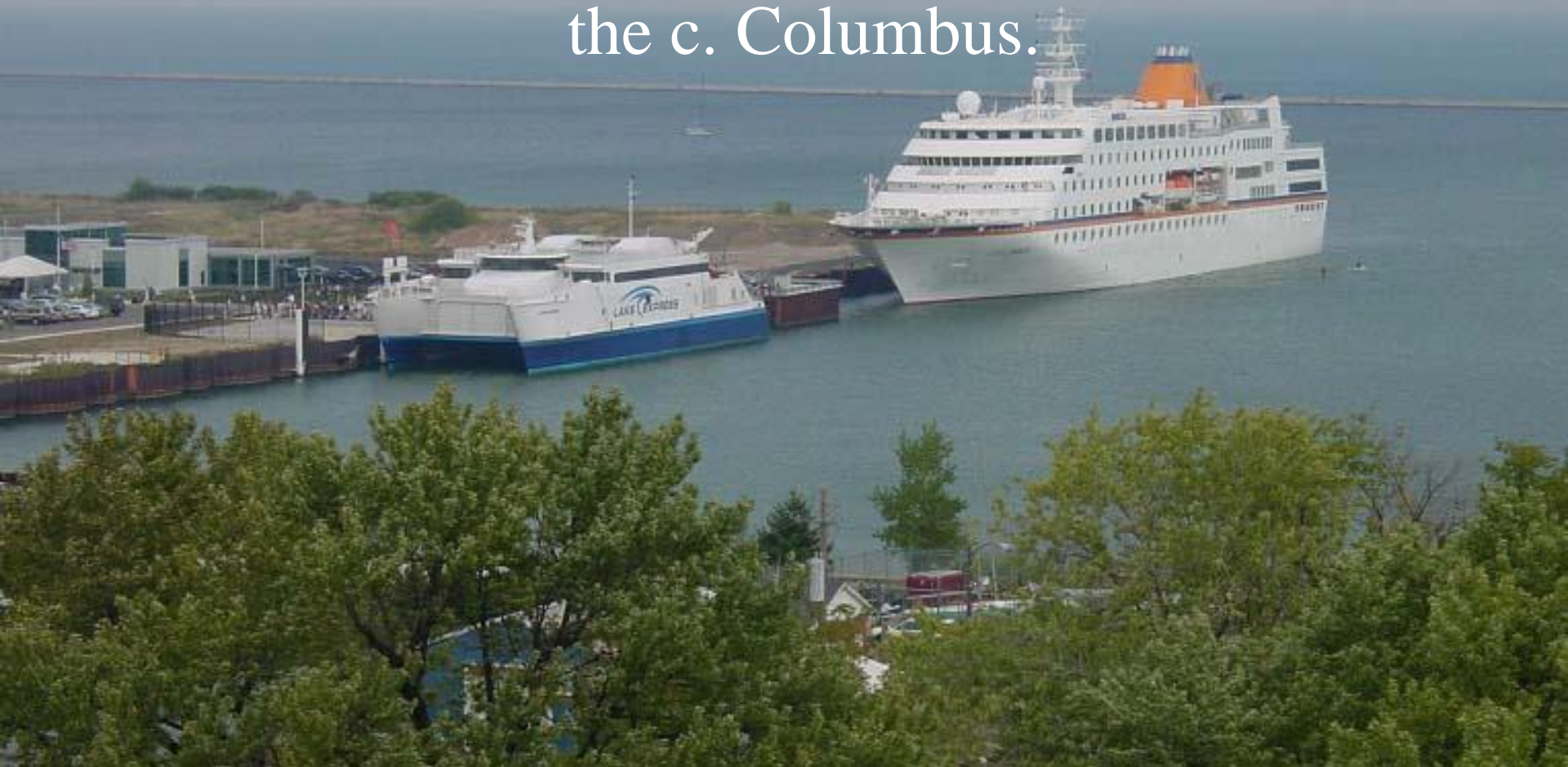


PORT OF MILWAUKEE PRESENTATION TO CAPITAL IMPROVEMENTS COMMITTEE 9-4-2014

⚓ PIERs & TERMINALS



International and domestic cruise ship business the c. Columbus.



Discovery World at Pier Wisconsin

cruise ship dock



Small ships like the Grand Mariner make 4 to 5 trips each year to the cruise ship dock at Pier Wisconsin.

PORT OF MILWAUKEE PRESENTATION TO CAPITAL IMPROVEMENTS COMMITTEE 9-4-2014

⚓ PIPELINES





PORT OF MILWAUKEE PRESENTATION TO CAPITAL IMPROVEMENTS COMMITTEE 9-4-2014

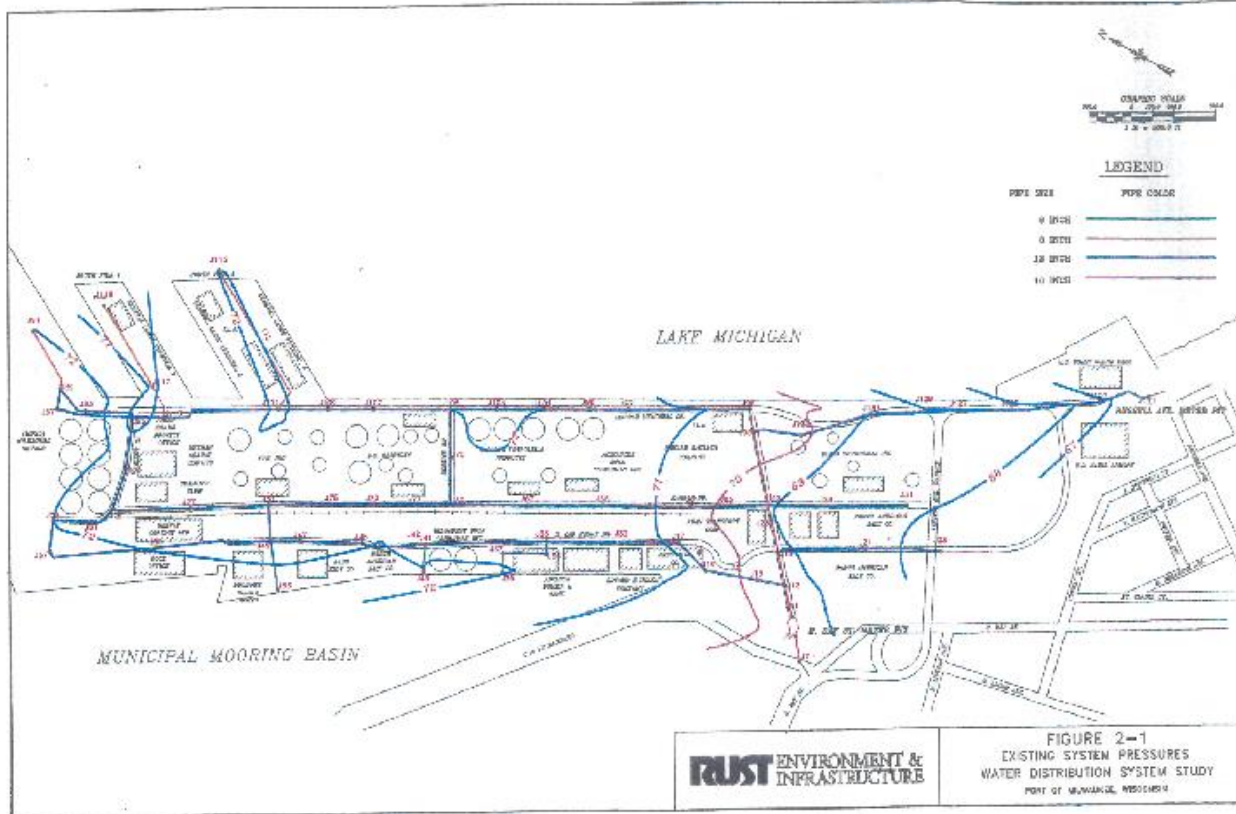
⚓ SEWERS

PORT OF MILWAUKEE PRESENTATION TO CAPITAL IMPROVEMENTS COMMITTEE 9-4-2014

⚓ WATER LINES

SLIDE NUMBER 28

PORT OF MILWAUKEE PRESENTATION TO CAPITAL IMPROVEMENTS COMMITTEE 9-4-2014



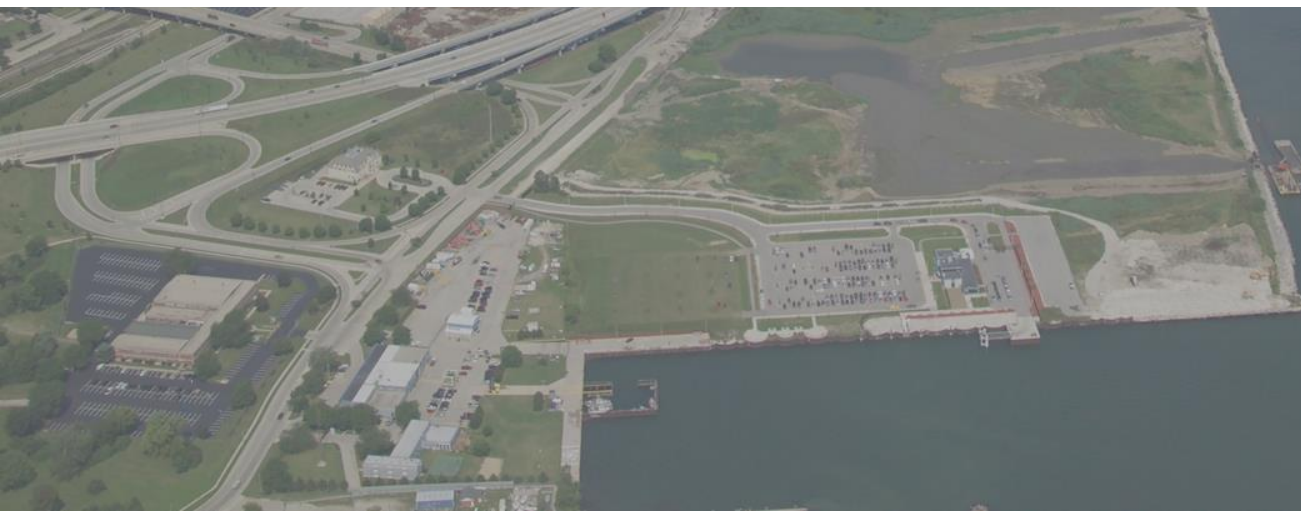
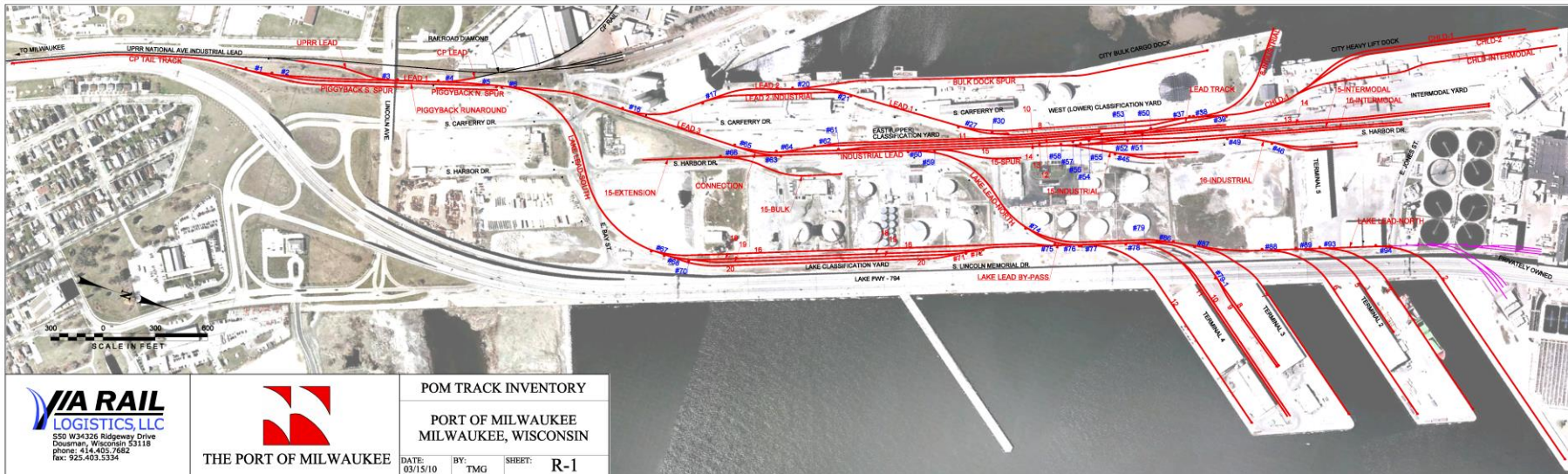
PORT OF MILWAUKEE PRESENTATION TO CAPITAL IMPROVEMENTS COMMITTEE 9-4-2014

⚓ ELECTRIC SERVICES

PORT OF MILWAUKEE PRESENTATION TO CAPITAL IMPROVEMENTS COMMITTEE 9-4-2014

 RAILROAD TRACK

PORT OF MILWAUKEE PRESENTATION TO CAPITAL IMPROVEMENTS COMMITTEE 9-4-2014



Type of Dock Loading





UTLX 672559

CRDX



PORT OF MILWAUKEE PRESENTATION TO CAPITAL IMPROVEMENTS COMMITTEE 9-4-2014

📍 BUILDINGS

PORT OF MILWAU GENERAL CARGO TERMINA



**FEDERAL
MARINE
TERMINALS, INC.**





LAKE ONTARIO
MAJURO

PORT OF MILWAUKEE
GENERAL CARGO TERMINAL 2

DANGER
NO SWIMMING
NO BOATING

PORT OF MILWAUKEE PRESENTATION TO CAPITAL IMPROVEMENTS COMMITTEE 9-4-2014





PORT OF MILWAUKEE PRESENTATION TO CAPITAL IMPROVEMENTS COMMITTEE 9-4-2014

⚓ EQUIPMENT



PORT OF MILWAUKEE PRESENTATION









PORT OF MILWAUKEE PRESENTATION TO CAPITAL IMPROVEMENTS COMMITTEE 9-4-2014

⚓ ENVIRONMENTAL REMEDIATION

PORT OF MILWAUKEE PRESENTATION TO CAPITAL IMPROVEMENTS COMMITTEE 9-4-2014

⚓ GRANTS

An aerial photograph of Milwaukee, Wisconsin, showing the city skyline, the harbor, and the Milwaukee River. The image is used as a background for a presentation slide. The text is overlaid on the image.

PORT OF MILWAUKEE PRESENTATION
TO CAPITAL IMPROVEMENTS
COMMITTEE 9-4-2014

QUESTIONS ?
THANKS YOU !