

397

S.E. 1/4 SEC. 29, T.7N., R.22E.

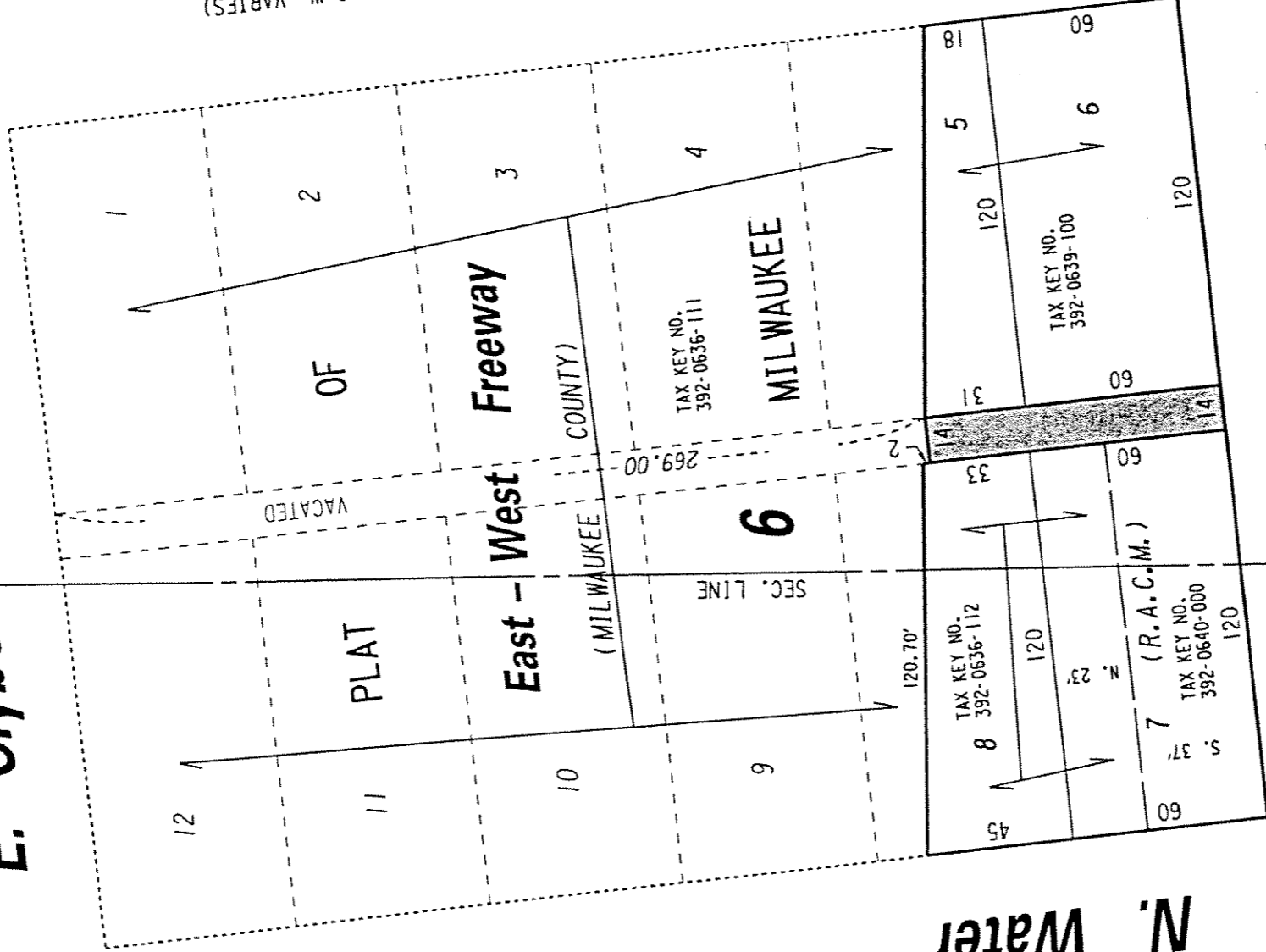
396

S.W. 1/4 SEC. 28, T.7N., R.22E.

E. Clybourn St.
(80' R.O.W.)

St.

(R.O.W. VARIES)



PUBLIC ALLEY PROPOSED TO BE VACATED

EXHIBIT "A"
FILE NO. 040091

INFRASTRUCTURE SERVICES DIVISION

MILWAUKEE, WISCONSIN

ASSIGNED TO: W.E. FUCHS
DRAWN BY: W.E.F.
PROJECT/GRANT NO.: WKS2337192
APPROVED BY:

CH'K'D. BY: W.E. FUCHS
DATE: JUNE 4, 2004
SCALE: 1" = 50'

Maria L. ...
CENTRAL DRAFTING & RECORDS MANAGER
CIVIL ENGINEER