

S.W. 1/4 SEC. 21, T.7N., R.22E.

360

(66' R.O.W.)

E. Brady St.

St.

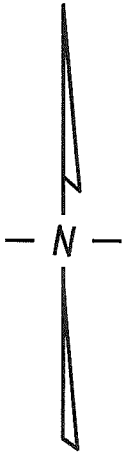
1/4 SEC. LINE

33

33

St.

St.

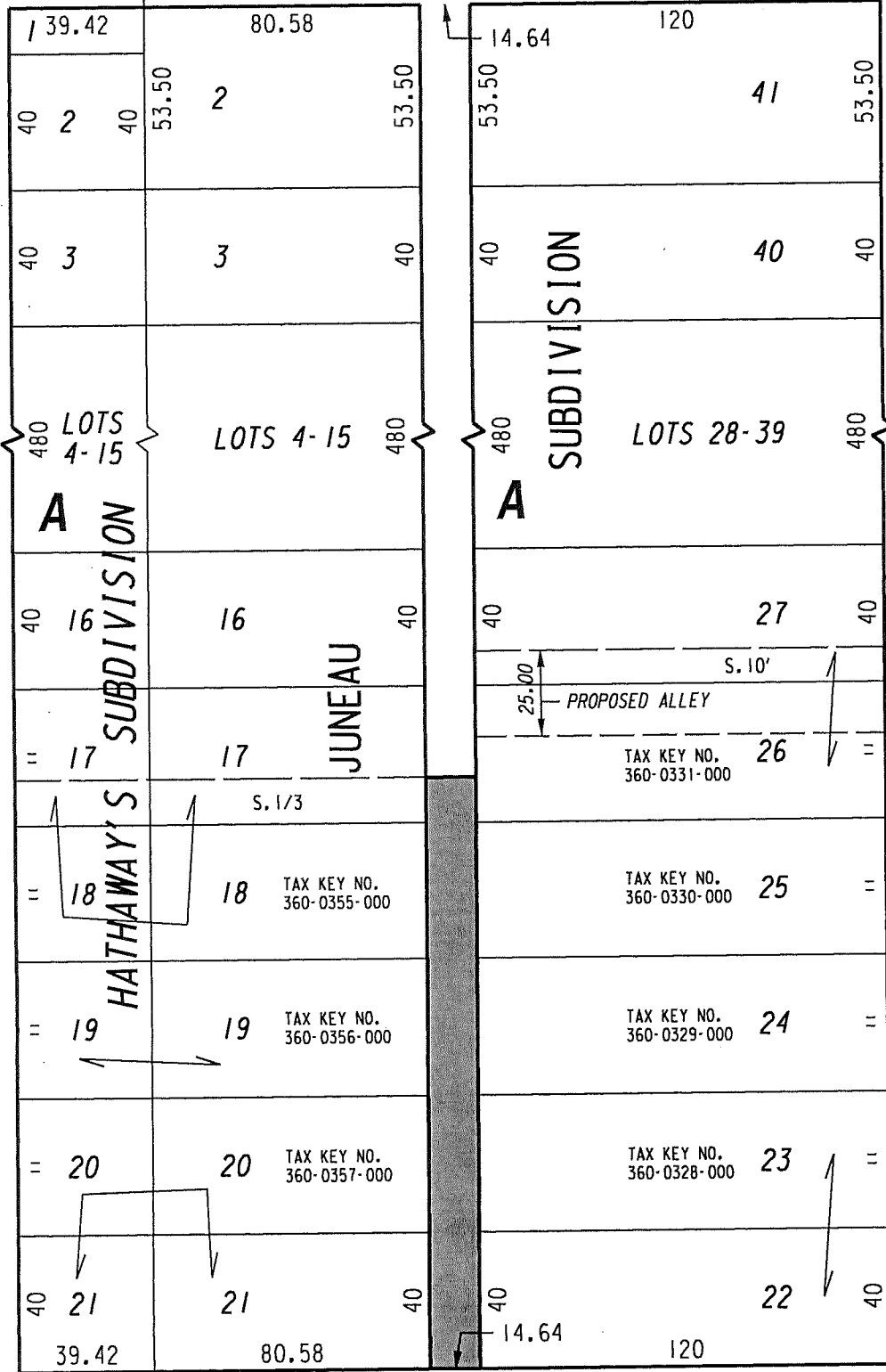


(80.33' R.O.W.)

(80' R.O.W.)

N. Van Buren

N. Cass



E. Pleasant

(80' R.O.W.)

St.



PORTION OF PUBLIC ALLEY PROPOSED TO BE VACATED

EXHIBIT "A" FILE NO. 170602

INFRASTRUCTURE SERVICES DIVISION

MILWAUKEE, WISCONSIN

ASSIGNED TO: W. FUCHS

CH'K'D. BY: W. FUCHS

DRAWN BY: W.F.

DATE: OCT. 12, 2017

PROJECT/GRANT NO.: WK52337401

SCALE: 1" = 50'

APPROVED BY:

*John Hart*

*[Signature]*

CENTRAL DRAFTING & RECORDS MANAGER

CITY ENGINEER