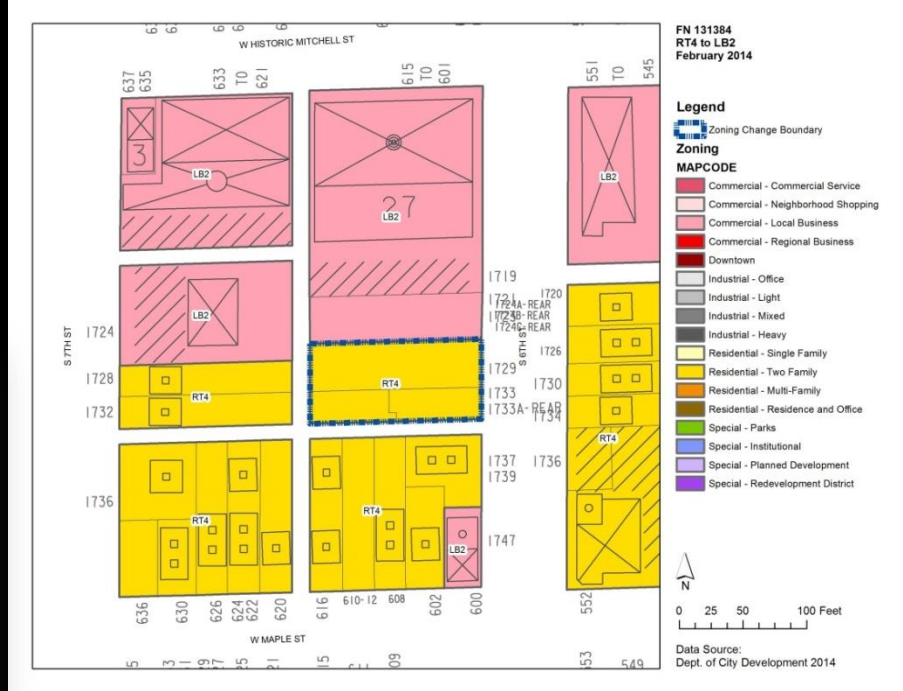
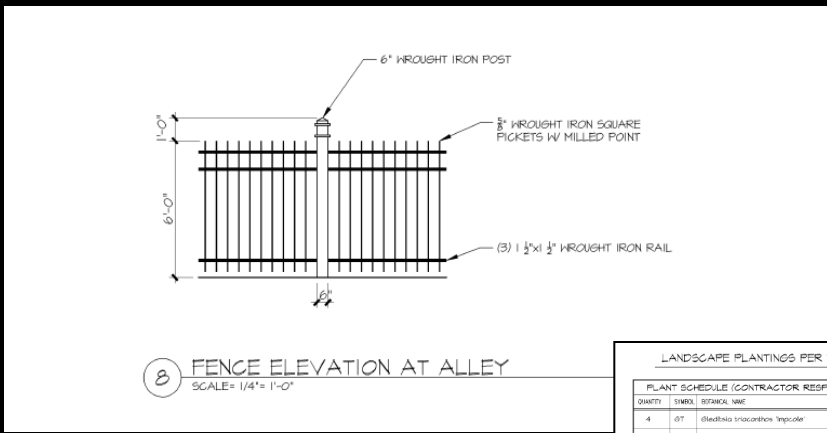
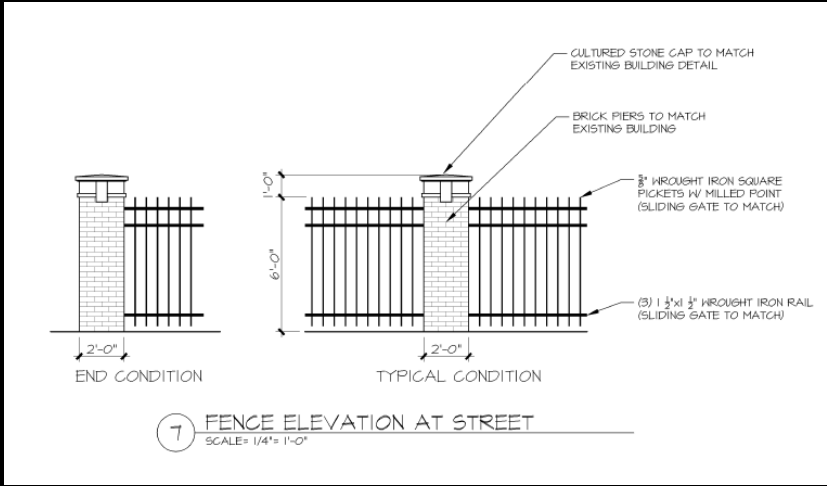
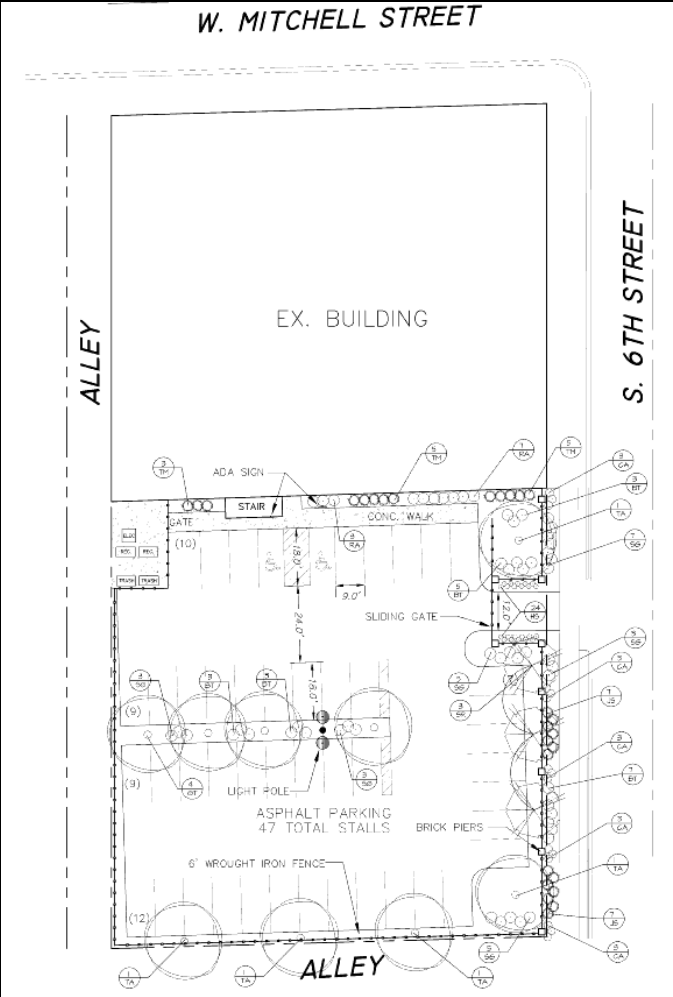


File No. 131384. An ordinance relating to the change in zoning from Two-Family Residential to Local Business, for parking, on land located on the west side of South 6th Street, south of West Historic Mitchell Street, in the 12th Aldermanic District.



Houses have been razed

File No. 131384. An ordinance relating to the change in zoning from Two-Family Residential to Local Business, for parking, on land located on the west side of South 6th Street, south of West Historic Mitchell Street, in the 12th Aldermanic District.



LANDSCAPE PLANTINGS PER TABLE 245-405 TYPE B, ALONG STREET

| QUANTITY | SYMBOL | SYMBOL NAME | COMMON NAME | MATURE SIZE | PLANTING SIZE | TYPE |
|----------|--------|--|----------------------|-------------|---------------|--------|
| 4 | BT | (Saxifraga tricuspidata 'Impicola') | Imperial Honeysuckle | 35'-40' | B / B | 2 1/2' |
| 5 | TA | Tilia americana 'Radoncl' | Radoncl Linden | 35'-40' | B / D | 2 1/2' |
| 3 | SR | Syringa reticulata 'Vary Silk' | Vary Silk tree Lilac | 15'-20' | B / B | 2" |
| 21 | BT | Berberis thunbergii 'Rose dio' | Rose dio Barberry | 3'-4' | POT | 2 Gall |
| 10 | RA | Ribes alpinum | Alpine Currant | 3'-4' | POT | 18" |
| 26 | SS | Spiraea x 'Goldflame' | Goldflame Spiraea | 3'-4' | POT | 2 Gall |
| 14 | JB | Juniperus sibirica 'Broadmoor' | Broadmoor Juniper | 2' x 4' | POT | 5 Gall |
| 13 | TM | Taxus x media 'Nungen' | Nungen Yew | 3' x 5' | POT | 18" |
| 5 | CA | Colanagrostis auctorea 'Karl Foerster' | Karl Foerster Grass | 42"-48" | POT | 1 Gall |
| 24 | H5 | Hemerocallis x 'Stella D'oro' | Stella D'oro Daylily | 18"-24" | POT | 1 Gall |