



kinship
COMMUNITY FOOD CENTER

**A proposal to the Housing Authority
of the City of Milwaukee**

for the purchase of 421 E. Locust Street, Milwaukee



Kinship Community Food Center is a community food center that engages volunteers and neighborhood residents to end hunger, isolation, and poverty.

Our innovative programs nourish food security and wellness, foster belonging and community engagement, and empower stability and economic prosperity in our city.

Executive Summary

For more than 40 years Kinship has worked alongside thousands of low-to-moderate income households in the Riverwest-Harambee neighborhoods to relieve the financial stress of food insecurity and dietary illness.

Kinship is now launching Milwaukee's first, but not its last, Community Food Center. A Community Food Center is a vibrant space where people come together to grow, shop, cook, share, and advocate on behalf of one another and their community. Food centers reduce food insecurity and social isolation and enable neighbors to strengthen their well-being and financial stability through the power of food.

Kinship's new building would serve as a centrally located connection site between the Riverwest-Harambee neighborhoods. The approximately 22,000 square foot Center will address Kinship's current accessibility, safety, and programming efficiency barriers. It will also enable Kinship to expand economic development for the community through a revenue generating production kitchen for culinary workforce training and employment.

Kinship is excited to welcome you into our vision to bring nourishment, belonging, and prosperity through the power of food.

Our new home will include:

- An accessible facility with environmentally-sustainable features
- Free public shopping market offering fresh produce, non-perishables, meats, dairy, and whole grains
- Commercial teaching kitchen and dining area for weekly meal prep, healthy cooking demonstrations, and workforce training
- Load-in access with dock for food deliveries and ample cold and dry storage
- Open green spaces with gardens
- Community spaces for crisis assistance, training, consultation, and gatherings
- Centralized offices for administration and program development
- Parking for food rescue vans and 25-30 cars
- Social Enterprise with revenue generating production kitchen



Kinship at a Glance

OUR HISTORY, APPROACH, AND PROGRAM IMPACTS

Our History

From the beginning, food has been a way to change our lives as a community.

2013

Community members gather to institute the Riverwest Food Pantry as a 501(c)(3) non-profit with Vincent Noth as Executive Director. Becoming an independent nonprofit with a hired staff member allows the food pantry's mission to expand, using food as a means of building community and addressing the wider challenges of health, poverty, and social isolation.

2020

The Riverwest Food Pantry develops a five-year strategic plan outlining desires to expand program capacity, redesign its brand, and find a permanent building site to promote a more holistic and relational approach to addressing hunger in Milwaukee.

1979

The East Side Housing Action Committee (ESHAC) partners with the St. Casimir Parish to open a distribution site to meet the hunger needs of ESHAC residents.

2000

Teachers at Gaenslen and Fratney Schools identify hunger among school families and open a second site at Gaenslen for food distribution. Efforts are coordinated with St. Casimir Parish as Riverwest Food Pantry.

2014

The meal program, mission internship program, and community gardens program launch to evolve beyond the traditional pantry model into a new "community food center" model.



2022

Riverwest Food Pantry becomes known as **Kinship Community Food Center** to better reflect the foundational belief that all transformation starts with relationships.

Traditional Food Pantry Model

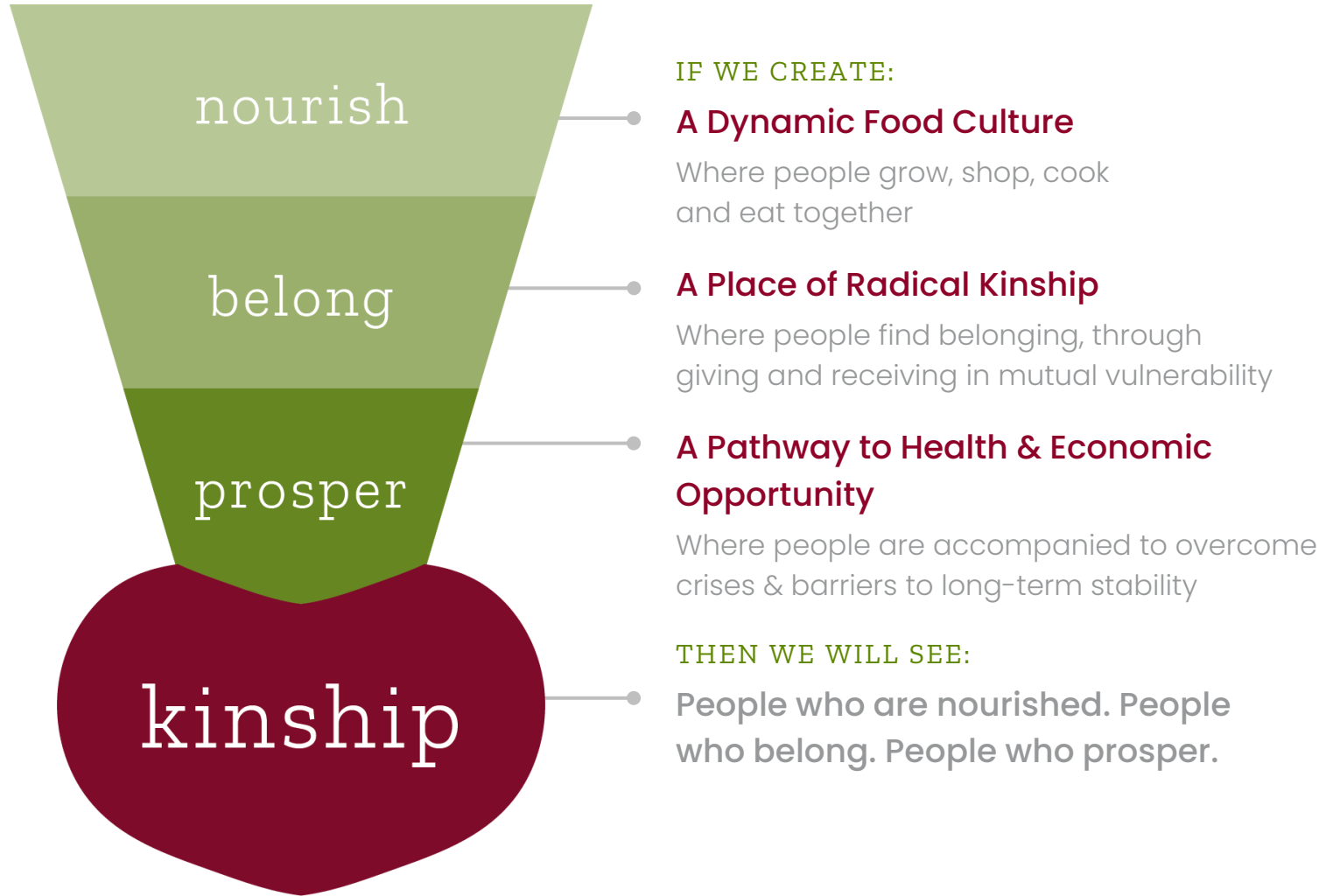
Measures outcomes in pounds of food distributed & number of people reached



Community Food Center Model

Measures outcomes in community health, stability, & prosperity

Our Theory of Change



Our Pillars

Our work is structured by three mission pillars.



NOURISHMENT

Nourishing food security and wellness



BELONGING

Fostering kinship and community engagement



PROSPERITY

Creating stability and economic opportunity

Our Programs

Our programs are designed to address food scarcity and help the whole person thrive.



Shop

FRESH FOOD MARKET

A fresh food market that integrates health education, cooking demonstrations, a food bar, and connections to community resources.



Grow

URBAN FARM

A 27,000 square foot urban hoop house vegetable farm that grows thousands of pounds of organic produce to feed and educate the community.



Feast

COLLABORATIVE MEALS

Collaborative meals that bring a diverse group around a common table to explore food traditions and whole food culinary skills.



Form

EDUCATION AND ENGAGEMENT

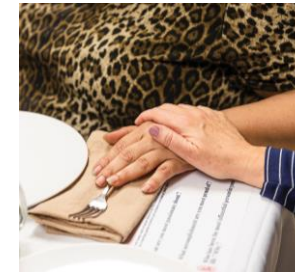
Service-learning and workshops that empower volunteers and neighborhood residents to become leaders of generosity and advocate for the betterment of society.



Mission Internship

A YEAR OF SERVICE

A residential “mission-year” of service and Catholic spiritual formation for young adults.



Stride

CRISIS ASSISTANCE & MENTORING

A mentoring program that accompanies people in crisis to overcome their barriers to health and economic stability.



Workforce

EMPLOYMENT READINESS & TRAINING

Paid work experience that integrates social connection and human development to create a healing path toward steady employment and economic mobility.

Our shoppers include children (roughly 70% from single parent households), under-employed adults, persons living on fixed incomes, unemployed individuals with barriers to steady employment, and individuals in crisis. The families we serve have an average income below \$1,300 per month.

Our Impacts: Annual Snapshot, 2023

15,261
Community Members Served

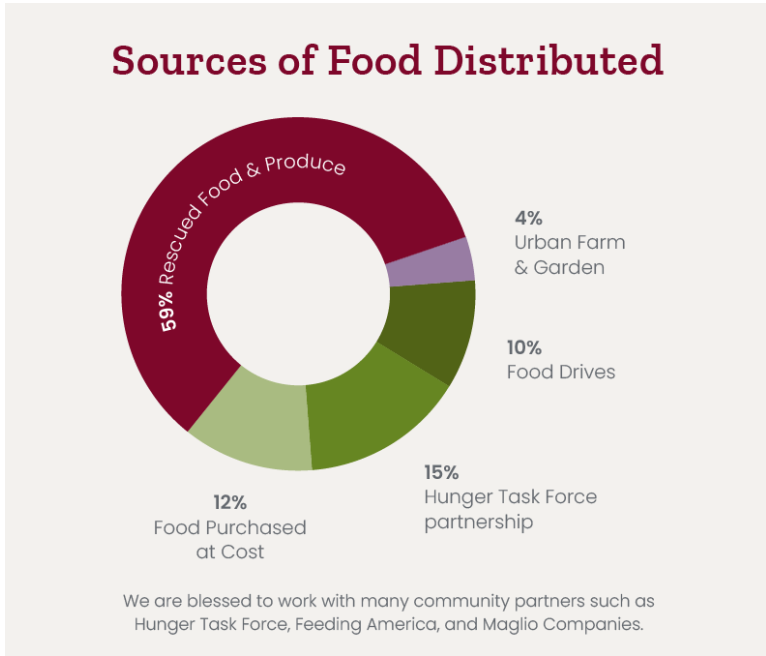


86k
Pounds of Produce Distributed

459
Referrals Made for Families in Crisis



15k
Pounds of Produce Grown in Our Community-Run Garden & Farm



89%
of community members say they are now cooking at home as a result of shopping at Kinship.



346k
Pounds of Food Distributed



30,643
Pounds of Eggs, Dairy, and Oil Distributed

96%
of community members say they feel accepted in our community at Kinship.

27k
Volunteer Hours

Our Community Engagement



Visit from Senator Lena Taylor
July 2023



Visit from Governor Tony Evers
January 2024



Northwestern University Kellogg Cares Day
October 2023

Kinship in the Press

An oasis in Riverwest: How a food pantry learned to find 'kinship' in a Milwaukee neighborhood

**milwaukee
journal sentinel**

Kinship Community Food Center Fosters a 'We' Culture

Shepherd
EST. 1992 MEDIA PRESS

Kinship Community Food Center Urban Garden helps reduce food deserts in Milwaukee

TMJ4 WTMJ-TV
MILWAUKEE



Proposed Services and Construction Details

OUR VISION, SPACE PLANS, RENDERINGS, AND SITE PLAN

OUR VISION

A Flagship Food Center for Milwaukee

Kinship is putting a flag in the ground for Milwaukee to operate the first, but not the last, community food center to bring nourishment, belonging, and prosperity through the power of food. Kinship's new facility will be designed in a way that allows us to provide programs in an accessible, operationally safe and efficient manner, with room for growth to meet the community's evolving needs.



Aerial Site Plan

Centralized Efficient Operations

An accessible site with environmentally-sustainable features that includes gathering spaces, ample cold and dry storage, loading docks for food deliveries, program staff offices, and onsite parking for our vans and center patrons.

Resource & Workshop Areas

Human service consultations spaces for resource referrals, coaching, workshops & trainings.



Rendering – Exterior

Free Public Market & Dining Area

Interactive market & dining with fresh produce, frozen meat, dairy, bakery, & non-perishables.

Community Teaching Kitchen

Collaborative food preparation & demonstration kitchen for wellness education with breakfast, dinner, and juice bars.



Green Space & Gardens

Open space for gardening, gathering, education, and recreation.



Rendering – Exterior

Production Kitchen

Revenue generating production kitchen for culinary workforce training & employment.



HGA

Rendering – Interior

Space Plan Draft

Level 1

Commercial Kitchen, Market, Community Space, and Production Kitchen designed to open and adapt into one large event space.



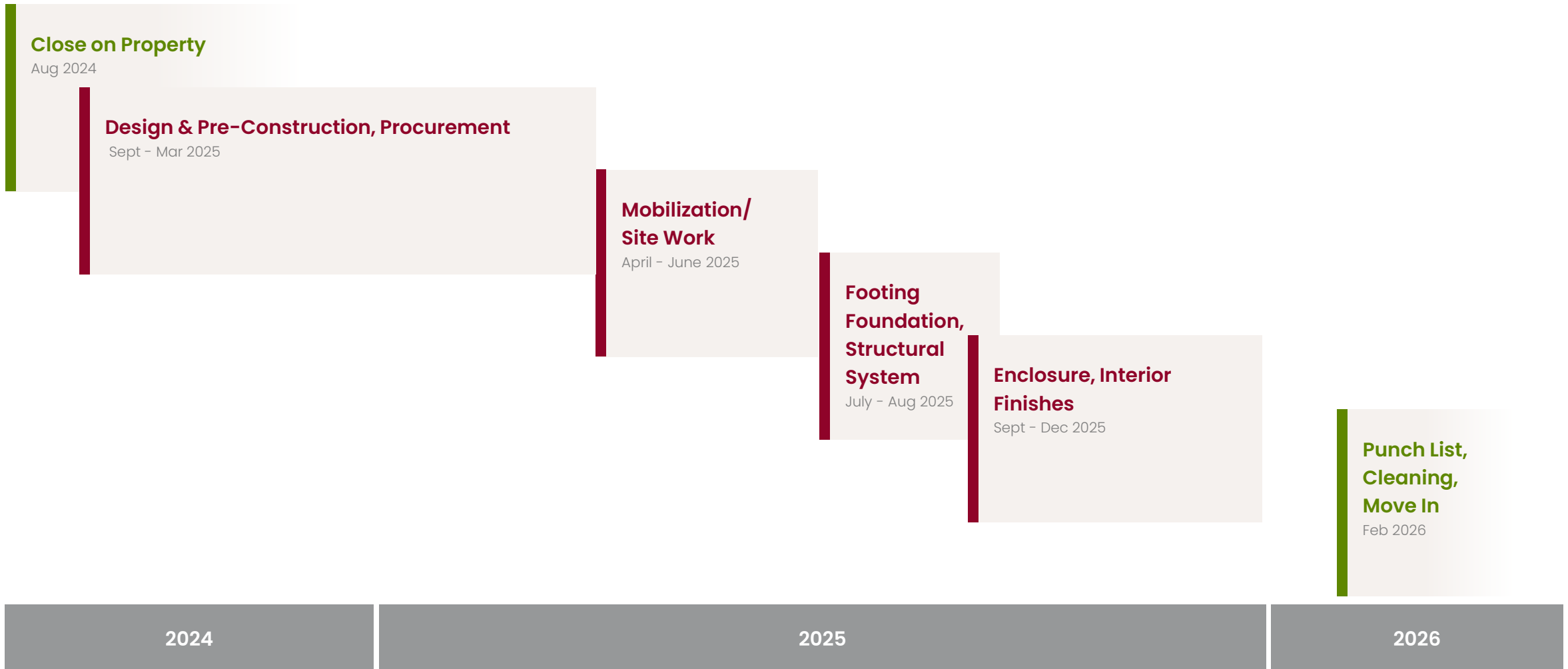
Space Plan Draft

Level 2

Ample office and multipurpose workshop spaces on the second level above the loading and support areas.



Construction Timeline





Supporting HACM Residents

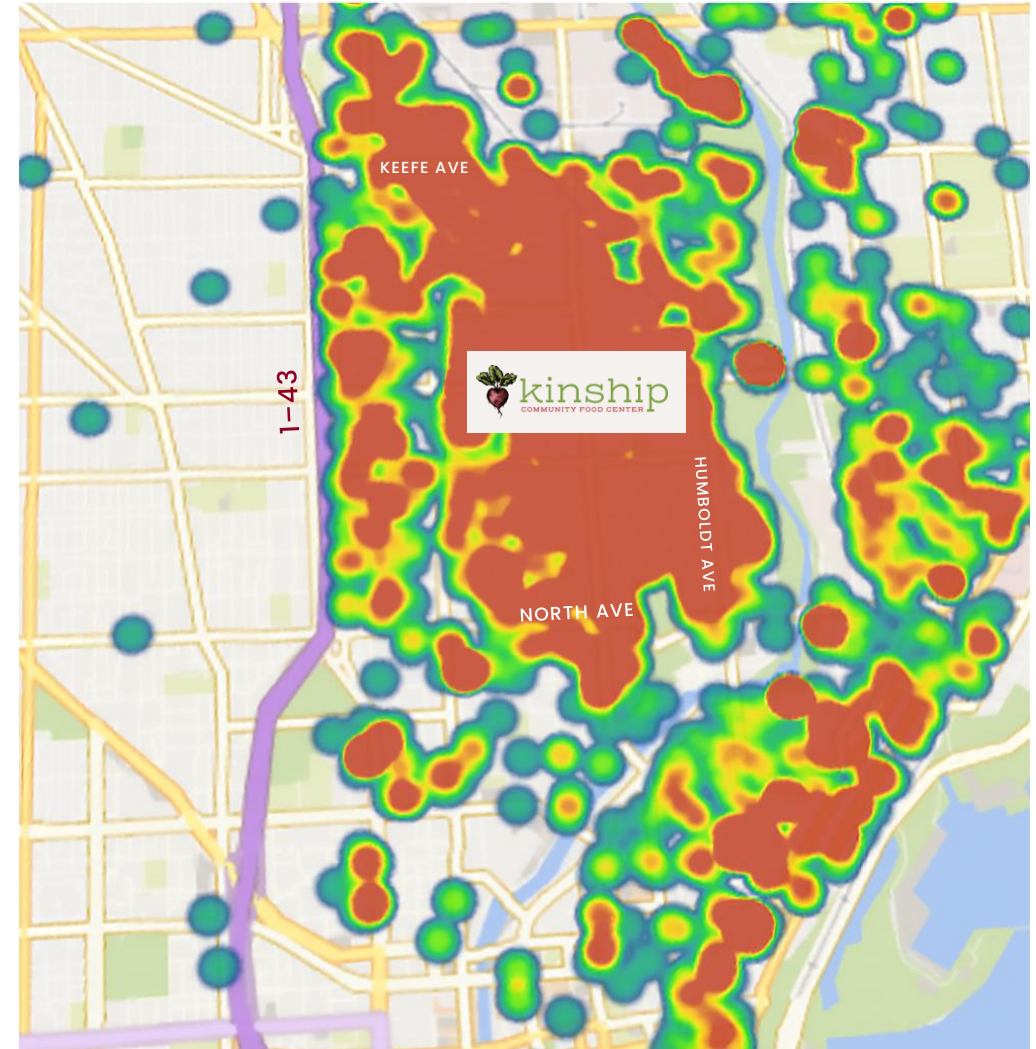
KINSHIP'S WORK WITH RESIDENTS LIVING IN HOUSING AUTHORITY OF THE CITY OF MILWAUKEE PROPERTIES

Our Commitment to this Community

This “heat map” shows current shopper frequency at the Kinship Community Food Center. Kinship’s development of the site at Holton and Locust would be an ideal location to meet the grocery and food needs for Housing Authority residents and the surrounding community who already shop with us.

Feeding more than 15,000 people each year, primarily from the 53212 zip code, our experience in improving food security, reducing dietary illness and social isolation, reducing eviction and crises, improving long-term health, neighborhood engagement, and economic stability, mobilizing community volunteers, and investing in young community leaders demonstrates our leadership and commitment to this neighborhood.

Kinship serves the 53202, 53203, 53211, 53212, and 53217 zip codes. In recent years, Kinship has served more than 4,000 households primarily in the 53212 zip code, which is bounded to the south by North Avenue and the north by Keefe Avenue, to the east by Humboldt Avenue, and the west by the I-43 freeway.



A History of Supporting Residents of HACM Properties

Kinship is grateful for its longstanding support and partnership with residents residing at the Housing Authority of the City of Milwaukee. Kinship Food Center is a frequent location where HACM residents gather to eat, socialize, shop, volunteer, and receive crisis assistance and mentoring.

In recent years, **Kinship has served 327 HACM households***—52 of these households from Holton Terrace alone.

*The 327 households are public housing residents primarily from Holton Terrace, Locust Court, Riverview, and Arlington Place. These numbers do not include the HACM Section 8 households Kinship serves. Kinship also serves residents from Convent Hill, Lapham Park, and Townhomes at Carver Park.



"Before I came here, I had nothing...but when I came to Kinship everybody here was all hands-on deck for me."

-NATHANIEL HARRIS
Locust Court Apartments

After he lost his car and job, Nathaniel didn't know where to turn. At Kinship, he was able to get assistance with his food stamp application, find transportation, stabilize his housing, and start looking for employment. Renewed, he considers himself a big brother to everyone in the community.



"They cared about me more than I cared about myself, and they loved me more than I loved myself."

-DAVID HOPKINS
College Court Apartments

David continues to work on his sobriety and has a steady job as a custodian. When asked about his journey of ups and downs, he credits Kinship for walking alongside him through it all.

A History of Community Leadership & Engagement

Building the new Kinship Community Food Center at this location would deepen neighborhood community engagement, especially among Holton Terrace Residents, and serve as an important bridge between the Riverwest and Harambee neighborhoods.



HACM residents volunteer as mentors on our crisis assistance teams. They work alongside Kinship human service staff to provide essential referral and crisis assistance services



Dozens of HACM residents volunteer at the Kinship Food Center operations each week serving meals, coordinating load-ins, sorting food, and assisting shoppers.



"I felt an unconditional acceptance. I was needed. I felt like I was at home again."

-LONA OWENS
*Crisis Assistance Lead
Arlington Courts Apartments*

Lona was emerging from homelessness and loss of family due to a mental health crisis when she came to the Kinship Community Food Center. She is now one of our lead community mentors and is pursuing a BSW in social work from UW-Milwaukee.



"You gotta come here to find the love that's here. Ain't nothing here but love. You can feel it!"

-BRUCE DAVIS
*Meat Department Lead
Locust Court Apartments*

Bruce is a retired community member living on a fixed income. Though he originally came to meet his food needs, he found a community and has helped run our meat department for many years.



"I've gotten so much help. That's why I want to be part of this, because this is a way I can give back."

-TIO (ALFREDO GONZALEZ)
*Produce Lead
Holton Terrace*

Tio has been helping at the Food Center for many years. He goes by Tio because it means uncle in Spanish, and to him, everyone here is like family. As a shopper and a volunteer, he knows the ins and outs of this community and sees the joy in every part of it.



Deepened Support for Residents of HACM Properties

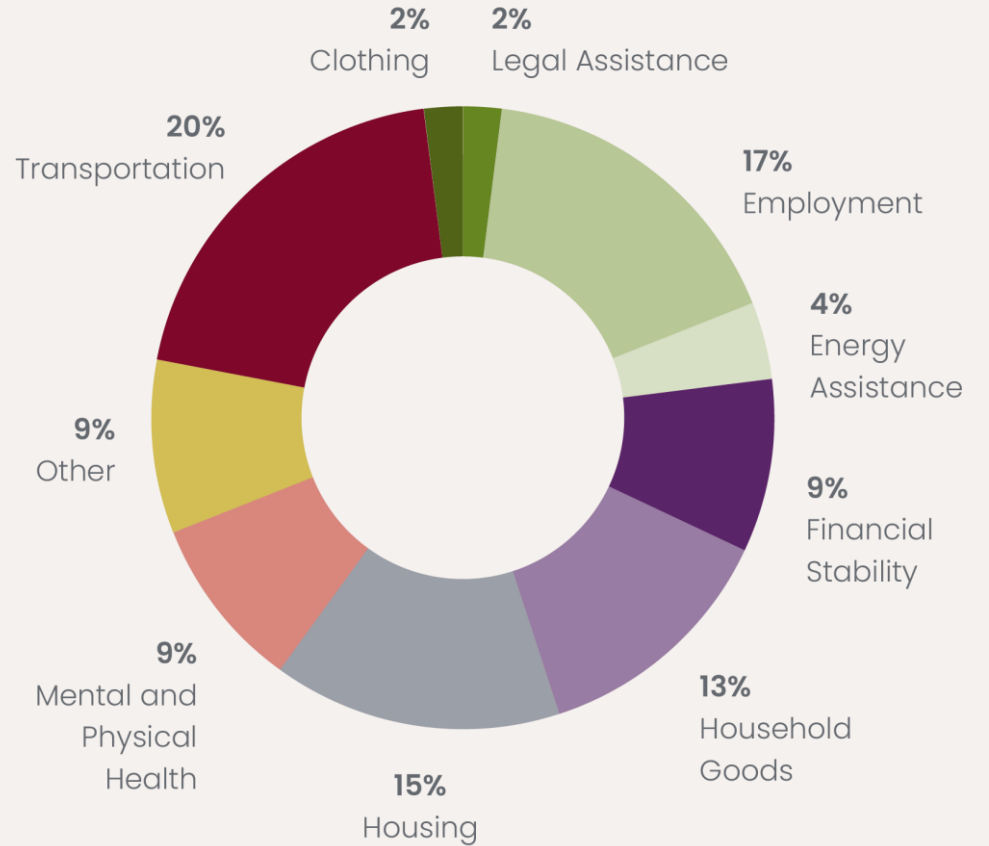
In recent years Kinship has provided more than 80 resource referrals to residents of HACM properties to assist with areas ranging from household goods and employment to transportation and physical health.

The following graph displays the 459 referrals in collaboration with 88 partner agencies for our community in 2023.

459 Referrals to **88** Partner Agencies

Kinship recognizes that a healthy community is a well-connected, collaborative community. Developing community partnerships over the decades has been key to the success of our community food center model and we will continue to seek and strengthen these opportunities to help change the way we address hunger in Milwaukee.

2023 Community Partner and Resource Referrals





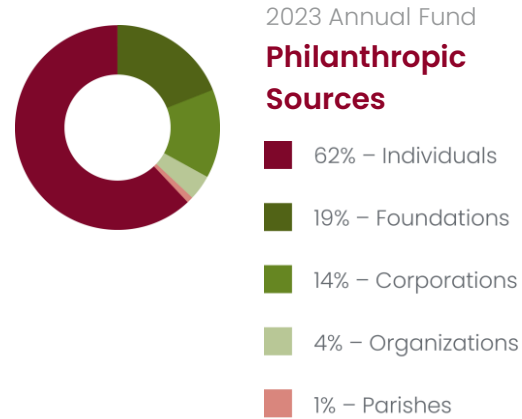
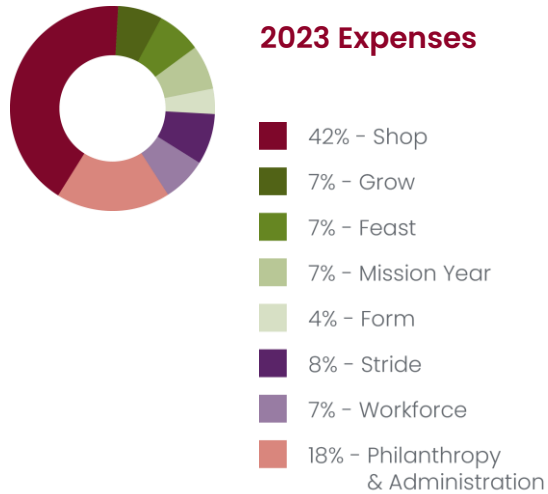
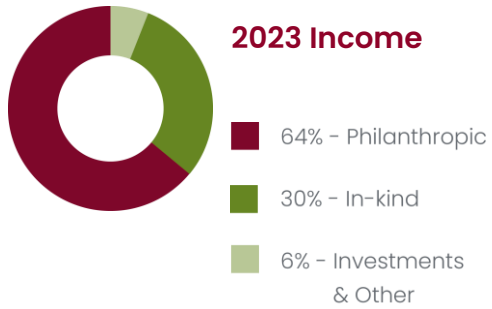
Building a Place for Kinship

OUR FINANCIAL CAPACITY AND CONTACT INFORMATION

Robust Fiscal Health

Kinship's diversity of philanthropic income demonstrates robust fiscal health.

The enclosed Audited Financial Statements, along with our long track record of annual budget growth and profitability, evidence our financial capacity to complete a large capital development project and service a mortgage if needed.



"We embrace and promote Kinship's philosophy of both giving and receiving with sincerity and generosity."

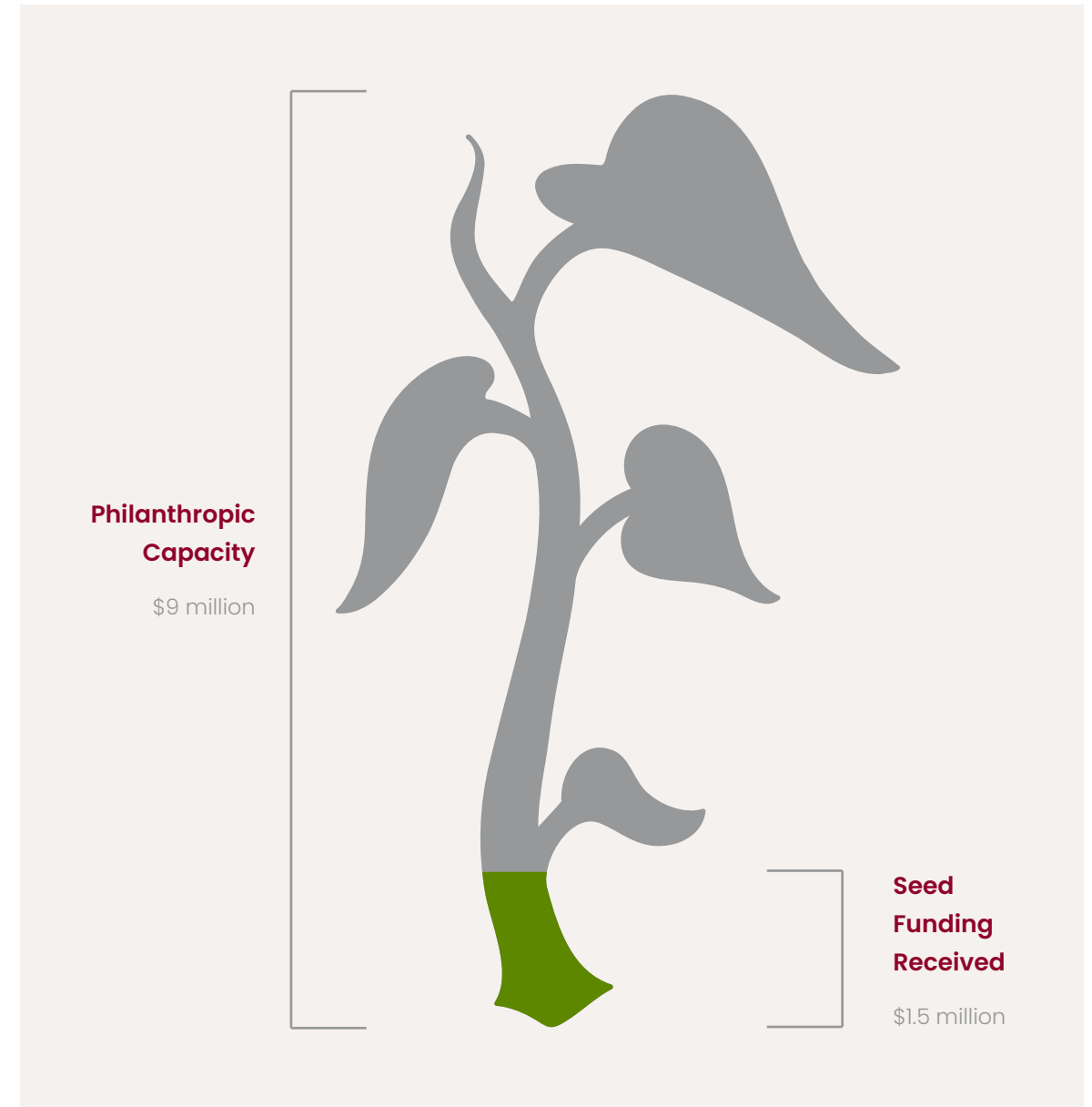
Jack and Debra started as shoppers and now have been volunteers for several years. They attribute their experience at Kinship with changing how they view themselves and how they connect with neighbors in the wider community. Their belief in generosity and in our mission is why Jack and Debra are now also generous donors and give from the foundation that was established in memory of their daughter.

Funding our Vision

Kinship conducted a campaign feasibility study indicating a capacity to philanthropically raise a minimum of \$9 million for this project.

Kinship has already received \$1.5 million in seed funding.

Once a location for our new home is identified, a comprehensive campaign will fully commence to support our additional program growth and building needs to serve our community more deeply.






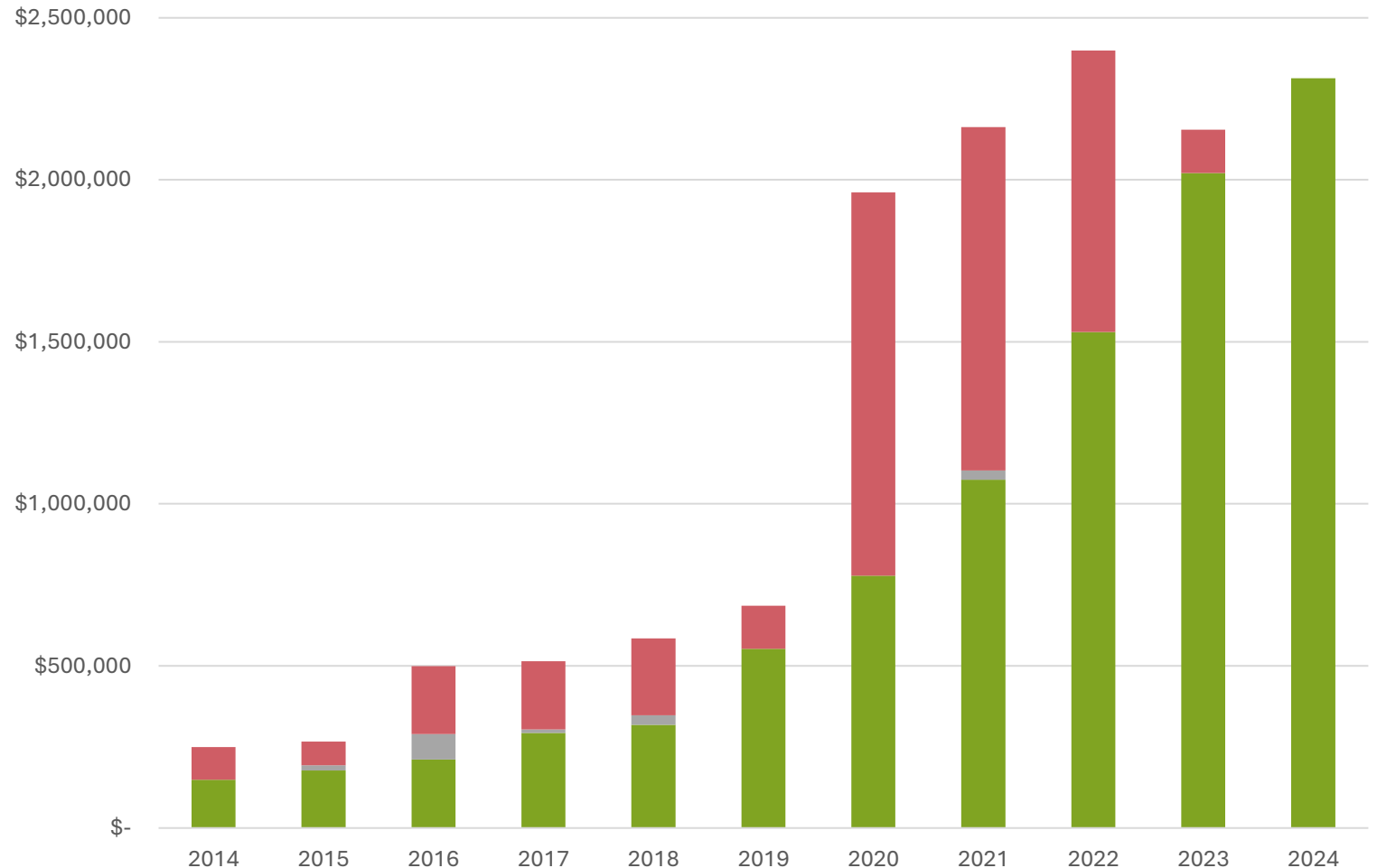
A Strong Financial Position

Kinship's history of securing philanthropic support in excess of our expenses enables us to invest in our community's future.

10-Year Budget History

2014-2023 Actuals | 2024 Budgeted

-  Budget Size (Expense)
-  Actual Expenses in Excess of Budget
-  Actual Revenues in Excess of Budget and Expenses



Building a Place for Kinship

A new home will allow us to implement our vision to change the way hunger is addressed in Milwaukee. We are looking forward to discussing this opportunity with you. Please contact me with questions or if additional information is helpful.



Vincent Noth, Executive Director

vincent@kinshipmke.org

(414) 379-2475 mobile



2610 N. Martin Luther King Jr. Drive
Milwaukee, WI 53212

www.kinshipmke.org
414-301-1478