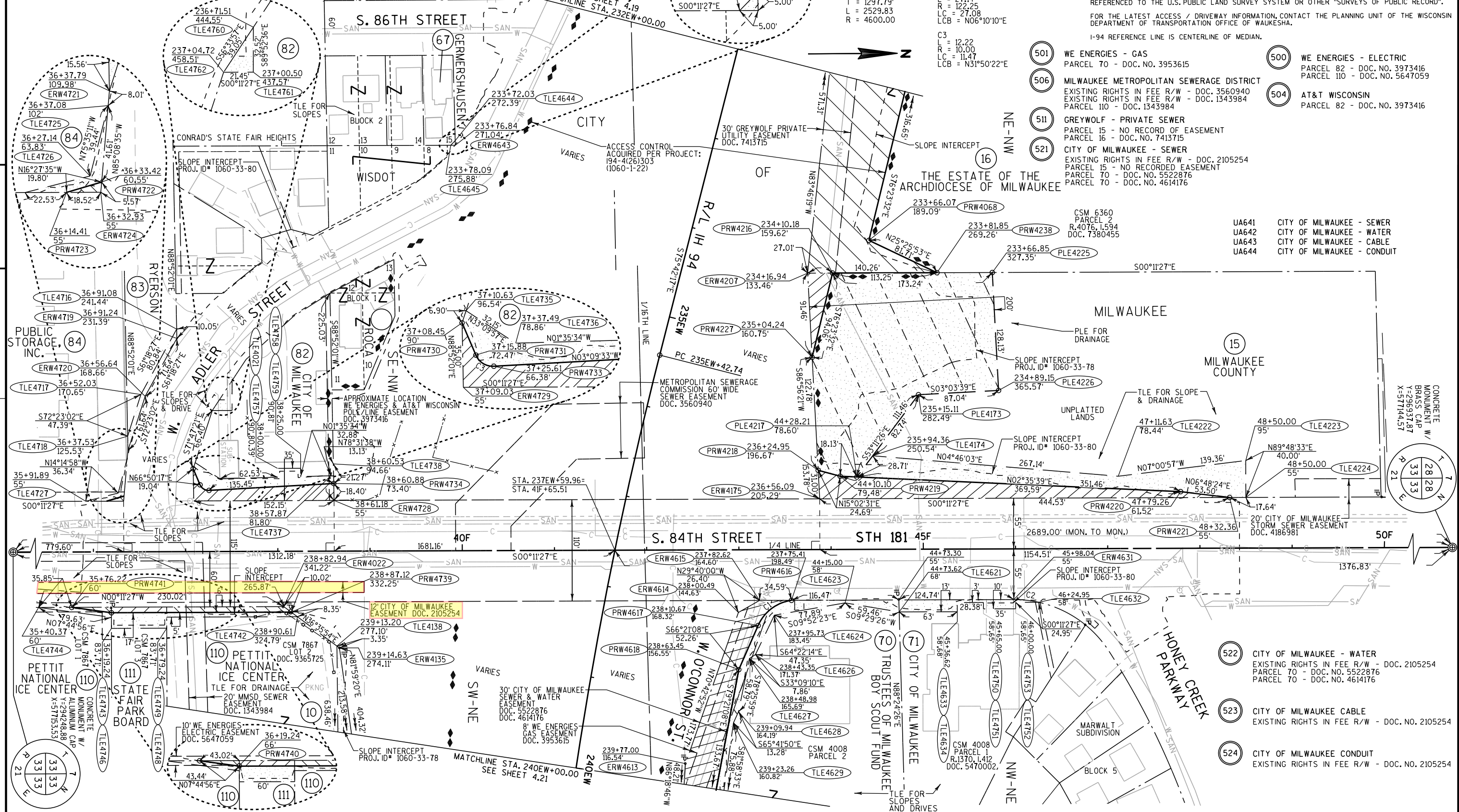


HWY	BASIS OF EXISTING R/W	YEAR	WIDTH
IH 94	194-4(26)303 (1060-1-22)	1970	VARIES
S. 84TH STREET	194-4(26)303 (1060-1-22)	1970	VARIES
S. 86TH STREET	CONRAD'S STATE FAIR HEIGHTS	1913	60'
W. ADLER STREET	194-4(26)303 (1060-1-22)	1970	VARIES
S. 84TH STREET	CITY RESOLUTION #47-21-b (DOC. 3313218)	1954	55' EAST



RL IH-94
 PI STA. 248+40.53
 Y : 295289.25
 X : 578195.08
 DELTA = 31°30'38"
 D = 1°14'44"
 T = 1297.79
 L = 2529.83
 R = 4600.00

C1
 L = 47.37
 R = 46.42
 LC = 45.35
 LCB = 53°06'47"E

COORDINATES AND BEARINGS SHOWN ON THIS PLAT ARE REFERENCED TO THE WISCONSIN COUNTY COORDINATE SYSTEM, MILWAUKEE COUNTY ZONE, NAD83 (2007) ADJUSTMENT. THE COORDINATES SHOWN ARE GRID COORDINATES AND ARE TO BE USED AS GRID OR GROUND VALUES ON THIS PLAT.

RIGHT-OF-WAY MONUMENTS ARE TYPE 2 (TYPICAL 3/4" REBAR) AND WILL BE PLACED PRIOR TO THE COMPLETION OF THE PROJECT BY WISCONSIN DOT SOUTHEAST REGION SURVEY.

RIGHT-OF-WAY BOUNDARIES ARE DEFINED WITH COURSES OF THE PERIMETER OF THE HIGHWAY LANDS REFERENCED TO THE U.S. PUBLIC LAND SURVEY SYSTEM OR OTHER "SURVEYS OF PUBLIC RECORD".

FOR THE LATEST ACCESS / DRIVEWAY INFORMATION, CONTACT THE PLANNING UNIT OF THE WISCONSIN DEPARTMENT OF TRANSPORTATION OFFICE OF WAUKESHA.

I-94 REFERENCE LINE IS CENTERLINE OF MEDIAN.

- 501 WE ENERGIES - GAS
PARCEL 70 - DOC. NO. 3953615
- 506 MILWAUKEE METROPOLITAN SEWERAGE DISTRICT
EXISTING RIGHTS IN FEE R/W - DOC. 3560940
EXISTING RIGHTS IN FEE R/W - DOC. 1343984
PARCEL 110 - DOC. 1343984
- 511 GREYWOLF - PRIVATE SEWER
PARCEL 15 - NO RECORD OF EASEMENT
PARCEL 16 - DOC. NO. 7413715
- 521 CITY OF MILWAUKEE - SEWER
EXISTING RIGHTS IN FEE R/W - DOC. 2105254
PARCEL 15 - NO RECORDED EASEMENT
PARCEL 70 - DOC. NO. 5522876
PARCEL 70 - DOC. NO. 4614176
- 500 WE ENERGIES - ELECTRIC
PARCEL 82 - DOC. NO. 3973416
PARCEL 110 - DOC. NO. 5647059
- 504 AT&T WISCONSIN
PARCEL 82 - DOC. NO. 3973416

- UA641 CITY OF MILWAUKEE - SEWER
- UA642 CITY OF MILWAUKEE - WATER
- UA643 CITY OF MILWAUKEE - CABLE
- UA644 CITY OF MILWAUKEE - CONDUIT

REVISION DATE DEC. 17, 2012 APR. 17, 2013 AUG. 29, 2013	JAN. 17, 2014	DATE SEP. 28, 2012	SCALE, FEET 0 50 100	HWY: IH 94	STATE R/W PROJECT NUMBER 1060-33-24	PLAT SHEET 4.20
				COUNTY: MILWAUKEE	CONSTRUCTION PROJECT NUMBER 1060-33-81, 1060-33-89 1060-33-75	PS&E SHEET E