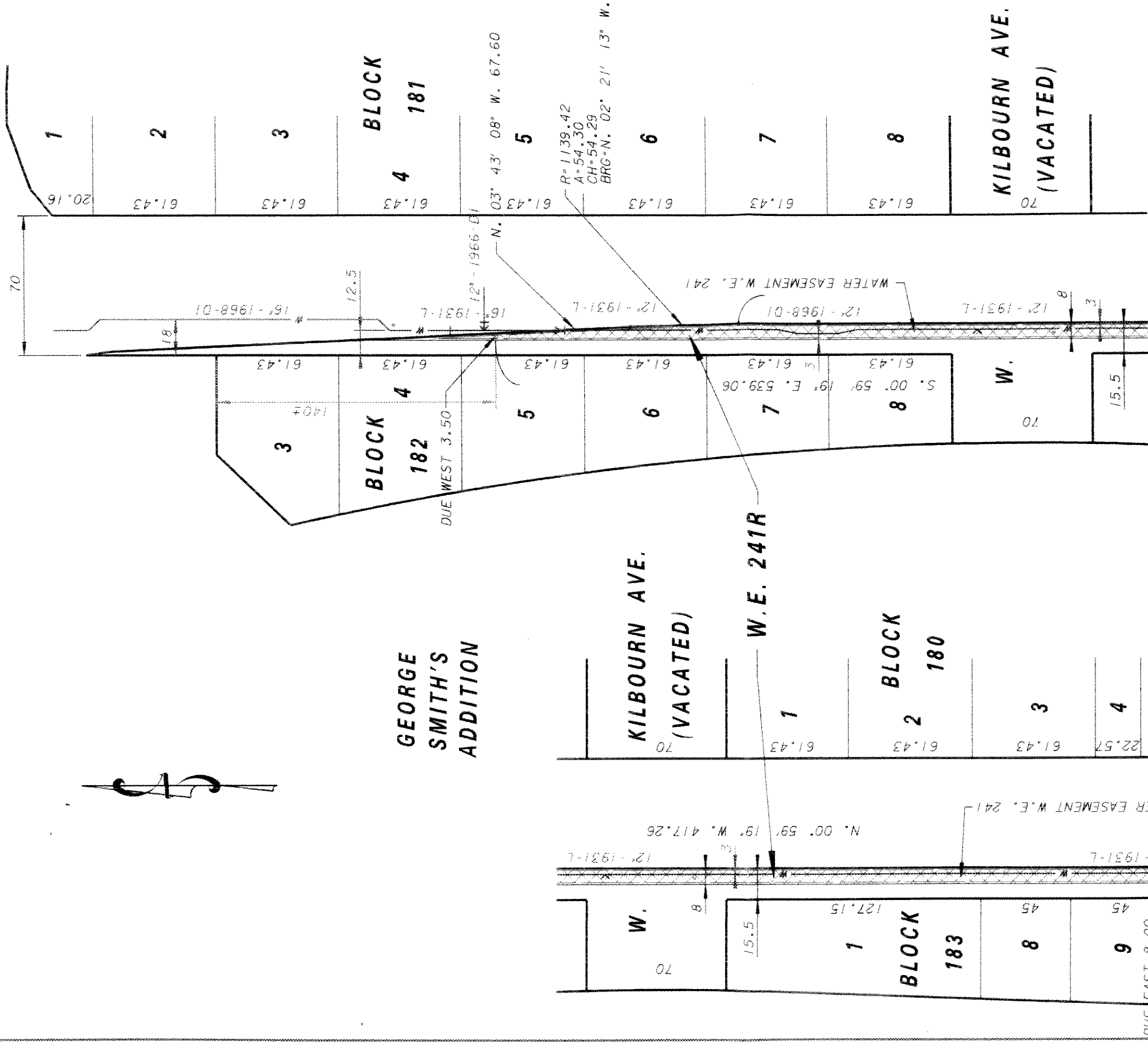


NW. 1/4 OF SEC. 29, T. 7 N., R. 22 E.

W. STATE ST.



W. E. 241R, PARTIAL RELEASE

OF WATER EASEMENT W.E. 241

Milwaukee Water Works
 Department of Public Works
 Milwaukee, Wisconsin

WATER EASEMENT
VACATED NORTH 10TH STREET
 FROM 145' N/O WEST WELLS STREET
 TO 140' S/O WEST STATE STREET

SCALE	1" = 50'	APPROVED	DATE
1/4 SEC. NO.	391	<i>Paul J. G. Gandy</i>	8-21-06
PLAN DATE	8-1-06		MAIORS DESIGN ENGINEER
DRAWN BY	P.W.P.	<i>Paul J. G. Gandy</i>	8-22-06
CHECKED BY		<i>W. E. 241R</i>	8/22/06
REVIEWED BY			SUPERVISOR
WORK ORDER	WT410061311		SPECIAL DEPUTY COMMISSIONER OF PUBLIC WORKS

SHEET NO. 1 OF 1 PLAN FILE NO. WE241R

GEORGE SMITH'S ADDITION

KILBOURN AVE. (VACATED)

W. E. 241R

BLOCK 180

N. 00° 59' 19" W. 26.00

R=173.50
 A=32.44
 CH=32.39
 BRG=N. 04° 22' 03" E.

ALFRED C. CLAS PARK

N. 09° 43' 24" E. 51.63

R=93.50
 A=11.67
 CH=11.66
 BRG=N. 13° 17' 59" E.

W. WELLS ST.