

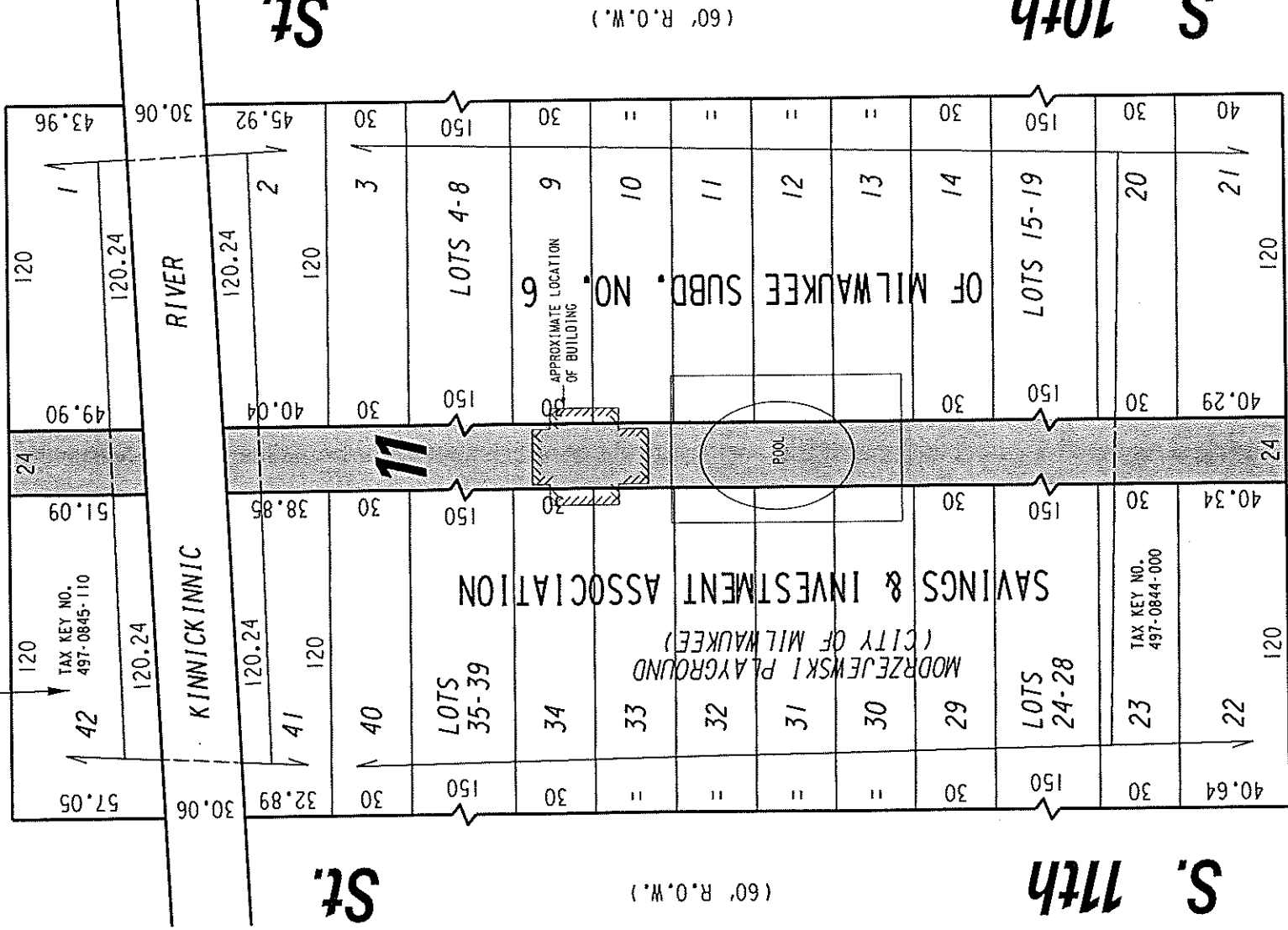
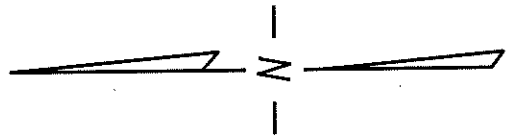
497

N.W. 1/4 SEC. 8, T.6N., R.22E.

KINNICKINNIC RIVER PARKWAY
(MILWAUKEE COUNTY)

(60' R.O.W.)

W. Harrison Ave.



(60' R.O.W.)

S. 10th

S. 11th

(60' R.O.W.)

W. Cleveland Ave.

(60' R.O.W.) 1/4 SEC. LINE

UNIMPROVED PUBLIC ALLEY
(NOT IN USE) PROPOSED
TO BE VACATED



EXHIBIT "A"
FILE NO. 111401
INFRASTRUCTURE SERVICES DIVISION
MILWAUKEE, WISCONSIN

ASSIGNED TO: G.C. GUERRA
DRAWN BY: G.C.
PROJECT/GRANT NO.: WK52337311
APPROVED BY:
CH'K'D. BY: W.E. FUCHS
DATE: MARCH 9, 2012
SCALE: 1" = 60'

12TH ALDERMANIC DISTRICT
ALD. JAMES N. WITKOWIAK

Marcia Cornell
CENTRAL DRAFTING & RECORDS MANAGER

[Signature]
ENGINEER