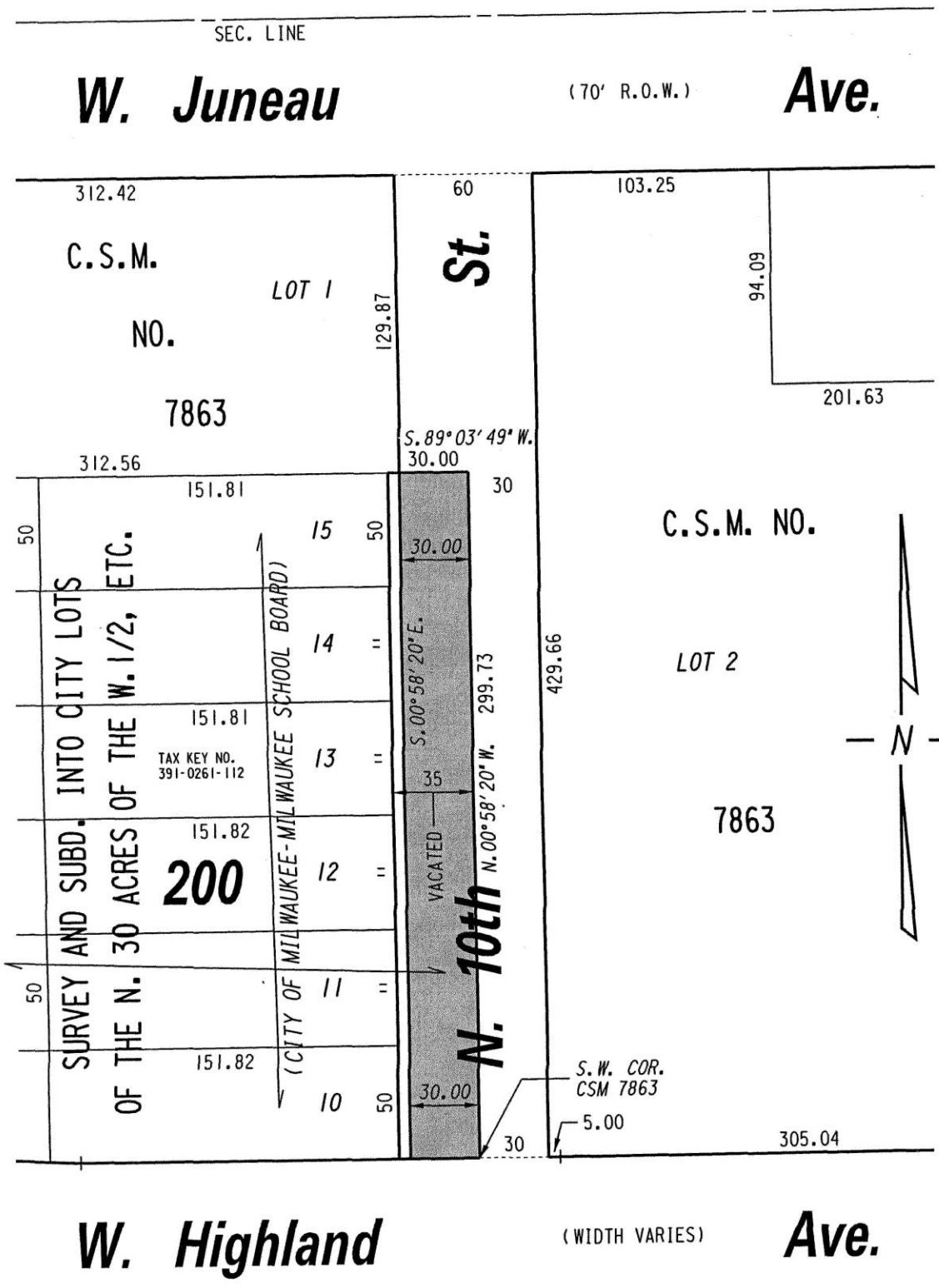


N.W. 1/4 SEC. 29, T.7N., R.22E.

391



 PROPERTY TO BE ACQUIRED FOR PUBLIC STREET PURPOSES

**FILE NO.**  
**INFRASTRUCTURE SERVICES DIVISION**

MILWAUKEE, WISCONSIN

ASSIGNED TO: W.E. FUCHS CH'K'D. BY: W.E. FUCHS  
 DRAWN BY: W.E.F. DATE: JAN. 12, 2007  
 PROJECT/GRANT NO.: WK52360065 SCALE: 1" = 60'  
 APPROVED BY:

*Marcia Lindholm*  
 CENTRAL DRAFTING & RECORDS MANAGER

*Jeffrey Plonka*  
 CITY ENGINEER