

R= 51.98'
A= 40.23'
C= 39.23'
I∠ = 44° 20' 44"
D∠ = 22° 10' 22"
C.B.= S.66° 27' 27" E.

TAN IN= S.88° 37' 49" E.
TAN OUT= S.44° 17' 05" E.

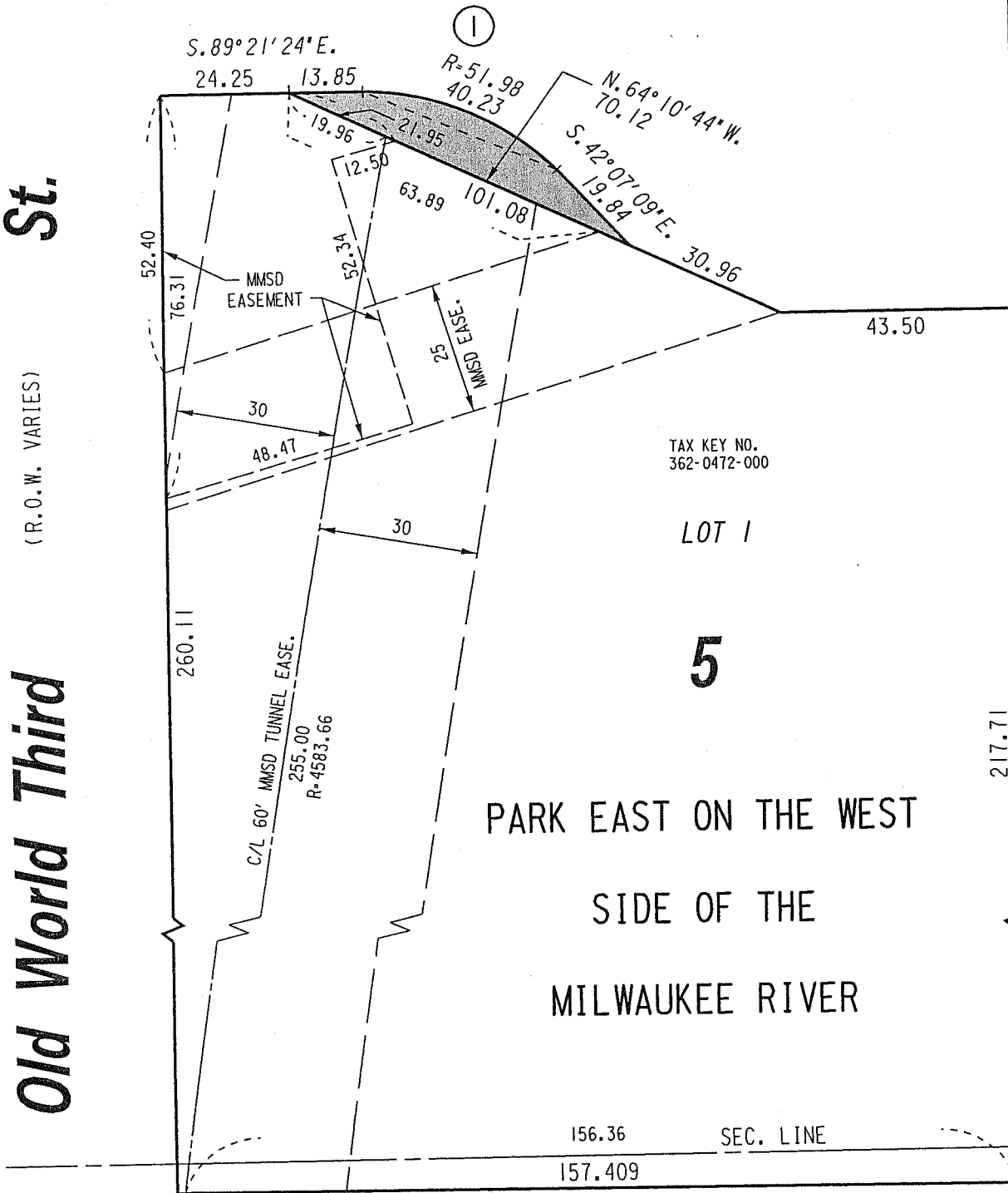
W. McKinley Ave.
(R.O.W. VARIES)

St.

RIVER

MILWAUKEE

ESTABLISHED DOCK LINE



TAX KEY NO.
362-0472-000

LOT 1

5

PARK EAST ON THE WEST
SIDE OF THE
MILWAUKEE RIVER

W. Juneau Ave.
(R.O.W. VARIES)

PORTION OF PUBLIC STREET PROPOSED TO BE VACATED

EXHIBIT "A"
FILE NO. 080817

INFRASTRUCTURE SERVICES DIVISION

MILWAUKEE, WISCONSIN

ASSIGNED TO: W.E. FUCHS

CH'K'D. BY: W.E. FUCHS

DRAWN BY: W.E.F.

DATE: OCT. 23, 2008

PROJECT/GRANT NO.: WK52337273

SCALE: 1" = 30'

APPROVED BY:

Marcia Lindholm

[Signature]

CENTRAL DRAFTING & RECORDS MANAGER

CITY ENGINEER