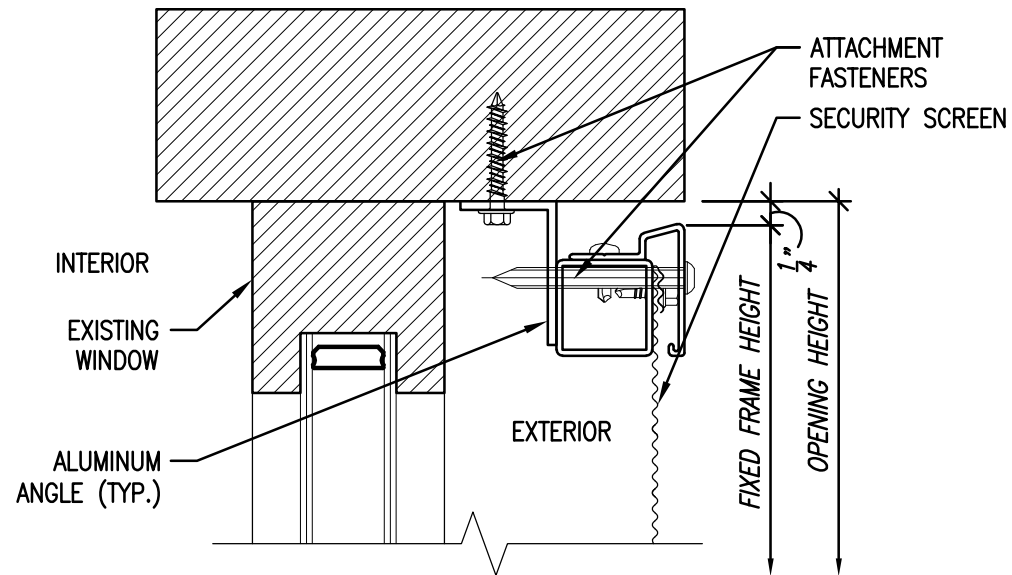


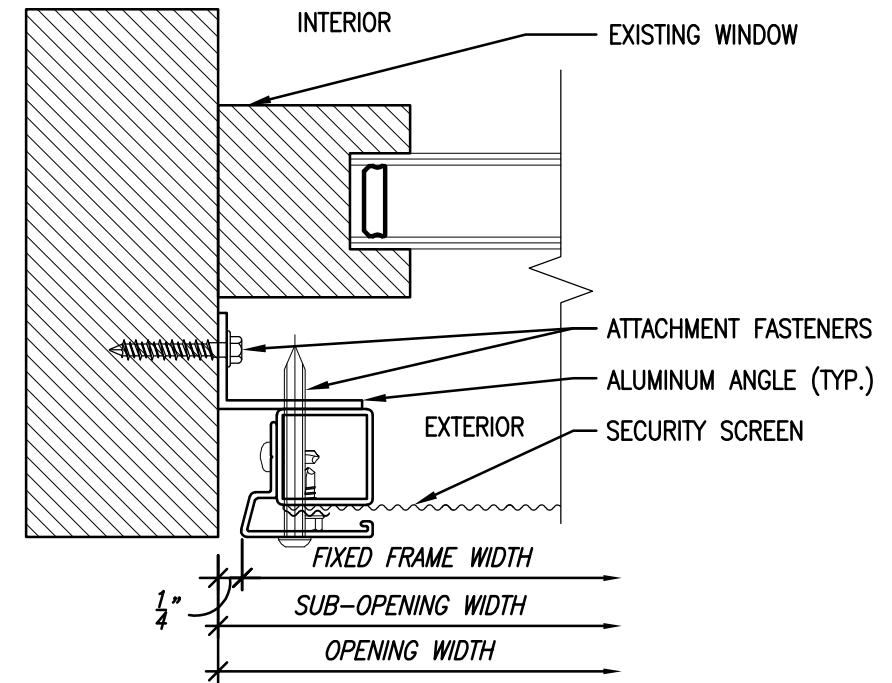
NOTE: REMOVE AND DISPOSE OF ANY EXISTING EXTERIOR INSECT SCREENS OR SECURITY SCREENS BEFORE INSTALLING SCHEDULED SECURITY SCREEN.



**SECURITY SCREEN - HEAD DETAIL (REVEAL MOUNT)**

SCALE: 6" = 1'-0"

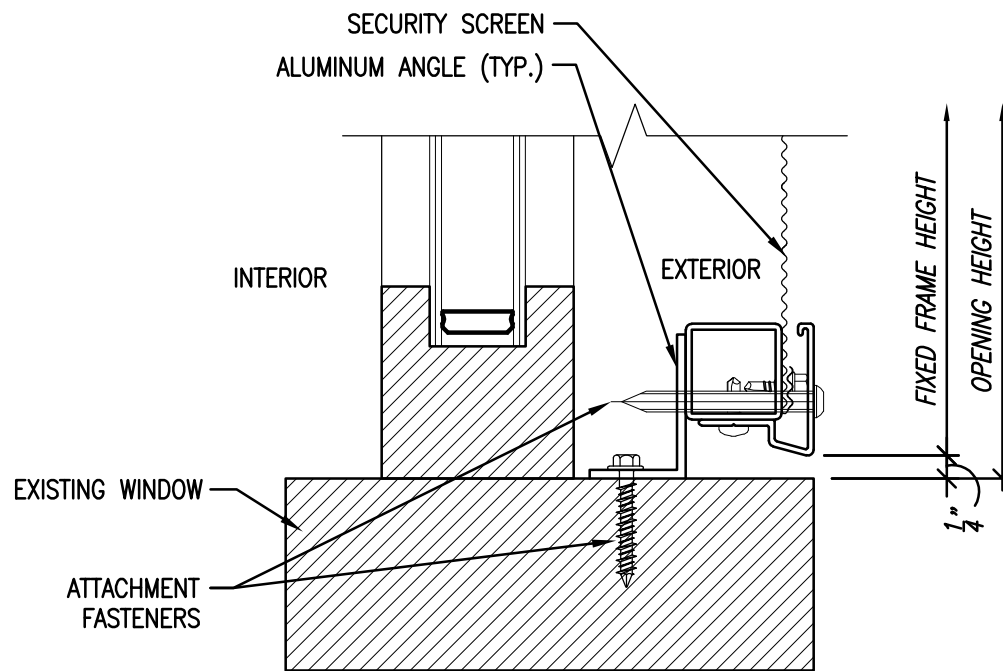
NOTE: REMOVE AND DISPOSE OF ANY EXISTING EXTERIOR INSECT SCREENS OR SECURITY SCREENS BEFORE INSTALLING SCHEDULED SECURITY SCREEN.



**SECURITY SCREEN - JAMB DETAIL (REVEAL MOUNT)**

SCALE: 6" = 1'-0"

NOTE: REMOVE AND DISPOSE OF ANY EXISTING EXTERIOR INSECT SCREENS OR SECURITY SCREENS BEFORE INSTALLING SCHEDULED SECURITY SCREEN.



**SECURITY SCREEN - SILL DETAIL (REVEAL MOUNT)**

SCALE: 6" = 1'-0"

Office of Operations  
Department of Facilities and  
Maintenance Services  
Sean Kane - Director  
1124 N. 11th Street, Milwaukee, WI 53233  
(414) 263-4600 mps.milwaukee.k12.wi.us



Quorum Architects, Inc.  
Quorum Project  
Number: 21026.00

Title: SECURITY SCREEN TYPICAL DETAILS	
Project Title: HPC SUBMISSION	
Project Location: MILWAUKEE, WI	
Approved By:	ARCHITECT/ENGINEER OF RECORD
MPS Project Phase:	

REVISIONS	BY

Drawn by: BI  
Checked by: JPB  
Date: 12-14-22  
Scale: As Noted  
Site Number:  
Project No:  
Sheet Number:

A4.0d