



Corner Close-up

Current Photos as of August 13, 2018



Northeast Corner

Current Photos as of August 13, 2018



Northeast Elevation

Current Photos as of August 13, 2018



Partial South and East Elevations

Current Photos as of August 13, 2018



South Elevation



North Elevation

Current Photos as of August 13, 2018



Rear/West Elevation

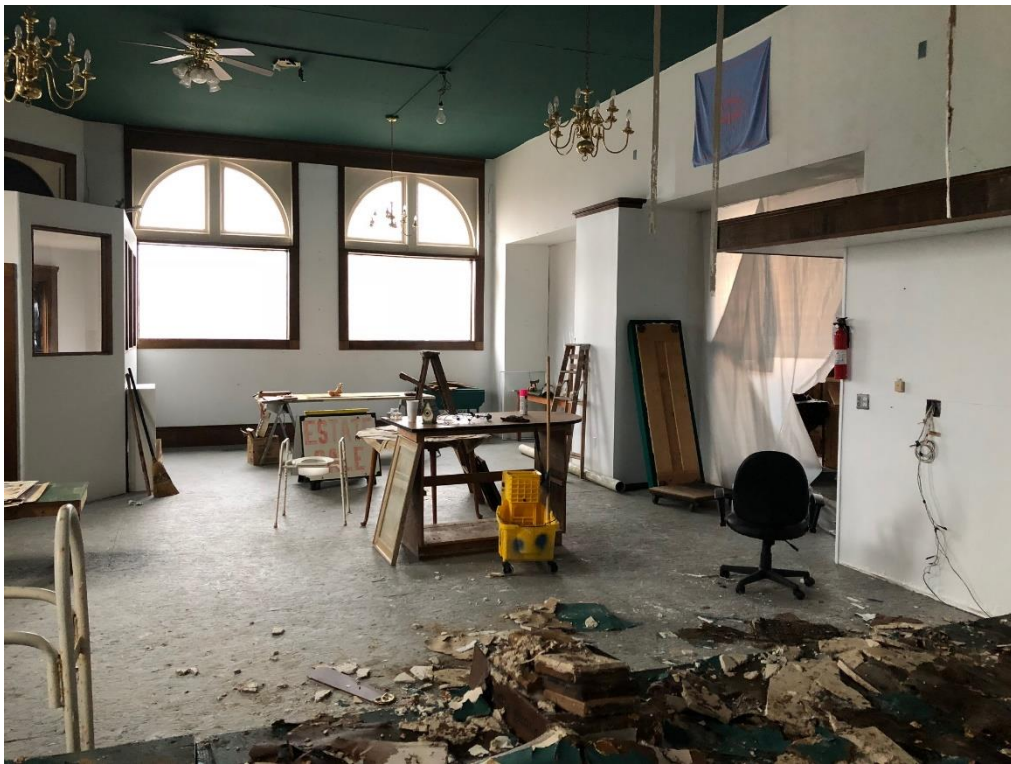


North Avenue Entrance to stairs and Upper floors

Current Photos as of August 13, 2018



Interior 1st floor Northern Space (original tavern space) looking West



Interior 1st Floor Northern Space (original tavern space) looking East

Current Photos as of August 13, 2018



Interior 1st floor Southern Space (original bowling alley space) looking East



Interior 1st floor Southern Space (original bowling alley space) looking West



Staircase looking up to 2nd Floor



Staircase looking down from landing

Current Photos as of August 13, 2018



Second Floor (original proprietor's residence) looking East



Third Floor (original meeting Hall) looking East



3rd Floor (Original Meeting Hall) Looking East



3rd Floor (Original Meeting Hall) looking West



Hole in roof of Turret

Current Photos as of August 13, 2018



View looking West down North Avenue to Reservoir Park Hill and Floral design



View past Turret from roof looking East towards Lake down North Avenue



Stained Glass Windows in Turret